



Brett J. Cyphers
Executive Director

Northwest Florida Water Management District

152 Water Management Drive, Havana, Florida 32333-4712
(U.S. Highway 90, 10 miles west of Tallahassee)

Phone: (850) 539-5999 • Fax: (850) 539-2693

February 24, 2016

Ms. Connie Bersock
DEP-OSLER-MS 2500
2600 Blair Stone Rd
Tallahassee, FL 32399-2400

Re: Semi-Annual Progress Report 23

Dear Ms. Bersock,

Please accept this submittal as the 23rd semi-annual progress report for the SHLMB. This report was written in accordance with Specific Condition 27.

Please provide a brief description of permit requirements met and extent of work completed since the previous report:

1. Fishing and hunting continued at the SHLMB throughout the fall and winter without incident in accordance with Specific Condition 8 and Attachment A of the permit.
2. In accordance with Specific Condition 8, security and law enforcement continued at the bank without any violations.
3. Since January of 2015 a total of 425 acres were burned at the SHLMB (Figure 1). The 61 acres adjacent to Dry Pond was scheduled for a burn in 2015, but was not burned due to site conditions.
4. Surveys for feral hog damage continued during the summer and fall of 2015 in accordance with Specific Condition 22. Hog damage was concentrated adjacent to Dry Pond. Trapping led to the removal of 7 hogs in 2015. No hogs were killed during the fall hunting season.
5. Site inspections were conducted in September and October of 2015 to determine if any further shrub reduction is needed at the SHLMB. Shrub cover has been reduced to less than 2% cover and no additional treatment is required.
6. A 37 acre sandhill restoration adjacent to the check station was treated for Bahia grass cover July 2015 (Figure 2).
7. A 46 acre sandhill restoration site was treated for centipede and Bahia grass cover in July of 2015 (Figure 3).
8. The annual monitoring was conducted in September-November in accordance with Specific Condition 28.

Restoration activities anticipated within the next 6 months:

1. Surveys for nuisance and exotic species will continue in the winter and spring of 2015 in accordance with specific condition 22.
3. Long leaf pine seedlings will be planted on 12' centers for 9.5 acres of sandhill enhancement site with poor longleaf pine seedling survival (Figure 4).
3. Water Level gauges will continue to be measured in 2015 in accordance with Specific Condition 12.
3. Approximately 414 acres of sandhill and hydric pine flatwoods will be burned during prior to June 15th 2015.

GEORGE ROBERTS
Chair
Panama City

JERRY PATE
Vice Chair
Pensacola

JOHN W. ALTER
Secretary-Treasurer
Malone

GUS ANDREWS
DeFuniak Springs

JON COSTELLO
Tallahassee

MARC DUNBAR
Tallahassee

TED EVERETT
Chipley

NICK PATRONIS
Panama City Beach

BO SPRING
Port St. Joe

Please provide a brief description of problems encountered and solutions undertaken:

Hog damage was observed within the hydric pine flatwoods eradication adjacent to Dry Pond. FWC was notified and steps were taken to eradicate hogs. This will continue until hogs have been removed.

Certification

I certify that this report represents true accurate and representative description of the activities and site conditions at the time of this report. This semi-annual report was written in accordance with Specific Condition 27, of the permit.

David C. Clayton
Environmental Scientist
Qualified Mitigation Supervisor

Enclosures:

Figure 1. 2015 prescribed burns at the SHLMB

Figure 2. Bahia grass eradication on 37 acres of Bahia grass pasture converted to sandhill

Figure 3. Centipede grass eradication on 46 acres of sand pine plantation converted to sandhill

Figure 4. Longleaf pine planting in 9.5 acre sandhill enhancement site.

Figure 4-8. Representative Site Photos

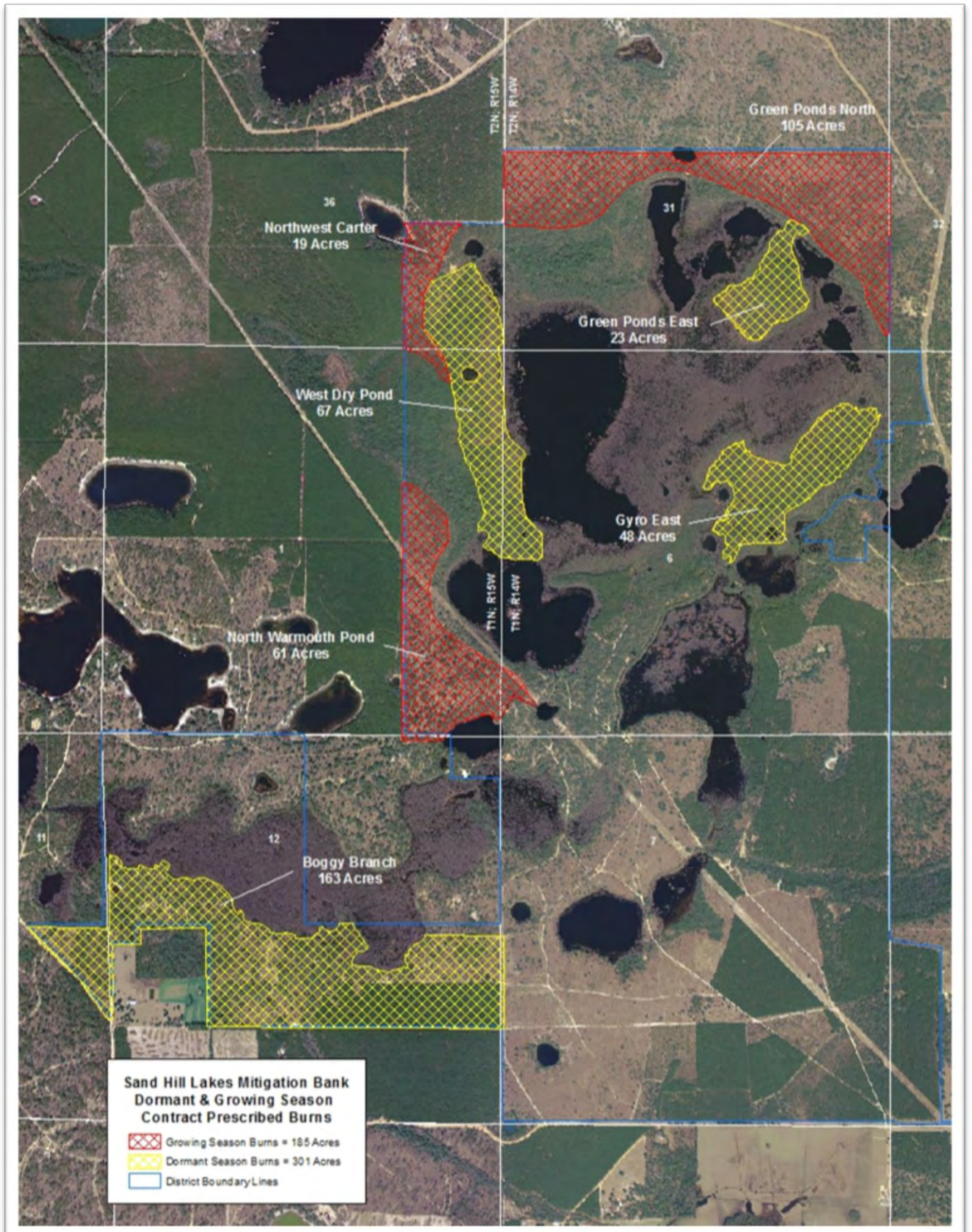


Figure 1. 2015 prescribed burns at the SHLMB

Hardwood and Exotic Grass Eradication Area (~37 Acres)



Northwest Florida Water Management District
Sand Hill Lakes Mitigation Bank (SHLMB)
Section 6, Township 1 North, Range 14 West
Washington Co., Florida

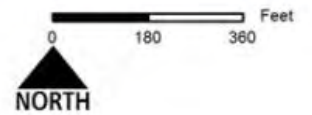


Figure 2. Bahia grass eradication on 37 acres of Bahia grass pasture converted to sandhill



Northwest Florida Water Management District
Sand Hill Lakes Mitigation Bank (SHLMB)
Section 6, Township 1 North, Range 14 West
Washington Co., Florida

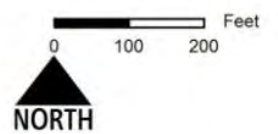


Figure 3. Centipede grass eradication on 46 acres of sand pine plantation converted to sandhill



Figure 4. 12/21/2015. Facing West: Sand pine plantation covered to sandhill



Figure 5. 12/21/15. Facing West: Black Pond



Figure 6. Facing East. 2/12/15 Dry Pond



Figure 7. 12/21/15 Facing West. Hydric Pine Flatwoods (12.5 Acres) Peninsula adjacent to Dry Pond



Figure 8. 12/21/15. Facing East. Garret Pond