

FDOT DISTRICT-3 REVIEW TEAM MEETING MINUTES

THURSDAY, AUGUST 18, 2016

[FDOT District-3 Maintenance Office – Midway, FL]

Attendees	
Randy Turner – USACE (Jacksonville)	David Rydene – NMFS (St. Petersburg)
Andy Kizlauskas – USACE (Jacksonville)	Ted Hoehn – FWC (Tallahassee)
Mike Ornella – USACE (Jacksonville)	Terry Gilbert – FWC (Tallahassee)
Colby Cleveland – FDOT (Chipley)	Paul Thorpe – NFWFMD (Midway)
Erica Brookman – FDOT (Chipley)	David Clayton – NFWFMD (Midway)
Mary Mittiga – USFWS (Panama City)	Robert Lide – NFWFMD (Midway)
Peter Maholland – USFWS (Panama City)	Janet Strutzel – NFWFMD (Tallahassee)
Adam Kaeser – UWFWS (Panama City)	--

The Review Team (RT) meeting was held Thursday, August 18, (10:00 AM – 12:00 PM EDT) at the FDOT District-3 Midway Operations Office (17 Commerce Blvd. at the US 90 / I-10 interchange west of Tallahassee).

NFWFMD Mitigation Program Status

Private mitigation bank service areas currently cover approximately 1/3 of northwest Florida, with several additional private banks proposed or under development. The NFWFMD provides mitigation options to FDOT only when use of a private mitigation bank is not feasible.

The NFWFMD In-Lieu Fee (ILF) program, which covers approximately 4/5 of northwest Florida, is functioning smoothly. Ample ILF credits are available in the Perdido (41.09 federal / 40.92 state credits), Apalachicola (35.21 federal / 34.47 state credits), and Ochlockonee (27.90 federal / 27.90 state credits) watersheds. Fewer ILF credits are available in the Yellow River watershed (9.27 federal / 1.29 state credits). There are no ILF options in the Blackwater or Escambia watersheds. Where ILF service areas overlap with private mitigation bank service areas (primarily in the Choctawhatchee and St. Andrew Bay watersheds), the private bank is to be used whenever feasible.

The importance of maintaining effective communications among Review Team members was emphasized, especially in regard to transportation project timeframes, permit submittals, and mitigation planning. Ideally, each Review Team member would have the opportunity to

comment on proposed mitigation prior to permits being issued. The Review Team will endeavor to meet at least twice a year.

Cooper Basin

Adam Kaeser (USFWS) presented information on Gulf Sturgeon recovery efforts, with a focus on sturgeon use of the Blackwater River and Cooper Basin. Cooper Basin and upstream portions of the Blackwater River will be investigated for potential use as a mitigation area.

SR 87 (from CR 178 to SR 4; FPID 416748-6; 2.71-acre Impact)

SR 87 (from Four-Lane section to Cold Water Creek; FPID 416748-2; 10.89-acre Impact)

SR 4 Blackwater River Bridge (FPID 432828-1; 2.05-acre Impact)

Combining mitigation for these three impacts in the Blackwater River watershed will be explored (the portions of SR 87 FPID 416748-2 with wetland impacts occurring within the Pensacola Bay Mitigation Bank service area are expected to be mitigated by FDOT purchase of private credits). The letting date for the SR 4 Blackwater River Bridge is 12/5/2018; letting dates have not been set for the SR 87 projects.

Two potential mitigation areas in Santa Rosa County were discussed: Cooper Basin (Blackwater River watershed) and an unnamed tributary to Julian Mill Creek (Yellow River watershed).

Any mitigation project at Cooper Basin and upstream portions of the Blackwater River would focus on long-term protection and conservation management of floodplain forest and other buffers to resting areas used by Gulf Sturgeon. Sturgeon habitat is especially vulnerable to sedimentation and degradation of water quality.

Efforts at the Julian Mill Creek Tributary area would address severe erosion and sediment smothering of a steephead ravine system.

The Review Team consensus was that a project at either Cooper Basin or Julian Mill Creek Tributary could provide important contributions to water resources protection. Most likely, any project at Cooper Basin would primarily consist of preservation efforts, whereas Julian Mill Creek Tributary would involve intensive restoration.

Cooper Basin and Julian Mill Tributary will be further investigated as potential mitigation areas.

Gulf to Bay, Segment 2 (FPID 410911-2; 69.00-acre Impact)

FDOT is moving forward with ROW acquisition; PD&E planning is 90% complete; finalized impact UMAMs are being obtained. Ideally, mitigation would be implemented at the proposed Horseshoe Creek Mitigation Bank (located nearby and within the same 8-digit HUC basin).

However, the timeframe for when Horseshoe Creek may come online is unclear. Mitigation TBD.

CR 99 Pine Barren Creek River Bridge (FPID 430466-1)

This 1.21-acre impact in the upper Escambia River basin of the Pensacola Bay System watershed has been permitted with mitigation directed to the Mystic Springs area. The Mystic Springs project will entail establishment of bottomland hardwood forest on NFWWMD lands in a former sand mine adjacent to the Escambia River. Upon receipt of mitigation funds, NFWWMD will begin the implementation process (tentatively expected to be implemented in early 2017).

SR 300 Multiuse Path at Eastpoint (FPID 433568-1)

Presented as an FYI item. A 0.26-acre impact in the Apalachicola Bay watershed at Eastpoint, a USACE permit has been issued with mitigation consisting of hydrologic enhancement to sawgrass marsh wetlands via construction of one low-water-crossing at St. Joseph Bay State Buffer Preserve (Southgate Project). No mitigation was required by state permits. There were no private bank or ILF options available for this impact. NFWWMD has received funds from FDOT for this project and is moving forward with implementation (expected Fall, 2016 completion).

CR 159 Attapulugus Creek Bridge (FPID 428624-1)

Located in the upper Ochlockonee River watershed, mitigation for this 0.82-acre impact is expected to consist of credits from the Shuler ILF Mitigation Area (ample credits are available). The impact is not within the service area of any private mitigation bank. The anticipated letting date is 6/20/2018.

US 90A (from CR 99 to I-10; FPID 218605-6)

US 90A (from I-10 to SR 297; FPID 218605-7)

Combined, these two road segments have an estimated 2.00-acre impact to jurisdictional wetlands. Located in the Perdido watershed, no private mitigation bank option is available. NFWWMD received mitigation funds from FDOT in June, 2016 and is ready to debit credits from the Dutex ILF site (ample credits available) when permits are issued.

Panama City Crayfish

Conservation of the Panama City Crayfish (*Procambarus econfinae*), currently a state-listed Species of Special Concern and candidate for federal listing, was discussed in relation to several

planned FDOT road projects. Found only in the Panama City area, this species is under review by the FWC for reclassification as a state Threatened species.

NWFWMD Mitigation Project Updates

A brief update was presented on recent land management activities at several NWFWMD mitigation sites.

Meeting Agenda and PowerPoint Attached

Additional Information Available at www.NWFWMDwetlands.com

FDOT District-3 Review Team Meeting

Thursday, August 18th, 2016

10 AM EDT / 9 AM CDT

FDOT District-3 Midway Operations Office
Midway, FL

- Mitigation program status
- Cooper Basin
- FDOT projects
 - SR 4 Blackwater River Bridge / SR 87 (from CR 178 to SR 4) / SR 87 (from end of 4-lane to Coldwater Creek)—mitigation TBD (consideration of combining mitigation)
 - Gulf to Bay, Segment 2—mitigation TBD
 - CR 99 Pine Barren Creek Bridge—mitigation at Mystic Springs (permits issued)
 - SR 300 Multiuse Path at Eastpoint—mitigation at St. Joseph Bay State Buffer Preserve, Southgate site (permits issued)
 - CR 159 Attapulugus Creek Bridge—mitigation anticipated at Shuler ILF
 - US 90A (from CR 99 to I-10) and US 90A (from I-10 to SR 297)—mitigation anticipated at Dutex ILF
- Panama City Crayfish
- NFWFMD mitigation project updates (time permitting)
- Open discussion / other business

FDOT District-3 Mitigation Review Team Meeting

18 August 2016

(FDOT Midway Operations Center)



**US Army Corps
of Engineers®**



Discussion Items

- Mitigation program status
- Cooper Basin
- FDOT projects
 - SR 4 and SR 87 segments [mitigation TBD; potential combining of mitigation]
 - SR 4 Blackwater River Bridge
 - SR 87 (from CR 178 to SR 4)
 - SR 87 (from end of 4-lane to Coldwater Creek)
 - Gulf to Bay, Segment 2 [mitigation TBD]
 - CR 99 Pine Barren Creek Bridge [mitigation: Mystic Springs]
 - SR 300 Multiuse Path at Eastpoint [mitigation: St. Joseph Bay State Buffer Preserve]
 - CR 159 Attapulugus Creek Bridge [mitigation: Shuler ILF]
 - US 90A (from CR 99 to I-10) and US 90A (from I-10 to SR 297) [mitigation: Dutex ILF]
- Panama City Crayfish
- Existing mitigation site updates
- Other business / open discussion

Mitigation Program Status

- Program operation
- Private mitigation banks (existing and proposed)
- ILF program / availability of credits

Cooper Basin - 2013 DOQ



0 0.5 1 Miles



Cooper Basin - 1940 B&W Aerial



0 0.5 1 Miles



Cooper Basin - 1946 B&W Aerial



0

0.5

1

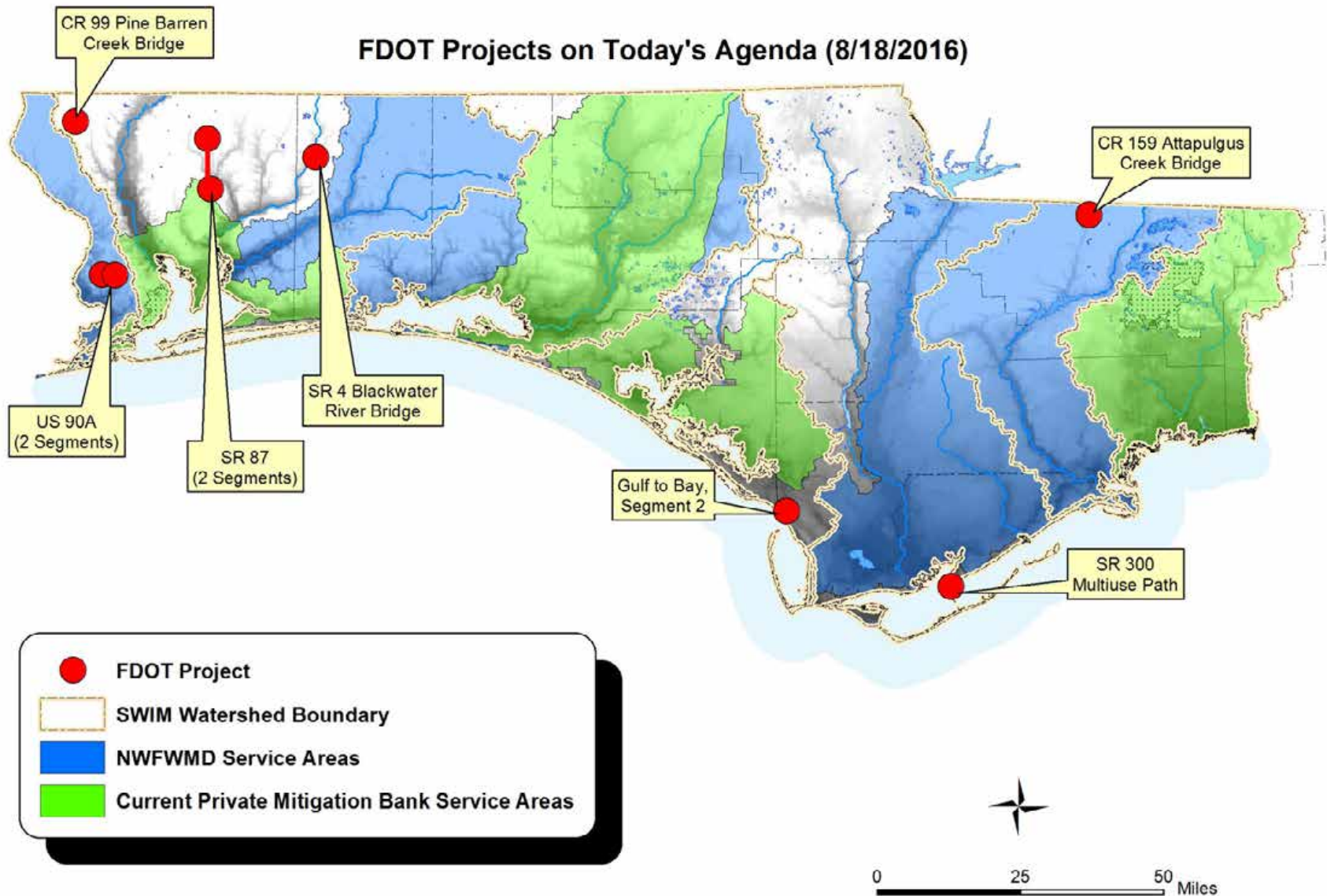
Miles



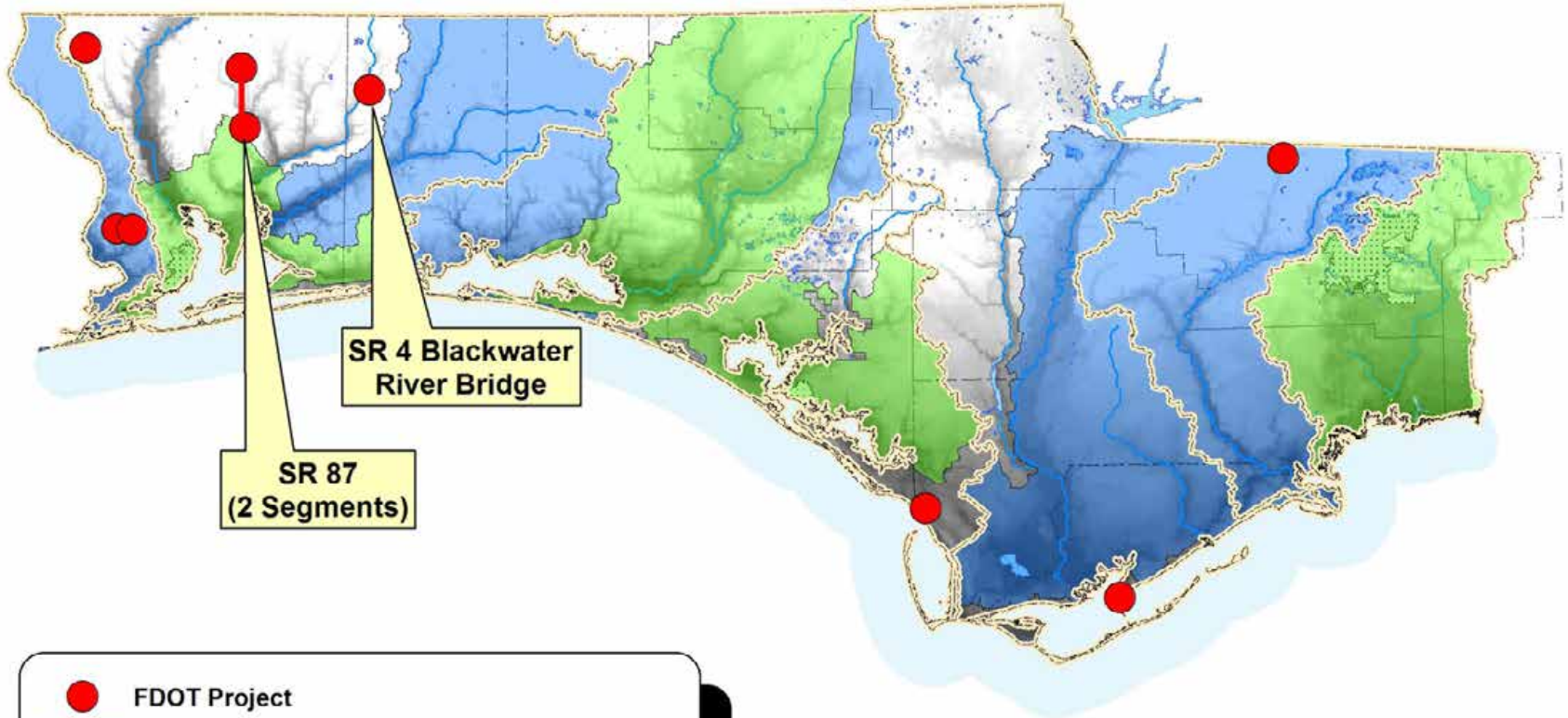
Cooper Basin - 1955 B&W Aerial



FDOT Projects on Today's Agenda (8/18/2016)



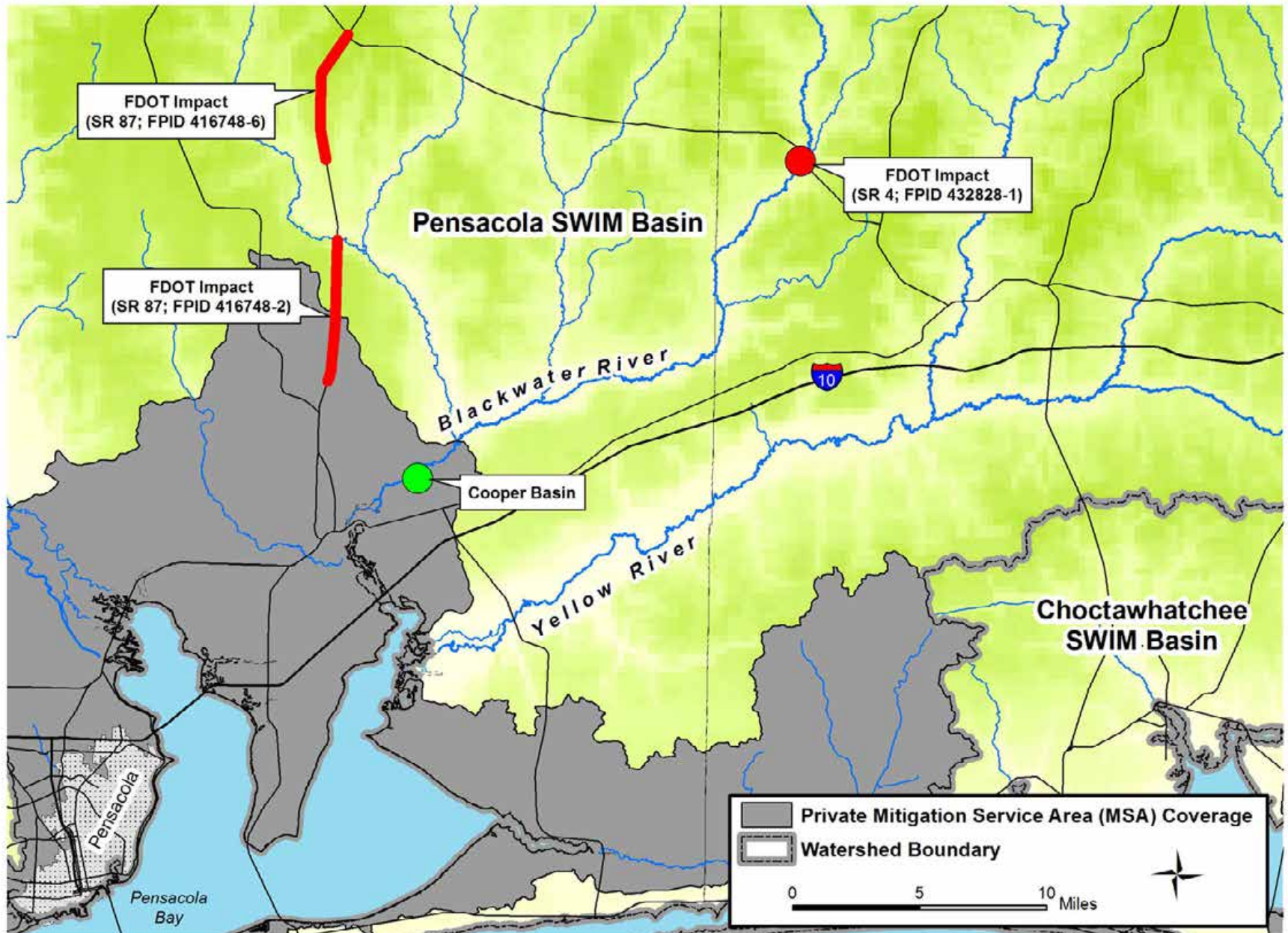
FDOT Projects on Today's Agenda (8/18/2016)



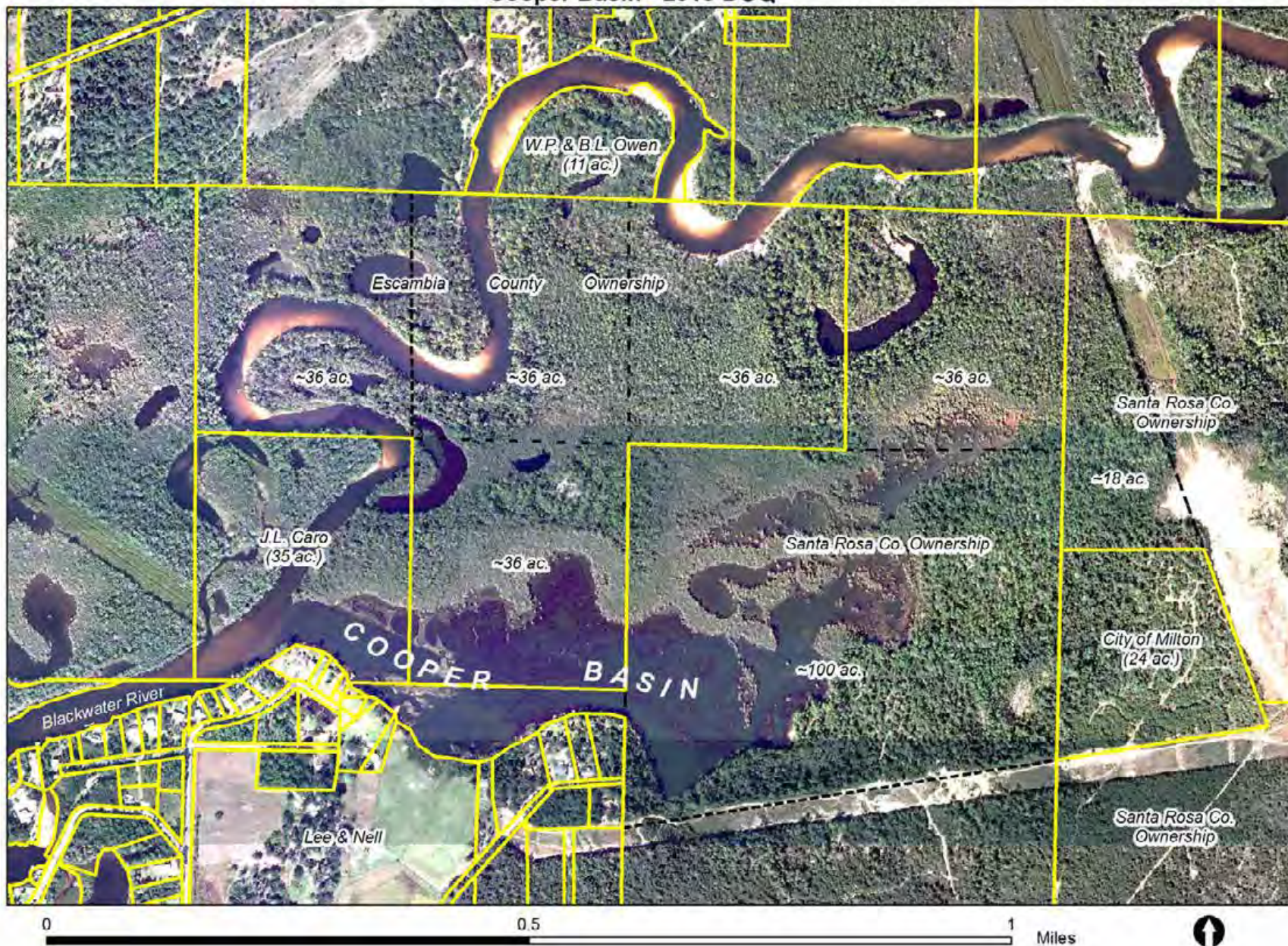
-  FDOT Project
-  SWIM Watershed Boundary
-  NFWMD Service Areas
-  Current Private Mitigation Bank Service Areas



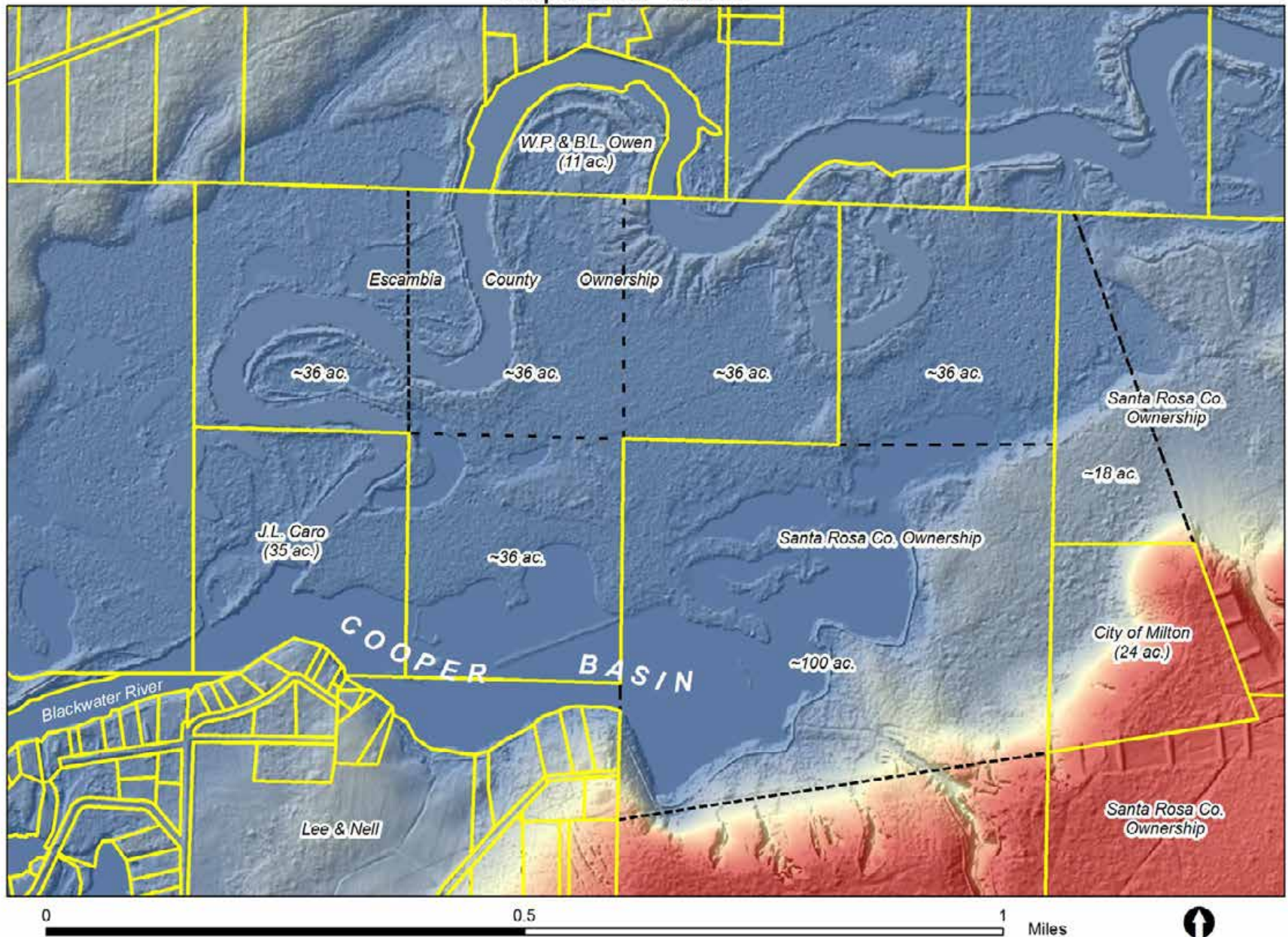
Cooper Basin in Relation to FDOT Impacts



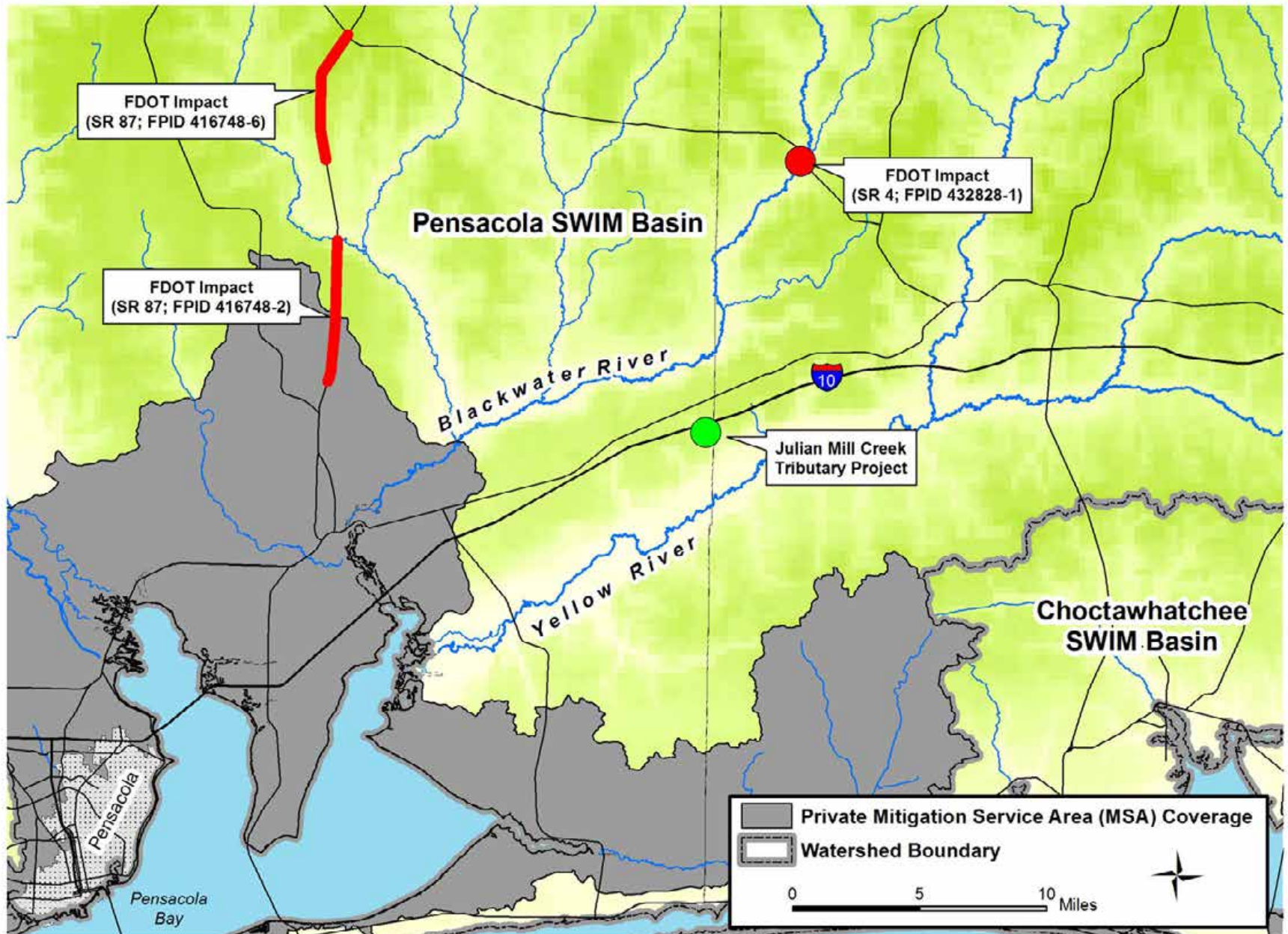
Cooper Basin - 2013 DOQ



Cooper Basin - LiDAR



Julian Mill Creek Tributary Project in Relation to FDOT Impacts



Julian Mill Creek Tributary Restoration - 2013 DOQ



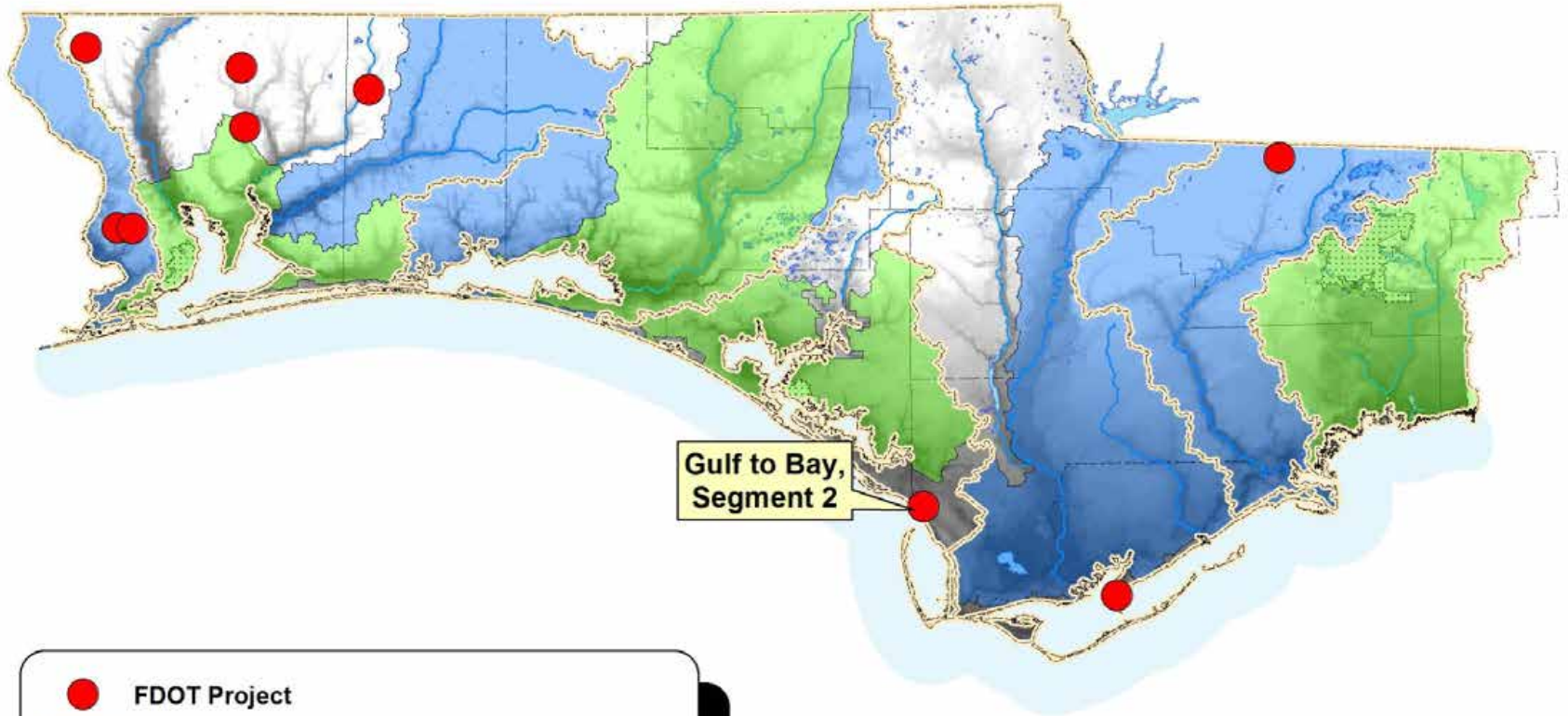
Julian Mill Creek Tributary Restoration - 2013 DOQ



Julian Mill Creek Tributary Restoration - LiDAR



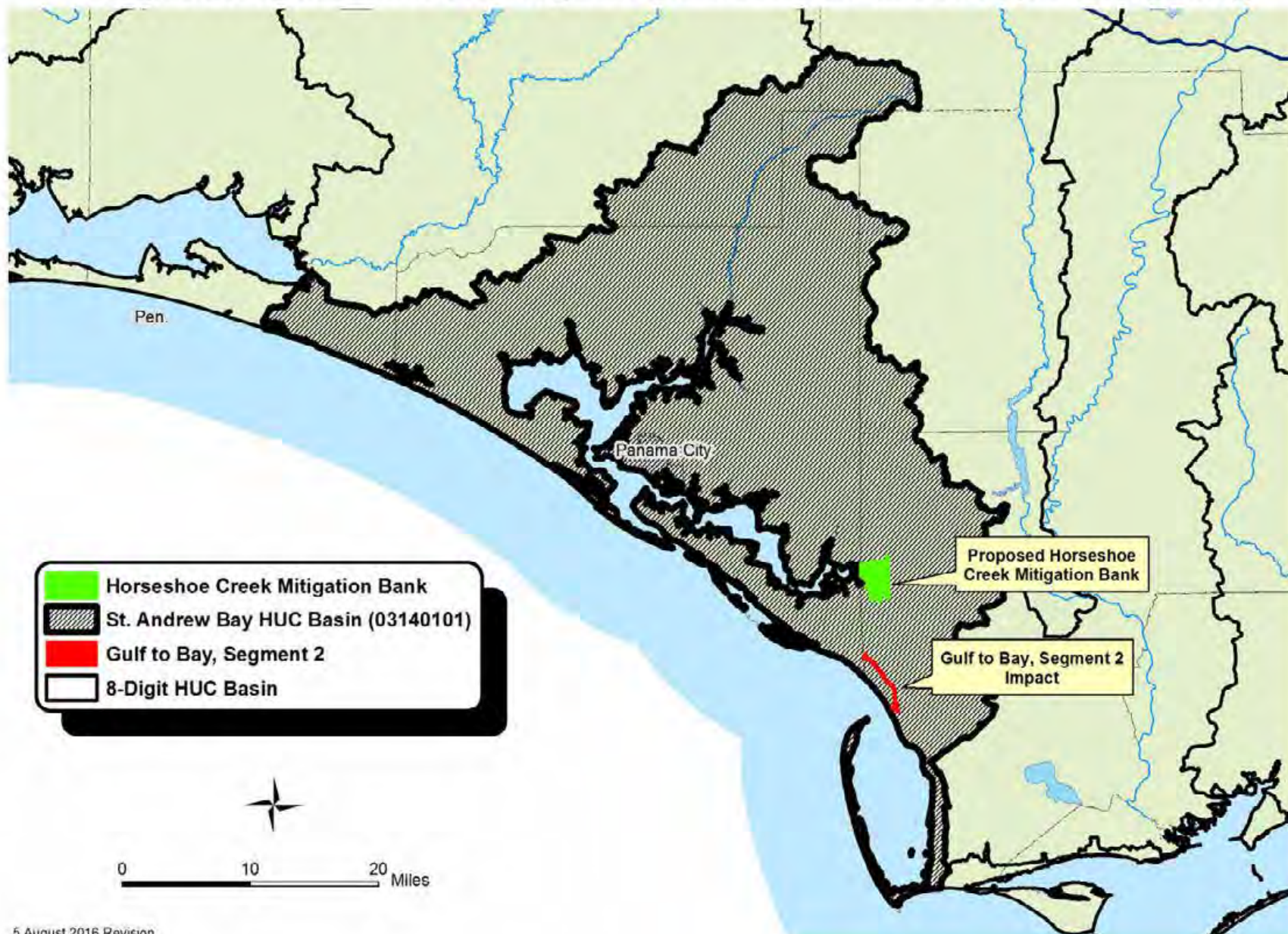
FDOT Projects on Today's Agenda (8/18/2016)



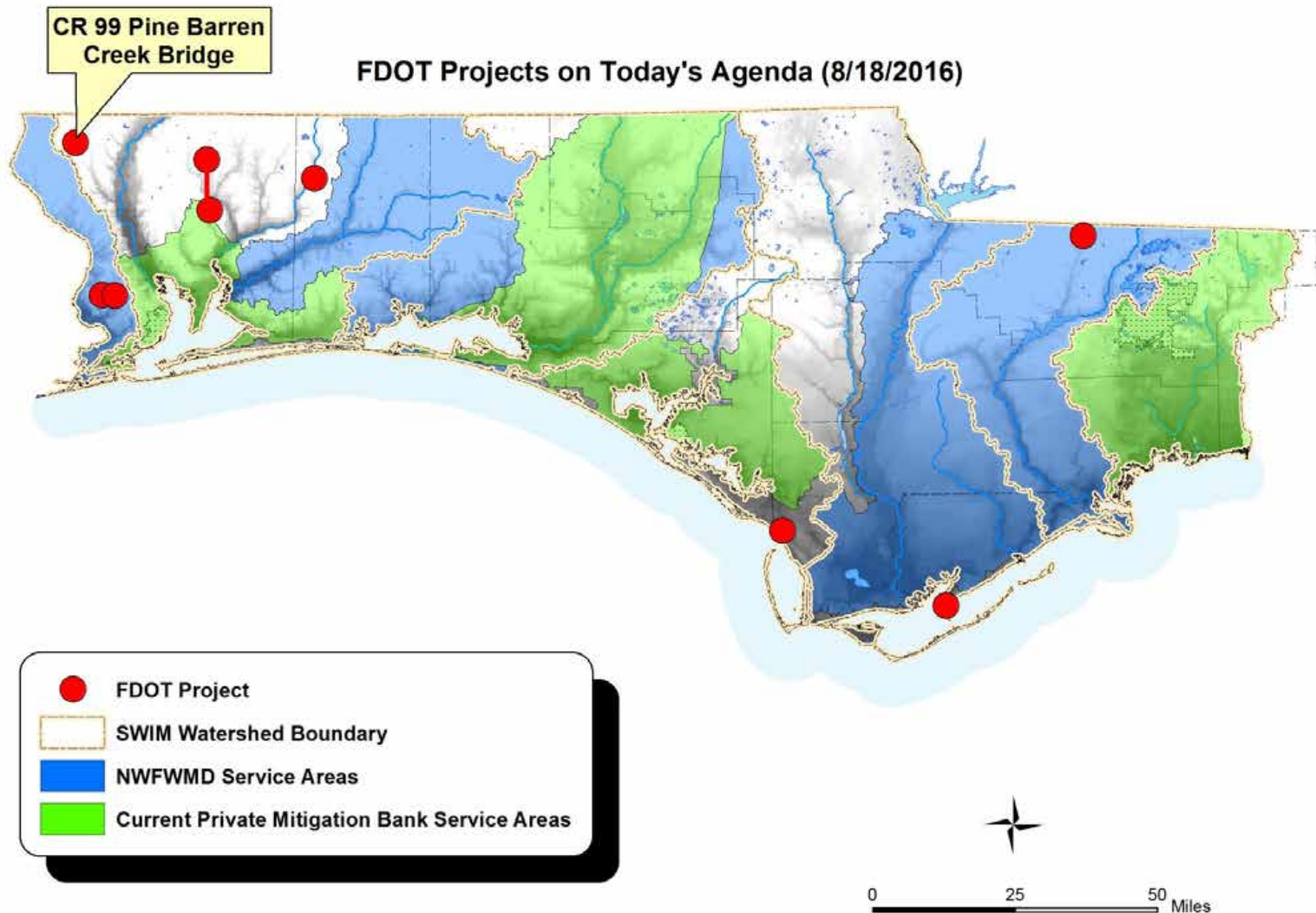
- FDOT Project
- SWIM Watershed Boundary
- NFWMD Service Areas
- Current Private Mitigation Bank Service Areas



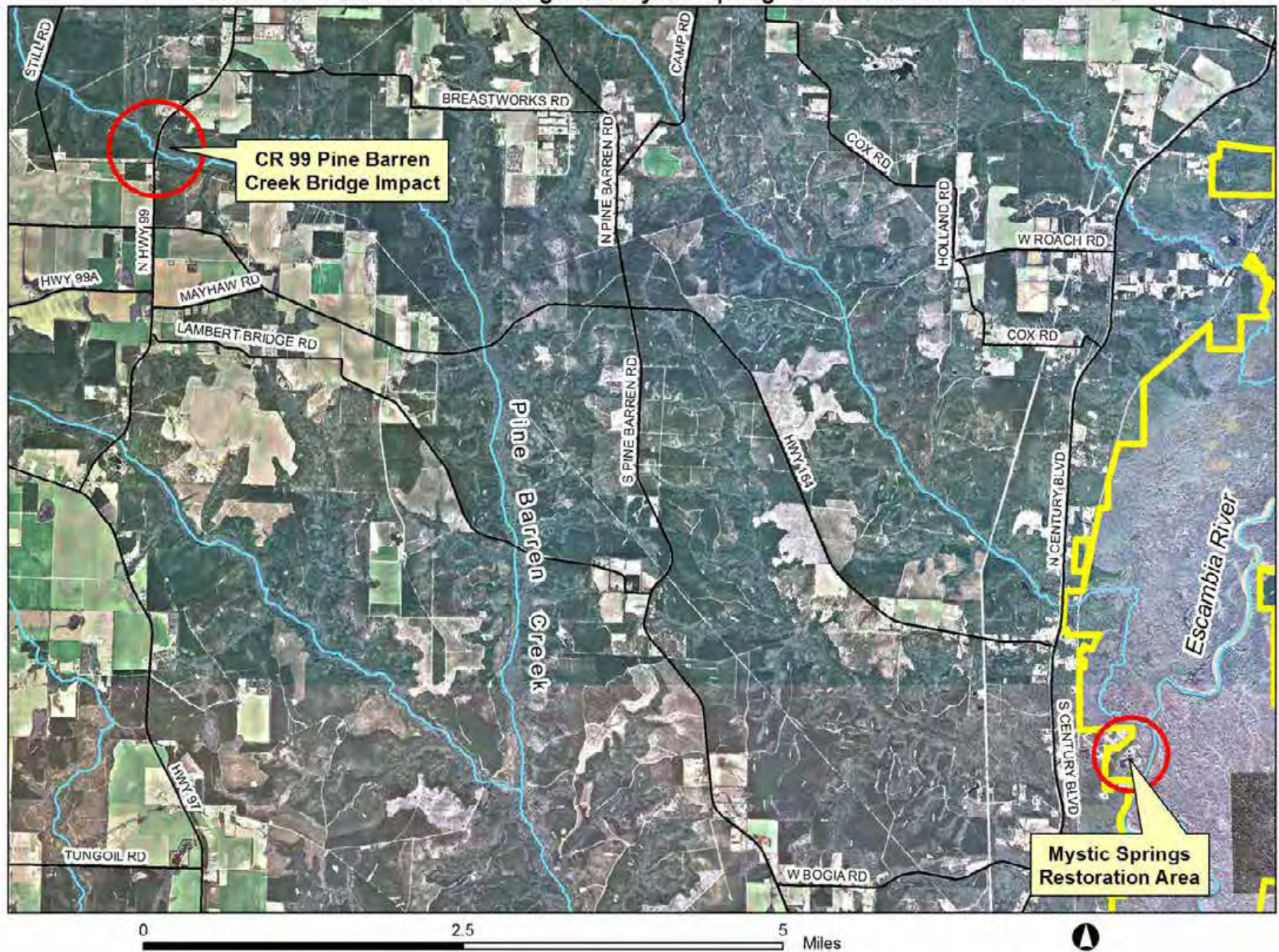
Proposed Horseshoe Creek Mitigation Bank and HUC 03140101 (St. Andrew Bay)



CR 99 Pine Barren Creek Bridge



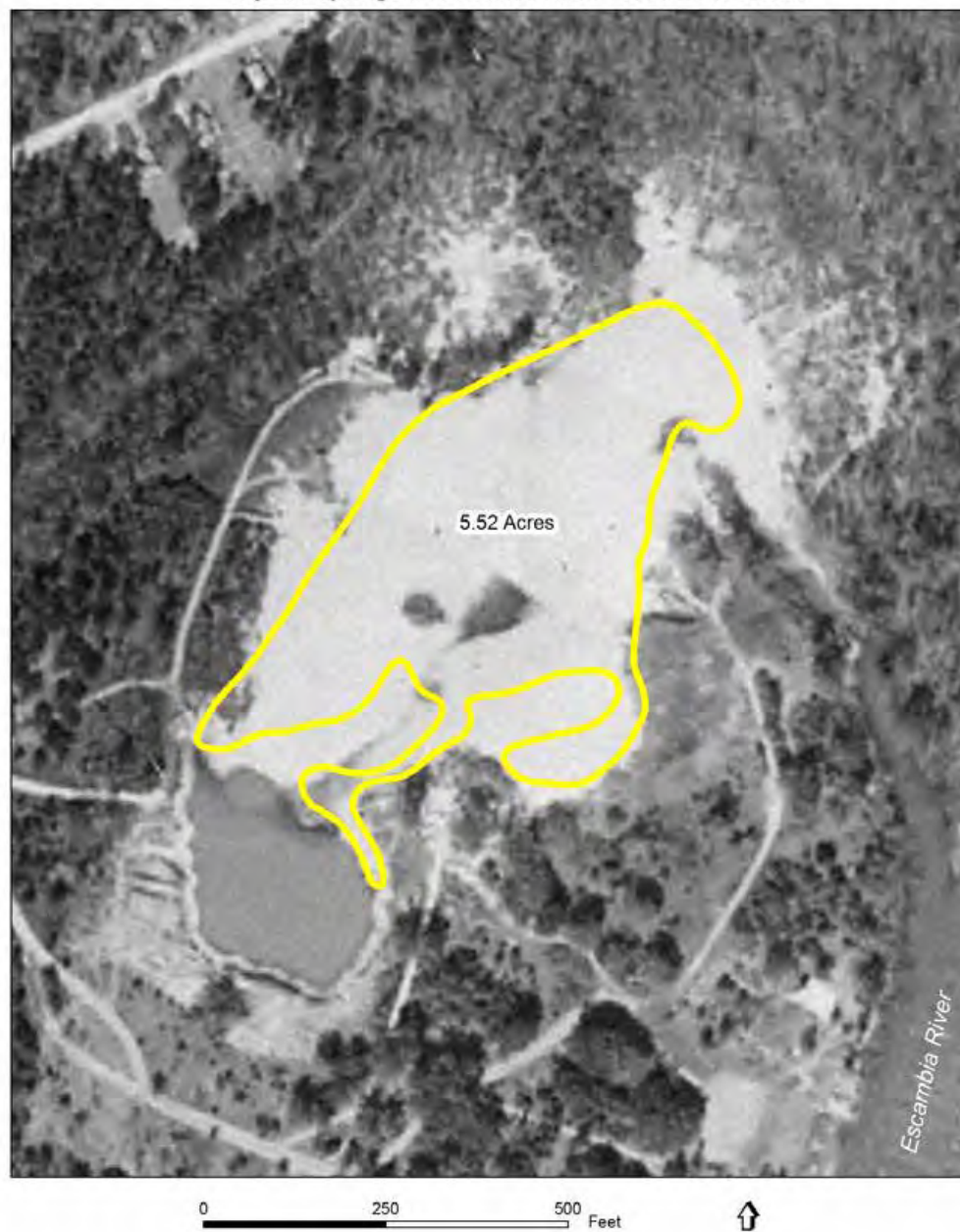
CR 99 Pine Barren Creek Bridge and Mystic Springs Restoration Area - 2013 DOQ



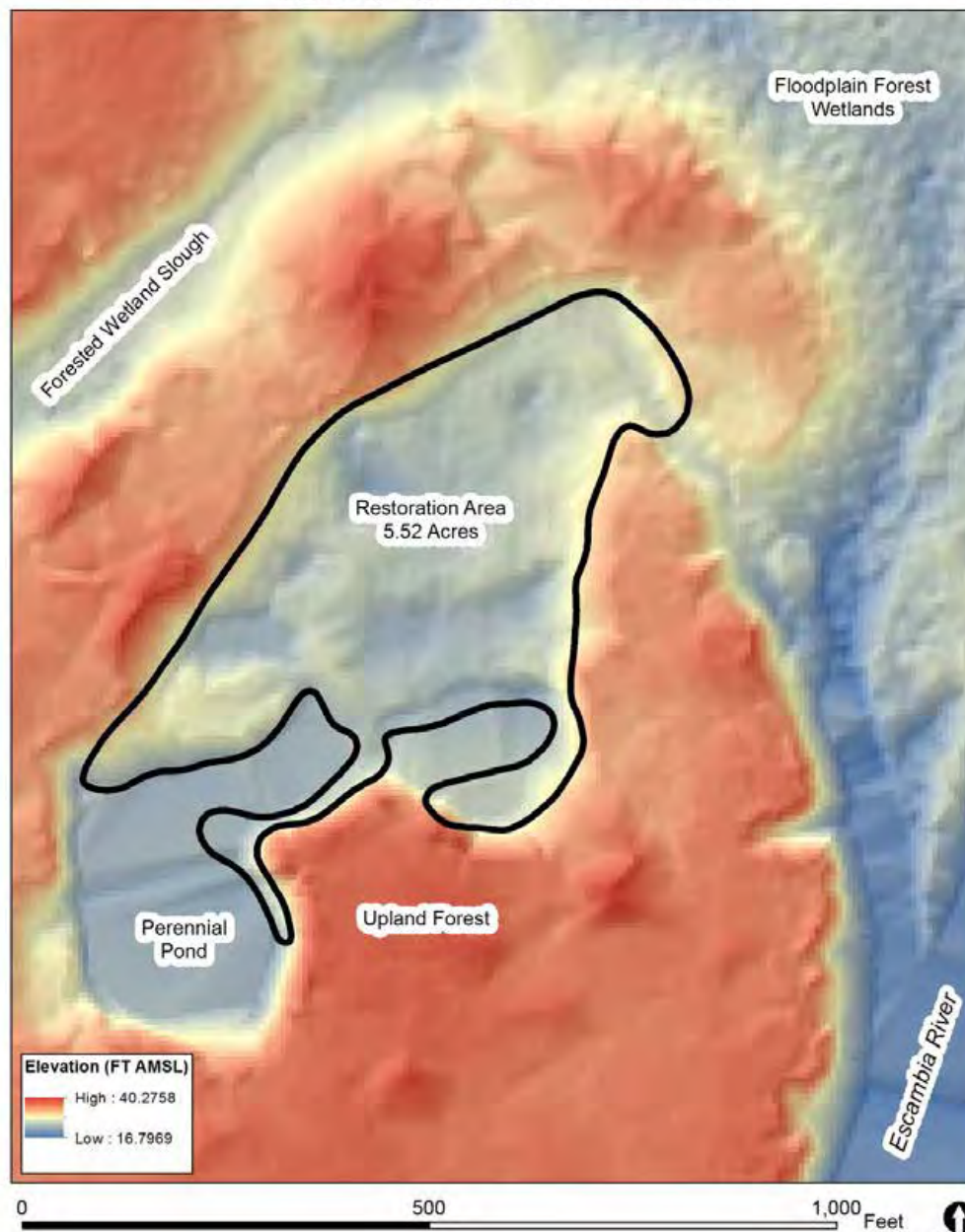
Mystic Springs Restoration Area - 2013 DOQ



Mystic Springs Restoration Area - 1955 B&W Aerial



Mystic Springs Restoration Area - LiDAR



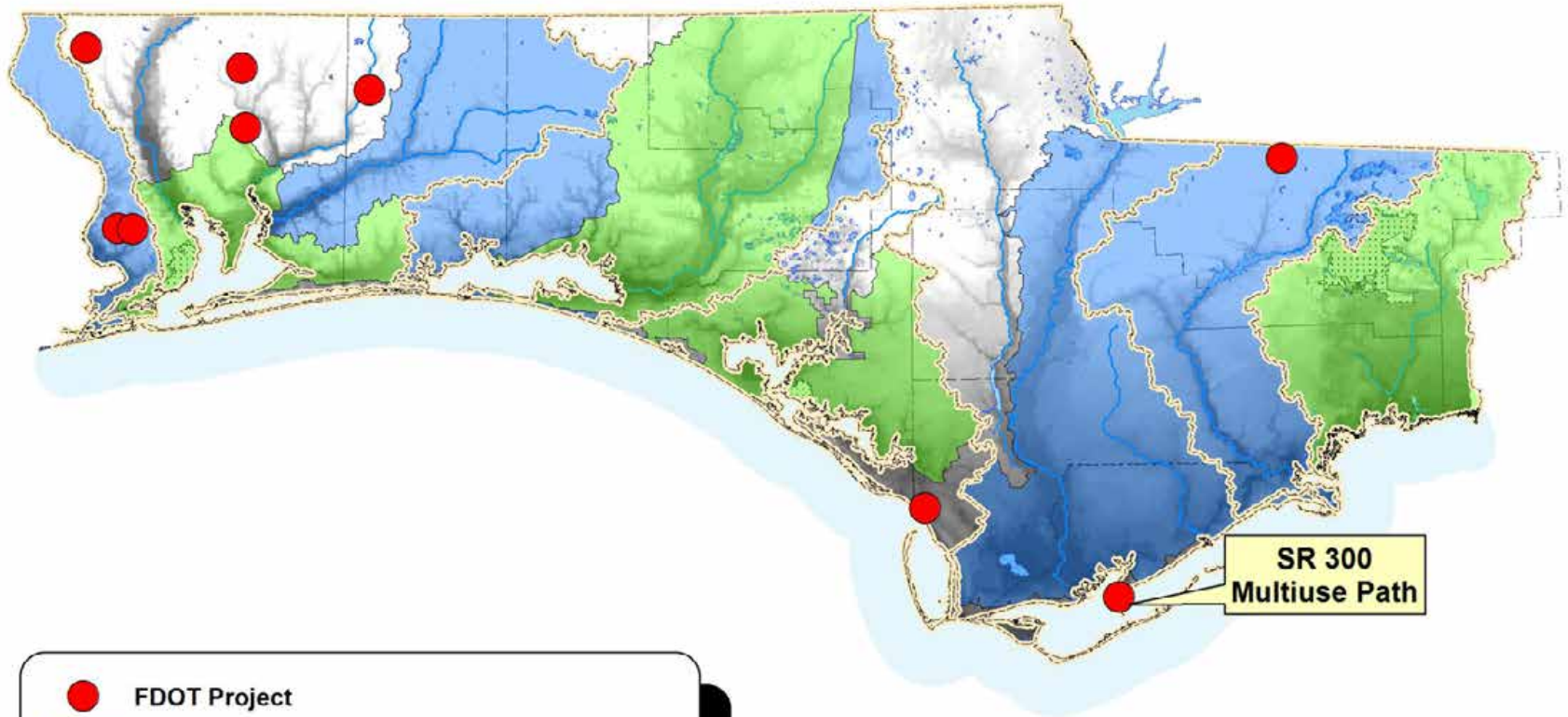
Mystic Springs Restoration Area



Mystic Springs Restoration Area



FDOT Projects on Today's Agenda (8/18/2016)

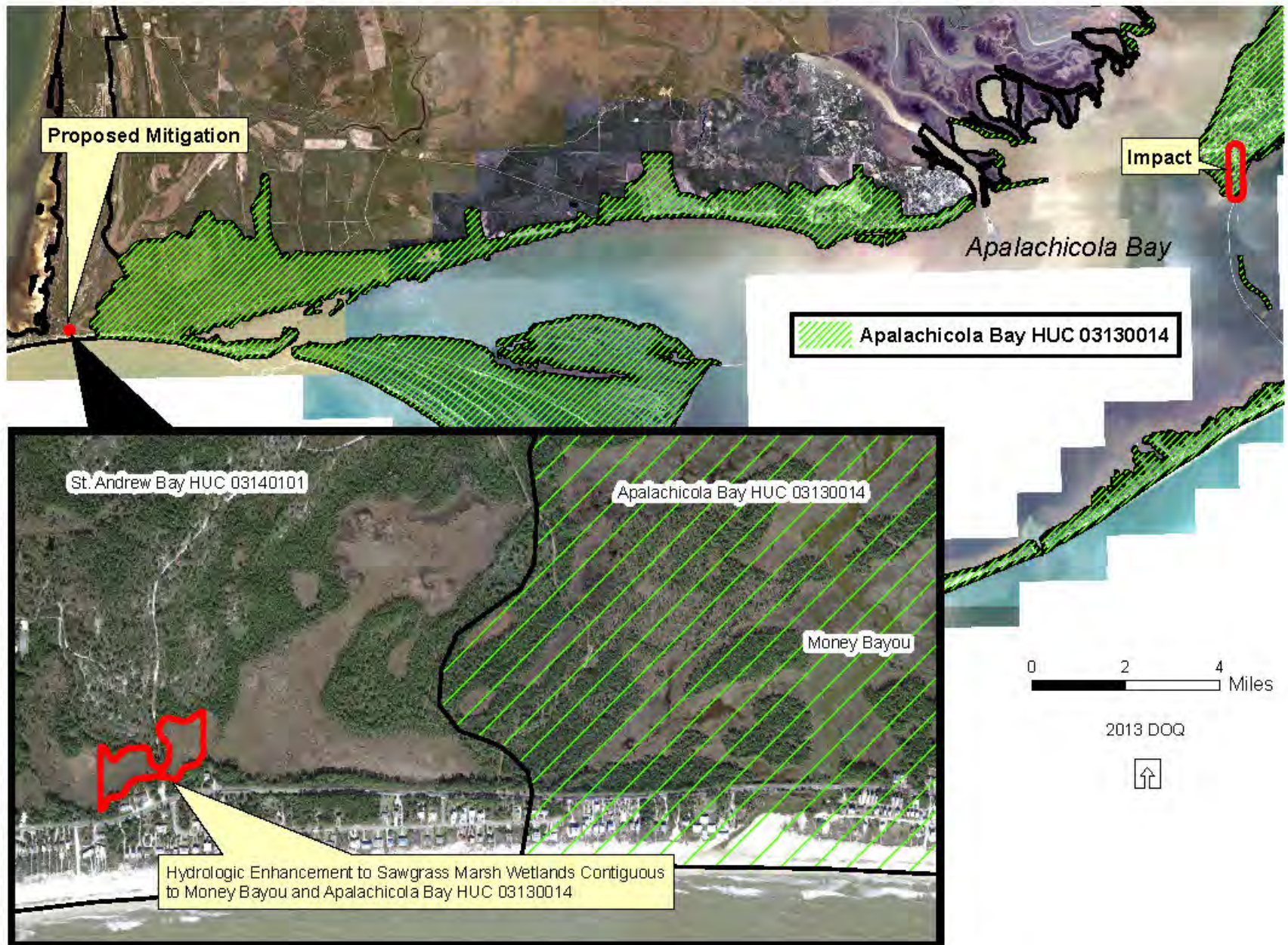


- FDOT Project
- SWIM Watershed Boundary
- NFWMD Service Areas
- Current Private Mitigation Bank Service Areas



0 25 50 Miles

SR 300 Multiuse Path and Proposed Mitigation at St. Joseph Bay State Buffer Preserve



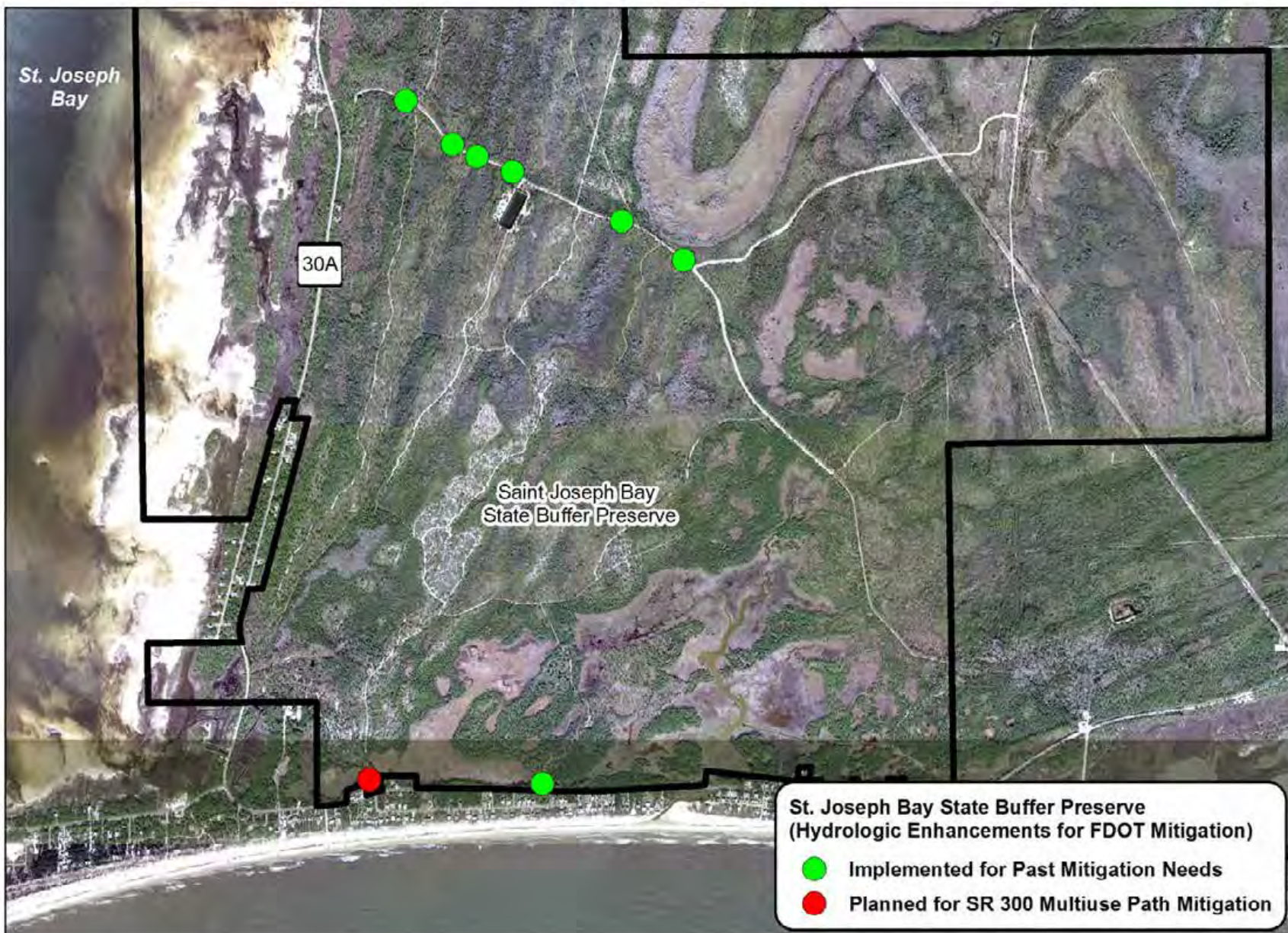
Southgate / Sandridge Road - Wetland Hydrologic Enhancement Polygons



2013 DOQ

0 250 500 Feet





Southgate Project



Current Condition



Current Condition

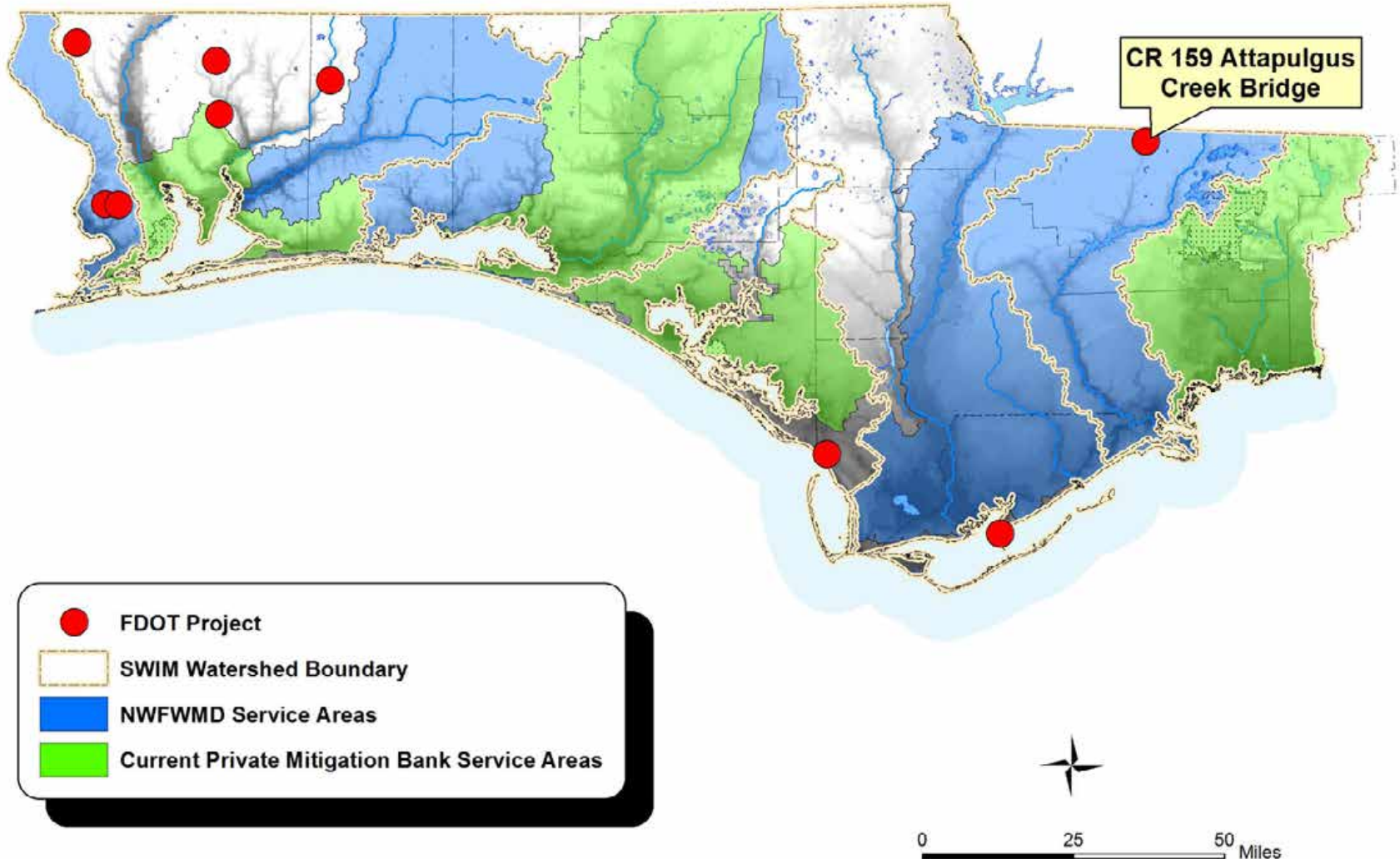


Current Condition

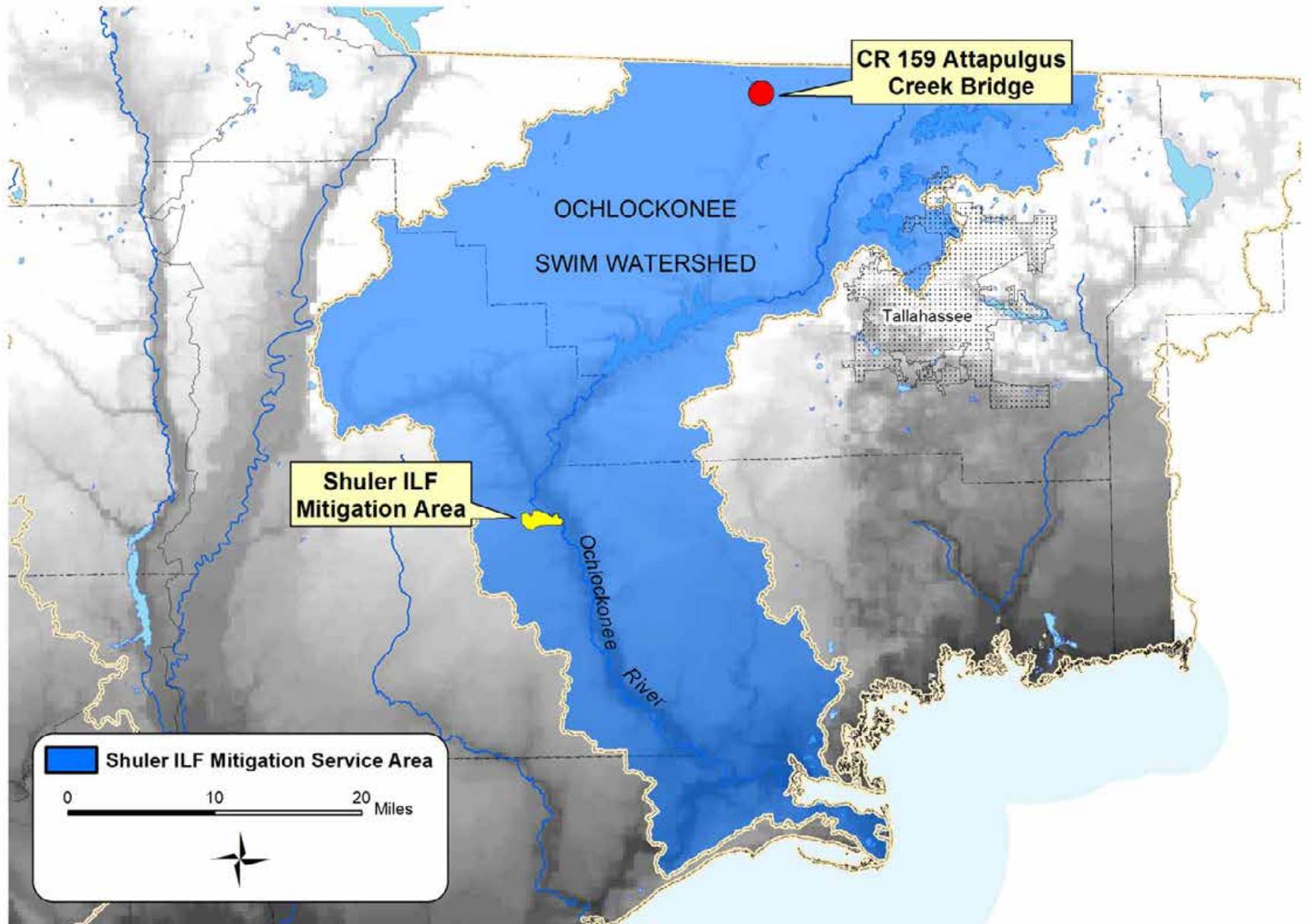


Island Road Low-Water-Crossing
(1/2 Mile East of Southgate)

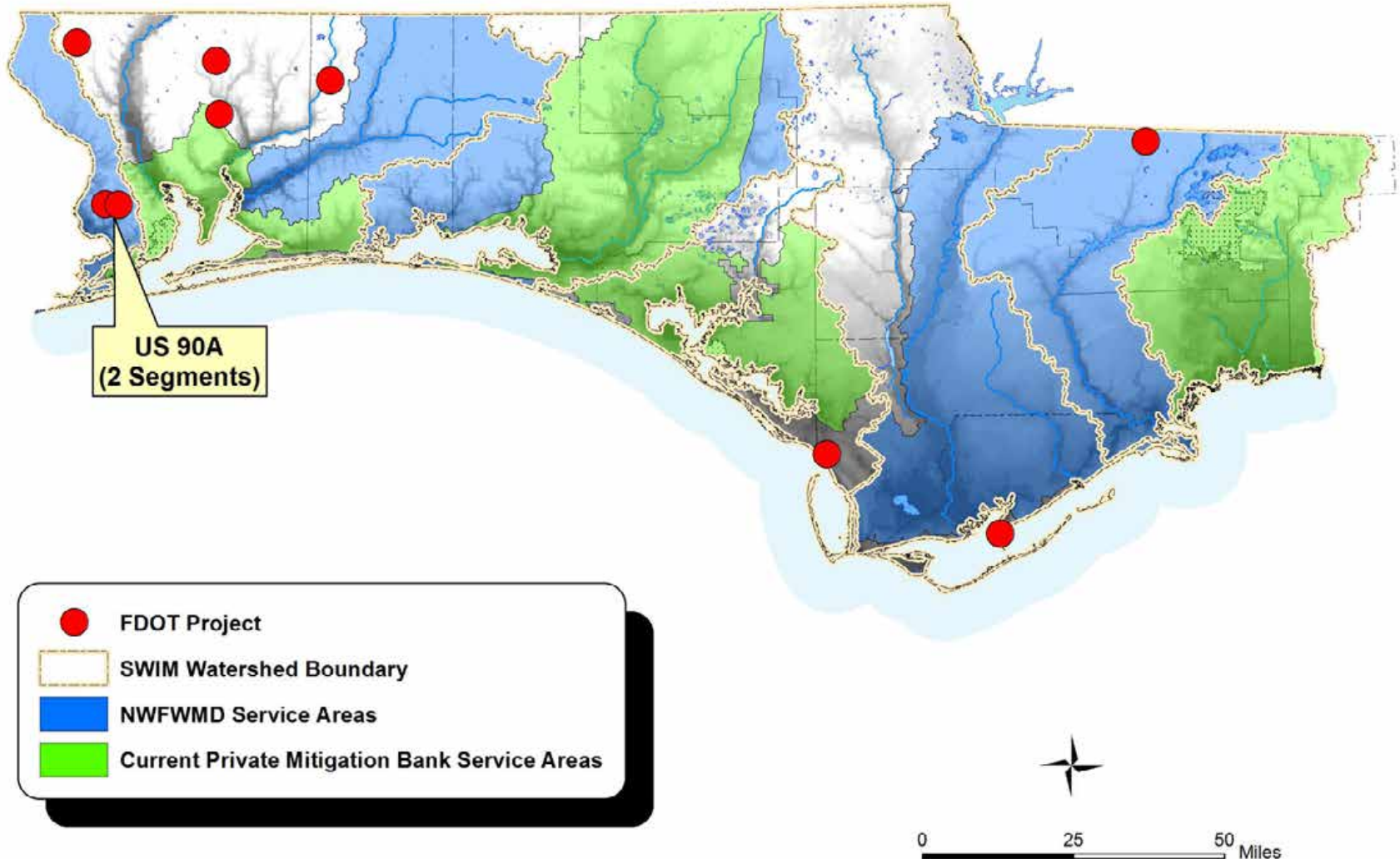
FDOT Projects on Today's Agenda (8/18/2016)



Shuler ILF Mitigation Area in Relation to CR 159 Attapulugus Creek Bridge



FDOT Projects on Today's Agenda (8/18/2016)



US 90A Improvements and Dutex ILF Mitigation Area



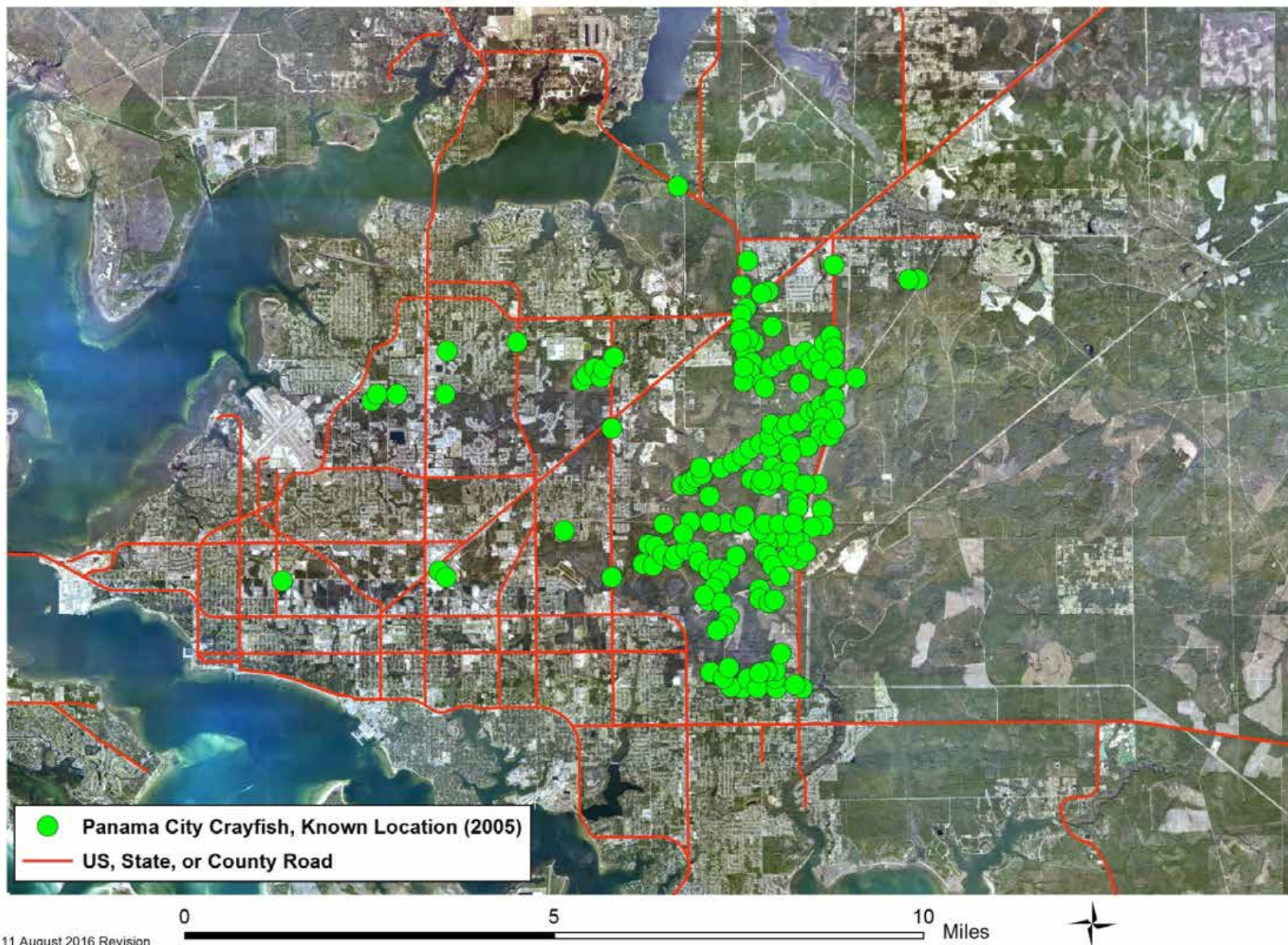
PANAMA CITY CRAYFISH
MANAGEMENT PLAN
Procambarus econfinae

- Draft -
February 2016



Florida Fish and Wildlife Conservation Commission
620 South Meridian Street
Tallahassee, FL 32399-1600
Visit us at MyFWC.com

Panama City Crayfish Occurrence (2005, USFWS Data)



NWFWMD Mitigation Project Updates

Sand Hill Lakes Mitigation Bank

In-Lieu Fee Projects

- Dutex, Yellow River Ranch, Lafayette Creek, Ward Creek West, Tates Hell, Shuler, Live Oak Peninsula

Non In-Lieu Fee Projects

- Perdido II, Plum Creek, St. Joseph Bay State Buffer Preserve (Treasure Road, Island Road, Southgate), Cotton Creek

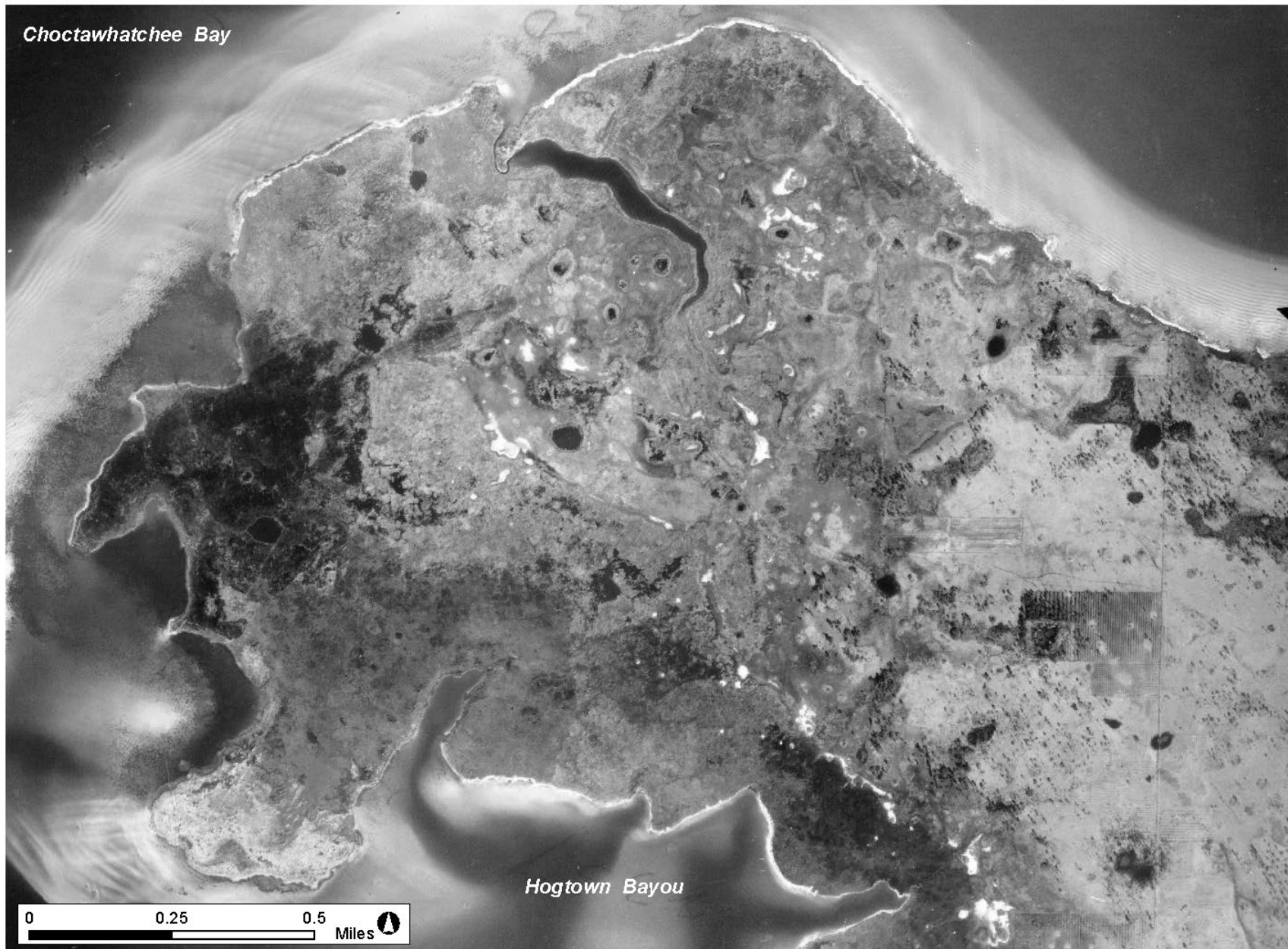
Location of Live Oak Peninsula



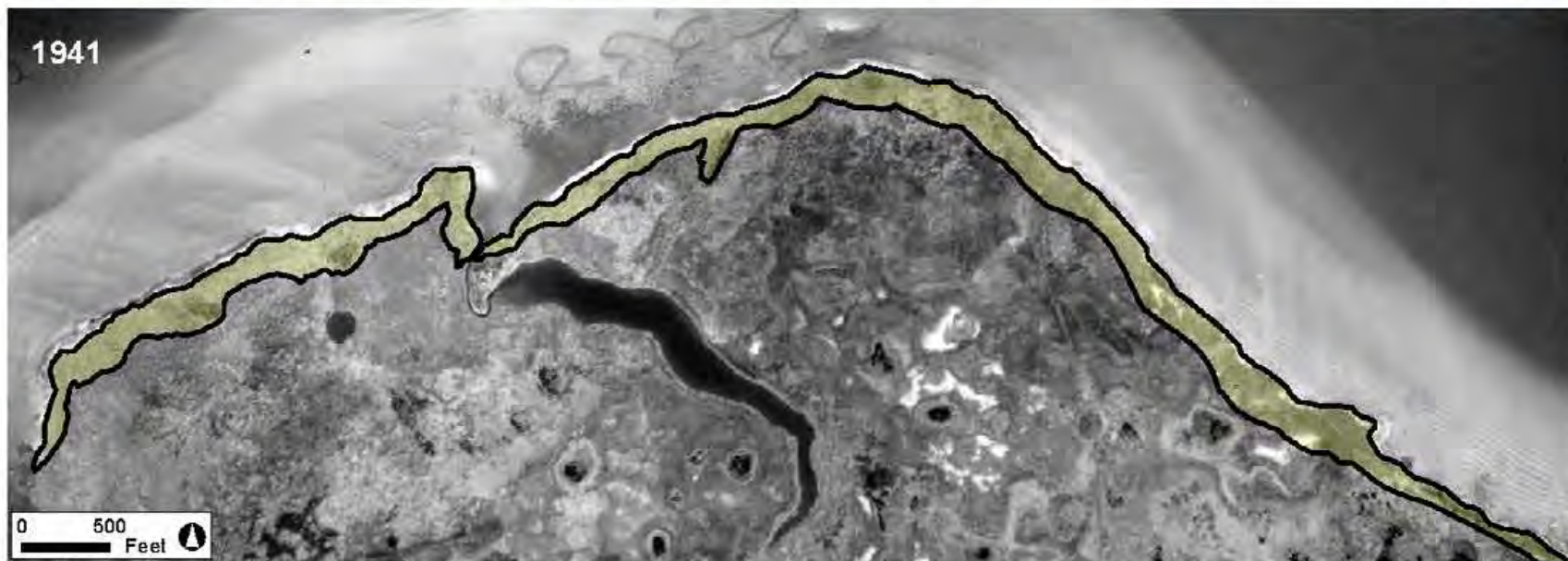
Live Oak Peninsula - 2007 DOQ



Live Oak Peninsula - 1941 B&W Aerial



Live Oak Peninsula - Northern Shoreline Erosion (1941 - 2007)



Live Oak Peninsula - Oyster Shell Breakwaters





Other Business or Concerns



US Army Corps
of Engineers®



Wrap Up



Appendix Maps

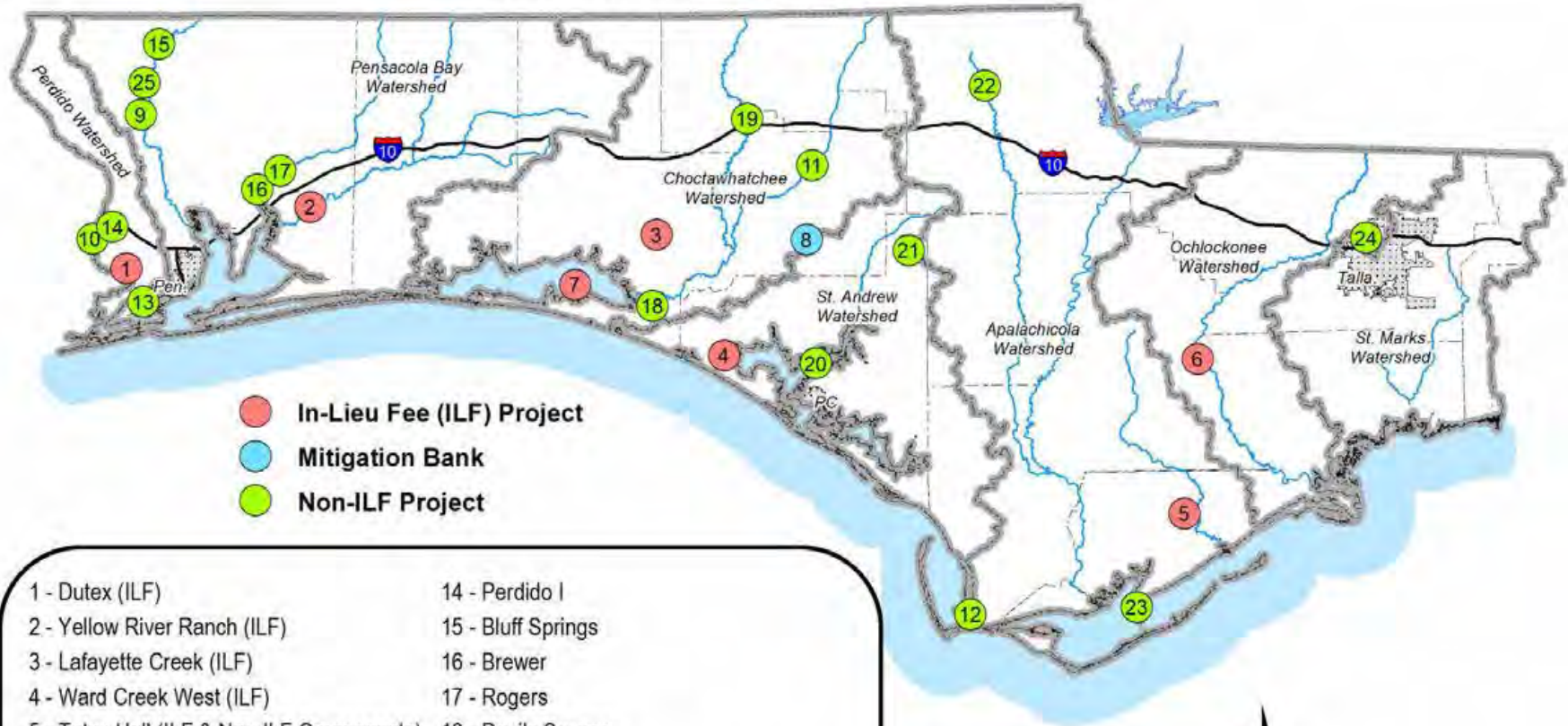
Private Mitigation Bank Service Areas in Northwest Florida



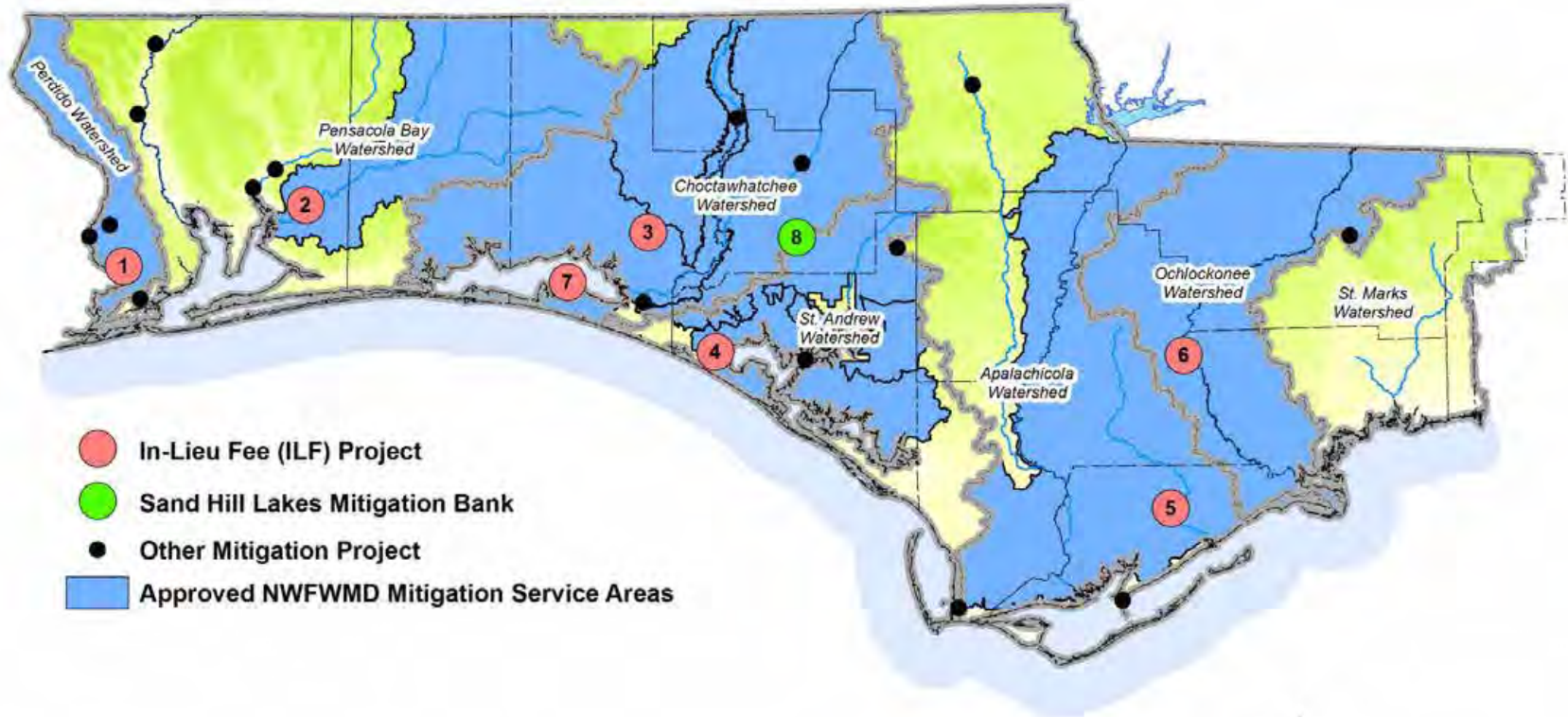
Mitigation Bank / Year Permitted

- 1 - Pensacola Bay Mitigation Bank, 2009
- 2 - Garcon Peninsula Mitigation Bank, 2001
- 3 - Nokuse Plantation Mitigation Bank, 2011
- 4 - Devils Swamp Mitigation Bank, 2010 (Mod)
- 5 - Breakfast Point Mitigation Bank, 2011 (Mod)
- 6 - Sweetwater Mitigation Bank, 2009
- 7 - St. Marks Mitigation Bank, 2011
- 8 - Bear Creek Mitigation Bank (Under Development; Proposed MSA Not Shown)
- 9 - Horseshoe Creek Mitigation Bank (Under Development; Proposed MSA Not Shown)

NFWFMD Mitigation Program



NFWWMD Mitigation Program



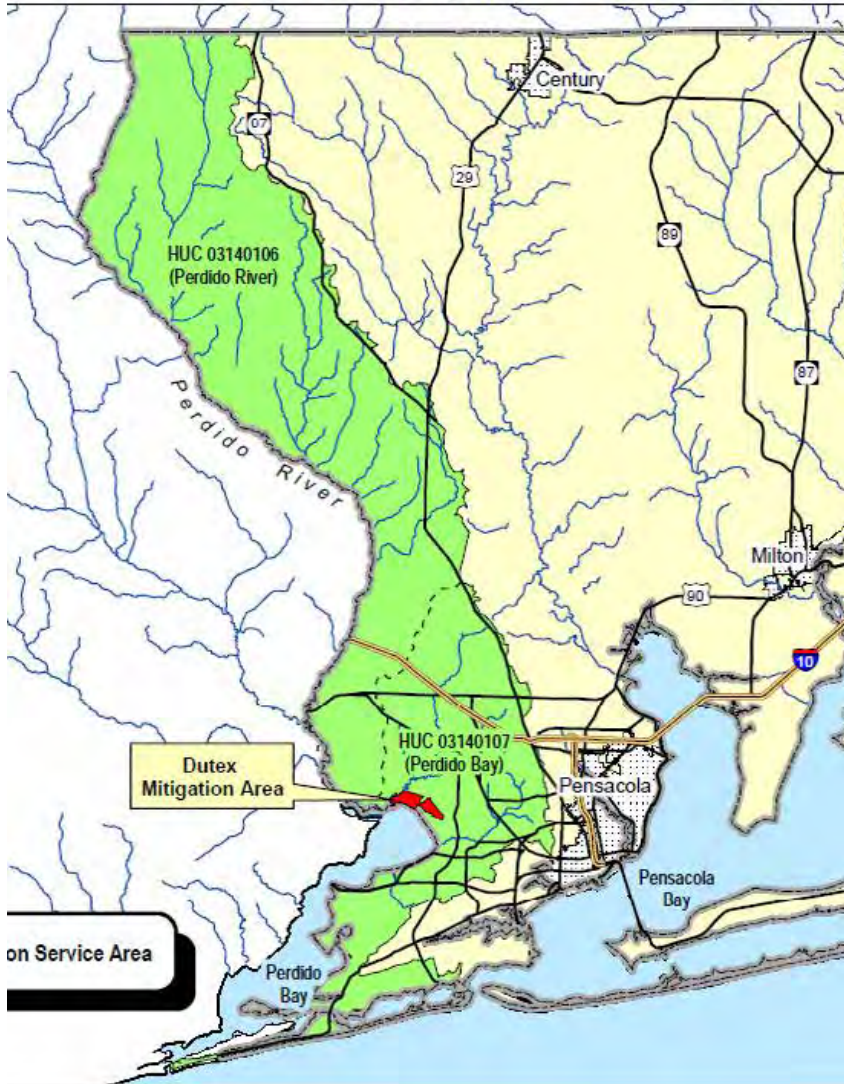
- In-Lieu Fee (ILF) Project
- Sand Hill Lakes Mitigation Bank
- Other Mitigation Project
- Approved NFWWMD Mitigation Service Areas

1 - Dutex (ILF)	21.79 Credits Used	41.51 Credits Available
2 - Yellow River Ranch (ILF)	21.41 Credits Used	1.29 Credits Available
3 - Lafayette Creek (ILF)	15.67 Credits Used	13.80 Credits Available
4 - Ward Creek West (ILF)	44.68 Credits Used	58.09 Credits Available
5 - Tates Hell (ILF)	0.81 Credits Used	35.35 Credits Available
6 - Shuler (ILF)	6.05 Credits Used	27.90 Credits Available
7 - Live Oak Peninsula (ILF)	3.98 Credits Used	0.00 Credits Available
8 - Sand Hill Lakes (Bank)	111.25 Credits Used	73.38 Credits Available



Dutex ILF Mitigation Area

Dutex Mitigation Service Area

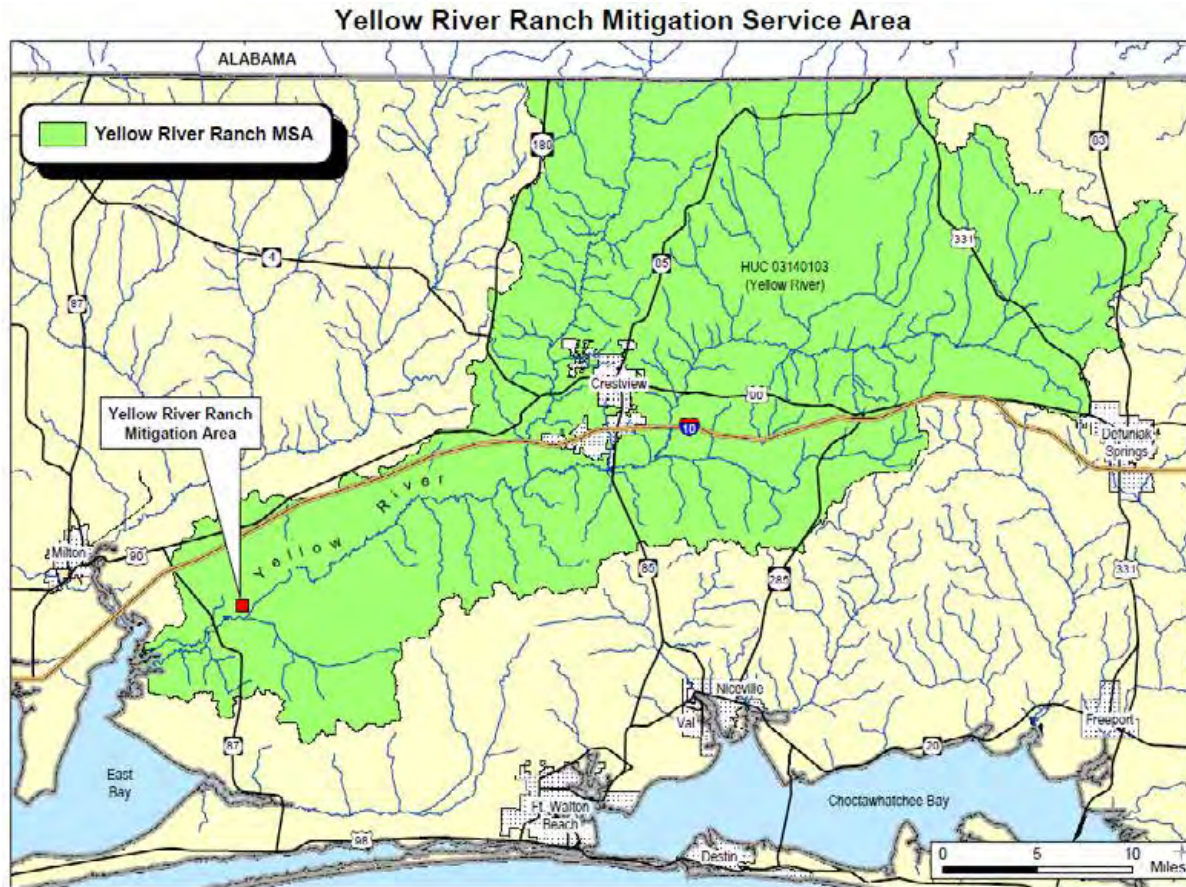


Total Potential Credits = 107.16

- Estuarine Emergent
 - 10.15 (Potential)
 - 6.00 (Released)
 - 0.00 (Debited)
 - 6.00 (Balance)
- Palustrine Emergent
 - 7.58 (Potential)
 - 4.48 (Released)
 - 0.00 (Debited)
 - 4.48 (Balance)
- Palustrine Scrub/Shrub
 - 0.52 (Potential)
 - 0.31 (Released)
 - 0.00 (Debited)
 - 0.31 (Balance)
- Palustrine Forested
 - 88.90 (Potential)
 - 52.51 (Released)
 - 22.21 (Debited)
 - 30.30 (Balance)

Note--these credits totals are subject to minimal adjustment resulting from use of an updated project boundary. Current total available credit balance is 41.09. No private banks exist or are known to be under development in the Perdido watershed.

Yellow River Ranch ILF Mitigation Area



Total Potential Credits = 33.88

- Palustrine Emergent
 - 11.89 (Potential)
 - 7.96 (Released)
 - 7.96 (Debited)
 - 0.00 (Balance)
- Palustrine Forested
 - 21.99 (Potential)
 - 14.74 (Released)
 - 5.47 (Debited)
 - 9.27 (1.29 State Balance)

No additional credit releases anticipated for 5+ years. Federal/State credit balance difference results from a federal requirement of 11.03 credits and a state requirement of 19.01 credits for SR 87 at Yellow River Bridge. No private mitigation bank options in this area.

Lafayette Creek ILF Mitigation Area

Lafayette Creek Mitigation Service Area



Total Potential Credits = 50.30

Palustrine Forested

- 50.30 (Potential)
- 29.47 (Released)
- 15.67 (Debited)
- 13.80 (Balance)

Majority of service area is covered by private mitigation banks.

Live Oak ILF Mitigation Area

Live Oak Peninsula Mitigation Service Area



Total Potential Credits = 3.98

Palustrine Forested

- 2.66 (Potential)
- 2.66 (Released)
- 2.66 (Debited)
- 0.00 (Balance)

Estuarine Emergent

- 2.66 (Potential)
- 2.66 (Released)
- 2.66 (Debited)
- 0.00 (Balance)

No private banks in this area have estuarine credits. Consideration of expansion of Live Oak project to generate additional estuarine credits?

Ward Creek West ILF Mitigation Area

Ward Creek West Mitigation Service Area



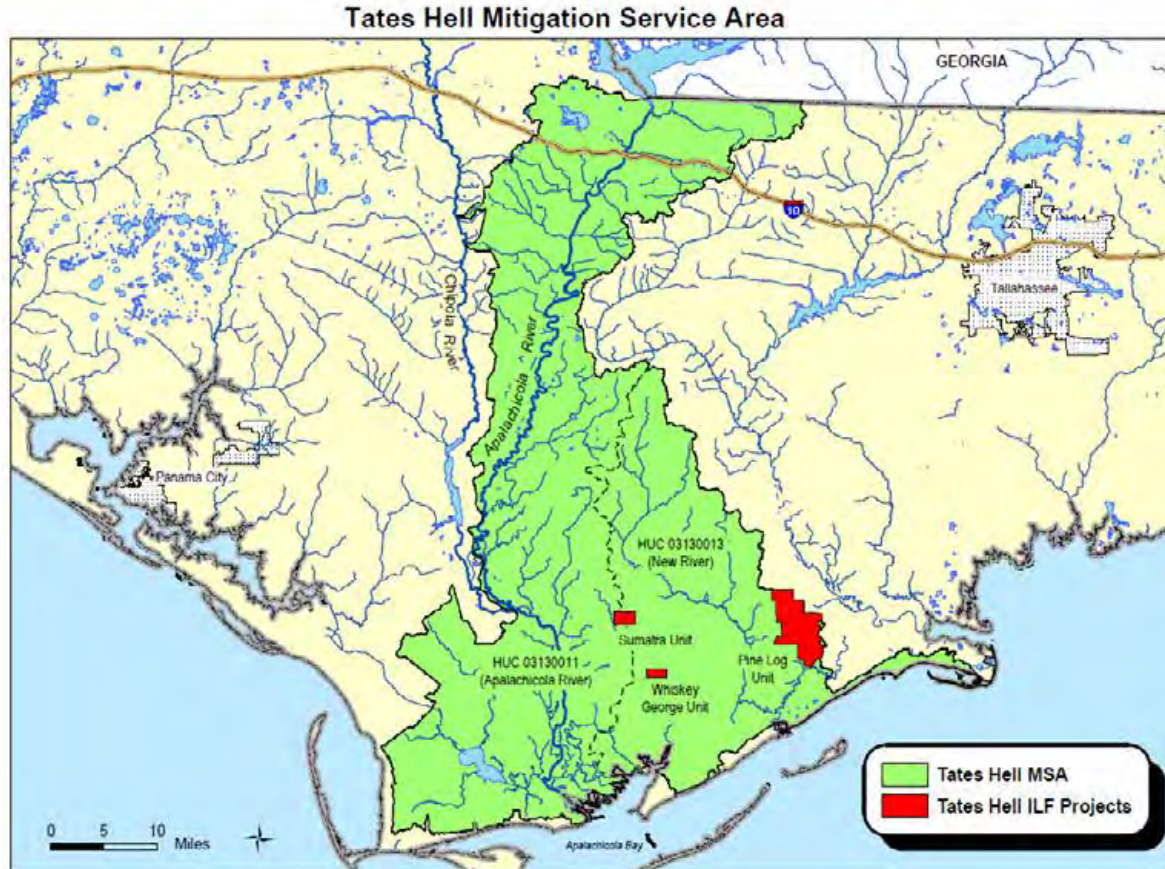
Total Potential Credits = 173.76

Palustrine Forested

- 173.76 (Potential)
- 102.77 (Released)
- 67.06 (Debited)
- 35.71 (Balance)

Multiple private mitigation banks in area. NFWFMD does not compete with private banks.

Tates Hell ILF Mitigation Area



Total Potential Credits =
50.30

Palustrine Emergent

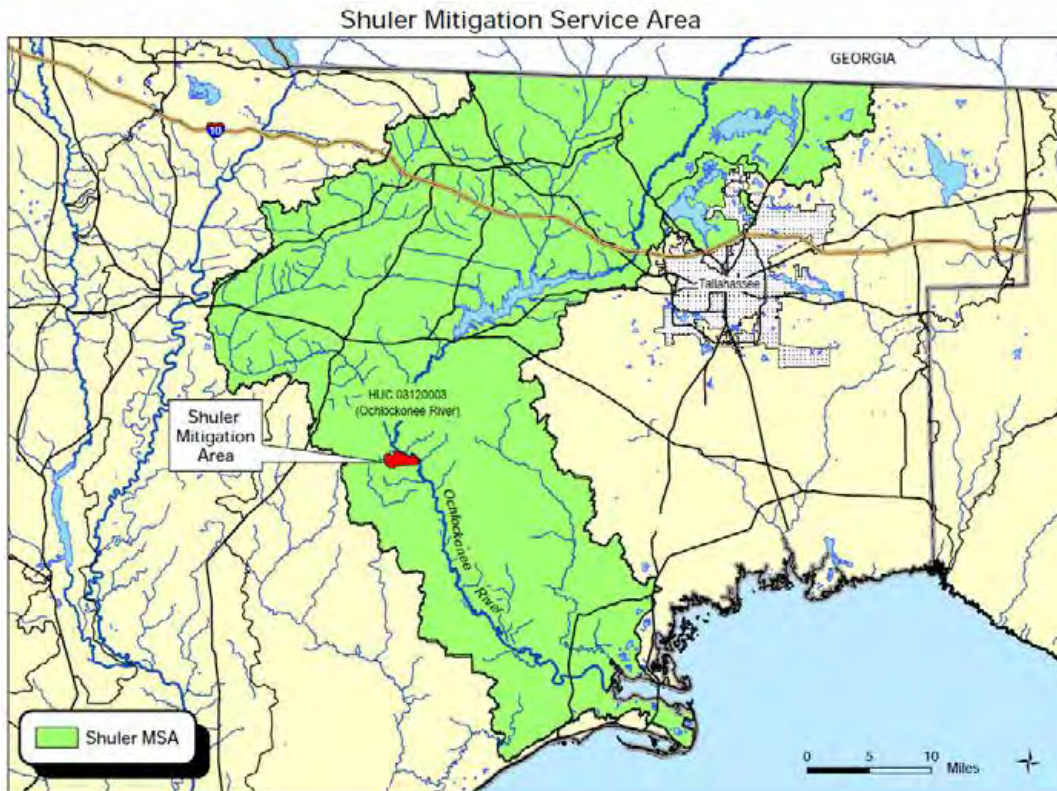
- 8.12 (Potential)
- 8.12 (Released)
- 0.00 (Debited)
- 8.12 (Balance)

Palustrine Forested

- 30.40 (Potential)
- 28.04 (Released)
- 0.95 (Debited)
- 27.09 (Balance)

No private bank options
available in this area.

Shuler ILF Mitigation Area



Total Potential Credits =
50.30

Palustrine Forested

- 33.95 (Potential)
- 33.95 (Released)
- 6.05 (Debited)
- 27.90 (Balance)

No private mitigation bank
options available in this
area.