

TREASURE ROAD MITIGATION SITE

2018 Final Monitoring Report

USACE Permit No.: SAJ-2012-02348 (SP-AWP), issued 3/11/2013

Permittee: Florida Department of Transportation, District 3
Attn. Erica Brookman
PO Box 607
Chipley, FL 32428

Responsible Party for Monitoring: Northwest Florida Water Management District
81 Water Management Drive
Havana, FL 32333

Date of Inspection: 11/5/2018

Summary:

The purpose of this project (Treasure Road Mitigation Site) is to provide offsetting mitigation for 1.74 acres of wetland impacts caused by FDOT roadwork on SR 30A from Cape San Blas Road/SR 30E north to US 98. Mitigation was implemented at St. Joseph Bay State Buffer Preserve (FDEP, Office of Coastal and Aquatic Managed Areas) via hydrologic enhancement of forested palustrine wetlands. Hydrologic enhancement consisted of installation of six low-water-crossings and associated ditch plugs at Treasure Road.

Treasure Road (29° 42' 51" / 85° 17' 42"), a raised gravel road used for management access, intersects SR 30A approximately 4.5 miles south of US 98. The turnoff to the east from SR 30A onto Treasure Road is approximately 200 feet south of the St. Joseph Bay State Buffer Preserve Visitors Center (located on the western side of SR 30A). This road is gated—access may be arranged by contacting Dylan Shoemaker, Preserve Manager (850-229-1787).

Raised above natural grade with ditches on either side, Treasure Road disrupted the hydrology of adjacent wetlands by interfering with overland sheet flows and altering wetland moisture regimes. Associated ditching also contributed stormwater runoff to St. Joseph Bay. The six low-water-crossings and associated ditch plugs designed to enhance the hydrology of adjacent wetlands were installed in August and early September, 2013.

An annual inspection by NFWMD personnel on 11/5/2018, 26 days after landfall of Hurricane Michael west of the Buffer Preserve, concluded that the structures (low-water-crossings and ditch plugs) suffered no damage from the hurricane, were in excellent condition and functioning as designed. Wind damage associated with Hurricane Michael to the surrounding forested palustrine wetlands (generally hydric pine flatwoods) was minimal; adjacent forested wetlands continue to be in excellent condition managed for ecological integrity according to the St. Joseph Bay State Buffer Preserve management plan. The Buffer Preserve management plan emphasizes prescribed

fire and management of exotic vegetation, and may be viewed at www.dep.state.fl.us/coastal/sites/stjoseph_buffer.

Performance Standards:

- Low-water-crossings installed at appropriate elevations
- Non-failure of associated ditch plugs

Monitoring Requirements:

- Inspection and photo-documentation of low-water-crossings and associated ditch plugs
- Frequency
 - Semi-annual for first three years (Spring and Fall, 2014 – 2016)
 - Annual for a minimum of an additional two years (Fall, 2017 – 2018)
- Annual reports submitted to the USACE for duration of monitoring (semi-annual reports combined into one annual report for submission)

During the most recent site inspection of 11/5/2018, all performance standards were found to be met.

Conclusions:

The 2013 installation of six low-water-crossings and associated ditch plugs at Treasure Road has enhanced the hydrologic regime of the adjacent hydric pine flatwoods and attenuated stormwater runoff to St. Joseph Bay. The low-water-crossings and associated ditch plugs are functioning as designed; adjacent hydric pine flatwoods are of high-quality, and are being managed for ecological integrity per the St. Joseph Bay State Buffer Preserve management plan. The 2018 monitoring event concludes five years of monitoring as required by permit conditions. The NFWFMD will request that the USACE release the Treasure Road Mitigation Site from further monitoring and reporting requirements. The mitigation area will be maintained in perpetuity.

Low-Water-Crossings Photos (11/5/2018):



LWC - #1 (11/5/2018)



LWC - #2 (11/5/2018)



LWC - #3 (11/5/2018)



LWC - #4 (11/5/2018)



LWC - #5 (11/5/2018)



LWC - #6 (11/5/2018)

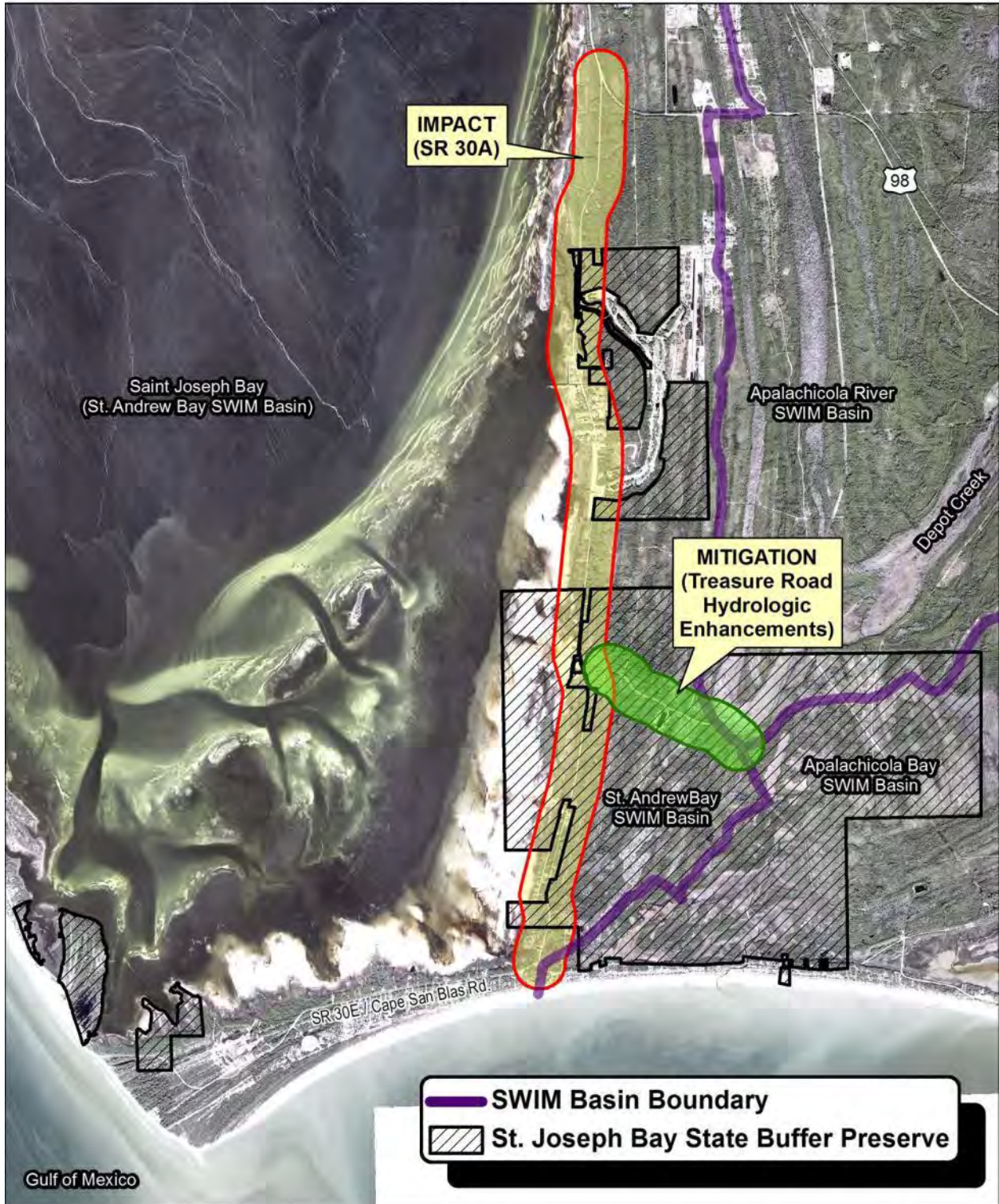


Typical Ditch Plug with Adjacent Hydric Pine Flatwoods in Background (11/5/2018)



Typical Ditch Plug with Adjacent Hydric Pine Flatwoods in Background (11/5/2018)

SR 30A from SR 30E/Cape San Blas Road north to US 98



2010 DOQ



