

# Pine Ridge Equestrian - Econfina Creek WMA



[www.nfwwater.com](http://www.nfwwater.com)

**Pine Ridge Equestrian Campsite** offers eight campsites with picnic tables, fire rings, pedestal grills, space for your horses and trailers and a portable toilet. This location also offers a day use area with parking outside the campsite areas and a picnic pavilion. The day use area is available from sunrise to sunset. For a free reservation please visit our [reservation site](#). Alcohol prohibited.

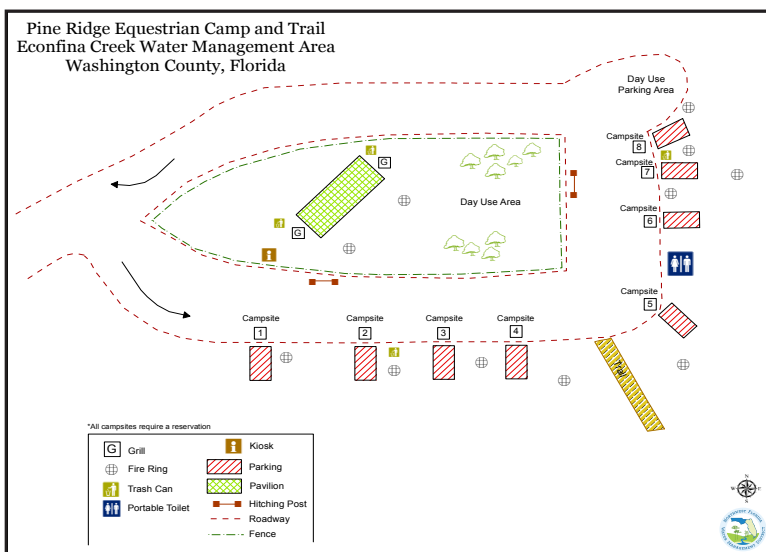
**Address:** 1526 Greenhead Road  
Chipley, FL 32425

**The Pine Ridge Equestrian Trail** was established by the District, volunteers of the Southern Trail Riders Association, and other local saddle clubs in order to designate around 45 miles of trails in the Econfina Creek Water Management Area. Visitors can park at the Pine Ridge Campground (off Greenhead Road) and ride along the Rolling Pines Connector, across State Road 20 to the [Wolf Pond Equestrian Trail](#). Pine Ridge has approximately 15 miles of horse trails. Visitors should always bring enough water to meet their horses needs.

Please keep horses on the trails and out of the lakes and streams and do not disturb vegetation on slopes, lake shores, and stream banks.

Remember to wear bright orange outer garments when riding the trails during hunting season.

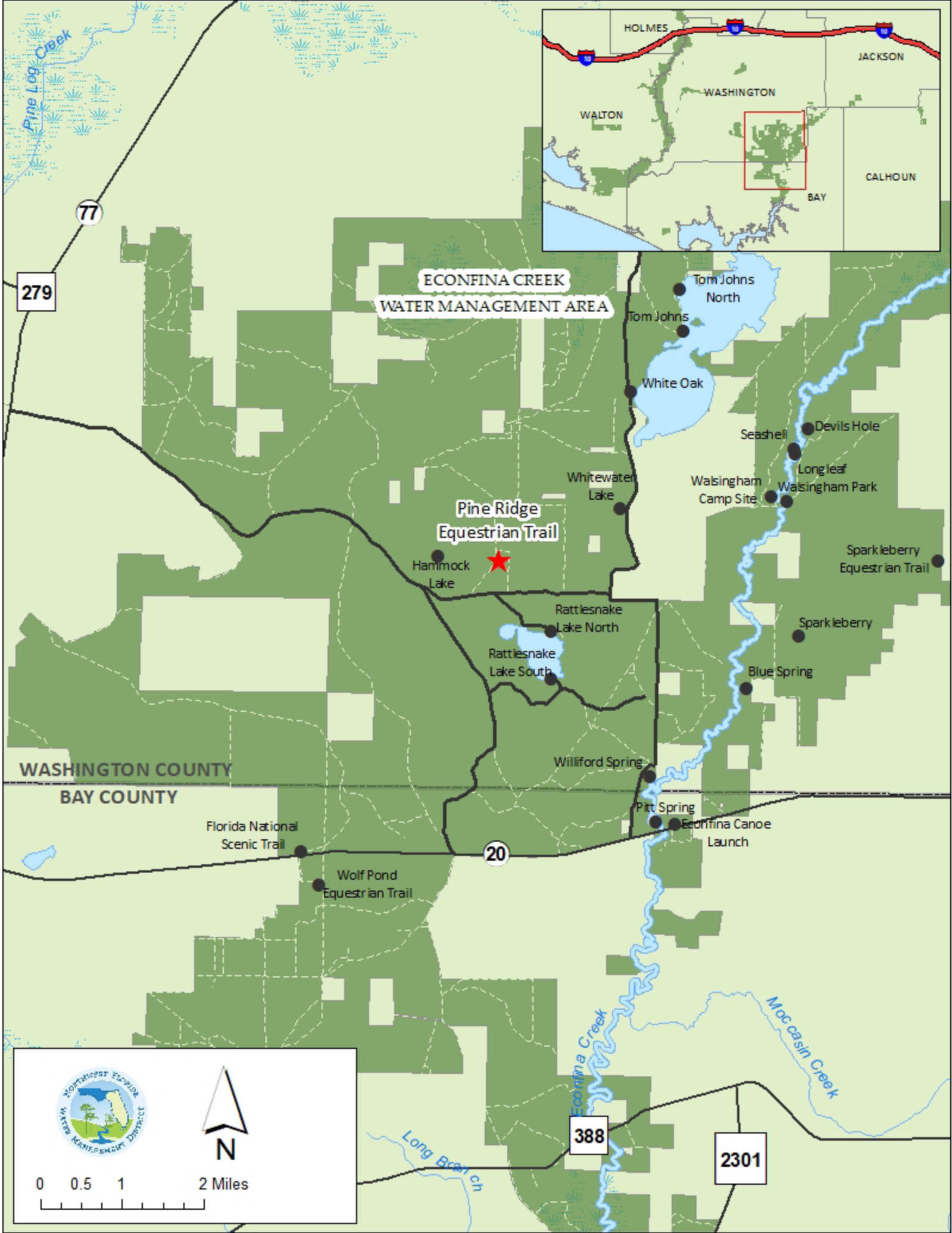
[www.nfwwater.com](http://www.nfwwater.com)



**Top right: Pine Ridge Equestrian Campsite and picnic pavilion**

**Center: Pine Ridge Equestrian Campsite**

**Bottom right: Pine Ridge Equestrian Campsite Diagram**



279

77

ECONFINA CREEK  
WATER MANAGEMENT AREA

Pine Ridge  
Equestrian Trail

WASHINGTON COUNTY  
BAY COUNTY

Florida National  
Scenic Trail

Wolf Pond  
Equestrian Trail

20

Williford Spring

Pitt Spring

Econfina Canoe  
Launch

388

2301



0 0.5 1 2 Miles