

# Webb Landing Recreation Area - Escambia River WMA



[www.nfwwater.com](http://www.nfwwater.com)

**Webb Landing** is located approximately 30 miles north of Pensacola and offers three campsites that can hold up to 8 people and two vehicles per campsite. This location offers picnic tables, pedestal grills, fire rings, a portable toilet and a boat ramp. This location also offers a day use area from sunrise to sunset. For a free reservation please visit our [reservation site](#). Alcohol prohibited.

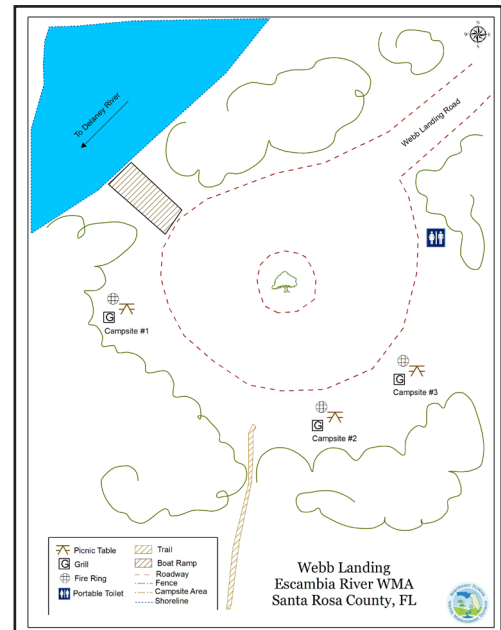
**Address:** 8062 Webb Landing Road  
Pace, FL 32571

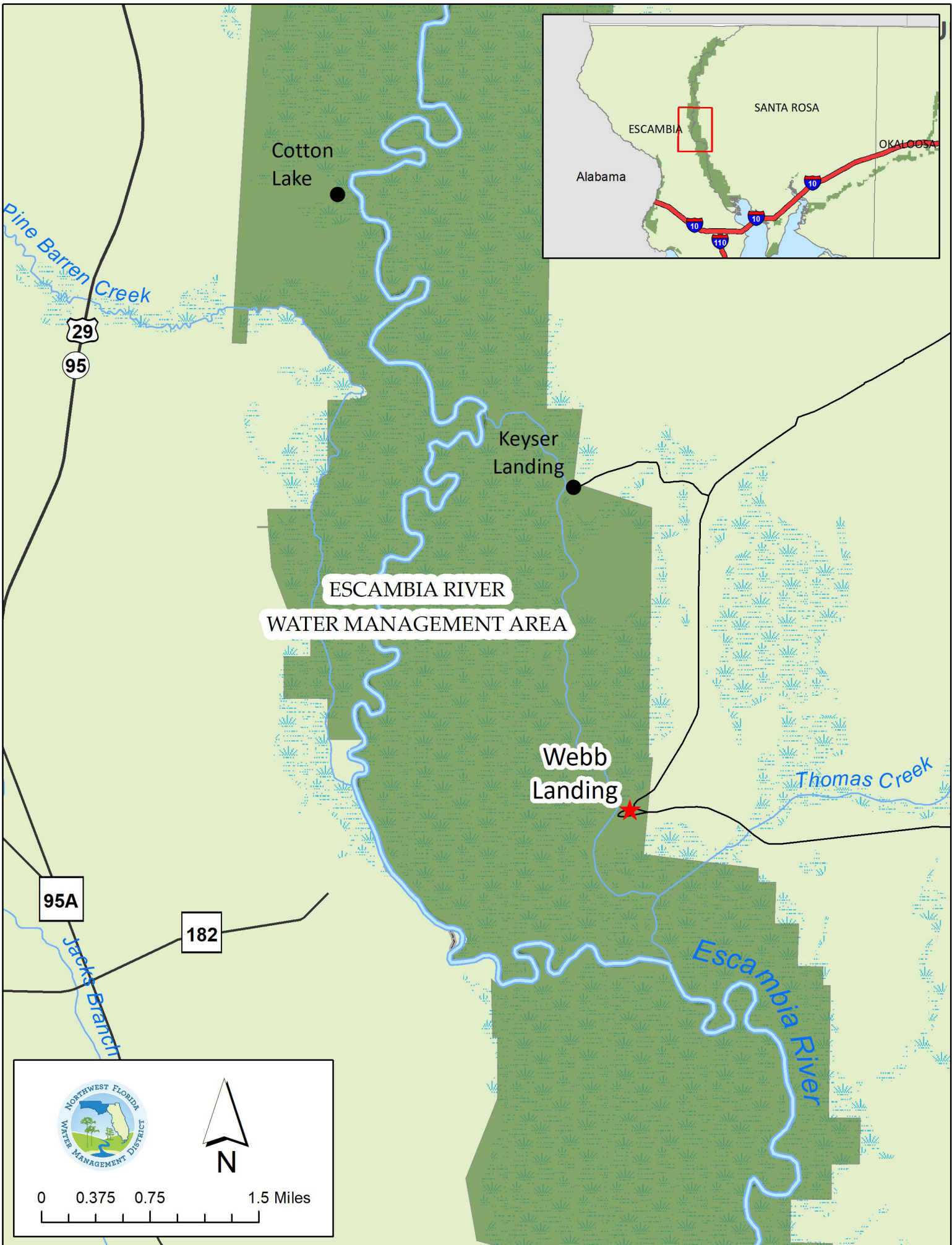


[www.nfwwater.com](http://www.nfwwater.com)



**Above: Webb Landing Boat Ramp**  
**Top right: Webb Landing Campsite 1**  
**Center: Webb Landing Campsite 3**  
**Bottom right: Webb Landing Campsite Diagram**





**ESCAMBIA RIVER  
WATER MANAGEMENT AREA**

**Webb  
Landing**

**Cotton  
Lake**

**Keyser  
Landing**

**95A**

**182**

**29**

**95**



0 0.375 0.75 1.5 Miles