

# Florida River Island - Apalachicola River WMA



[www.nfwwater.com](http://www.nfwwater.com)

**Florida River Island** is a popular campsite that offers 10 campsites that can accommodate up to 8 people and two vehicles per campsite. Sites 1 through 6 are for tent camping only. Sites 7 through 10 will accommodate RVs, campers or vans, but does not have electricity, water or dumping stations. This location offers two picnic pavilions, picnic tables, pedestal grills, fire rings, and a composting toilet. This site also offers a day use area and boat ramp that is open from sunrise to sunset. For a free reservation please visit our [reservation site](#).

**Address:** 4750 SW Forest Road 188  
Bristol, FL 32321



[www.nfwwater.com](http://www.nfwwater.com)

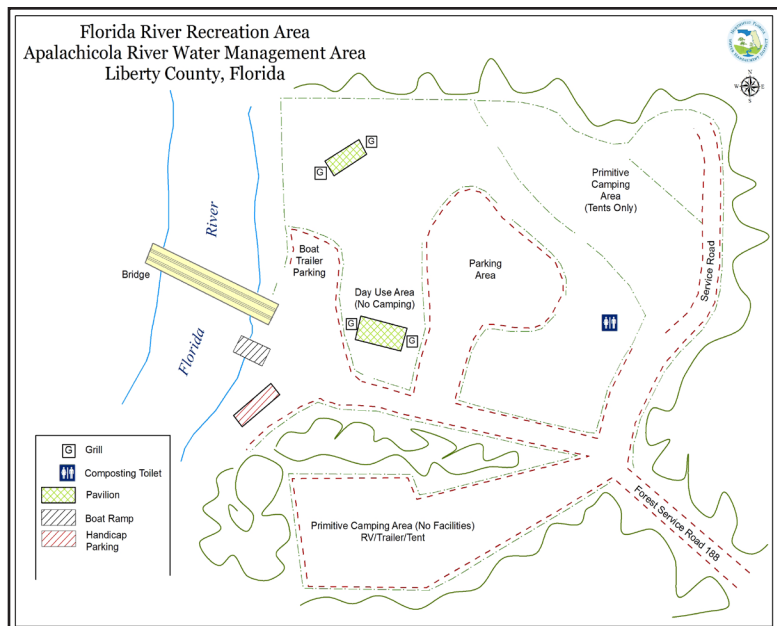


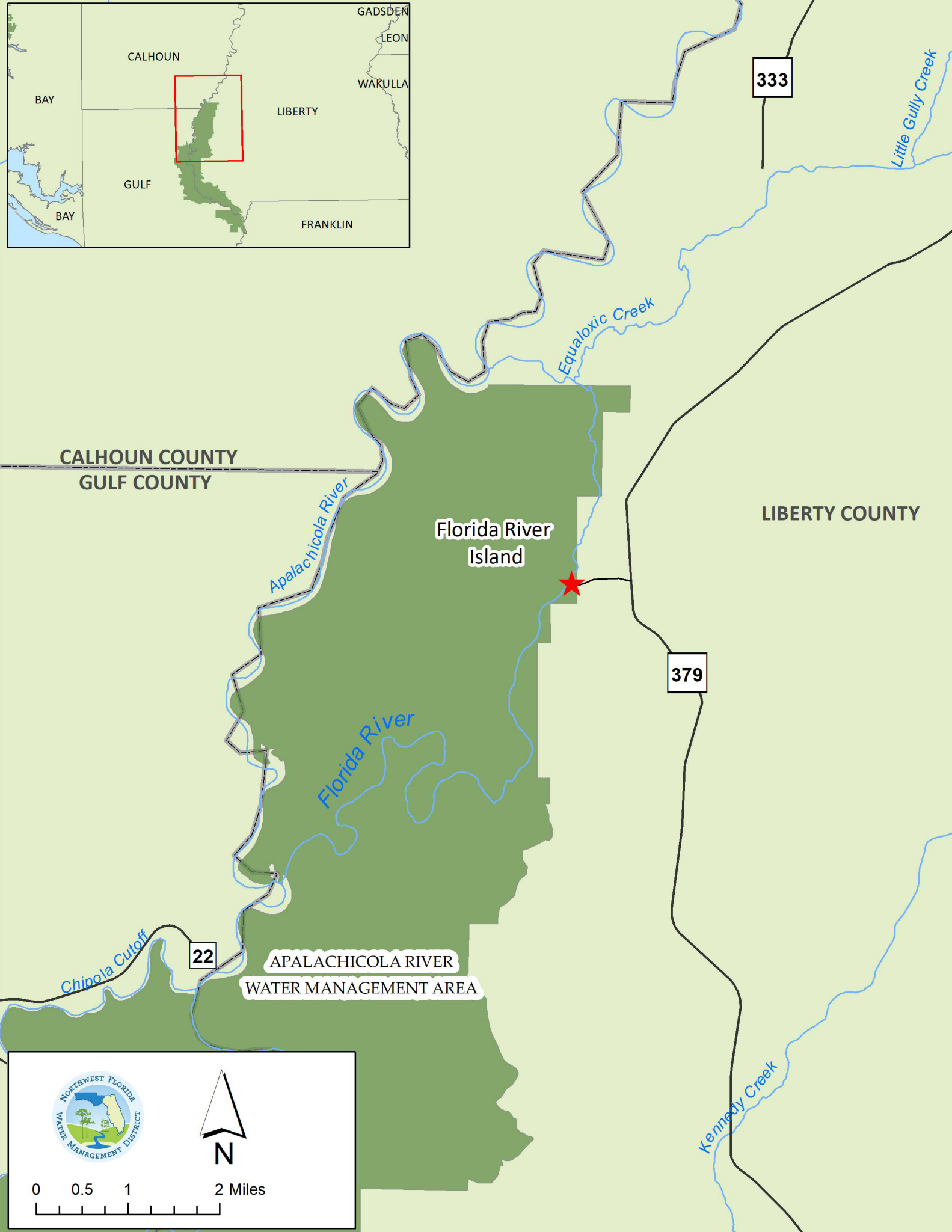
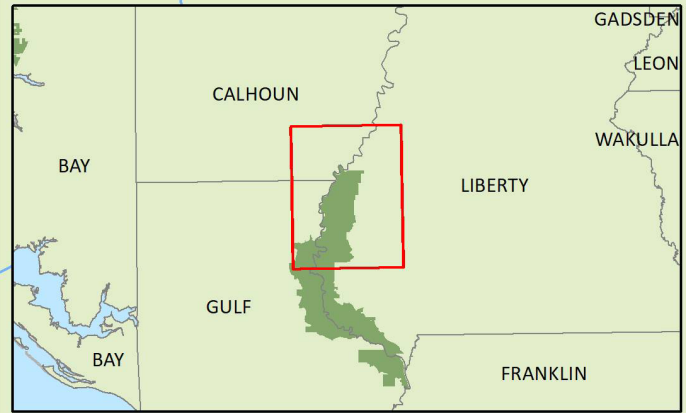
**Above:** Florida River Island Boat Ramp

**Top right:** Florida River Island Campsites 1 through 5 and Picnic Pavilions

**Center:** Florida River Island Campsites 6 through 10

**Bottom right:** Florida River Island Campsite Diagram





This block contains the Northwest Florida Water Management District logo, which features a circular emblem with a landscape scene and the text 'NORTHWEST FLORIDA WATER MANAGEMENT DISTRICT'. Below the logo is a north arrow pointing upwards, labeled with 'N'. At the bottom is a scale bar showing distances of 0, 0.5, 1, and 2 miles.