

# Boynton Landing - Choctawhatchee River WMA



[www.nfwwater.com](http://www.nfwwater.com)

**Boynton Landing** campsite can accommodate campers with tents, vans, and pickup mounted campers and can hold up to 8 people and two vehicles. This location offers a picnic table, pedestal grill, fire ring, and a portable toilet. This location also offers a boat ramp that is adjacent to the campsite. For a free reservation please visit our [reservation site](#).

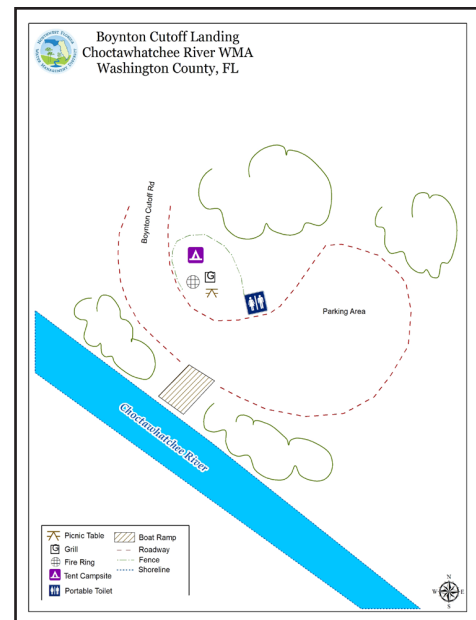
**Address:** 5183 Boynton Cutoff Road  
Vernon, FL 32462

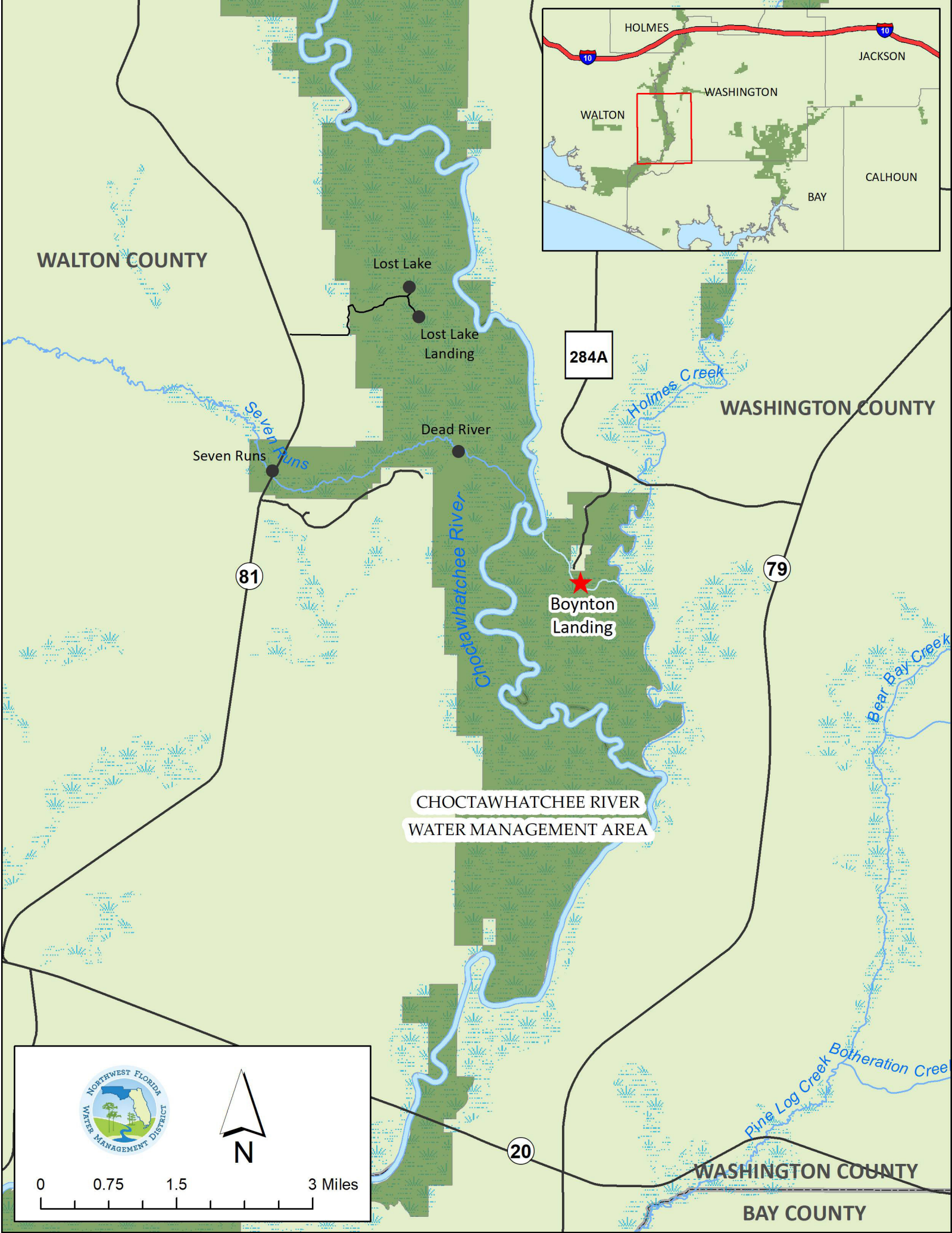


[www.nfwwater.com](http://www.nfwwater.com)



**Above: Boynton Landing Boat Ramp**  
**Top right: Boynton Landing Campsite**  
**Center: Boynton Landing Campsite**  
**Bottom right: Boynton Landing Campsite Diagram**





WALTON COUNTY

Lost Lake

Lost Lake  
Landing

Dead River

Seven Runs

81

284A

Holmes Creek

WASHINGTON COUNTY

79

Boynton  
Landing

CHOCTAWHATCHEE RIVER  
WATER MANAGEMENT AREA

20

WASHINGTON COUNTY

BAY COUNTY

HOLMES

JACKSON

WASHINGTON

WALTON

BAY

CALHOUN



0 0.75 1.5 3 Miles