

Lost Lake - Choctawhatchee River WMA



www.nfwwater.com

Lost Lake is a popular campsite that can hold up to 16 people and four vehicles and is large enough to accommodate an RV, travel trailer, tents and other camping vehicles. The campsite does not have electricity, water or waste disposal hookups. This location offers a picnic pavilion, picnic tables, pedestal grill, fire ring, and a portable toilet. This site also offers a day use area and boat ramp that is located approximately 1/4 mile south of the campsite and is open from sunrise to sunset. For a free reservation please visit our [reservation site](#).

Address: 3541 Meadows Lane
Vernon, FL 32462

www.nfwwater.com

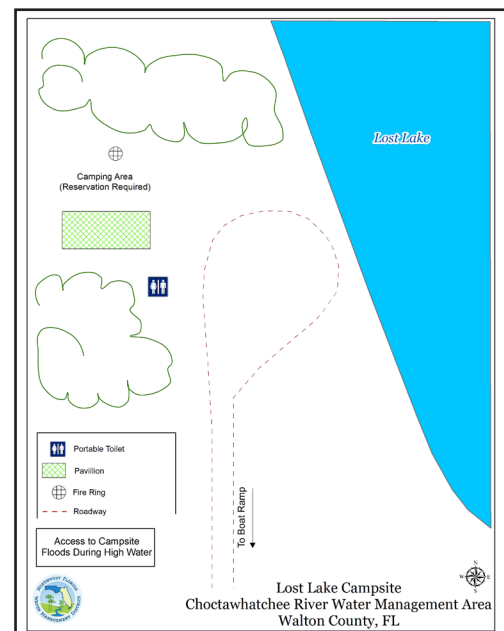


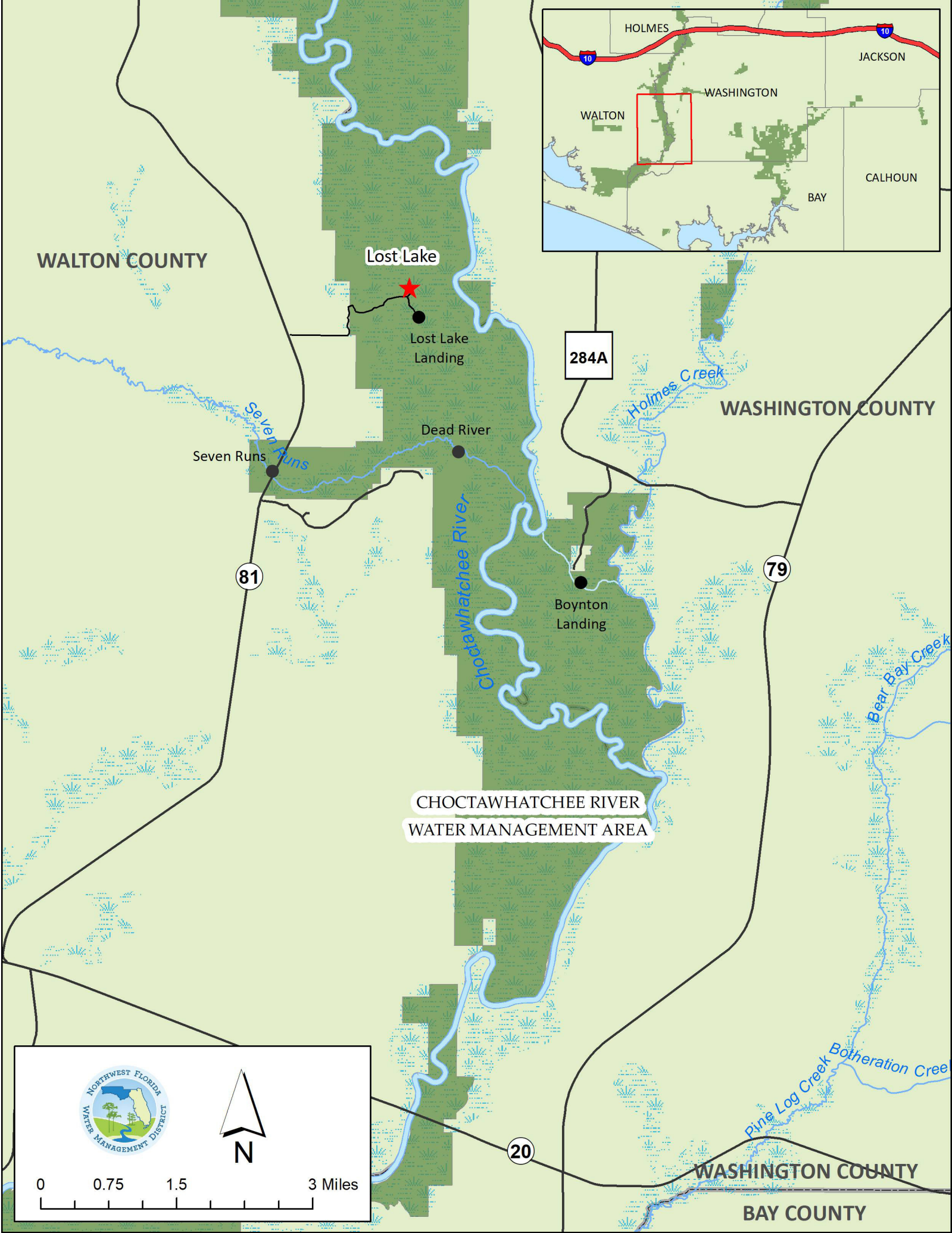
Above: Lost Lake Boat Ramp

Top right: Lost Lake Campsite and Picnic Pavilion

Center: Lost Lake Day Use Area Picnic Pavilion

Bottom right: Lost Lake Campsite Diagram





WALTON COUNTY

Lost Lake

Lost Lake
Landing

Seven Runs

81

Dead River

CHOCTAWHATCHEE RIVER
WATER MANAGEMENT AREA

284A

Boynton
Landing

WASHINGTON COUNTY

79

20

WASHINGTON COUNTY

BAY COUNTY

HOLMES JACKSON

WALTON WASHINGTON BAY CALHOUN



0 0.75 1.5 3 Miles