

NORTHWEST FLORIDA WATER MANAGEMENT DISTRICT
REQUEST FOR QUOTES
JULY 2020
CONTRACTUAL SERVICES FOR RECOVERY EFFORTS AND DEBRIS REDUCTION CLEARANCE
SERVICES
FROM PRE-QUALIFIED VENDORS AWARDED CONTRACTS VIA REQUEST FOR PROPOSAL 20-001

OVERVIEW

This Request for Quotes (RFQ) is for recovery efforts and debris reduction clearance services (debris services) in accordance with NFWFMD Request for Proposals 20-001 and Agreements 20-059 (Promise Habitat Services); 20-060 (Coastline Solutions, Inc.); 20-061 (Gaston Tree Debris Recycling, LLC); 20-062 (KDF Enterprises, LLC); 20-063 (Custom Tree Care, Inc.); 20-064 (CrowderGulf); 20-065 (Aftermath Disaster Recovery); 20-066 (Southern Disaster Recovery, LLC); 20-067 (North Florida Contracting, Inc.); 20-068 (Collins Land Services, Inc.); 20-069 (Gordon and Porter Services, LLC); 20-070 (Chipola Forestry Services, LLC); 20-071 (Brizo Construction, LLC); 20-072 (Graham Co. Land Company); 20-073 (Break -N- Ground); 20-074 (Main Street Construction Services, LLC); 20-075 (State Tree Service); 20-076 (DRC Emergency Services); 20-077 (CERES Environmental); 20-078 (Wildlands Service, Inc.); 20-079 (Mohawk Valley Materials, Inc.); 20-080 (RFI - Robotics Fabrication, Inc.); 20-081 (F4 Tech); 20-082 (Merit First, LLC). These pre-qualified contractors are the only entities permitted to submit a quote in response to this RFQ.

The specified work involves debris services on six distinct sites with 18 work units totaling 816.1 acres to be completed by December 31, 2020. These work units are in Bay, Calhoun and Washington Counties. Work will be awarded by Task Order (TO). Draft copies are included. If awarded to more than one contractor, the TO will be adjusted accordingly.

The District is anticipating awarding one unit per contractor. However, the work will be awarded in the manner that best serves the District to ensure completion of the debris services. Pricing will be the primary factor that determines how the work will be awarded but is not the sole factor. Contractors should quote each unit with the understanding that an individual unit may be the only unit awarded to a contractor. At its sole discretion, the District may elect to not award all units.

Quoted prices shall not exceed the Ceiling Rates provided in response to RFP 20-001 and contained within the Contractor's Agreement by reference.

SUBMITTING QUOTES

- Please send quote via email **by 5:00 pm ET on August 14, 2020.**
- Companies are not required to quote all work units.
- Companies not submitting a quote for the work units must submit a “No Quote” response.
- Submit Quotes (Page 3 below), to agency.clerk@nwfwater.com

QUOTE SHEET

NWFWMMD JULY 2020 RECOVERY EFFORTS AND DEBRIS REDUCTION CLEARANCE SERVICES

Company:			
Quote Prepared by:			
Date:			
Unit Name	Contract Acres	per acre rate	unit total
Altha Unit 1	92.2		
Altha Unit 2	1.7		
Altha Unit 3	12.9		
Altha Unit 4: Hazard Tree Removal*	12.5	*lump sum bid	
Blue Spring Cleanup	4.8		
Blue Spring Hazard Tree Removal*	3.3	*lump sum bid	
Williford Spring Cleanup	4.1		
Strickland Road Cleanup	26.3		
Pitt Spring Cleanup	5.1		
Pitt Spring Hazard Tree Removal*	0.6	*lump sum bid	
Hobbs Unit 1	127.0		
Hobbs Unit 2	147.5		
Hobbs Unit 3	73.1		
Hobbs Unit 4	119.1		
Hobbs Unit 5	61.1		
Hobbs Unit 6	32.3		
Hobbs Unit 7	52.5		
Hobbs Unit 8	40.0		
Authorized Signature			

Please submit this sheet to: Agency.Clerk@nwfwater.com 5:00 pm ET on August 14, 2020

NORTHWEST FLORIDA WATER MANAGEMENT DISTRICT
REQUEST FOR QUOTES
JULY 2020
CONTRACTUAL SERVICES FOR RECOVERY EFFORTS AND DEBRIS REDUCTION CLEARANCE
SERVICES
FROM PRE-QUALIFIED VENDORS AWARDED CONTRACTS VIA REQUEST FOR PROPOSAL 20-001
TASK ORDERS
Exhibit A – Scope of Services

General Description and Location

These Task Orders (TO) are for debris services within the Chipola River and Econfinia Creek Water Management Areas in Bay, Calhoun and Washington Counties. A total of 816.1 acres have been identified and work units delineated on the attached Exhibit Maps for assignment under this TO. The unit boundaries are identified by public roads, management roads, old fire lines and natural drainage systems. All debris units will be reviewed by the CONTRACTOR and agreed upon prior to the operations with assistance from the DISTRICT.

The objectives for these units are to reduce debris, reduce fuel accumulation, hardwood growth and safety hazards without damaging residual trees and facilities.

Contact Persons

The District's primary field contacts for these units will be coordinated and assigned by Tyler Macmillan who can be reached at 850-539-5999 (office switchboard), 850-539-2633 (office direct), 850-556-5799 (cell/text), or via email at Tyler.Macmillan@nwfwater.com.

The District's administrative contact for all units is Leonard Zeiler who can be reached at 850-539-5999 (office switchboard), 850-539-2623 (office direct), 850-443-0590 (cell/text), or via email at Lennie.Zeiler@nwfwater.com.

Hunting/Public Use Information

These units are within the Chipola River and Econfinia Creek Wildlife Management Areas. Hunting seasons, quota hunt dates, and other information and regulations can be found online at:

<http://myfwc.com/hunting/wma-brochures>

<https://myfwc.com/hunting/wma-brochures/nw/econfinia-creek/>

<https://myfwc.com/hunting/wma-brochures/nw/chipola-river/>

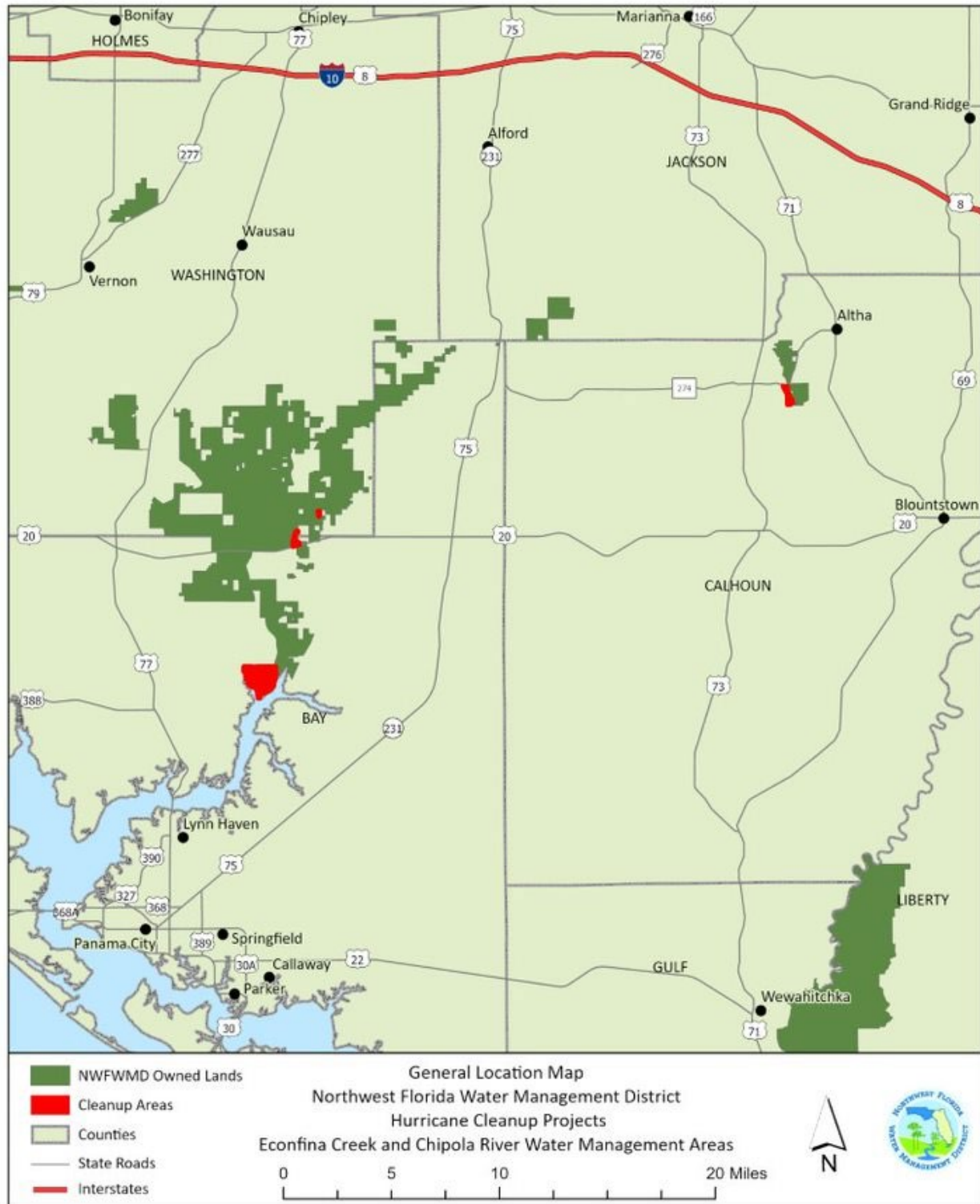
All lands owned by the NFWMD are open to the public 365 days per year for various recreational activities. Contractors must be aware of public users and plan and execute their work

accordingly. Sites with public recreation amenities may be closed to protect public safety. Placement of signage before and during the work is allowed and encouraged.

Work Completed and Billing

The District anticipates monthly billing with measured stages of completion. For debris clearing and reduction units, completion will be measured in acreage where debris is gathered and ready for processing - this is considered 50 percent complete. Acreage where debris has been reduced/removed after gathering are considered 100 percent complete. For hazard tree areas, a percentage of completion will be determined collectively by the District and the contractor, based on the number of trees and stumps and type of work (trim, remove, grind) associated with those trees and stumps. The District will retain 10 percent from each invoice as retainage until the entire job is completed. After the Contractor has notified the District that a portion of a unit is complete, District staff will inspect the unit for contract compliance. Only those acres within a unit determined to meet debris clearance and reduction goals as specified for each unit will be authorized for billing and payment. District staff will map the area(s), quantify the acres cleared and debris acres reduced, the contractor will base invoices and deduct retainage.

RFP 20-001 Request For Quotes July 2020 – Exhibit 1



CHIPOLA RIVER WATER MANAGEMENT AREA - ALTHA TRACT

SCOPE OF WORK – Altha

Background

Hurricane Michael severely impacted District-owned lands in Bay, Calhoun, Gulf, Holmes, Jackson, Liberty and Washington Counties. In Calhoun County, the Altha tract on the Chipola River Water Management Area has 119.3 acres that have been identified for hurricane vegetative debris management services. The 119.36-acre area has been divided into four discrete units (Work Zones), as illustrated on the attached Exhibit Map 2a. Units 1 and 2 contain 93.9 acres, comprised of a 23-year-old longleaf pine stand on the west side (Unit 1) and a 23-year-old slash and loblolly pine stand on the east side (Unit 2). Unit 3 is 12.9 acres, and the entire stand was destroyed by the hurricane and needs to be cleared of all standing and downed trees and debris. Unit 4 is 12.5 acres and includes areas along the Look-N-Tremble Road where individual hazard trees have been identified and marked for removal (Exhibit Map 2b). There is a sensitive slope forest area on the east side of Unit 1 that contains two listed species of magnolia (*Magnolia ashei* and *Magnolia pyramidata*); the Contractor shall not enter this area.

Unit Treatments

County	Unit #	Acres	Unit Treatment Activity
Calhoun	1	92.2	While protecting all “leave” trees not designated for removal, Contractor shall remove all downed trees and debris four (4) inches in diameter or greater. Remove all standing dead trees four (4) inches and greater diameter at breast height (DBH), including all standing stems broken off above the base. Remove standing live trees four (4) inches and greater DBH that are leaning more than 25 degrees from vertical. Utilize historic cleared logging decks for operations that require cleared areas (pile burning, chipping, ACI operation, equipment staging, etc.). All activities requiring cleared areas outside of existing logging decks must be approved in advance by the District’s Site Manager and the location and approval shall be documented in writing.
Calhoun	2	1.7	Remove all downed trees and debris four (4) inches in diameter or greater. Remove all standing dead trees four (4) inches and greater DBH including all standing stems broken off above the base. Remove standing live trees four (4) inches and greater DBH leaning more than 25 degree from vertical.

County	Unit #	Acres	Unit Treatment Activity
Calhoun	3	12.9	Remove all downed and standing live trees, dead trees, and all debris four (4) inches in diameter or greater. Along the northeast edge of this unit near the roadway and portable toilet are approximately 16 live trees that have been marked with red paint in a circle around the trunk. These trees shall not be removed or damaged during the Work in this unit.
Calhoun	4	12.5	All marked hazard trees (69 trees) shall be cut and removed with the stumps left in place. Marked hazard trees within this unit are standing, leaning, lodged, or laying on the ground. All marked Hazard Tree Trimming (17 trees) shall include removal of all dead branches from living marked trees. One stump was also marked for removal in this area. See Exhibit Map 3 and Table 1 for approximate location of the trees to be removed. Much of this unit is floodplain area between Look-and-Tremble Road and the Chipola River and contains soils that are highly susceptible to rutting and erosion. Soil disturbance in this area is expressly prohibited.

Methods

The Contractor will select the most efficient method or combination of methods for removing the trees and vegetative debris, including such techniques as cut and haul to an approved disposal or reuse facility; onsite air curtain incineration; pile and burn in areas that will not affect residual trees, onsite chipping with removal or onsite distribution of chips, etc. The special conditions below must be taken into consideration for any selected vegetative debris management method. ****All trees and debris located within identified wetlands will be removed via low impact methods to minimize impacts to wetlands. In addition, all trees and debris will be moved to uplands prior to processing.****

Special Conditions

1. The District's Land Management Plan for the East Region will guide all contractor activities with special attention given to listed (threatened and endangered) species. This plan can be viewed at: <https://www.nfwfwater.com/Lands/Land-Management>.
2. Within Units 1, 2 and 3, with the exception of debris smaller than 4" (four inches) in diameter, all specified vegetative debris in the project area shall be processed, whether reduced onsite through burning, chipping, or other technique, or removed and hauled offsite for disposal or use.

3. The Contractor must take care not to damage fences, overhead and underground utilities, gates, and any other items of value owned by the District or neighboring property owners. Contractor will be held responsible for all damages.
4. The Contractor shall not bury onsite any debris, garbage, trash, or other materials resulting from or associated with the work. Ash from burning operations may remain onsite, provided that it is not in piles or disposed of in a manner that would prevent vegetation from growing.
5. Work will occur only during daylight hours, unless otherwise approved by the District.
6. The Contractor must exercise care to prevent damage to all residual live trees designated to remain within the project areas. To prevent soil compaction and damage to residual tree root systems, heavy equipment shall not enter the dripline of the residual trees except when necessary to remove targeted trees and debris. Special care shall be given to prevent any damage to listed species *Magnolia ashei* and *Magnolia pyramidata*. Standing trees not intended for removal will not be used in any manner to facilitate the Contractor's operations.
7. The listed species *Magnolia ashei* and *Magnolia pyramidata* will be flagged by the District and the contractor will be shown how to identify the listed species so that unflagged *Magnolia ashei* and *Magnolia pyramidata* can be identified and avoided. The lack of a flag does not affect the contractor's responsibility to protect listed species.
8. Stumps from vertical dead and leaning trees shall be cut as close to the ground as possible and shall not be higher than six inches (6") above the ground except where otherwise authorized by the District. Felled trees with root balls attached shall be cut as close to the root ball as possible.
9. Debris remaining onsite shall not be piled nor left gathered around or near the base of remaining live trees.
10. All "lodged" trees shall be freed and removed.
11. Skidding trees down existing dirt roads and fire lines is encouraged. However, the creation of barren areas or "skid trails" through repeated skidding across the same ground is discouraged.
12. The District retains the right to close down operations in inclement weather if soil disturbance in the project area is deemed by the District to be too severe.
13. There are sections of the project area where slopes are present, and the contractor shall not create areas where erosion could start and become a problem. The contractor shall employ measures that prevent and control erosion both during and after the conclusion of

contractor's work. Protective measures such as water bars, hay bale protection, erosion control materials and/or grass seeding with non-invasive grass species shall be employed where needed to prevent and/or mitigate erosion issues.

- 14.** The Contractor's employees and subcontractors shall ensure that gates are securely closed and locked when departing the site. The District may impose a \$50 penalty per day which shall be paid by the Contractor for each occurrence of gates left unlocked or open, or for unauthorized change of locks or access.
- 15.** The Contractor shall adhere to and implement all applicable federal, state, and local environmental laws and regulations as well as applicable best management practices (BMPs) for silvicultural operations as outlined in the latest version of the Florida Silviculture Best Management Practices Manual. The Contractor is responsible for securing any forestry authorizations that may be required under Chapter 40A-44, Florida Administrative Code, and/or any other local, state, or federal permit or authorization that may be required to conduct the vegetation and debris removal operations and shall remain in full compliance with all governing regulations during the course of the Work. All burning operations shall be managed by a burn manager certified by the Florida Forest Service, shall be authorized as certified burns by the Florida Forest Service and shall be performed in accordance with Chapter 590, Florida Statutes and Chapters 62-256 and 5I-2, FAC.
- 16.** The Contractors shall accept roads in their present condition and accept responsibility and expenses for any improvements in roads necessary to cut, haul, manage, and/or remove the designated vegetation. During operations the Contractors shall maintain all roads in a usable condition, suitable for the vehicular traffic to which the road is normally subjected. The Contractors are responsible for maintaining the roads and making them serviceable prior to use, as approved by the District. Ruts on roads will be back bladed by the Contractor upon completion of the work and when requested by the District during the work. The District retains the right to close down the operations in inclement weather if damage to roads or the project area is deemed by the District as becoming too severe.
- 17.** Maintenance of equipment may be conducted on-site only if all product containers, fluids and waste, including used oil, hydraulic oil and all other disposable products, are properly captured and contained, and removed from the site for proper disposal. Petroleum-based fluid spills smaller than 5 (five) gallons that occur from equipment must be reported to the District, treated with appropriate absorbent and/or other neutralizing agent, and followed by removal and proper disposal of affected soils. Petroleum-based fluid spills 5 (five) gallons or greater in a concentrated spot shall also be reported to the District and cleaned up properly.

Spills that are 25 gallons or greater must be reported to the Florida Department of Environmental Protection (“DEP”) with a field inspection made by DEP, and the Contractor must handle such spills according to DEP instructions. ***Spills must not be buried with soil and/or sand and left untreated.*** Equipment that constantly leaks fluid and/or causes other problems on site shall be shut down by a District representative and the contractor may be required to remove the problem equipment from the site.

18. The Contractor shall be responsible for seeing that the work area shall remain free from any litter such as oil cans, drums, paper, foam products and other refuse.
19. To minimize the possibility of transporting and spreading exotic plant species, equipment must be cleaned of all dirt and plant material prior to moving onto District land.
20. If warranted by the specific operations employed by the contractor, the Contractor shall provide and maintain a minimum of two (2) signs stating: “Trucks Entering and Leaving Highway” (or similar acceptable language) and place the signs in appropriate locations.
21. Gopher tortoises are a protected species and may be present within the project areas and in other areas throughout the property. Work crews must prevent impacts to tortoises and their burrows by avoiding burrow aprons and tunnels and watching out for individual tortoises during all operations. Gopher tortoises shall not be injured, captured, moved or removed from District project areas.
22. Project progress shall be measured on a per-acre basis for units 1, 2, and 3, and invoices shall be approved only for work completed and measured by District staff using a GPS unit to determine and delineate acreage and proportion of work within the acreage completed in accordance with the specifications contained herein. Project progress shall be measured on percent completed basis for the lump sum work effort in Unit 4 (Hazard Tree Removal Area). The Per-Acre and Lump Sum costs are inclusive of all costs affiliated with completing the work, including but not limited to employee pay, benefit costs, insurance, bonds, fuel, vehicles, transportation, mobilization and demobilization, equipment, communication equipment, GPS units, cameras, PPE, power tools, hand tools, debris handling, management, reduction, and disposal, and any other costs necessary for the contractor to meet project specifications. Any needed fireline preparation and rehabilitation and all planning, permitting, administrative, contract management, and invoicing costs are included.

TABLE – HAZARD TREES AND STUMPS – ALTHA TRACT

Tree / Stump No.	Tree / Stump Work Required	Tree / Stump Diameter (Approx.)	Approximate Tree / Stump Location (Latitude/Longitude)
1	Hazard Tree Removal	6	30.5317583329212, -85.1650533325381
2	Hazard Tree Removal	14	30.5312633335444, -85.1649933337247
3	Hazard Tree Removal	12	30.533526667264, -85.1654150003642
4	Hazard Tree Removal	13	30.5320883338809, -85.1651050002
5	Hazard Tree Removal	11	30.5317033329971, -85.1650199998977
6	Hazard Tree Removal	9	30.5317416669699, -85.1649733339049
7	Hazard Tree Removal	8	30.5317700000403, -85.1650766663107
8	Hazard Tree Removal	11	30.5320716665902, -85.1650550003792
9	Hazard Tree Removal	10	30.5318566661785, -85.1650700000767
10	Hazard Tree Removal	10	30.5316966666203, -85.1650599998158
11	Hazard Tree Removal	11	30.5316866663996, -85.1650166666902
12	Hazard Tree Removal	8	30.5317616664101, -85.1649933334142
13	Hazard Tree Removal	10	30.5316616674008, -85.165071666305
14	Hazard Tree Removal	10	30.5335250000876, -85.1654166669053
15	Hazard Tree Removal	9	30.5317049998295, -85.1651166665888
16	Hazard Tree Removal	11	30.5333883333149, -85.165416666013
17	Hazard Tree Removal	7	30.5318883337794, -85.1650033339221
18	Hazard Tree Removal	19	30.5312433336276, -85.1650016667038
19	Hazard Tree Removal	8	30.5335577729613, -85.1654338327137
20	Hazard Tree Trimming	17	30.5292166666348, -85.1643583331016
21	Hazard Tree Removal	13	30.5288833335409, -85.1642549996724
22	Hazard Tree Removal	9	30.5290099996082, -85.1645200003464
23	Hazard Tree Removal	12	30.5286933328207, -85.1642616660985
24	Hazard Tree Removal	18	30.5280833331577, -85.1643216672029
25	Hazard Tree Removal	8	30.5289900002946, -85.1642333335272
26	Hazard Tree Removal	16	30.5275049993671, -85.163606666647

Tree / Stump No.	Tree / Stump Work Required	Tree / Stump Diameter (Approx.)	Approximate Tree / Stump Location (Latitude/Longitude)
27	Hazard Tree Removal	6	30.528834999906, -85.1644716665162
28	Hazard Tree Removal	10	30.5291916661075, -85.1642333341017
29	Hazard Tree Removal	9	30.5300950000036, -85.1648400003881
30	Hazard Tree Removal	5	30.5288383333947, -85.1644716663589
31	Hazard Tree Removal	8	30.5288849998741, -85.1641699993127
32	Hazard Tree Removal	21	30.5306899996238, -85.1649516672546
33	Hazard Tree Removal	11	30.5301500000369, -85.164821666477
34	Hazard Tree Removal	19	30.5285183330101, -85.1645883329749
35	Hazard Tree Trimming	13	30.5281583334904, -85.164185000145
36	Hazard Tree Trimming	20	30.5282766666184, -85.1644633333151
37	Hazard Tree Trimming	13	30.5310099994241, -85.1650149996044
38	Hazard Tree Removal	8	30.5289833338653, -85.1644433341584
39	Hazard Tree Removal	9	30.5311783334681, -85.1649849999825
40	Hazard Tree Removal	16	30.5289200002694, -85.1641316665107
41	Hazard Tree Removal	9	30.5286949999563, -85.1642583332432
42	Hazard Tree Trimming	13	30.5282766664162, -85.1642666665785
43	Hazard Tree Removal	9	30.5274550005339, -85.1636033334975
44	Hazard Tree Removal	5	30.5261650003912, -85.1629550003464
45	Hazard Tree Removal	7	30.5253449999988, -85.1622150002807
46	Hazard Tree Trimming	12	30.5274066662518, -85.1635666668337
47	Hazard Tree Removal	8	30.5268199997191, -85.1634566666005
48	Hazard Tree Removal	10	30.5263583326379, -85.1631000000766
49	Hazard Tree Removal	11	30.5252400001259, -85.1620916661187
50	Hazard Tree Removal	9	30.5254566671355, -85.1622716665949
51	Hazard Stump Removal	26	30.5273516667019, -85.1637083333405
52	Hazard Tree Removal	6	30.5263149998266, -85.1630950004714
53	Hazard Tree Trimming	14	30.5270683331623, -85.163513332805

Tree / Stump No.	Tree / Stump Work Required	Tree / Stump Diameter (Approx.)	Approximate Tree / Stump Location (Latitude/Longitude)
54	Hazard Tree Trimming	6	30.5260399997988, -85.1628166675444
55	Hazard Tree Removal	17	30.5263216662853, -85.1632049994883
56	Hazard Tree Removal	14	30.5271683331984, -85.1633683334289
57	Hazard Tree Trimming	15	30.5270800001551, -85.1635216670567
58	Hazard Tree Removal	8	30.5250533334004, -85.1619600000814
59	Hazard Tree Removal	9	30.5257666672827, -85.162483333536
60	Hazard Tree Removal	8	30.5266600003557, -85.16342500028
61	Hazard Tree Removal	17	30.5249633336762, -85.1619116664715
62	Hazard Tree Removal	6	30.5255700003704, -85.1624566662946
63	Hazard Tree Trimming	6	30.5267099998089, -85.1634866669877
64	Hazard Tree Removal	10	30.5266633329462, -85.1632899998818
65	Hazard Tree Removal	9	30.5250466671176, -85.1619300005361
66	Hazard Tree Removal	7	30.5250950007007, -85.1620099992707
67	Hazard Tree Removal	8	30.5250783331787, -85.1619833330703
68	Hazard Tree Trimming	21	30.5270499997836, -85.1633549999219
69	Hazard Tree Trimming	12	30.5270366664235, -85.1633100007793
70	Hazard Tree Removal	8	30.52704333381, -85.1633250006993
71	Hazard Tree Trimming	12	30.527041666423, -85.1633183333067
72	Hazard Tree Removal	9	30.5294900000587, -85.1644899997654
73	Hazard Tree Removal	19	30.5270233331174, -85.1633683333095
74	Hazard Tree Removal	7	30.5294849995267, -85.1644983330328
75	Hazard Tree Removal	8	30.5238633331624, -85.1610600000522
76	Hazard Tree Removal	14	30.5320650002291, -85.1649216666243
77	Hazard Tree Trimming	25	30.5270533333668, -85.163358333479
78	Hazard Tree Removal	14	30.5255200003236, -85.1626950002981
79	Hazard Tree Removal	22	30.5255700003464, -85.1628233336638
80	Hazard Tree Removal	8	30.52704333381, -85.1633250006993

Tree / Stump No.	Tree / Stump Work Required	Tree / Stump Diameter (Approx.)	Approximate Tree / Stump Location (Latitude/Longitude)
81	Hazard Tree Removal	21	30.5240199996912, -85.1611366667985
82	Hazard Tree Trimming	8	30.5239533330686, -85.1611266668873
83	Hazard Tree Removal	17	30.5256166666666, -85.1627116669172
84	Hazard Tree Trimming	15	30.5255599998185, -85.1626766661003
85	Hazard Tree Removal	21	30.523868333419, -85.1610916666306
86	Hazard Tree Trimming	6	30.525903332832, -85.1627533333833
87	Hazard Tree Removal	7	30.5249400000525, -85.1618133334922

HAZARD TREES AND STUMPS TOTALS	TOTAL Number of Marked Trees/Stumps
Hazard Stump Removal	1
Hazard Tree & Stump Removal	0
Hazard Tree Trimming	17
Hazard Tree Removal	69

Exhibit 2a

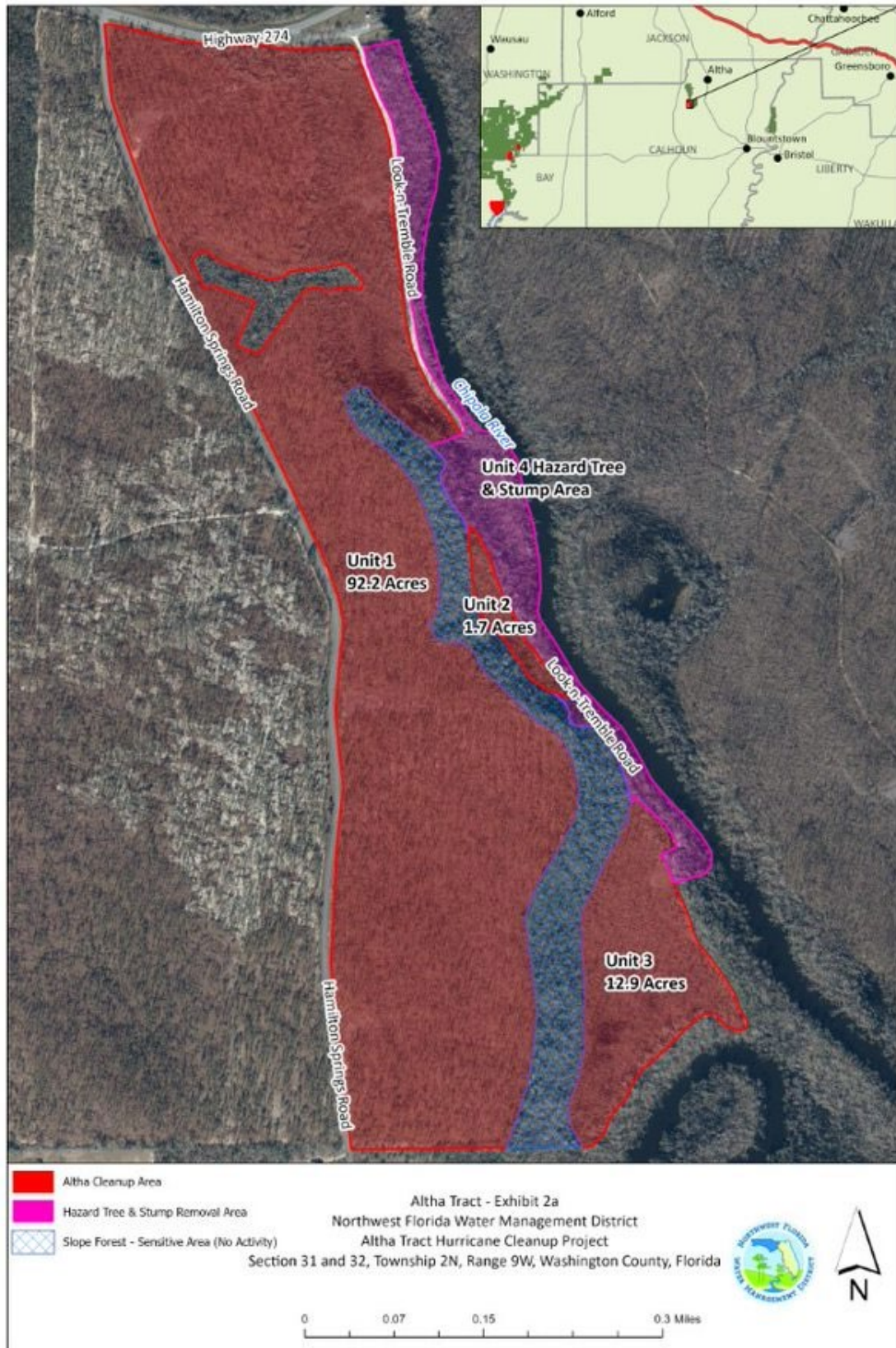
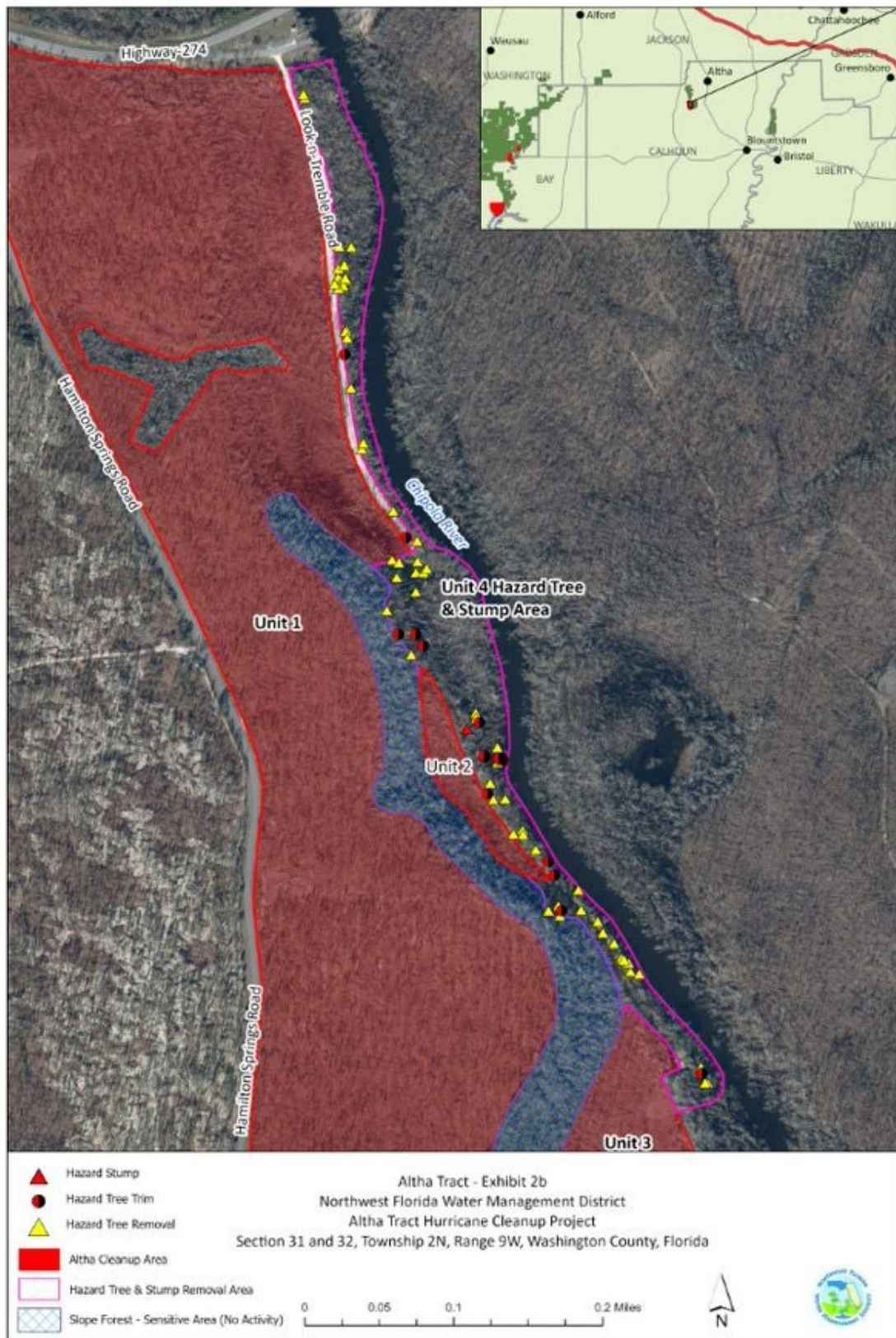


Exhibit 2b



ECONFINA CREEK WATER MANAGEMENT AREA – BLUE SPRING

SCOPE OF WORK – Blue Spring

Background

Hurricane Michael felled and damaged numerous trees on District-owned lands in Bay, Calhoun, Gulf, Holmes Jackson, Liberty and Washington Counties. In southern Washington County, the District's Blue Spring recreation area was heavily impacted by the hurricane. In the months following the storm, essential debris removal and management activities were conducted in portions of this recreation area to provide the minimum amount of cleanup needed to safely re-open the recreation site to the public. Subsequent to that work, recreation area site improvements were completed that included new boardwalks, entry steps to the spring, pavilions, landscaping, walking trails and development of three campsites. Additional cleanup Work is required within the Blue Spring Recreation Area to recover from the Hurricane Michael impacts.

Description of the Work

Within the Blue Spring Recreation Area, the District has identified two Work Zones that currently require additional hurricane debris management services. The Work Zones are: 1) a 4.8-acre area identified on the map as "Blue Spring Cleanup Area" and a separate 3.3 acre area identified on the map as "Hazard Tree and Stump Removal Area". These areas will be cleaned in the following manner:

1. Blue Spring Cleanup Area

The Contractor shall remove from the Blue Spring Cleanup Area (5.1 acres with red shading on Blue Spring Exhibit Map 3a):

- All downed timber;
- All standing dead timber greater than two inches (2") in diameter at breast height (DBH) (including standing stems broken off above the base) This category also includes standing timber that still contains green leaves but no longer has its original vertical top, is broken off below the branches or has the majority of branches broken off;
- All standing live timber greater than two inches (2") (DBH) that is leaning more than 25 degrees from vertical;
- All vegetative debris greater than two inches (2") in diameter that is either down or is felled during the Work.

2. Hazard Tree and Stump Removal Area

Exhibit Map 3a indicates the general location of the hazard trees and stumps to be removed and the Table includes a listing of the trees and stumps that have been marked for removal. The Contractor shall remove from the **Hazard Tree and Stump Removal Area** (area with lavender shading on Blue Spring Exhibit Map 3a and the lavender outline on Blue Spring Exhibit Map 3b):

- All **standing trees** (dead or alive) that have been marked by District staff with yellow paint (yellow paint = remove tree only), **or** yellow and red paint (yellow and red paint = remove tree and stump). These 34 trees are indicated on Blue Spring Exhibit Map 3b with yellow triangles (yellow painted = remove tree only); and yellow and red circles (yellow and red painted = remove tree and stump).
- All **stumps** marked with red paint and all stumps from trees marked with yellow and red paint. These 33 stumps are indicated on Blue Spring Exhibit Map 3b with red triangles (red painted = remove stump only); and yellow and red circles (yellow and red painted = remove tree and stump).
- All **vegetative debris** greater than two inches (2") in diameter that is either down in the vicinity of the targeted trees and stumps or is felled during the Work.
- All stumps designated for removal shall be removed to two inches (minimum) below the level of the surrounding ground. The resulting sawdust, grindings and chips must be removed except for a quantity that covers the stump to the level of the surrounding ground. If a stump is removed by pulling, the Contractor shall replace all dirt from the stump removal back into the stump hole.
- Sawdust, grindings and chips resulting from the onsite stump grinding may be placed into landscaped areas and/or distributed within the Blue Spring Cleanup Area in a layer no more than one inch (1") thick. Any placement in landscaped areas must be approved in advance by the Project Site Manager.

Methods

The Contractor may select the most efficient method or combination of methods for removing the vegetative debris and stumps, including such techniques as cut and haul to an approved disposal or reuse facility; onsite air curtain incineration; pile and burn, onsite chipping with removal of chips, etc. If needed for processing or burning, a cleared (but not stumped) District-owned property within four (4) miles of the Blue Spring Recreation Area can be provided for

temporary use. All areas used for processing or burning must be restored to the site conditions prior to use by the Contractor. The special conditions below must be taken into consideration for any selected vegetative debris management method. **All trees and debris located within identified wetlands will be removed via low impact methods to minimize impacts to wetlands. In addition, all trees and debris will be moved to uplands prior to processing.**

Special Conditions

1. With the exception of debris smaller than 2" (two inches) in diameter, all specified vegetative materials and debris in the project area shall be removed, whether reduced onsite through burning, chipping, or other technique or removed and hauled offsite for disposal or use.
2. Contractor must take care not to damage fences, signs, buildings, boardwalks, trails, gates, docks, gangways, decks, steps, concrete walkways, benches, tables, kiosks, roadways, driveways, landscape plants, sod, parking areas, garbage receptacles, stormwater management facilities and conveyances, and any other items of value owned by the District. All Work that requires crossing grassed lawn areas, sidewalks, trails and soft soils must be performed in a manner that protects these features. Contractor will be held responsible for all damages.
3. The Work area contains known and unmapped, as well as likely unknown karst features, such as sinkholes, cracks, crevasses, springs, and exposed limerock. In some instances, trees and debris to be removed may be near or within karst features. Upon discovery the Contractor will mark with temporary flagging and make efforts to protect karst features during operations and shall not cause trees or debris to enter or remain within karst features.
4. Contractor shall not bury onsite any debris or other materials resulting from or associated with the Work. Ash from burning operations may remain onsite, provided that it is not in piles or disposed of in a manner that would prevent vegetation from growing.
5. Work may occur only during daylight hours, unless otherwise approved by District.
6. The Blue Spring Recreation Area is a public recreation site within the Econfina Creek Water Management Area that is typically open 365 days per year. During the Contractor's Work activities, the site will be closed to the public and the Contractor will control the gates. The Contractor must provide seven (7) calendar days' notice before beginning operations and must perform Work on the site continuously until all of the specified Work is complete.
7. Blue Spring Recreation Area will be closed to the public during the Work. The Contractor shall be responsible for posting appropriate construction site closure and "No Trespassing" signs

at appropriate locations, which shall be removed after completion of the Work. The Contractor will place their own padlocks on the gates and shall ensure that the District's locks on the gates remain functional for access by District staff and toilet maintenance contractors. The Contractor shall be responsible for all site and equipment security and may place a temporary residence (RV/Motorhome, etc.) for security purposes and/or construction trailer, equipment storage lockers, etc., as needed, within the existing parking lot. There is no electricity, running water, or sewage disposal within the Work area. There are two portable toilets that will remain operational and maintained by the District's toilet maintenance contractor throughout the duration of the Work, and which may be used by the Contractor. Trespassing, theft, vandalism and other illegal activities shall be immediately reported to local law enforcement authorities.

8. The Contractor must exercise care to prevent damage to all residual live trees located within the Work areas. Special care shall be given to prevent any damage to any trees not designated for removal by the District. Standing trees not intended for removal will not be used in any manner to facilitate the Contractor's operations.
9. Stumps from removed trees shall be cut as close to the ground as possible and shall not be higher than six inches (6") above the ground except where otherwise authorized by the District. Felled trees with root balls attached shall be cut as close to the root ball as possible.
10. Debris remaining onsite shall not be piled nor left gathered around or near the base of remaining live trees.
11. All "lodged" trees shall be freed and removed.
12. Skidding or dragging trees and debris down or across existing unpaved trails in a manner that would damage the trail is discouraged. Any impacts to existing trails and other site improvements resulting from the Work shall be repaired by the Contractor.
13. The District retains the right to close down operations in inclement weather if soil disturbance in the project area or damage to roads is deemed by the District to be too severe.
14. The Contractor's employees and subcontractors shall enter and exit the project area at the designated points and shall ensure that any gates are securely closed and locked when departing the site. The District may impose a \$50 penalty per day which shall be paid by the Contractor for each occurrence of gates left unlocked or open, or for unauthorized change of locks or access. Alternative access points may be considered but must be approved in writing by the District.

15. The Contractor shall adhere to and implement all applicable federal, state, and local environmental laws and regulations as well as applicable best management practices (BMPs) for silvicultural operations as outlined in the latest version of the Florida Silviculture Best Management Practices Manual. The Contractor is responsible for securing any forestry authorizations that may be required under Chapter 40A-44, Florida Administrative Code, and/or any other local, state, or federal permit or authorization that may be required to conduct the vegetation and debris removal operations. All burning operations shall be managed by a burn manager certified by the Florida Forest Service, shall be authorized as certified burns by the Florida Forest Service and shall be performed in accordance with Chapter 590, Florida Statutes and Chapters 62-256 and 5I-2, FAC.
16. The Contractor shall accept roads in their present condition and accept responsibility and expenses for any improvements in roads necessary to cut, haul, manage, and/or remove the designated vegetation. During operations the Contractor shall maintain all roads in a usable condition, suitable for the vehicular traffic to which the road is normally subjected. The Contractor is solely responsible for maintaining the roads and making them serviceable prior to use, as approved by the District. Rutted roads will be back bladed by the Contractor upon completion of the work and when requested by the District during the work. Road and driveway pavement, paver blocks, sidewalks, and curbs shall be protected from damage, and all damage resulting from the Work shall be repaired by the Contractor.
17. Maintenance of equipment may be conducted on-site only if all product containers, fluids and waste, including used oil, hydraulic oil and all other disposable products, are properly captured and contained, and removed from the site for proper disposal. Petroleum-based fluid spills smaller than 5 (five) gallons that occur from equipment must also be reported to the District, treated with appropriate absorbent and/or other neutralizing agent, and followed by removal and proper disposal of affected soils. Petroleum-based fluid spills 5 (five) gallons or greater in a concentrated spot shall be reported to the District and cleaned up properly. Spills that are 25 gallons or greater must be reported to the Florida Department of Environmental Protection ("DEP") with a field inspection made by DEP, and the Contractor must handle such spills according to DEP instructions. **Spills must not be buried with soil and/or sand and left untreated.** Equipment that constantly leaks fluid and/or causes other problems on site shall be shut down by a District representative and the contractor may be required to remove the problem equipment from the site.
18. The Contractor shall be responsible for seeing that the work area shall remain free from any litter such as oil cans, drums, paper, foam products and other refuse.

19. To minimize the possibility of transporting and spreading exotic plant species, equipment must be cleaned of all dirt and plant material prior to moving onto District land.
20. If warranted by the specific operations employed by the Contractor, the Contractor shall provide and maintain a minimum of two (2) signs stating: "Trucks Entering and Leaving Highway" (or similar acceptable language) and place the signs in appropriate locations.
21. Gopher tortoises are a protected species and may be present within the project areas and in other areas throughout the property. Work crews must prevent impacts to tortoises and their burrows by avoiding burrow aprons and tunnels and watching out for individual tortoises during all operations. Gopher tortoises shall not be injured, captured, moved or removed from District project areas.
22. Project progress for invoicing purposes shall be measured as follows:
 - a. For the **Blue Spring Cleanup Area**, project progress will be measured on a per-acre basis and invoices shall be approved only for work completed and measured by District staff using a GPS unit to determine and delineate acreage and proportion of work within the acreage completed in accordance with the specifications contained herein. Acreage invoiced shall not exceed 4.8 acres.
 - b. For the **Hazard Tree and Stump Removal Area**, project progress shall be measured on percent completed basis for the lump sum work effort.
 - c. The Per-Acre and Lump Sum costs are inclusive of all costs affiliated with completing the work, including but not limited to employee pay, benefit costs, insurance, bonds, fuel, vehicles, transportation, mobilization and demobilization, equipment, communication equipment, GPS units, cameras, PPE, power tools, hand tools, debris handling, management, reduction, and disposal, and any other costs necessary for the contractor to meet project specifications. Any needed fireline preparation and rehabilitation and all planning, permitting, administrative, contract management, and invoicing costs are included.

TABLE – HAZARD TREES AND STUMPS – BLUE SPRING

Tree / Stump No.	Tree / Stump Work Required	Tree / Stump Diameter (Approx.)	Approximate Tree / Stump Location (Latitude/Longitude)
1	Hazard Tree Removal	20	30.4533381685756, -85.5300981436285
2	Hazard Tree and Stump Removal	12	30.4534549335041, -85.5301609074807
3	Hazard Tree and Stump Removal	20	30.4535162065067, -85.5301126275123
4	Hazard Stump Removal	24	30.4530831346307, -85.5303390052801
5	Hazard Stump Removal	8	30.4531178175296, -85.5304476347417
6	Hazard Stump Removal	10	30.4531420958981, -85.5305334662941
7	Hazard Stump Removal	18	30.4531513443698, -85.5305938157651
8	Hazard Tree and Stump Removal	14	30.4528817597277, -85.5303373985935
9	Hazard Stump Removal	20	30.4529649982586, -85.530256932096
10	Hazard Stump Removal	22	30.4529465009338, -85.5301630554117
11	Hazard Stump Removal	18	30.4530228034995, -85.5302113351399
12	Hazard Tree Removal	8	30.452930315592, -85.5300396737768
13	Hazard Tree Removal	10	30.4528852277916, -85.5299565252362
14	Hazard Tree Removal	8	30.4528493891345, -85.5299954168941
15	Hazard Tree and Stump Removal	16	30.4531160603202, -85.5299875945429
16	Hazard Tree and Stump Removal	16	30.4531784891583, -85.5298769531924

Tree / Stump No.	Tree / Stump Work Required	Tree / Stump Diameter (Approx.)	Approximate Tree / Stump Location (Latitude/Longitude)
17	Hazard Stump Removal	10	30.4530860021205, -85.530070742467
18	Hazard Stump Removal	24	30.4530409143679, -85.5300754361046
19	Hazard Stump Removal	20	30.4530565216395, -85.5300935413515
20	Hazard Stump Removal	8	30.4531477368959, -85.5300633661424
21	Hazard Stump Removal	14	30.4530455385782, -85.5300291679211
22	Hazard Stump Removal	24	30.453038601731, -85.5301163406001
23	Hazard Stump Removal	12	30.4531727085188, -85.5299755237414
24	Hazard Stump Removal	20	30.4531432284224, -85.5298756121885
25	Hazard Stump Removal	20	30.4531033429554, -85.5298782938814
26	Hazard Stump Removal	8	30.4530391797793, -85.5299473613628
27	Hazard Stump Removal	10	30.4530287752165, -85.5299460199954
28	Hazard Stump Removal	9	30.4530362895225, -85.5299305971581
29	Hazard Stump Removal	15	30.453153286417, -85.5303606898727
30	Hazard Stump Removal	4	30.453210512757, -85.530418357209
31	Hazard Stump Removal	8	30.4532249637005, -85.5304156742181
32	Hazard Stump Removal	8	30.4532174491038, -85.5304036043592
33	Hazard Stump Removal	30	30.4532983751704, -85.5303338678259
34	Hazard Tree and Stump Removal	20	30.453304156065, -85.5302802234215
35	Hazard Tree and Stump Removal	7	30.4532255417403, -85.5304384738903

Tree / Stump No.	Tree / Stump Work Required	Tree / Stump Diameter (Approx.)	Approximate Tree / Stump Location (Latitude/Longitude)
36	Hazard Tree and Stump Removal	6	30.4532359463726, -85.5304183566537
37	Hazard Tree and Stump Removal	4	30.4532307440202, -85.5304076278183
38	Hazard Tree Removal	8	30.4510483690161, -85.5300926016076
39	Hazard Tree Removal	16	30.451032183535, -85.5300711447801
40	Hazard Tree Removal	4	30.450870789188, -85.5305083454175
41	Hazard Tree Removal	4	30.4509313697443, -85.5304895689513
42	Hazard Tree Removal	8	30.4509013104121, -85.530457382405
43	Hazard Tree Removal	5	30.4508689393043, -85.5304681114399
44	Hazard Tree Removal	10	30.4508273189176, -85.5306518429593
45	Hazard Tree Removal	3	30.4508377242061, -85.5306437961129
46	Hazard Tree Removal	8	30.4507741380346, -85.5306531834873
47	Hazard Tree Removal	2	30.4508134461963, -85.5306344086906
48	Hazard Tree Removal	12	30.4507614206451, -85.5307416967651
49	Hazard Tree Removal	3	30.4509221210849, -85.5307054868622
50	Hazard Tree Removal	4	30.450903623047, -85.5307108516714
51	Hazard Tree Removal	2	30.4509140282047, -85.5306880522837
52	Hazard Tree Removal	1	30.4509417753156, -85.5307081693455
53	Hazard Tree Removal	3	30.4509533360321, -85.5306867116441
54	Hazard Tree Removal	3	30.4509741465173, -85.5306867118184

Tree / Stump No.	Tree / Stump Work Required	Tree / Stump Diameter (Approx.)	Approximate Tree / Stump Location (Latitude/Longitude)
55	Hazard Tree Removal	3	30.4509729903858, -85.5307041456326
56	Hazard Tree Removal	4	30.4509394624127, -85.5306692773621
57	Hazard Tree Removal	4	30.4509279015986, -85.5306706182413
58	Hazard Tree Removal	4	30.4509163401138, -85.5306706178006

HAZARD TREES AND STUMPS TOTALS	TOTAL Number of Marked Trees / Stumps
Hazard Stump Removal	24
Hazard Tree & Stump Removal	9
Hazard Tree Trimming	0
Hazard Tree Removal	25

Exhibit Map 3a

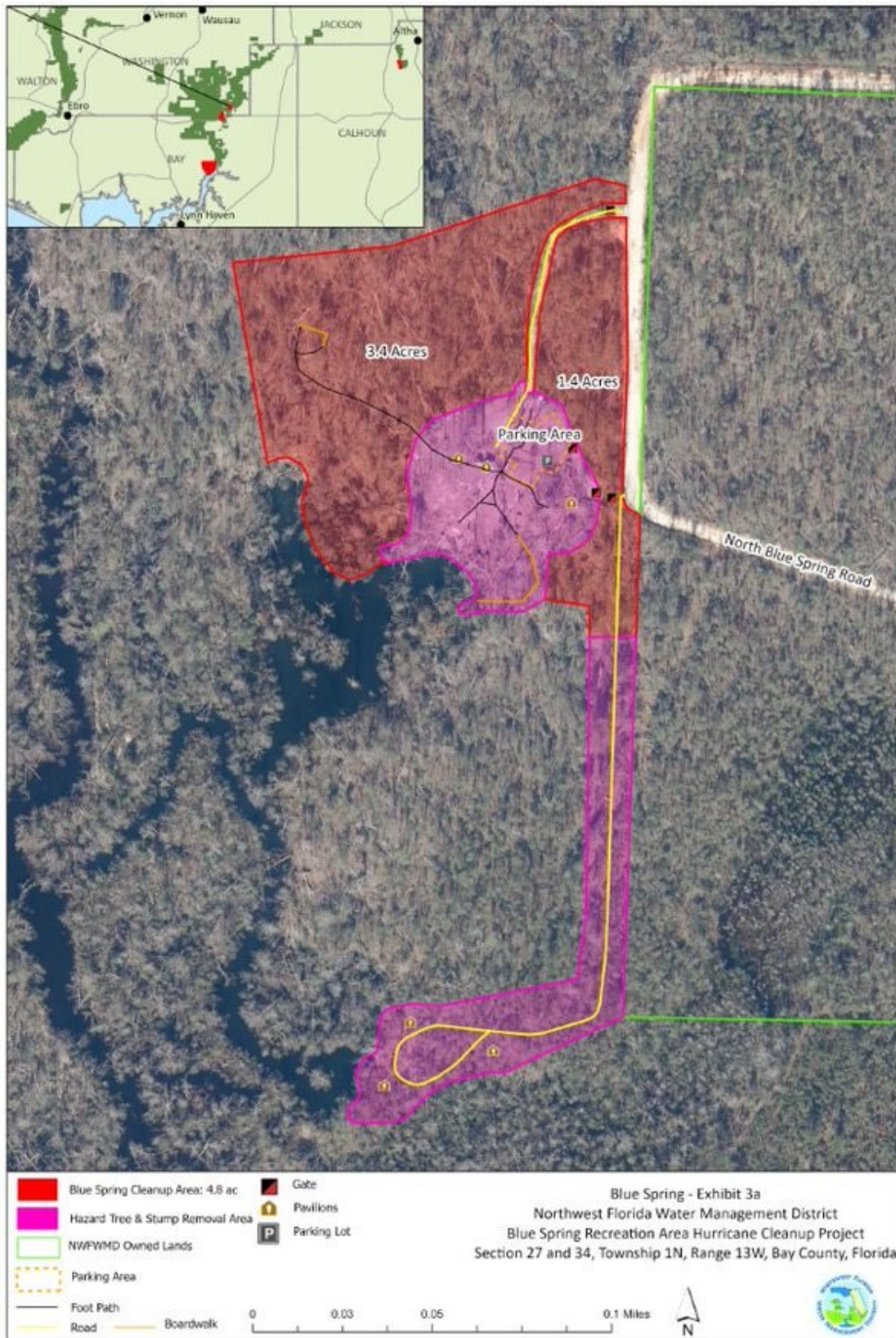
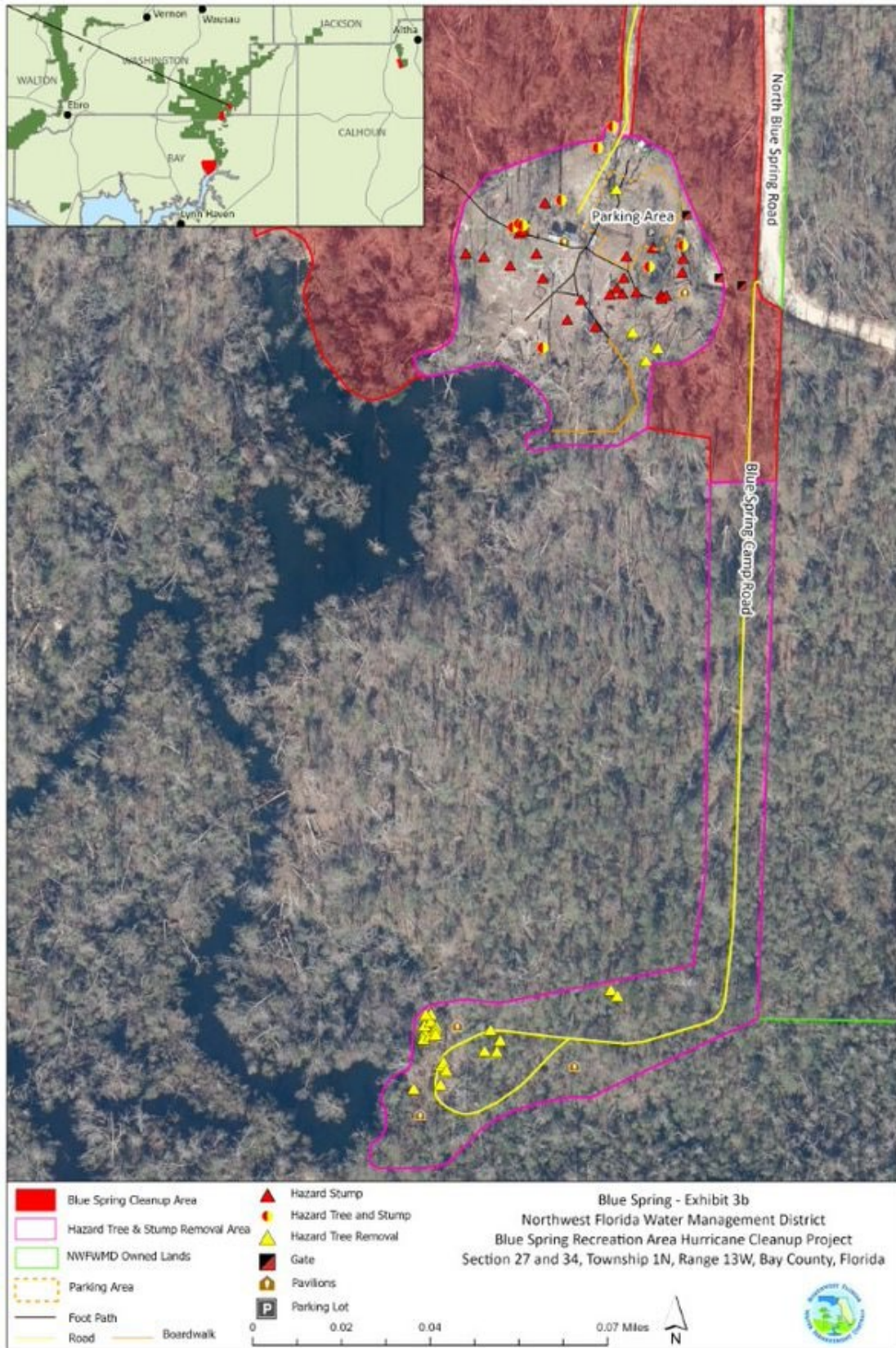


Exhibit Map 3b



SCOPE OF WORK – Williford Spring

Background

Hurricane Michael felled and damaged numerous trees on District-owned lands in Bay, Calhoun, Gulf, Holmes Jackson, Liberty and Washington Counties. In southern Washington County, the District's Williford Spring recreation area was heavily impacted by the hurricane. In the months following the storm, essential debris removal and management activities were conducted in portions of this recreation area to provide the minimum amount of cleanup needed to safely re-open the recreation site to the public. Additional cleanup Work is required within the Williford Spring recreation area to recover from the Hurricane Michael impacts.

Description of the Work

Within the Williford Spring Recreation Area the District has identified 4.1 acres that currently require additional hurricane debris management services. This area will be cleaned in the following manner:

Williford Spring Cleanup Area

The Contractor shall remove from the **Cleanup Area** (4.1 acres with red shading on Exhibit 4):

- All downed timber;
- All standing dead timber greater than two inches (2") in diameter at breast height (DBH) (including standing stems broken off above the base) This category also includes standing timber that still contains green leaves but no longer has its original vertical top, is broken off below the branches or has the majority of branches broken off;
- All standing live timber greater than two inches (2") (DBH) that is leaning more than 25 degrees from vertical;
- All vegetative debris greater than two inches (2") in diameter that is either down or is felled during the Work.

The Contractor may select the most efficient method or combination of methods for removing the vegetative debris and stumps, including such techniques as cut and haul to an approved disposal or reuse facility; onsite air curtain incineration; pile and burn, onsite chipping with removal of chips, etc. If needed for processing or burning, a cleared (but not stumped) District-owned property within 1.5 miles of the Williford Spring Recreation area can be provided for temporary use. All areas used for processing or burning must be restored to the site conditions

prior to use by the Contractor. The special conditions below must be taken into consideration for any selected vegetative debris management method. **All trees and debris located within identified wetlands will be removed via low impact methods to minimize impacts to wetlands. In addition, all trees and debris will be moved to uplands prior to processing.**

Special Conditions

1. With the exception of debris smaller than 2" (two inches) in diameter, all specified vegetative materials and debris in the project area shall be removed, whether reduced onsite through burning, chipping, or other technique or removed and hauled offsite for disposal or use.
2. Contractor must take care not to damage fences, signs, buildings, boardwalks, trails, gates, docks, gangways, decks, steps, concrete walkways, benches, tables, kiosks, roadways, driveways, landscape plants, sod, parking areas, garbage receptacles, stormwater management facilities and conveyances, and any other items of value owned by the District. All Work that requires crossing grassed lawn areas, sidewalks, trails and soft soils must be performed in a manner that protects these features. Contractor will be held responsible for all damages.
3. The Work area contains known and unmapped, as well as likely unknown karst features, such as sinkholes, cracks, crevasses, springs, and exposed limerock. In some instances, trees and debris to be removed may be near or within karst features. Upon discovery the contractor will mark with temporary flagging and make efforts to protect karst features during operations and shall not cause trees or debris to enter or remain within karst features. In particular, the southern portion of the southwestern most clean up unit close to Williford spring and the hiking trail boardwalks is known to have a number of karst features that will need to be protected during the Work.
4. Contractor shall not bury onsite any debris or other materials resulting from or associated with the Work. Ash from burning operations may remain onsite, provided that it is not in piles or disposed of in a manner that would prevent vegetation from growing.
5. Work may occur only during daylight hours, unless otherwise approved by District.
6. The Williford Spring Recreation Area is a public recreation site within the Econfinia Creek Water Management Area that is typically open 365 days per year. During the Contractor's Work activities, the site will be closed to the public and the Contractor will control the gate. The contractor must provide seven (7) calendar days' notice before beginning operations and must perform Work on the site continuously until all of the specified Work is complete.

- 7.** Williford Spring Recreation Area will be closed to the public during the Work. The Contractor shall be responsible for posting appropriate construction site closure and “No Trespassing” signs at appropriate locations, which shall be removed after completion of the Work. The Contractor will place their own padlocks on the gate(s) and shall ensure that the District’s lock(s) on the gates remain functional for access by District staff and toilet maintenance contractors. The Contractor shall be responsible for all site and equipment security and may place a temporary residence (RV/Motorhome, etc.) for security purposes and/or construction trailer, equipment storage lockers, etc., as needed, within the existing parking lot. There is no electricity, running water, or sewage disposal within the Work area. There are two composting toilets that will remain operational and maintained by the District’s contractor throughout the duration of the Work, and which may be used by the Contractor. Trespassing, theft, vandalism and other illegal activities shall be immediately reported to local law enforcement authorities.
- 8.** The Contractor must exercise care to prevent damage to all residual live trees located within the project areas. Special care shall be given to prevent any damage to any trees not designated for removal by the District. Standing trees not intended for removal will not be used in any manner to facilitate the Contractor’s operations.
- 9.** Stumps from removed trees shall be cut as close to the ground as possible and shall not be higher than six inches (6") above the ground except where otherwise authorized by the District. Felled trees with root balls attached shall be cut as close to the root ball as possible.
- 10.** Debris remaining onsite shall not be piled nor left gathered around or near the base of remaining live trees.
- 11.** All "lodged" trees shall be freed and removed.
- 12.** Skidding or dragging trees and debris down or across existing unpaved trails in a manner that would damage the trail is discouraged. Any impacts to existing trails and other site improvements resulting from the Work shall be repaired by the Contractor.
- 13.** The District retains the right to close down operations in inclement weather if soil disturbance in the project area or damage to roads is deemed by the District to be too severe.
- 14.** The Contractor’s employees and subcontractors shall enter and exit the project area at the designated points and shall ensure that any gates are securely closed and locked when departing the site. The District may impose a \$50 penalty per day which shall be paid by the Contractor for each occurrence of gates left unlocked or open, or for unauthorized change of

locks or access. Alternative access points may be considered but must be approved in writing by the District.

15. The Contractor shall adhere to and implement all applicable federal, state, and local environmental laws and regulations as well as applicable best management practices (BMPs) for silvicultural operations as outlined in the latest version of the Florida Silviculture Best Management Practices Manual. The Contractor is responsible for securing any forestry authorizations that may be required under Chapter 40A-44, Florida Administrative Code, and/or any other local, state, or federal permit or authorization that may be required to conduct the vegetation and debris removal operations. All burning operations shall be managed by a burn manager certified by the Florida Forest Service, shall be authorized as certified burns by the Florida Forest Service and shall be performed in accordance with Chapter 590, Florida Statutes and Chapters 62-256 and 5I-2, FAC.
16. The Contractor shall accept roads in their present condition and accept responsibility and expenses for any improvements in roads necessary to cut, haul, manage, and/or remove the designated vegetation. During operations the Contractor shall maintain all roads in a usable condition, suitable for the vehicular traffic to which the road is normally subjected. The Contractor is solely responsible for maintaining the roads and making them serviceable prior to use, as approved by the District. Rutted roads will be back bladed by the Contractor upon completion of the work and when requested by the District during the work. Road and driveway pavement, paver blocks, sidewalks, and curbs shall be protected from damage, and all damage resulting from the Work shall be repaired by the Contractor.
17. Maintenance of equipment may be conducted on-site only if all product containers, fluids and waste, including used oil, hydraulic oil and all other disposable products, are properly captured and contained, and removed from the site for proper disposal. Petroleum-based fluid spills smaller than 5 (five) gallons that occur from equipment must also be reported to the District, treated with appropriate absorbent and/or other neutralizing agent, and followed by removal and proper disposal of affected soils. Petroleum-based fluid spills 5 (five) gallons or greater in a concentrated spot shall be reported to the District and cleaned up properly. Spills that are 25 gallons or greater must be reported to the Florida Department of Environmental Protection ("DEP") with a field inspection made by DEP, and the Contractor must handle such spills according to DEP instructions. **Spills must not be buried with soil and/or sand and left untreated.** Equipment that constantly leaks fluid and/or causes other problems on site shall be shut down by a District representative and the contractor may be required to remove the problem equipment from the site.

18. The Contractor shall be responsible for seeing that the work area shall remain free from any litter such as oil cans, drums, paper, foam products and other refuse.
19. To minimize the possibility of transporting and spreading exotic plant species, equipment must be cleaned of all dirt and plant material prior to moving onto District land.
20. If warranted by the specific operations employed by the Contractor, the Contractor shall provide and maintain a minimum of two (2) signs stating: "Trucks Entering and Leaving Highway" (or similar acceptable language) and place the signs in appropriate locations.
21. Gopher tortoises are a protected species and may be present within the project areas and in other areas throughout the property. Work crews must prevent impacts to tortoises and their burrows by avoiding burrow aprons and tunnels and watching out for individual tortoises during all operations. Gopher tortoises shall not be injured, captured, moved or removed from District project areas.
22. Project progress for invoicing purposes shall be measured as follows:
 - a. For the **Williford Spring Cleanup Area**, project progress will be measured on a per-acre basis and invoices shall be approved only for work completed and measured by District staff using a GPS unit to determine and delineate acreage and proportion of work within the acreage completed in accordance with the specifications contained herein. Acreage invoiced shall not exceed 4.1 acres.
 - b. The Per-Acre and Lump Sum costs are inclusive of all costs affiliated with completing the work, including but not limited to employee pay, benefit costs, insurance, bonds, fuel, vehicles, transportation, mobilization and demobilization, equipment, communication equipment, GPS units, cameras, PPE, power tools, hand tools, debris handling, management, reduction, and disposal, and any other costs necessary for the contractor to meet project specifications. Any needed fireline preparation and rehabilitation and all planning, permitting, administrative, contract management, and invoicing costs are included.

Exhibit Map 4



SCOPE OF WORK – Strickland Road

Background

Hurricane Michael felled severely impacted District-owned land areas in Bay, Calhoun, Gulf, Holmes, Jackson, Liberty and Washington Counties. Within a portion of the Econfina Creek Water Management Area in Bay and Washington Counties, the District has identified approximately 26.3 acres on the Strickland Road tract that currently require hurricane debris management services. The Work area is generally between the Pitt and Sylvan Spring and Williford Spring Recreation Areas and includes a hiking trail that connects these two developed public recreation sites.

While protecting all “leave” trees not designated for removal, the Contractor shall remove from the project area:

- All downed trees greater than 4” (four inches) in diameter;
- All standing dead trees greater than 4” (four inches) in diameter at breast height (DBH) (including all standing stems broken off above the base);
- All standing live trees greater than 4” (four inches) DBH that are leaning more than 25 degrees from vertical;
- All vegetative debris greater than 4” (four inches) in diameter that is either down or is felled during the work.

Methods

The Contractor will select the most efficient method or combination of methods for removing the trees and vegetative debris, including such techniques as cut and haul to an approved disposal or reuse facility; onsite air curtain incineration; pile and burn in areas that will not affect residual trees, onsite chipping with removal or onsite distribution of chips, etc. The special conditions below must be taken into consideration for any selected vegetative debris management method.

The Strickland Road unit includes some areas of relatively steep slopes that will need to be worked in a manner that prevents erosion and minimizes soil disturbance.

Special Conditions

1. The District's Land Management Plan for the East and West Regions provide guidance for contractor activities on District Land. These plans can be viewed at: <https://www.nwfwater.com/Lands/Land-Management>.
2. With the exception of debris smaller than 4" (four inches) in diameter, all specified vegetative debris in the project area shall be processed, whether reduced onsite through burning, chipping, or other technique or removed and hauled offsite for disposal or use.
3. The Contractor must take care not to damage fences, overhead and underground utilities, gates, and any other items of value owned by the District or neighboring property owners. Contractor will be held responsible for all damages. **Contractor shall not enter, traverse, or in any way utilize the adjacent "Reforested Areas" identified on Exhibit 5. These areas have been restored with longleaf pine tree saplings that will sustain damage if equipment enters.**
4. The Contractor shall not bury onsite any debris, garbage, trash, or other materials resulting from or associated with the work. Ash from burning operations may remain onsite, provided that it is not in piles or disposed of in a manner that would prevent vegetation from growing.
5. Work will occur only during daylight hours, unless otherwise approved by District.
6. The Work area is located on public lands within the Econfina Creek Water Management Area. The Contractor shall be responsible for posting appropriate construction site closure and "No Trespassing" signs at appropriate locations within the Work areas as needed, which shall be removed after completion of the Work. The Contractor may utilize any existing District gates and may place temporary gates, fences and/or barricades if needed. Contractor may place their own padlocks on District gate(s) and shall ensure that the District's locks and the locks of other authorized users on the gates remain functional for access by District staff and other authorized users. The Contractor shall be responsible for all site and equipment security and may place a temporary residence (RV/Motorhome, etc.) for security purposes and/or construction trailer, equipment storage lockers, etc., as needed, within the Strickland Road Parking Area. There is no electricity, running water, or sewage disposal within the Work area. Trespassing, theft, vandalism and other illegal activities shall be immediately reported to local law enforcement authorities.
7. The Contractor must exercise care to prevent damage to all residual live trees located within the project areas. Special care shall be given to prevent any damage to any trees not designated for removal by the District. To prevent soil compaction and damage to residual tree root systems, heavy equipment shall not enter the dripline of the residual trees except

when necessary to remove targeted trees and debris. Standing trees not intended for removal will not be used in any manner to facilitate the Contractor's operations.

8. Debris remaining onsite shall not be piled nor left gathered around or near the base of remaining live trees.
9. Stumps from vertical dead and leaning trees shall be cut as close to the ground as possible and shall not be higher than six inches (6") above the ground except where otherwise authorized by the District. Felled trees with root balls attached shall be cut as close to the root ball as possible.
10. All "lodged" trees shall be freed and removed.
11. Skidding trees down existing roads and fire lines is encouraged. However, the creation of barren areas or "skid trails" through repeated skidding across the same ground is discouraged.
12. The District retains the right to close down operations in inclement weather if soil disturbance in the project area or damage to roads is deemed by the District to be too severe.
13. The Contractor's employees and subcontractors shall ensure that gates are securely closed and locked when departing the site. The District may impose a \$50 penalty per day which shall be paid by the Contractor for each occurrence of gates left unlocked or open, or for unauthorized change of locks or access.
14. The Contractor shall adhere to and implement all applicable federal, state, and local environmental laws and regulations as well as applicable best management practices (BMPs) for silvicultural operations as outlined in the latest version of the Florida Silviculture Best Management Practices Manual. The Contractor is responsible for securing any forestry authorizations that may be required under Chapter 40A-44, Florida Administrative Code, and/or any other local, state, or federal permit or authorization that may be required to conduct the vegetation and debris removal operations and shall remain in full compliance with all governing regulations during the course of the Work. All burning operations shall be managed by a burn manager certified by the Florida Forest Service, shall be authorized as certified burns by the Florida Forest Service and shall be performed in accordance with Chapter 590, Florida Statutes and Chapters 62-256 and 5I-2, FAC.
15. The Contractor shall accept roads in their present condition and accept responsibility and expenses for any improvements in roads necessary to cut, haul, manage, and/or remove the designated vegetation. During operations the Contractor shall maintain all roads in a usable

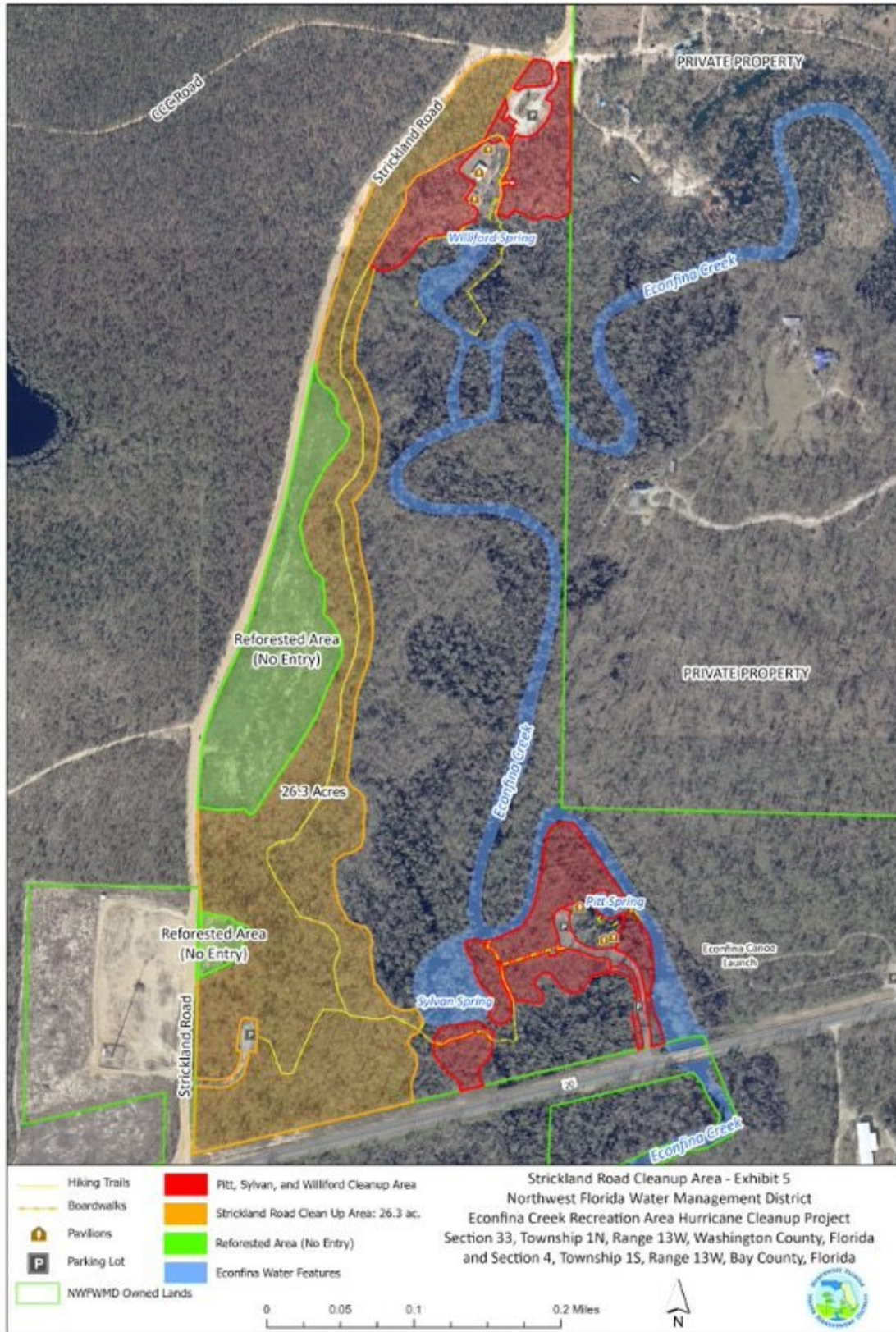
condition, suitable for the vehicular traffic to which the road is normally subjected. The Contractor is solely responsible for maintaining the roads and making them serviceable prior to use, as approved by the District. Ruts on roads will be back bladed by the Contractor upon completion of the work and when requested by the District during the work. The District retains the right to close down the operations in inclement weather if damage to roads or the project area is deemed by the District as becoming too severe.

16. Maintenance of equipment may be conducted on-site only if all product containers, fluids and waste, including used oil, hydraulic oil and all other disposable products, are properly captured and contained, and removed from the site for proper disposal. Petroleum-based fluid spills smaller than 5 (five) gallons that occur from equipment must also be reported to the District, treated with appropriate absorbent and/or other neutralizing agent, and followed by removal and proper disposal of affected soils. Petroleum-based fluid spills 5 (five) gallons or greater in a concentrated spot shall be reported to the District and cleaned up properly. Spills that are 25 gallons or greater must be reported to the Florida Department of Environmental Protection (“DEP”) with a field inspection made by DEP, and the Contractor must handle such spills according to DEP instructions. ***Spills must not be buried with soil and/or sand and left untreated.*** Equipment that constantly leaks fluid and/or causes other problems on site shall be shut down by a District representative and the contractor may be required to remove the problem equipment from the site.
17. The Contractor shall be responsible for seeing that the work area shall remain free from any litter such as oil cans, drums, paper, foam products and other refuse.
18. The Contractor shall provide at least one portable toilet for use by its employees and subcontractors and shall ensure that the portable toilet is serviced on a weekly or more frequent basis.
19. To minimize the possibility of transporting and spreading exotic plant species, equipment must be cleaned of all dirt and plant material prior to moving onto District land.
20. If warranted by the specific operations employed by the contractor, the Contractor shall provide and maintain a minimum of two (2) signs stating: “Trucks Entering and Leaving Highway” (or similar acceptable language) and place the signs in appropriate locations.
21. Gopher tortoises are a protected species and may be present within the project areas and in other areas throughout the property. Work crews must prevent impacts to tortoises and their burrows by avoiding burrow aprons and tunnels and watching out for individual tortoises

during all operations. Gopher tortoises shall not be injured, captured, moved or removed from District project areas.

- 22.** Project progress shall be measured on a per-acre basis and invoices shall be approved only for work completed and measured by District staff using a GPS unit to determine and delineate acreage completed in accordance with the specifications contained herein. The Vegetative Debris Management Cost Per Acre is inclusive of all costs affiliated with completing the work, including but not limited to employee pay, benefit costs, insurance, bonds, fuel, vehicles, transportation, mobilization and demobilization, equipment, communication equipment, GPS units, cameras, PPE, power tools, hand tools, and any other costs necessary for the contractor to meet project specifications. Any needed fireline preparation and rehabilitation and all planning, permitting, administrative, contract management, and invoicing costs are included.

Exhibit Map 5



SCOPE OF WORK – Pitt and Sylvan Springs

Background

Hurricane Michael felled and damaged numerous trees on District-owned lands in Bay, Calhoun, Gulf, Holmes Jackson, Liberty and Washington Counties. In northern Bay County, the District's Pitt and Sylvan Springs recreation area was heavily impacted by the hurricane. In the months following the storm, essential debris removal and management activities were conducted in portions of this recreation area to provide the minimum amount of cleanup needed to safely re-open the recreation site to the public. Additional cleanup Work is required within the Pitt and Sylvan Springs recreation area to recover from the Hurricane Michael impacts.

Description of the Work

Within the Pitt and Sylvan Springs Recreation Area the District has identified 5.7 acres that currently require additional hurricane debris management services. Within this area are two Work zones; a 5.1-acre area identified on the map as "Pitt and Sylvan Springs Cleanup Area" and 0.6 acres identified on the map as "Hazard Tree and Stump Removal Area". These areas will be cleaned in the following manner:

3. Pitt and Sylvan Springs Cleanup Area

The Contractor shall remove from the **Cleanup Area (5.1 acres with red shading on Pitt Spring Exhibit Map 6a)**:

- All downed timber;
- All standing dead timber greater than two inches (2") in diameter at breast height (DBH) (including standing stems broken off above the base) This category also includes standing timber that still contains green leaves but no longer has its original vertical top, is broken off below the branches or has the majority of branches broken off;
- All standing live timber greater than two inches (2") (DBH) that is leaning more than 25 degrees from vertical;
- All vegetative debris greater than two inches (2") in diameter that is either down or is felled during the Work.

4. Hazard Tree and Stump Removal Area

Exhibit Map 6b indicates the general location of the hazard trees and stumps to be removed and Table 1 includes a listing of the trees and stumps that have been marked for removal. The Contractor shall remove from the **Hazard Tree and Stump Removal Area (area with lavender shading on Pitt Spring Exhibit Map 6a and the lavender outline on Pitt Spring Exhibit Map 6b)**:

- All **standing trees** (dead or alive) that have been marked by District staff with yellow paint (yellow paint = remove tree only), **or** yellow and red paint (yellow and red paint = remove tree and stump). These three trees are indicated on Pitt Spring Exhibit Map 5b with yellow triangles (yellow painted = remove tree only); and yellow and red circles (yellow and red painted = remove tree and stump).
- All **dead trees** whether marked or unmarked. These trees have not been quantified.
- All **stumps** marked with red paint and all stumps from trees marked with yellow and red paint. These 17 stumps are indicated on Pitt Spring Exhibit Map 5b with red triangles (red painted = remove stump only); and yellow and red circles (yellow and red painted = remove tree and stump).
- All **vegetative debris** greater than two inches (2") in diameter that is either down or is felled during the Work.
- All stumps designated for removal shall be removed to two inches (minimum) below the level of the surrounding ground. The resulting sawdust, grindings and chips must be removed except for a quantity that covers the stump to the level of the surrounding ground. If a stump is removed by pulling, the Contractor shall replace all dirt from the stump removal back into the stump hole.
- Sawdust, grindings and chips resulting from the onsite stump grinding may be placed into landscaped areas and/or distributed within the Pitt and Sylvan Springs Cleanup Area in a layer no more than one inch (1") thick. Any placement in landscaped areas must be approved in advance by the Project Site Manager.

Methods

The Contractor may select the most efficient method or combination of methods for removing the vegetative debris and stumps, including such techniques as cut and haul to an approved disposal or reuse facility; onsite air curtain incineration; pile and burn, onsite chipping with removal of chips, etc. If needed for processing or burning, a cleared (but not stumped) District-owned property within 1.5 miles of the Pitt and Sylvan Spring Recreation area can be provided for temporary use. All areas used for processing or burning must be restored to the site conditions prior to use by the Contractor. The special conditions below must be taken into consideration for any selected vegetative debris management method. **All trees and debris located within identified wetlands will be removed via low impact methods to minimize impacts to wetlands. In addition, all trees and debris will be moved to uplands prior to processing.**

Special Conditions

1. With the exception of debris smaller than 2" (two inches) in diameter, all specified vegetative materials and debris in the project area shall be removed, whether reduced onsite through burning, chipping, or other technique or removed and hauled offsite for disposal or use.
2. Contractor must take care not to damage fences, signs, buildings, boardwalks, trails, gates, docks, gangways, decks, steps, concrete walkways, benches, tables, kiosks, roadways, driveways, landscape plants, sod, parking areas, garbage receptacles, stormwater management facilities and conveyances, and any other items of value owned by the District. All Work that requires crossing grassed lawn areas, sidewalks, trails and soft soils must be performed in a manner that protects these features. Contractor will be held responsible for all damages.
3. The Work area contains known and unmapped, as well as likely unknown karst features, such as sinkholes, cracks, crevasses, springs, and exposed limerock. In some instances, trees and debris to be removed may be near or within karst features. Upon discovery the Contractor will mark with temporary flagging and make efforts to protect karst features during operations and shall not cause trees or debris to enter or remain within karst features.
4. Contractor shall not bury onsite any debris or other materials resulting from or associated with the Work. Ash from burning operations may remain onsite, provided that it is not in piles or disposed of in a manner that would prevent vegetation from growing.
5. Work may occur only during daylight hours, unless otherwise approved by District.
6. The Pitt and Sylvan Springs Recreation Area is a public recreation site within the Econfina Creek Water Management Area that is typically open 365 days per year. During the Contractor's Work activities, the site will be closed to the public and the Contractor will control the gate. The Contractor must provide seven (7) calendar days' notice before beginning operations and must perform Work on the site continuously until all of the specified Work is complete.
7. Pitt and Sylvan Spring Recreation Area will be closed to the public during the Work. The Contractor shall be responsible for posting appropriate construction site closure and "No Trespassing" signs at appropriate locations, which shall be removed after completion of the Work. The Contractor will place their own padlocks on the gate(s) and shall ensure that the District's lock(s) on the gates remain functional for access by District staff and toilet maintenance contractors. The Contractor shall be responsible for all site and equipment security and may place a temporary residence (RV/Motorhome, etc.) for security purposes and/or construction trailer, equipment storage lockers, etc., as needed, within the existing

parking lot. There is no electricity, running water, or sewage disposal within the Work area. There are two composting toilets that will remain operational and maintained by the District's toilet maintenance contractor throughout the duration of the Work, and which may be used by the Contractor. Trespassing, theft, vandalism and other illegal activities shall be immediately reported to local law enforcement authorities.

8. The Contractor must exercise care to prevent damage to all residual live trees located within the project areas. Special care shall be given to prevent any damage to any trees not designated for removal by the District. Standing trees not intended for removal will not be used in any manner to facilitate the Contractor's operations.
9. Stumps from removed trees shall be cut as close to the ground as possible and shall not be higher than six inches (6") above the ground except where otherwise authorized by the District. Felled trees with root balls attached shall be cut as close to the root ball as possible.
10. Debris remaining onsite shall not be piled nor left gathered around or near the base of remaining live trees.
11. All "lodged" trees shall be freed and removed.
12. Skidding or dragging trees and debris down or across existing unpaved trails in a manner that would damage the trail is discouraged. Any impacts to existing trails and other site improvements resulting from the Work shall be repaired by the Contractor.
13. The District retains the right to close down operations in inclement weather if soil disturbance in the project area or damage to roads is deemed by the District to be too severe.
14. The Contractor's employees and subcontractors shall enter and exit the project area at the designated points and shall ensure that any gates are securely closed and locked when departing the site. The District may impose a \$50 penalty per day which shall be paid by the Contractor for each occurrence of gates left unlocked or open, or for unauthorized change of locks or access. Alternative access points may be considered but must be approved in writing by the District.
15. The Contractor shall adhere to and implement all applicable federal, state, and local environmental laws and regulations as well as applicable best management practices (BMPs) for silvicultural operations as outlined in the latest version of the Florida Silviculture Best Management Practices Manual. The Contractor is responsible for securing any forestry authorizations that may be required under Chapter 40A-44, Florida Administrative Code, and/or any other local, state, or federal permit or authorization that may be required to

conduct the vegetation and debris removal operations. All burning operations shall be managed by a burn manager certified by the Florida Forest Service, shall be authorized as certified burns by the Florida Forest Service and shall be performed in accordance with Chapter 590, Florida Statutes and Chapters 62-256 and 5I-2, FAC.

16. The Contractor shall accept roads in their present condition and accept responsibility and expenses for any improvements in roads necessary to cut, haul, manage, and/or remove the designated vegetation. During operations the Contractor shall maintain all roads in a usable condition, suitable for the vehicular traffic to which the road is normally subjected. The Contractor is solely responsible for maintaining the roads and making them serviceable prior to use, as approved by the District. Rutted roads will be back bladed by the Contractor upon completion of the work and when requested by the District during the work. Road and driveway pavement, paver blocks, sidewalks, and curbs shall be protected from damage, and all damage resulting from the Work shall be repaired by the Contractor.
17. Maintenance of equipment may be conducted on-site only if all product containers, fluids and waste, including used oil, hydraulic oil and all other disposable products, are properly captured and contained, and removed from the site for proper disposal. Petroleum-based fluid spills smaller than 5 (five) gallons that occur from equipment must also be reported to the District, treated with appropriate absorbent and/or other neutralizing agent, and followed by removal and proper disposal of affected soils. Petroleum-based fluid spills 5 (five) gallons or greater in a concentrated spot shall be reported to the District and cleaned up properly. Spills that are 25 gallons or greater must be reported to the Florida Department of Environmental Protection (“DEP”) with a field inspection made by DEP, and the Contractor must handle such spills according to DEP instructions. ***Spills must not be buried with soil and/or sand and left untreated.*** Equipment that constantly leaks fluid and/or causes other problems on site shall be shut down by a District representative and the contractor may be required to remove the problem equipment from the site.
18. The Contractor shall be responsible for seeing that the work area shall remain free from any litter such as oil cans, drums, paper, foam products and other refuse.
19. To minimize the possibility of transporting and spreading exotic plant species, equipment must be cleaned of all dirt and plant material prior to moving onto District land.
20. If warranted by the specific operations employed by the Contractor, the Contractor shall provide and maintain a minimum of two (2) signs stating: “Trucks Entering and Leaving Highway” (or similar acceptable language) and place the signs in appropriate locations.

21. Gopher tortoises are a protected species and may be present within the project areas and in other areas throughout the property. Work crews must prevent impacts to tortoises and their burrows by avoiding burrow aprons and tunnels and watching out for individual tortoises during all operations. Gopher tortoises shall not be injured, captured, moved or removed from District project areas.

22. Project progress for invoicing purposes shall be measured as follows:

- a. For the **Pitt and Sylvan Springs Cleanup Area**, project progress will be measured on a per-acre basis and invoices shall be approved only for work completed and measured by District staff using a GPS unit to determine and delineate acreage and proportion of work within the acreage completed in accordance with the specifications contained herein. Acreage invoiced shall not exceed 5.1 acres.
- b. For the **Hazard Tree and Stump Removal Area**, project progress shall be measured on percent completed basis for the lump sum work effort.
- c. The Per-Acre and Lump Sum costs are inclusive of all costs affiliated with completing the work, including but not limited to employee pay, benefit costs, insurance, bonds, fuel, vehicles, transportation, mobilization and demobilization, equipment, communication equipment, GPS units, cameras, PPE, power tools, hand tools, debris handling, management, reduction, and disposal, and any other costs necessary for the contractor to meet project specifications. Any needed fireline preparation and rehabilitation and all planning, permitting, administrative, contract management, and invoicing costs are included.

TABLE – HAZARD TREES AND STUMPS – PITT SPRING

Tree / Stump No.	Tree / Stump Work Required	Tree / Stump Diameter (Approx.)	Approximate Tree / Stump Location (Latitude/Longitude)
1	Hazard Stump Removal	12	30.4327939423197, -85.5461240334303
2	Hazard Stump Removal	10	30.4328251633739, -85.5460717301759
3	Hazard Tree and Stump Removal	16	30.432530876757, -85.5462004764592

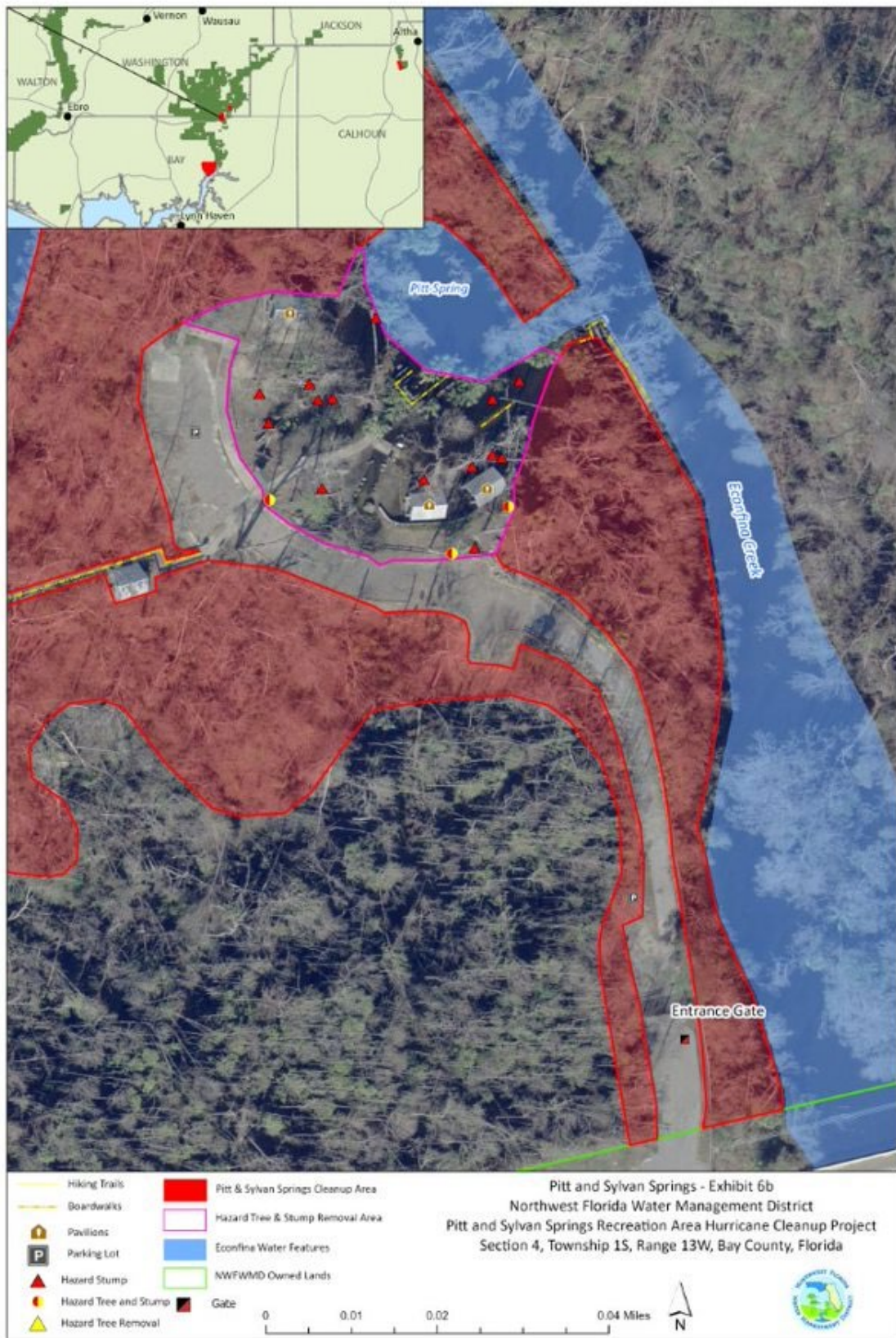
Tree / Stump No.	Tree / Stump Work Required	Tree / Stump Diameter (Approx.)	Approximate Tree / Stump Location (Latitude/Longitude)
4	Hazard Tree and Stump Removal	10	30.4326112420802, -85.5460905055202
5	Hazard Stump Removal	12	30.432656917328, -85.546256803247
6	Hazard Stump Removal	12	30.4326794656607, -85.5461629260441
7	Hazard Stump Removal	12	30.4326997010954, -85.5461233626784
8	Hazard Stump Removal	14	30.4326944979324, -85.5461045876387
9	Hazard Stump Removal	16	30.4325417459011, -85.5461562198442
10	Hazard Tree and Stump Removal	10	30.432618757783, -85.5465578813568
11	Hazard Stump Removal	14	30.4326401499906, -85.5464552866564
12	Hazard Stump Removal	12	30.432929232753, -85.546353362872
13	Hazard Stump Removal	24	30.432750001658, -85.5465612335808
14	Hazard Stump Removal	6	30.432799723793, -85.5465793390186
15	Hazard Stump Removal	10	30.432817068668, -85.5464821081165
16	Hazard Stump Removal	12	30.4327927862951, -85.5464365110945
17	Hazard Stump Removal	12	30.4327898951409, -85.5464646740916

HAZARD TREES AND STUMPS TOTALS	TOTAL Number of Marked Trees/Stumps
Hazard Stump Removal	14
Hazard Tree & Stump Removal	3
Hazard Tree Trimming	0
Hazard Tree Removal	0

Exhibit Map 6a



Exhibit Map 6b



ECONFINA CREEK WATER MANAGEMENT AREA – HOBBS PASTURE

SCOPE OF WORK

Background

Hurricane Michael felled severely impacted District-owned land areas in Bay, Calhoun, Gulf, Holmes, Jackson, Liberty and Washington Counties. Within the Bay County portion of Econfina Creek Water Management Area, the District has identified approximately 652 acres on the Hobbs Pasture tract that currently require hurricane debris management services. The Work area has been divided into eight discrete work units, as illustrated on the attached Exhibit 7 map.

While protecting all “leave” trees not designated for removal, the Contractor shall remove from the project area:

- All downed trees greater than 4” (four inches) in diameter;
- All standing dead trees greater than 4” (four inches) in diameter at breast height (DBH) (including all standing stems broken off above the base);
- All standing live trees greater than 4” (four inches) DBH that are leaning more than 25 degrees from vertical;
- All vegetative debris greater than 4” (four inches) in diameter that is either down or is felled during the work.

Methods

The Contractor will select the most efficient method or combination of methods for removing the trees and vegetative debris, including such techniques as cut and haul to an approved disposal or reuse facility; onsite air curtain incineration; pile and burn in areas that will not affect residual trees, onsite chipping with removal or onsite distribution of chips, etc. The special conditions below must be taken into consideration for any selected vegetative debris management method.

Hobbs Pasture has numerous wetland areas associated with creeks, streams, Deerpoint Lake, and isolated ponds and wetlands. The Work unit boundaries provided are intended to exclude wetlands that have been identified through remote sensing methods utilizing an existing Statewide Land Use Land Cover data set (FDEP). Work units are areas previously silvicultured in pine and the task is to prepare the Work unit for reforestation of the upland pine forest areas that existed prior to Hurricane Michael, but the Work may also include removal of trees and debris that cross into or are within wetland areas associated with a Unit. Any soil disturbance in

wetlands is to be minimized utilizing low impact equipment and methods (e.g. skidders or knuckle booms). Contractor may remove such trees and debris from wetland areas using methods that do not disturb the soil or may elect to not work ground impacting equipment in wetland areas. Hobbs Pasture Exhibit Map 7 includes a general depiction of wetlands according to the data source used, but this is not based on a jurisdictional wetland delineation. Contractor must discern wetland areas during Work operations.

****All trees and debris located within identified wetlands will be removed via low impact methods to minimize impacts to wetlands. In addition, all trees and debris will be moved to uplands prior to processing.****

Special Conditions

1. The District's Land Management Plan for the East and West Regions provide guidance for contractor activities on District Land. These plans can be viewed at: <https://www.nwfwater.com/Lands/Land-Management>.
2. With the exception of debris smaller than 4" (four inches) in diameter, all specified vegetative debris in the project area shall be processed, whether reduced onsite through burning, chipping, or other technique or removed and hauled offsite for disposal or use.
3. The Contractor must take care not to damage fences, overhead and underground utilities, gates, and any other items of value owned by the District or neighboring property owners. Contractor will be held responsible for all damages.
4. The Contractor shall not bury onsite any debris, garbage, trash, or other materials resulting from or associated with the work. Ash from burning operations may remain onsite, provided that it is not in piles or disposed of in a manner that would prevent vegetation from growing.
5. Work will occur only during daylight hours, unless otherwise approved by District.
6. The Work area is located on public lands within the Econfina Creek Water Management Area. The Contractor shall be responsible for posting appropriate construction site closure and "No Trespassing" signs at appropriate locations within the Work areas as needed, which shall be removed after completion of the Work. The Contractor may utilize any existing District gates and may place temporary gates, fences and/or barricades if needed. Contractor may place their own padlocks on District gate(s) and shall ensure that the District's locks and the locks of other authorized users on the gates remain functional for access by District staff and other authorized users. The Contractor shall be responsible for all site and equipment security and may place a temporary residence (RV/Motorhome, etc.) for security purposes and/or

construction trailer, equipment storage lockers, etc., as needed, within an area approved by the District's Site Manager. There is no electricity, running water, or sewage disposal within the Work area. Trespassing, theft, vandalism and other illegal activities shall be immediately reported to local law enforcement authorities.

7. The Contractor must exercise care to prevent damage to all residual live trees located within the project areas. Special care shall be given to prevent any damage to any trees not designated for removal by the District. To prevent soil compaction and damage to residual tree root systems, heavy equipment shall not enter the dripline of the residual trees except when necessary to remove targeted trees and debris. Standing trees not intended for removal will not be used in any manner to facilitate the Contractor's operations.
8. Debris remaining onsite shall not be piled nor left gathered around or near the base of remaining live trees.
9. Stumps from vertical dead and leaning trees shall be cut as close to the ground as possible and shall not be higher than six inches (6") above the ground except where otherwise authorized by the District. Felled trees with root balls attached shall be cut as close to the root ball as possible.
10. All "lodged" trees shall be freed and removed.
11. Skidding trees down existing roads and fire lines is encouraged. However, the creation of barren areas or "skid trails" through repeated skidding across the same ground is discouraged.
12. The District retains the right to close down operations in inclement weather if soil disturbance in the project area or damage to roads is deemed by the District to be too severe.
13. The Contractor shall adhere to and implement all applicable federal, state, and local environmental laws and regulations as well as applicable best management practices (BMPs) for silvicultural operations as outlined in the latest version of the Florida Silviculture Best Management Practices Manual. The Contractor is responsible for securing any forestry authorizations that may be required under Chapter 40A-44, Florida Administrative Code, and/or any other local, state, or federal permit or authorization that may be required to conduct the vegetation and debris removal operations and shall remain in full compliance with all governing regulations during the course of the Work. All burning operations shall be managed by a burn manager certified by the Florida Forest Service, shall be authorized as certified burns by the Florida Forest Service and shall be performed in accordance with Chapter 590, Florida Statutes and Chapters 62-256 and 5I-2, FAC.

14. The Contractor shall accept roads in their present condition and accept responsibility and expenses for any improvements in roads necessary to cut, haul, manage, and/or remove the designated vegetation. During operations the Contractor shall maintain all roads in a usable condition, suitable for the vehicular traffic to which the road is normally subjected. The Contractor is solely responsible for maintaining the roads and making them serviceable prior to use, as approved by the District. Ruts on roads will be back bladed by the Contractor upon completion of the work and when requested by the District during the work. The District retains the right to close down the operations in inclement weather if damage to roads or the project area is deemed by the District as becoming too severe.
15. Maintenance of equipment may be conducted on-site only if all product containers, fluids and waste, including used oil, hydraulic oil and all other disposable products, are properly captured and contained, and removed from the site for proper disposal. Petroleum-based fluid spills smaller than 5 (five) gallons that occur from equipment must also be reported to the District, treated with appropriate absorbent and/or other neutralizing agent, and followed by removal and proper disposal of affected soils. Petroleum-based fluid spills 5 (five) gallons or greater in a concentrated spot shall be reported to the District and cleaned up properly. Spills that are 25 gallons or greater must be reported to the Florida Department of Environmental Protection (“DEP”) with a field inspection made by DEP, and the Contractor must handle such spills according to DEP instructions. **Spills must not be buried with soil and/or sand and left untreated.** Equipment that constantly leaks fluid and/or causes other problems on site shall be shut down by a District representative and the contractor may be required to remove the problem equipment from the site.
16. The Contractor shall be responsible for seeing that the work area shall remain free from any litter such as oil cans, drums, paper, foam products and other refuse.
17. The Contractor shall provide at least one portable toilet for use by its employees and subcontractors and shall ensure that the portable toilet is serviced on a weekly or more frequent basis.
18. To minimize the possibility of transporting and spreading exotic plant species, equipment must be cleaned of all dirt and plant material prior to moving onto District land.
19. If warranted by the specific operations employed by the contractor, the Contractor shall provide and maintain a minimum of two (2) signs stating: “Trucks Entering and Leaving Highway” (or similar acceptable language) and place the signs in appropriate locations.

- 20.** Gopher tortoises are a protected species and may be present within the project areas and in other areas throughout the property. Work crews must prevent impacts to tortoises and their burrows by avoiding burrow aprons and tunnels and watching out for individual tortoises during all operations. Gopher tortoises shall not be injured, captured, moved or removed from District project areas.
- 21.** Project progress shall be measured on a per-acre basis and invoices shall be approved only for work completed and measured by District staff using a GPS unit to determine and delineate acreage completed in accordance with the specifications contained herein. The Vegetative Debris Management Cost Per Acre is inclusive of all costs affiliated with completing the work, including but not limited to employee pay, benefit costs, insurance, bonds, fuel, vehicles, transportation, mobilization and demobilization, equipment, communication equipment, GPS units, cameras, PPE, power tools, hand tools, and any other costs necessary for the contractor to meet project specifications. Any needed fireline preparation and rehabilitation and all planning, permitting, administrative, contract management, and invoicing costs are included.

Exhibit Map 7

