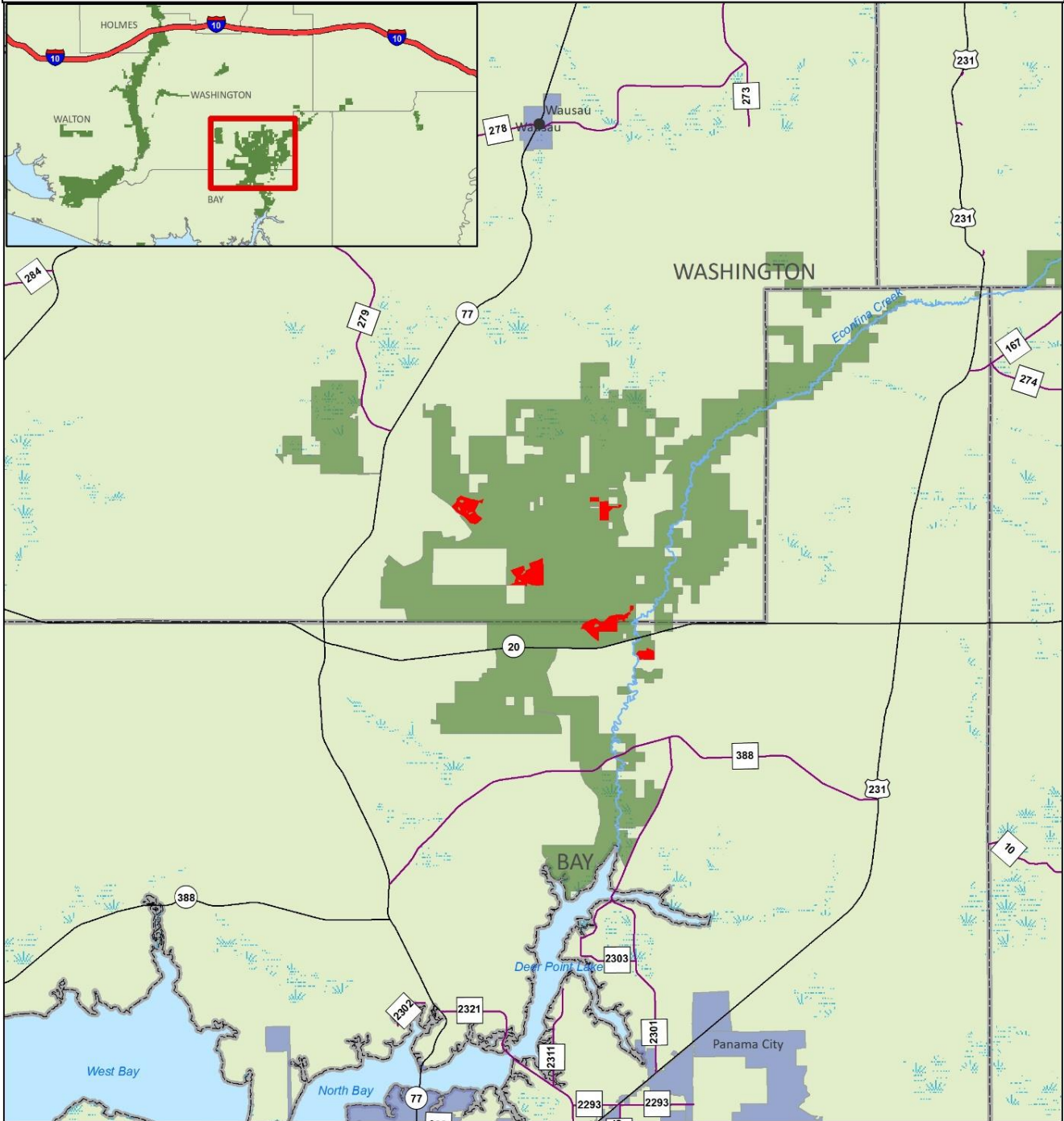


Exhibit Map A

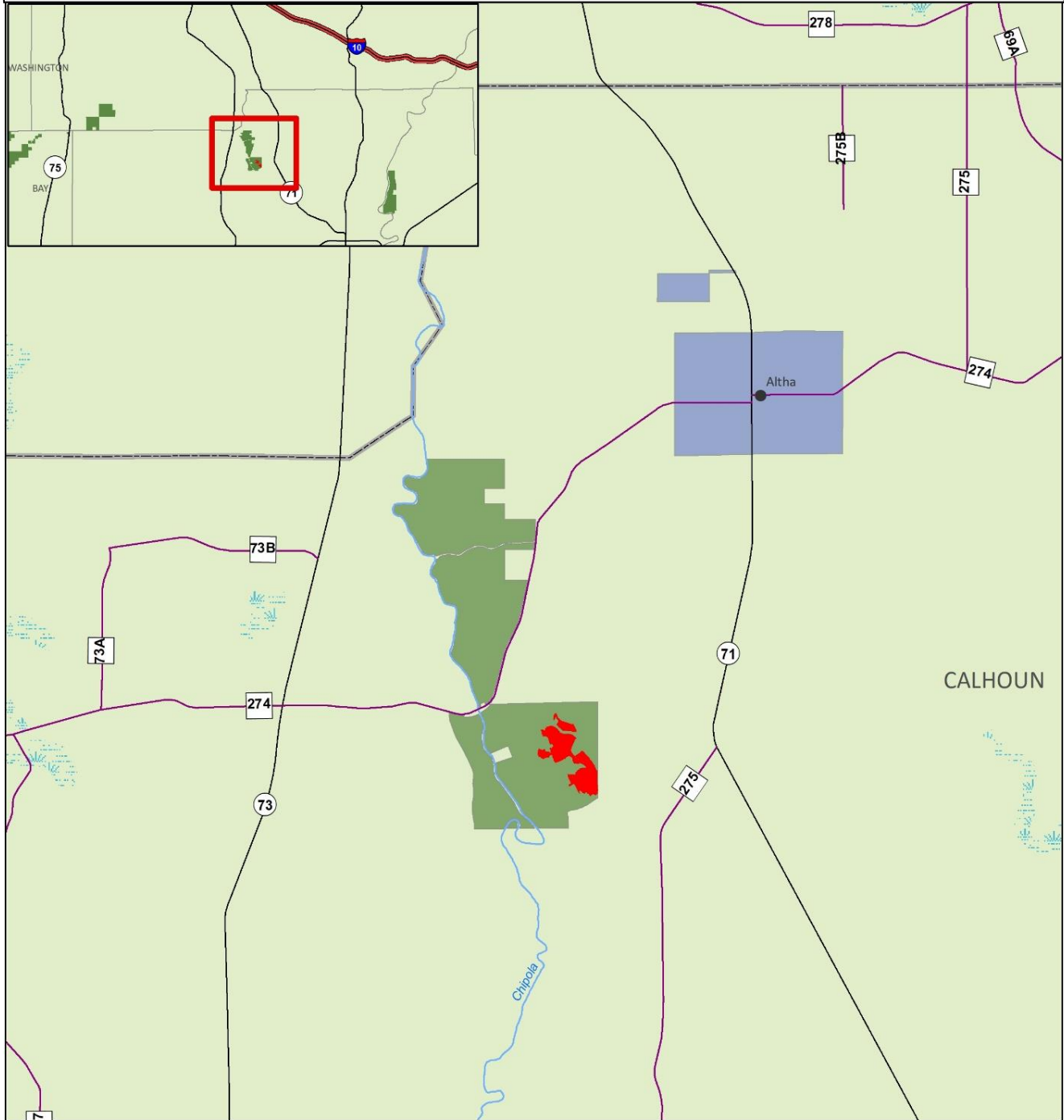


General Location Map
 2021 Reforestation Project
 Econfina Creek Water Management Area
 Bay and Washington Counties, Florida
 951 Acres

- Reforestation Areas
- District Lands



Exhibit Map B

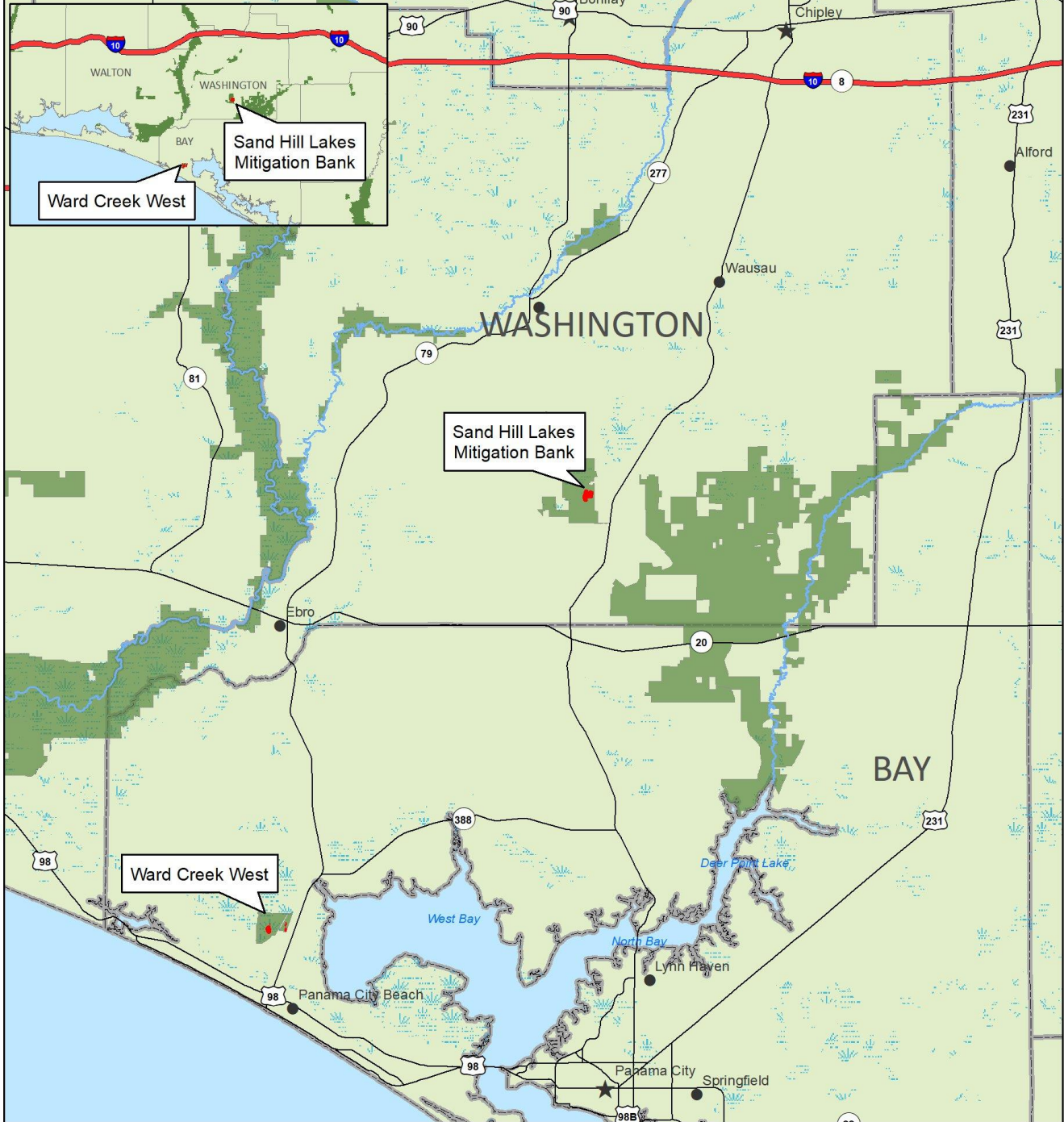


- Reforestation Areas
- District Lands

0 0.5 1 2 Miles



Exhibit Map C



- Groundcover Restoration
- District Lands

General Location Map
 2021 Groundcover Restoration Project
 Econfina Creek WMA & Ward Creek West
 Washington and Bay Counties, Florida
 57 Acres

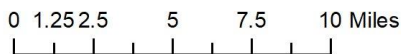

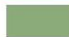


Exhibit Map D



General Location Map
2021 Groundcover Restoration Project
Perdido River Water Management Area
Escambia County, Florida
25 Acres

-  Groundcover Restoration
-  District Lands

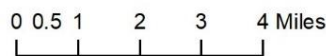
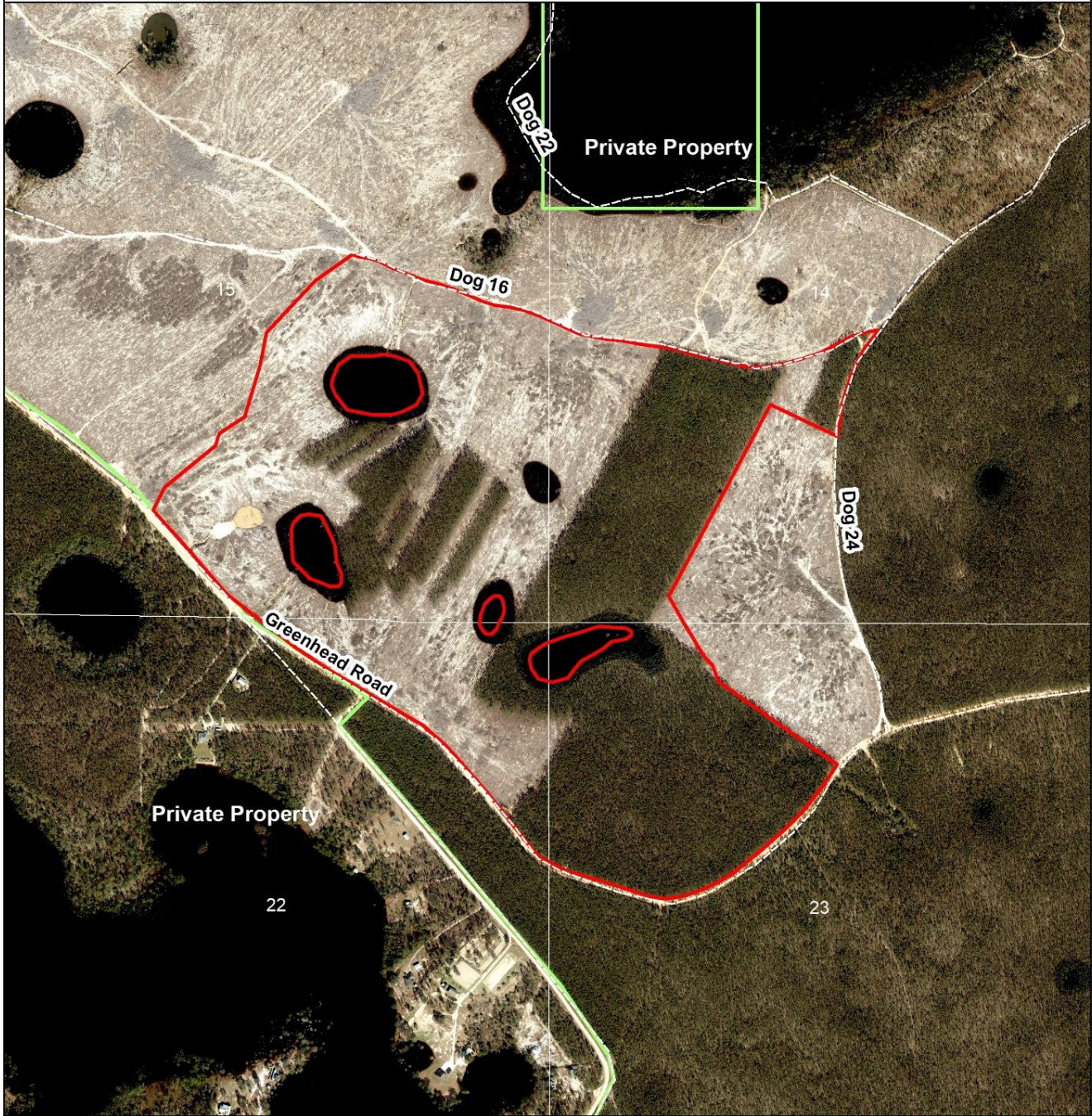


Exhibit Map 1



-  Reforestation Area
-  District Lands

2021 Reforestation Project - Stand 1
Econfina Creek Water Management Area
Sections 14/15/22/23, Township 1N, Range 14W
Washington County, Florida
Longleaf Reforestation Area @ 726 Trees Per Acre
6' X 10' Spacing
223 Acres

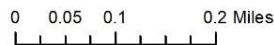


Exhibit Map 2



2021 Reforestation Project - Stand 2
Econfina Creek Water Management Area
Sections 17, T1N, R13W
Washington County, Florida
Longleaf Reforestation Area @ 726 Trees Per Acre
6' X 10' Spacing
21 Acres

-  District Lands
-  Reforestation Area

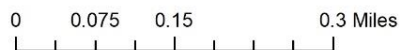


Exhibit Map 3



2021 Reforestation Project - Stand 3
Econfina Creek Water Management Area
Sections 16, 17, & 20 T1N, R13W
Washington County, Florida
Longleaf Reforestation Area @ 726 Trees Per Acre
6' X 10' Spacing
98 Acres

-  Reforestation Area
-  District Lands

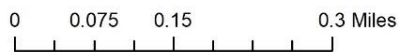
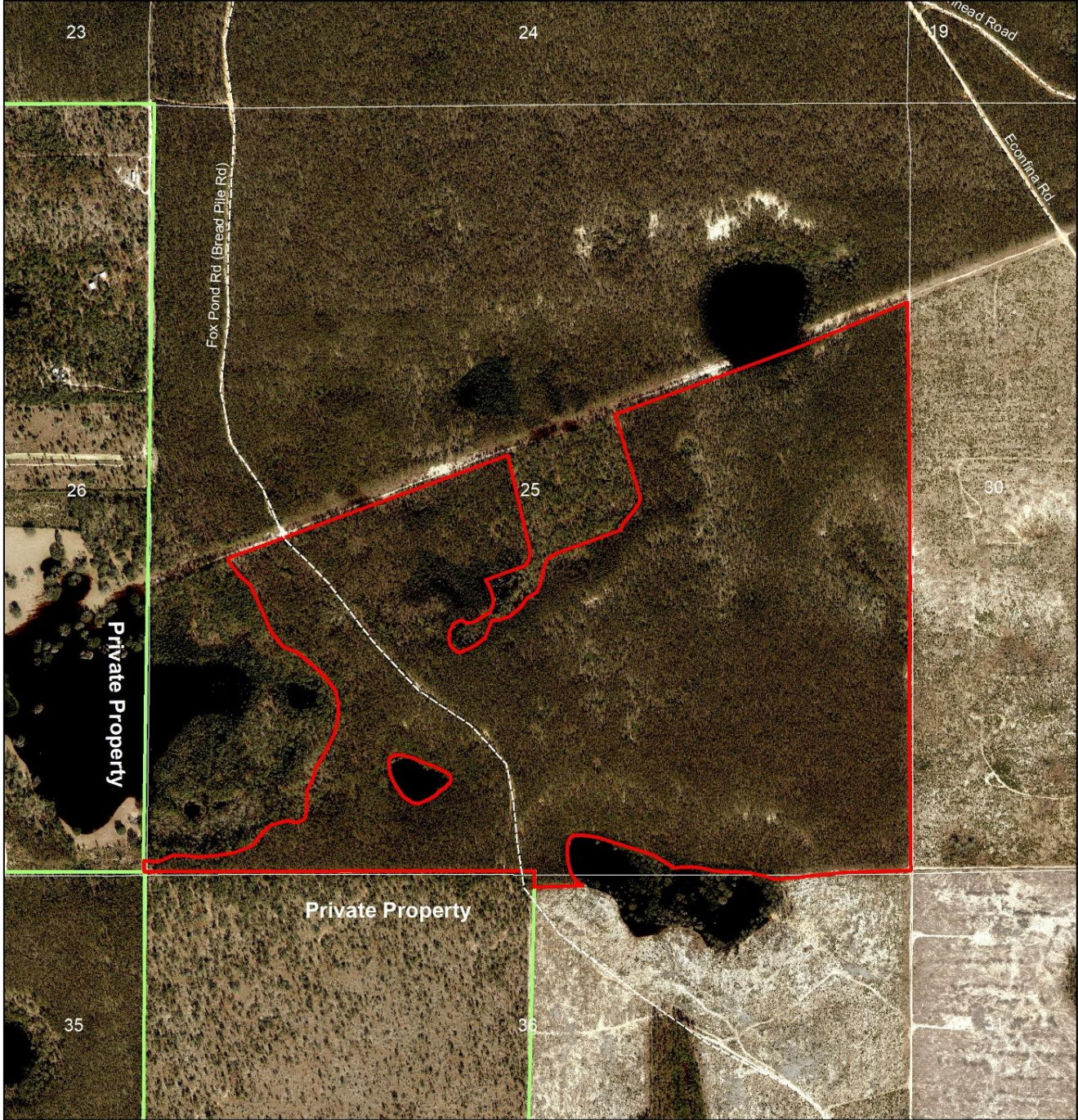


Exhibit Map 4



2021 Reforestation Project - Stand 4
Econfina Creek Water Management Area
Section 25, Township 1N, Range 14W
Washington County, Florida

Longleaf Reforestation Area @ 726 Trees Per Acre
6' X 10' Spacing
280 Acres

-  Reforestation Area
-  District Lands

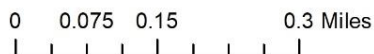
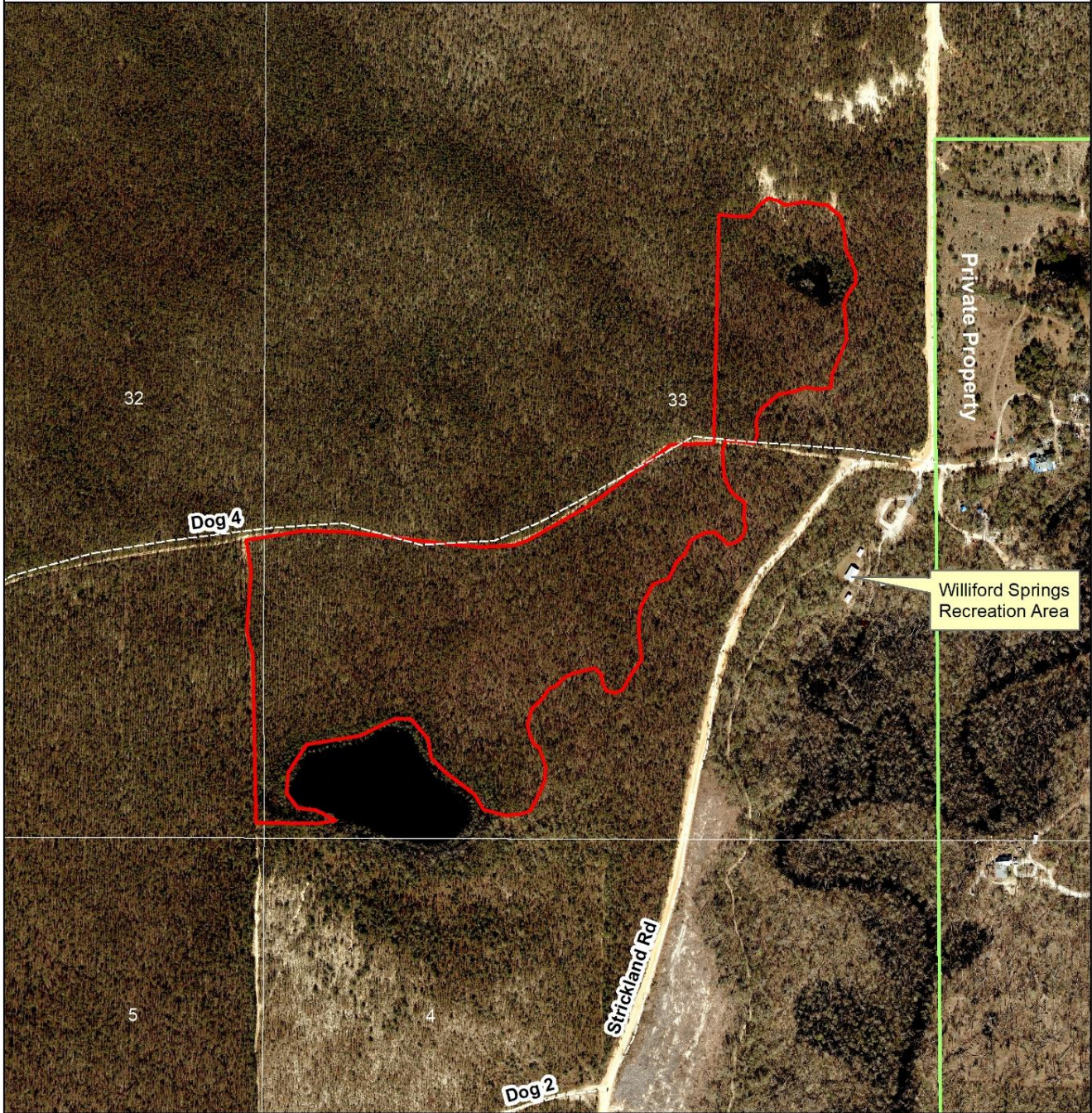


Exhibit Map 5



2021 Reforestation Project - Stand 5
Econfina Creek Water Management Area
Section 33, Township 1N, Range 13W
Washington County, Florida
Longleaf Reforestation Area @ 726 Trees per Acre
6' X 10' Spacing
42 Acres

-  Reforestation Area
-  District Lands

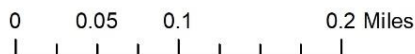


Exhibit Map 6



-  Reforestation Area
-  District Lands

2021 Reforestation Project - Stand 6
Econfina Creek] Water Management Area
Sections 32/5, T1N/1S, R13W
Bay and Washington Counties, Florida
Longleaf Reforestation @ 726 Trees Per Acre
6' X 10' Spacing
219 Acres

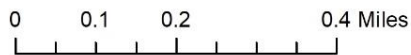
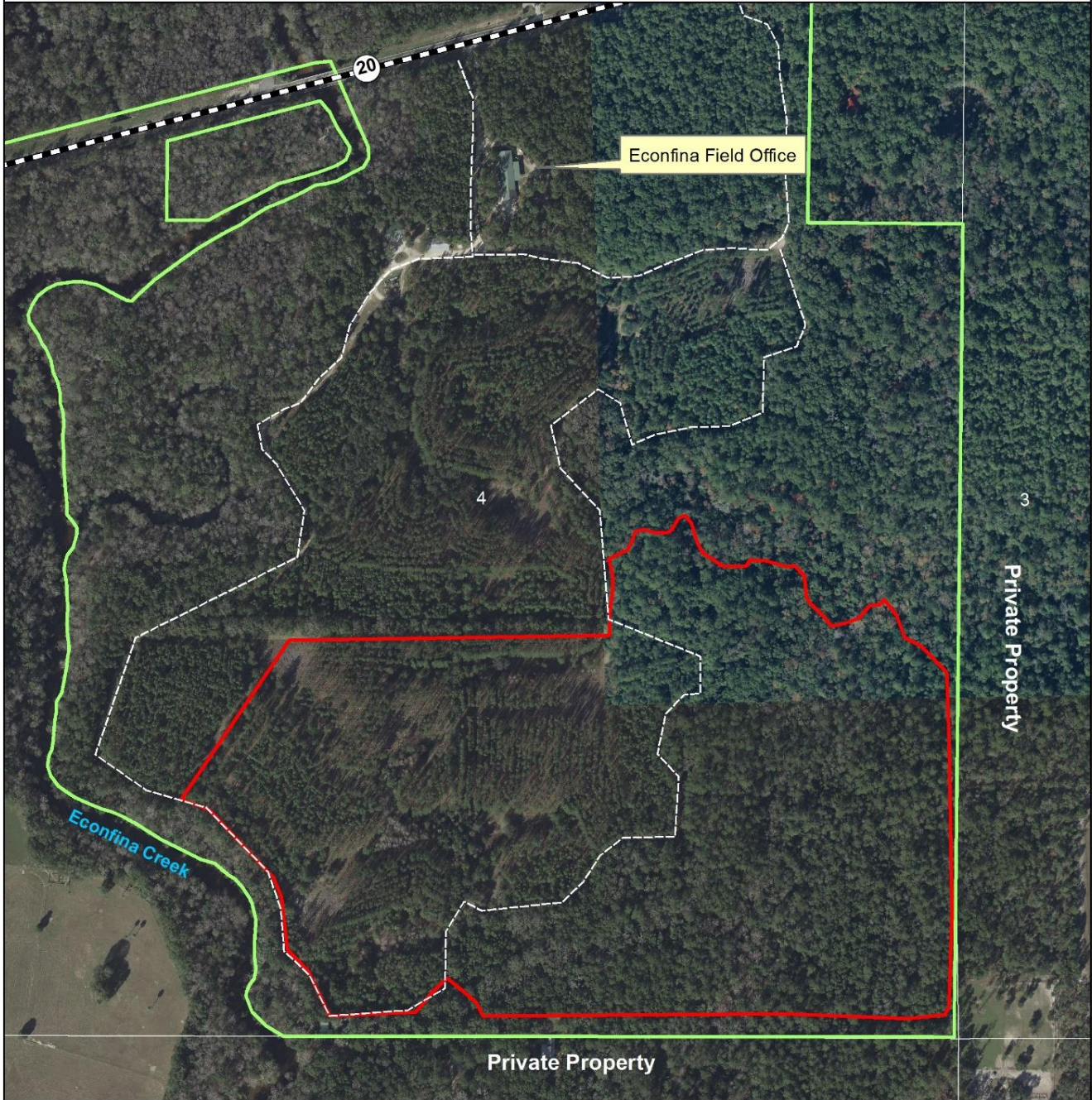


Exhibit Map 7



-  Reforestation Area
-  District Lands

2021 Reforestation Project - Stand 7
Econfina Creek Water Management Area
Section 4, Township 1S, Range 13W
Bay County, Florida
Longleaf Reforestation Area @ 726 Trees Per Acre
6' X 10' Spacing
68 Acres

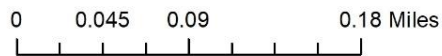


Exhibit Map 8



-  Reforestation Areas
-  District Lands

2021 Reforestation Project - Stand 8
Chipola River Water Management Area
Section 32, T2N, R9W
Calhoun County, Florida
Longleaf Reforestation @ 726 Trees Per Acre
6' X 10' Spacing
7 Acres

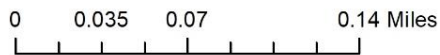
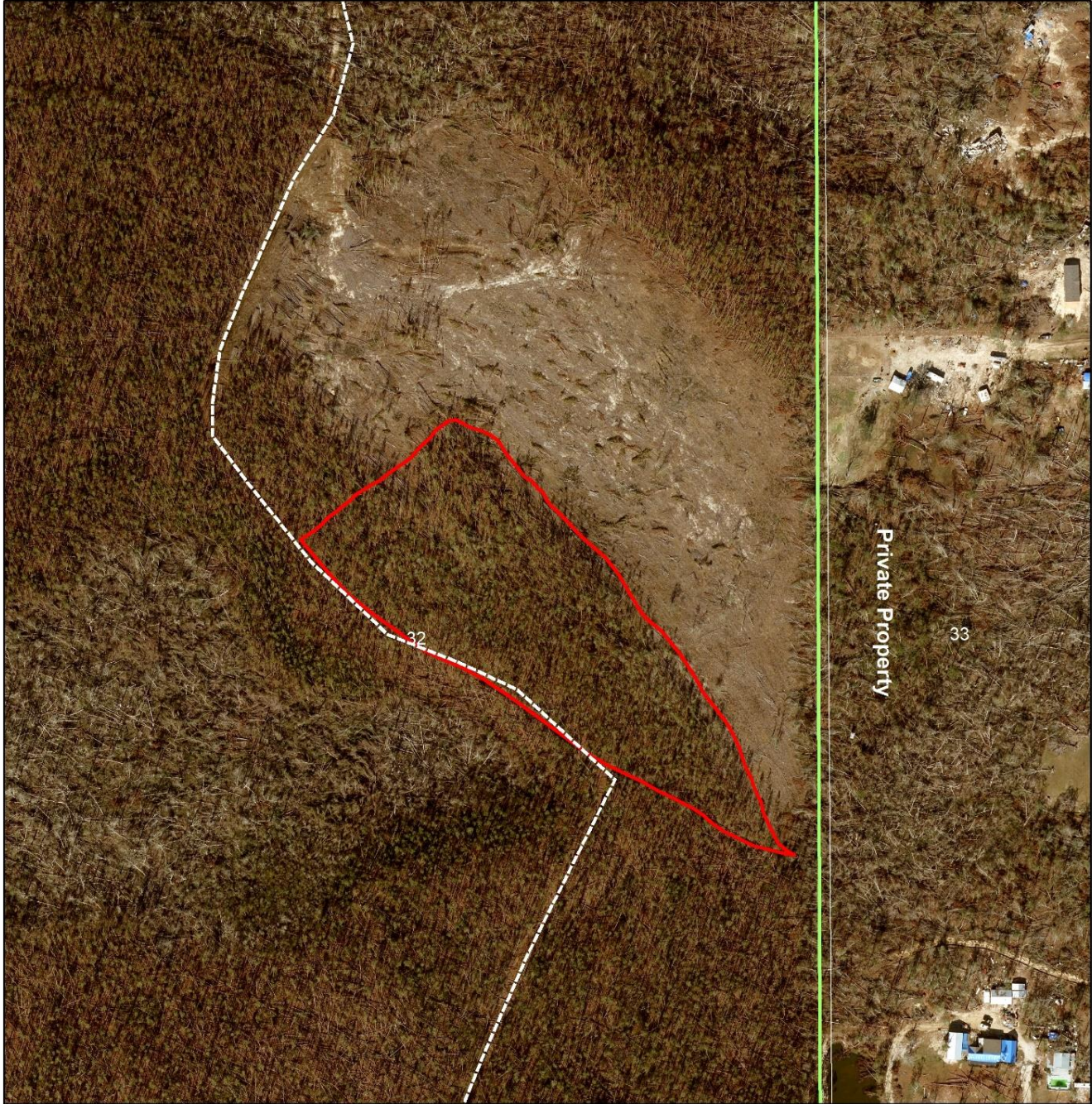


Exhibit Map 9



-  Reforestation Area
-  District Lands

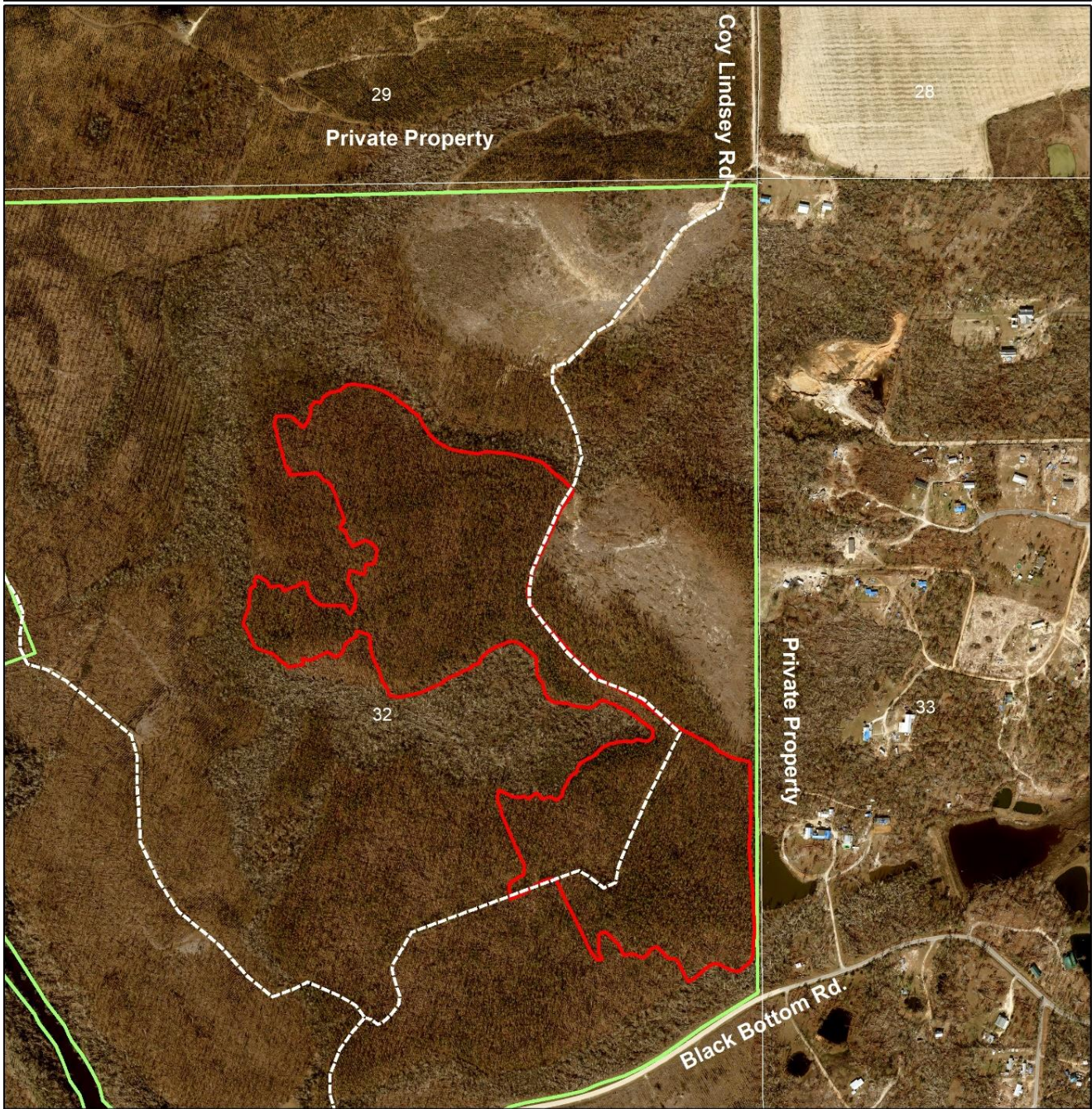
2021 Reforestation Project - Stand 9
Chipola River Water Management Area
Section 32, T2N, R9W
Calhoun County, Florida
Longleaf Reforestation @ 726 Trees Per Acre
6' X 10' Spacing
6 Acres



0 0.025 0.05 0.1 Miles



Exhibit Map 10



-  Reforestation Area
-  District Lands

2021 Reforestation Project - Stand 10
Chipola River Water Management Area
Section 32, T2N, R9W
Calhoun County, Florida
Slash Pine Reforestation @ 726 Trees Per Acre
6' X 10' Spacing
63 Acres

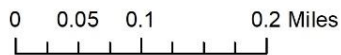
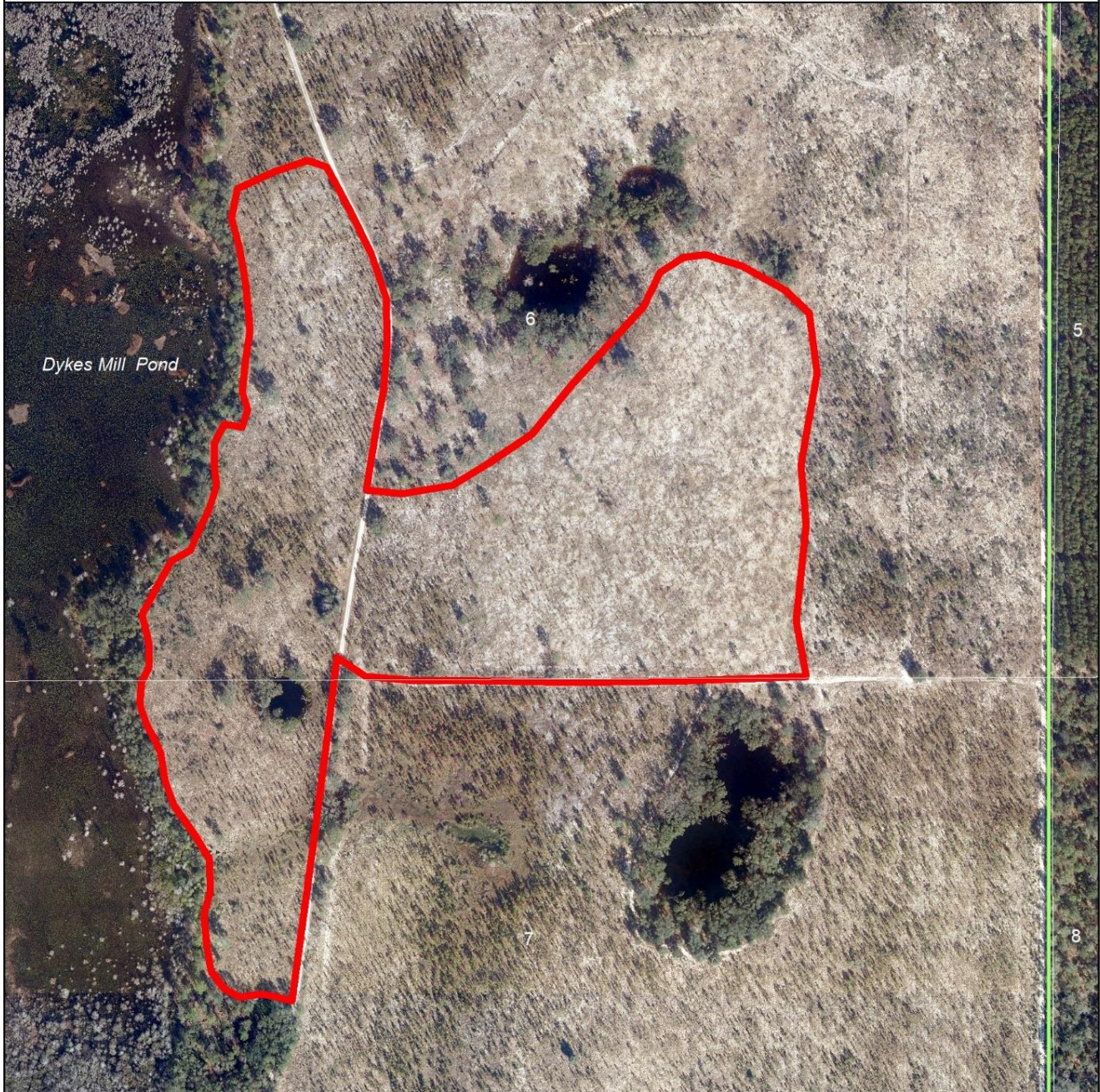


Exhibit Map 11

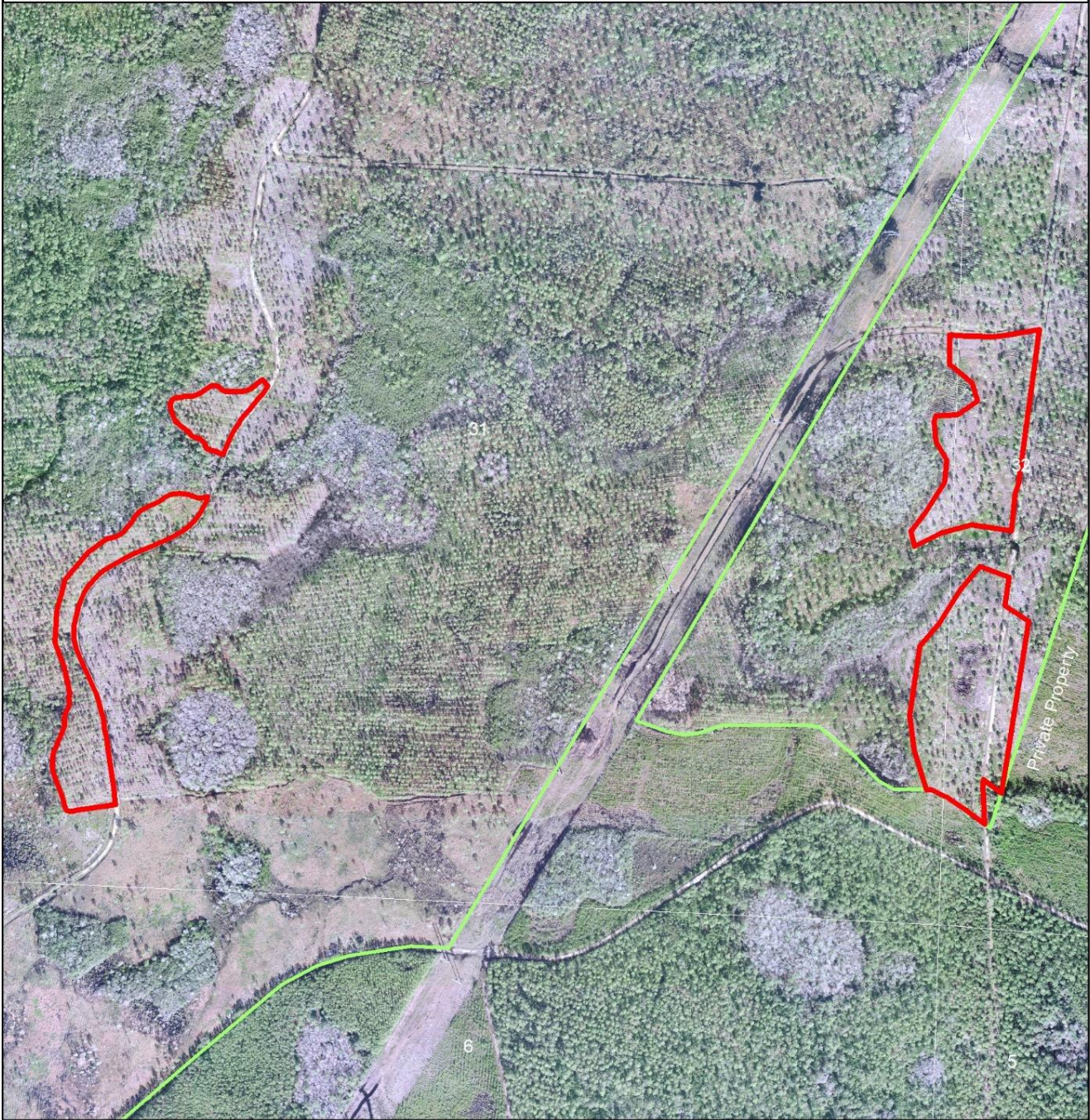


2021 Groundcover Restoration - Stand 11
Econfina Creek Water Management Area
Section 6&7, T1N, R14W
Washington County, Florida
Upland Grasses @ 1,210 Plants Per Acre
6' X 6' Spacing
30 Acres

-  Stand 11
-  District Lands



Exhibit Map 12



2021 Groundcover Restoration Project - Stand 12

Ward Creek West

Sections 31 & 32, T2S, R16W

Bay County, Florida

Wiregrass @ 4,840 Plants Per Acre

3' X 3' Spacing

21 Acres

-  Stand 12
-  District Lands



Exhibit Map 13



2021 Groundcover Restoration Project - Stand 13
Ward Creek West
Section 31, T2S, R16W
Bay County, Florida
Toothache Grass @ 1,210 Plants Per Acre
6' X 6' Spacing
6 Acres

-  Stand 13
-  District Lands



0 0.025 0.05 0.1 Miles



Exhibit Map 14



2021 Groundcover Restoration Project Stand 14
Perdido River WMA / Dutex
Section 36, T2S, R31W
Escambia County, Florida
Wiregrass @ 4,840 Plants Per Acre
3' X 3' Spacing
25 Acres

-  Stand 14
-  District Lands

