

FDOT DISTRICT-3 MITIGATION REVIEW TEAM MEETING MINUTES¹

MONDAY, OCTOBER 19, 2020

[Remote Meeting via Microsoft Teams]

Attendees	
Erica Brookman – FDOT (Chipley)	Jerrick Saquibal – NFWWMD (Midway)
Shannon Foor – FDOT (Chipley)	David Clayton – NFWWMD (Midway)
David Rydene – NMFS (St. Petersburg)	Robert Lide – NFWWMD (Midway)
Kristal Walsh – FWC (Milton)	Janet Strutzel – NFWWMD (Midway)
Bryan Phillips – FWC (Milton)	Terry Wells – NFWWMD (Midway)
Terry Gilbert – FWC (Tallahassee)	Ted Reese – NFWWMD (Midway)
Paul Thorpe – NFWWMD (Midway)	

An FDOT District-3 mitigation Review Team meeting was held remotely on Monday, October 19, 2020 (1:00 PM EDT) to discuss potential use of the Strauss Property as mitigation for wetland impacts associated with construction of the I-10/Antioch Interchange (FPID 407918-5) near Crestview (Yellow River watershed; Okaloosa County).²

I-10/Antioch Interchange (FPID 407918-5)

The I-10/Antioch Interchange (new interchange) will relieve traffic congestion at the I-10 / SR 85 interchange. Impacts to jurisdictional wetlands (Palustrine Forested) are estimated at 5.09 acres (3.80 acres direct; 1.29 acres secondary; 2.47 UMAM functional loss). Proposed mitigation is acquisition, enhancement, and management of the 128-acre Strauss Property. A mitigation synopsis is attached; a detailed mitigation plan addressing the 12 elements required by the USACE / 2008 EPA Final Mitigation Rule is under development.

The consensus of the Review Team members present at the October 19, 2020 meeting was that mitigation at the Strauss Property could appropriately offset the I-10/Antioch Interchange impacts.

¹ Meeting minutes compiled by NFWWMD staff.

² Federal and/or state permittees decide, through issuance of permit conditions, if proposed mitigation discussed at Review Team meetings will appropriately offset a specified impact. These meetings facilitate early consultation with commenting agencies in the development of mitigation. In addition to obtaining required permits, all mitigation developed by the NFWWMD for FDOT impacts must also be approved by the NFWWMD Governing Board designee (i.e., the NFWWMD Executive Director) and FDEP prior to implementation.

Mitigation Attachment

I-10 at Antioch Road (New Interchange) FDOT 407918-5

October 2020

Anticipated Wetland Impact

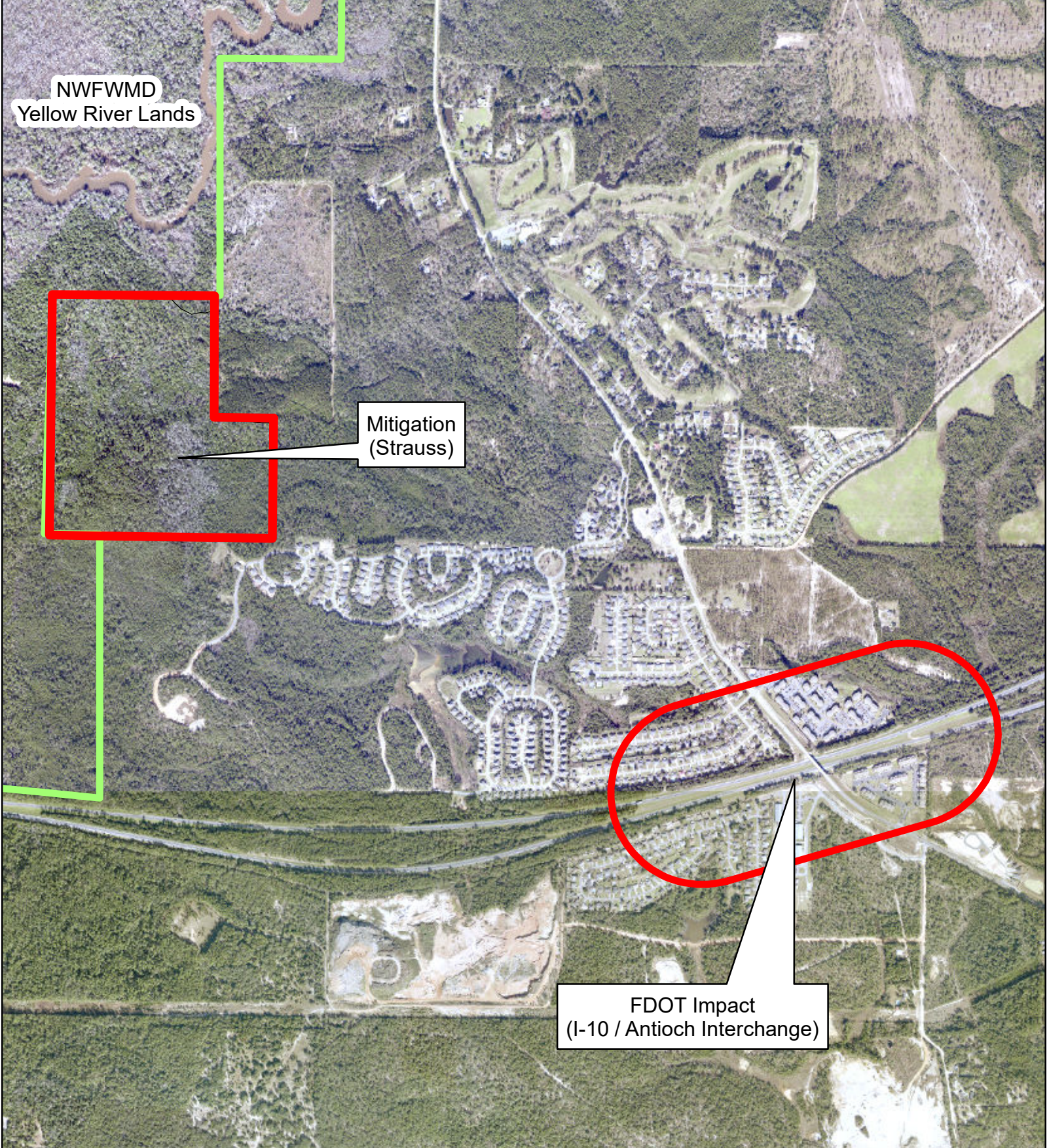
- 3.80 Acres Direct
- 1.29 Acres Secondary
- 5.09 Acres Total
- 2.47 UMAM Loss
- Type of Wetlands
 - FLUCCS 630 – Wetland Forested Mixed
 - FLUCCS 617 – Mixed Wetland Hardwoods
- Pensacola Bay System Watershed (Yellow River Basin)

Proposed Mitigation

- Strauss Property (128 Acres)
- 125 Acres Forested Wetlands; 3 Acres Uplands (per NWI Mapping)
- Pensacola Bay System Watershed (Yellow River Basin)
- Located Approximately 1½ Miles from Impact
- Contiguous with Existing NFWFMD Yellow River WMA Lands
- Willing/Motivated Seller

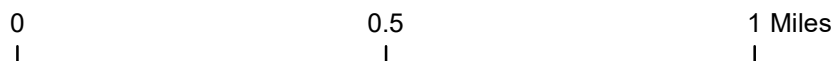
Scope

This project would offset impacts to jurisdictional wetlands associated with the new I-10/Antioch Interchange in Okaloosa County near Crestview (estimated as a 2.47 UMAM functional loss) by acquiring, preserving, and managing for ecological integrity approximately 128 acres of mostly forested wetlands adjacent to existing NFWFMD lands along the Yellow River. Both the impact and proposed mitigation areas are in the Yellow River basin approximately 1½ miles apart. Management activities may include prescribed fire, control of exotics and invasives, possible hydrologic enhancements and erosion stabilization. The property would become part of the Yellow River WMA and managed in perpetuity as conservation lands by the NFWFMD.




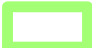
I-10 / Antioch Interchange and Strauss Mitigation Area
2016 DOQ

 NFWWMD Lands



NWFWMD Yellow River Lands

NWFWMD
Yellow River Lands

-  Strauss (128 Acres)
-  NWFWMD Lands

Strauss Mitigation Area
Yellow River Water Management Area
Okaloosa County, Florida
2016 DOQ



0 250 500 Feet