



Douglas E. Barr  
Executive Director

## Northwest Florida Water Management District

---

81 Water Management Drive, Havana, Florida 32333-4712  
(U.S. Highway 90, 10 miles west of Tallahassee)

(850) 539-5999 • (Fax) 539-2777

December 1, 2006

Ms. Victoria Tauxe  
DEP-OSLER-MS 2500  
2600 Blair Stone Rd  
Tallahassee, FL 32399-2400

Re: Progress Report 3

Dear Ms. Tauxe,

Please accept this submittal as the third progress report for the SHLMB. Since the last progress report, the main roads around Deep Edge and adjacent to the Green Ponds were improved to allow heavy equipment to travel to the work sites. This work continued into July and a limestone cap was placed over selected portions of the roadway. An eroding portion of road adjacent to Dykes Mill Pond was abandoned and restored in late June. Construction of three bridges and two culverts was initiated in July and is ongoing. Prior to the initiation of work, silt screens were installed and have been inspected regularly. No turbidity has been observed. Additional oak and sand pine removal was conducted on 325 acres in Management Unit 10 throughout September. Oblique aerials were taken for the SHLMB on October 23, 2006. The photographs are being processed now and will be included in the annual report. Fall monitoring for the annual report was conducted in October as well as the annual inspection for nuisance and exotic species.

**Please provide a brief description of permit requirements met and extent of work completed the previous report or since the permit was issued:**

1. Road work was completed on the main loop from the entrance to Deep Edge Pond and eastward to Dykes Mill Pond and Greenhead Branch, and from Greenhead Branch back to the entrance road (Figure 10a). Selected portions of the road were capped with limestone. The roadwork was initiated on April 24<sup>th</sup> and was completed in July.
2. In June, a portion of old road adjacent to Dykes Mill pond was abandoned. This road had extensive erosion. The eroded road was restored by the creation of a

WAYNE BODIE  
Chair  
DeFuniak Springs

JOYCE ESTES  
Vice Chair  
Eastpoint

SHARON T. GASKIN  
Secretary/Treasurer  
Wewahitchka

PETER ANTONACCI  
Tallahassee

STEPHANIE H. BLOYD  
Panama City Beach

PHILIP K. McMILLAN  
Blountstown

JERRY PATE  
Pensacola

SHARON PINKERTON  
Pensacola

GEORGE ROBERTS  
Panama City

series of shallow basins. The area was then planted with annual rye grass. Photos of the restored roadway are included in Appendix 1.

3. Construction on three bridges and two culverts was initiated in July and is ongoing (Appendix 2). Silt fences and turbidity barriers were installed and have been inspected regularly. Due to the summer drought, water levels at the bridge and culvert sites for all but Greenhead Branch have been well below the construction areas, often 25 to 30' below the work area. Greenhead branch has had minimal flow throughout the summer. No turbid discharge has been observed.
4. Surveys for feral hogs and beavers continued through the summer at the SHLMB. No additional sightings or disturbances have been observed.
5. During the May site inspection, torpedo grass (*Panicum repens*) was observed adjacent to the boat ramps of two of the green ponds (Figure 10b). The torpedo grass was subsequently sprayed by DEP employees from the Bureau of Invasive Plant Management on July 20<sup>th</sup> 2006. Follow up visits indicate an excellent kill with little to no surviving torpedo grass. Future site inspections will continue to monitor these areas. Photos of the treated areas are included in the Appendix 3. Several additional patches of torpedo grass and three sapling Chinese tallow (*Sapium sebiferum*) were observed during the annual inspection for nuisance species in October. Torpedo grass was observed at the boat ramp at Garret pond, along a wet dirt road adjacent to dry pond, and on the banks of one of the Green ponds (Figure 10b). The coverage of the torpedo grass was all minimal, small patches approximately 15' in diameter. The torpedo grass will be treated in February of 2007. In addition, three Chinese tallow seedlings were observed on the roadside adjacent to the green ponds (Figure 10b). The plants were hand pulled when they were observed.
6. In accordance with Specific Condition 8, security and law enforcement continued at the bank throughout the summer. No violations were observed on the bank.
7. During September, hardwood and sand pines were cut and the stems treated with herbicide for 325 acres of Management Unit 10 (Exhibit Map 8) (Appendix 4). Wire grass cover within these areas had greatly increased following the initial burns and it was felt that these areas could be restored to a diverse sandhill community if the invading sand pines and hardwoods were removed. These areas will be burned during the winter of 2007/2008.
8. Oblique aerials were taken for the SHLMB on October 23, 2006. The photographs are being processed now and will be included in the annual report.
9. Fall monitoring for the annual report was conducted throughout October.

10. Monthly site inspections were conducted for the SHLMB from June through November (Appendix 5).
11. The 2005-2006 Annual report by the Florida Fish and Conservation Commission was completed in October and will be included in the annual report.

**Restoration activities anticipated within the next 6 months:**

1. Continued surveys for feral hogs will continue throughout the winter at the SHLMB.
2. In accordance with Specific Condition 11 and Attachment E, winter burns will be conducted (Exhibit Map 1). Updated burn maps will be included in subsequent progress reports and the annual report.
3. In accordance with Specific condition 12, hydrologic improvements will continue over the next 6 months. It is expected that the bridge and culverts will be completed by February of 2007. Construction on the dam at Black Pond is expected to start in March and the road removal from the wetlands should begin in May.
4. The harvesting of sand pine stands and thinning of planted slash pines should begin in April of 2007.
5. Roller chopping or equivalent in the wet pine flatwoods should begin in late May of 2007.

**Please provide copies of the permit drawings indicating areas where work has been completed:**

To date no work has been completed at the bank referencing permit drawings.

**Please provide a brief description of problems encountered and solutions undertaken:**

Since the last progress report, there have been no substantial problems encountered at the SHLMB.

Thank you for your consideration of this submittal. If you have any question or comments please feel free to contact me at 850-539-5999.

Sincerely,



David Clayton  
QMS

Enclosures:

Figure 10a – Road Improvement

Figure 10b – Nuisance and Exotic Species Tracking

Exhibit Map 8 – Hardwood and Sand Pine Tree Eradication

Exhibit Map 1 – Dormant Season Prescribed Burns

Appendix 1: Photos of erosion control basins adjacent to Dykes Mill Pond

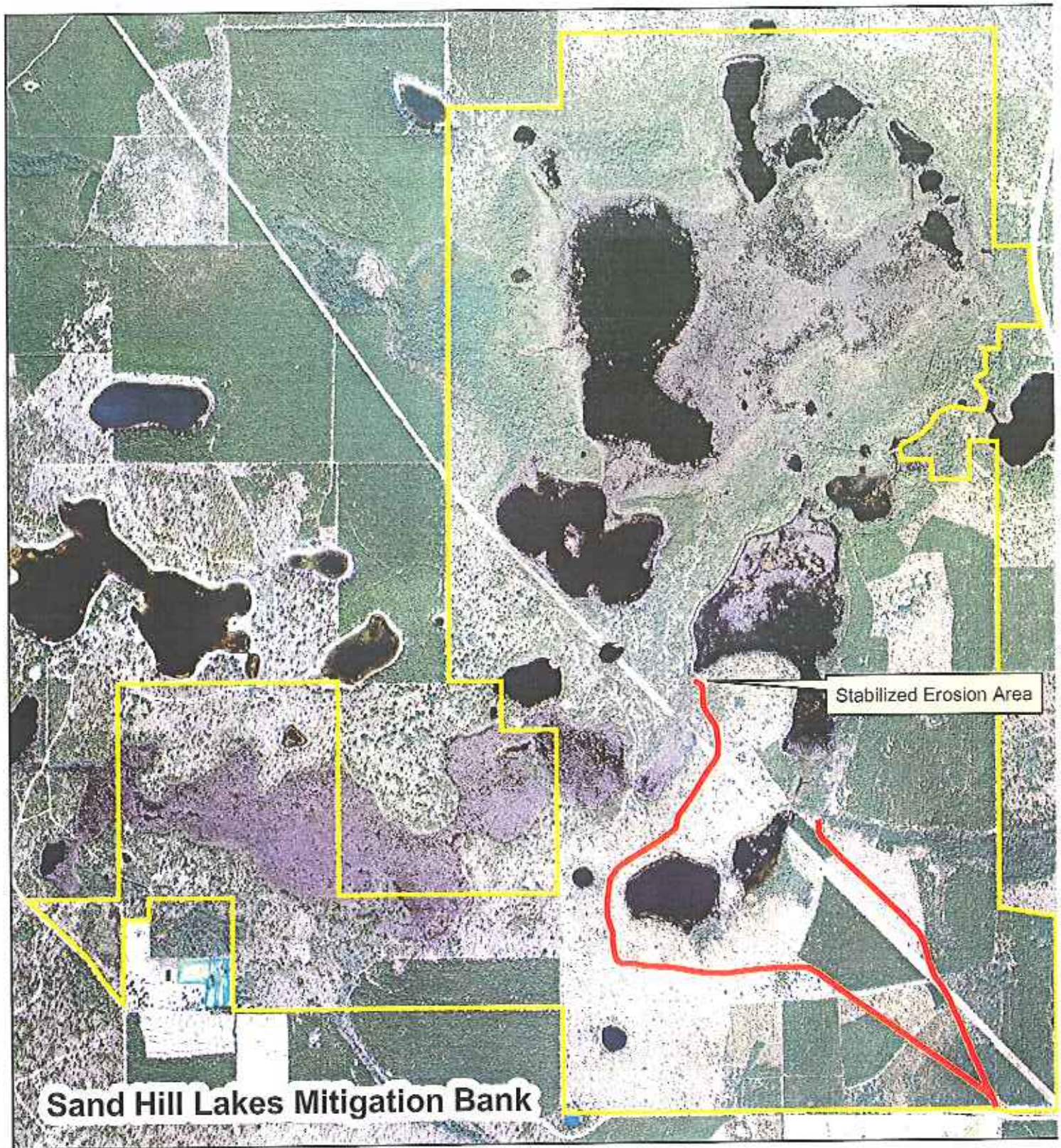
Appendix 2: Photos of bridge construction and silt fences located at Greenhead Branch and Pine Log Creek

Appendix 3: Photos of treated torpedo grass at Green Pond

Appendix 4: Photos of thinned sand pine and oak trees in Management Unit 10

Appendix 5: Monthly Site Inspections

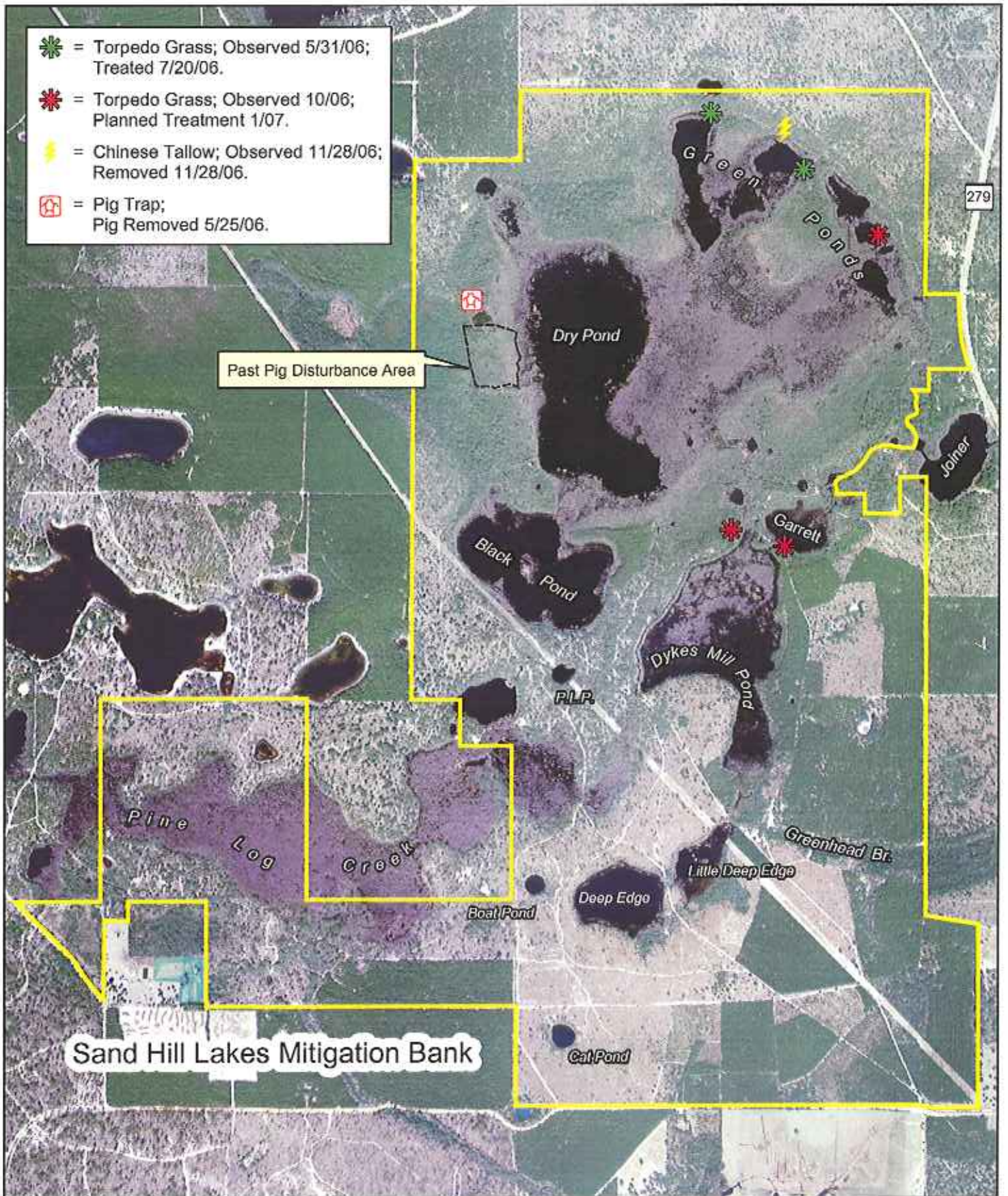
Figure 10a - Road Improvements



— Road Improvements



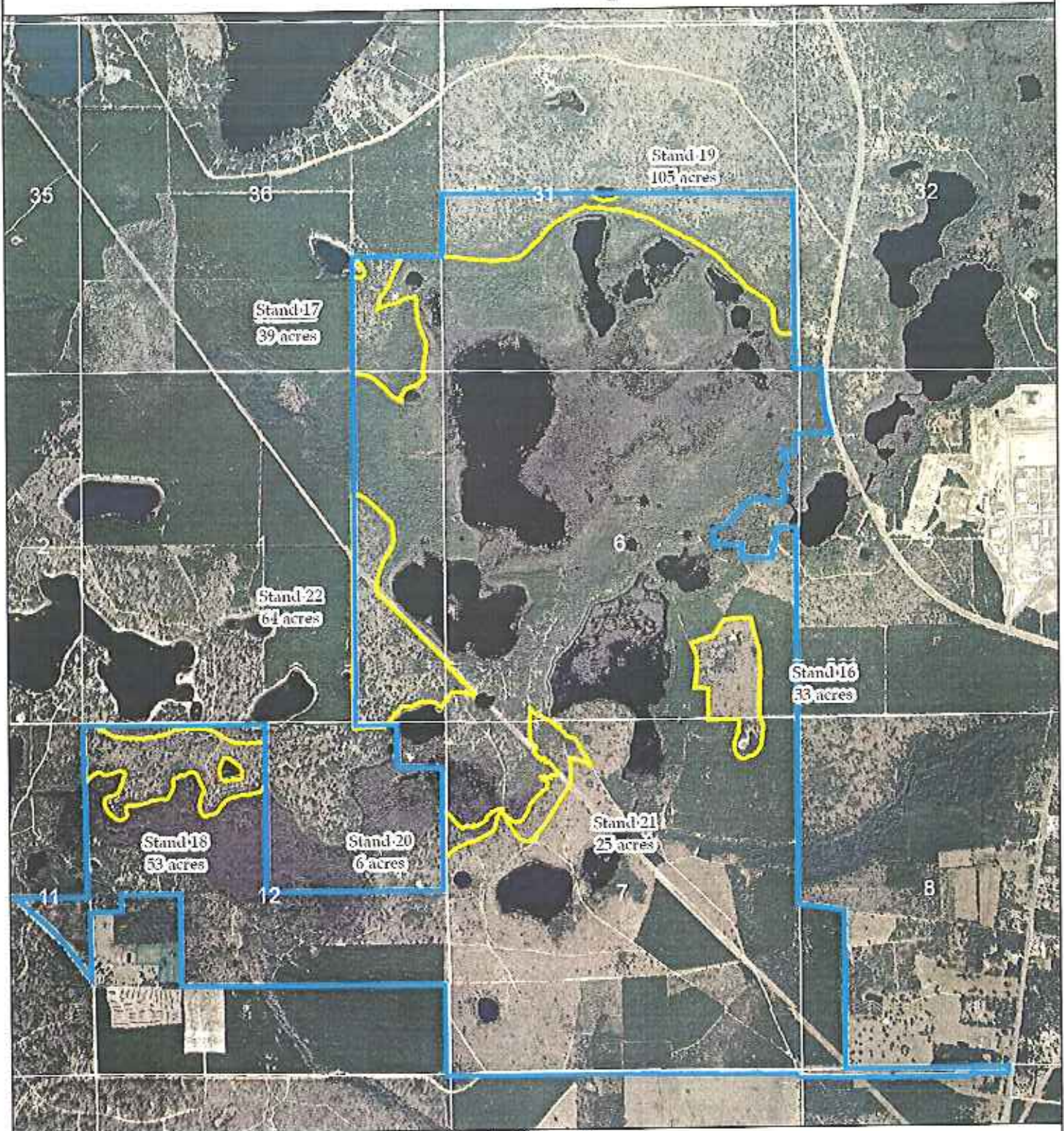
Figure 10b - Nuisance and Exotic Species Tracking



0 0.5 1 Miles

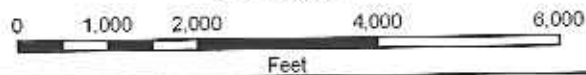


# Exhibit Map 8



Stands 16 thru 22  
 Sand Hill Lakes Mitigation Bank Tract  
 Washington County  
 Sections 31 & 36, T2N, R15W and Sections 1,6,7 & 12, T1N, R15W  
 Hardwood and Sand Pine Tree Eradication  
 325 Acres





- Stands 16 thru 22  
Hardwood and Sand Pine Tree Eradication
- District Ownership

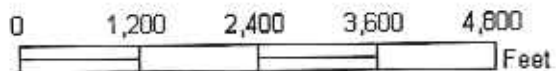


# Exhibit Map 1



*Sand Hill Lakes Mitigation Bank  
Econfina Creek Water Management Area  
Washington County  
Sections 6 & 7; T1N; R14W &  
Section 11; T1N; R15W  
Dormant Season Prescribed Burns  
287 Acres*

- Prescribed Burn Areas
-  Prescribed Burn Areas
-  Prescribed Burn Area
-  Prescribed Burn Area
-  District Boundary Line





## Appendix 1: Photos of erosion control basins adjacent to Dykes Mill Pond

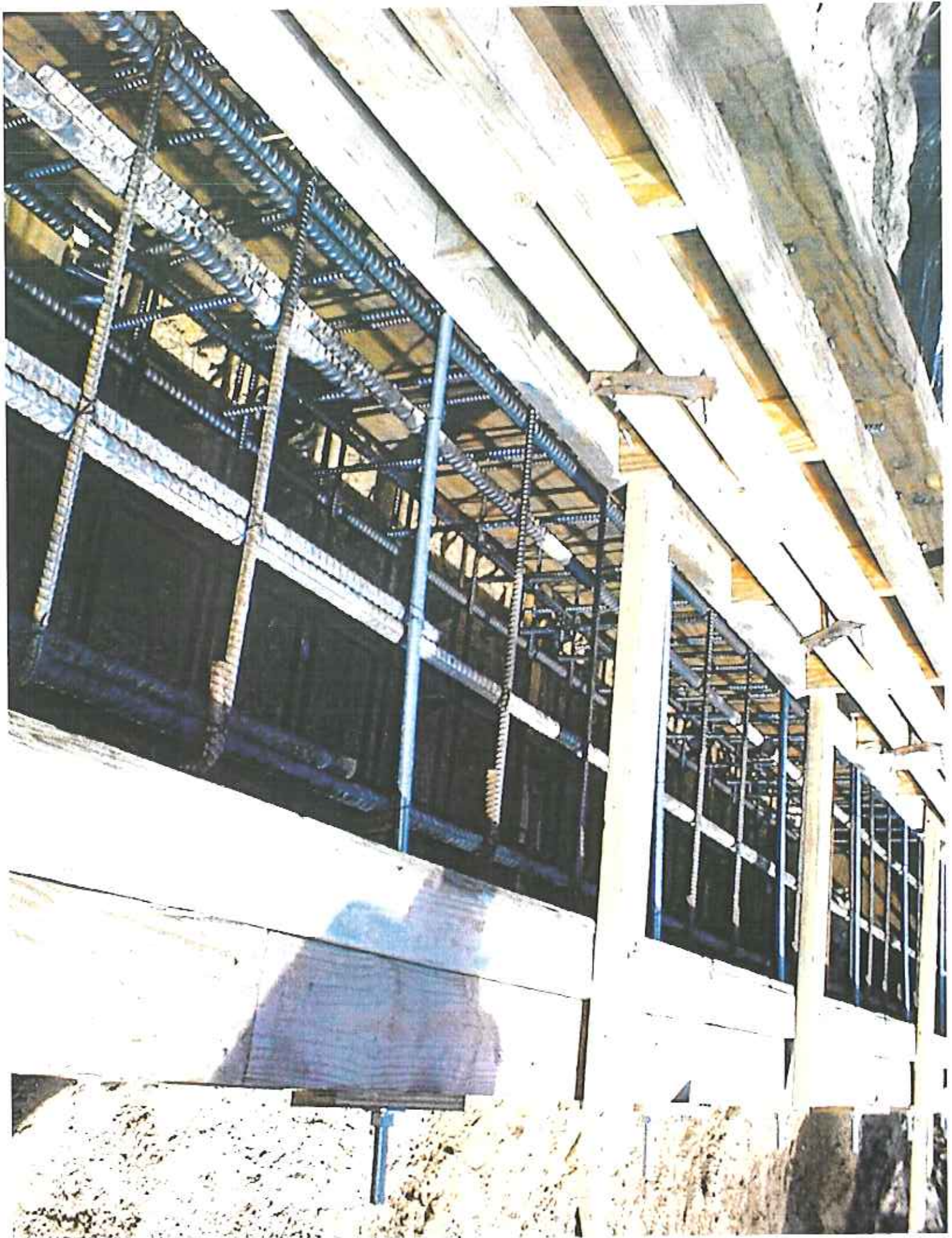




Appendix 2: Photos of bridge construction and Greenhead branch and silt fences located at Greenhead Branch and Pine Log Creek















### Appendix 3: Photos of treated torpedo grass at Green Pond





Appendix 4: Photos of thinned sand pine and oak trees in Management  
Unit 10







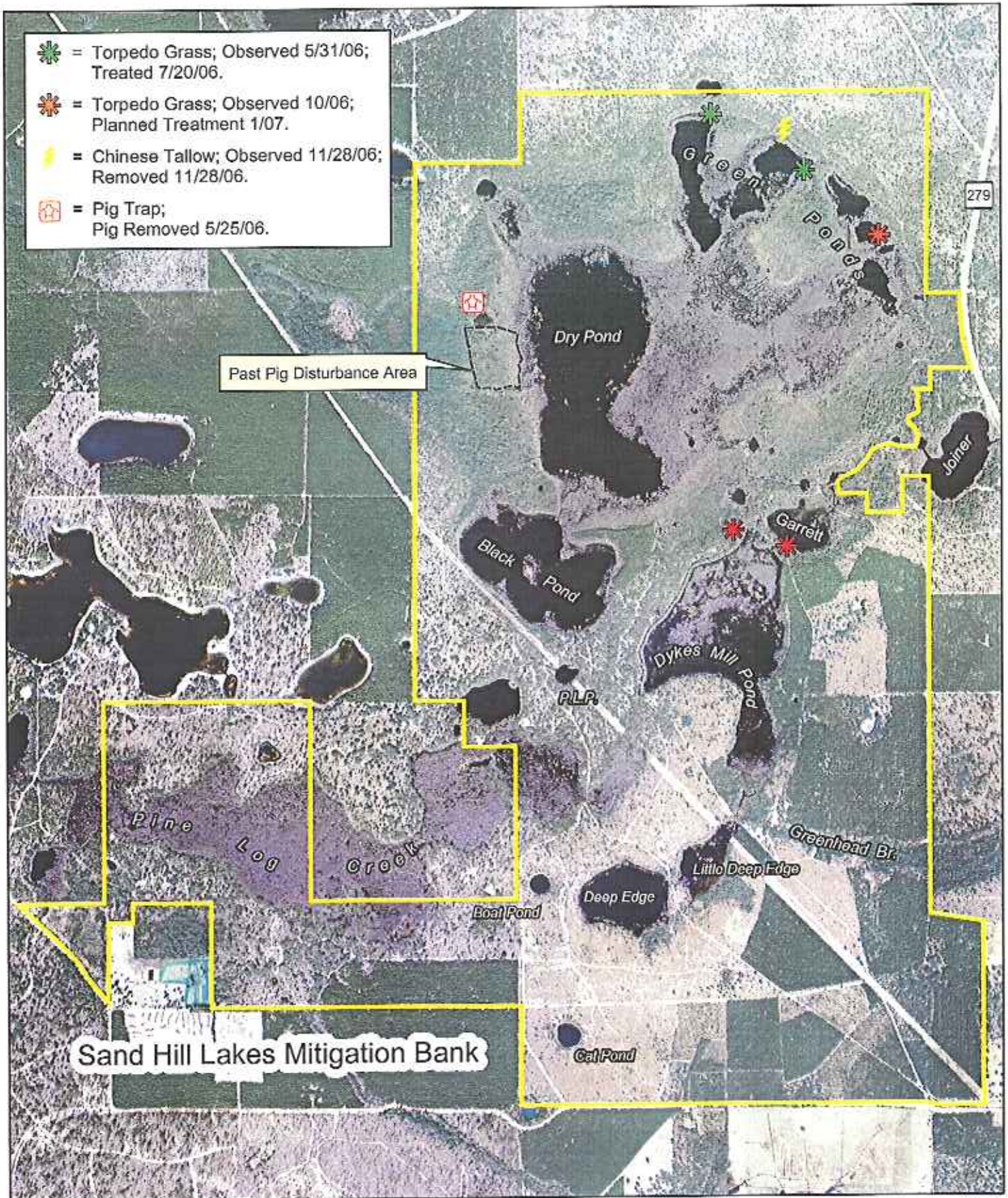








Figure 10b - Nuisance and Exotic Species Tracking



## Appendix 5: Monthly Site Inspections

**Site Inspection Field Form**

Page 1 of 1

Name(s) of Data Collectors: David Clayton

Date: 6/27/06

Time: 9:00

On a monthly basis, the site will be inspected as follows:

Perimeter checked for signs of trespassing, fencing and signage integrity and infestation by exotic or nuisance vegetation;

Comments:

Internal Roads (Both public and maintenance) checked for signs of dumping or trespassing, erosion, bridges and road integrity, and exotic or nuisance species infestations;

Comments: No dumping, erosion or trespass.

All construction areas checked for stabilization and re-vegetation, structure, operation, and integrity;

Comments: None

Powerline checked for trespassing or disturbance that may affect the integrity of the bank;

Comments: None

At least 3 polygons of each UMAM community evaluated or for those UMAM communities with less than three polygons, each UMAM polygon evaluated.

Comments:

Found *Lyonia mariana* (Big flowered Fetter Bush) near Black Pond. Plants in flower include red root, St. John's wort, pale meadow beauty, bog buttons, water lilies, spatterdock, *Bitens mitis*, club moss.

**Wildlife Observations:****Greenhead Branch:** southern cricket frog**Black Pond:** southern cricket frog, wood ducks, two osprey nests, cardinal, titmouse, mocking bird, redwing black bird, snowy egret, squirrel**Sandhill near Boat Pond and Deep Edge:** deer, squirrel, rufous-sided tohee, crow, Eastern blue bird**Dykes Mill Pond:** wood duck, pickerel frog, southern cricket frog, great blue heron**Little Deep Edge: Rookery:** with about 30 pairs: anhinga, little blue heron, cattle egret, snowy egret, bull frog, crow, red winged black bird (nesting) grackle (nesting) most chicks are fledged and starting to fly**Dry Pond:** wood ducks, white ibis, deer tracks, southern cricket frog**Green ponds:** alligator, little blue heron, white ibis, six-lined lizard

**Site Inspection Field Form**

Page 1 of 1

Name(s) of Data Collectors: David Clayton

Date: 7/19/06

Time: 10:00

On a monthly basis, the site will be inspected as follows:

Perimeter checked for signs of trespassing, fencing and signage integrity and infestation by exotic or nuisance vegetation;

Comments:

Internal Roads (Both public and maintenance) checked for signs of dumping or trespassing, erosion, bridges and road integrity, and exotic or nuisance species infestations;

Comments: No dumping, erosion or trespass.

All construction areas checked for stabilization and re-vegetation, structure, operation, and integrity;

Comments: None

Powerline checked for trespassing or disturbance that may affect the integrity of the bank;

Comments: None

At least 3 polygons of each UMAM community evaluated or for those UMAM communities with less than three polygons, each UMAM polygon evaluated.

Comments:

Onsite twice during July...July 11, 2006 for a construction meeting concerning bridge and culvert construction. Present were CARR engineering...will take 260 days to complete projects. Will start with Dykes Mill Pond bridge. Will work both areas at the same time. Also met Matt Phillips onsite July 19<sup>th</sup>, 2006 to conduct nuisance species eradication. Torpedo grass was treated with herbicide at the Dry Pond boat launch and also at the Green Ponds boat ramp. The site will be inspected in the next three weeks for kill rate and any surviving torpedo grass will be sprayed in August.

**Wildlife Observations:****Greenhead Branch:** southern cricket frog**Black Pond:** southern cricket frog, wood ducks, osprey, cardinal, redwing black bird, snowy egret, squirrel**Sandhill near Boat Pond and Deep Edge:** squirrel**Dykes Mill Pond:** wood duck, pickerel frog, southern cricket frog, great blue heron**Little Deep Edge:** Rookery: largely abandoned....a few cattle egrets remain....chicks are fledged and staying around the pond**Dry Pond:** wood ducks, white ibis, deer tracks, southern cricket frog**Green ponds:** alligator, little blue heron



**Site Inspection Field Form**

Page 1 of 1

Name(s) of Data Collectors: David Clayton

Date: 8/31/06

Time: 10:00

On a monthly basis, the site will be inspected as follows:

Perimeter checked for signs of trespassing, fencing and signage integrity and infestation by exotic or nuisance vegetation;

Comments: None

Internal Roads (Both public and maintenance) checked for signs of dumping or trespassing, erosion, bridges and road integrity, and exotic or nuisance species infestations;

Comments: No dumping, erosion or trespass.

All construction areas checked for stabilization and re-vegetation, structure, operation, and integrity;

Comments: Construction has been initiated for all bridge and culvert replacements. All silt fences were checked. Water level is well below each construction zone and all areas were completely dry.

Powerline checked for trespassing or disturbance that may affect the integrity of the bank;

Comments: None

At least 3 polygons of each UMAM community evaluated or for those UMAM communities with less than three polygons, each UMAM polygon evaluated.

Comments:

Construction onsite has been initiated. All the areas where bridges or culverts to be replaced has been initiated. Inspected each silt fence for proper installation at each location. The old dam at Dykes Mill pond has been removed. Took a lot of construction photos. Piling have been delivered to each of the bridge sites. Deer population study initiated by Fish and Game Commission. Checked for survival of Torpedo grass following herbicide....a very good kill, little if any remains alive. Very Hot, not much wildlife observed.

**Wildlife Observations:**

**Greenhead Branch:** found a number of orange fringeless Orchid in fruit.

**Powerline Pond:** Water levels down severely....small 3' alligator in power line pond, plenty of fish and some big bass there.

**Site Inspection Field Form**

Page 1 of 1

Name(s) of Data Collectors: David Clayton

Date: 9/20/06

Time: 9:00 am

On a monthly basis, the site will be inspected as follows:

Perimeter checked for signs of trespassing, fencing and signage integrity and infestation by exotic or nuisance vegetation;

Comments: None

Internal Roads (Both public and maintenance) checked for signs of dumping or trespassing, erosion, bridges and road integrity, and exotic or nuisance species infestations;

Comments: No dumping, erosion or trespass.

All construction areas checked for stabilization and re-vegetation, structure, operation, and integrity;

Comments: Construction has been initiated for all bridge and culvert replacements. All silt fences were checked. Water level is well below each construction zone and all areas were completely dry.

Powerline checked for trespassing or disturbance that may affect the integrity of the bank;

Comments: None

At least 3 polygons of each UMAM community evaluated or for those UMAM communities with less than three polygons, each UMAM polygon evaluated.

Comments:

Construction onsite is continues for the bridges and culverts. The silt fences were inspected. Some silt fences had been damaged, and were subsequently repaired by the contractor. Water levels on the entire site down severely due to drought. Water levels 15-20' below average water levels for the ponds. Many of the green ponds are dry now.

**Wildlife Observations: Blue Jay, tufted titmouse, fish crow, osprey**

**Site Inspection Field Form**

Page 1 of 1

Name(s) of Data Collectors: David Clayton

Date: 10/11/06

Time: 11:00 am

On a monthly basis, the site will be inspected as follows:

Perimeter checked for signs of trespassing, fencing and signage integrity and infestation by exotic or nuisance vegetation;

Comments: None

Internal Roads (Both public and maintenance) checked for signs of dumping or trespassing, erosion, bridges and road integrity, and exotic or nuisance species infestations;

Comments: During the annual monitoring for the SHLMB, the annual nuisance and exotic species monitoring was conducted. The previous patches of torpedo grass observed at the green ponds was treated on 7/20 and destroyed. Three additional infestations of torpedo grass (*Panicum repens*) were observed during the annual exotic species monitoring. A small patch of approximately 10' in diameter was observed on the edge of a green pond, the second patch of approximately 20' in diameter was observed at the old boat ramp to Garret pond and a third patch approximately 25' in size was located along a wet roadway adjacent to dry pond. A map has been generated and will be included in progress report. In addition, three seedling popcorn trees (*Sapium sebiferum*) were observed along the road on adjacent to the green ponds. The seedlings were destroyed.

All construction areas checked for stabilization and re-vegetation, structure, operation, and integrity;

Comments: Construction has been initiated for all bridge and culvert replacements. All silt fences were checked. Water level is well below each construction zone and all areas were completely dry.

Powerline checked for trespassing or disturbance that may affect the integrity of the bank;

Comments: None

At least 3 polygons of each UMAM community evaluated or for those UMAM communities with less than three polygons, each UMAM polygon evaluated.

Comments:

Construction onsite is continues for the bridges and culverts. The silt fences were inspected. All silt fences were in good repair. Water levels are 20' or more lower than the construction areas for all but Greenhead branch. Greenhead branch and Deep Edge continue to have normal flows or water levels. Water levels continue to be down for the rest of the site. Many of the green ponds and other wetlands are dry. Power line pond is down by 30' or more. Cat and Boat pond are near record lows, but still have a fair amount of water. Fall flowering has started. Buckwheat and Liatris as well as scratch daisy and shiners have all started blooming. Fall sampling has also been initiated onsite.

**Wildlife Observations:** Blue jay, tufted titmouse, red bellied woodpecker, mocking bird, osprey, squirrel, deer and raccoon tracks.

**Site Inspection Field Form**

Page 1 of 1

Name(s) of Data Collectors: David Clayton

Date: 11/8/06

Time: 7:45 am

On a monthly basis, the site will be inspected as follows:

Perimeter checked for signs of trespassing, fencing and signage integrity and infestation by exotic or nuisance vegetation;

Comments: None

Internal Roads (Both public and maintenance) checked for signs of dumping or trespassing, erosion, bridges and road integrity, and exotic or nuisance species infestations;

Comments: No dumping, erosion or trespass.

All construction areas checked for stabilization and re-vegetation, structure, operation, and integrity;

Comments: Construction has been initiated for all bridge and culvert replacements. All silt fences were checked. Water level is well below each construction zone and all areas were completely dry.

Powerline checked for trespassing or disturbance that may affect the integrity of the bank;

Comments: None

At least 3 polygons of each UMAM community evaluated or for those UMAM communities with less than three polygons, each UMAM polygon evaluated.

Comments:

Construction onsite is continues for the bridges and culverts. The silt fences were inspected. All silt fences were in good repair. Water levels are 30' or more lower than the construction areas for all but Greenhead branch. Greenhead branch and Deep Edge continue to have normal flows or water levels. Water levels continue to be down for the rest of the site. Fall flowering has peaked for the site and starting to wind down. Buckwheat is finished and so is most of the goldenrod...the woody goldenrod however is peaking now. Fall sampling has been completed except for re-photographing some transects that did not turn out.

**Wildlife Observations:** Blue jay, tufted titmouse, red bellied woodpecker, cat bird, deer and raccoon tracks, alligator.

**Site Inspection Field Form****Page 1 of 1**

Name(s) of Data Collectors: David Clayton

Date: 12/13/06

Time: 8:30 am

On a monthly basis, the site will be inspected as follows:

Perimeter checked for signs of trespassing, fencing and signage integrity and infestation by exotic or nuisance vegetation;

Comments: None

Internal Roads (Both public and maintenance) checked for signs of dumping or trespassing, erosion, bridges and road integrity, and exotic or nuisance species infestations;

Comments: No dumping, erosion or trespass.

All construction areas checked for stabilization and re-vegetation, structure, operation, and integrity;

Comments: Construction has been initiated for all bridge and culvert replacements. All silt fences were checked. Water level is well below each construction zone and all areas were completely dry.

Powerline checked for trespassing or disturbance that may affect the integrity of the bank;

Comments: None

At least 3 polygons of each UMAM community evaluated or for those UMAM communities with less than three polygons, each UMAM polygon evaluated.

Comments:

Construction continues on the installation of the bridges and culverts. The silt fences were inspected. Silt fences at Greenhead branch were down due to earth moving of soil up the bridge embankment...hay bails were in place. This was brought to the attention of the contractor and was fixed. Grassing with annual grasses will occur on the built up soil shoulder. Water levels are 30' or more lower than the construction areas for all but Greenhead branch. Pictures of the construction site were taken for Dykes Mill pond and Greenhead branch. Fall flowering is complete. The turkey oaks in the upland are turning red and brown, who says the Pan Handle has no fall color?

**Wildlife Observations: Blue jay, tufted titmouse, deer, turkey, armadillo and raccoon tracks.**