



# Northwest Florida Water Management District

---

81 Water Management Drive, Havana, Florida 32333-4712

*(U.S. Highway 90, 10 miles west of Tallahassee)*

Phone: (850) 539-5999 • Fax: (850) 539-2777

Jonathan P. Stevenson  
*Executive Director*

December 14, 2014

Ms. Victoria Tauxe  
DEP-OSLER-MS 2500  
2600 Blair Stone Rd  
Tallahassee, FL 32399-2400

Re: Progress Report 21

Dear Ms. Tauxe,

Please accept this submittal as the 21st progress report for the SHLMB. This report was written in accordance with Specific Condition 27.

Please provide a brief description of permit requirements met and extent of work completed since the previous report:

1. Fishing and hunting continued at the SHLMB throughout the fall and winter without incident in accordance with Specific Condition 8 and Attachment A of the permit.
2. In accordance with Specific Condition 8, security and law enforcement continued at the bank without any violations.
3. A total of 841 acres were burned at the SHLMB. These included 806 acres of sandhills and 35 acres of hydric pine flatwoods (Figure 1).
4. Surveys for feral hog damage continued during the summer and fall of 2014 in accordance with Specific Condition 22. Hog damage was scattered within the 168 acres of hydric pine flatwoods restoration. Due to high water levels the hogs have been moved out of the forested wetlands where they usually were observed. A total of 14 hogs were eradicated from the bank in 2014 (Figure 2).
5. A thirty seven acre sand hill restoration adjacent to the check station was treated a second time for Bahia grass cover in September of 2014 (Figures 3).

Restoration activities anticipated within the next 6 months:

1. Surveys for nuisance and exotic species will continue in the winter and spring of 2015 in accordance with specific condition 22.
2. Water Level gauges will continue to be measured in 2015 in accordance with Specific Condition 12.

GEORGE ROBERTS  
Chair  
Panama City

JERRY PATE  
Vice Chair  
Pensacola

JOHN ALTER  
Malone

GUS ANDREWS  
DeFuniak Springs

STEPHANIE BLOYD  
Panama City Beach

GARY CLARK  
Chipley

JON COSTELLO  
Tallahassee

NICK PATRONIS  
Panama City Beach

BO SPRING  
Port Saint Joe

3. Approximately 460 acres of sand hill and 140 acres of hydric pine flatwoods will be burned during the spring or early summer of 2015.
4. Site inspections will be conducted to determine if any further shrub reduction is needed at the SHLMB.
5. The semi-annual monitoring will be conducted in accordance with Specific Condition 28.

**Please provide a brief description of problems encountered and solutions undertaken:**

Hog damage was observed within the 168 acres hydric pine flatwoods. FWC was notified and steps were taken to eradicate hogs. This will continue until hogs have been removed.

**Certification**

I certify that this report represents true accurate and representative description of the activities and site conditions at the time of this report. This semi-annual report was written in accordance with Specific Condition 27, of the permit.

---

David C. Clayton  
Environmental Scientist  
Qualified Mitigation Supervisor

**Enclosures:**

Figure 1. 2014 prescribed burns at the SHLMB

Figure 2. 2014 Feral hog eradication at the SHLMB

Figure 3. Hardwoods and Bahia grass treatments occurred on a 37 acre sand hill restoration

Figure 4-8. Representative Site Photos

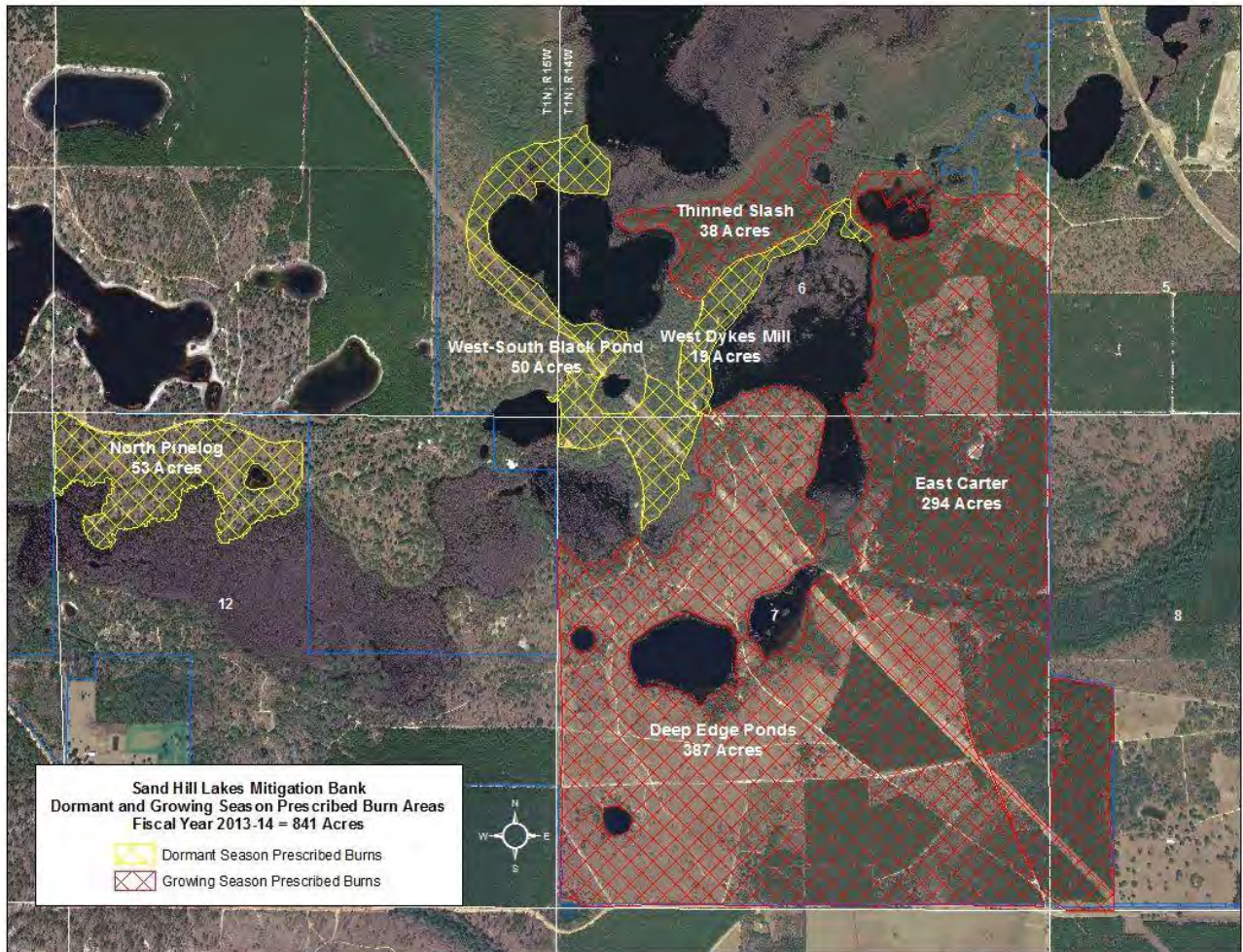


Figure 1. 2014 prescribed burns at the SHLMB



Figure 2. 2014 Feral hog eradication at the SHLMB

# Exhibit Map 11



Figure 3. Upland Wiregrass Planting in Sand hill restoration (20 acres)



Figure 4. 6/3/14. Facing North: Hyrdic Pine Flatwoods Restoration – Adjacent to Dry Pond

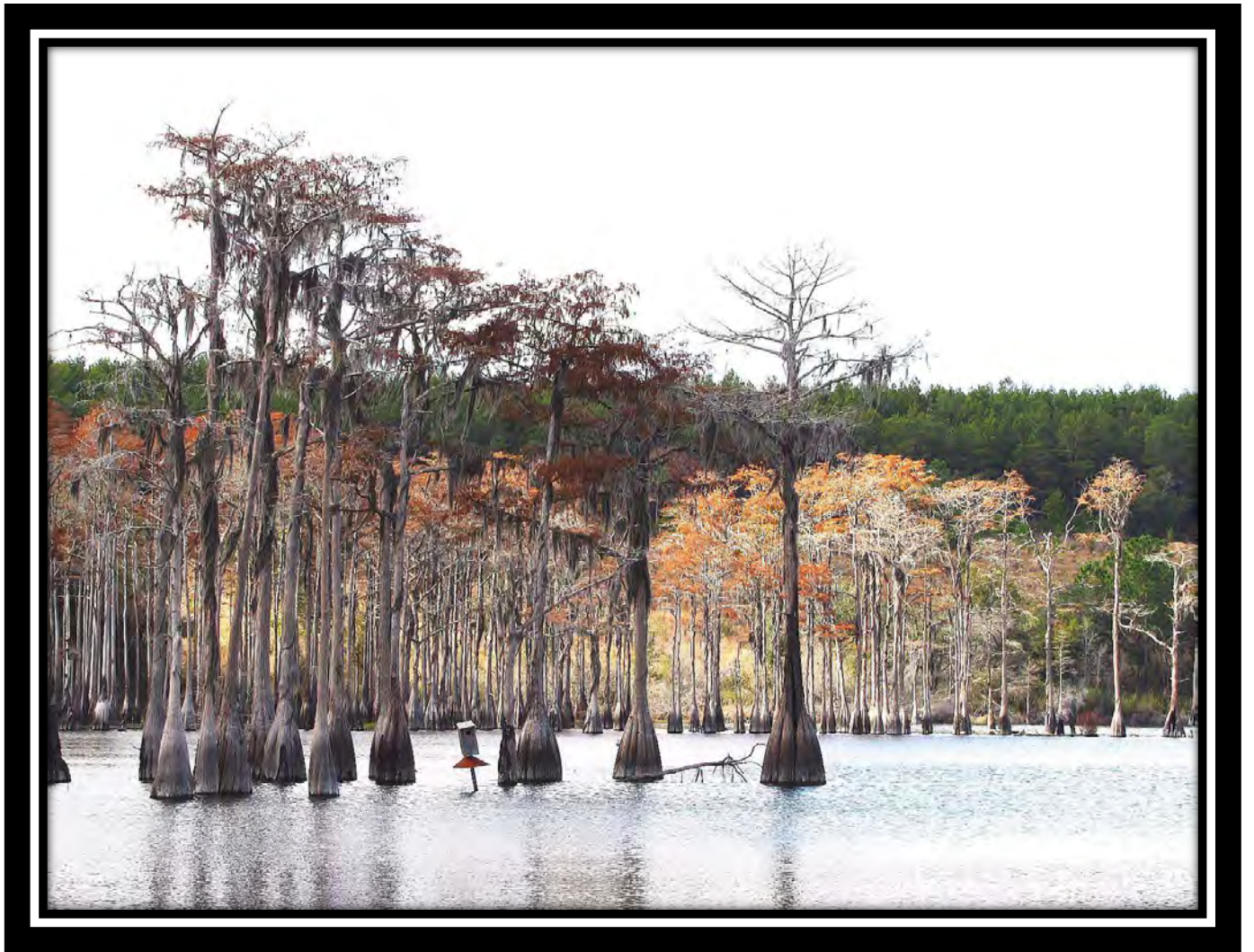


Figure 5. 6/3/14. Facing West: Black Pond



Figure 6. Facing East. Hydric Pine Flatwoods Restoration Burn: July 2014



Figure 7. Facing East. Dry Pond Boat Launch





Figure 8. Facind North. Sandhill enhancement adjacent to Little Deep Edge Pond.