



Douglas E. Barr
Executive Director

Northwest Florida Water Management District

81 Water Management Drive, Havana, Florida 32333-4712

(U.S. Highway 90, 10 miles west of Tallahassee)

(850) 539-5999 • (Fax) 539-2777

June 9, 2008

Ms. Victoria Tauxe
DEP-OSLER-MS 2500
2600 Blair Stone Rd
Tallahassee, FL 32399-2400

Re: Progress Report 8

Dear Ms. Tauxe,

Please accept this submittal as the **semi-annual progress report** for the SHLMB.

Please provide a brief description of permit requirements met and extent of work completed the previous report or since the permit was issued:

1. Fishing continued at the SHLMB throughout the winter without incident.
2. In accordance with Specific Condition 8, security and law enforcement continued at the bank throughout the winter. No violations have been observed.
3. Due to inappropriate mulch used by the contractor, Bahia grass was observed within the erosion stabilization areas #1, #2, #3 and #10 in 2007. These areas were treated with herbicide by the contractor twice in 2007, until no living plant was observed. These areas were inspected in March and April of 2008 and small coverage of Bahia grass had re-sprouted. BRA has been contracted to treat the Bahia grass in June and August of 2008 (Figure 4).
4. The areas that had previously had small patches of torpedo grass (*Panicum repens*) were inspected in April of 2008 at old boat launches associated with Dry Pond, Garret Pond and two Green Ponds. No live coverage of torpedo grass was observed at Dry Pond, Garret Pond or the eastern Green Pond boat launch. However, a few very small patches were observed at the western Green Pond boat launch. These patches were removed by hand.

GEORGE ROBERTS
Chair
Panama City

PHILIP K. McMILLAN
Vice Chair
Blountstown

SHARON PINKERTON
Secretary/Treasurer
Pensacola

PETER ANTONACCI
Tallahassee

STEPHANIE BLOYD
Panama City Beach

SHARON T. GASKIN
Wewahitchka

STEVE GHAZVINI
Tallahassee

TIM NORRIS
Santa Rosa Beach

JERRY PATE
Pensacola

5. Surveys for feral hogs continued during the fall 2007 sampling at the SHLMB. Some feral hog damage was observed adjacent to Dry and Dykes Mill Pond. Traps were set for the hogs. In February, 2008, 6 hogs were removed.
6. Cypress trees were planted at Dykes mill pond, wire grass was planted in Management Unit 2, and long leaf pine was planted in Management Units 2 (Wet Pine Flatwoods), 10 and 11 (sandhill).
7. Remaining winter burns were completed by April of 2008. The area adjacent to Dry Pond and the back side of Black Pond that had been gyrotracked was burned with a very hot fire in late April. Some minor spot over occurred but were quickly extinguished. The end result was an excellent burn though a few pines were killed in the fire (Figure 10 and 11).
8. Due to poor survival, wire grass, cypress and long leaf pine tublings were re-planted in erosion stabilization areas #1, #2, #3 and #10 in early spring 2008 in accordance with the planting plan. Follow up site inspection indicates excellent survival of the re-planted material (Figure 4).
9. Construction on of Black pond was initiated on October 30, 2007 and was completed in January 2008. The as-built has been included in Appendix 2.

Restoration activities anticipated within the next 6 months:

1. Surveys for nuisance and exotic plants as well as for feral hogs will continue in the summer and fall of 2008.
2. Warm season burns will be conducted for Management Unit 3, portions of Management Unit 2 adjacent to the eastern portion of Dry Pond and the Pine Log Creek flow way, portions of Management Unit 10 adjacent to Garret Pond, and the far western portion of Management Unit 10. Figures included for burns associated with the far western portion of Management Unit 10 and the area adjacent to Garret Pond (Figure 12 and 13).
3. Gyrotrack work will continue for an additional 38 acres adjacent to the Western portion of Dry Pond (Figure 14).
4. Erosion areas identified with Bahia grass cover (Figure 4) will be treated several times until eradicated.
5. A total of 18.5 acres of Gyrotracked area adjacent to the southern portion of Dry Pond (the whale) and the western portion of Management Unit 2 (thinned plantation pine), and the eastern portion of Gyrotrack area in Management Unit 3 adjacent to Dry Pond and the Pine Log Creek flow way, will be treated with herbicide to further reduce shrub cover. These areas will be burned in the fall/winter 2008.
6. Water Level gauges will continue to be measured over the summer.
7. Site prep burns for the areas, where offsite sand pine were harvested (Management Unit 11).


8. Laurel and live oak trees will be cut in areas of Management Unit 11 adjacent to the field office.
9. The area adjacent to Management Unit 5, Dykes Mill Pond will be re-planted with Black Gum and Cypress seedlings.
10. Fall monitoring.

Please provide a brief description of problems encountered and solutions undertaken:

Some of the cypress planted adjacent to Dykes Mill Pond restoration were planted at the wrong location and elevation. A supplemental planting will occur in the fall/winter 2008-2009 to remedy this situation.

Thank you for your consideration of this submittal. If you have any question or comments please feel free to contact me at 850-539-5999.

Sincerely,



David Clayton
QMS

Enclosures:

- Figure 4 – Erosion Stabilization Sites (1-6 with Bahia Grass Cover)
- Figure 9 – Water Level and Staff Gauge Locations
- Figure 10 – Spring SHLMB Dry and Black Pond Site Prep Burn
- Figure 11 – Spring Site Prep Burn Spot Over
- Figure 12 – Warm Season Burn (Management Unit 11)
- Figure 13 – Warm Season Burn (Management Unit 10)
- Figure 14 – Gyrotrack Areas Showing 38 Acre Addition Adjacent to Dry Pond West

Appendix 1: Site Photos

Appendix 2: As-built for Black Pond Dam

Figure 4 - Erosion Stabilization Sites

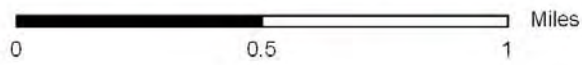
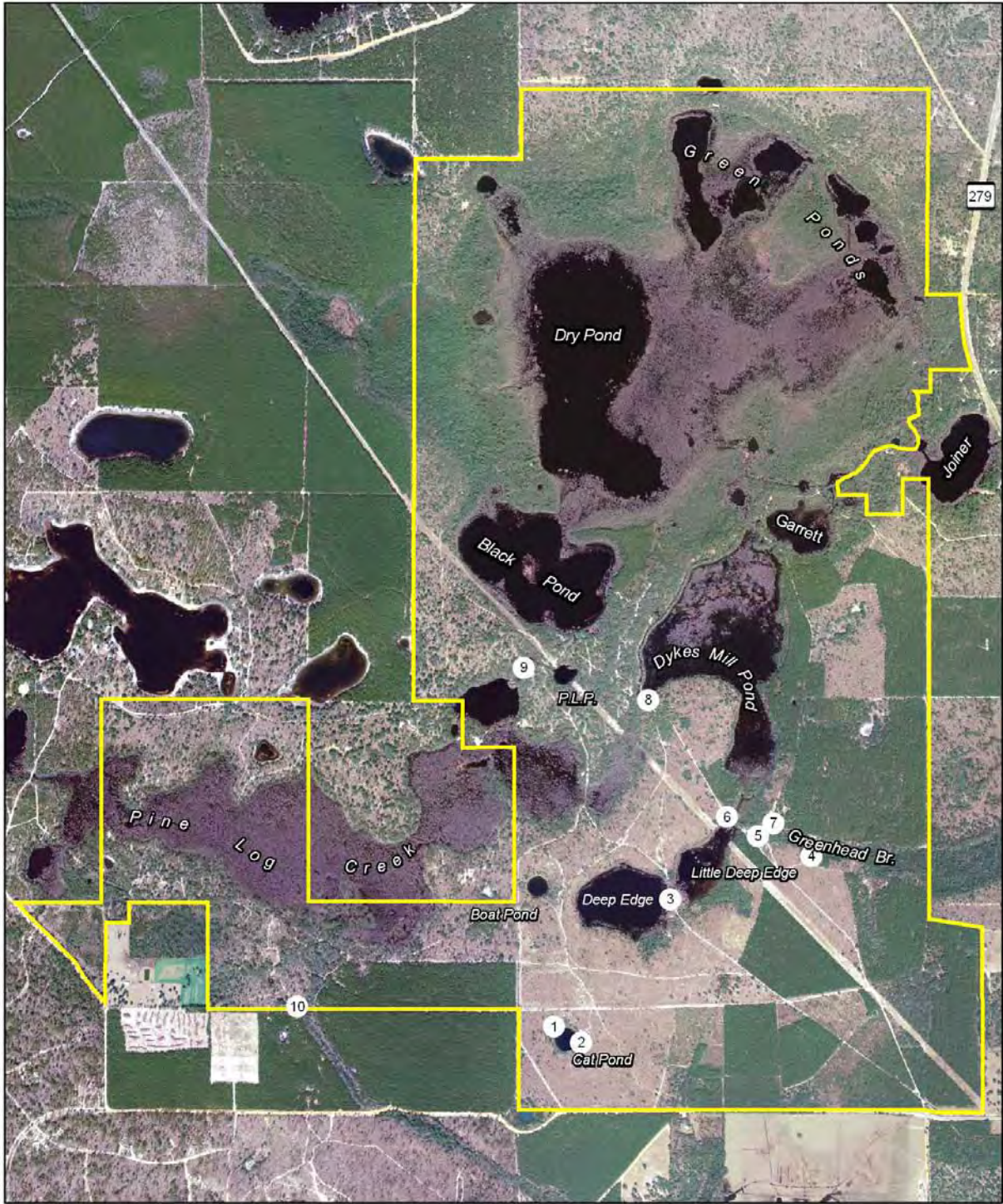
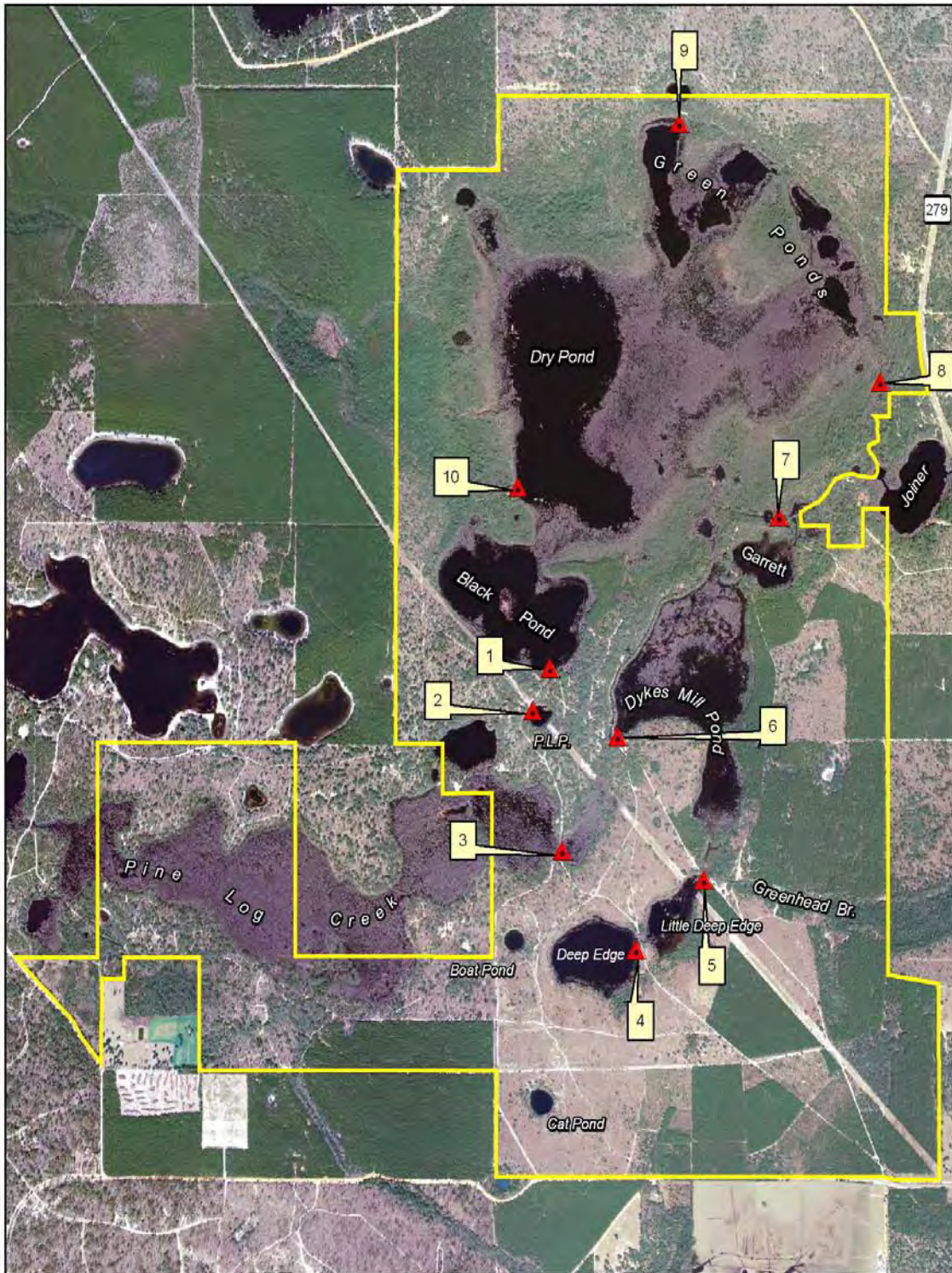


Figure 9 - Water Level Staff Gage Locations



▲ = Staff Gage (Installed 2005)

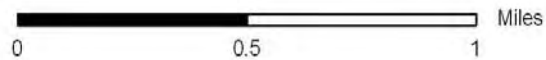


Figure 10. Spring SHLMB Dry and Black Pond Site Prep Burn

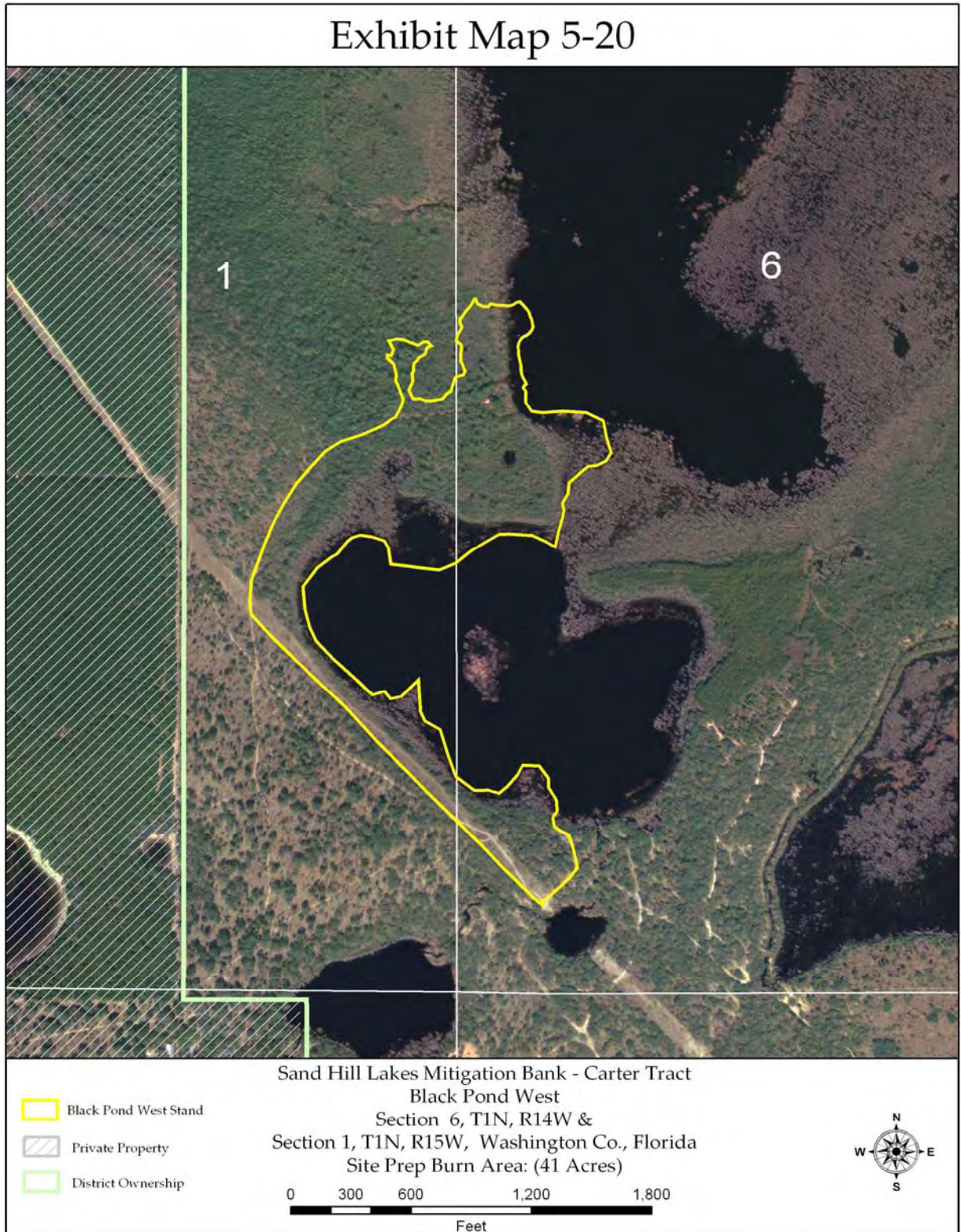


Figure 11. Spring Site Prep Burn Spot Over

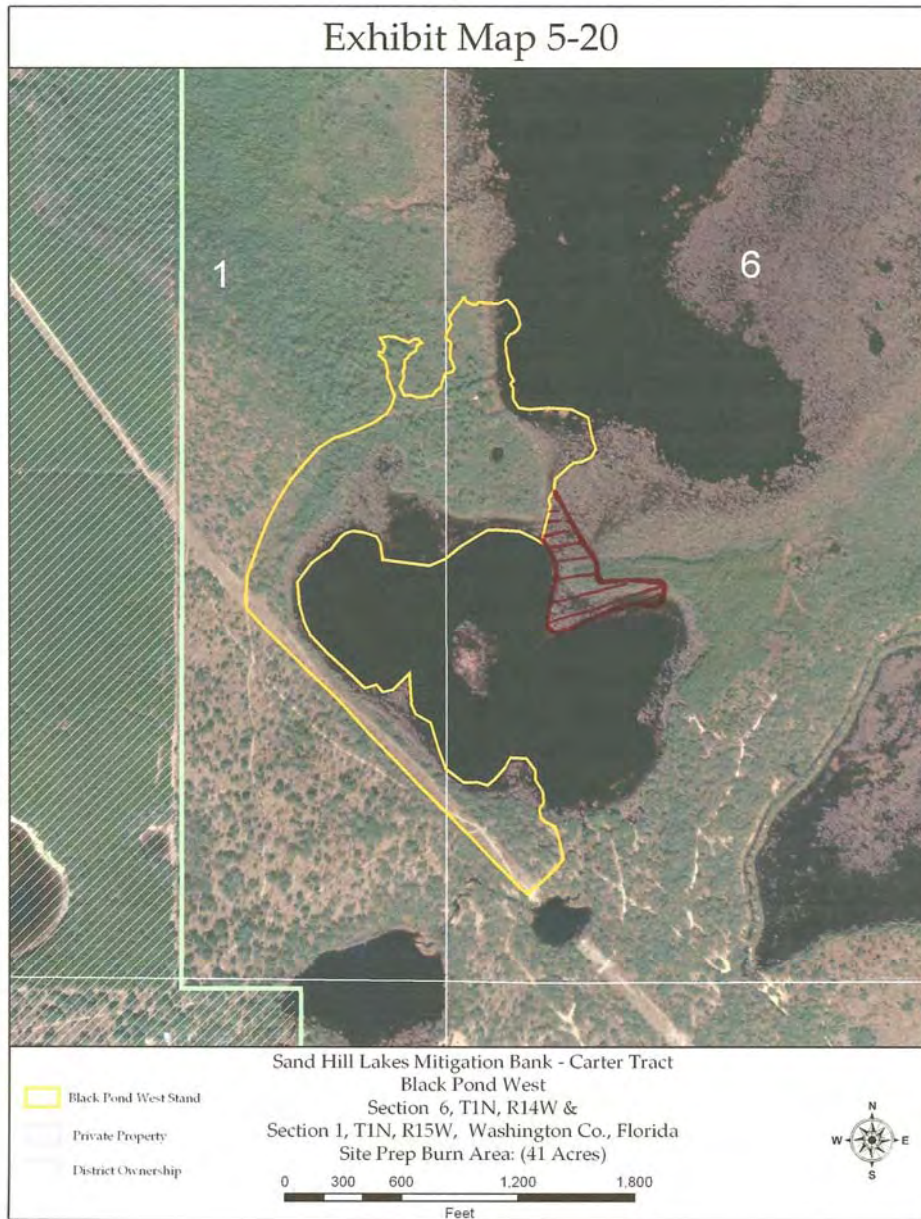


Figure 12. Warm Season Burn (Management Unit 11)

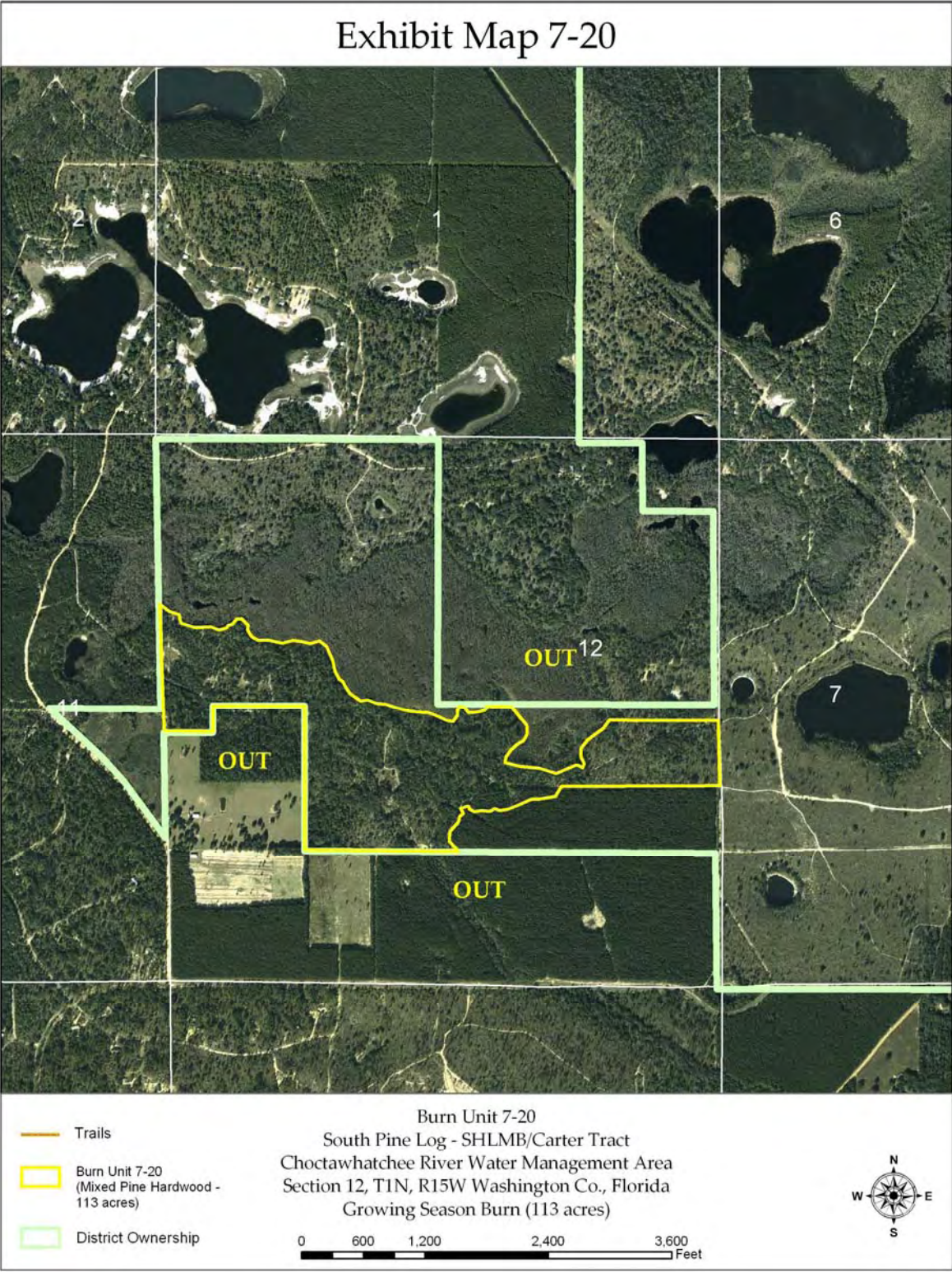


Figure 13. Warm Season Burn (Management Unit 10).

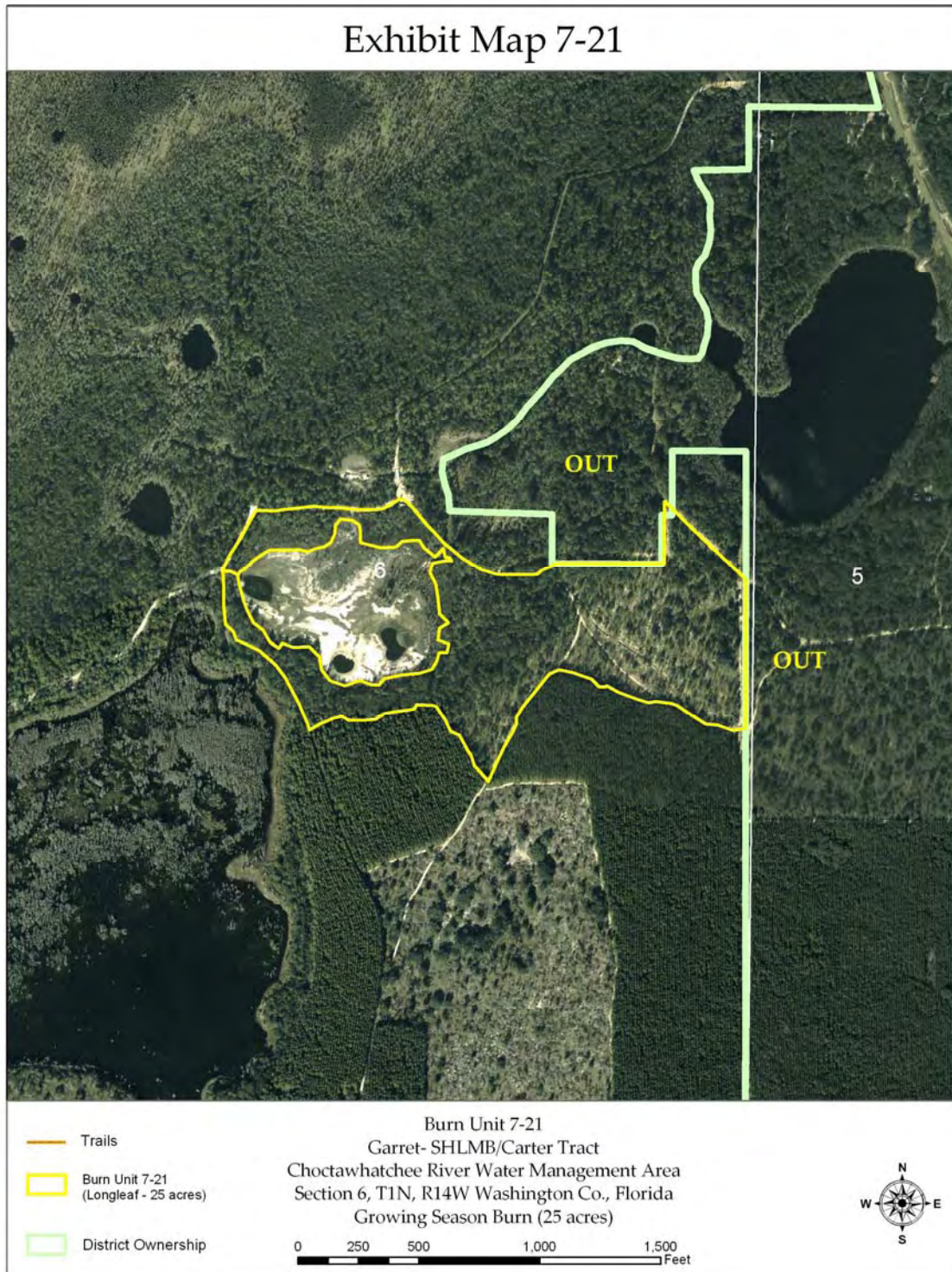
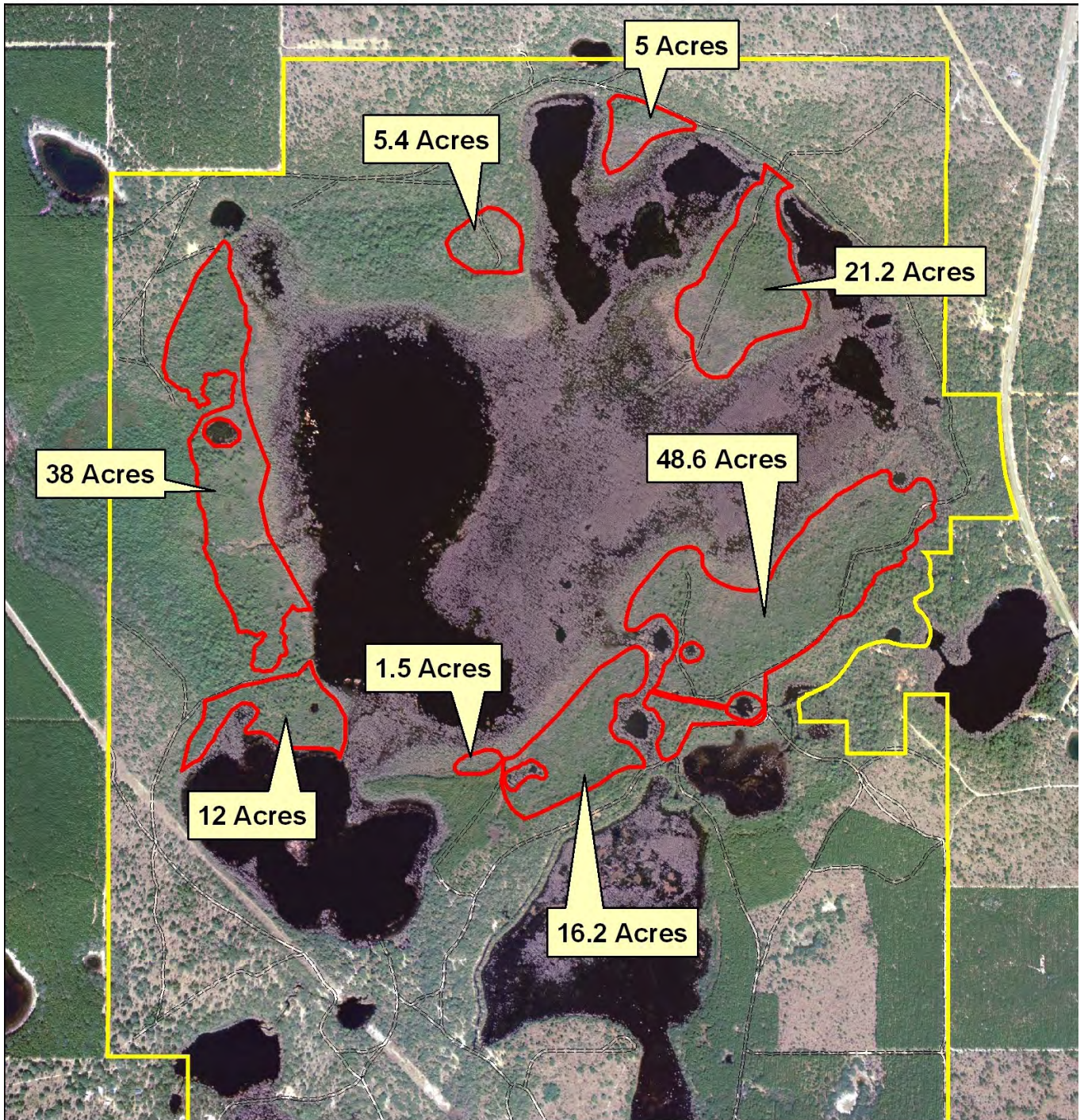
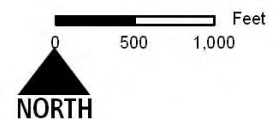


Figure 14. Gyrotrack Areas Showing 38 Acre Addition Adjacent to Dry Pond West
Brush Reduction



Northwest Florida Water Management District
Sand Hill Lakes Mitigation Bank (SHLMB)
Brush Reduction (Gyro-Track Mulching) - ~150 Acres
Section 6, Township 1 North, Range 14 West
Washington Co., Florida



Appendix 1. Site Photos



Re-planted Erosion Areas Showing Good Wire Grass Survival (040308)



Western Side of Deep Edge Following Winter Burn 040308



Gyrotrack Area Adjacent to Dry Pond Following Spring Burn 04020



Gyrotrack Area Near Dry Pond and Black Pond Following Spring Burn 040208



Gyrotrack Area Following Poor Burn Adjacent to Dry Pond and Pine Log Flow Way 040308
(Area will be burned this summer)

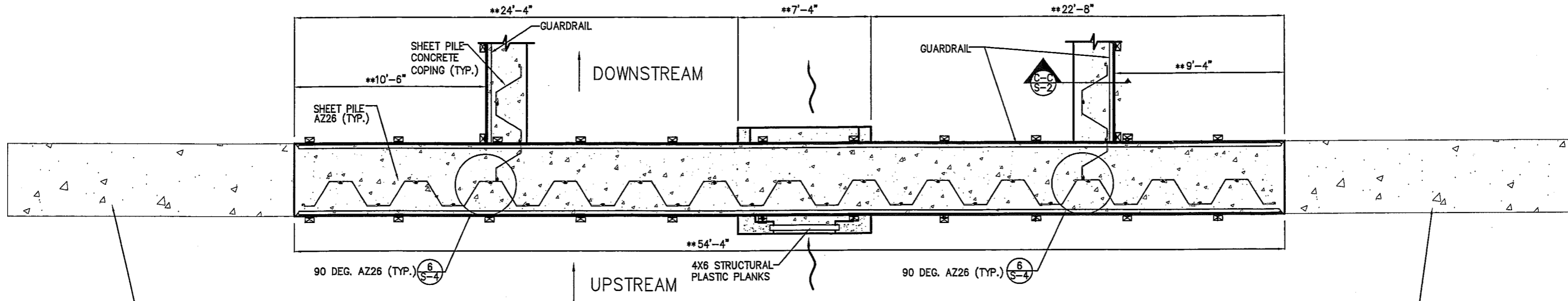


Gyrotrack and Burned Area Near Green Ponds (Island) and Wire Grass Planting 040308

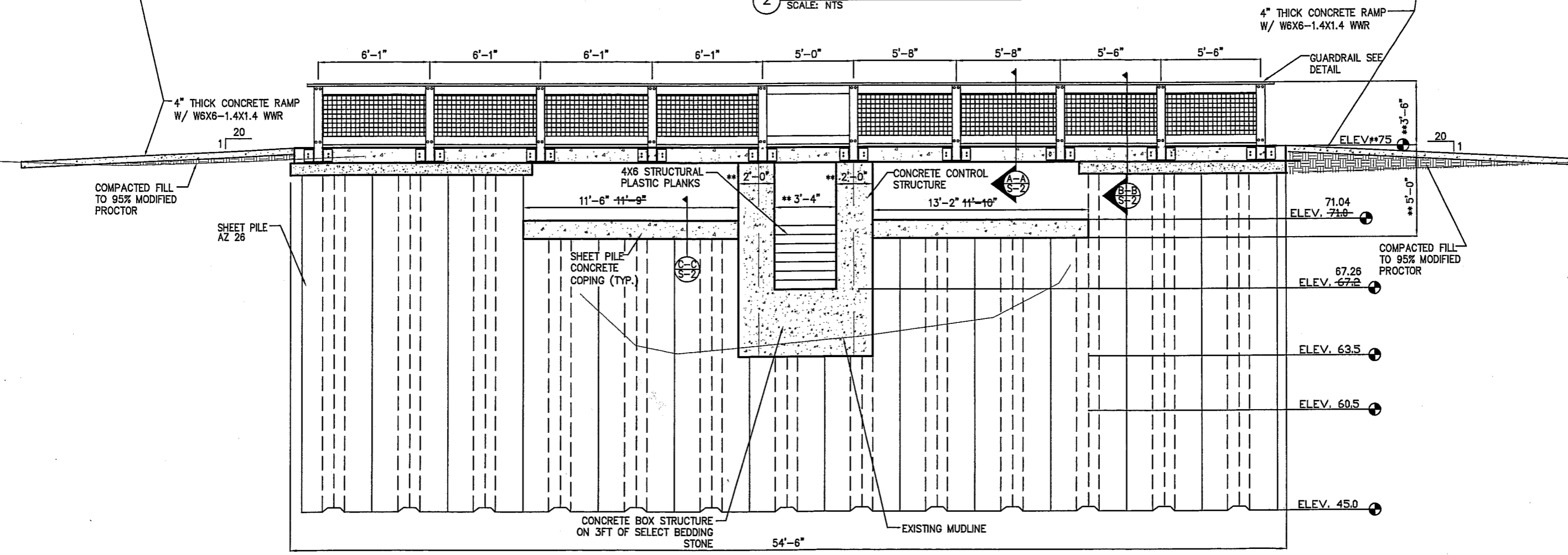


Wiregrass Plugs on Island 040308 (Good Survival)

Appendix 2. As Built for Black Pond



2 CONTROL STRUCTURE PLAN VIEW
SCALE: NTS



1 CONTROL STRUCTURE ELEVATION
SCALE: NTS

SURVEY NOTES:
1. ELEVATIONS SHOWN HEREON ARE BASED ON THE NAVD 88 DATUM (SOURCE BENCH, WASHCO 023 ELEVATION 122.04'). PER DESIGN DRAWINGS PROVIDED BY REGISTE, SLIGER ENGINEERING, INC. 2006.

LEGEND

67.26	67.2	- ASBUILT ELEVATION
11'-6"	11'-9"	- ASBUILT DIMENSION
**	67.2	- ASBUILT ELEVATION NO VARIANCE
**	11'-9"	- ASBUILT DIMENSION NO VARIANCE

THE UNDERSIGNED SURVEYOR CERTIFIES THAT THE DIMENSIONS AND ELEVATIONS SHOWN HERON REPRESENT THE ASBUILT INFORMATION WHERE INDICATED.

David W. Hutcheson
DAVID W. HUTCHESON, P.S.M. DATE
FLORIDA REGISTRATION NO. 5051
NOT VALID WITHOUT THE SIGNATURE AND ORIGINAL RAISED SEAL OF A FLORIDA LICENSED SURVEYOR AND MAPPER.

SHEET NO.	1	of	1
	1		1
BLACK POND CONTROL STRUCTURE ASBUILT SURVEY			
REGISTE, SLIGER ENGINEERING, INC. 1427 N. Bronough St., Tallahassee, FL 32303			
JOB NO.	4461	DATE	2/26/08
DRAFTED	KNC	CHECKED	DWH
PRJ. ENGR.	DWH	PRJ. MGR.	DWH
CAPITAL ENGINEERING & SURVEYING, INC. 318 North Monroe Street Tallahassee, Florida 32301 850-422-0020 David W. Hutcheson, P.E. 38670 P.S.M. 5051 E.E. 2722			
NUMBER		REVISIONS	
BY		DATE	