



Douglas E. Barr
Executive Director

Northwest Florida Water Management District

81 Water Management Drive, Havana, Florida 32333-4712
(U.S. Highway 90, 10 miles west of Tallahassee)

(850) 539-5999 • (Fax) 539-2777

January 13, 2012

Ms. Victoria Tauxe
DEP-OSLER-MS 2500
2600 Blair Stone Rd
Tallahassee, FL 32399-2400

Re: Progress Report 15

Dear Ms. Tauxe,

Please accept this submittal as the 15th **semi-annual progress report** for the SHLMB.

Please provide a brief description of permit requirements met and extent of work completed since the previous report or since the permit was issued:

1. Fishing and fall hunting continued at the SHLMB without incident. The water levels at the lakes remained low for the remainder of 2011. Most readings were below the staff gages and several of the ponds saw a total draw down. Water levels started to rise with the winter fronts. Water levels were monitored monthly and will be included in annual report (Figure9).
2. In accordance with Specific Condition 8, security and law enforcement continues at the bank without incident.
3. Surveys for feral hogs continued during in fall of 2012. No hogs have been observed.
4. Shrubs were thinned in 100 acres associated with Management Unit 10 adjacent to the Green Ponds. Shrub densities had increased to the point of impacting the understory community and were thinned to help support the development of the understory (Figure 10).
5. Bahia grass was eradicated in a twenty four acre sand hill restoration, Management Units 10 & 11 adjacent to the entrance. This area was a former slash pine plantation with little to no native cover. Further site prep is needed in this area for the next year. Direct seeding will occur here in late 2012 or early 2013 (Figure 11).
6. Bahia grass, centipede and wormwood were eradicated in a twenty four acre parcel sand hill restoration site, Management Unit 11, adjacent to Green Head Branch in August (Figure 12).
7. Shrubs within the hydric pine flatwoods, Management Unit 5, (165 acres) were treated to reduce shrub cover further. This is the second spot treatment and was completed in the second week in July (Figure 13).
8. Hardwoods and persimmon were eradicated in 144 acres of sandhill above Deep Edge Pond. Management Unit 12.



GEORGE ROBERTS
Chair
Panama City

PHILIP K. McMILLAN
Vice Chair
Blountstown

STEVE GHAZVINI
Secretary/Treasurer
Pensacola

PETER ANTONACCI
Tallahassee

STEPHANIE BLOYD
Panama City Beach

JOYCE ESTES
Eastpoint

RALF RISH
Port St. Joe

TIM NORRIS
Santa Rosa Beach

JERRY PATE
Pensacola

9. Hardwood shrubs were reduced in a 70 acre polygon above black pond in September 2011 in Management Unit 10. Following a ULW herbicide treatment, the sparkle berry and other shrubs were released and had started shading out the wire grass. Shrubs were thinned to return the area to an open habitat.
10. Approximately 600 acres of sandhill adjacent to Deep Edge and Little Deep Edge, Management Unit 10, and 12 were burned in early October to reduce the density of long leaf pine seedlings.
11. District staff will plant 22 different species on 15.5 acres at the SHLMB December 5-8th. A total of 75,020 herbaceous wetland plants were installed on 3' centers. These species include rayless sunflower, rayless goldenrod and sneezeweed.
12. A total of 220,000 wet prairie wire grass and tooth ache grass seedlings were planted in the winter of 2011/12 in the 165 acres of restored wet flatwoods at the SHLMB.
13. A total of 30 acres (40,000) tublings of upland wire grass were added to the developing sand hill south of Boggy Branch. The area is being converted from a sand pine plantation to a sand hill community.

Restoration activities anticipated within the next 6 months:

1. Sand Pine seedlings that have emerged since the removal of the sand pine plantation (173 acres) will be eradicated during the spring of 2012 in Management Unit 11 (Figure 14).
2. Slash Pine will be further thinned to meet permit conditions of less than 200 trees per acre in Management Unit 3 Hydric Pine Planation. Area will be planted with wire grass and direct seeded in the fall.
3. An additional 6 acres in Management Unit 2, adjacent to Management Unit 3 will be thinned to less than 200 trees per acre and planted with wire grass and tooth ache grass in winter 2012/2013. This will increase the onsite hydric pine flatwoods restoration to 171 acres.
4. Water Level gauges will continue to be measured in 2011 (Figure 9).
5. Surveys for nuisance species will continue in the fall of 2011.

Please provide a brief description of problems encountered and solutions undertaken:

No real problems were observed at the SHLMB this year. The site continues to develop and thrive.

Thank you for your consideration of this submittal. If you have any questions or comments, please feel free to contact me at 850-539-5999.


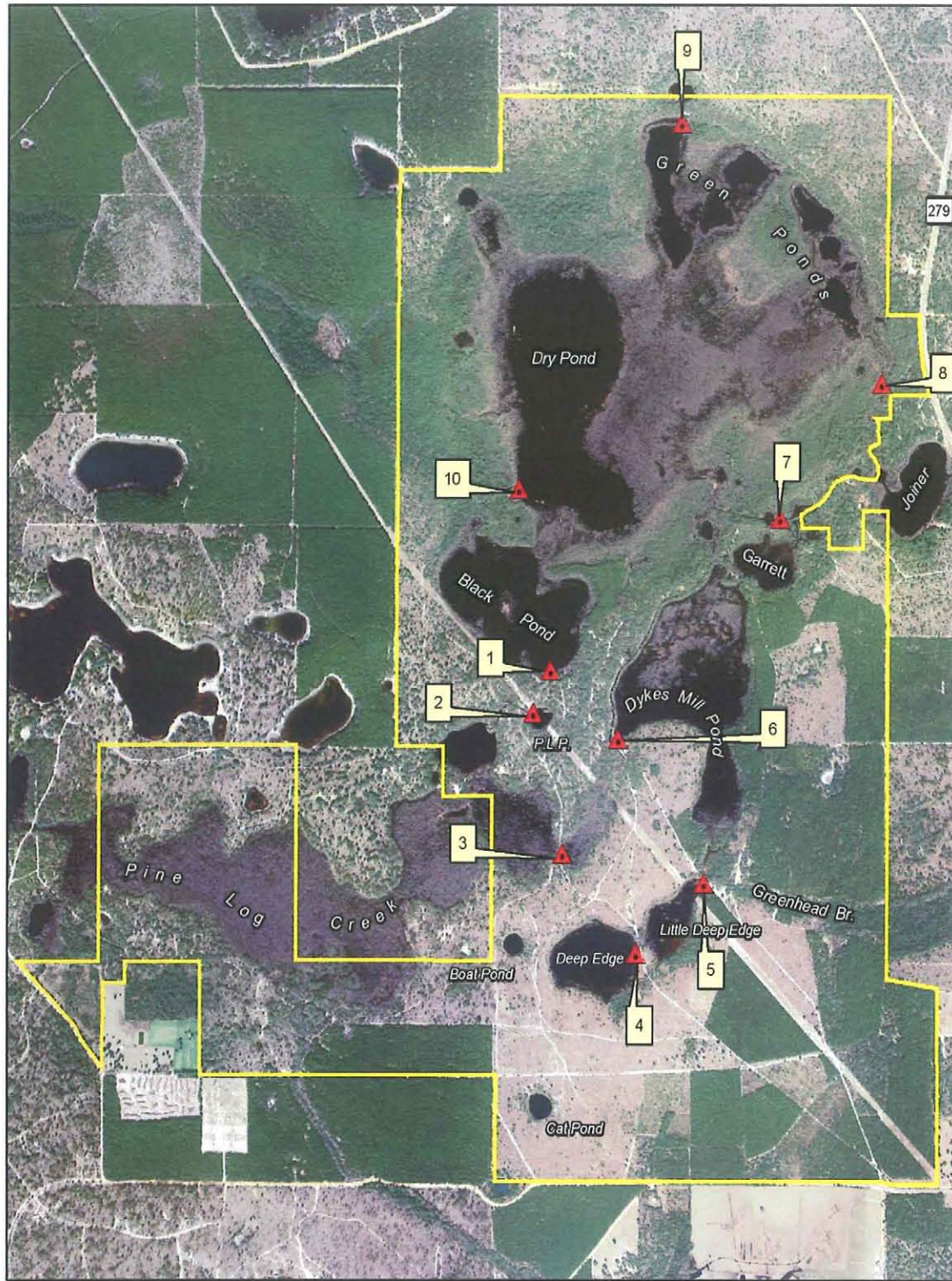
Sincerely,

David Clayton
Environmental Scientist
QMS

Figure 9 - Water Level Staff Gage Locations



▲ = Staff Gage (Installed 2005)



Figure 10. Hardwood Eradication (Sand Hills) 100 acres

SHLMB Herbicide Activities - 2011

SHLMB Boundary Herbicide Areas

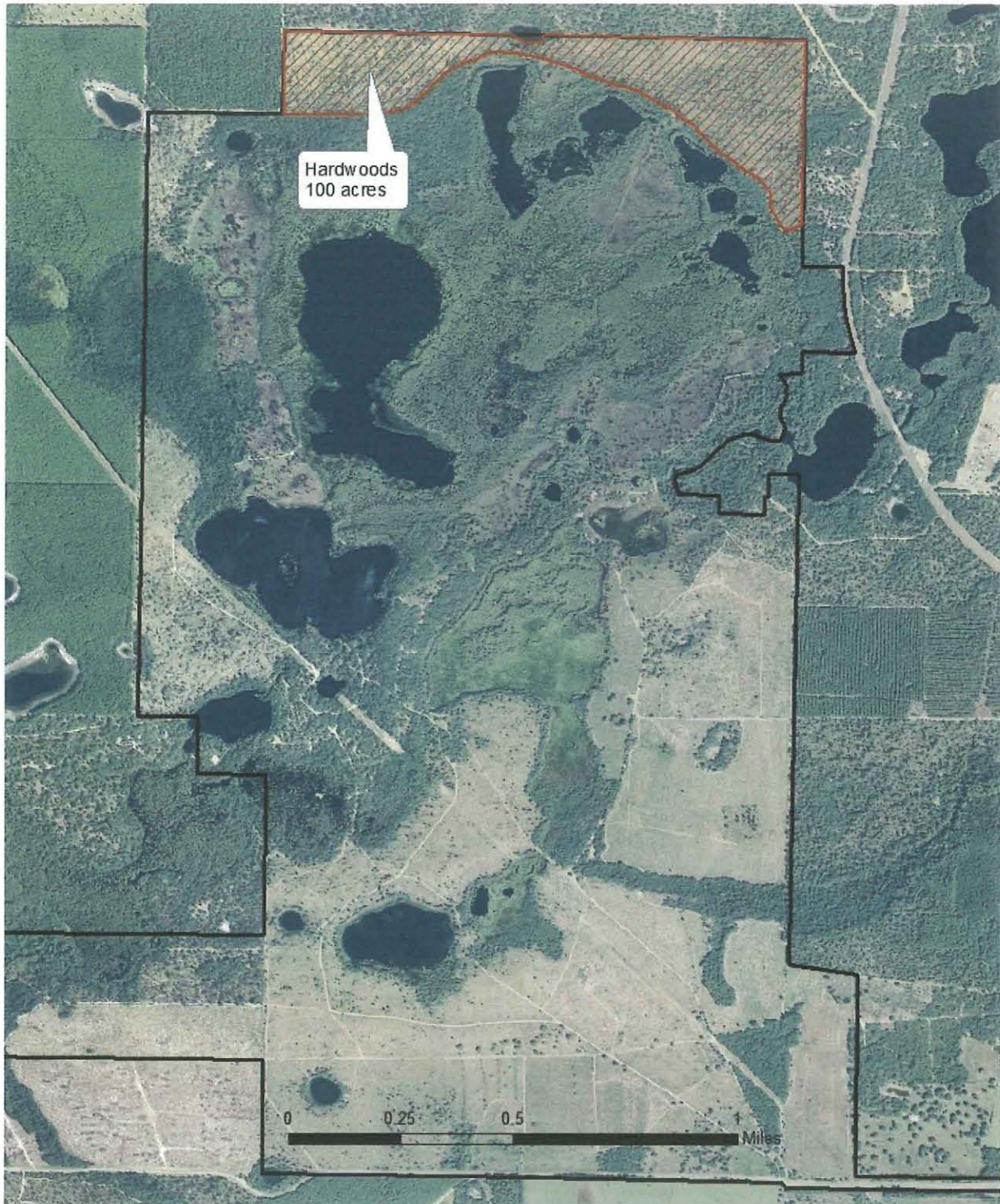


Figure 11. Bahia Grass Eradication (24 acres)

SHLMB Herbicide Activities - 2011

SHLMB Boundary Herbicide Areas

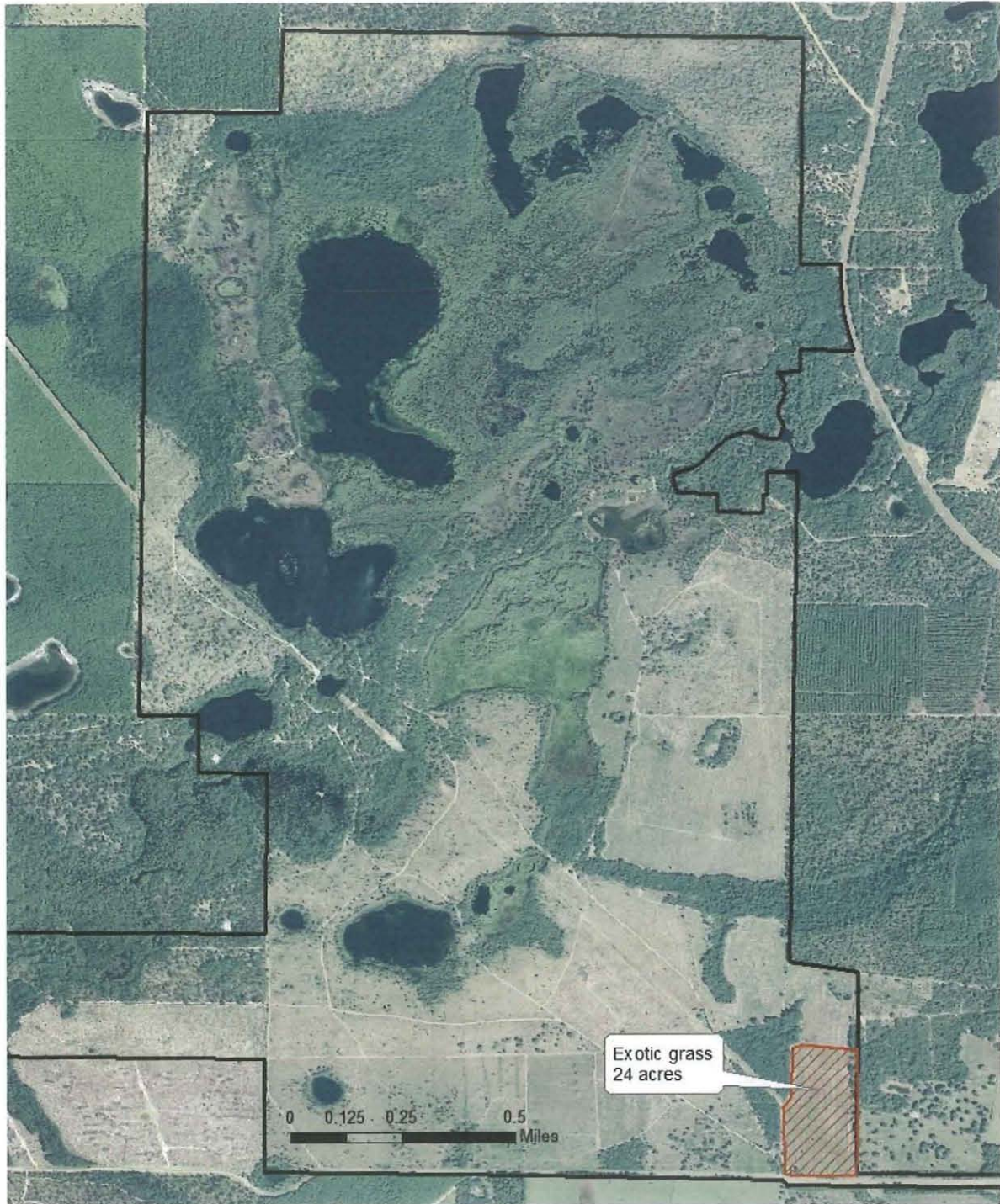


Figure 12. Hardwood and Exotic Grass Eradication in Developing Sand Hill (24 acres)

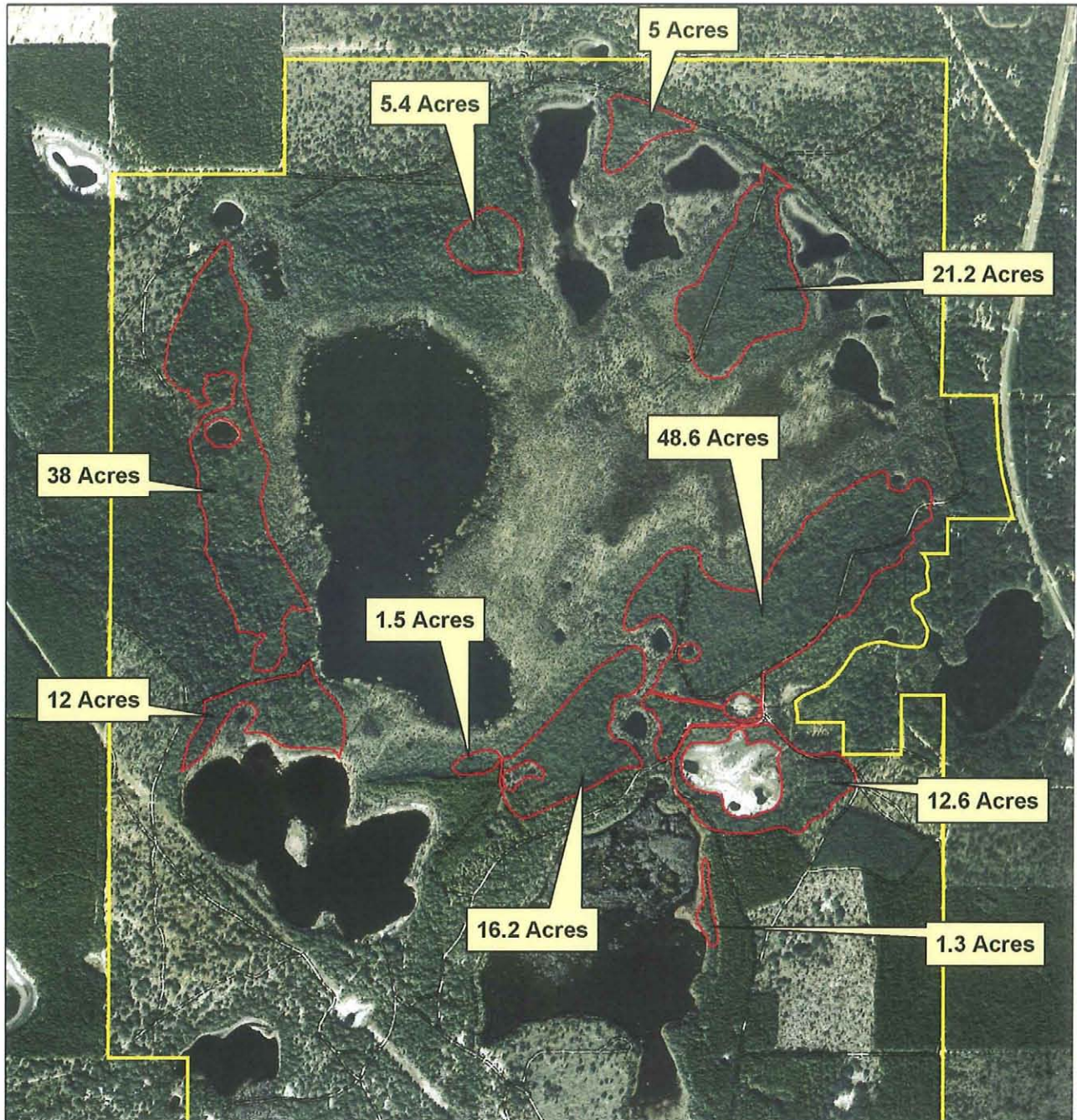
SHLMB Herbicide Activities - 2011

 SHLMB Boundary  Herbicide Areas



Figure 13. Shrub Reduction in Wet Flatwoods Restoration Areas (165 acres)

Brush Reduction



Northwest Florida Water Management District
Sand Hill Lakes Mitigation Bank (SHLMB)
Brush Reduction (Gyro-Track Mulching) - ~165 Acres
Section 6, Township 1 North, Range 14 West
Washington Co., Florida

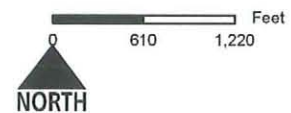


Figure 14. Sand Pine Reduction Areas (173 Acres)



Site Photos



The Whale adjacent to Dry Pond: Hydric Pine Flatwoods Restoration (09/2011)



Rayless Sunflower (*Helianthus radula*) plants, Planted at SHLMB 12/2011



Cypress: Dry Pond 11/2011



34 Acre Hydric Pine Flatwoods Restoration 09/2011



34 Acre Hydrich Pine Flatwoods Restoration (09/2011)



Cypress: Dry Pond 11/2011



Azure Blue sage (*Salvia azurea*) Sandhill 11/2011