



# Northwest Florida Water Management District

81 Water Management Drive, Havana, Florida 32333-4712  
*(U.S. Highway 90, 10 miles west of Tallahassee)*

Jonathan P. Steverson  
*Executive Director*

Phone: (850) 539-5999 • Fax: (850) 539-2777

January 2, 2013

Ms. Victoria Tauxe  
DEP-OSLER-MS 2500  
2600 Blair Stone Rd  
Tallahassee, FL 32399-2400

**RECEIVED**

**JAN 03 2013**

**OFFICE OF SUBMERGED LANDS  
AND ENVIRONMENTAL RESOURCES**

Re: Progress Report 17

Dear Ms. Tauxe,

Please accept this submittal as the 17th semi-annual progress report for the SHLMB. This report was written in accordance with Specific Condition 27.

**Please provide a brief description of permit requirements met and extent of work completed since the previous report:**

1. Fishing and hunting continued at the SHLMB throughout the summer and fall without incident in accordance with Specific Condition 8 and Attachment A.
2. In accordance with Specific Condition 8, security and law enforcement continued at the bank throughout the winter. No violations have been observed.
3. Surveys for feral hog damage continued during the fall 2012 sampling at the SHLMB in accordance with Specific Condition 22. No hog damage was observed. In addition, no significant exotic plant species coverage was observed.
4. During the fall of 2012, a total of 260 acres have been burned in accordance with the approved burn plan, Specific Condition 11, Attachment E. (Figure 1.) These include 169 acres of sandhill restoration that had had the hardwoods reduced in 2011 and 91 acres of hydric pine flatwoods.
5. Thinning of hardwoods and warm season burns have been a significant component of sand hill restoration at the SHLMB. In accordance with Specific Condition 10b, in 2012 a total of 40 acres of hardwoods were reduced in order to improve gopher tortoise habitat (Figure 2).
6. In accordance with Specific Condition 10a, sand pine seedlings within 158 acres sand hill restoration were eradicated during the summer of 2012 (Figure 3).

GEORGE ROBERTS  
Chair  
Panama City

JERRY PATE  
Vice Chair  
Pensacola

JOYCE ESTES  
Secretary-Treasurer  
Eastpoint

JOHN ALTER  
Malone

GUS ANDREWS  
DeFuniak Springs

STEPHANIE BLOYD  
Panama City Beach

JON COSTELLO  
Tallahassee

NICK PATRONIS  
Panama City Beach

BO SPRING  
Port Saint Joe

7. In accordance with Specific Condition 10a, slash pine thinning to reduce tree densities to 200 trees per acre or less occurred within Management Unit 3, slash pine wet flatwoods restoration area in late August/September 2012 (Figure 4).
8. The annual monitoring was conducted between September 24-28 and October 24-31 2012 in accordance with Specific Conditions 26 and 28.
9. Oblique aerals were flown October 23, 2012 in accordance with Specific Condition 28 and have been posted at NFWFMD.wetlands.com

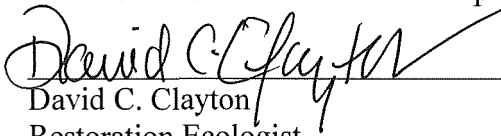
**Restoration activities anticipated within the next 6 months:**

1. Surveys for nuisance species will continue in spring of 2013 in accordance with specific condition 22.
2. Erosion control areas previously restored will be checked for Bahia grass cover and treated with herbicide as needed in accordance with Specific Condition 22 and 23.
3. Nuisance shrubs within the hydric pine flatwood restoration area (165 acres) will be treated with herbicide in 2013 in accordance with Specific Condition 10c.
4. A total of 16 acres of wet wire grass and tooth ache grass will be planted in early January in Management Unit 3 and adjacent hydric flatwoods (154,880 tubelings) in accordance with Specific Condition 10c and Attachment D (Figure 4).
5. Long leaf pine seedlings will be planted in the sand hill restoration area east of the Green Ponds and in the sand hill near Dykes Mill Pond in accordance with Specific Condition 10c and Attachment D. Tree counts in these areas indicated a near failure of planted long leaf pine seedlings. This planting will help re-establish long leaf pine at appropriate densities without impacting the understory (Figure 5).
6. Water Level gauges will continue to be measured in 2013 in accordance with Specific Condition 12.
7. A total of 77 acres of hydric pine flatwood restoration will be burned during the winter of 2012/2013 in accordance with the approved burn plan, Specific Condition 11, Attachment E, (Figure 6).

Please provide a brief description of problems encountered and solutions undertaken:  
No problems have occurred.

**Certification**

I certify that this report represents true accurate and representative description of the activities and site conditions at the time of this report.

  
David C. Clayton  
Restoration Ecologist  
Environmental Scientist  
Qualified Mitigation Supervisor

Enclosures:

Figure 1. 2012 Burns at SHLMB (260 Acres)

Figure 2. 2012 Hardwood Eradication (40 acres) (Management Unit 11 - 12 (Restored Sandhill)

Figure 3. 2012 Sand Pine Seedling Eradication (158 acres) (Management Unit 11, (Restored Sandhill)

Figure 4. Slash Pine Thinning (9/12)/Wire grass/toothache grass planting areas (16 acres) (Winter 2012/2013).

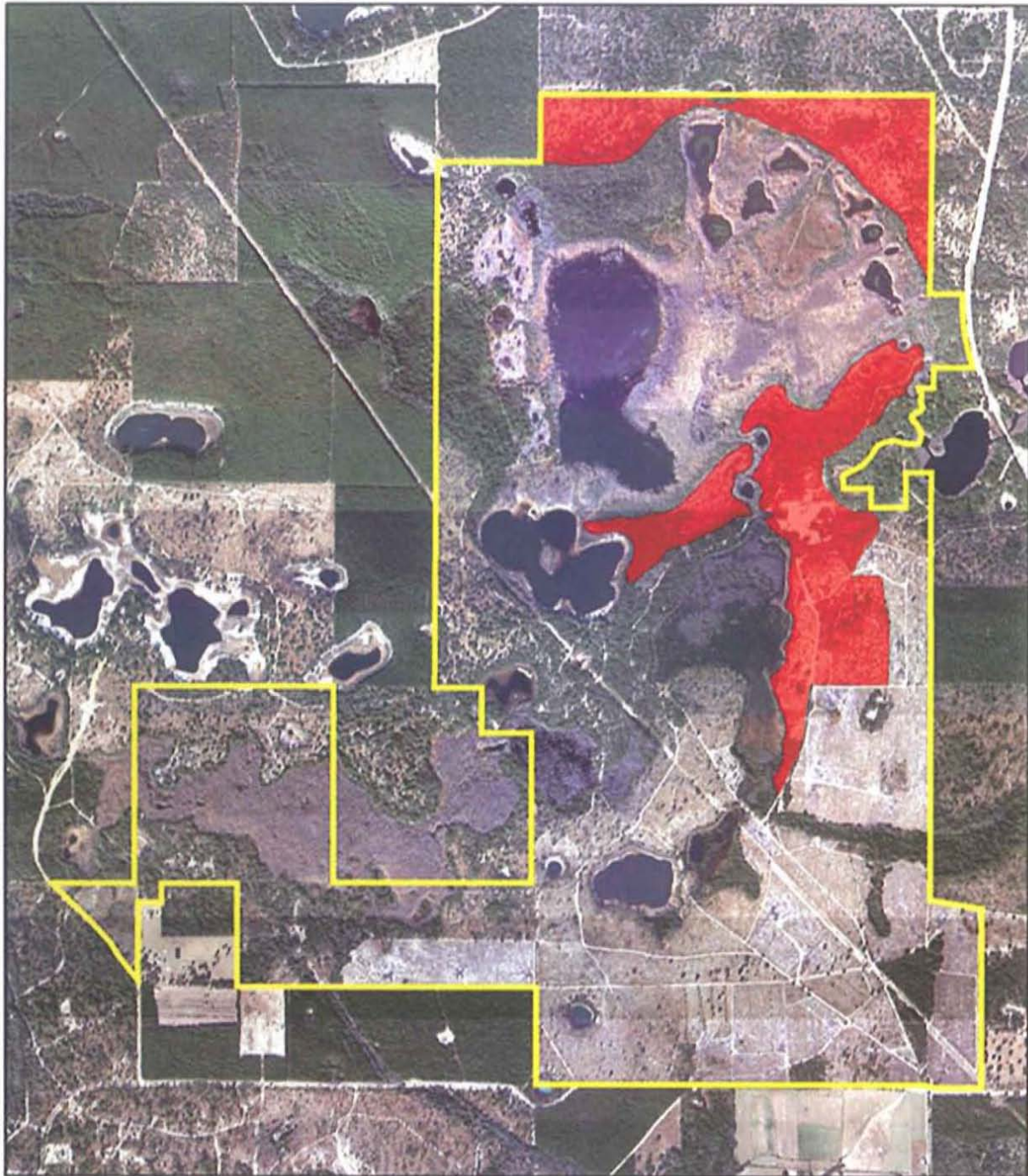
Figure 5. Long Leaf Pine Planting (202 acres) Winter 2012/2013

Figure 6. SHLMB 2012/2013 Hydric Pine Winter Burn (77 Acres)

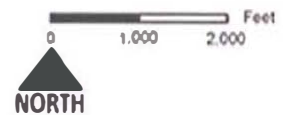
Representative Photos

**Figure 1. 2012 Burns at SHLMB (260 Acres)**

**Fall Burns 2012 at SHLMB**

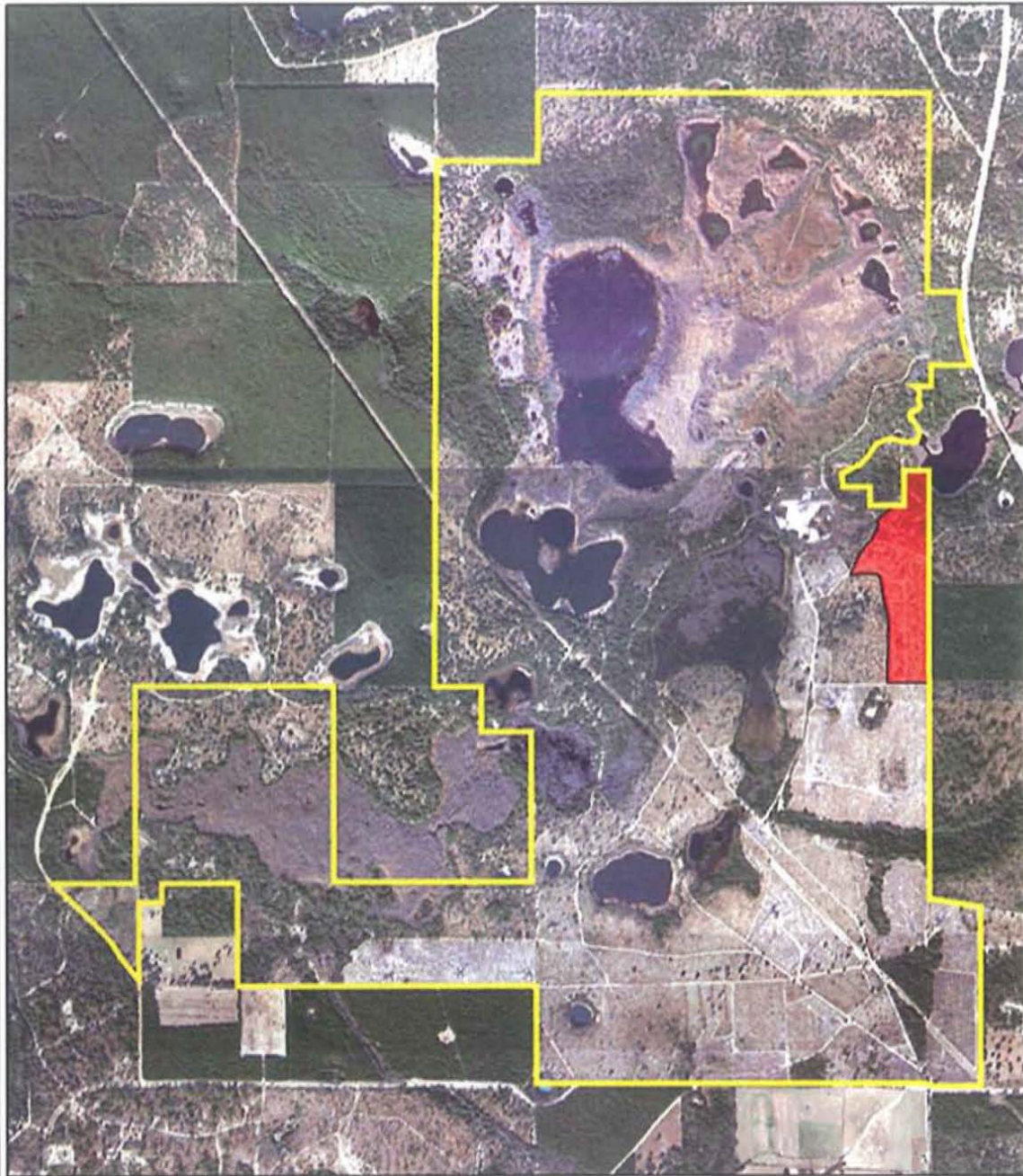


Northwest Florida Water Management District  
Sand Hill Lakes Mitigation Bank (SHLMB)  
Burn Areas (~260 Acres)  
Section 6, Township 1 North, Range 14 West  
Washington Co., Florida



**Figure 2. 2012 Hardwood Eradication (40 acres) (Management Unit 11 - 12 Restored Sandhill)**

**Hardwood Eradication - August, 2012**

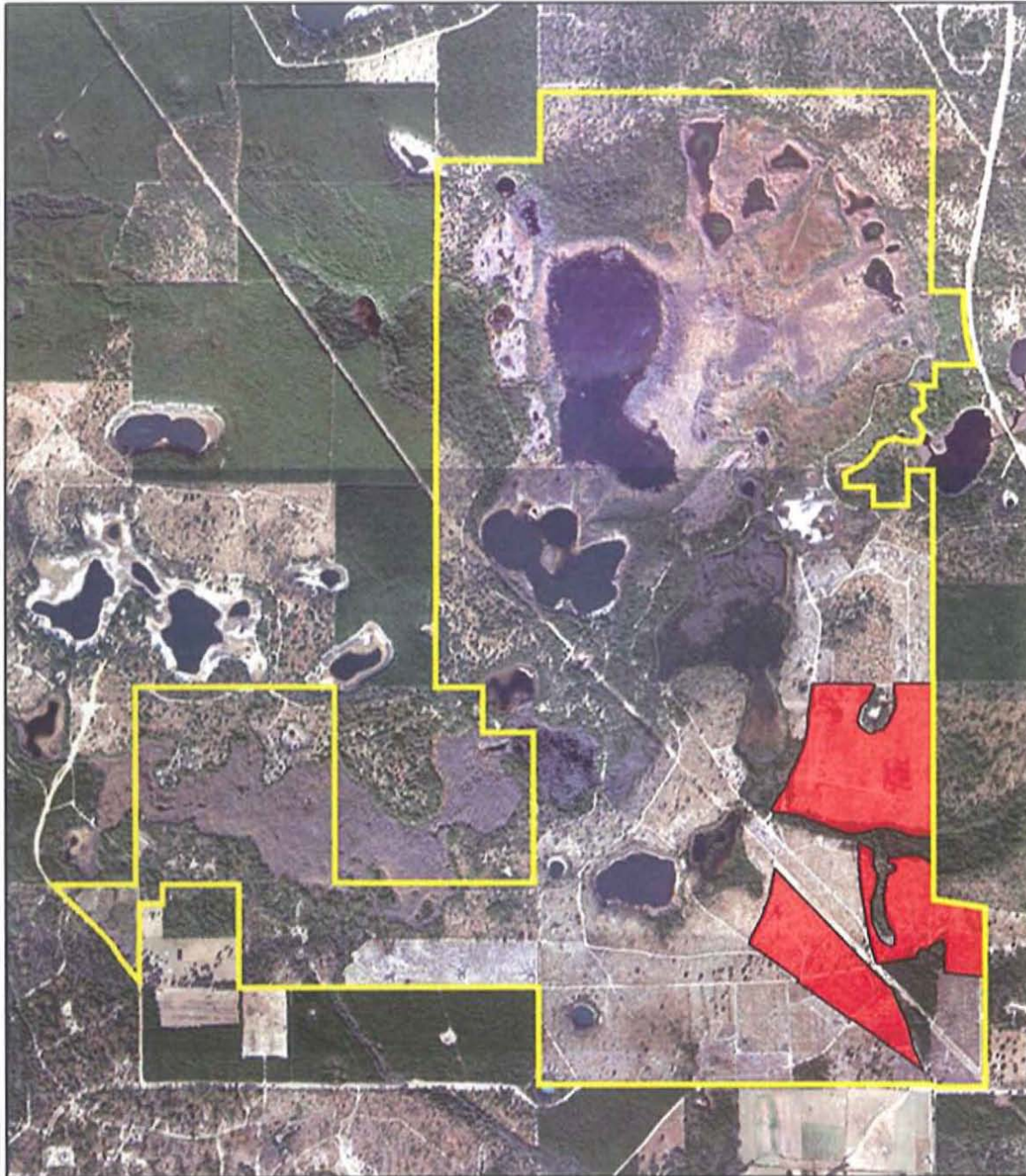


Northwest Florida Water Management District  
Sand Hill Lakes Mitigation Bank (SHLMB)  
Hardwood Eradication (~40 Acres)  
Section 6, Township 1 North, Range 14 West  
Washington Co., Florida



**Figure 3. 2012 Sand Pine Seedling Eradication (158 acres) (Management Unit 11, Restored Sandhill)**

**Sand Pine Seedling Eradication - August, 2012**



Northwest Florida Water Management District  
Sand Hill Lakes Mitigation Bank (SHLMB)  
Sand Pine Seedling Eradication (~158 Acres)  
Section 6, Township 1 North, Range 14 West  
Washington Co., Florida



Figure 4. Slash Pine Thinning/Wire grass/toothache grass planting areas (16 acres) (Winter 2012/2013).

### Slash Pine Thinning, Toothache & Wiregrass Planting - 2012



Northwest Florida Water Management District  
Sand Hill Lakes Mitigation Bank (SHLMB)  
Slash Pine Thinning,  
Toothache & Wiregrass Planting Areas (~16 Acres)  
Section 6, Township 1 North, Range 14 West  
Washington Co., Florida

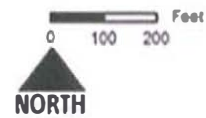
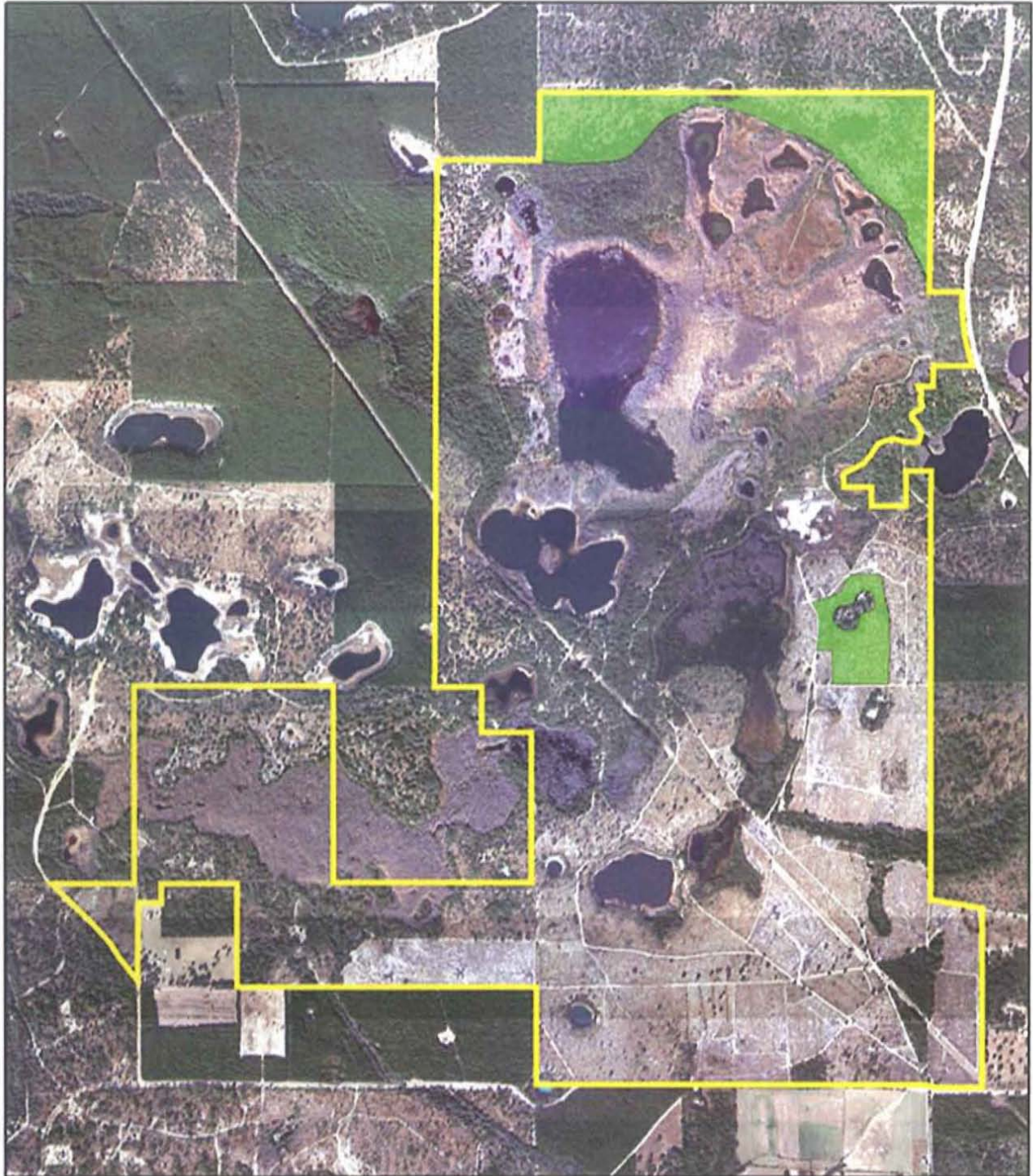


Figure 5. Long Leaf Pine Planting (202 acres) Winter of 2012/2013

### Longleaf Pine Seedling Planting - Winter 2012/13



Northwest Florida Water Management District  
Sand Hill Lakes Mitigation Bank (SHLMB)  
Planting Areas (~120 Acres, 303 trees/acre)  
Section 6, Township 1 North, Range 14 West  
Washington Co., Florida

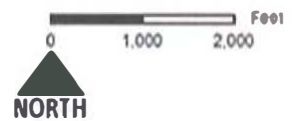
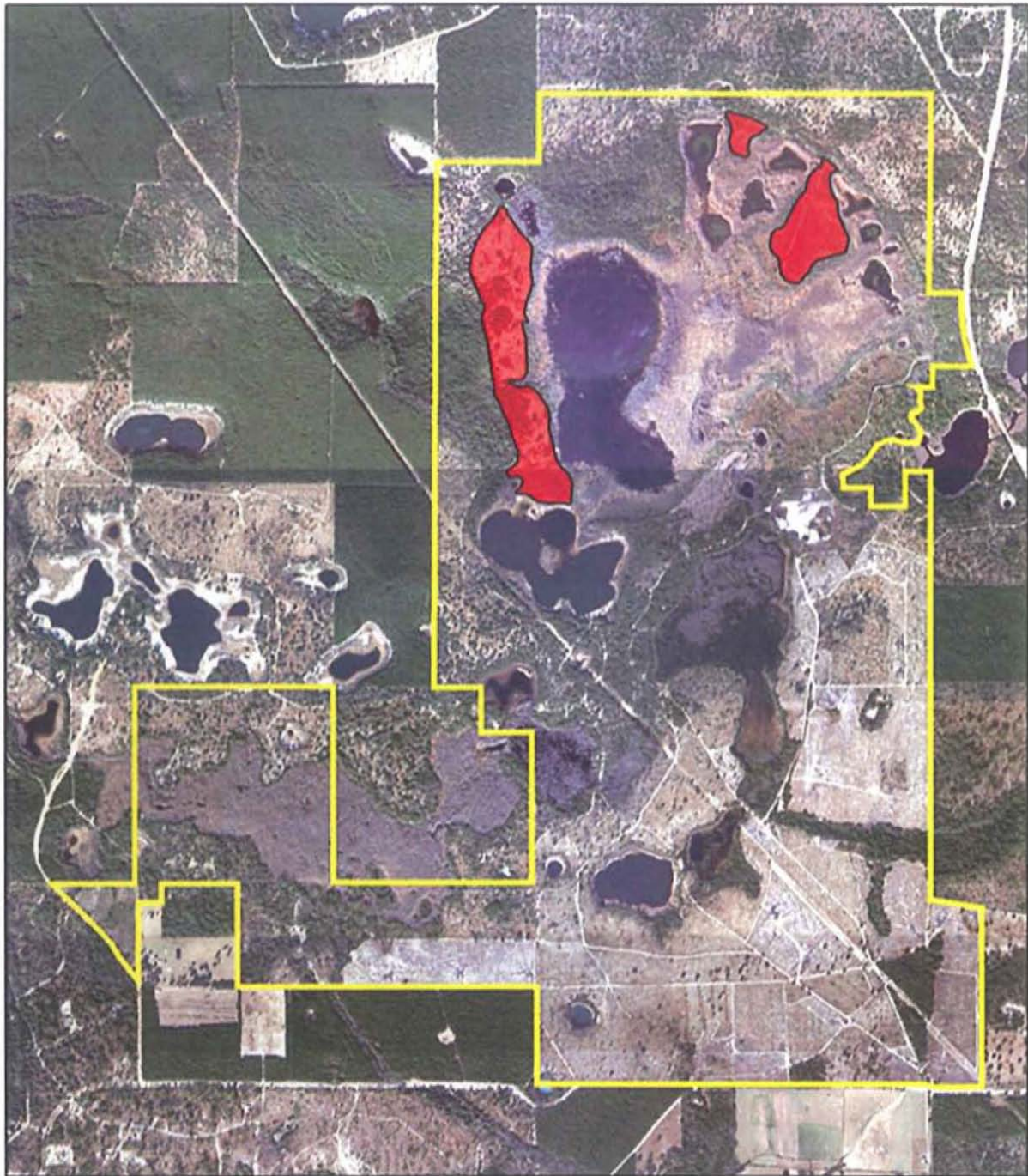


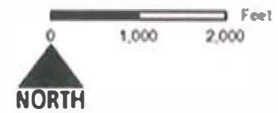


Figure 6. SHLMB 2012/2013 Hydric Pine Winter Burn (77 Acres)

### Planned Winter Burns 2012/2013



Northwest Florida Water Management District  
Sand Hill Lakes Mitigation Bank (SHLMB)  
Winter Burns (~77 Acres)  
Section 6, Township 1 North, Range 14 West  
Washington Co., Florida



## Representative Site Photos



M1: (09-24-2012) facing West, pond mostly dry, note smooth barked St. John's wort at edge.  
(Preservation)



M2: 09-26-2012 M2: Turkey Oak dominated sandhill, management Unit 10, facing North  
(Enhancement)



M3: 09-26-2012- Sandhill above Cat Pond facing North. Reduced LLP seedling density since fire in 2011 (Enhancement)



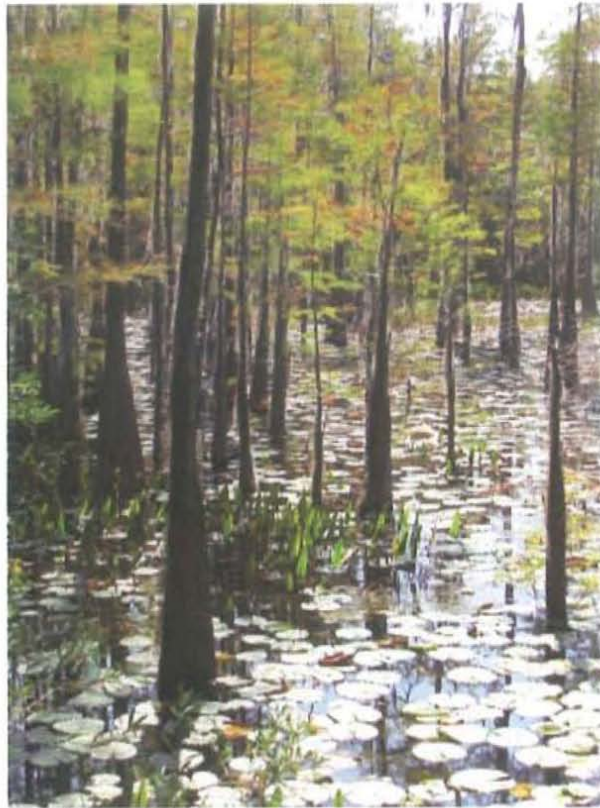
M3: 09-26-2012- Cat Pond facing West. Endangered Smooth-barked St. John's Wort in foreground (Preservation)



M4: 09-26-2012 facing Southwest. Sandhill Wiregrass and wildflowers, upland next to Little Deep Edge. (Restoration)



M5: 09-24-2012: facing South. Sandhill restored from slash pine plantation. Note dense wiregrass regeneration along with planted long leaf pine. (Enhancement)



M7: 10-09-2012 Dykes Mill Pond facing Southeast. Water lilies and cypress, pickerel weed, Preservation



M8: 09-28-2012. facing North, Water in pond, cypress appear healthy. Recruitment of cypress found in dry down areas surrounding pond. (Preservation).



M11: 09-27-2012 facing Southwest: Hydric Pine Flatwoods (Restoration), planted wire grass.



M10: facing West, 09-24-2012. Hydric Pine Flatwoods restored from Titi swamp. Gyro-Trac followed by intense shrub reduction. Planted wire and tooth ache grass and hydric pine flatwood wildflowers (Restoration)