

Sand Hill Lakes Mitigation Bank

16th Semi-Annual Report

5/23/12

RECEIVED

MAY 29 2012

OFFICE OF COMPILED LANDS
AND WILDLIFE RESOURCES



Permit No. 0227351-001

Submitted by David Clayton, NFWFMD Environmental Scientist and QMS

On behalf of Mr. Jon Steverson, Executive Director NFWFMD

Northwest Florida Water Management District

81 Water Management Drive,

Havana, FL 3233



Northwest Florida Water Management District
81 Water Management Drive, Havana, Florida 32333-4712
(850) 539-5999 • (Fax) 539-2777

May 25,, 2012

Ms. Victoria Tauxe
DEP-OSLER-MS 2500
2600 Blair Stone Rd
Tallahassee, FL 32399-2400

Re: Progress Report 16

Dear Ms. Tauxe,

Please accept this submittal as the 16th **semi-annual progress report** for the SHLMB.

Please provide a brief description of permit requirements met and extent of work completed since the previous report or since the permit was issued:

1. The annual FDEP site inspection occurred on April 20, 2012. The SHLMB site inspection was conducted by Ms. Vicki Tauxe, Ms. Kristina Evans of the Mitigation Banking section, and Ms. Caitlin Elam from the FDEP WEDS section. The site inspection included a review of the upland and wetland restoration areas and preservation sites. The SHLMB was found to be in compliance with permit conditions.
2. Staff gauges were monitored from January to June in accordance with Specific Condition 25, Management and Maintenance, and Attachment H, Monitoring (Figure9).
3. In accordance with Specific Condition 8 (Protection and Preservation) and Attachment A, passive recreation as well as fishing and spring gobbler season continued at the SHLMB without incident. The water levels with the lakes remain low due to the continued drought. Most readings were below the staff gages and several of the Green Ponds, Power Line Pond and Garret pond are at near or total drawdown. Water levels continue to be monitored monthly and will be included in annual report (Figure9).
4. In accordance with Specific Condition 8, security and law enforcement continues at the bank without incident.
5. In accordance with Specific Condition 22, 23 and 25e, (Final and Interim Release Criteria and Management and Maintenance), surveys for feral hogs and exotic vegetation were conducted during a site visit on May 23, 2012. No hogs, signs of hog damage or exotic species were observed.
6. In accordance with Specific Condition 10a (Community restoration), sand pine seedlings that emerged post sand pine harvest were eradicated within the 173 acres of former sand pine plantation that is currently being restored to sand hills. Site activities were initiated on April 20, 2012 and completed by April 27, 2012 (Figure 10).
7. Copy of Credit Leger (See Attachment).

Restoration activities anticipated within the next 6 months:

1. Shrubs within the hydric pine flatwoods, Management Unit 5, (165 acres) will continue to be treated as needed with herbicide to ensure shrub coverage is limited to coppice sprouts as found from the last previous fire in accordance with Specific Condition 10c, 22, 23, and 25e (Figure 11).
2. In accordance with Specific Condition 10a, the planted slash pine plantation will be further thinned to meet permit conditions of less than 200 trees per acre in Management Unit 3 Hydric Pine Planation. Area will be planted with wire grass and direct seeded in the winter of 2012/2013 in accordance with the planting plan, Attachment D.
3. Under the guidance of the QMS, and in accordance with Specific Condition 10a, an additional 16 acres in Management Unit 2, adjacent to Management Unit 3 will be thinned to less than 200 trees per acre and planted with wire grass and tooth ache grass in winter 2012/2013. This will increase the onsite hydric pine flatwoods restoration to 181 acres. These areas historically were hydric pine flatwoods and have received a number of burns to reduce shrub cover. As the shrub layer has been reduced by fire, pine flatwoods herbaceous species have returned. Thinning pines and further reducing shrub cover and adding wire grass will allow this area to carry fire more easily return to a herbaceous species dominated hydric pine flatwoods.
4. In accordance with Specific Condition 25 and Attachment H, Monitoring, Water Level gauges will continue to be measured for the remainder of 2012 (Figure 9).
5. . In accordance with Specific Condition 22, 23 and 25e, (Final and Interim Release Criteria and Management and Maintenance), surveys for feral hogs and exotic vegetation will be conducted quarterly.
6. Summer and fall burns will be conducted in accordance with the burn plan, Attachment E, Fire Management Plan.

Please provide a brief description of problems encountered and solutions undertaken:

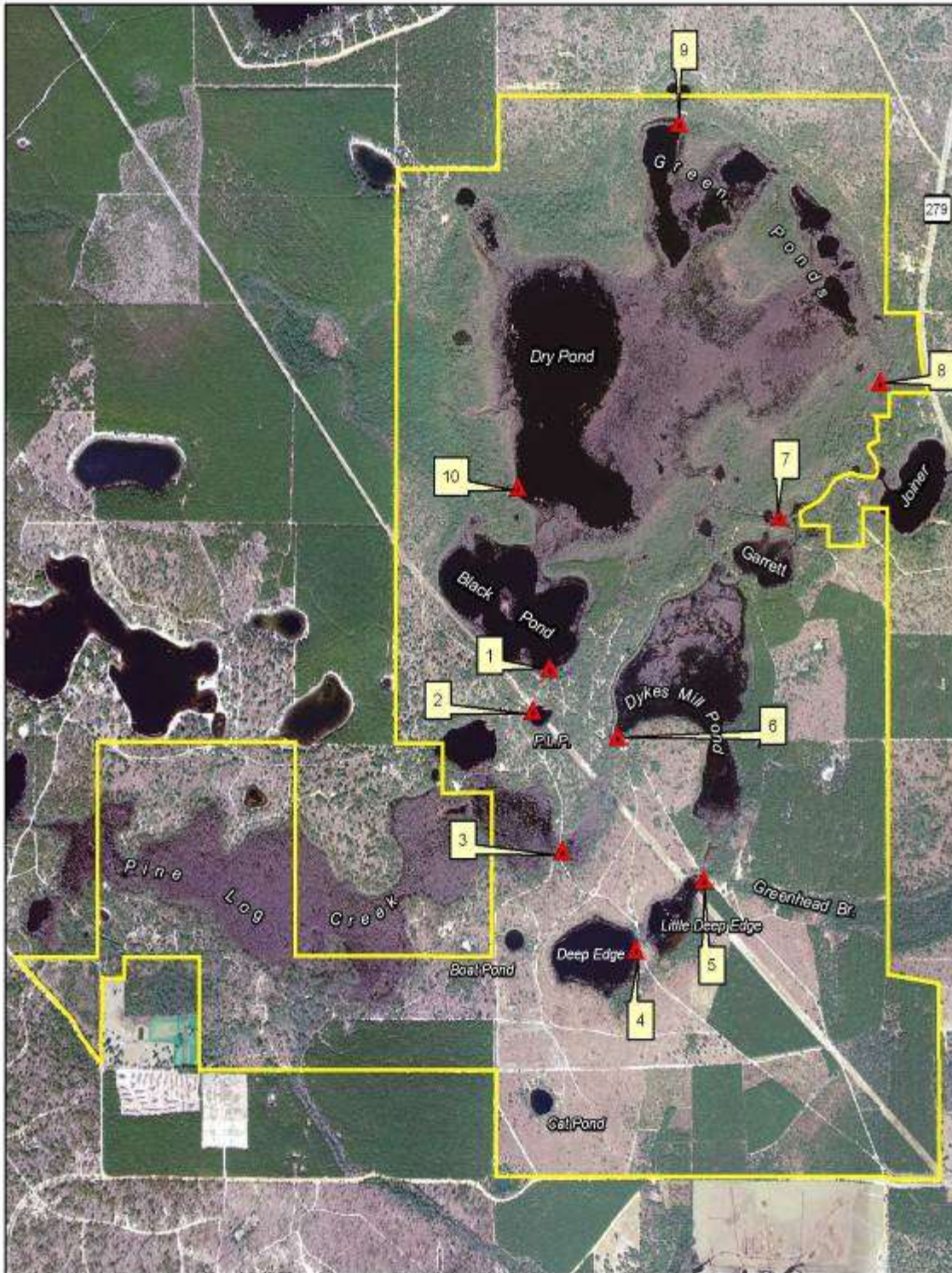
No problems were observed at the SHLMB this year. The site continues to develop and thrive.

Certification

I certify that this report represents true accurate and representative description of the activities and site conditions at the time of this report.

David Clayton
Environmental Scientist
Qualified Mitigation Supervisor
NFWFMD
81 Water Management Drive
Havana, FL 32333

Figure 9 - Water Level Staff Gage Locations



▲ = Staff Gage (Installed 2005)



Figure 10. Sand Pine Reduction Areas (173 Acres)



North ^

Figure 11. Hydric Pine Flatwoods Restoration Areas



North ^

Site Photos



The Whale near Dry Pond: Hydric Pine Flatwoods Restoration (05/23/12)



Hydric Pine back side of Dry Pond Flatwoods Restoration (05/23/12)



Hydric Pine Flatwoods Restoration, 5 acre, adjacent to Green Ponds: 5/23/12



Rayless Sunflower 5 months post planting (*Helianthus radula*) 5/23/12



Sneezeweed 5 months post planting, 24" (*Helenium autumnale*) 5/23/12



Variable leaved sunflower 5 months post planting, 12" (*Helianthus heterophyllus*) 5/23/12



Little Deep Edge Pond 5/23/12



Garret Pond 5/23/12



Black Pond 5/23/12



Deep Edge Pond 5/2312



Sandhill restoration: Slash pine plantation to Sandhill



Seedling Sand Pine Removal, Sandhill Restoration 4/2712