



Northwest Florida Water Management District

81 Water Management Drive, Havana, Florida 32333-4712
(U.S. Highway 90, 10 miles west of Tallahassee)

Jonathan P. Steverson
Executive Director

Phone: (850) 539-5999 • Fax: (850) 539-2777

June 18, 2013

Ms. Victoria Tauxe
DEP-OSLER-MS 2500
2600 Blair Stone Rd
Tallahassee, FL 32399-2400

RECEIVED

JUN 28 2013

OFFICE OF SUBMERGED LANDS
AND ENVIRONMENTAL RESOURCES

Re: Progress Report 18

Dear Ms. Tauxe,

Please accept this submittal as the 18th semi-annual progress report for the SHLMB. This report was written in accordance with Specific Condition 27.

Please provide a brief description of permit requirements met and extent of work completed since the previous report:

1. Fishing and hunting continued at the SHLMB throughout the winter and spring without incident in accordance with Specific Condition 8 and Attachment A of the permit.
2. In accordance with Specific Condition 8, security and law enforcement continued at the bank throughout the spring. No violations have been observed.
3. Surveys for feral hog damage continued during the spring of 2013 SHLMB in accordance with Specific Condition 22. No hog damage was observed.
4. Prescribed burning continued at the SHLMB. A total of 417 acres were burned in accordance with the approved burn plan, Specific Condition 11, Attachment E. These include 307 acres of sandhill and mesic oak hummock and 110 acres of hydric pine flatwoods (Figure 1).
5. Bahia grass was eradicated from the road removal area between Deep Edge and Little Deep Edge and adjacent to Deep Edge in accordance with Specific Condition 22 and 23 (Figure 2).
6. Torpedo grass was eradicated at the boat launches associated with the Green Ponds, Dry Pond and Garret Pond in accordance with Specific Condition 22 and 23 (Figure 2)
7. Nuisance shrubs, primarily titi and fetterbush were treated in the hydric pine flatwoods in accordance with Specific Condition 10c (Figure 2).
8. Sand pine seedlings were treated in 75 acres of sand hill restoration area near Cat Pond (Figure 3).

GEORGE ROBERTS
Chair
Panama City

JERRY PATE
Vice Chair
Pensacola

JOHN ALTER
Malone

GUS ANDREWS
DeFuniak Springs

STEPHANIE BLOYD
Panama City Beach

GARY CLARK
Chipley

JON COSTELLO
Tallahassee

NICK PATRONIS
Panama City Beach

BO SPRING
Port Saint Joe

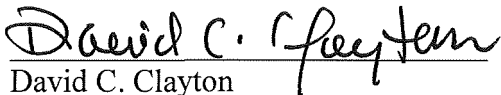
Restoration activities anticipated within the next 6 months:

1. Surveys for nuisance species will continue in fall of 2013 in accordance with specific condition 22.
2. Water Level gauges will continue to be measured in 2013 in accordance with Specific Condition 12.
3. Fall monitoring will be conducted in accordance with Specific Condition 28.

Please provide a brief description of problems encountered and solutions undertaken:
No problems have occurred.

Certification

I certify that this report represents true accurate and representative description of the activities and site conditions at the time of this report. This semi-annual report was written in accordance with Specific Condition 27, of the permit.



David C. Clayton

Restoration Ecologist

Environmental Scientist

Qualified Mitigation Supervisor

Enclosures:

Figure 1. Prescribed burning at SHLMB from January to March 2013.

Figure 2. Nuisance shrub and exotic grass eradication (143.98 acres)

Figure 3. 2013 Sand Pine Seedling Eradication (101 acres) (Management Unit 11, (Restored Sandhill)

Figure 4-13 Representative Site Photos

Prescribed Fire: January - March, 2013

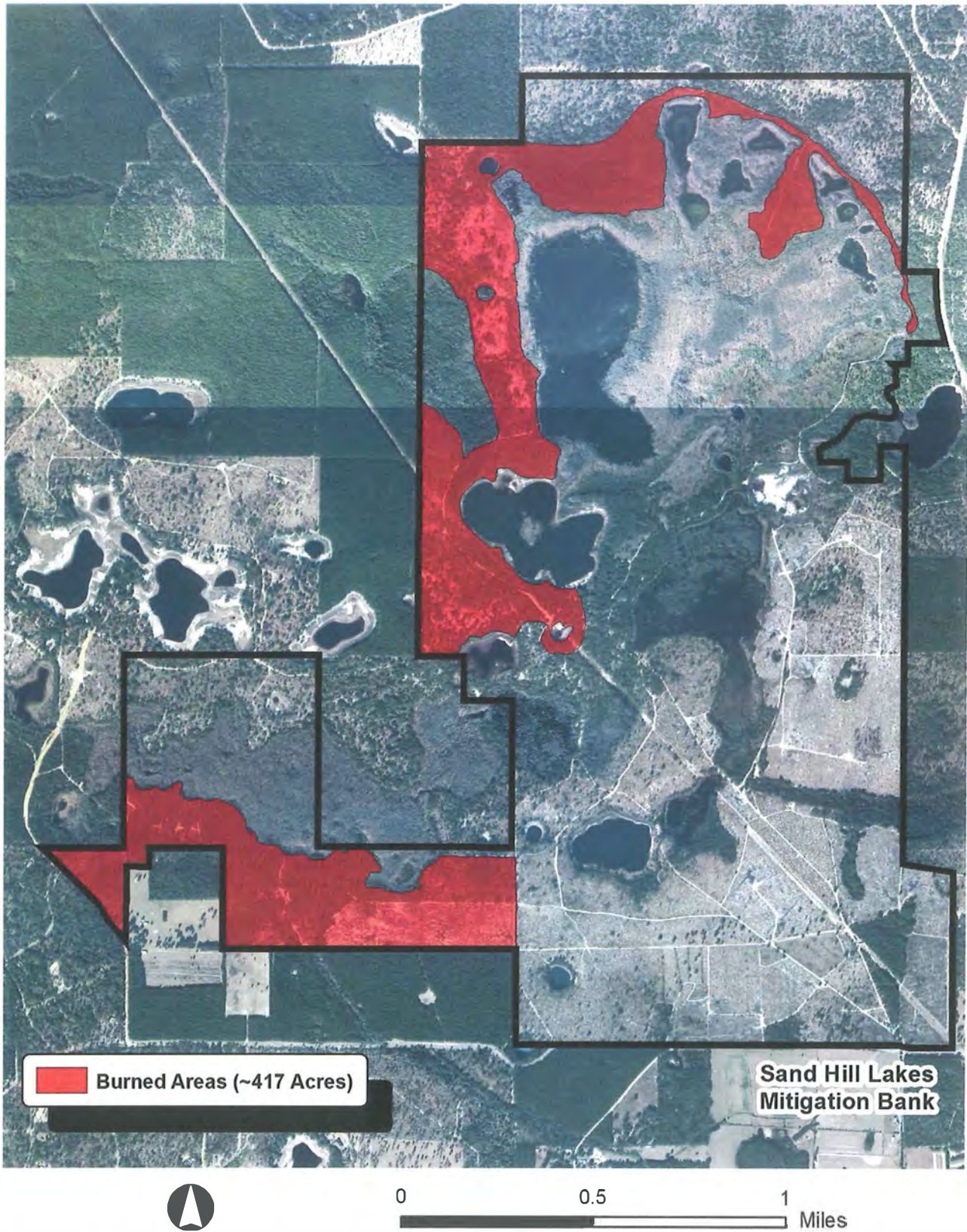
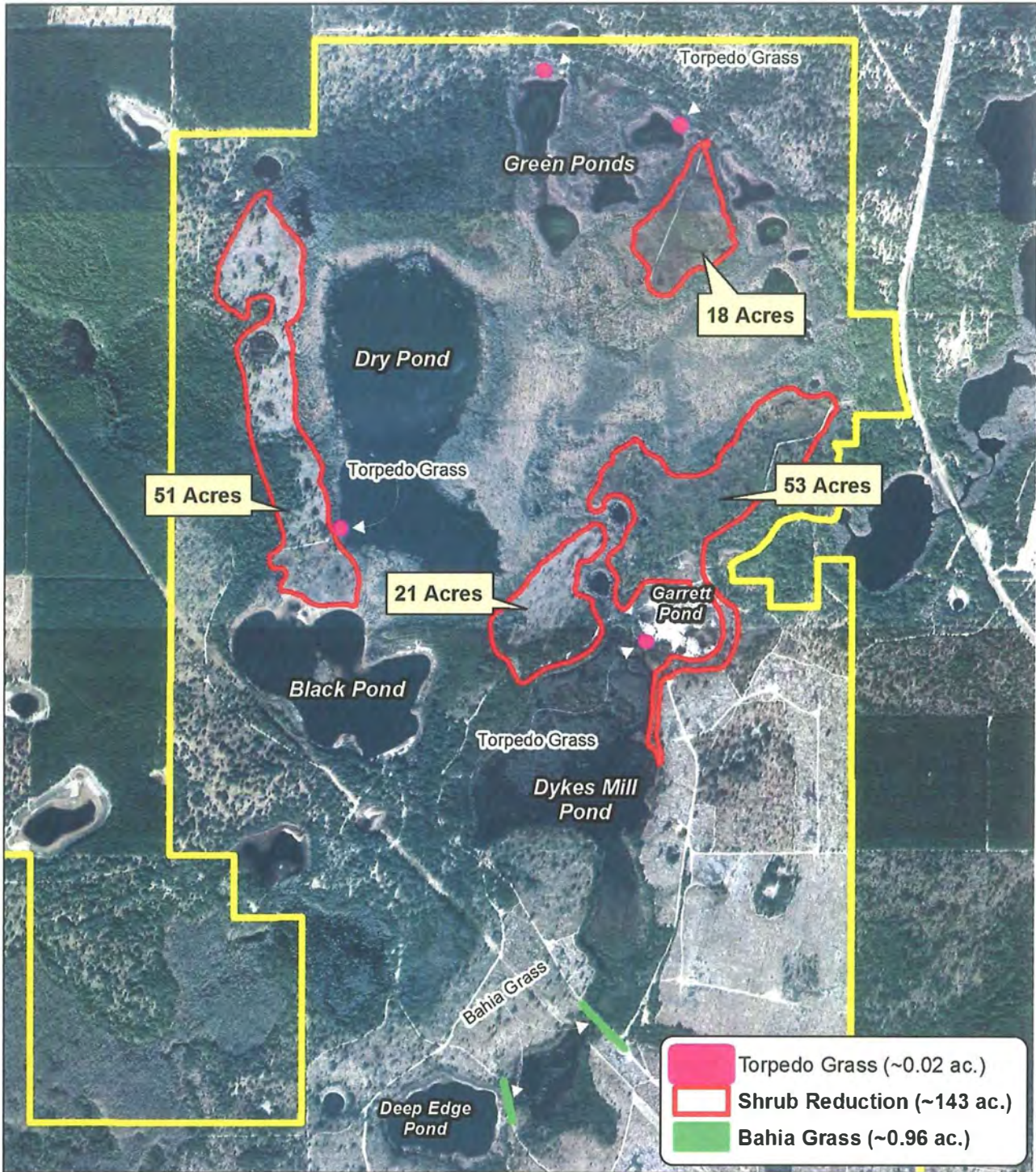


Figure 1. Prescribed burning at SHLMB from January to March 2013.

SHLMB Treatments



Northwest Florida Water Management District
 Sand Hill Lakes Mitigation Bank (SHLMB)
 Shrub Reduction - ~143 Acres
 Bahia Grass Treatment - ~0.96 Acres
 Torpedo Grass - ~0.02 Acres
 Section 6, Township 1 North, Range 14 West
 Washington Co., Florida



Figure 2. Nuisance shrub and exotic grass eradication (143.98 acres).

Sand Pine Eradication Area (~75 Acres)



Northwest Florida Water Management District
Sand Hill Lakes Mitigation Bank (SHLMB)
Section 6, Township 1 North, Range 14 West
Washington Co., Florida

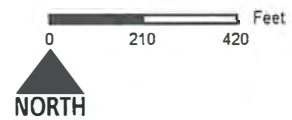


Figure 3. Sand pine seedling eradication



Figure 4. 6/12/13. Facing West. 12 Acre hydric pine flatwoods adjacent to Black and Dry Pond. Note: very little shrub coverage.



Figure 5. 6/12/13. Facing West. Hydric Pine Flatwoods, 38 acres near Dry Pond, note chalky bluestem starting to be reduced in cover.



Figure 6 4/24/13. Facing North: Rose Pogonia Orchid, state threatened. Burned seepage slop at Little Deep Edge Pond, found along with White Topped Pitcher Plant (State Endangered) and Fever tree (State Threatened Species).



Figure 7 4/24/13. Facing East. Pink sundew at the Peninsula (16 acre) hydric pine flatwoods restoration area.



Figure 8 4/24/13. Facing East. Baby gator near Pine log creek headwaters.



Figure 9 Facing North. 6/12/13 Hydric Pine Flatwoods. Herbicide work conducted on 155 acres that reduces shrub cover in promote grass growth. This is a 48 acre site near Dry and Pinelog creek.



Figure 10. Facing North. 6/12/13. 38 acre hydric pine flatwoods, rayless sunflower In the wildflower planting area.

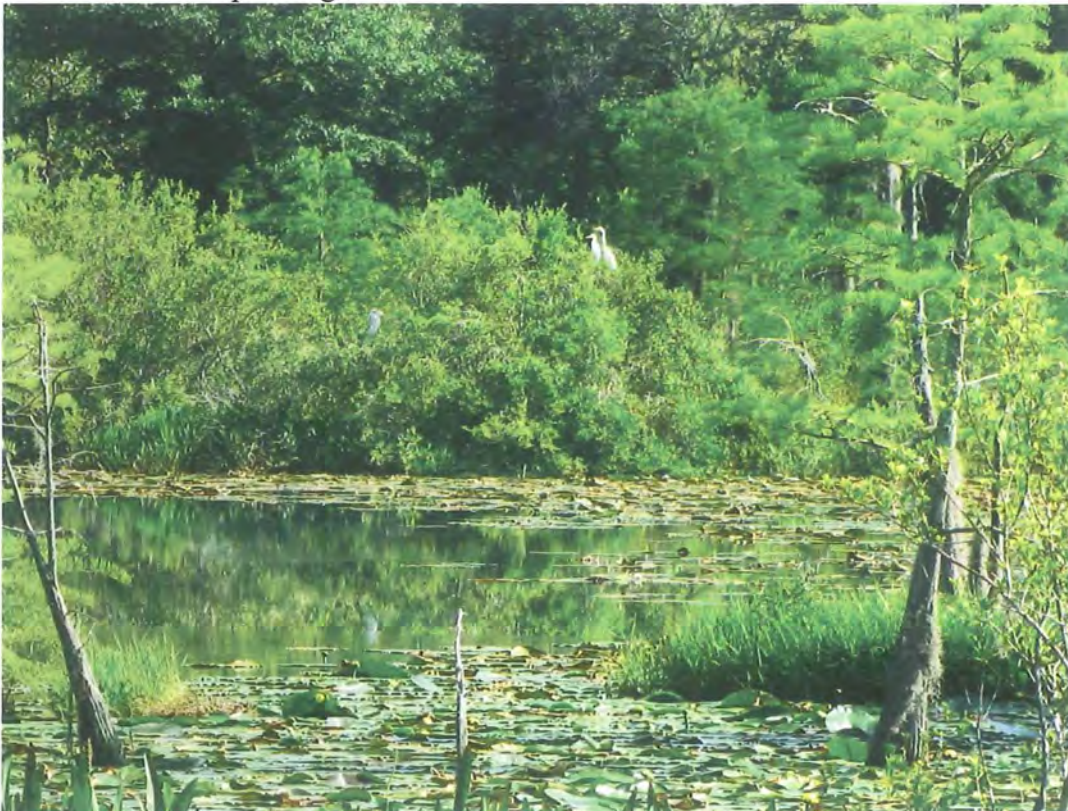


Figure 11. Facing Northeast. 6/24/13. Little Deep Edge Rookeries, this year there are Several pairs of Great Egrets, little blue herons, snowy and cattle egrets utilizing three different shrub islands.



Figure 12. Facing West. 6/24/13. Sand pine seedling eradication area (101 acres) Completed.



Figure 13. Facing West: 6/24/13 Sandhill adjacent to Deep Edge pond