

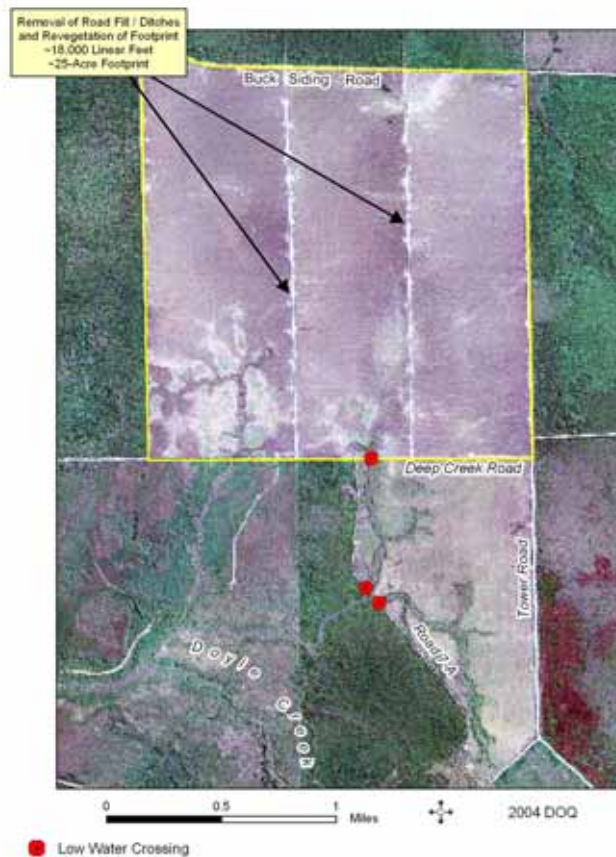
Doyle Creek – 2006 Monitoring
CORPS Permit No. SAJ-2004-706 (NW-TLZ)
[SR 65 Mitigation]

CORPS Permit No. SAJ-2004-706 (NW-TLZ) authorized shoulder work on SR 65 in Franklin Co. from US 98 to the Franklin / Liberty Co. line. Mitigation for wetland impacts associated with this permit is being accomplished by the NFWFMD at Doyle Creek, located approximately two miles east and north of the impacts within the Tates Hell State Forest (see map below).

As described by mitigation plans submitted to the CORPS, approximately 18,000 feet of logging roads and adjacent ditching have been removed. The roads and ditches were eliminated by pushing road-fill back into adjacent ditches and grading to natural, pre-disturbance elevations. Additionally, three hardened, low-water-crossings were installed to reestablish natural hydrologic flows. The footprint of the eliminated logging roads (approximately 25 acres) will be revegetated with cypress and wiregrass when site conditions and availability of wiregrass plugs allow.

NFWFMD staff visited the mitigation site multiple times in 2006. No nuisance or exotic vegetation, or illegal trash dumping has been noted. Ecologically, the site appears healthy with abundant wetland vegetation. Representative photographs of the site are shown below.

Doyle Creek Mitigation Area





Low-Water-Crossing Construction



Removal of Road and Ditch



Removal of Road and Ditch



Low-Water-Crossing