



Northwest Florida Water Management District

81 Water Management Drive, Havana, Florida 32333-4712

(U.S. Highway 90, 10 miles west of Tallahassee)

Phone: (850) 539-5999 • Fax: (850) 539-2777

Jonathan P. Stevenson
Executive Director

January 2, 2014

Ms. Victoria Tauxe
DEP-OSLER-MS 2500
2600 Blair Stone Rd
Tallahassee, FL 32399-2400

Re: Progress Report 19

Dear Ms. Tauxe,

Please accept this submittal as the 19th semi-annual progress report for the SHLMB. This report was written in accordance with Specific Condition 27.

Please provide a brief description of permit requirements met and extent of work completed since the previous report:

1. Fishing and hunting continued at the SHLMB throughout the summer and fall without incident in accordance with Specific Condition 8 and Attachment A of the permit.
2. In accordance with Specific Condition 8, security and law enforcement continued at the bank throughout the summer and fall. No violations have been observed.
3. Surveys for feral hog damage continued during the fall of 2013 SHLMB in accordance with Specific Condition 22. Minor hog damage was observed in 3 acre hydric pine flatwoods restoration site. FWC was notified.

Restoration activities anticipated within the next 6 months:

1. Surveys for nuisance species will continue in fall of 2014 in accordance with specific condition 22.
2. Water Level gauges will continue to be measured in 2014 in accordance with Specific Condition 12.
3. A total of 20 acres of wire grass plugs planted on 6' centers (24,200 plants) will be installed in January within the sand hill restoration area adjacent to the check station (Figure 1).
4. Approximately 300 acres of sandhill will be burned during the winter/spring 2014.
5. The semi-annual monitoring will be conducted in accordance with Specific Condition 28.

GEORGE ROBERTS
Chair
Panama City

JERRY PATE
Vice Chair
Pensacola

JOHN ALTER
Malone

GUS ANDREWS
DeFuniak Springs

STEPHANIE BLOYD
Panama City Beach

GARY CLARK
Chipley

JON COSTELLO
Tallahassee

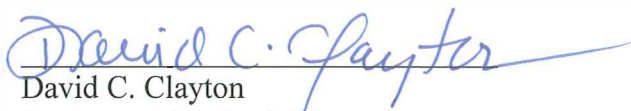
NICK PATRONIS
Panama City Beach

BO SPRING
Port Saint Joe

Please provide a brief description of problems encountered and solutions undertaken:
No problems have occurred.

Certification

I certify that this report represents true accurate and representative description of the activities and site conditions at the time of this report. This semi-annual report was written in accordance with Specific Condition 27, of the permit.

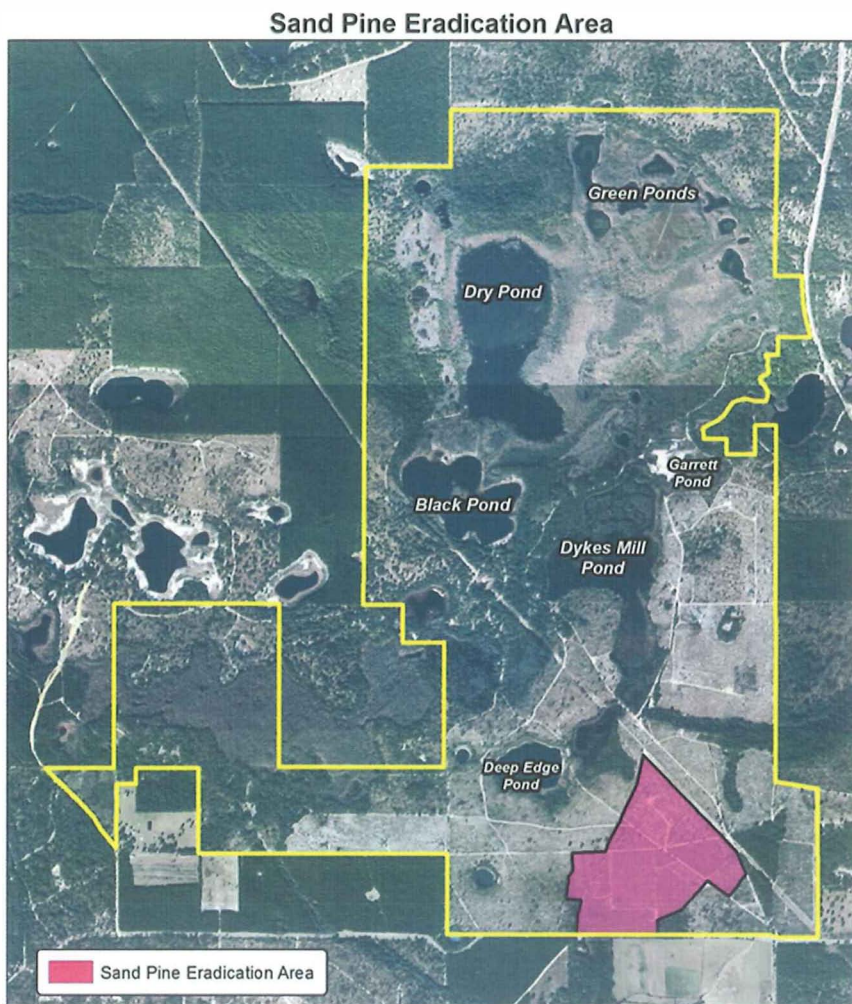


David C. Clayton
Restoration Ecologist
Environmental Scientist
Qualified Mitigation Supervisor

Enclosures:

- Figure 1. Wiregrass planting area in Sandhill (Winter 2014)
- Figure 2-11 Representative Site Photos

Figure 1. Upland Wiregrass Planting in Sandhill (20 acres)



Northwest Florida Water Management District
Sand Hill Lakes Mitigation Bank (SHLMB)
Sand Pine Eradication - 100 Acres
Section 6, Township 1 North, Range 14 West
Washington Co., Florida





Figure 2. 08-22-13. Facing North. 16 acre hydric pine flatwoods restoration backside of Dry Pond.



Figure 3. 09-15-13. Facing Northwest. 38 acre hydric pine flatwoods restoration, adjacent to pine log channel



Figure 4. 08-22-13. Facing South. 16 acre hydric pine flatwoods restoration (Peninsula)



Figure 5. 08-22-13. Facing East. 12 acre hydric pine flatwoods restoration (Whale)



Figure 6. 08-22-13. Facing South. 16 acre hydric pine flatwoods restoration (Peninsula)



Figure 7. 10-10-13. Facing East. Dry Pond



Figure 8. 06-19-13. Facing EastDeep Edge Pond



Figure 9. 07-26-13. Facing EastDeep Edge Pond

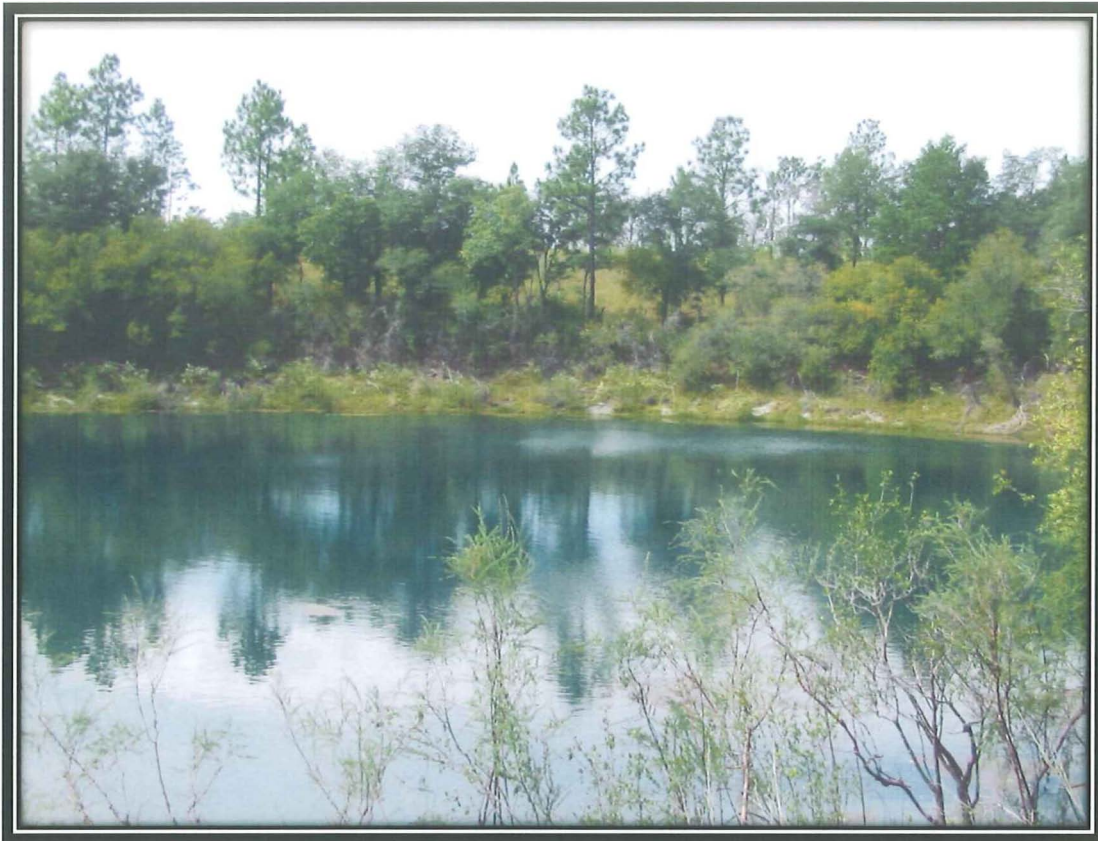


Figure 10. 09-17-13 Facing West. Cat Pond



Figure 11. 09-17-13 Facing East. Sandhill adjacent to Deep Edge Pond.