



Douglas E. Barr
Executive Director

Northwest Florida Water Management District

81 Water Management Drive, Havana, Florida 32333-4712
(U.S. Highway 90, 10 miles west of Tallahassee)

(850) 539-5999 • (Fax) 539-2777

June 16, 2010

Ms. Victoria Tauxe
DEP-OSLER-MS 2500
2600 Blair Stone Rd
Tallahassee, FL 32399-2400

RECEIVED

JUN 17 2010

OFFICE OF SUBMERGED LANDS
AND ENVIRONMENTAL RESOURCES

Re: Progress Report H¹²

Dear Ms. Tauxe,

Please accept this submittal as the H¹²th **semi-annual progress report** for the SHLMB.

Please provide a brief description of permit requirements met and extent of work completed since the previous report or since the permit was issued:

1. Fishing continues at the SHLMB without incident. The water levels at the lakes are back to pre-drought levels, except for cat pond and boat pond. Water regularly flows out of Little Deep Edge, through the road removal area and into Greenhead branch.
2. In accordance with Specific Condition 8, security and law enforcement continues at the bank without incident.
3. Surveys for feral hogs continued during the spring 2010. Very minor feral hog evidence was observed adjacent to Dry Pond and the "island: wet flatwoods restoration area. Trapper was called in but no hogs captured.
4. A total of 20,000 tooth ache grass tublings were planted adjacent to the Dry Pond parking area in wet flatwoods restoration area.
5. Thirty acres of upland wire grass tublings (145,200) were planted in harvested sand pine areas adjacent to Green Head Branch (Figure 11)
6. Thirty acres of wet flatwood wire grass tublings (145,000) were planted in the whale (12 acres) and portions of the 38 acre polygon adjacent to the whale and the Dry Pond Parking area (Figure 11).
7. A total of 10,000 mixed wet flatwood species tublings were planted on 6" centers within 8 acres adjacent to Dry Pond (Figure 11).

GEORGE ROBERTS
Chair
Panama City

PHILIP K. McMILLAN
Vice Chair
Blountstown

STEVE GHAZVINI
Secretary/Treasurer
Pensacola

PETER ANTONACCI
Tallahassee

STEPHANIE BLOYD
Panama City Beach

JOYCE ESTES
Eastpoint

RALF RISH
Port St. Joe

TIM NORRIS
Santa Rosa Beach

JERRY PATE
Pensacola

8. Survival was excellent one year after planting for the plants established within the road-fill removal between Little Deep Edge and Green Head Branch (May 7, 2009). Each site was planted with 15 fetter bush (*Lyonia lucida*), 15 dog hobble (*Leucothoe racemosa*) and 40 high bush blue berries (*Vaccinium corymbosum*) and almost all appeared living and healthy.
9. Results of the ULW treatment were quite successful in reducing oak coverage within the sand hills. A total of 546 acres were treated in June of 2009 (Figure 11).
10. A total of 100 acres of summer burns are planned for the SHLMB.

Restoration activities anticipated within the next 6 months:

1. Surveys for nuisance species will continue in summer and fall of 2010.
2. Erosion area #3 was identified with minor Bahia grass cover on June 10, 2010 (Figure 4) and will be spot treated as needed.
3. Nuisance shrubs within the one hundred sixty five acres of restored wet flatwoods will be continued to be treated in 2010.
4. Water Level gauges will continue to be measured in 2010 (Figure 9).
5. A co-operative seed bank study is underway between UF Graduate Student David Mitchell and the District. David is working on evaluating seed bank post Gyro-Trac to help determine the viability of the seed bank for his Masters' Thesis. The study is currently underway and results should be forthcoming by December of this year.
6. A native grass has been identified for potential use in soil stabilization within sand hill sites. The District and UF will work together to better evaluate this grass. Currently 3 other native grasses are being evaluated for wetland soils stabilization on other District Lands.

Please provide a brief description of problems encountered and solutions undertaken:

Restoration activities continue at the SHLMB. An additional 290,000 wet flatwoods and sand hill wire grass tublings are currently being grown for outplanting in the winter of 2010/2011. In addition, 200,000 mixed wet flatwood species are being grown to insure diversity on the SHLMB. Representative site photos are included for your review.

Thank you for your consideration of this submittal. If you have any question or comments please feel free to contact me at 850-539-5999.

Sincerely,

David Clayton
QMS

Enclosures: Figure 4 Erosion Stabilization Sites (1-6 with Bahia Grass Cover)
Figure 9 Water Level and Staff Gauge Locations
Figure 12 2009-2010 Wetland and Upland Wiregrass and Wet Flatwood Species Planting Site Photos

Figure 4 - Erosion Stabilization Sites

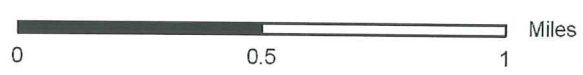
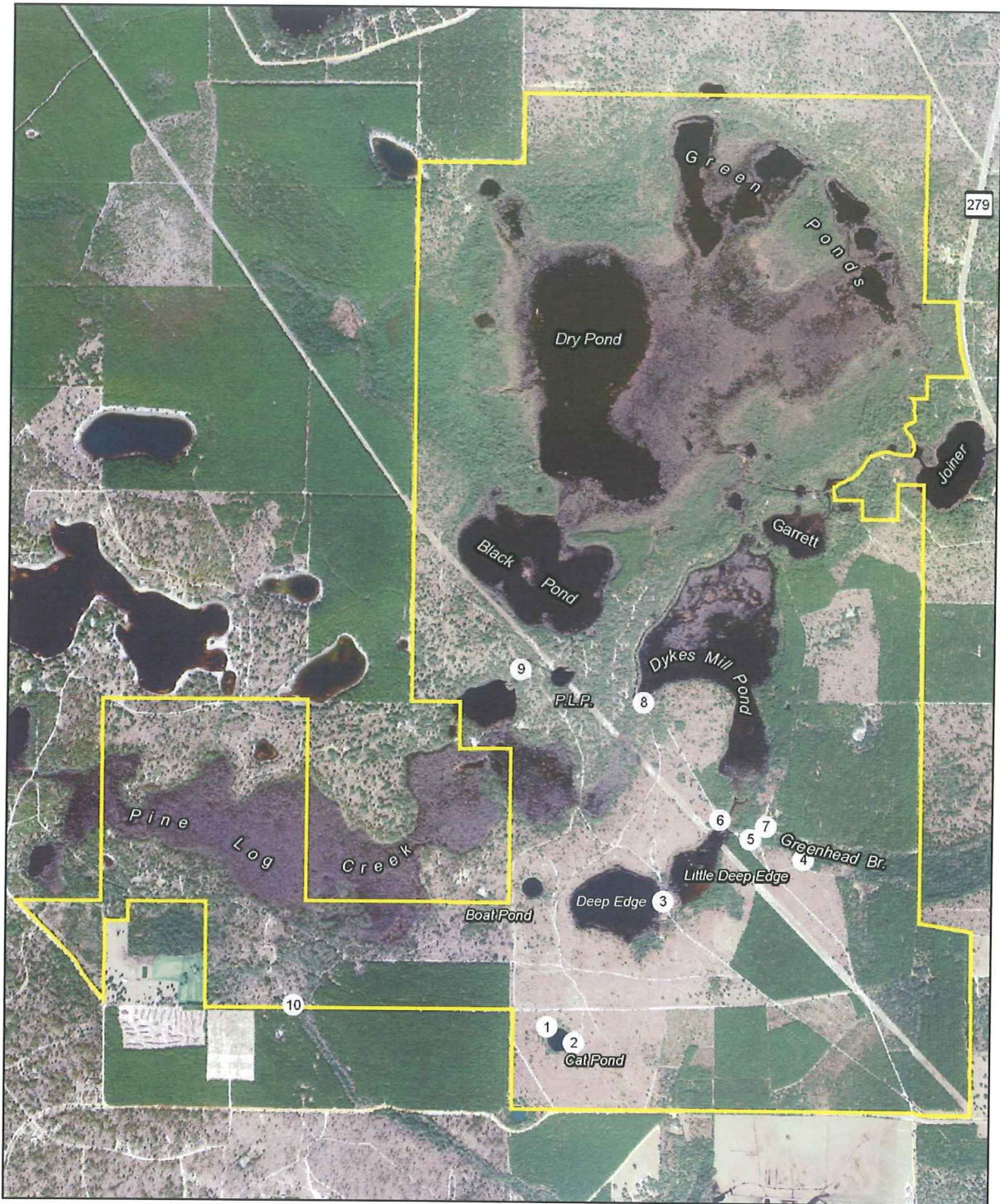
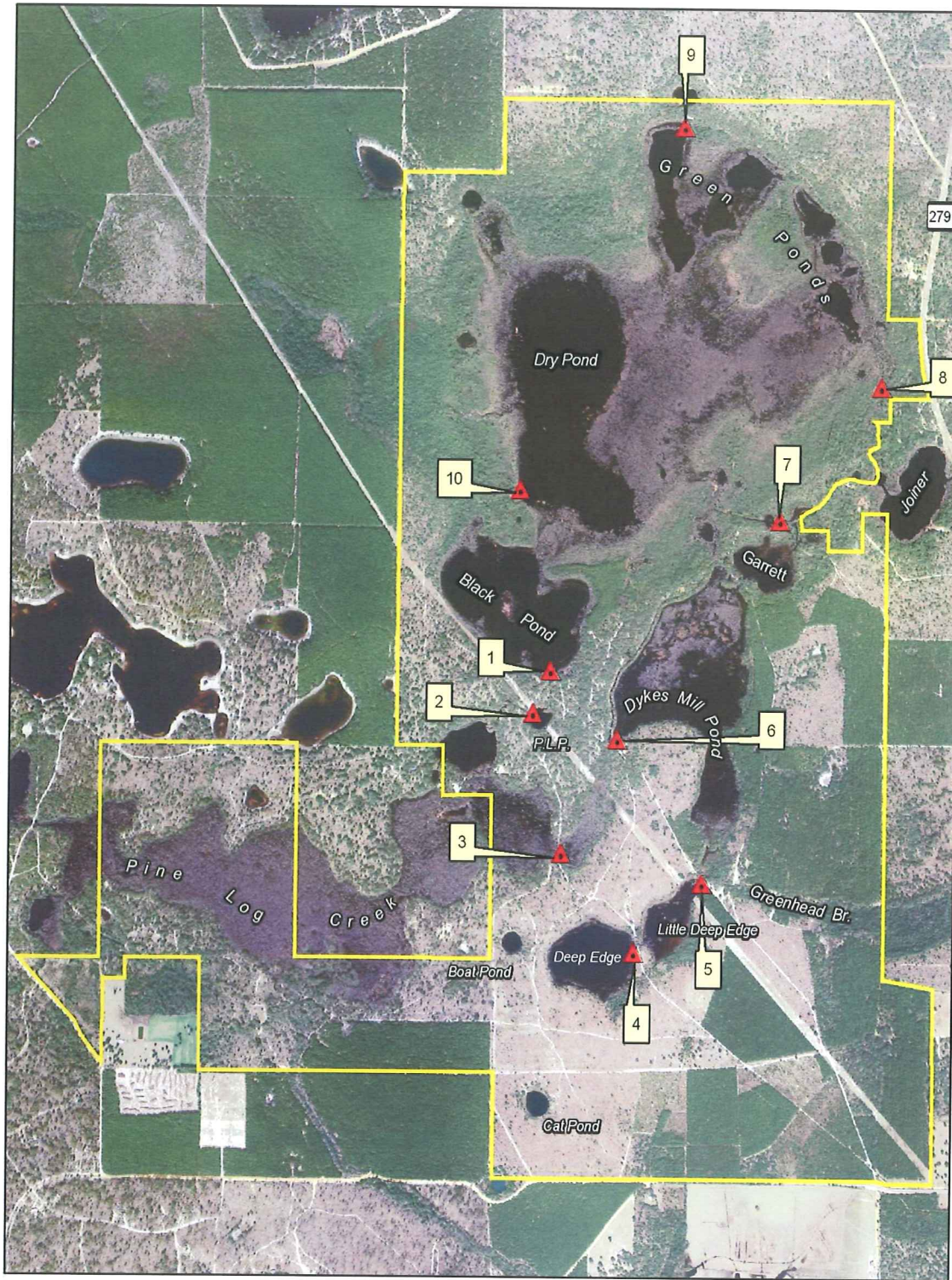


Figure 9 - Water Level Staff Gage Locations



▲ = Staff Gage (Installed 2005)

0 0.5 1 Miles



Figure 11. Winter 2009/2010 Upland and Wetland Wiregrass and Wet Pine Flatwood Species Planting

**Sand Hill Lakes Mitigation Bank
Planting of Grass Plugs
FY 2009 - 2010**

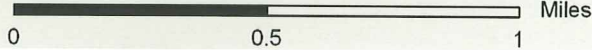
**Wet Prairie Wiregrass
30 Acres / 4840 Plugs per Acre**

**Mixed Wet Prairie Species
6 Acres / 4840 Plugs per Acre**

**Xeric Wiregrass
8 Acres / 4840 Plugs per Acre**

**Xeric Wiregrass
22 Acres / 4840 Plugs per Acre**

(~66 Acres Total)



Wet Flatwood Restoration Sites 6/10/2010



Wet flatwoods restoration 38 acres near Dry Pond, 2nd year



Wet flatwoods restoration, Pine Log and Dry Pond, 3 years



Wet Flatwoods Restoration, Green Ponds, 5.6 acres, 3 years



Wet Flatwoods Restoration 17 acres, the "Island" 3 years



Wet Flatwoods Restoration 6 acres, the “Whale”, near Dry and Black Ponds



Wet flatwoods restoration: wire grass establishment 16.2 acres, 3 yrs

Sand Hill Restoration Sites 6/10/1010



Sand Hill: adjacent to Greenhead Branch, Oak reduction 6/09, burned December 2009



Sand Hill: Adjacent to Little Deep Edge, Oak reduction 06/09, burned December 2009



Sand Hill, near Little Deep Edge, oak reduction 06/08, burned December 2009



Sand Hill, Near Cat Pond, oak reduction 6/09, burned December 2010