



Northwest Florida Water Management District

81 Water Management Drive, Havana, Florida 32333-4712
(U.S. Highway 90, 10 miles west of Tallahassee)

Jonathan P. Steverson
Executive Director

Phone: (850) 539-5999 • Fax: (850) 539-2777

June 13, 2014

Ms. Victoria Tauxe
DEP-OSLER-MS 2500
2600 Blair Stone Rd
Tallahassee, FL 32399-2400



Re: Progress Report 20

Dear Ms. Tauxe,

Please accept this submittal as the 20th progress report for the SHLMB. This report was written in accordance with Specific Condition 27.

Please provide a brief description of permit requirements met and extent of work completed since the previous report:

1. Fishing and hunting continued at the SHLMB throughout the winter and spring without incident in accordance with Specific Condition 8 and Attachment A of the permit.
2. In accordance with Specific Condition 8, security and law enforcement continued at the bank without any violations.
3. Twenty acres of upland wire grass plugs were established in the sand hill restoration on 3' centers in January of 2014 (Figure 1.)
3. Surveys for feral hog damage continued during the spring of 2014 SHLMB in accordance with Specific Condition 22. Hog damage was again observed in 12 acre hydric pine flatwoods restoration site. Hog damage has increased in the 12 acres slash pine plantation restoration site and additional damage was observed surrounding Dry Pond. Two box style traps were purchased to aid FWC in hog control. One hog was captured on 6/2/2014 (Figure 2). The District is considering the use of corral style traps to capture the entire sounder instead of box traps that are less efficient and result in trap avoidance after the first hog captured. David Clayton has been tasked with developing a hog control program for the District and will manage hog contractors.
4. A total of 100 acres of sand pine and hardwoods were eradicated from former sand pine plantation restored to a sand hill community starting on January 15, 2014. Work was completed by January 18th (Figure 3-5).
5. Early spring burns were conducted on 12.5 acres of hydric pine flatwoods between Dry Pond and Black Ponds (Figure 5). A fifty three acre burn was conducted as a training burn adjunct to Pine Log Creek in a sand hill on November 16, 2013 (Figure 6.).

GEORGE ROBERTS
Chair
Panama City

JERRY PATE
Vice Chair
Pensacola

JOHN ALTER
Malone

GUS ANDREWS
DeFuniak Springs

STEPHANIE BLOYD
Panama City Beach

GARY CLARK
Chipley

JON COSTELLO
Tallahassee

NICK PATRONIS
Panama City Beach

BO SPRING
Port Saint Joe

6. A thirty seven acre sand hill restoration adjacent to the check station was treated for hardwood and Bahia grass cover in March of 2014 (Figures 7-9). The eradication was excellent for the hardwoods, but the treatment used was not effective for the Bahia grass. The contractor will re-treat the area in the next month.

Restoration activities anticipated within the next 6 months:

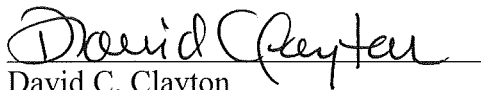
1. Surveys for nuisance and exotic species will continue in fall of 2014 in accordance with specific condition 22.
2. Water Level gauges will continue to be measured in 2014 in accordance with Specific Condition 12.
3. Approximately 300 acres of sand hill will be burned during the summer/fall of 2014.
4. The annual monitoring will be conducted in accordance with Specific Condition 28.

Please provide a brief description of problems encountered and solutions undertaken:

Hog damage observed, were taken to eradicate hogs. Bahia grass and hardwood cover on a 37 acre sand hill restoration adjacent to the check station was treated with herbicide. Poor Bahia grass eradication was observed. The contractor will retreat the area by late June 2014.

Certification

I certify that this report represents true accurate and representative description of the activities and site conditions at the time of this report. This semi-annual report was written in accordance with Specific Condition 27, of the permit.



David C. Clayton

Environmental Scientist

Qualified Mitigation Supervisor

Enclosures:

- Figure 1. Upland Wiregrass Planting in Sand hill restoration (20 acres)
- Figure 2. Feral hog trapped June 2' 2014 – Near 12 acre Hydric Slash Pine Restoration
- Figure 3. Sand hill restoration: sand pine and hardwood eradication in former sand pine plantation
- Figure 4. Sand Hill Restoration, eradication of hardwoods and sand pine
- Figure 5. Sand Hill Restoration, eradication of hardwoods and sand pine
- Figure 6. Hydric Pine Flatwoods Restoration Burn: 12.5 acres
- Figure 7. A fifty three acre burn adjacent to Pine Log Creek within the sand hills conducted on 11/16/13
- Figure 8. Hardwoods and Bahia grass treatments occurred on a 37 acre sand hill restoration
- Figure 9. Yaupon eradication on 37 acre sand hill restoration
- Figure 10. Bahia grass eradication on 37 acres sand hill restoration
- Figure 11-15. Representative Site Photos



Figure 1. Upland Wiregrass Planting in Sand hill restoration (20 acres)



Figure 2. Feral hog trapped June 2nd 2014 – Near 12 acre Hydric Slash Pine Restoration

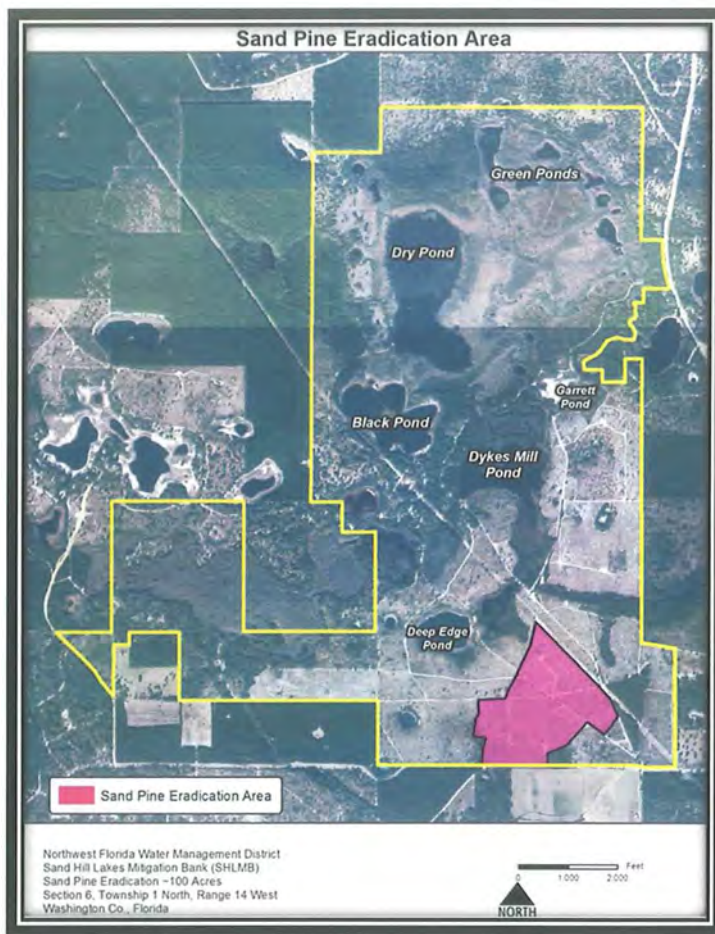


Figure 3. Sand hill restoration: sand pine and hardwood eradication in former sand pine plantation



Figure 4. 6/3/14. Facing West: Unit 11- Sand Hill Restoration, eradication of hardwoods and sand pines



Figure 5. 6/3/14. Facing West: Unit 11- Sand Hill Restoration, eradication of hardwoods and sand pine



Figure 6. Hydric Pine Flatwoods Restoration Burn: March 24, 2014
Between Dry Pond and Black Pond (12.5 acres)

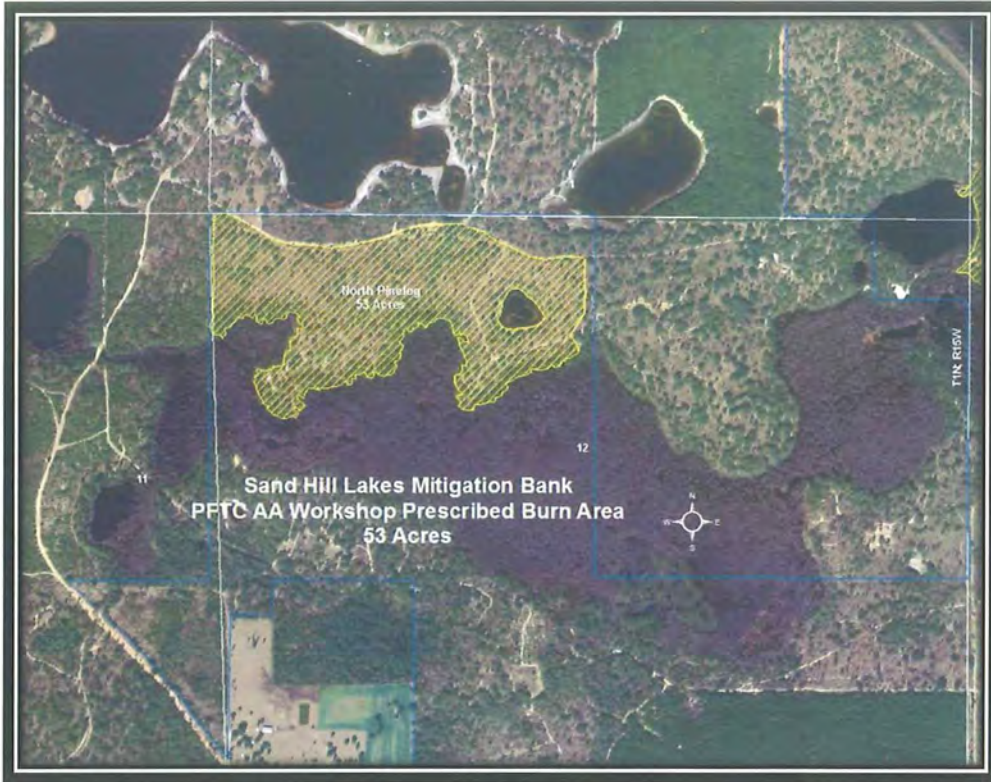


Figure 7. A fifty three acre burn adjacent to Pine Log Creek within the Sand Hills Conducted on 11/16/13



Figure 8. Hardwoods and Bahia grass treatments occurred on a 37 acre sand hill restoration site located on a former slash pine plantation



Figure 9. 6/3/14. Facing south. Yaupon eradication on 37 acre sand hill restoration from former slash pine plantation adjacent to the check station (Management Unit 11).



Figure 10. 6/3/14. Facing east. Bahia grass eradication on 37 acres sand hill restoration from former slash pine plantation adjacent to check station. Contractor to retreat by June 30, 2014.



Figure 11. 6/3/14. Facing Northwest. Sand hill adjacent to Pinelog Creek. Management Unit 10.



Figure 12. 6/3/14. Facing Southwest. Cypress at Black Pond. Management Unit 1.



Figure 13. 6/3/14 Facing Southwest. Hydric Pine Flatwoods Restoration (12.5 acre polygon) near Black and Dry Ponds. Management Unit 2.



Figure 14. 6/3/14. Facing East. Hydric pine flatwoods restoration. (48.6 acre polygon) Management Unit 2.



Figure 15. 6/3/14. Facing Northeast. Hydric pine flatwoods restoration, former slash pine plantation, 12.5 acres) Management Unit 3.



Figure 16. 6/3/14. Sand hill restoration from former sand pine plantation. Eight four acres adjacent to Dykes Mill Pond, Management Unit 11.