



Douglas E. Barr
Executive Director

Northwest Florida Water Management District

81 Water Management Drive, Havana, Florida 32333-4712
(U.S. Highway 90, 10 miles west of Tallahassee)

(850) 539-5999 • (Fax) 539-2777

RECEIVED

MAY 31 2007

OFFICE OF SUBMERGED LANDS
AND ENVIRONMENTAL RESOURCES

May 31, 2007

Ms. Victoria Tauxe
DEP-OSLER-MS 2500
2600 Blair Stone Rd
Tallahassee, FL 32399-2400

Re: Progress Report 4

Dear Ms. Tauxe,

Please accept this submittal as the fourth semi-annual progress report for the SHLMB.

Please provide a brief description of permit requirements met and extent of work completed the previous report or since the permit was issued:

1. The SHLMB opened for limited opportunity fishing on 5/18/2007. Fishing has been allowed only on selected lakes due to the low water levels. These include Dry Pond, Black Lake and Deep Edge Pond. There were a total of 40 anglers over the first four days (12 Friday, 6 Saturday, 9 Sunday and 13 Monday). Anglers caught a total of 65 bass and 143 bluegill with 100 bluegill taken. Boats are expected to arrive within the next two weeks; however no boats will be placed on Deep Edge pond to reduce potential impacts.
2. A Gyro-track has been used in the wet flatwoods area to reduce the shrub layer (Figure 1). Shrub reduction was initiated in February of 2007 and is expected to be completed by August of 2007. To date approximately 82.5 acres have had shrubs removed. An additional 58 acres will be gyro-tracked by August of 2007.
3. Construction on three bridges and two culverts was completed in early April of 2007 (Figure 10, Typical Bridge Design Sheet 2 of 7, and Typical Culvert Installation Sheet 4 of 7). All construction was completed in compliance with permit drawings. Permit and as-built drawings have been included for your review (Appendix 1). Photos included in Appendix 2.
4. The remediation of erosion areas #6 occurred as part of erosion control in summer of 2006 (Figure 9). Remediation of three road-fill crossings and remaining 9 erosion areas was initiated January, 2007 and completed in March of 2007 (Figure 9 and 10 and Typical Road Cut Sheet 3 of 7). Silt fences and turbidity barriers were installed and maintained. Following earth moving annual rye grass was planted. Erosion areas were planted within 30 days in accordance with the planting plan (Attachment D). Wire grass was planted on 3' centers.

GEORGE ROBERTS
Chair
Panama City

PHILIP K. McMILLAN
Vice Chair
Blountstown

SHARON PINKERTON
Secretary/Treasurer
Pensacola

PETER ANTONACCI
Tallahassee

STEPHANIE BLOYD
Panama City Beach

SHARON T. GASKIN
Wewahitchka

STEVE GHAZVINI
Tallahassee

TIM NORRIS
Santa Rosa Beach

JERRY PATE
Pensacola

Cypress trees were planted in the wetlands while long leaf pines were planted in the uplands at a rate of 300 trees per acre. However, due to the drought, most of the planted material has since died.

5. Surveys for feral hogs and beavers continued through the winter and spring at the SHLMB. No hog or beaver damage has been observed. However a small feral hog was observed in April of 2007 near Black Pond.
6. During the winter and spring site inspections no nuisance species have been observed. Areas where torpedo grass has been previously observed were evaluated. These areas have been bone dry for over 6 months and no viable torpedo grass has been observed.
7. In accordance with Specific Condition 8, security and law enforcement continued at the bank throughout the winter and spring. No violations were observed on the bank.
8. Several winter burns were attempted in 2007. However, due to the drought, low humidity and higher winds than anticipated. Several of the planned burns were postponed due to the danger of wildfire. Completed, attempted or postponed winter burns are shown in Figure 11.
9. Monthly site inspections were conducted for the SHLMB from December through April (Appendix 3).

Restoration activities anticipated within the next 6 months:

1. Oak trees will be thinned in approximately 6 acres surrounding Cat Pond and 18 acres adjacent to Little Deep Edge (Figure 12). These two areas contain high quality sand hill community that has been degraded by dense oak stands. Thinning of oaks within these areas should improve the quality of the sand hill habitat.
2. Continued surveys for feral hogs will continue during the summer at the SHLMB.
3. Anticipated summer burns have been suspended due to the prolonged drought and extreme potential for wildfire. If conditions change the summer burn plan will be re-implemented.
4. The harvesting of sand pine stands and thinning of planted slash pines should begin in June of 2007.
5. Design of the dam at Black Pond has been nearly completed. Construction of the dam should occur in July or August.
6. Gyro-tracking in the wet pine flatwoods will continue over the next several months.
7. Materials for the boat ramp at Dry Pond have been ordered and the boat ramp should be installed by August of 2007.

Please provide copies of the permit drawings indicating areas where work has been completed:

Copies of permit drawings and associated maps are included: Figure 9 and 10, Typical Bridge Design Sheet 2 of 7, Typical Road Cut Sheet 3 of 7, Typical Culvert Installation Sheet 4 of 7 and Appendix 1.

Please provide a brief description of problems encountered and solutions undertaken:

-An intense winter burn occurred adjacent to Greenhead Branch in Management Unit 12. Nearly all of the planted long leaf pine seedlings were destroyed. The site will be evaluated this fall for survivorship of long leaf pine. The area will be re-planted during the winter of 2007 if few to no long leaf pine trees survived.

-Scattered Bahia grass seedlings have been observed within the erosion stabilization areas #1, #2, #3 and #10. Orange Hill Soil and Water Conservation District inadvertently applied mulch contaminated with Bahia grass seed to the sites listed above. Orange Hill has agreed to herbicide all Bahia grass within these areas using hand sprayers and appropriate chemicals as well as re-plant any damaged plant material.

-Due to the drought, the majority of the planted material in the erosion areas, bridge embankments and road fill removal areas has died. These areas will be re-planted next year in accordance with the planting plan. However, in order to prevent erosion when the summer rains finally begin, the areas will be seeded native grasses or a mixture of native upland meadow species.

Thank you for your consideration of this submittal. If you have any question or comments please feel free to contact me at 850-539-5999.

Sincerely,

David Clayton
QMS

Enclosures:

Figure 1 – Brush Reduction Polygons (Gyro-Track)
Figure 9 – Erosion Stabilization Sites (From Permit)
Figure 10 – Structures (From Permit)
Figure 11 – Winter Burns at the SHLMB
Figure 12 – 2007 Oak Reduction: Adjacent to Little Deep Edge and Cat Pond
Typical Bridge Design (From Permit)
Typical Road Cut (From Permit)
Typical Culvert Installation (From Permit)

Appendix 1: As-built drawings for Bridge and Culvert Construction
Appendix 2: Photos of Bridge and Culvert Construction
Appendix 3: Copies of Monthly Site Inspection

Figure 1. Brush Reduction Polygons

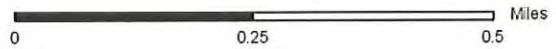
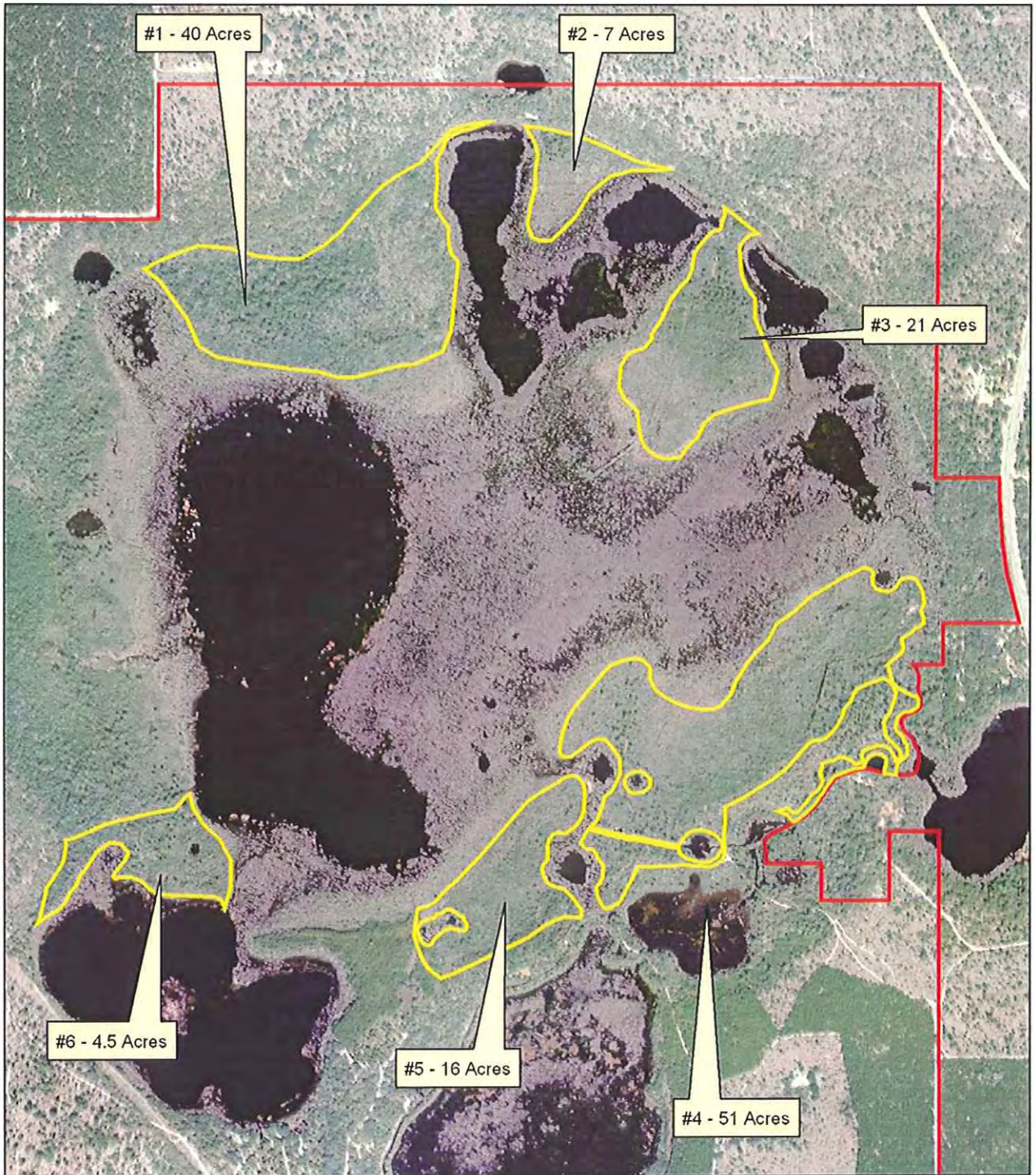


Figure 9 - Erosion Stabilization Sites

Site	Acres	Sq. Ft.
1	0.0272	1,200
2	0.0371	1,600
3	0.1063	4,600
4	0.1927	8,400
5	0.2002	8,700
6	0.0321	1,400
7	0.2471	10,800
8	0.0741	3,200
9	0.0173	800
10	0.1161	5,000

		1.0502

Stabilization methods may include vehicle exclusion, revegetation, low berms and railroad ties.

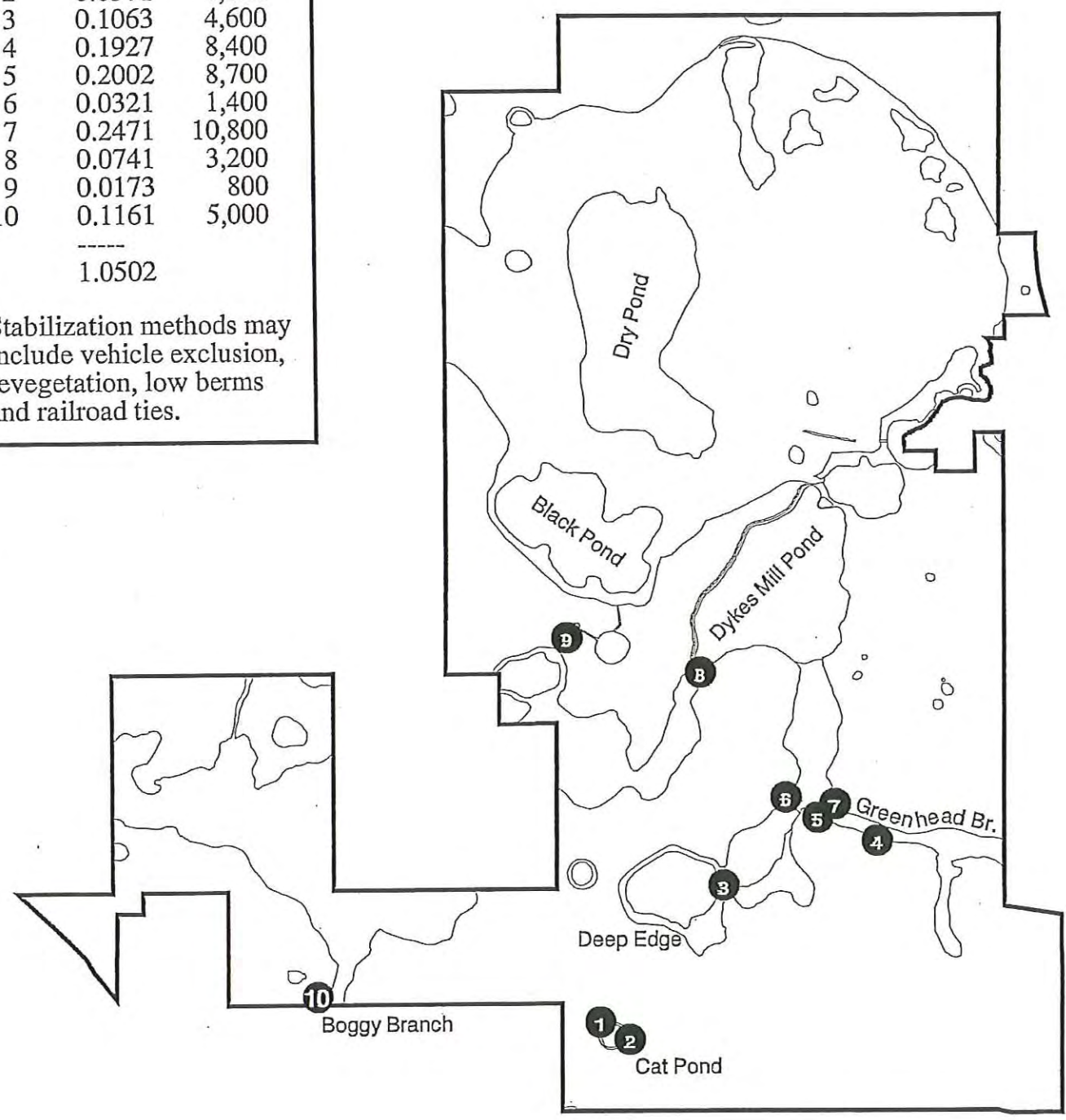


Figure 10 - Structures

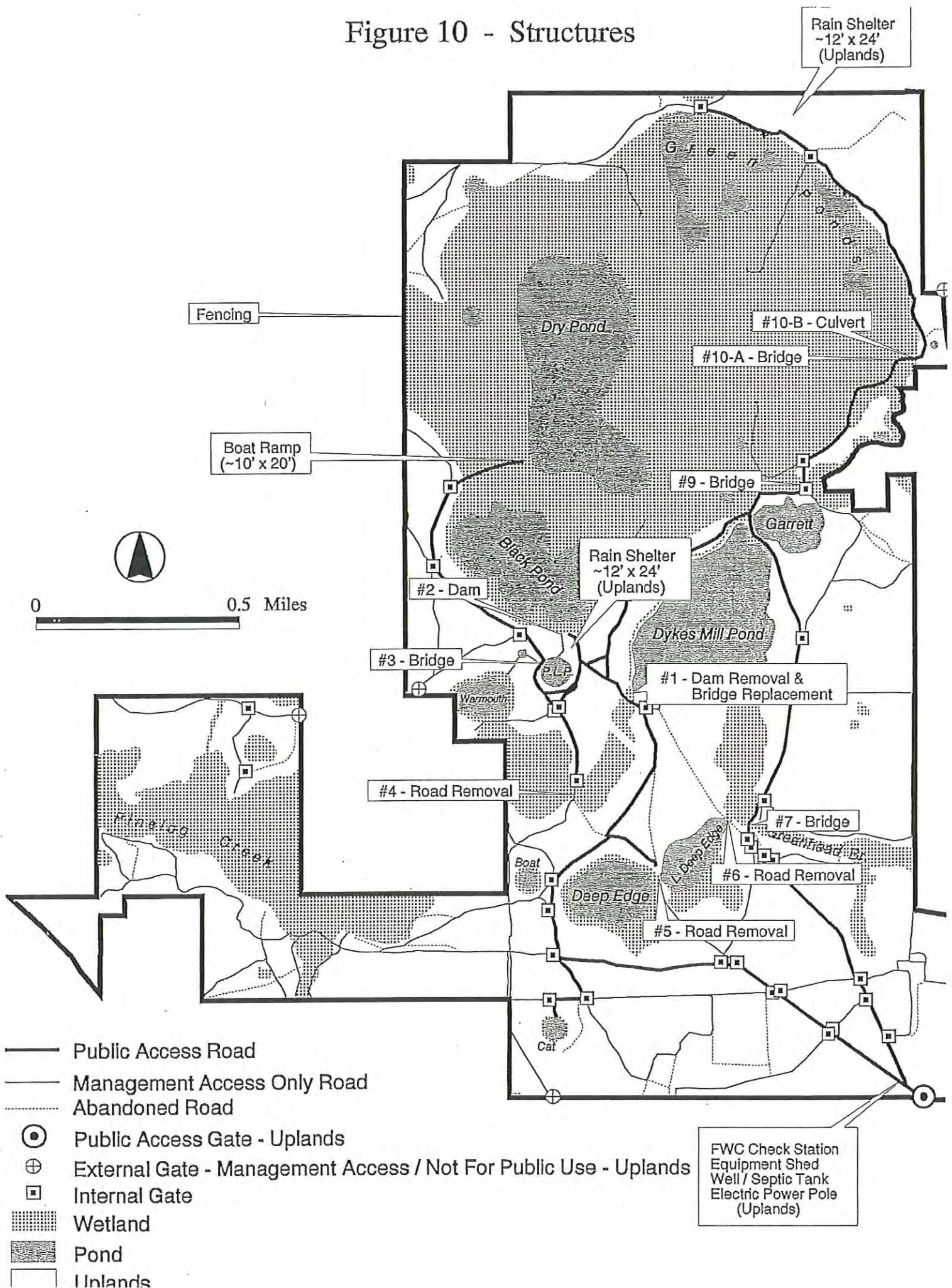


Figure 11. Winter burns at the SHLMB

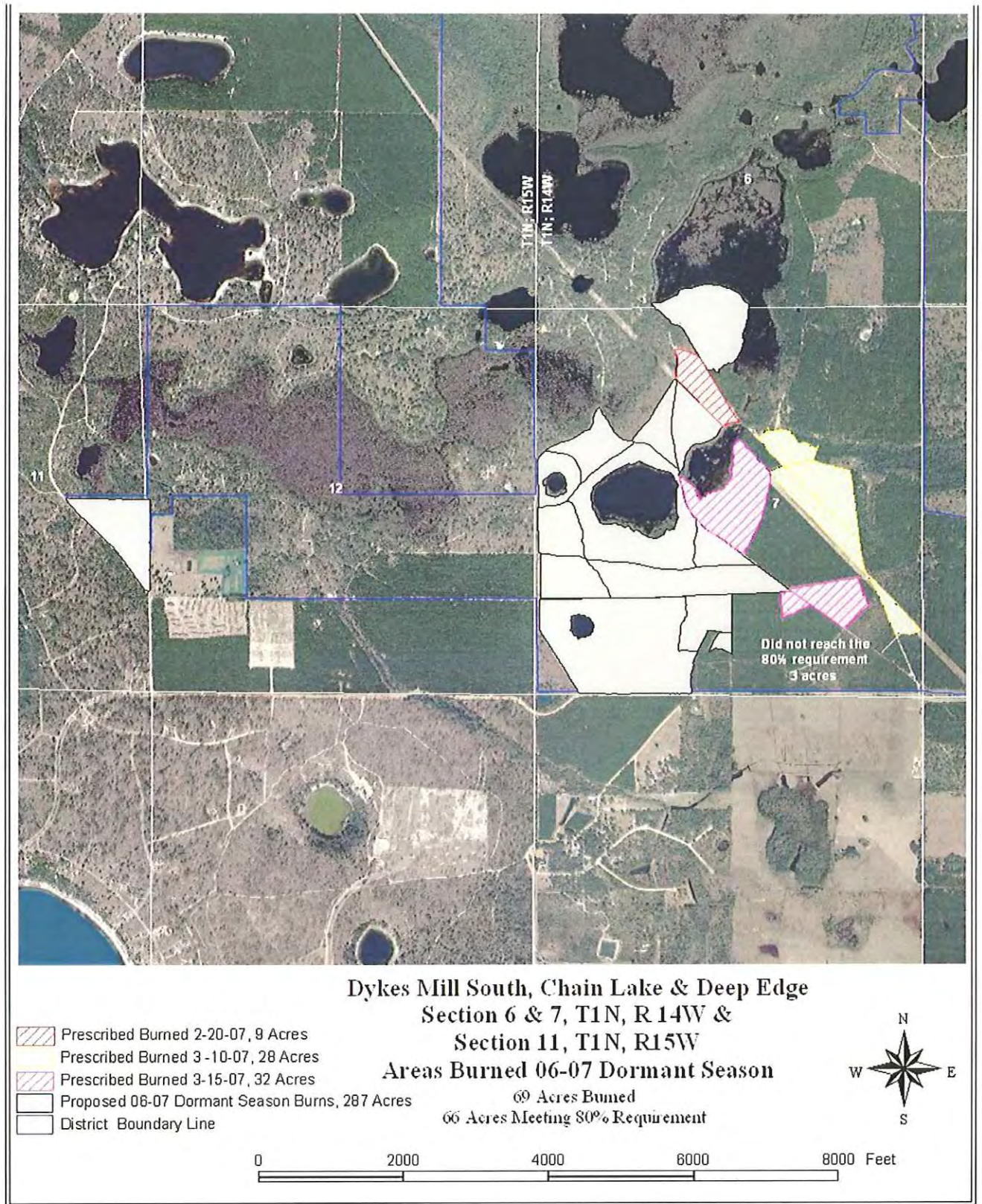
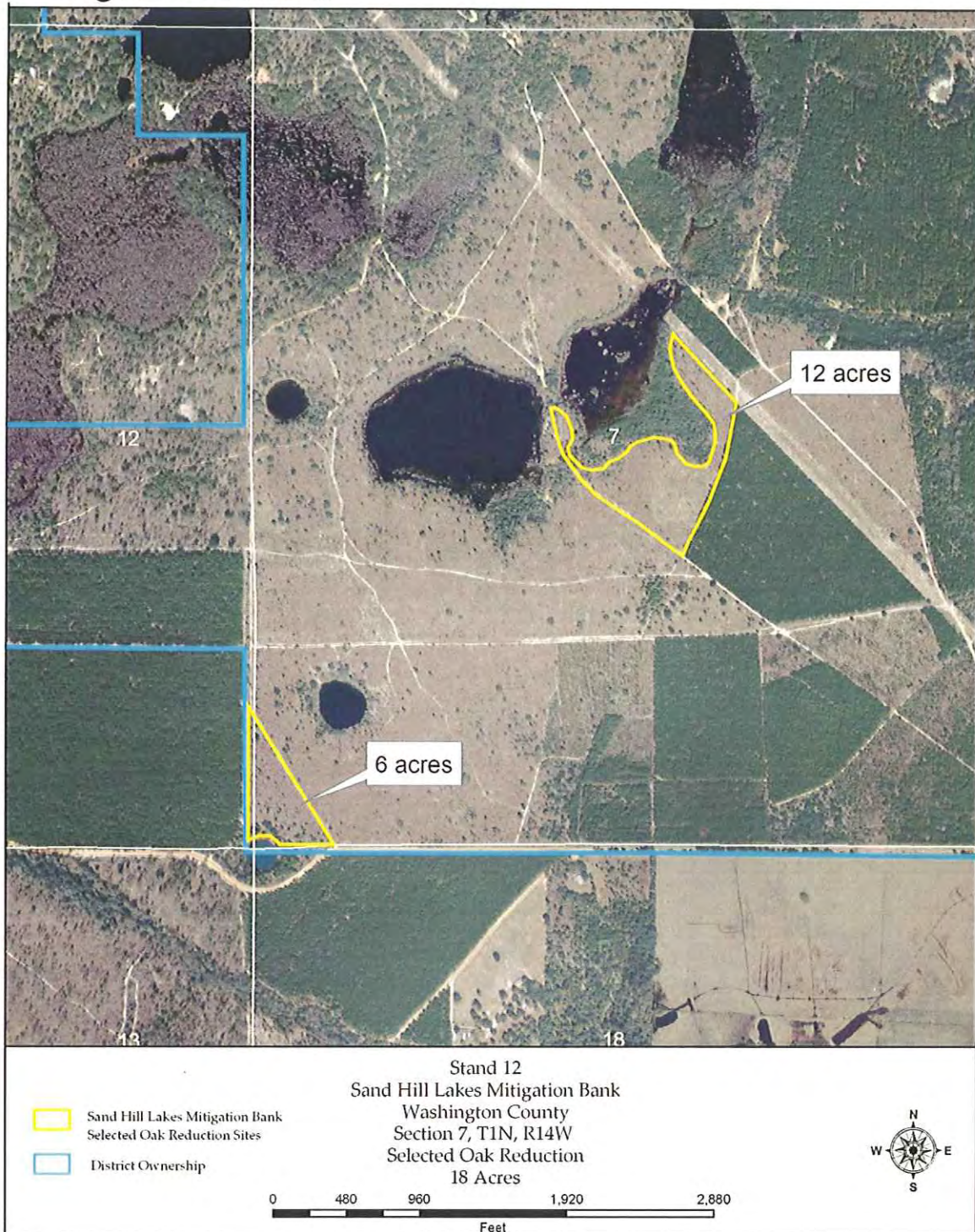
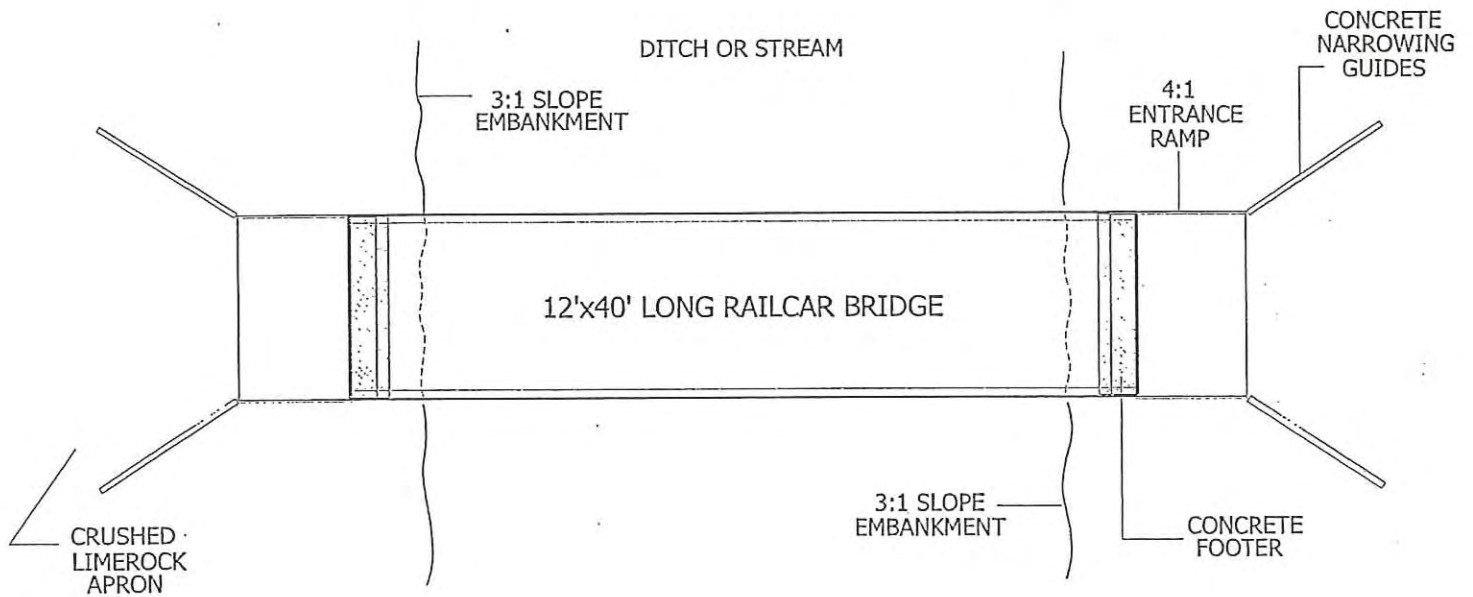


Figure 12. 2007 Oak Reduction: Adjacent to Little Deep Edge and Cat Pond

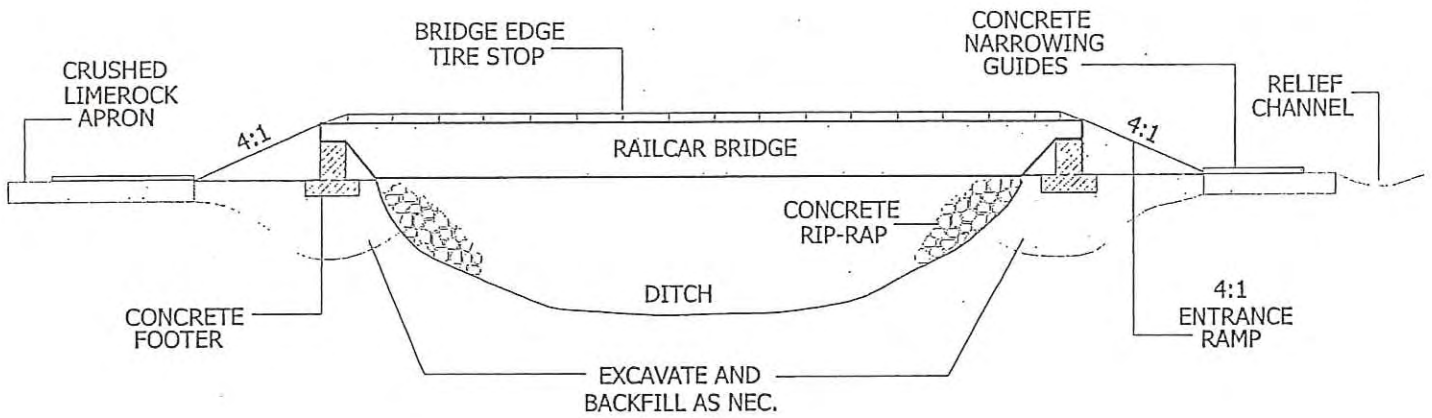


TYPICAL BRIDGE DESIGN

NOT TO SCALE



PLAN VIEW

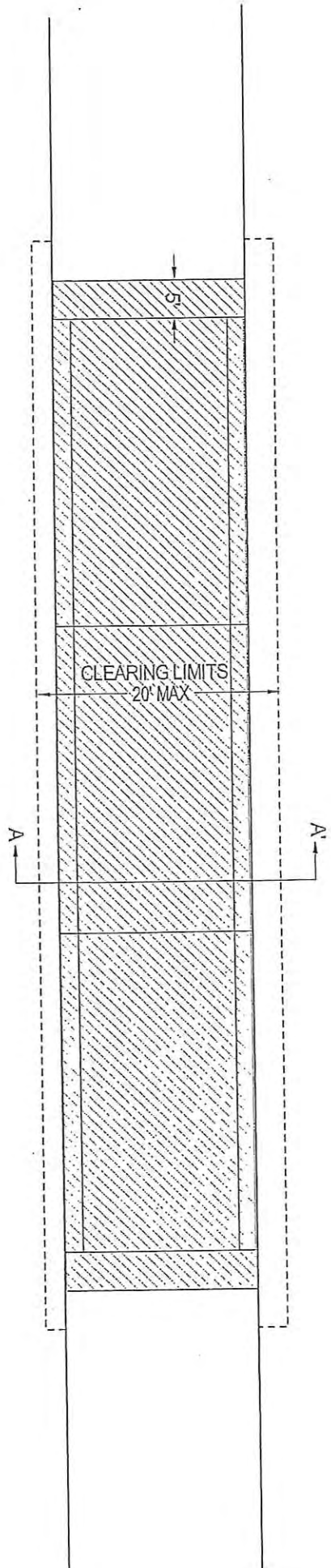
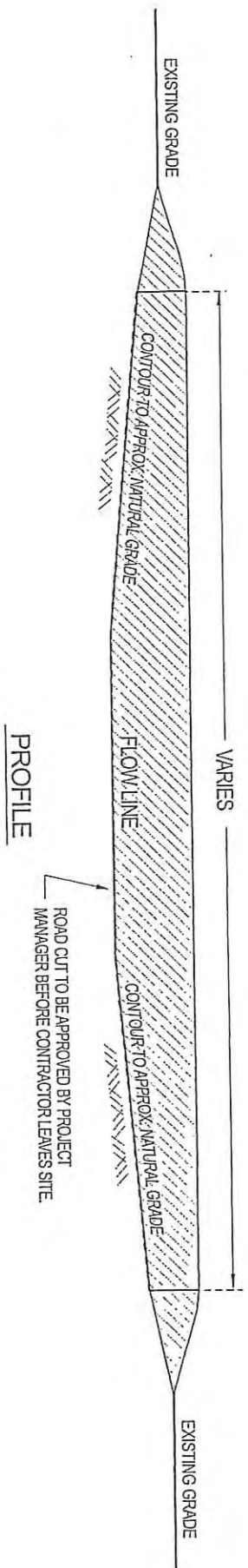


PROFILE VIEW

Grady Lee Mc Tranter
9/22/05

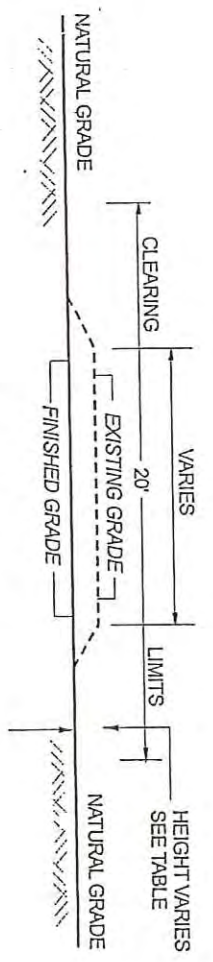
TYPICAL ROAD CUT

(NOT TO SCALE)



NOTES:

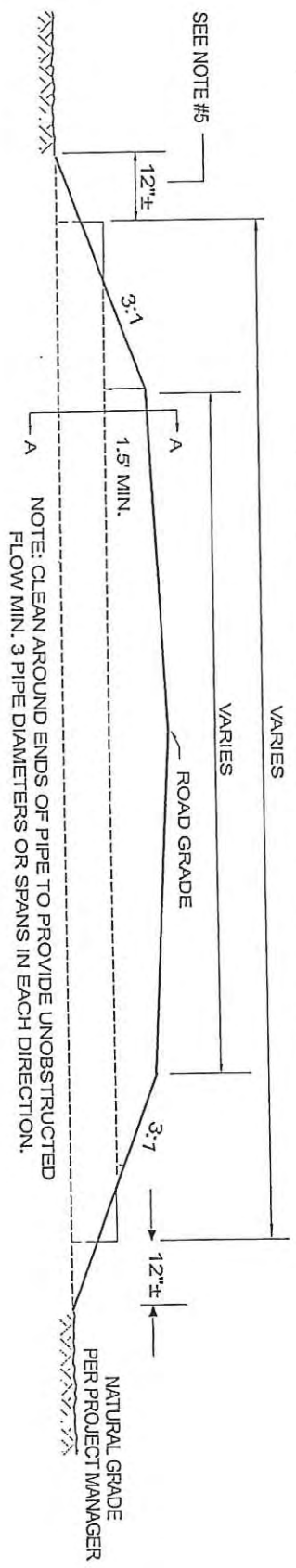
1. REMOVED MATERIAL TO BE PLACED IN ERODING UPLANDS OR OTHER APPROPRIATE UPLAND DISPOSAL SITE.
2. ALL MATERIALS TO BE PROVIDED FROM SITE.
3. VEGETATION ALONG SIDES OF ROAD TO BE REMOVED BY CONTRACTOR WHERE NECESSARY. REPLANT FORMER ROAD FOOT PRINT TO MATCH SURROUNDING COMMUNITY.



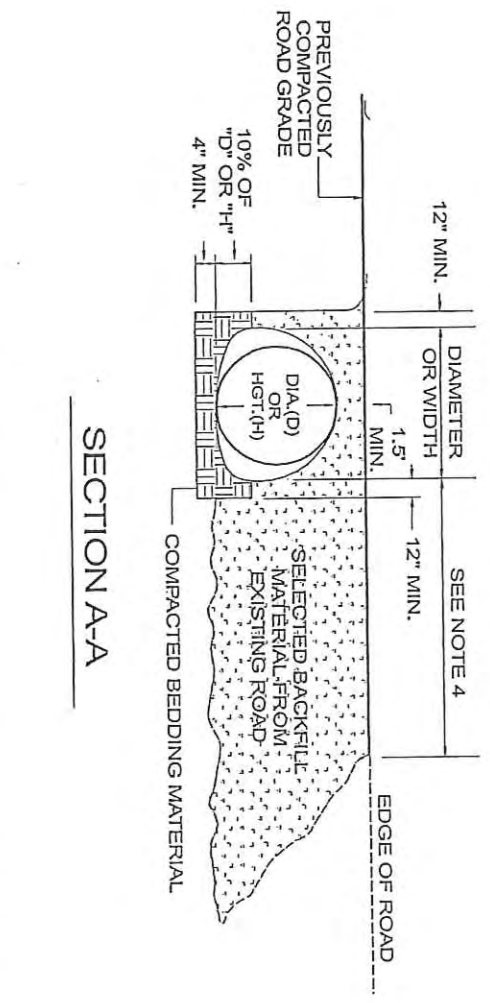
SECTION A-A'

Bradford Star Architecture

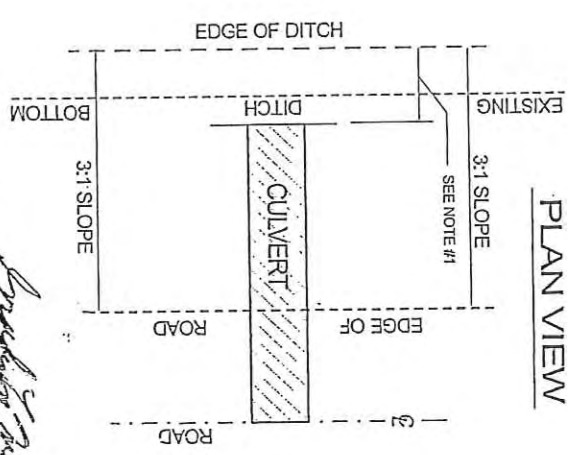
CULVERT INSTALLATION



PROFILE



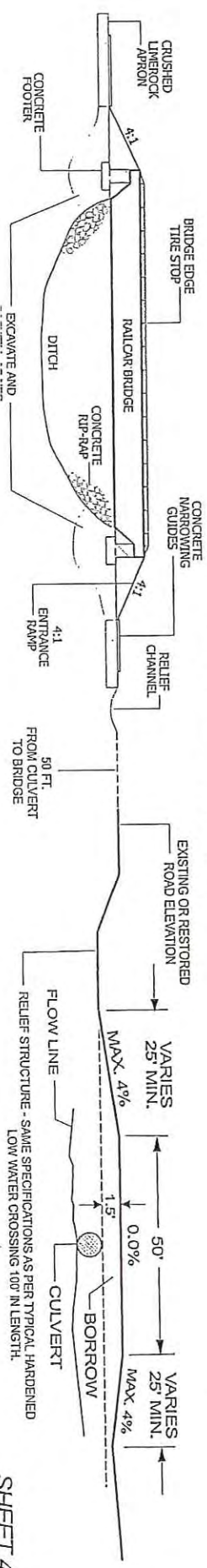
SECTION A-A



PLAN VIEW

RAILCAR BRIDGE (10A) AND CULVERT (10B) INSTALLATION

ROAD PROFILE AT BRIDGE & CULVERT LOCATION



Byronne Stan Marchion
8/22/05

Appendix 2: Photos of Bridge and Culvert Construction

Culvert Construction at Powerline Pond (Pond Near Dry) March 2007



Culvert Construction at Powerline Pond (March 2007)



Completed Bridge at Pine Log Creek (April 2007)



Completed Culvert at Old Pine Log Creek Crossing (April 2007)



Culvert at Old Pine Log Creek (April 2007)



Boggy Branch Erosion Restoration Site #10 (February 2007)



Cat Pond Erosion Restoration Sites #1 and #2 (February 2007)



Erosion Control Site #4 at Greenhead Branch March 2007



Erosion Control Site #7 at Greenhead Branch March 2007



Roadfill Removal Between Little Deep Edge and Greenhead Branch (March 2007)



Road Removal Between Little Deep Edge and Greenhead Branch March 2007



Road Removal Between Little Deep Edge and Greenhead Branch from Uplands



Road Removal Between Deep Edge and Little Deep Edge (February 2007)



Road Removal Between Deep Edge and little Deep Edge (February 2007)



Bridge Construction at Greenhead Branch (February 2007)



Bridge Construction at Greenhead Branch (February 2007)



Winter Burn in Management Unit 12 Adjacent to Greenhead Branch March 2007



Winter Burn in Management Unit 12 Adjacent to Greenhead Branch March 2007



Appendix 3: Copies of Monthly Site Inspection

Site Inspection Field Form**Page 1 of 1**

Name(s) of Data Collectors: David Clayton

Date: 1/23/07 Time: 9:30 am

On a monthly basis, the site will be inspected as follows:

Perimeter checked for signs of trespassing, fencing and signage integrity and infestation by exotic or nuisance vegetation;

Comments: None

Internal Roads (Both public and maintenance) checked for signs of dumping or trespassing, erosion, bridges and road integrity, and exotic or nuisance species infestations;

Comments: No dumping, erosion or trespass.

All construction areas checked for stabilization and re-vegetation, structure, operation, and integrity;

Comments: Stabilization of Greenhead branch bridge, placement of rye grass, and mulch...same for Dykes Mill Pond. Area around Dykes Mill Pond needs to be cleaned up. Talked to Tyler and site manager about this...follow up...the area was cleaned up. Silt fences in one area compromised around Dykes Mill pond...discussed with project manager...follow up...silt fences back in place...also at Pine Log Creek...silt fences down...no turbid water noted...area was dry...talked to site manager about repairing and replacing silt fences...follow up visit, areas were corrected. Bridge and culverts expected to be completed by middle of March.

Culvert removed from Greenhead branch.

Met with Don Walters and contractor that will be doing the erosion sites...and spelled out permit requirements including silt fences and turbidity barriers. Checked sites prior to work initiation. All silt fences properly installed and turbidity barriers in place. Areas will be stabilized soon after work complete...planting of long leaf pine and wire grass expected to occur on 2/23/07.

Powerline checked for trespassing or disturbance that may affect the integrity of the bank;

Comments: None

At least 3 polygons of each UMAM community evaluated or for those UMAM communities with less than three polygons, each UMAM polygon evaluated.

Comments:
See above.

Wildlife Observations: Chirping Sparrows, 8 Quail, Robin, 5 deer, Red-shouldered Hawk, Titmouse, coyote and dog tracks, Rufus Sided Towhee. Yellow jasmine, blue berry, innocence, wild olive and black ti ti in bloom.

Site Inspection Field Form

Name(s) of Data Collectors: David Clayton

Date: 2/20/07 Time: 9:30 am

On a monthly basis, the site will be inspected as follows:

Perimeter checked for signs of trespassing, fencing and signage integrity and infestation by exotic or nuisance vegetation;

Comments: None

Internal Roads (Both public and maintenance) checked for signs of dumping or trespassing, erosion, bridges and road integrity, and exotic or nuisance species infestations;

Comments: No dumping, erosion or trespass.

All construction areas checked for stabilization and re-vegetation, structure, operation, and integrity;

Comments: Construction completed for Dykes Mill Pond, Green Head Branch Bridges, culverts almost completed for old Pine log creek, alternative flowpath for Pine log creek, and powerline pond. Most areas have been stabilized with rye grass and non invasive mulch. The erosion sites for Boggy Branch, Cat Pond and road removal for Deep Edge/Little Deep Edge have been completed and planted with wire grass and pine trees....wetlands were planted with cypress.

Powerline checked for trespassing or disturbance that may affect the integrity of the bank;

Comments: None

At least 3 polygons of each UMAM community evaluated or for those UMAM communities with less than three polygons, each UMAM polygon evaluated.

Comments:

Construction continues on the installation of the bridges and culverts. The silt fences were inspected. Assisted in a fuel reduction burn surrounding Deep Edge and Little Deep Edge...this area had the oaks thinned and this area was burned to reduce the cover of the downed trees. This was a good fuel reduction fire and the first of several planned for this area this spring. Took lots of photographs.

Wildlife Observations: Blue jay, tufted titmouse, crow, deer tracks, coyote scat, raccoon tracks.

Site Inspection Field Form

Name(s) of Data Collectors: David Clayton

Date: 3/15/07 Time: 10:30 am

On a monthly basis, the site will be inspected as follows:

Perimeter checked for signs of trespassing, fencing and signage integrity and infestation by exotic or nuisance vegetation;

Comments: None

Internal Roads (Both public and maintenance) checked for signs of dumping or trespassing, erosion, bridges and road integrity, and exotic or nuisance species infestations;

Comments: No dumping, erosion or trespass.

All construction areas checked for stabilization and re-vegetation, structure, operation, and integrity;

Comments: Construction completed for Dykes Mill Pond, Green Head Branch Bridges, culverts almost completed for old Pine log creek, alternative flowpath for Pine log creek, and powerline pond. Most areas have been stabilized with rye grass and non invasive mulch. The erosion sites for Boggy Branch, Cat Pond and road removal for Deep Edge/Little Deep Edge have been completed and planted with wire grass and pine trees....wetlands were planted with cypress. Bahia grass seed, stems and leaves were observed at Boggy Branch, Deep Edge Road Removal and the two erosion areas at Cat Pond. Mulch contaminated with Bahia grass seed was placed in these areas. The contractor, Orange Hill Soil and Conservation District was informed and agreed to herbicide any Bahia grass plants that were found within the restored areas for as long as it takes to control the Bahia grass. Any wire grass or cypress trees damaged by the herbicide will be re-planted.

Powerline checked for trespassing or disturbance that may affect the integrity of the bank;

Comments: None

At least 3 polygons of each UMAM community evaluated or for those UMAM communities with less than three polygons, each UMAM polygon evaluated.

Comments:

Construction continues on the installation of the bridges and culverts. The silt fences were inspected.

Wildlife Observations: Blue jay, tufted titmouse, possum tracks, rabbit tracks.

Site Inspection Field Form

Name(s) of Data Collectors: David Clayton

Date: 4/9/07 Time: 10:00 am

On a monthly basis, the site will be inspected as follows:

Perimeter checked for signs of trespassing, fencing and signage integrity and infestation by exotic or nuisance vegetation;

Comments: None

Internal Roads (Both public and maintenance) checked for signs of dumping or trespassing, erosion, bridges and road integrity, and exotic or nuisance species infestations;

Comments: No dumping, erosion or trespass.

All construction areas checked for stabilization and re-vegetation, structure, operation, and integrity;

Comments: Construction completed for Dykes Mill Pond, Green Head Branch Bridges, culverts almost completed for old Pine log creek, alternative flowpath for Pine log creek, and powerline pond. Guard rails and signs have been installed. Rye grass dying due to drought. Alternative seed source needed when rains finally start. Gyro-track work well underway.

Powerline checked for trespassing or disturbance that may affect the integrity of the bank;

Comments: None

At least 3 polygons of each UMAM community evaluated or for those UMAM communities with less than three polygons, each UMAM polygon evaluated.

Comments: Spent 5 days flagging for Gyro-track. Need to GPS completed polygons. Removal of all shrubs within the polygons required. It is amazing how different these areas look. Will burn areas this fall.

Wildlife Observations: Blue jay, black racer, sliders, alligator, deer

Site Inspection Field Form

Name(s) of Data Collectors: David Clayton

Date: 5/07/07 Time: 11:00 am

On a monthly basis, the site will be inspected as follows:

Perimeter checked for signs of trespassing, fencing and signage integrity and infestation by exotic or nuisance vegetation;

Comments: None

Internal Roads (Both public and maintenance) checked for signs of dumping or trespassing, erosion, bridges and road integrity, and exotic or nuisance species infestations;

Comments: No dumping, erosion or trespass.

All construction areas checked for stabilization and re-vegetation, structure, operation, and integrity;

Comments: Gyro-track work nearly completed for wet pine flatwood adjacent to Dry Pond...51 acres, an additional area behind the planted pine, and about half of the peninsula. Additional areas need flagging in the near future adjacent to the green ponds. This wet flatwood area was supposed to be burned last winter but heavy fuel loads prevented burning. Hopefully gyro-tracking will reduce cover sufficiently to prevent the fire from getting out of control.

Powerline checked for trespassing or disturbance that may affect the integrity of the bank;

Comments: None

At least 3 polygons of each UMAM community evaluated or for those UMAM communities with less than three polygons, each UMAM polygon evaluated.

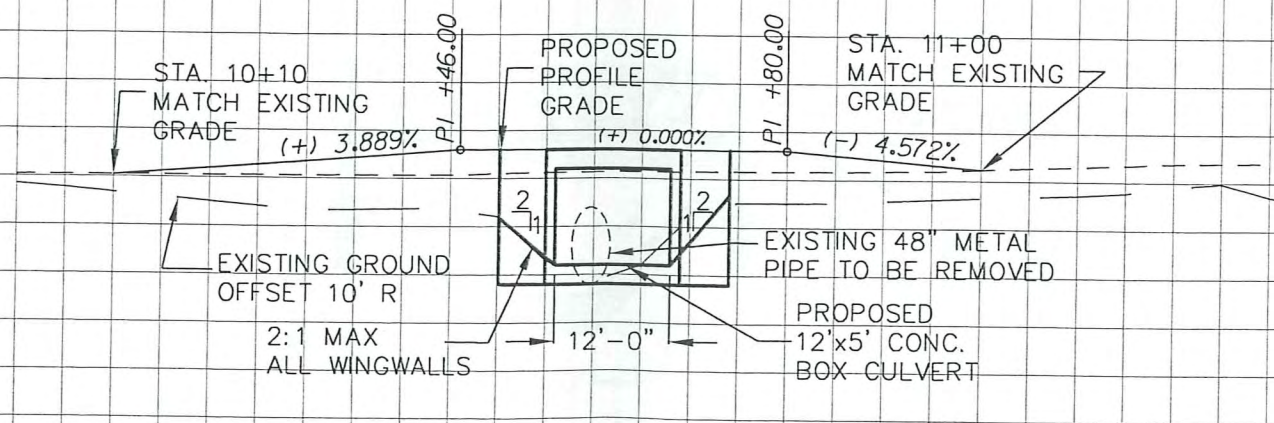
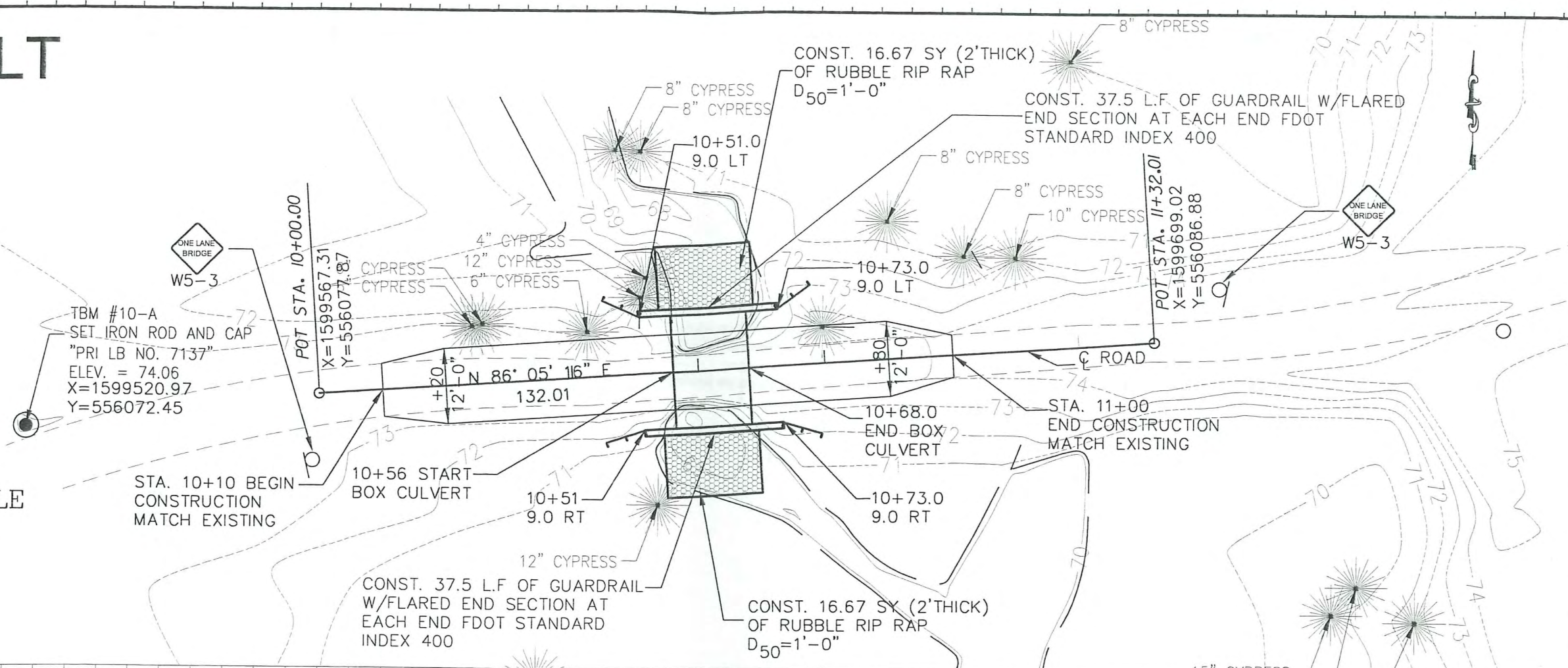
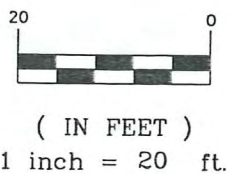
Comments: Spent 3 additional days flagging for Gyro-track. The Bank is extremely dry. Powerline pond completely dry as well as Garret Pond. Some green ponds also completely dry. Nearly all of Little Deep Edge pond is dry. The rookery this year has been abandoned probably due to the lack of water surrounding the shrub islands. This is the driest I have ever seen the ponds at the bank.

Wildlife Observations: Deer tracks, coyote tracks

Appendix 1: As-build drawings for Bridge and Culvert Construction

AS-BUILT

GRAPHIC SCALE



DATE	REVISION	SYMBOL	REVISION	SYMBOL	DATE	SYMBOL	REVISION	SYMBOL	DATE
ISSUE DATE: 9MAY07 COMP. FILE NO.: STATE PROJECT NO.:									
DESIGNER: J. SLIGER	ISSUE DATE: 9MAY07	REGISTERED ENGINEER 1427 N. Brough Street Phone: 850-894-1421, Fax: 850-224-0505 Certificate of Authorization No. 9292							
DRAWN BY: C. CAMPOS	REVIEWED BY: J. REGISTE	NORTHWEST FLORIDA WATER MANAGEMENT DISTRICT JOINER LAKE/GREEN PONDS CHANNEL SAND HILL LAKES MITIGATION BANK							
CONSULTANT: REGISTE, SLIGER & ASSOCIATES, INC.	NORTHWEST FLORIDA WATER MANAGEMENT DISTRICT JOINER LAKE/GREEN PONDS CHANNEL SAND HILL LAKES MITIGATION BANK								
PROFESSIONAL REGISTRATION NO. 10250	NORTHWEST FLORIDA WATER MANAGEMENT DISTRICT JOINER LAKE/GREEN PONDS CHANNEL SAND HILL LAKES MITIGATION BANK								
PROJECT TITLE: SAND HILL LAKES MITIGATION BANK SHEET TITLE: JOINER LAKE/GREEN PONDS CHANNEL SHEET NO.: C1-2									

CARTER TRACT
 NORTHWEST FLORIDA WATER
 MANAGEMENT DISTRICT
 WASHINGTON COUNTY, FLORIDA

REGISTERED ENGINEER
 1427 N. Brough Street
 Phone: 850-894-1421, Fax: 850-224-0505
 Certificate of Authorization No. 9292

PROFESSIONAL REGISTRATION NO. 10250
 JOHN F. SLIGER II
 P.E. # 30250
John F. Sliger II
 9MAY07

CURVE DATA CUR21
 PI STA. = 20+29.86
 DELTA = 16° 59' 07" (RT)
 D = 28' 38' 52"
 T = 29.86
 L = 59.29
 R = 200.00
 PC STA. = 20+00.00
 PT STA. = 20+59.29

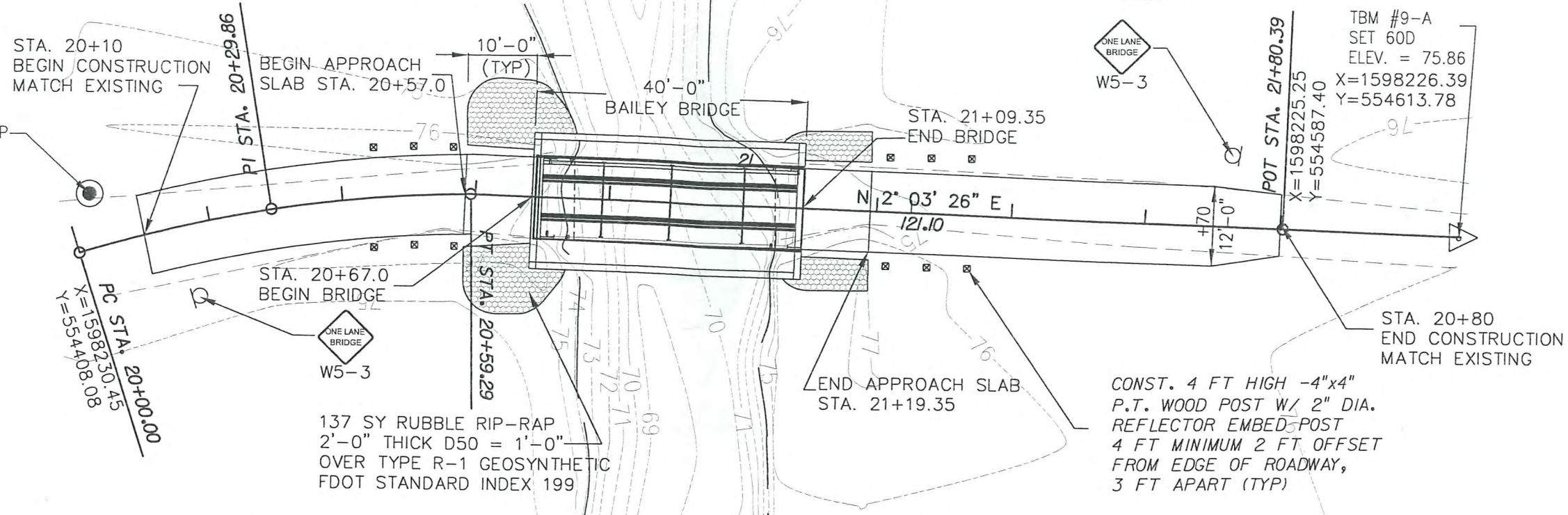
AS-BUILT

TBM #9-B
 SET IRON ROD AND CAP
 "PRI LB NO. 7137"
 ELEV. = 75.68
 X=1598221.52
 Y=554409.45

GRAPHIC SCALE



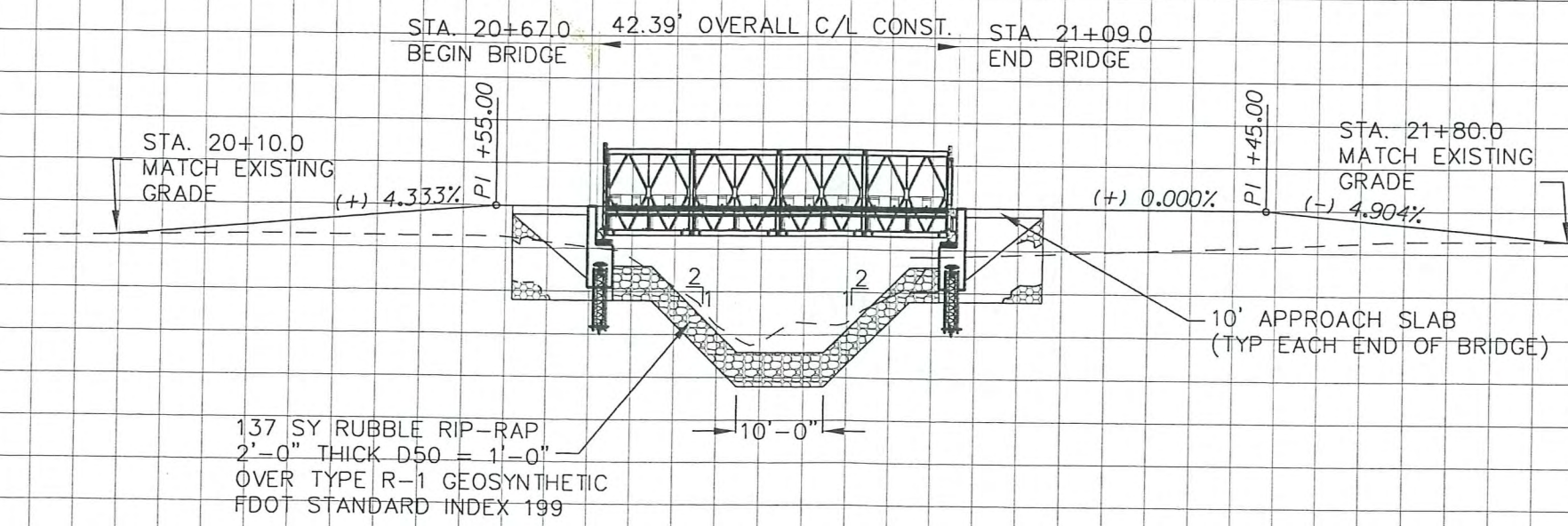
(IN FEET)
 1 inch = 20 ft.



TBM #9-A
 SET 60D
 ELEV. = 75.86
 X=1598226.39
 Y=554613.78

137 SY RUBBLE RIP-RAP
 2'-0" THICK D50 = 1'-0"
 OVER TYPE R-1 GEOSYNTHETIC
 FDOT STANDARD INDEX 199

CONST. 4 FT HIGH -4"x4"
 P.T. WOOD POST W/ 2" DIA.
 REFLECTOR EMBED-POST
 4 FT MINIMUM 2 FT OFFSET
 FROM EDGE OF ROADWAY,
 3 FT APART (TYP)



137 SY RUBBLE RIP-RAP
 2'-0" THICK D50 = 1'-0"
 OVER TYPE R-1 GEOSYNTHETIC
 FDOT STANDARD INDEX 199

10' APPROACH SLAB
 (TYP EACH END OF BRIDGE)

DESIGNER: J. SLIGER	ISSUE DATE: 9MAY07	SYMBOL: ⑥	REVISION:	DATE:
DRAWN BY: C. CAMPOS	COMP. FILE NO.:	SYMBOL: ⑥	REVISION:	DATE:
REVIEWED BY: J. REGISTE	STATE PROJECT NO.:	SYMBOL: ⑥	REVISION:	DATE:
CONSULTANT: REGISTE, SLIGER ENGINEERING, INC.				
PROFESSIONAL REGISTRATION JOHN F. SLIGER II P.E.# 35550				
PROJECT TITLE NORTHWEST FLORIDA WATER MANAGEMENT DISTRICT JOINER LAKE CANAL		PROJECT TRACT CARTER TRACT NORTHWEST FLORIDA WATER MANAGEMENT DISTRICT WASHINGTON COUNTY, FLORIDA		
SHEET NO. C2-2		PROJECT TITLE SAND HILL LAKES MITIGATION BANK		

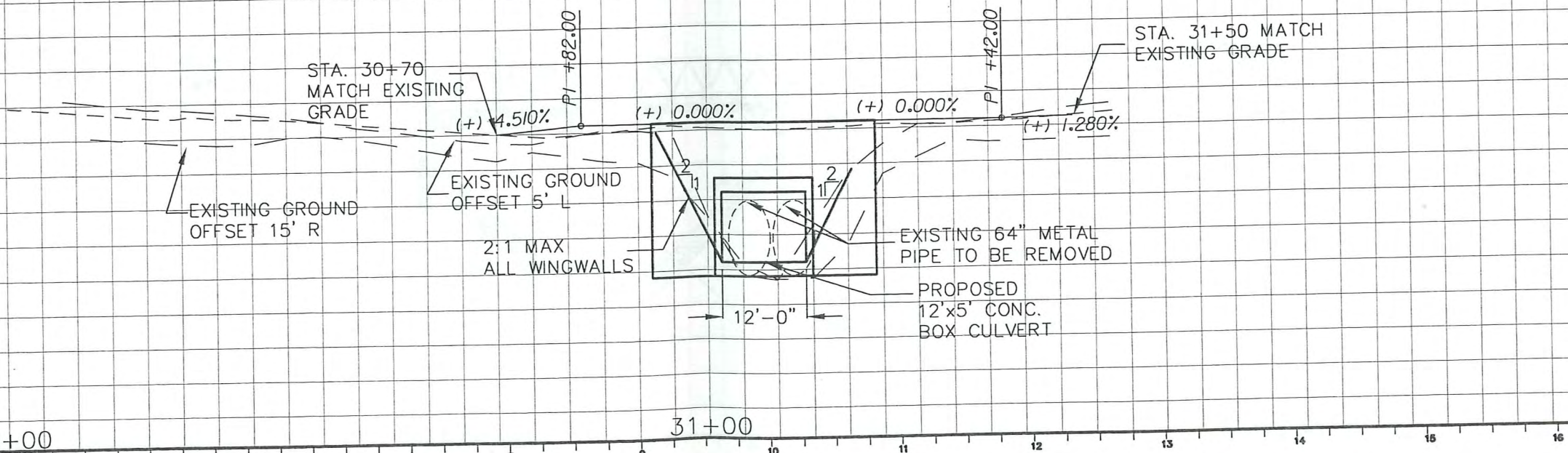
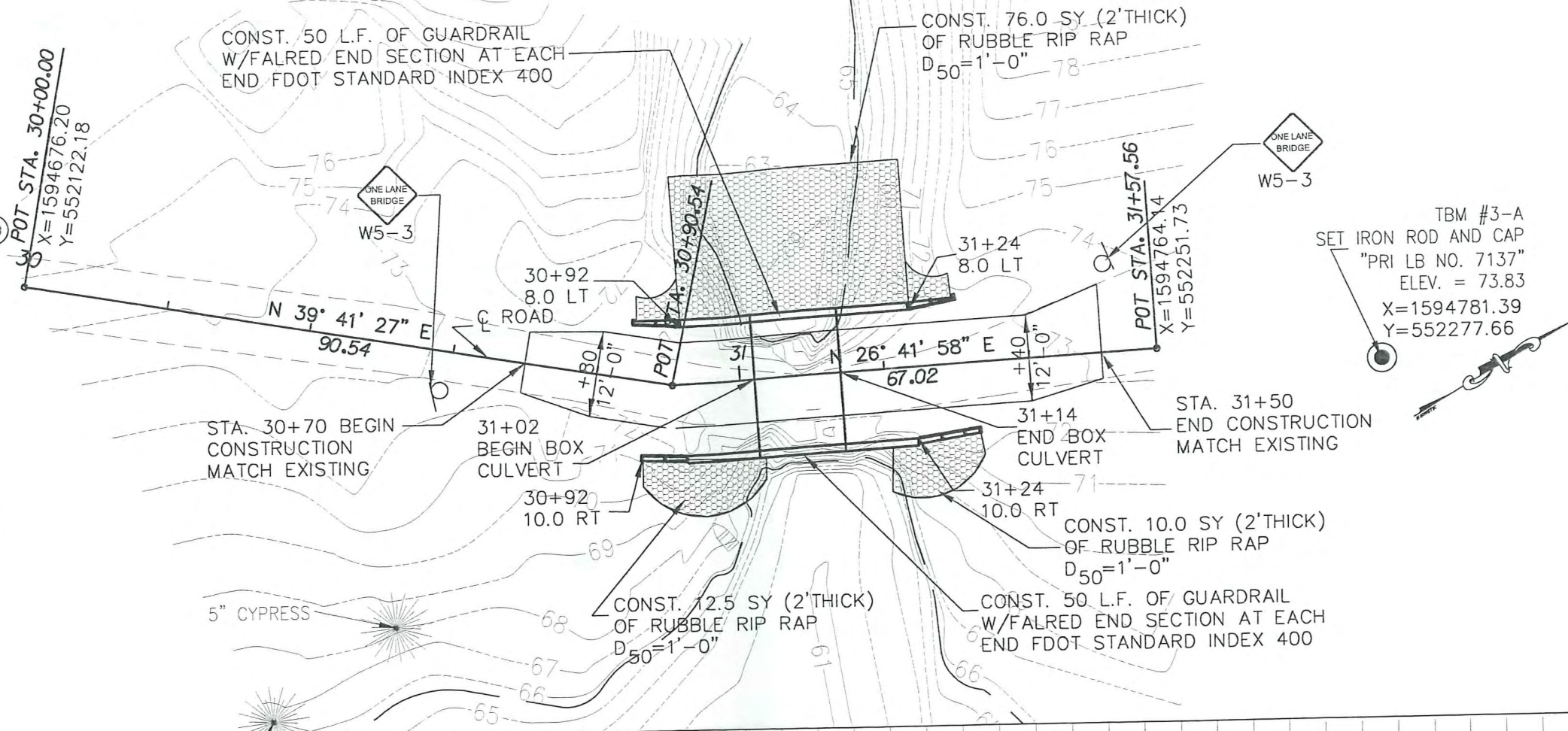
AS-BUILT

TBM #3-B
SET IRON ROD AND CAP
"PRI LB NO. 7137"
ELEV. = 75.91
X=1594667.17
Y=552122.61

GRAPHIC SCALE



(IN FEET)
1 inch = 20 ft.



DATE	REVISION	SYMBOL	REASON
		(C)	
		(E)	

ISSUE DATE: 9MAY07	COMP. FILE NO.:	STATE PROJECT NO.:
DESIGNER: J. SLIGER	DRAWN BY: C. CAMPOS	REVIEWED BY: J. REGISTE
CONSULTANT: REGISTE, SLIGER ENGINEERING, INC.	427 N. Bronough Street Tallahassee, FL 32307, 850-294-0505 Certificate of Authorization No. 9292	

PROFESSIONAL REGISTRATION JOHN F. SLIGER P.E. # 5556	<i>John F. Sliger</i>
--	-----------------------

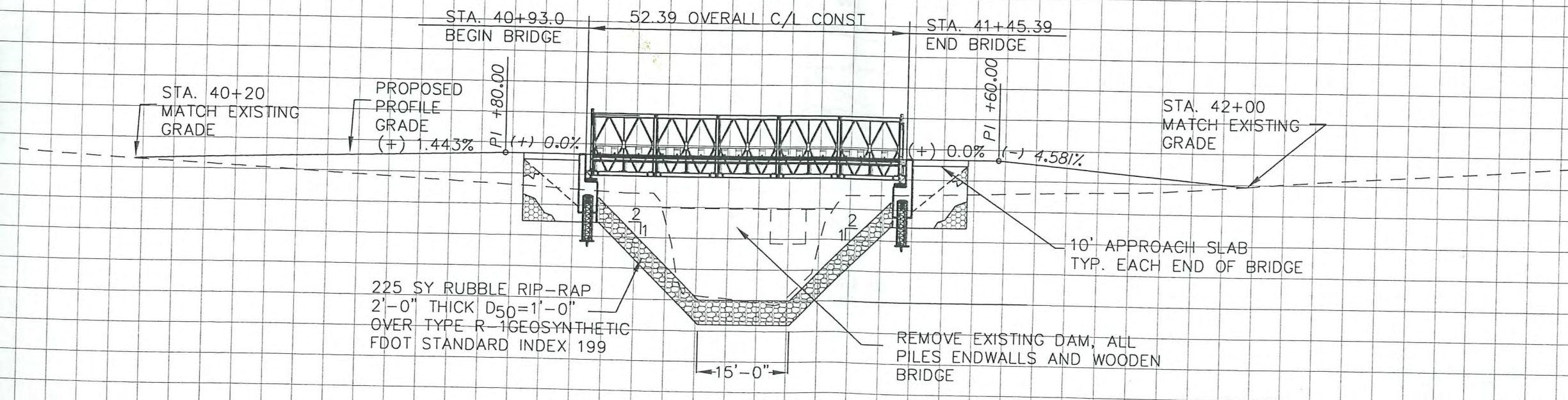
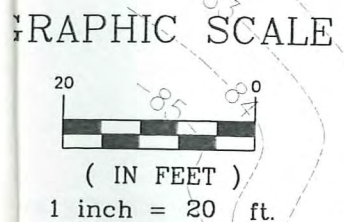
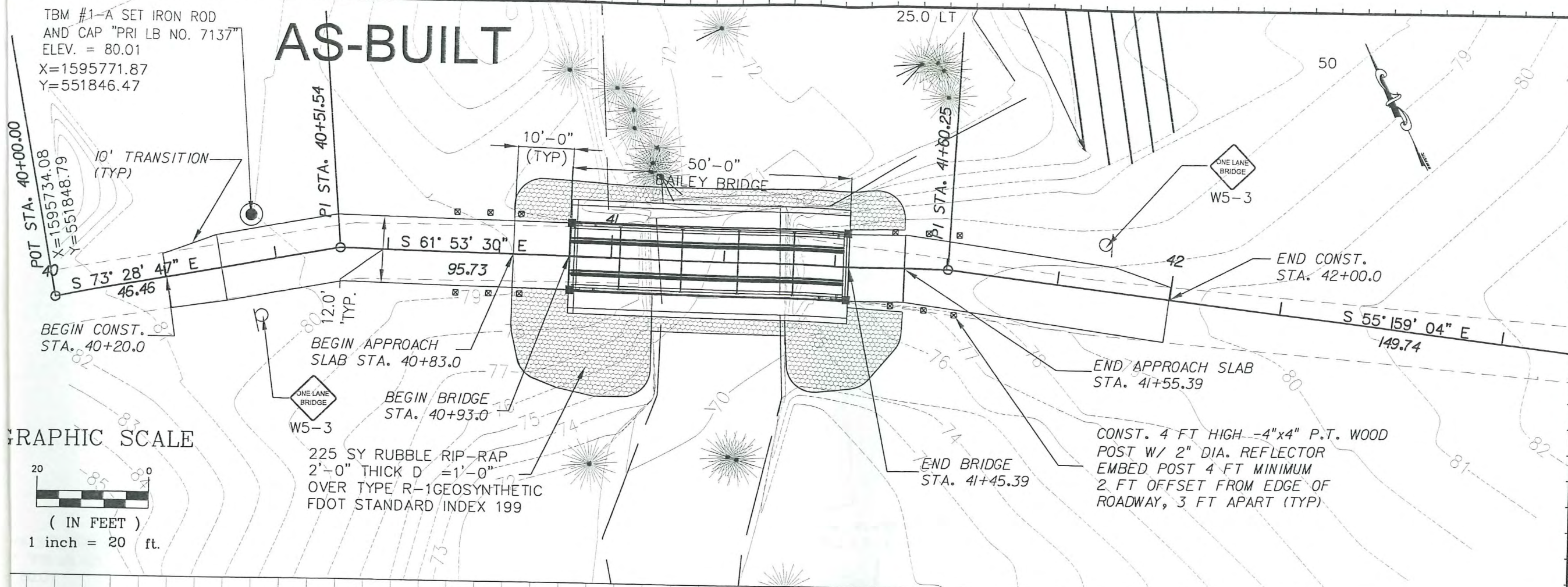
NORTHWEST FLORIDA WATER MANAGEMENT DISTRICT
PLAN AND ELEVATION
POWER LINE POND
SAND HILL LAKES MITIGATION BANK

SHEET NO.	C3-2
-----------	------

CARTER TRACT
NORTHWEST FLORIDA WATER
MANAGEMENT DISTRICT
WASHINGTON COUNTY, FLORIDA

TBM #1-A SET IRON ROD
AND CAP "PRI LB NO. 7137"
ELEV. = 80.01
X=1595771.87
Y=551846.47

AS-BUILT

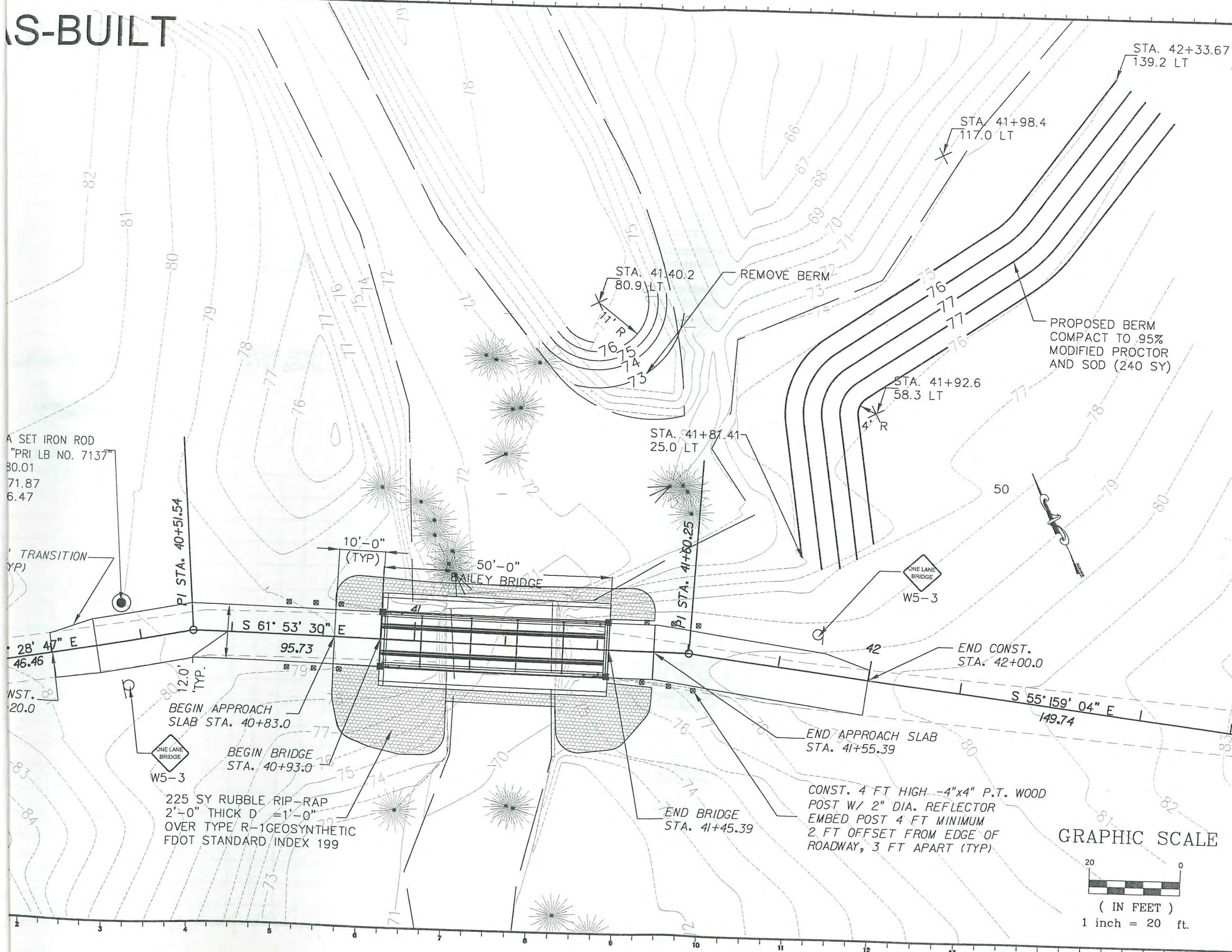


DATE	REVISION	SYMBOL	DATE	REVISION	SYMBOL
		(C)			(G)
ISSUE DATE: 9MAY07	COMPILED FILE NO.	STATE PROJECT NO.	DESIGNER: J. SLIGER DRAWN BY: C. CAMPOS REVIEWED BY: J. REGISTE CONSULTANT: REGISTE, SLIGER ENGINEERING, INC. <small>427 N. Broadway, Suite 101 Tallahassee, FL 32302 Tel: 904-644-4521, Fax: 904-224-0905 Certificate of Authorization No. 9292</small>		
PROJECT TITLE	NORTHWEST FLORIDA WATER MANAGEMENT DISTRICT PLAN AND ELEVATION DYKES MILL POND SAND HILL LAKES MITIGATION BANK				
SHEET NO.	C4-2				

CARTER TRACT
NORTHWEST FLORIDA WATER
MANAGEMENT DISTRICT
WASHINGTON COUNTY, FLORIDA

PROFESSIONAL REGISTRATION
JOHN C. SLIGER I
P.E. # 23450
John C. Sliger I
9 May 07

AS-BUILT



A SET IRON ROD
"PRI LB NO. 7137"
80.01
71.87
6.47

TRANSITION
(TYP)

PI STA. 40+51.54

28' 47" E
46.46
NST. 20.0

BEGIN APPROACH
SLAB STA. 40+83.0

BEGIN BRIDGE
STA. 40+93.0

225 SY RUBBLE RIP-RAP
2'-0" THICK D = 1'-0"
OVER TYPE R-1 GEOSYNTHETIC
FDOT STANDARD INDEX 199

10'-0" (TYP)
50'-0" BAILEY BRIDGE

STA. 41+81.41
25.0 LT
PI STA. 41+80.25

END BRIDGE
STA. 41+45.39

REMOVE BERM

ONE LANE BRIDGE
W5-3

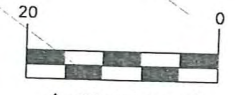
END CONST.
STA. 42+00.0

END APPROACH SLAB
STA. 41+55.39

CONST. 4 FT HIGH -4"x4" P.T. WOOD
POST W/ 2" DIA. REFLECTOR
EMBED POST 4 FT MINIMUM
2 FT OFFSET FROM EDGE OF
ROADWAY, 3 FT APART (TYP)

PROPOSED BERM
COMPACT TO 95%
MODIFIED PROCTOR
AND SOD (240 SY)

GRAPHIC SCALE

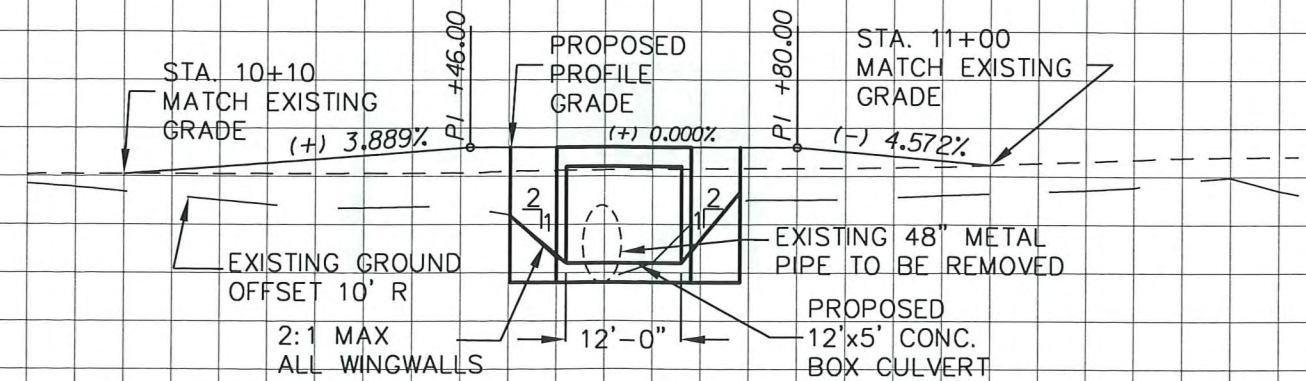
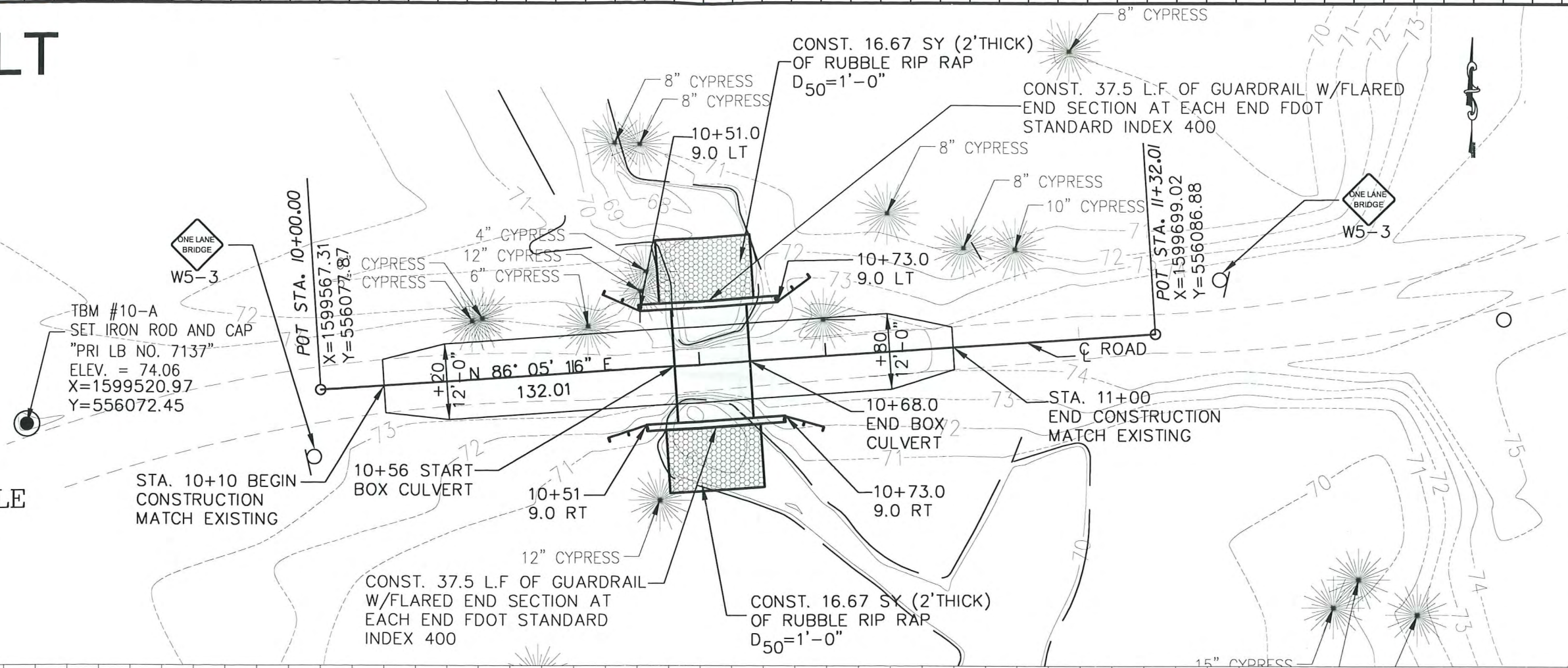
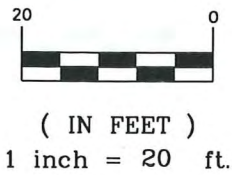


(IN FEET)
1 inch = 20 ft.

DESIGNER: J. SLIGER	ISSUE DATE: 9MAY07	SYMBOL	DATE	REVISION
DRAWN BY: C. CAMPOS	COMP. FILE NO.:	SYMBOL	DATE	REVISION
REVIEWED BY: J. REGISTE	STATE PROJECT NO.:	SYMBOL	DATE	REVISION
CONSULTANT:		SYMBOL	DATE	REVISION
PROFESSIONAL REGISTRATION NO. 11111 FOR II P.E.# 3555				
PROJECT TITLE NORTHWEST FLORIDA WATER MANAGEMENT DISTRICT SAND HILL LAKES MITIGATION BANK PROPOSED BERM DYKES MILL POND				
PROJECT TITLE CARTER TRACT NORTHWEST FLORIDA WATER MANAGEMENT DISTRICT WASHINGTON COUNTY, FLORIDA				
REGISTERED ENGINEERING, INC. 1427 N. Bronough Street PH 850-854-4210 FAX 850-224-0505 Certificate of Authorization No. 9292				
SHEET NO. C4-3				

AS-BUILT

GRAPHIC SCALE



DATE	REVISION	SYMBOL	DATE	REVISION	SYMBOL	DATE	REVISION	SYMBOL
PROJECT TITLE: NORTHWEST FLORIDA WATER MANAGEMENT DISTRICT SHEET TITLE: JOINER LAKE/GREEN PONDS CHANNEL PROJECT TITLE: SAND HILL LAKES MITIGATION BANK								
SHEET NO. C1-2								
DESIGNER: J. SLIGER DRAWN BY: C. CAMPOS REVIEWED BY: J. REGISTE			ISSUE DATE: 5MAY07 COMP. FILE NO.: STATE PROJECT NO.:			CONSULTANT: REGISTE, SLIGER ENGINEERING, INC. 1427 N. Bronough Street Tallahassee, FL 32303 Telephone: 904-924-9505 Certificate of Authorization No. 9292		
PROFESSIONAL REGISTRATOR: JOHN F. SLIGER P.E. # 21920 <i>(Signature)</i> 5 MAY 07								
NORTHWEST FLORIDA WATER MANAGEMENT DISTRICT CARTER TRACT NORTHWEST FLORIDA WATER MANAGEMENT DISTRICT WASHINGTON COUNTY, FLORIDA								

AS-BUILT

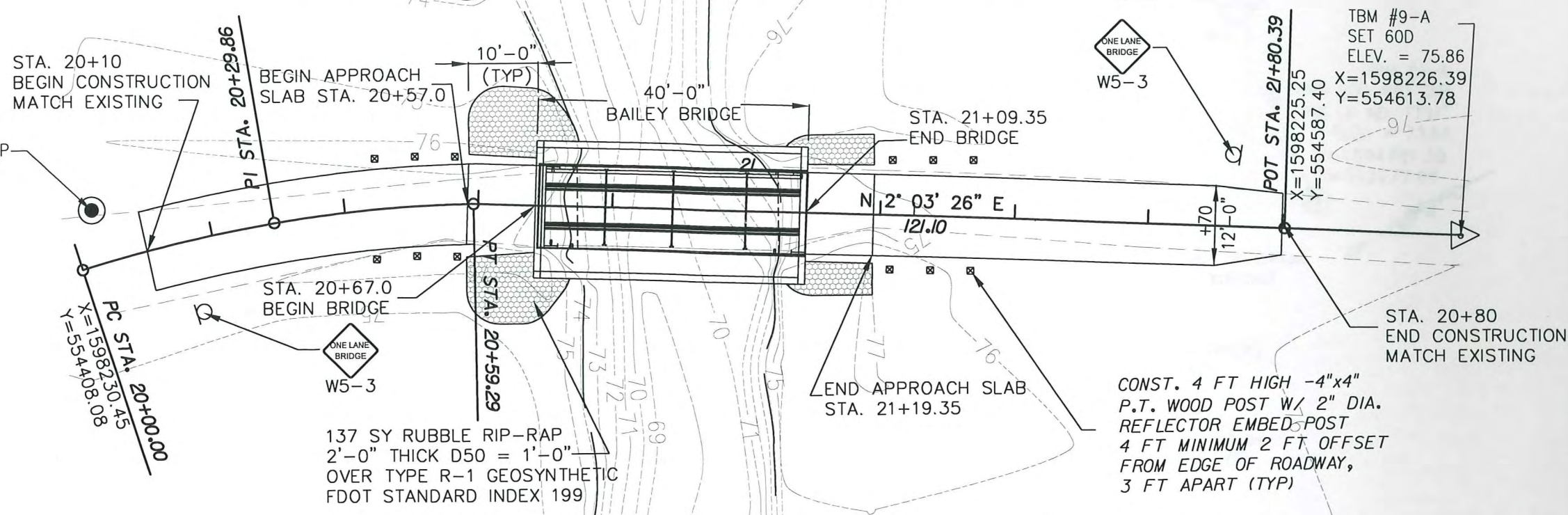
CURVE DATA CUR21
 PI STA. = 20+29.86
 DELTA = 16° 59' 07" (RT)
 D = 28' 38' 52"
 T = 29.86
 L = 59.29
 R = 200.00
 PC STA. = 20+00.00
 PT STA. = 20+59.29

TBM #9-B
 SET IRON ROD AND CAP
 "PRI LB NO. 7137"
 ELEV. = 75.68
 X=1598221.52
 Y=554409.45

GRAPHIC SCALE

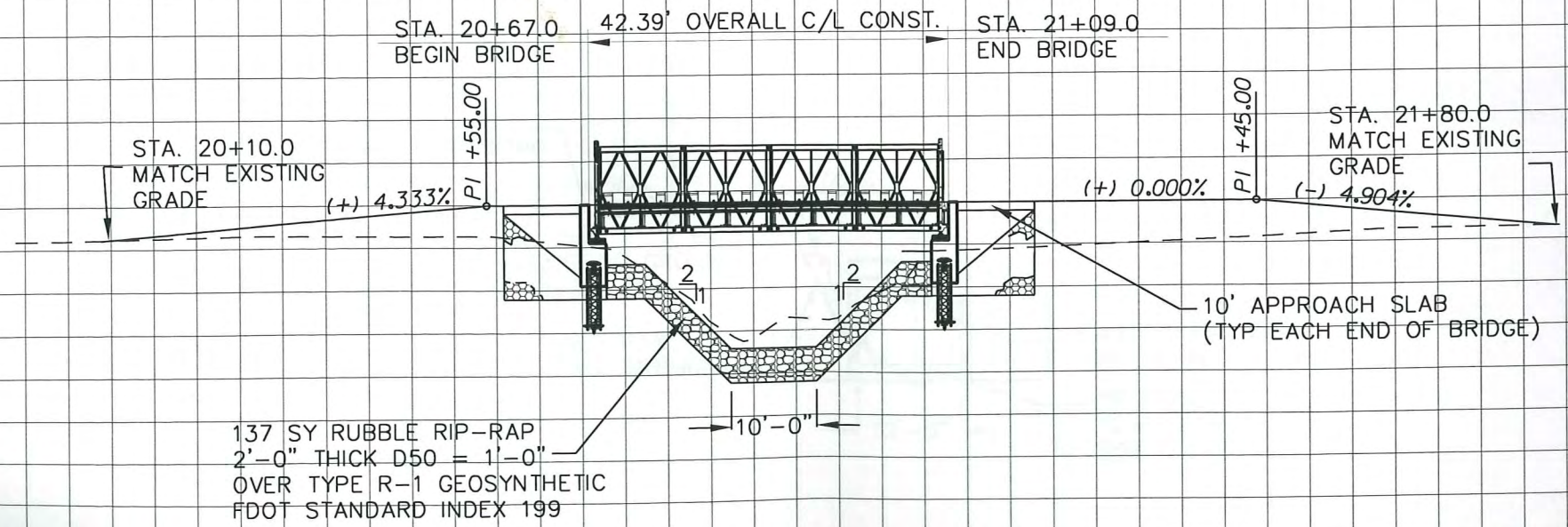


(IN FEET)
 1 inch = 20 ft.



137 SY RUBBLE RIP-RAP
 2'-0" THICK D50 = 1'-0"
 OVER TYPE R-1 GEOSYNTHETIC
 FDOT STANDARD INDEX 199

CONST. 4 FT HIGH -4"x4"
 P.T. WOOD POST W/ 2" DIA.
 REFLECTOR EMBED POST
 4 FT MINIMUM 2 FT OFFSET
 FROM EDGE OF ROADWAY,
 3 FT APART (TYP)



DATE	REVISION	SYMBOL	DATE	REVISION	SYMBOL	DATE	REVISION	SYMBOL	DATE	REVISION	SYMBOL
PROJECT TITLE: NORTHWEST FLORIDA WATER MANAGEMENT DISTRICT JOINER LAKE CANAL SHEET NO.: C2-2 PROJECT TITLE: SAND HILL LAKES MITIGATION BANK CONSULTANT: REGISTE, SLIGER ENGINEERING, INC. 427 N. Bronough Street Tallahassee, FL 32302, 904-224-0905 Certificate of Authorization No. 9292											
DESIGNER:	J. SLIGER	ISSUE DATE:	9MAY07	COMP. FILE NO.:		STATE PROJECT NO.:		DATE:		SYMBOL:	
DRAWN BY:	C. CAMPOS	ISSUE DATE:	9MAY07	COMP. FILE NO.:		STATE PROJECT NO.:		DATE:		SYMBOL:	
REVIEWED BY:	J. REGISTE	ISSUE DATE:	9MAY07	COMP. FILE NO.:		STATE PROJECT NO.:		DATE:		SYMBOL:	
CONSULTANT:	REGISTE, SLIGER ENGINEERING, INC.	ISSUE DATE:	9MAY07	COMP. FILE NO.:		STATE PROJECT NO.:		DATE:		SYMBOL:	

AS-BUILT

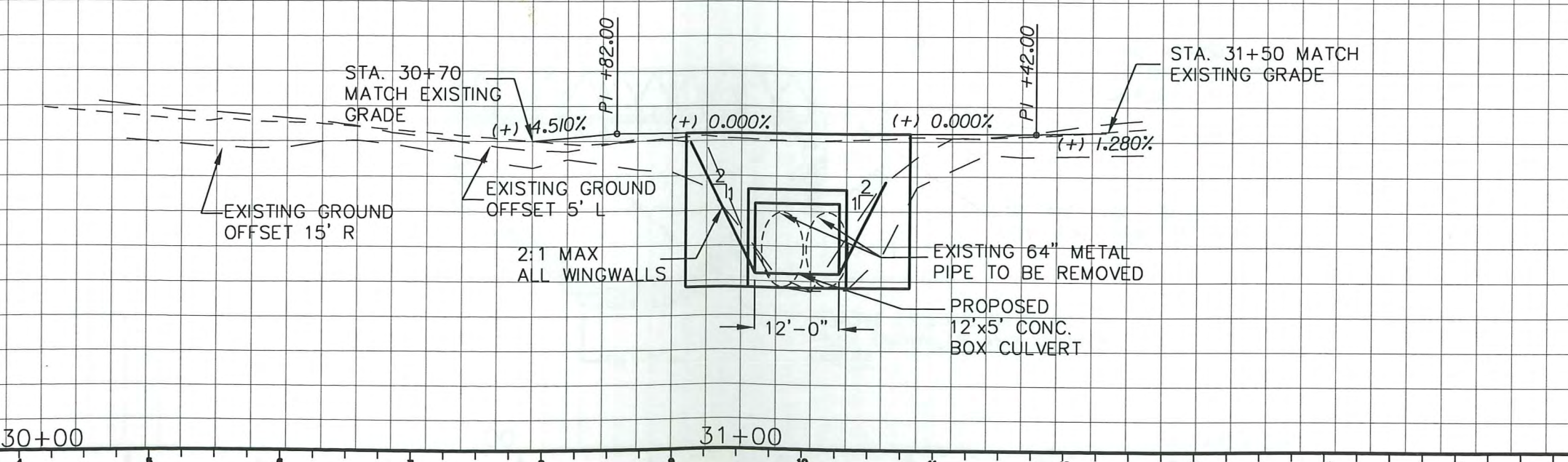
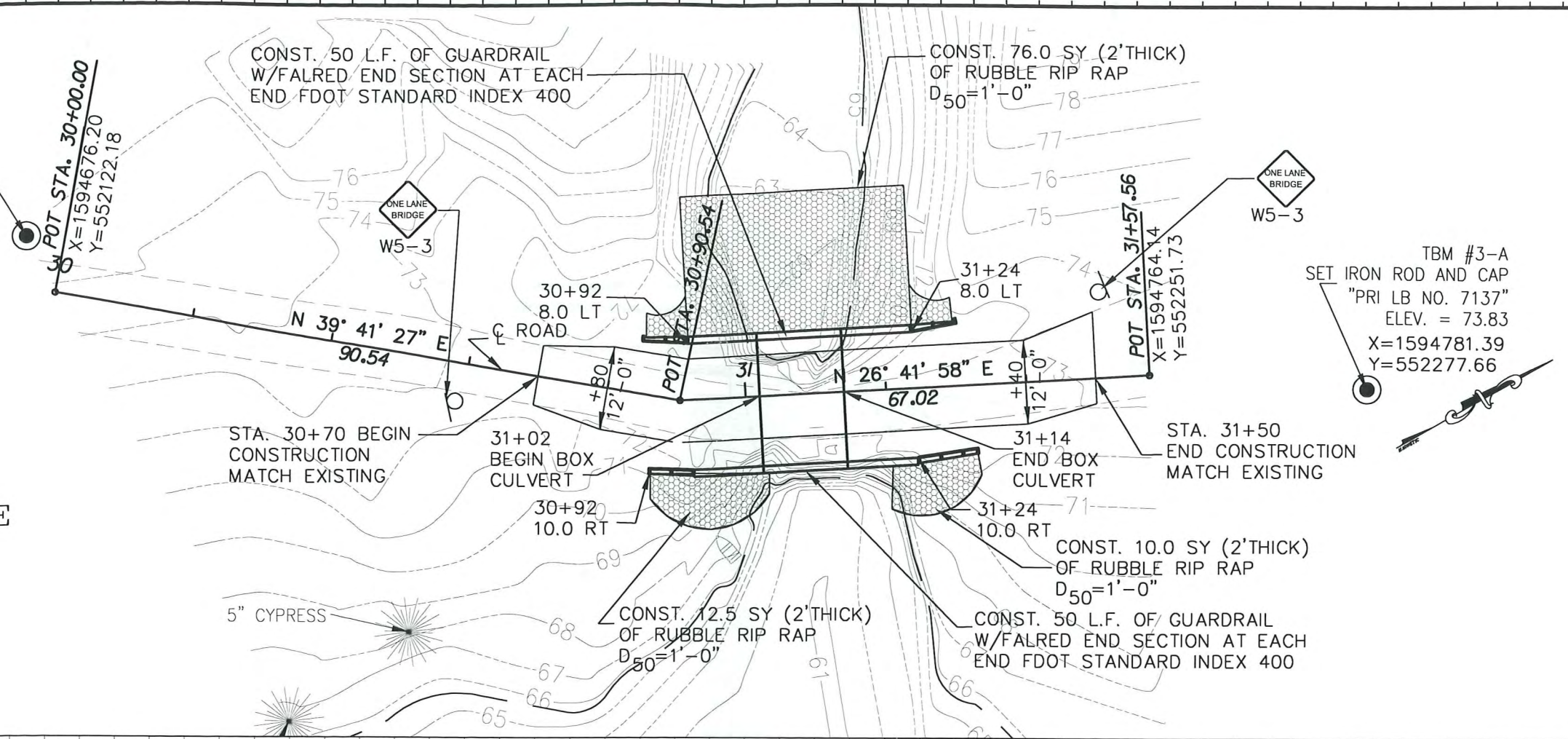
TBM #3-B
 SET IRON ROD AND CAP
 "PRI LB NO. 7137"
 ELEV. = 75.91
 X=1594667.17
 Y=552122.61

TBM #3-A
 SET IRON ROD AND CAP
 "PRI LB NO. 7137"
 ELEV. = 73.83
 X=1594781.39
 Y=552277.66

GRAPHIC SCALE



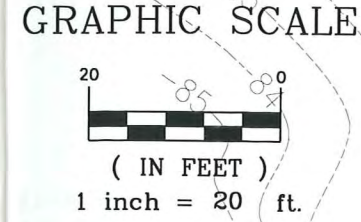
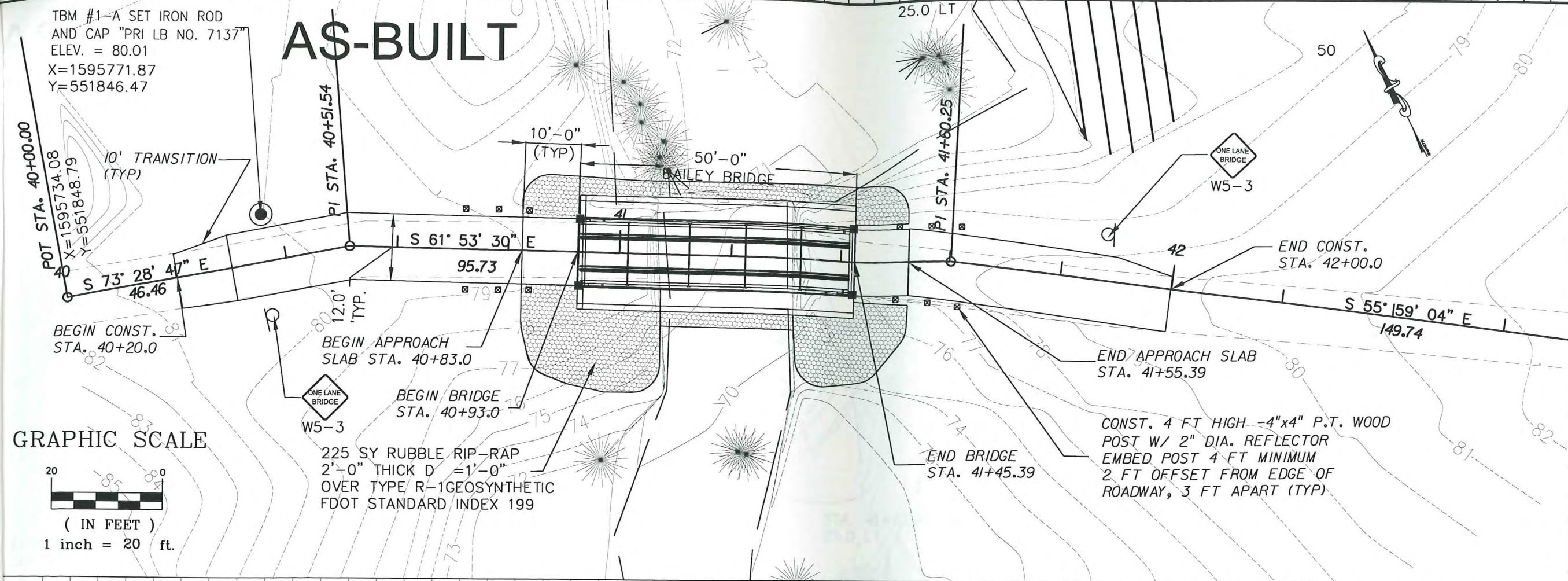
(IN FEET)
 1 inch = 20 ft.



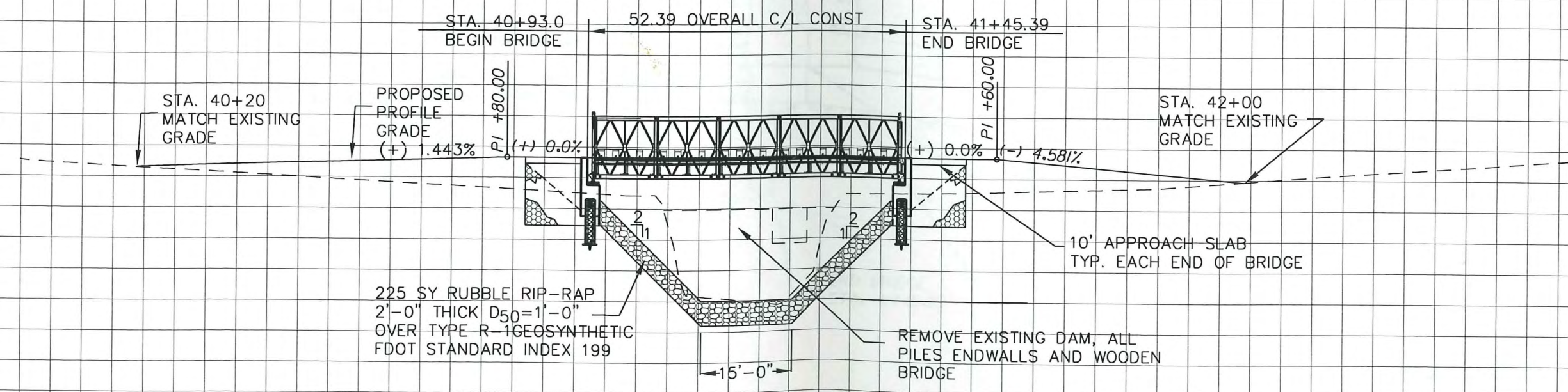
DESIGNER: J. SLIGER	ISSUE DATE: 9MAY07	SYMBOL: (C)	DATE: (C)	REVISION: (C)
DRAWN BY: C. CAMPOS	COMP. FILE NO.:	SYMBOL: (B)	DATE: (B)	REVISION: (B)
REVIEWED BY: J. REGISTE	STATE PROJECT NO.:	SYMBOL: (A)	DATE: (A)	REVISION: (A)
CONSULTANT: REGISTE, SLIGER ENGINEERING, INC.	1427 N. Bronough Street PH 850-894-4321, FX 850-224-0505 Certificate of Authorization No. 9292	CARTER TRACT NORTHWEST FLORIDA WATER MANAGEMENT DISTRICT WASHINGTON COUNTY, FLORIDA		
PROFESSIONAL REGISTRATION: JOHN F. SLIGER, I. P.E. # 5500	NORTHWEST FLORIDA WATER MANAGEMENT DISTRICT PLAN AND ELEVATION POWER LINE POND			
SAND HILL LAKES MITIGATION BANK				SHEET NO. 3-2

TBM #1-A SET IRON ROD
AND CAP "PRI LB NO. 7137"
ELEV. = 80.01
X=1595771.87
Y=551846.47

AS-BUILT

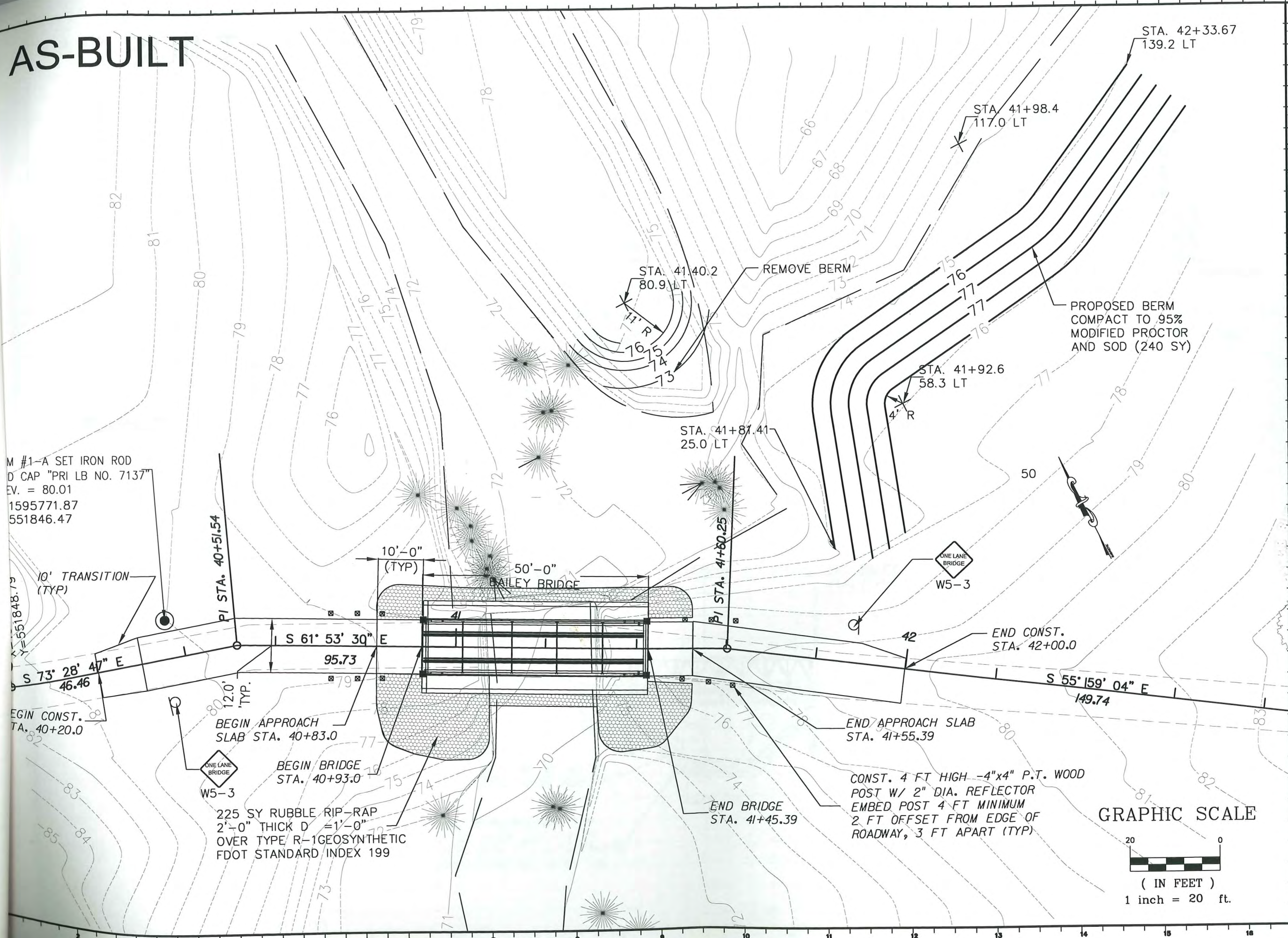


DATE	REVISION	SYMBOL	DATE	REVISION	SYMBOL	DATE	REVISION	SYMBOL	DATE	REVISION
PROJECT TITLE NORTHWEST FLORIDA WATER MANAGEMENT DISTRICT PLAN AND ELEVATION DYKES MILL POND SAND HILL LAKES MITIGATION BANK										
DESIGNER : J. SLIGER DRAWN BY : C. CAMPOS REVIEWED BY : J. REGISTE										
ISSUE DATE : 9MAY07 COMP. FILE NO. : STATE PROJECT NO. :										
CONSULTANT : REGISTE, SLIGER ENGINEERING, INC. 1427 N. Brough Street Tallahassee, FL 32304 Phone: 904-854-4321 Fax: 904-850-2244 Certificate of Authorization No. 9292										
PROFESSIONAL REGISTRATION JOHN F. SLIGER II P.E. # 53550										
Signature: <i>John F. Sliger II</i> Signature: <i>C. Campos</i> Signature: <i>J. Registe</i>										
PROJECT TRACT CARTER TRACT NORTHWEST FLORIDA WATER MANAGEMENT DISTRICT WASHINGTON COUNTY, FLORIDA										
SHEET NO. C4-2										



AS-BUILT

M #1-A SET IRON ROD
 D CAP "PRI LB NO. 7137"
 EV. = 80.01
 1595771.87
 551846.47



DATE	REVISION	SYMBOL	DATE	REVISION	SYMBOL	DATE	REVISION	SYMBOL
		(C)			(C)			(C)
		(G)			(G)			(G)

ISSUE DATE: 9MAY07	COMP. FILE NO.:	STATE PROJECT NO.:
DESIGNER: J. SLIGER	DRAWN BY: C. CAMPOS	CONSULTANT:
PROFESSIONAL REGISTRATION: JOHN F. SLIGER II, P.E. 33350	REVIEWED BY: J. REGISTE	REGISTE, SLIGER ENGINEERING, INC. 1427 N. Broward Blvd., Suite 305 Ft. Lauderdale, FL 33305 PH 954-584-4321, FX 954-224-0505 Certificate of Authorization No. 2522

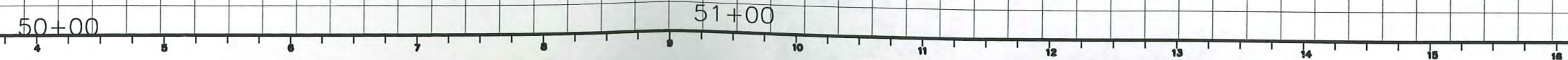
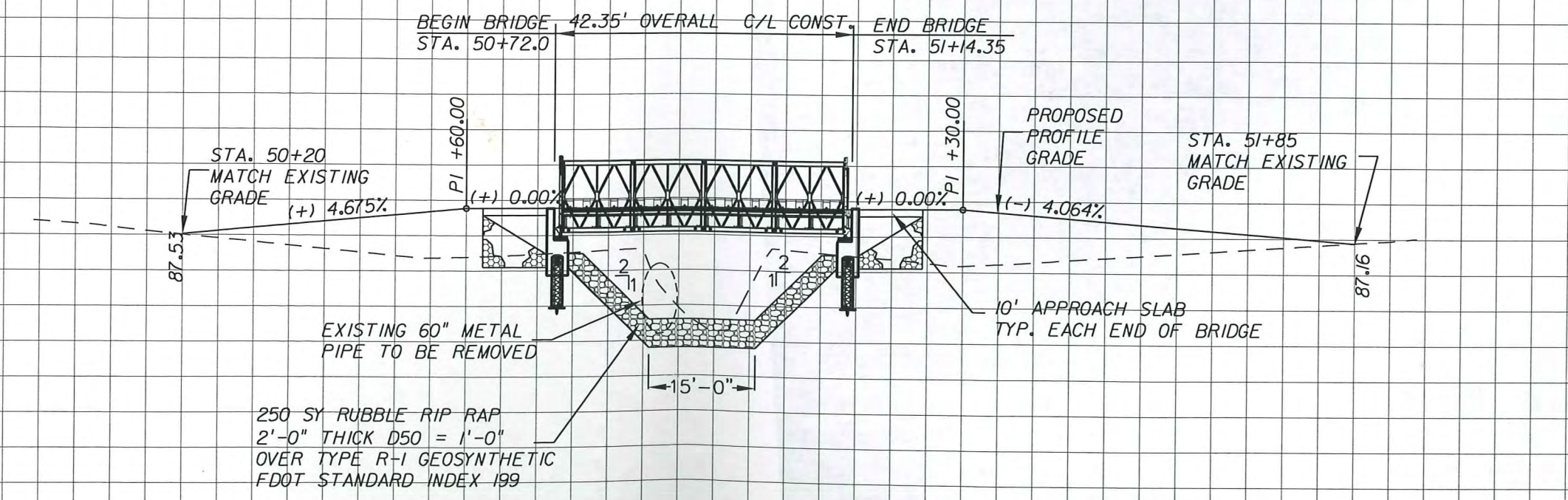
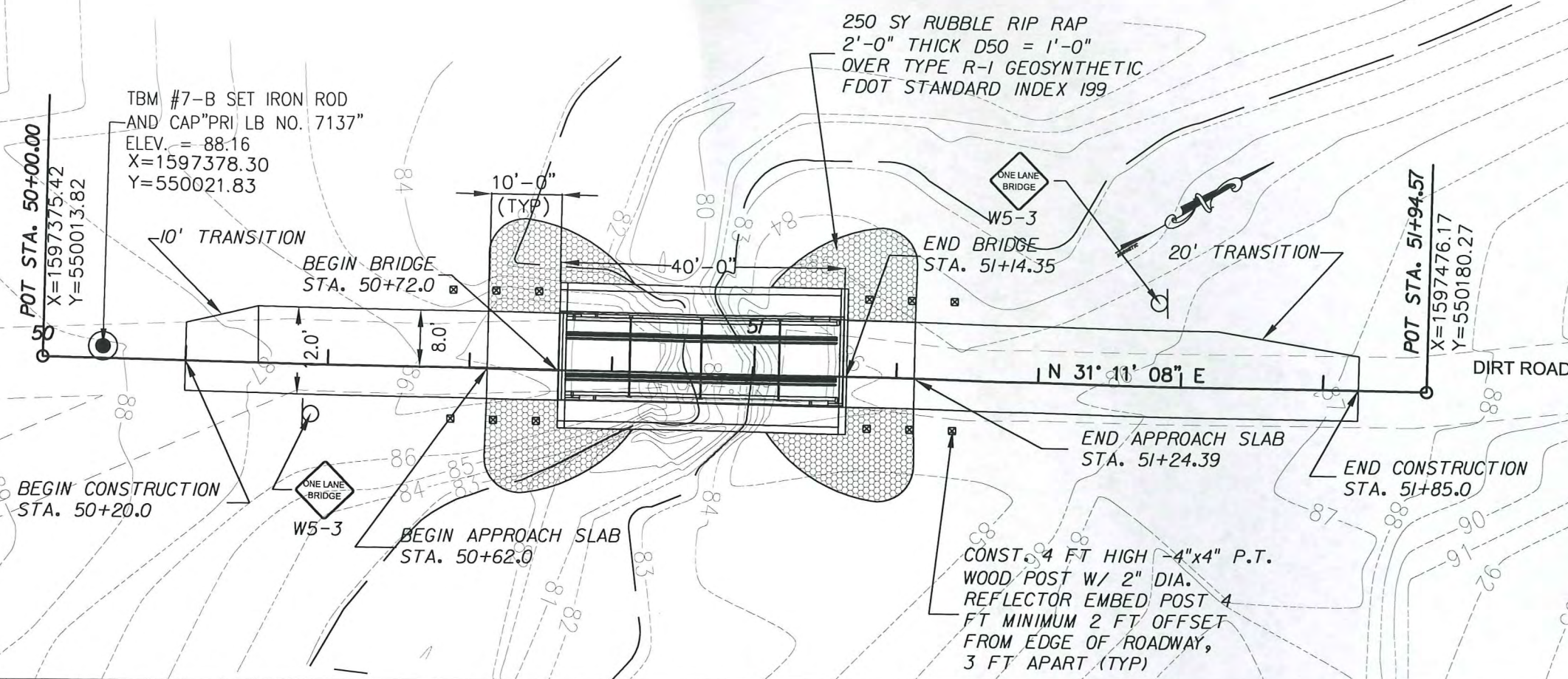
NORTHWEST FLORIDA WATER MANAGEMENT DISTRICT	PROJECT TITLE: SAND HILL LAKES MITIGATION BANK
PROPOSED BERM	
DYKES MILL POND	
C4-3	

AS-BUILT

GRAPHIC SCALE



(IN FEET)
1 inch = 20 ft.



DATE	REVISION	SYMBOL	DATE	REVISION	SYMBOL
ISSUE DATE: 9MAY07	COMP. FILE NO.:	STATE PROJECT NO.:	ISSUED BY: J. SLIGER	PROFESSIONAL REGISTRATION NO.:	1427 N. Broadway Street Tallahassee, FL 32304 Phone: 904-954-4521 Fax: 904-224-0505 Certificate of Authorization No. 9292
			DRAWN BY: C. CAMPOS		
			REVIEWED BY: J. REGISTE		
<p>NORTHWEST FLORIDA WATER MANAGEMENT DISTRICT PLAN AND ELEVATION GREENWELL BRIDGE</p> <p>PROJECT TITLE SAND HILL LAKES MITIGATION BANK</p>					
<p>SHEET NO. C5-2</p>					