

MITIGATION ATTACHMENT

SR 69 Graves Creek Bridge

FDOT FIN No. 423234-1-C8-01
FDEP Permit No. 07-0312650-001-EI
SAJ-2012-02025 NW-AWP

April 19, 2013

Impact: 0.74 Acre of Non-forested Wetlands

Mitigation: Tates Hell – Whiskey George / Sumatra Mitigation Area (UWRMP 5.5.9)

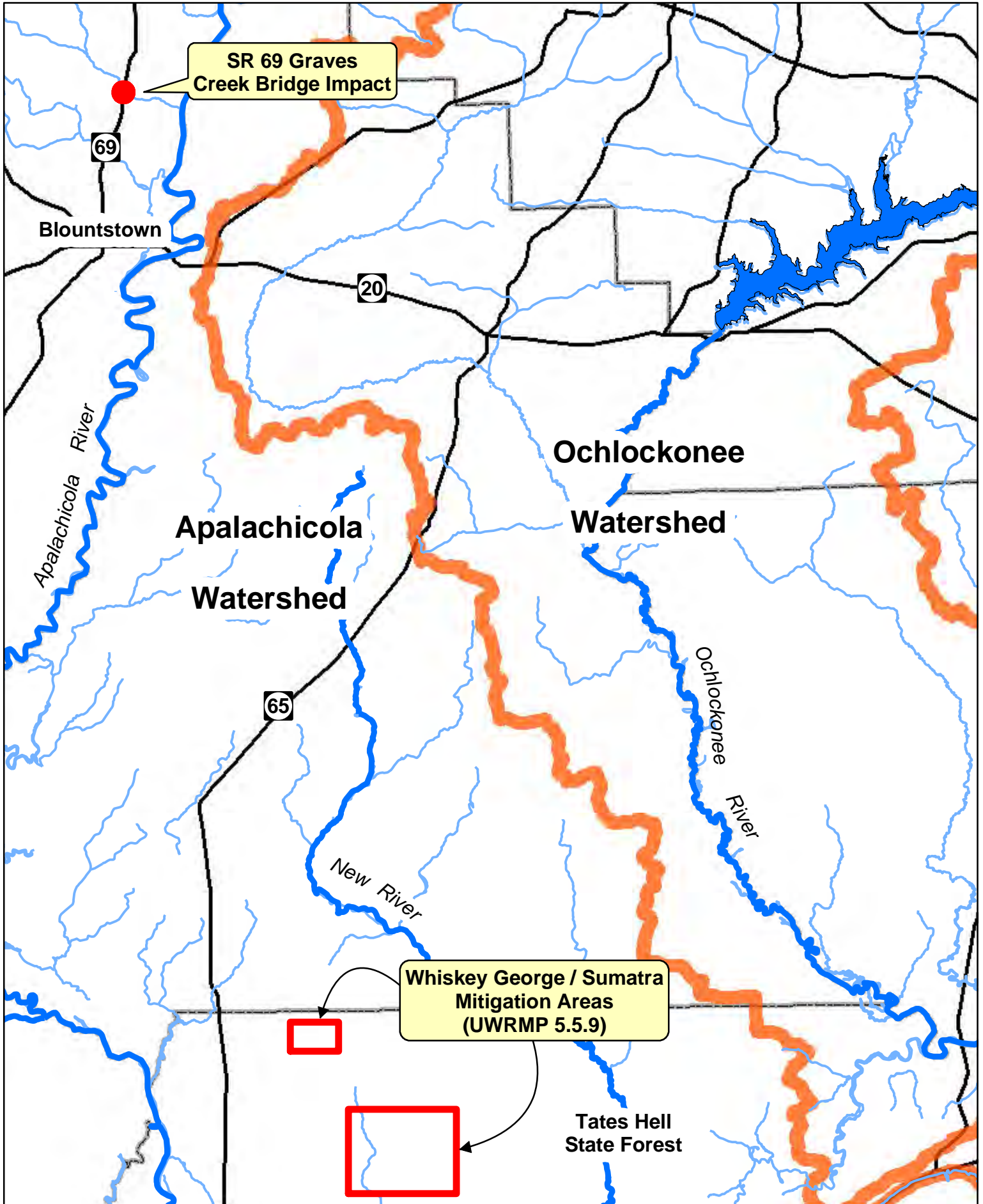
Mitigation for wetland impacts associated with replacement of the SR 69 Graves Creek Bridge will be accomplished via debiting credits from the Tates Hell – Whiskey George / Sumatra Mitigation Area (UWRMP 5.5.9) credit ledger. It is anticipated that <1 UMAM credit will be necessary to offset this impact; the exact number to be dictated by state and federal permit conditions. Debiting of credits will occur upon receipt of FDOT funds and issuance of state and federal permits.

This mitigation appropriately offsets the impacts because the impacts and mitigation are (1) within the same watershed (i.e., the Apalachicola River watershed), and (2) are similar forested palustrine wetlands.

Ample mitigation credits (>18 UMAM credits) are currently available at the Tates Hell – Whiskey George / Sumatra Mitigation Area (UWRMP 5.5.9) to offset this impact. As such, there will be no delay between initiation of work and implementation of mitigation.

This impact is not within the service area of any public or private mitigation bank.

SR 69 Graves Creek Bridge in Relation to Whiskey George / Sumatra Mitigation Area



SR 69 Graves
Creek Bridge Impact

69

Blountstown

20

Apalachicola River

Apalachicola

Watershed

Ochlockonee

Watershed

65

New River

Ochlockonee River

Whiskey George / Sumatra
Mitigation Areas
(UWRMP 5.5.9)

Tate's Hell
State Forest

0 10 20 Miles



SR 69 Graves Creek Bridge



Tates Hell - Whiskey George / Sumatra Mitigation Areas (UWRMP 5.5.9)

