

**SR 65 (FROM FRANKLIN/LIBERTY COUNTY LINE TO A POINT 25.6 MILES NORTH)**

April 2, 2010

Impact:

0.59 Acre / 0.35 UMAM Functional Loss

- 0.52 Acre / 0.29 UMAM (Herbaceous—FLUCCS 641)
- 0.07 Acre / 0.06 UMAM (Forested—FLUCCS 630)

Mitigation:

The unanimous consensus of the Interagency Review Team (IRT)<sup>1</sup> for the Northwest Florida Umbrella, Watershed-based, Regional Mitigation Plan (UWRMP or Umbrella Plan) is that debiting UMAM credits from UWRMP Project 5.5.9 – Whiskey George / Sumatra will appropriately offset wetland impacts associated with FDOT shoulder work on SR 65 from the Franklin/Liberty County Line to a point 25.6 miles north (see IRT Meeting Minutes for 2/17/10 posted at [http://nwfwmdwetlands.com/nwfwmd/pdfs/IRT\\_FEB\\_2010\\_Minutes\\_030110a.pdf](http://nwfwmdwetlands.com/nwfwmd/pdfs/IRT_FEB_2010_Minutes_030110a.pdf)).

IRT members present at the 2/17/2010 meeting:

- Randy Tuner – USACE (Jacksonville)
- David Rydene – NMFS (St. Petersburg)
- Terry Gilbert – URS (FWCC Consultant)
- Joy Giddens – FDOT (Chipley)
- Tracey Ludyjan-Ybarra – FDOT (Chipley)
- Duncan Cairns – NFWFMD (Tallahassee)
- David Clayton – NFWFMD (Tallahassee)
- Robert Lide – NFWFMD (Tallahassee)

IRT members not present at the 2/17/2010 meeting who, via subsequent e-mail, approved Whiskey George / Sumatra as appropriate mitigation for the SR 65 impacts:

- Cecelia Harper – USEPA (Atlanta)
- Mary Mittiga – USFWS (Panama City)
- Ted Hoehn – FWCC (Tallahassee)

The IRT consensus is based on the following:

- 1) The mitigation is proximate to the impact (<3 miles at the closest approach).
- 2) The mitigation is “in-kind”—both herbaceous and forested systems are being restored at the Whiskey George and Sumatra sites.

---

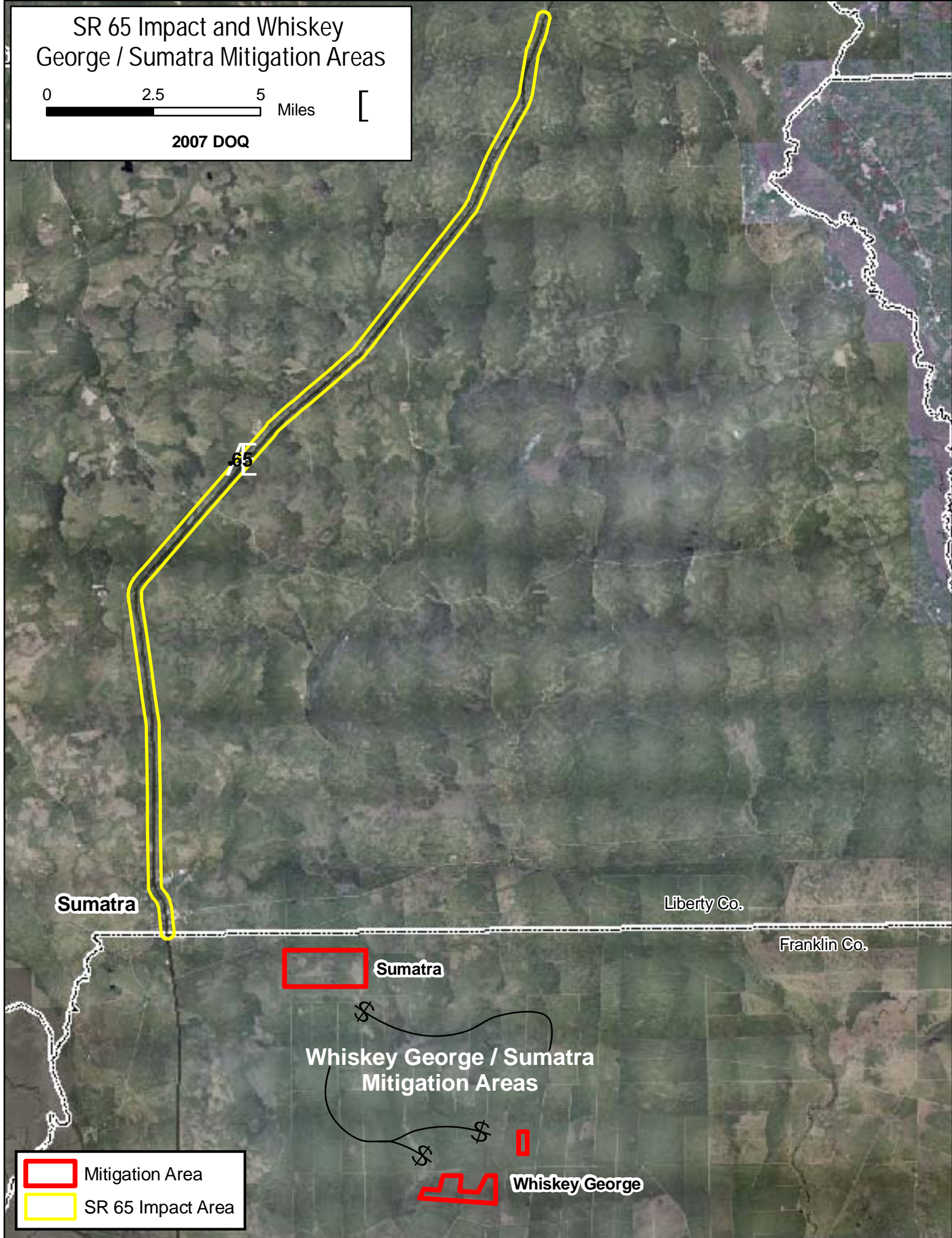
<sup>1</sup> Andrew Phillips, USACE and chair of the IRT is on temporary deployment to Afghanistan and was unable to participate. Randy Turner is acting chair in Mr. Phillips absence.

- 3) Both mitigation and impact areas are in the same Level IV Ecoregion (i.e., Gulf Coast Flatwoods).
- 4) Both mitigation and impact areas are within the same watershed (i.e., Apalachicola).
- 5) Ample credits are available at Whiskey George / Sumatra (estimated at 26.74 UMAM—10.87 herbaceous and 15.87 forested) and easily cover the 0.35 UMAM credit needed to offset the SR 65 impacts.
- 6) Timeliness in that the mitigation has already been implemented (hydrologic restoration completed in 2009; restoration of herbaceous and forested vegetation continuing).
- 7) The low (negligible) risk of mitigation failure, the efficiency of using an existing mitigation project within the Umbrella Plan (an in-lieu fee program) for an impact associated with a linear road project, and the reliability of a resource agency of the state in maintaining implemented mitigation.
- 8) If necessary, the mitigation areas provide ample opportunity for receiving T&E plant species that could potentially be affected by SR 65 improvements.

# SR 65 Impact and Whiskey George / Sumatra Mitigation Areas

0 2.5 5 Miles

2007 DOQ



Sumatra

Liberty Co.

Franklin Co.

Sumatra

Whiskey George / Sumatra  
Mitigation Areas

Whiskey George

- Mitigation Area
- SR 65 Impact Area