

**NORTHWEST FLORIDA WATER MANAGEMENT DISTRICT**

**SURPLUS PARCEL ASSESSMENT**

Tract: Whirlpool Road

Water Management Area (WMA): Escambia River

County: Escambia

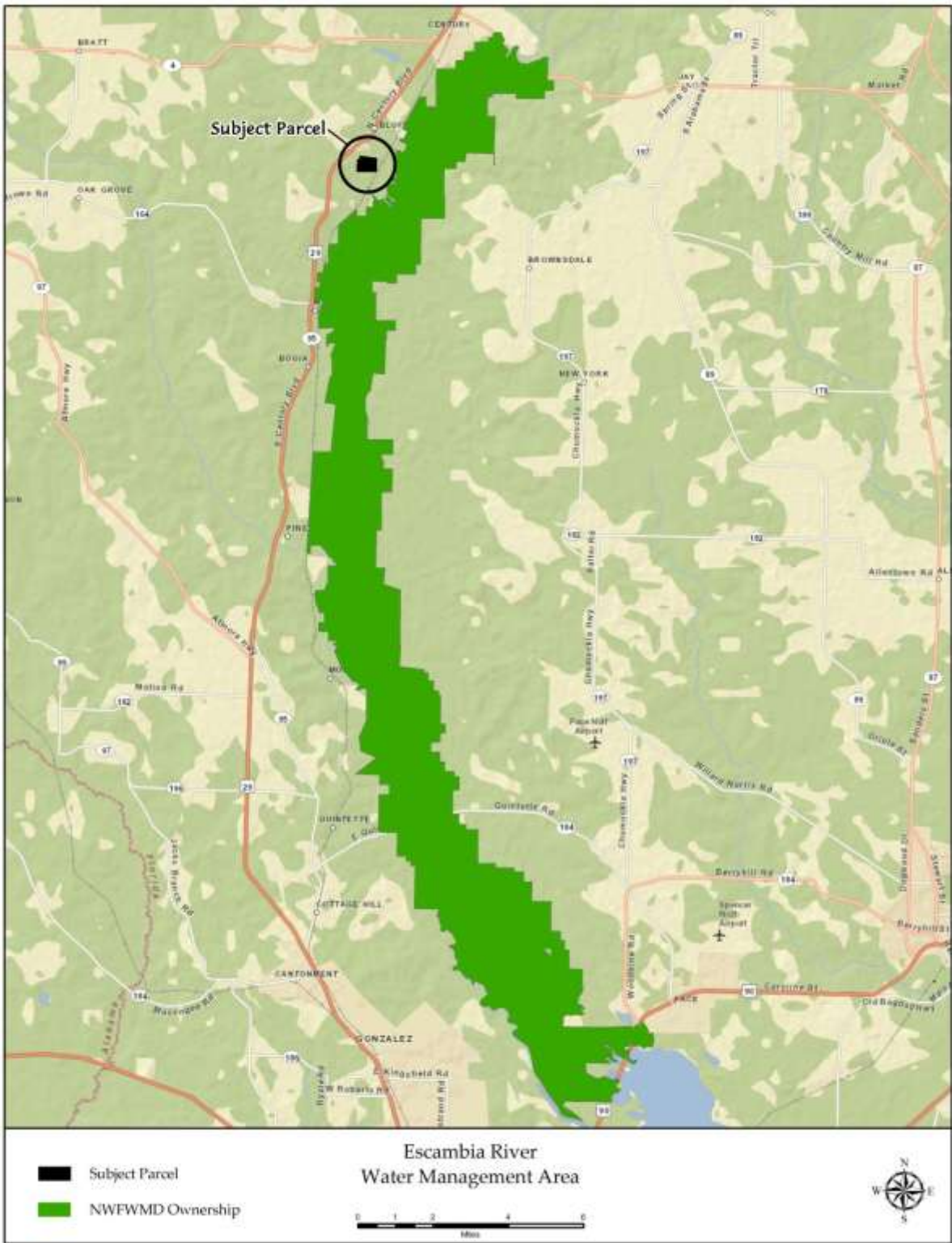
Acreage: 115

Tract Description: The tract is primarily wetlands and drains into the Escambia River floodplain, but is an isolated parcel separated by a railroad from other District lands in the Escambia River WMA.

Access: The property has frontage along Whirlpool Road, a county-maintained dirt road.

Future Land Use: Conservation. Future Land Use and Permitted Uses should be verified with the County Planning and Zoning Office.

Interest to be Retained by NFWMD: None






Subject Parcel:  
(115 acres)


Escambia River  
Water Management Area







 Subject Parcel:  
(115 acres)

 FEMA - 100 Year  
Floodplain: (8.32 acres / 7.2%)

### Escambia River Water Management Area

