

REVIEW TEAM MEETING MINUTES

NWFWMD UMBRELLA PLAN

TUESDAY, JANUARY 26, 2016

[FDOT District-3 Maintenance Office – Midway, FL]

| Attendees | |
|--------------------------------------|---------------------------------------|
| Randy Turner – USACE (Jacksonville) | Ted Hoehn – FWC (Tallahassee) |
| Brooke Hall – USACE (Jacksonville) | Bryan Phillips – FWC (Panama City) |
| Terry Wells – USACE (Panama City) | Terry Gilbert – FWC (Tallahassee) |
| Joy Swanson Pleas – FDOT (Chipley) | Paul Thorpe – NWFWMD (Midway) |
| Colby Cleveland – FDOT (Chipley) | David Clayton – NWFWMD (Midway) |
| Erica Collins – FDOT (Chipley) | Robert Lide – NWFWMD (Midway) |
| David Rydene – NMFS (St. Petersburg) | Janet Strutzel – NWFWMD (Tallahassee) |
| Mary Mittiga – USFWS (Panama City) | |

The Review Team (RT) meeting was held Tuesday, January 26, 2016 (10:30 AM – 12:00 PM EST) at the FDOT District-3 Midway Maintenance Office (17 Commerce Blvd. at the US 90 / I-10 interchange west of Tallahassee).

Operation of NWFWMD Mitigation Program

The meeting began with a brief review of the operation of the NWFWMD mitigation program, differences in federal/state aspects in application of the program, and consideration of potential improvements in FDOT/NWFWMD coordination (e.g., monthly e-mail updates; more frequent meetings between FDOT and NWFWMD staff).

Approximately 1/3 of the NWFWMD jurisdiction is covered by private mitigation bank service areas. NWFWMD and FDOT staff reiterated that the NWFWMD mitigation program (developed under section 373.4137, Florida Statutes) is utilized only when use of a private mitigation bank is not feasible.

NWFWMD In-Lieu Fee (ILF) Program

Since the last Review Team meeting (held 1/30/2015), the NWFWMD ILF Program Final Instrument has been approved by the USACE (approved 3/18/2015). The program is operating smoothly, and has a current, total available balance of 185.94 federal ILF credits, although the distribution of these credits varies widely by watershed.

For each ILF site, the status of restoration, management, and availability of credits was briefly discussed.

For the foreseeable future, the **Dutex ILF Mitigation Area** (Perdido Watershed) has ample credits available for anticipated FDOT needs (current balance of 41.67 federal credits / 41.51 state credits). Restoration efforts and monitoring continue per the USACE-approved management plan; prescribed fire is scheduled for this spring. Federal and state permit applications have been submitted for installation of a management access road on the eastern tract of Dutex. This planned gravel road will have a minimal footprint, will not alter existing hydrologic flow paths, will follow an existing firebreak along the northern boundary of the eastern tract, is necessary for restoration access, and will substantially increase protection of an adjacent residential subdivision during prescribed fires. There are no private mitigation banks in this watershed.

The **Yellow River Ranch ILF Mitigation Area** (Yellow River Basin of the Pensacola Bay System Watershed) has limited credit availability (currently 9.27 federal credits / 1.29 state credits). The most recent credit release (10.16 credits) was obtained in December, 2015. In January, 2016, 11.03 federal credits / 19.01 state credits were debited for impacts associated with SR 87 at Yellow River / FPID 220442-7. The next credit release is anticipated to be 5+ years out. There are no private mitigation banks in the Yellow River basin. If FDOT requires additional mitigation within this basin during the next few years, expansion of the existing Yellow River Ranch ILF site, or identification of other mitigation options, may need to be considered. Restoration and monitoring of the site, as required by existing permits, continues.

Because the **Lafayette Creek ILF Mitigation Area** (Choctawhatchee Watershed) service area is now largely covered by private mitigation bank service areas (excepting the Valparaiso/Niceville area in the western portion of the Choctawhatchee Bay watershed), it is anticipated that FDOT will have limited future need of credits from this site. Lafayette Creek has a current federal/state balance of 13.80 credits. Restoration and monitoring is continuing to be implemented as required by existing permits.

Live Oak Peninsula ILF Mitigation Area (Choctawhatchee Watershed) has no remaining credits available. Although this area is covered by private mitigation bank service areas, none have estuarine credits. Depending on anticipated FDOT needs and whether private banks in this area are able to develop estuarine credits, an expansion of the Live Oak project to generate additional estuarine credits may be considered. Monitoring continues as required by the federal ILF Final Instrument.

Ward Creek West ILF Mitigation Area (St. Andrew Bay Watershed) has a current federal/state balance of 58.09 credits. Restoration and monitoring continues as required by existing permits. Because the Ward Creek West service area is now covered by multiple, private mitigation banks, future FDOT use of this site is considered unlikely.

The **Tates Hell ILF Mitigation Area** (Apalachicola Watershed) has a current federal/state balance of 35.21 credits. There are no private banks in this area. Monitoring of Tate's Hell, as required by the federal ILF Final Instrument, continues. Ample credits are available for foreseen FDOT needs.

Shuler ILF Mitigation Area (Ochlockonee Watershed) has a current federal/state balance of 27.90 credits. There are no private banks in this area. Monitoring of Shuler, as required by the federal ILF Final Instrument, continues. Ample credits are available for foreseen FDOT needs.

FDOT Mitigation Needs in the upper Pensacola Bay Watershed (Escambia River and Blackwater River basins)

FDOT has several mitigation needs in the upper Escambia River and Blackwater River basins which do not have a private bank or ILF option. NFWFMD will investigate potential mitigation options on state-owned properties. If possible, combining mitigation for four FDOT impacts (SR 87 / FPID 416748-6; SR 87 / FPID 416748-2—partially within a private mitigation bank; SR 4 / FPID 432828-1; CR 99 / FPID 430466-1) will be considered.

- **SR 87 (from CR 178 to SR 4; FPID 416748-6)**
Located in the upper Blackwater River basin of the Pensacola Bay System watershed, there is no private mitigation bank or ILF option available. A 2.71-acre impact, NFWFMD will investigate potential mitigation options on state-owned properties within the Blackwater River basin. If feasible, mitigation for several FDOT impacts in this region that lack a mitigation bank or ILF option may be combined into one project.
- **SR 4 Blackwater River Bridge (FPID 432828-1)**
Located in the upper Blackwater River basin of the Pensacola Bay System watershed, there is no private mitigation bank or ILF option available. Estimated by FDOT as a 2.05-acre impact, NFWFMD will investigate potential mitigation options on state-owned properties within the Blackwater River basin. If feasible, mitigation for several FDOT impacts in this region that lack a mitigation bank or ILF option may be combined into one project.
- **CR 99 Pine Barren Creek River Bridge (FPID 430466-1)**
A 1.23-acre impact in the upper Escambia River basin of the Pensacola Bay System watershed, there is no private mitigation bank or ILF option available. NFWFMD will investigate potential mitigation options on state-owned properties. If acceptable to permittees, mitigation for several FDOT impacts in this region that lack a mitigation bank or ILF option may be combined into one project.

- **SR 87 (from end of Four-Lane section to south of Cold Water Creek; FPID 416748-2)**

Located in the upper Blackwater River basin of the Pensacola Bay System watershed, this estimated 10.89-acre impact is partially within the service area of the Pensacola Bay Mitigation Bank (PBMB). There are no ILF options. If use of the PBMB for those impacts outside the PBMB service area is not allowed by permittees, the NFWWMD will investigate potential mitigation options on state-owned lands within the Blackwater River basin. If feasible, mitigation for several FDOT impacts in this region that lack a mitigation bank or ILF option may be combined into one project.

SR 300 Multiuse Path at Eastpoint (FPID 433568-1)

Presented as an FYI item. A 0.26-acre impact in the Apalachicola Bay watershed at Eastpoint, a USACE permit has been issued with mitigation consisting of hydrologic enhancement to sawgrass marsh wetlands via construction of one low-water-crossing at St. Joseph Bay State Buffer Preserve (Southgate Project). No mitigation was required by state permits. There were no private bank or ILF options available for this impact. NFWWMD is ready to move forward with implementation of mitigation when funds are received from FDOT.

US 98 (from Emerald Bay Drive to Tang-O-Mar Drive; FPID 414132-4)

Located in the Choctawhatchee Bay watershed, mitigation is anticipated to consist of FDOT purchase of credits from a private mitigation bank.

Patricia Drive at Bayou Marcus Creek (FPID 430472-1)

A 1.13-acre impact in the Perdido River watershed near Pensacola, mitigation is expected to consist of credits from the Dutex ILF Mitigation Area (ample credits are available). The impact is not within the service area of any private mitigation bank.

CR 159 Attapulugus Creek Bridge (FPID 428624-1)

Located in the upper Ochlockonee River watershed, mitigation for this 0.82-acre impact is expected to consist of credits from the Shuler ILF Mitigation Area (ample credits are available). The impact is not within the service area of any private mitigation bank.

US 98 Pensacola Bay Bridge (FPID 409334-1)

Listed on the FDOT Inventory/Escrow Report as an estimated 0.25-acre impact, it is now believed that actual impacts will be somewhat less and may be *de minimis*. If mitigation is required, and if acceptable to permittees, mitigation is expected to consist of FDOT purchase of

credits from a private mitigation bank. However, because the impacts are to estuarine wetlands, permittees may or may not allow use of out-of-kind credits from a mitigation bank (estuarine credits are not available). Only if FDOT is unable to use a private mitigation bank would NFWFMD develop mitigation to offset estuarine impacts associated with this project. If NFWFMD does pursue mitigation for this impact, Review Team members suggested investigating possible options at Escribano Point.

Carrabelle-Thompson Airport (FPID 420730-1)

Located in the Apalachicola watershed near Carrabelle, mitigation is no longer required for this impact.

Ochlockonee Bay Trail, Phase 2 (FPID 416272-1)

Located adjacent to Ochlockonee Bay, mitigation is anticipated to consist of credits from the Shuler ILF site. No private mitigation bank service area covers this impact. FDOT will keep NFWFMD informed on status of USACE permitting (no mitigation required by state permits).

Ochlockonee Bay Trail, Phase 3 (FPID 416272-3)

This is a Wakulla County project. Located adjacent to Ochlockonee Bay, this project is apparently complete and no mitigation was required (FDOT will verify). No private mitigation bank service area covers this project site.

US 90A (from CR 99 to I-10; FPID 218605-6)

An estimated 1.00-acre impact located in the Perdido watershed, no private mitigation bank option is available. Mitigation, if necessary, is anticipated to consist of credits from the Dutex ILF site (ample credits available).

US 90A (from I-10 to SR 297; FPID 218605-7)

Another estimated 1.00-acre impact located in the Perdido watershed, no private mitigation bank option is available. Mitigation, if necessary, is anticipated to consist of credits from the Dutex ILF site (ample credits available).

US 90A (from SR 297 to US 29; FPID 218605-3)

No mitigation required for this road project; has been dropped from FDOT Escrow/Inventory.

SR 4 (P.J. Adams Pkwy. From Ashley Drive to Key Lime Place; FPID 421997-7)

An estimated 0.68-acre impact in Crestview (Yellow River basin), this is an Okaloosa County project (no funds will be provided from FDOT). There are no private mitigation bank options in this area. If Okaloosa County requires mitigation, mitigation may consist of credits from the Yellow River Ranch ILF site (1.29 state credits / 9.27 federal credits available). FDOT may act as a liaison between NFWFMD and Okaloosa County.

US 98 (from Carrabelle Beach Park to CR 279; FPID 425740-2)

This is a proposed multiuse path in Carrabelle adjacent to US 98 (Apalachicola watershed). Estimated impact is to 1.19 acres. There are no private mitigation bank options; the impact is also outside the service area of the Tate's Hell ILF project. If mitigation is required for this impact, NFWFMD may have to develop new mitigation. FDOT is not currently moving forward with this project.

SR 79 (from Holmes/Washington County Line to I-10; FPID 220773-3)

Presented as an FYI item, mitigation for this impact (located in the Choctawhatchee watershed), as requested by FDOT, has been implemented at the Sand Hill Lakes Mitigation Bank via debiting of 1.52 federal credits (no mitigation required by state permits). NFWFMD received mitigation funds from FDOT for this impact in June, 2010 (at that time, there were no private mitigation bank options in the area).

SR 79 (from Reedy Branch to Court Street; FPID 220773-6)

As requested by FDOT to avoid potential project delays, mitigation for this impact (located in the Choctawhatchee watershed) is anticipated to consist of credits from the Sand Hill Lakes Mitigation Bank. NFWFMD received mitigation funds from FDOT for this impact in June, 2011 (at that time, there were no private mitigation bank options in the area). NFWFMD will proceed with credit debits when permits are issued.

SR 77 (from Bay/Washington County Line to CR 279; FPID 217909-3)

To avoid potential project delays, FDOT has requested that any mitigation required by permits for this impact (located in the Choctawhatchee watershed) consist of credits from the Sand Hill Lakes Mitigation Bank. NFWFMD received mitigation funds from FDOT for this impact in June, 2011. NFWFMD will proceed with credit debits when permits are issued.

Gulf to Bay, Segment 2 (FPID 410911-2)

This impact is not currently in the service area of any private mitigation bank, although a private bank under development may eventually include this area. NFWFMD received mitigation funds from FDOT in June, 2011. FDOT anticipates near-term moving forward with permitting. To avoid potential project delays, FDOT prefers that NFWFMD keep funds already provided in

place and develop mitigation. NFWMD will investigate options in the St. Joseph Bay watershed.

Meeting PowerPoint Attached

FDOT District-3 Mitigation Review Team Meeting

26 January 2016

(FDOT Midway Operations Center)



**US Army Corps
of Engineers®**



Discussion Items

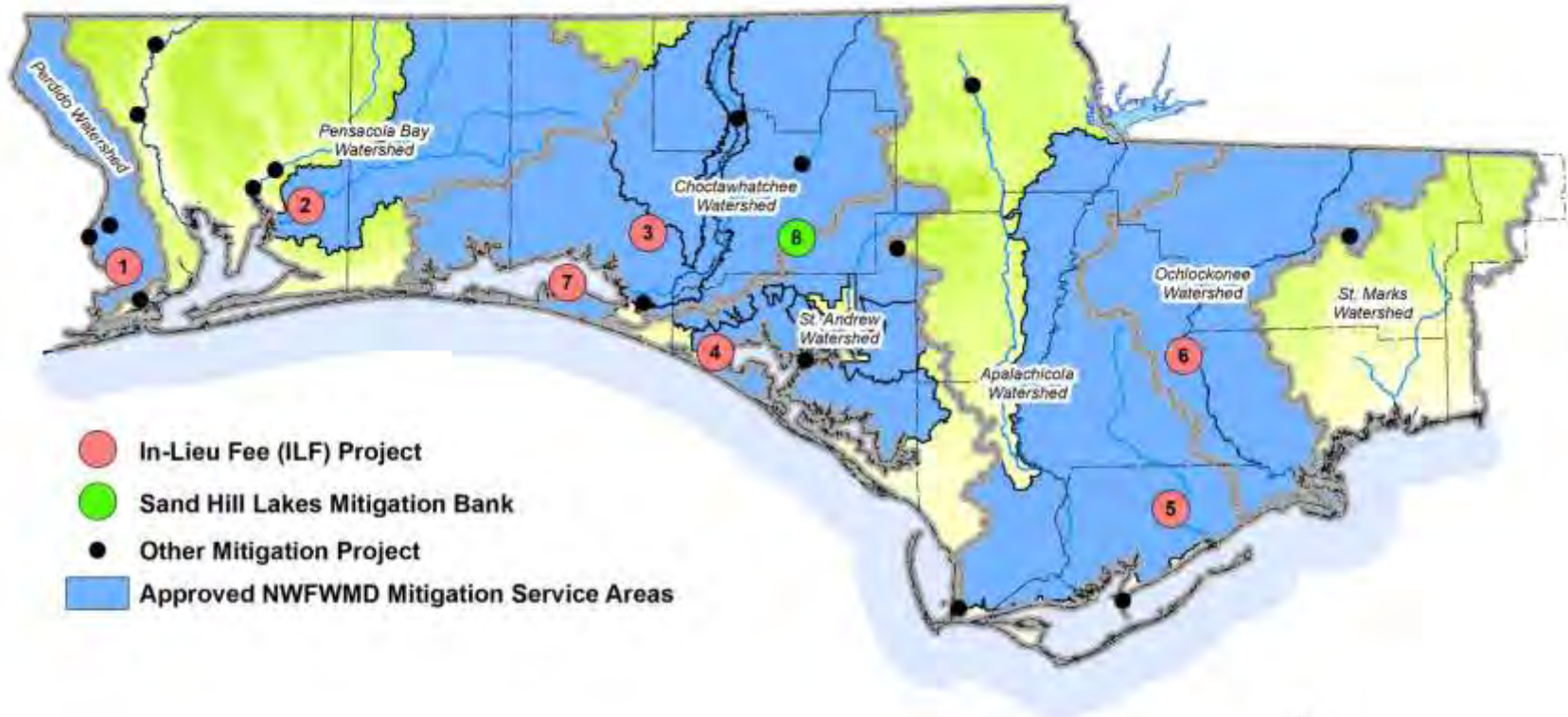
- NWFWMMD mitigation program operation.
- Upcoming FDOT mitigation needs.
- Restoration updates at existing NWFWMMD mitigation sites.
- Other business or concerns.

Status of In-Lieu Fee Program and Umbrella Plan

- Final ILF Instrument approved by USACE 3/18/2015; program is operating smoothly; current balance of 185.94 federal ILF credits available for immediate use. ILF and mitigation bank service areas, combined, cover ~78% of the NWWFMD jurisdiction.
- Non-federal Umbrella Plan (consisting of the ILF projects, SHLMB, and non-ILF projects) continues to function for state permit requirements.
- Improved functioning of NWWFMD mitigation program.



NFWWMD Mitigation Program



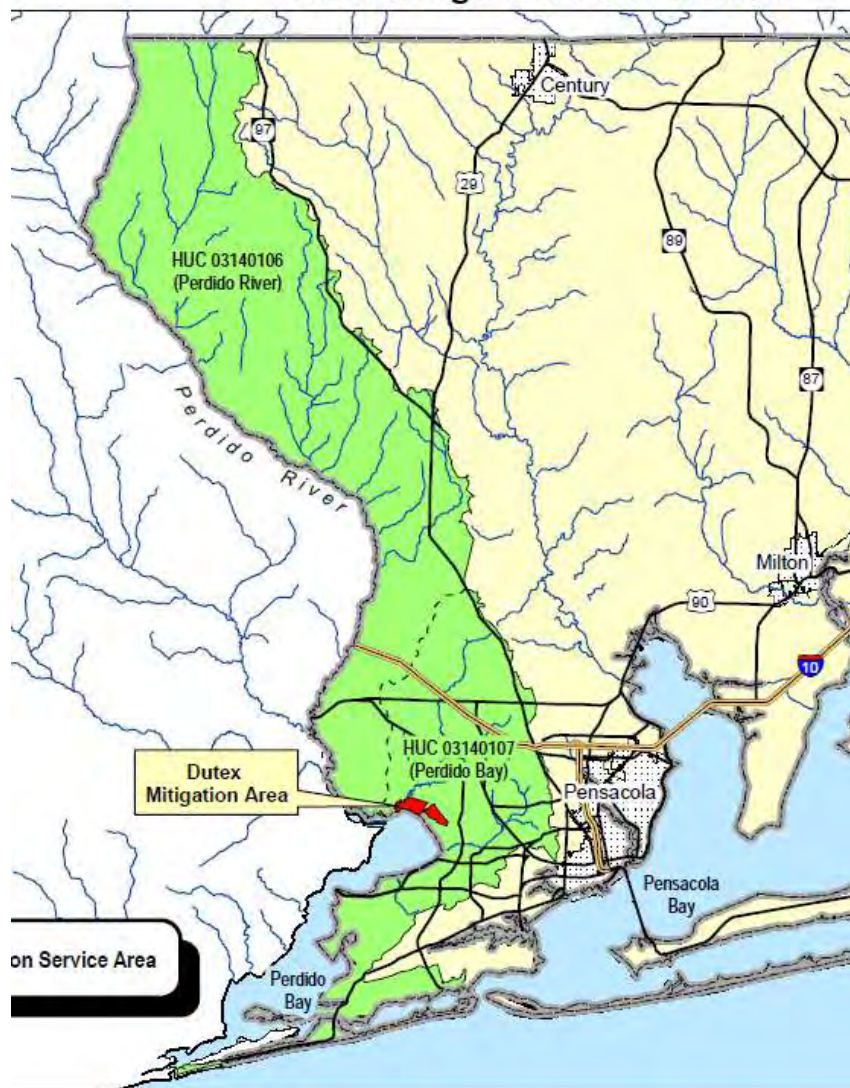
- In-Lieu Fee (ILF) Project
- Sand Hill Lakes Mitigation Bank
- Other Mitigation Project
- Approved NFWWMD Mitigation Service Areas

| | | |
|------------------------------|---------------------|-------------------------|
| 1 - Dutex (ILF) | 21.79 Credits Used | 41.51 Credits Available |
| 2 - Yellow River Ranch (ILF) | 21.41 Credits Used | 1.29 Credits Available |
| 3 - Lafayette Creek (ILF) | 15.67 Credits Used | 13.80 Credits Available |
| 4 - Ward Creek West (ILF) | 44.68 Credits Used | 58.09 Credits Available |
| 5 - Tates Hell (ILF) | 0.81 Credits Used | 35.35 Credits Available |
| 6 - Shuler (ILF) | 6.05 Credits Used | 27.90 Credits Available |
| 7 - Live Oak Peninsula (ILF) | 3.98 Credits Used | 0.00 Credits Available |
| 8 - Sand Hill Lakes (Bank) | 111.25 Credits Used | 73.38 Credits Available |



Dutex ILF Mitigation Area

Dutex Mitigation Service Area

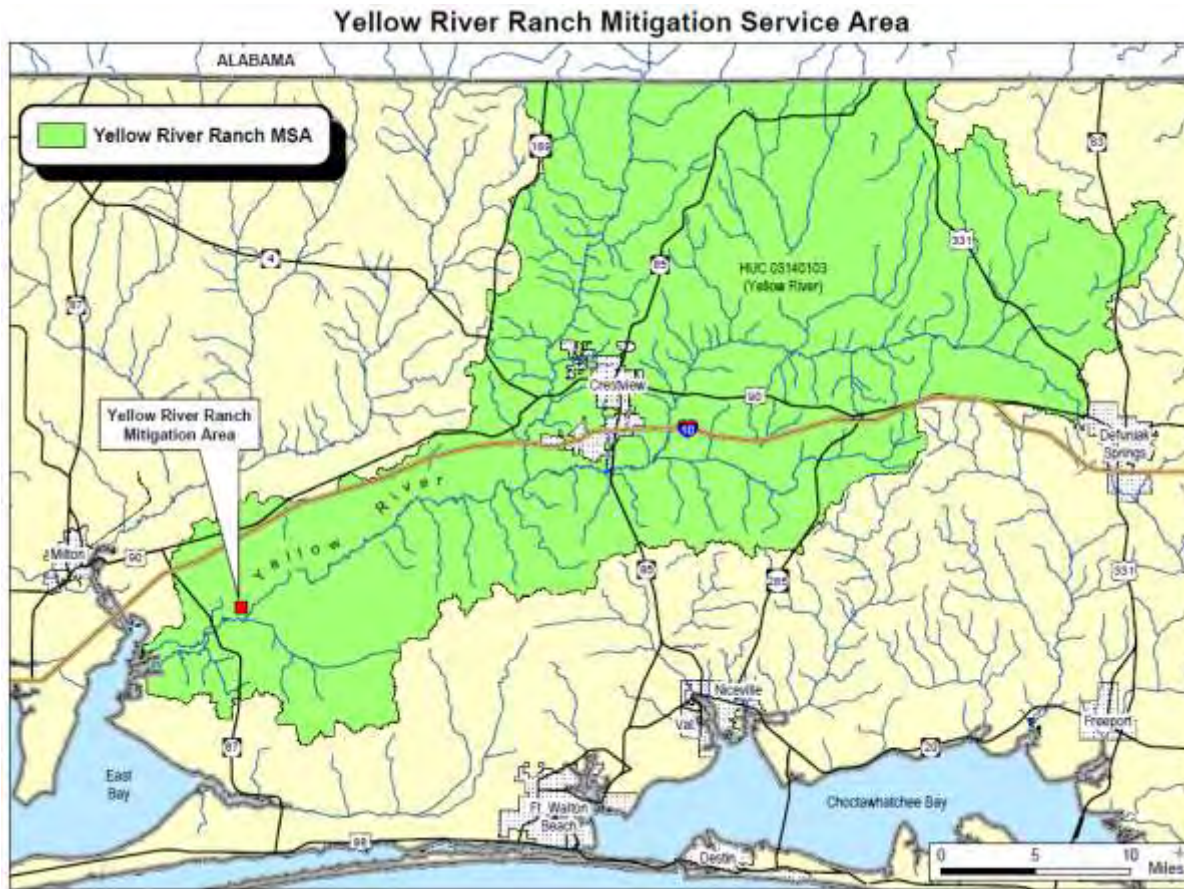


Total Potential Credits = 107.16

- Estuarine Emergent
 - 10.15 (Potential)
 - 6.00 (Released)
 - 0.00 (Debited)
 - 6.00 (Balance)
- Palustrine Emergent
 - 7.58 (Potential)
 - 4.48 (Released)
 - 0.00 (Debited)
 - 4.48 (Balance)
- Palustrine Scrub/Shrub
 - 0.52 (Potential)
 - 0.31 (Released)
 - 0.00 (Debited)
 - 0.31 (Balance)
- Palustrine Forested
 - 88.90 (Potential)
 - 52.51 (Released)
 - 21.63 (Debited)
 - 30.88 (Balance)

Note--these credits totals are subject to minimal adjustment resulting from use of an updated project boundary. Current total available credit balance is 41.67. No private banks exist or are known to be under development in the Perdido watershed.

Yellow River Ranch ILF Mitigation Area



Total Potential Credits = 33.88

- Palustrine Emergent
 - 11.89 (Potential)
 - 7.96 (Released)
 - 7.96 (Debited)
 - 0.00 (Balance)
- Palustrine Forested
 - 21.99 (Potential)
 - 14.74 (Released)
 - 5.47 (Debited)
 - 9.27 (1.29 State Balance)

No additional credit releases anticipated for 5+ years. Federal/State credit balance difference results from a federal requirement of 11.03 credits and a state requirement of 19.01 credits for SR 87 at Yellow River Bridge. No private mitigation bank options in this area.

Lafayette Creek ILF Mitigation Area

Lafayette Creek Mitigation Service Area



Total Potential Credits = 50.30

Palustrine Forested

- 50.30 (Potential)
- 29.47 (Released)
- 15.67 (Debited)
- 13.80 (Balance)

Majority of service area is covered by private mitigation banks.

Live Oak ILF Mitigation Area



Total Potential Credits = 3.98

Palustrine Forested

- 2.66 (Potential)
- 2.66 (Released)
- 2.66 (Debited)
- 0.00 (Balance)

Estuarine Emergent

- 2.66 (Potential)
- 2.66 (Released)
- 2.66 (Debited)
- 0.00 (Balance)

No private banks in this area have estuarine credits. Consideration of expansion of Live Oak project to generate additional estuarine credits?

Ward Creek West ILF Mitigation Area

Ward Creek West Mitigation Service Area



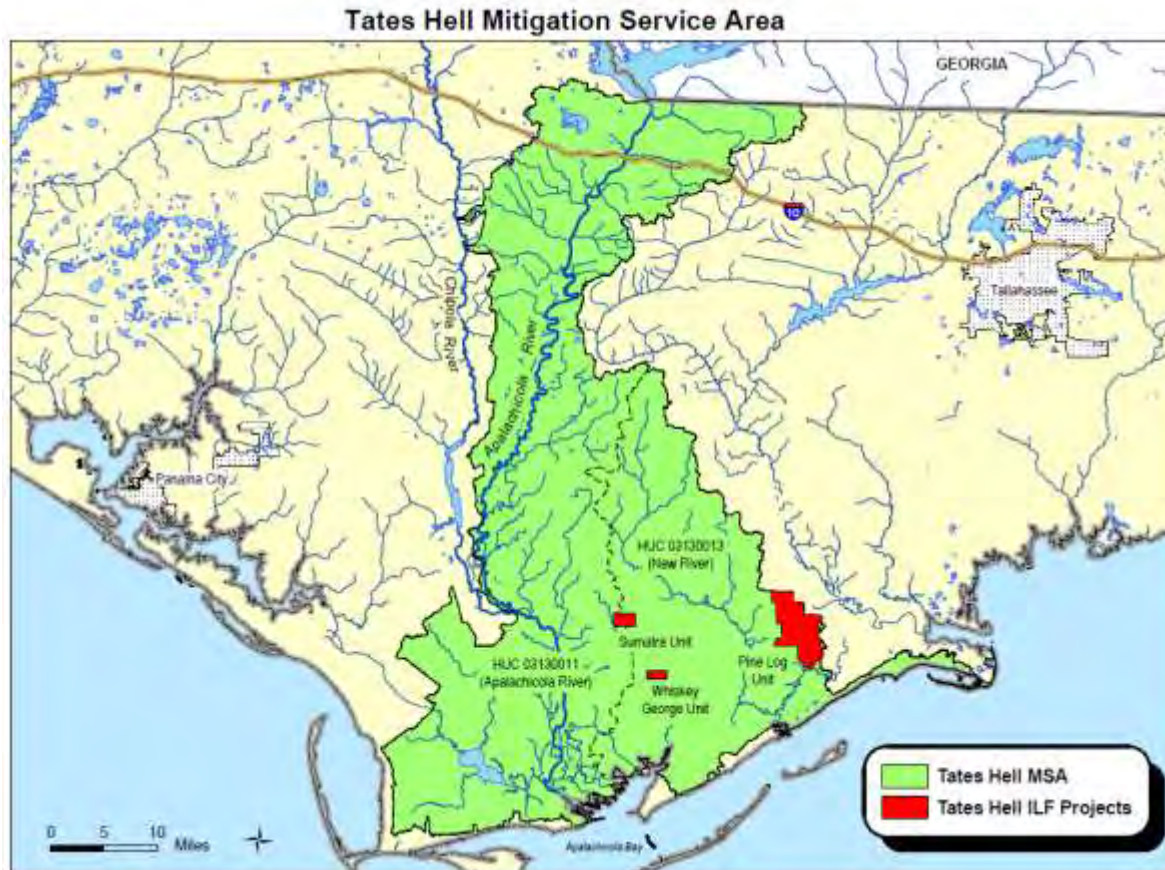
Total Potential Credits = 173.76

Palustrine Forested

- 173.76 (Potential)
- 102.77 (Released)
- 44.68 (Debited)
- 58.09 (Balance)

Multiple private mitigation banks in area. NFWMD does not compete with private banks.

Tates Hell ILF Mitigation Area



Total Potential Credits =
50.30

Palustrine Emergent

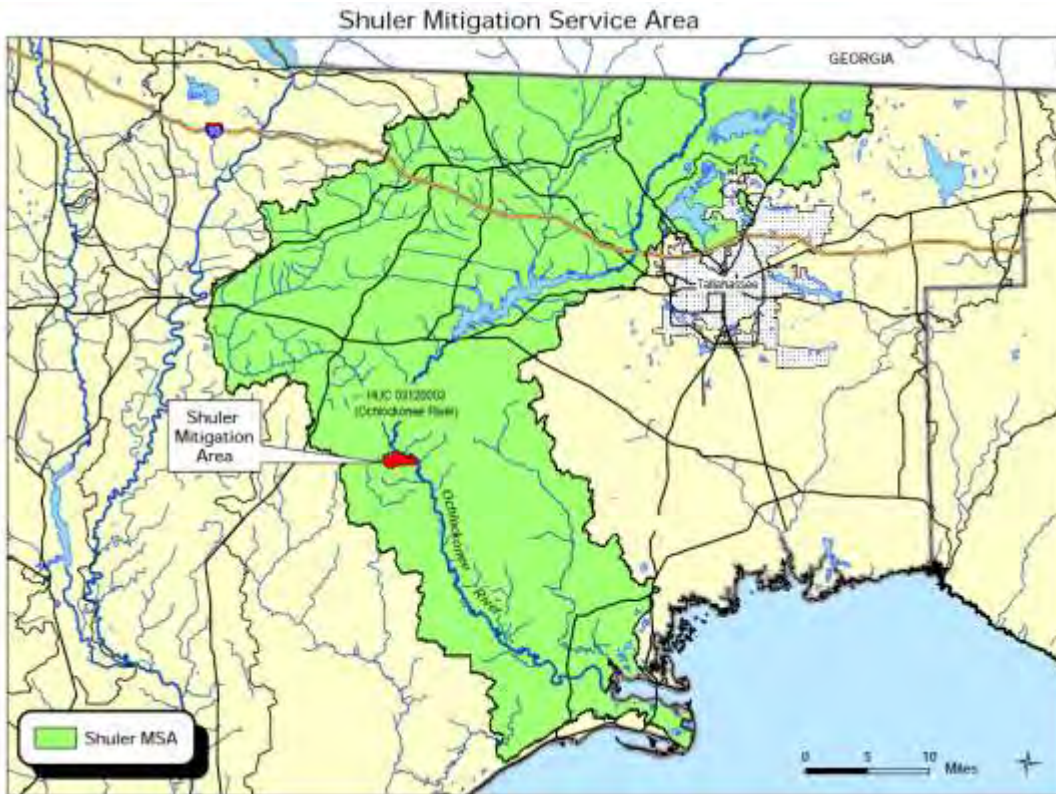
- 8.12 (Potential)
- 8.12 (Released)
- 0.00 (Debited)
- 8.12 (Balance)

Palustrine Forested

- 30.40 (Potential)
- 28.04 (Released)
- 0.95 (Debited)
- 27.09 (Balance)

No private bank options
available in this area.

Shuler ILF Mitigation Area



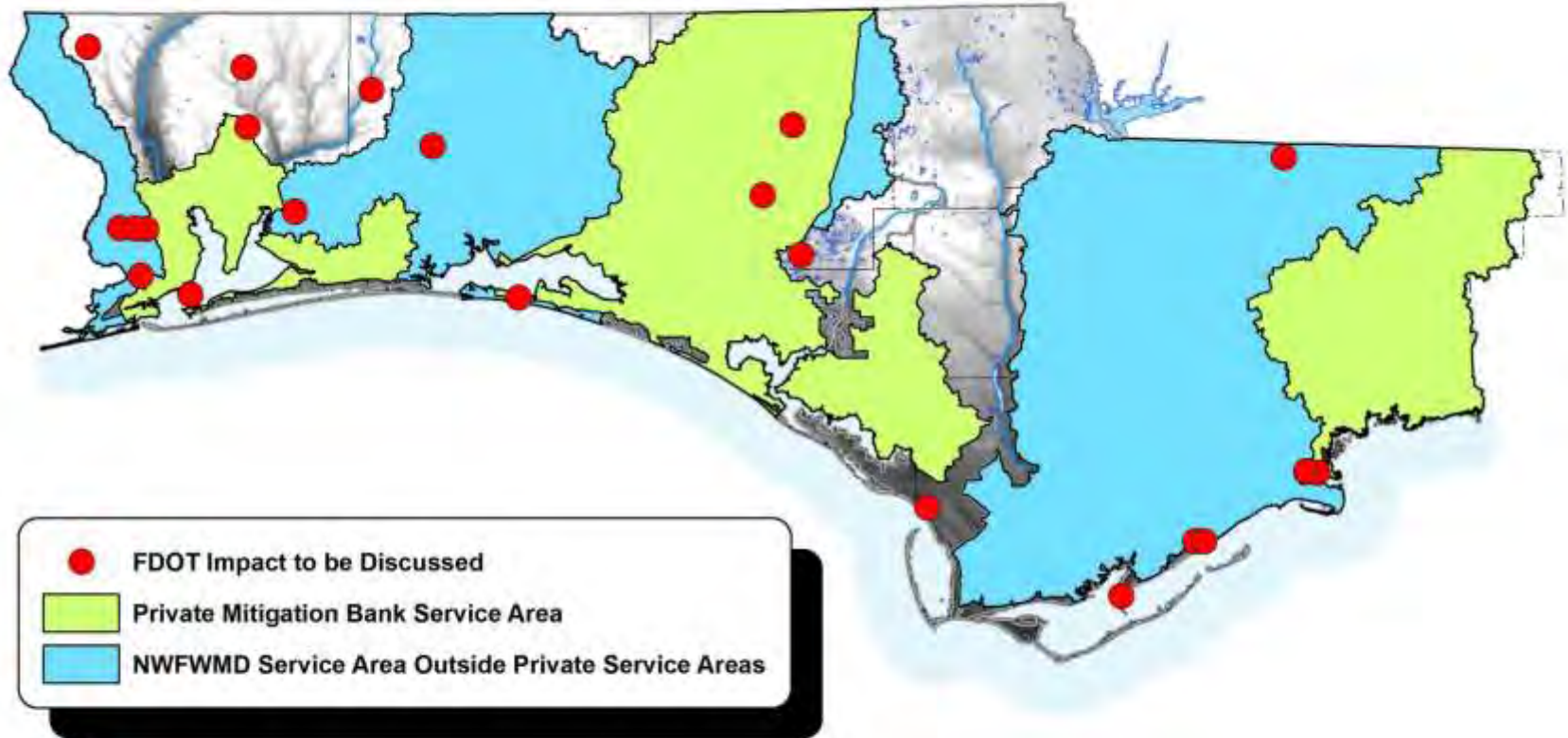
Total Potential Credits =
50.30

Palustrine Forested

- 33.95 (Potential)
- 33.95 (Released)
- 6.05 (Debited)
- 27.90 (Balance)

No private mitigation bank
options available in this
area.

FDOT Impacts to be Discussed



FDOT Mitigation Need

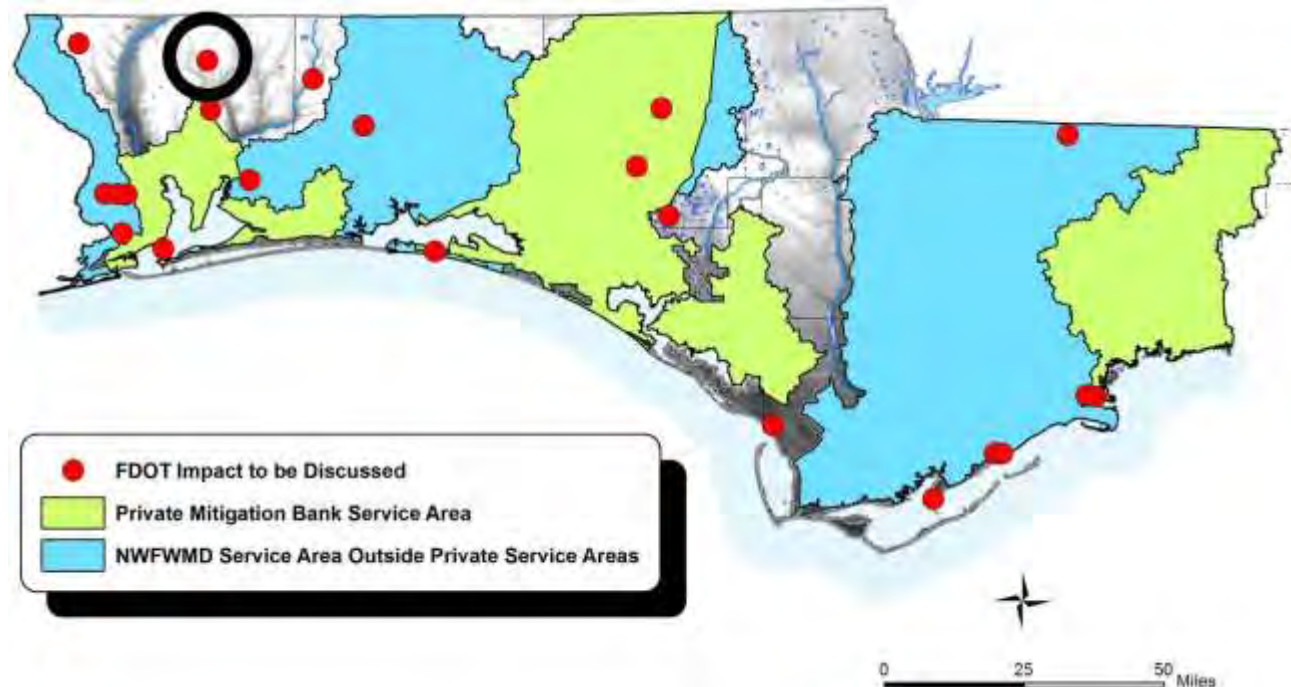
SR 300 Multiuse Path at Eastpoint (FPID 433568-1).

Apalachicola watershed. No ILF or mitigation bank option. 0.26 acres; year to permit = 2016; year WPA funded = 2016. Proposed mitigation is hydrologic enhancement at St. Joseph Bay State Buffer Preserve (Southgate Project); USACE permit has been issued. Included in draft 2016 Regional Mitigation Plan (RMP) Update to FDEP. Construction start 10/15/2017. NFWMD is ready to move forward with mitigation when funds are received from FDOT.



FDOT Mitigation Need

SR 87 (from CR 178 to SR 4; FPID 416748-6). Pensacola Bay (Blackwater River) watershed. No ILF or mitigation bank option. 2.71 acres; year to permit = TBD; year WPA funded = TDB. No potential mitigation options have been identified at this time. Construction start TBD. Included in draft 2016 RMP Update to FDEP.



FDOT Mitigation Need

SR 87 (from end of 4-land section to south of Cold Water Creek; FPID 416748-2). Pensacola Bay (Blackwater River) watershed. Partially within Pensacola Bay Mitigation Bank (PBMB) service area. No ILF mitigation option. 10.89 acres (7.25 functional loss); year to permit = TBD; year WPA funded = TBD. If use of PBMB for those impacts outside the PBMB service area is not allowed by permittees, new potential mitigation options will have to be identified. Construction start TBD. Included in draft 2016 RMP Update to FDEP.



FDOT Mitigation Need

US 98 (from Emerald Bay Drive to Tang-O-Mar Drive; FPID 414132-4). Choctawhatchee Bay watershed. 4.19 acres; year to permit = 2016; year WPA funded = 2016. Expected to be mitigated at Nokuse Plantation Mitigation Bank. However, a consultant for FDOT contacted NFWFMD about purchase of credits from Lafayette Creek ILF to cover a credit shortfall at Nokuse. NFWFMD would provide credits from Lafayette Creek only if Nokuse was unable to cover the mitigation need on a timeframe acceptable to permitters. Construction 11/20/2016.



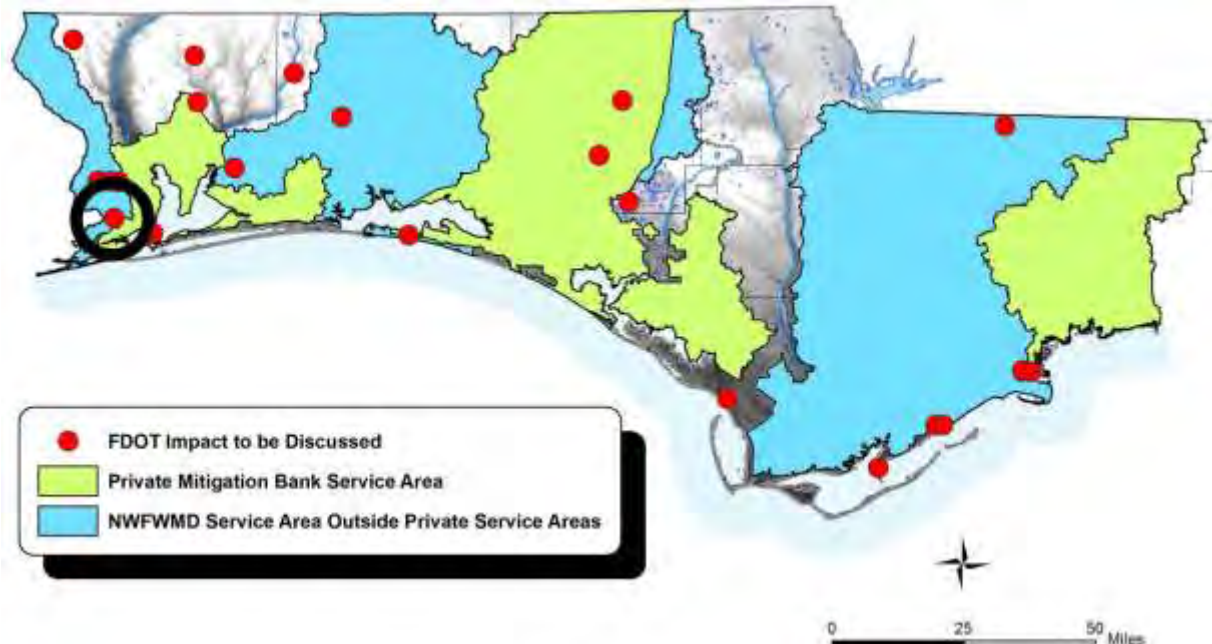
FDOT Mitigation Need

Patricia Drive at Bayou Marcus Creek (FPID 430472-1).

Perdido watershed. No private mitigation bank option. 1.125 acres; year to permit = 2016; year WPA funded = TDB.

Potential mitigation is Dutex ILF (ample credits available).

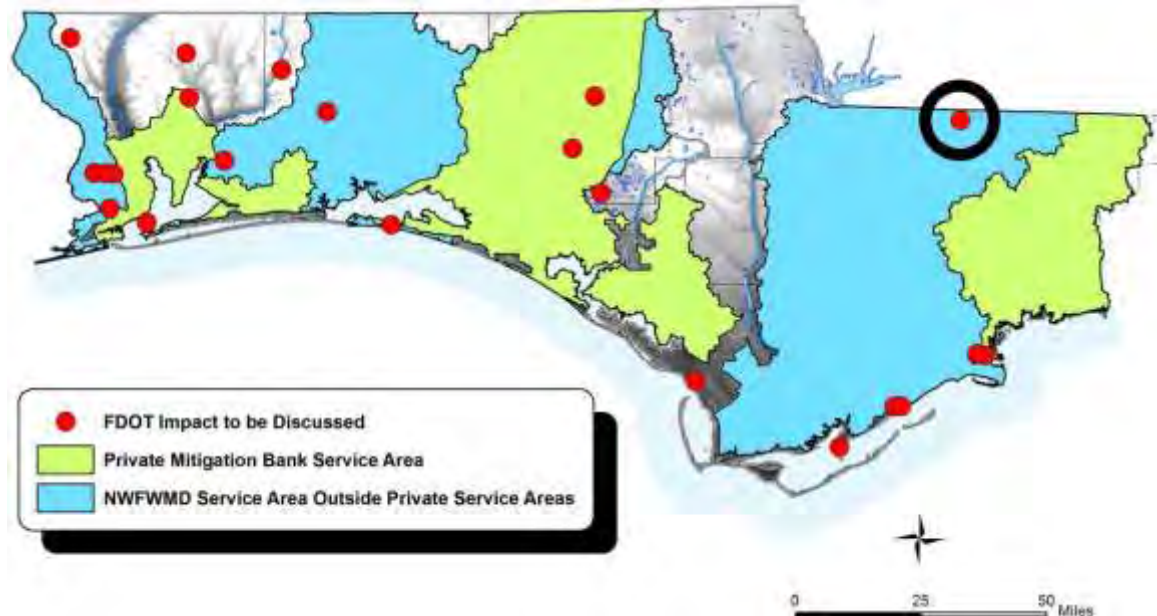
Construction start 1/15/2017. Included in draft 2016 RMP Update to FDEP.



FDOT Mitigation Need

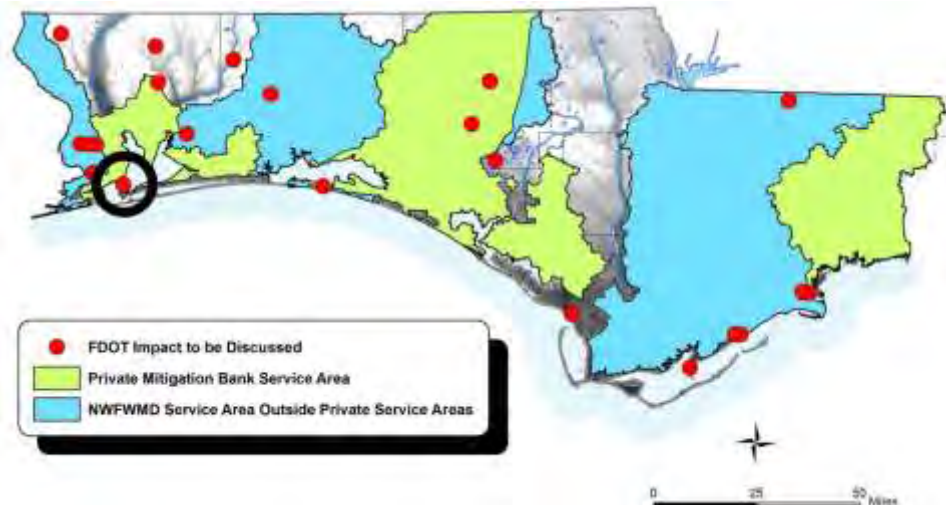
CR 159 Attapulgus Creek Bridge (FPID 428624-1).

Ochlockonee watershed. No private mitigation bank option. 0.82 acres; year to permit = 2016; year WPA funded = TDB. Potential mitigation is Shuler ILF (ample credits available). Construction start 9/9/2018. Included in draft 2016 RMP Update to FDEP.



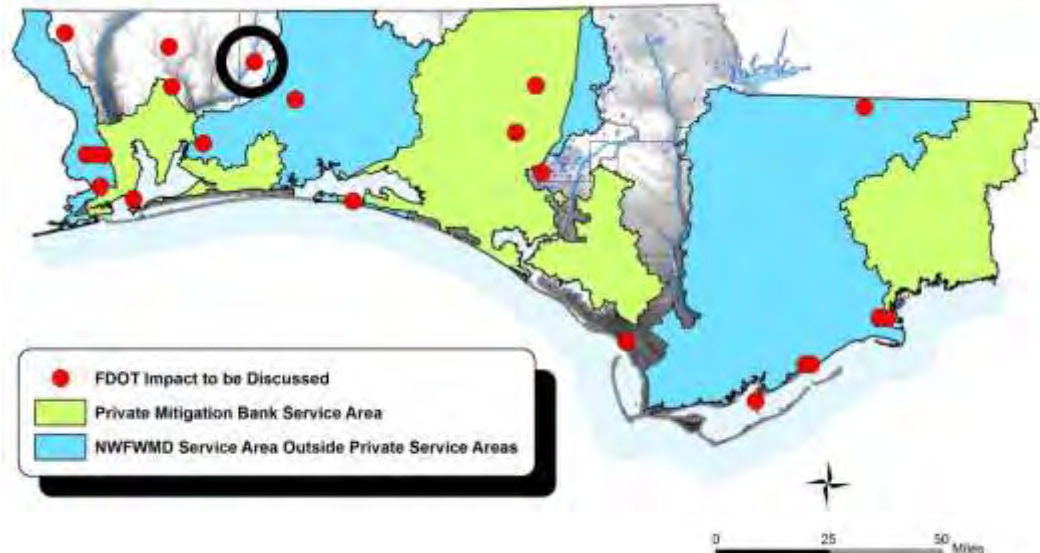
FDOT Mitigation Need

US 98 Pensacola Bay Bridge (FPID 409334-1). Pensacola Bay watershed. 0.25 acres; year to permit = 2017; year WPA funded = 2017. Mitigation not expected due to minimal impacts to estuarine wetlands. If mitigation is needed, anticipated use of either Pensacola Bay Mitigation Bank or Garcon Peninsula Mitigation Bank. However, estuarine credits are not available at either of these banks. NWFWMMD would develop mitigation for this impact only if use of a private bank is not acceptable to permitters. Construction start TBD.



FDOT Mitigation Need

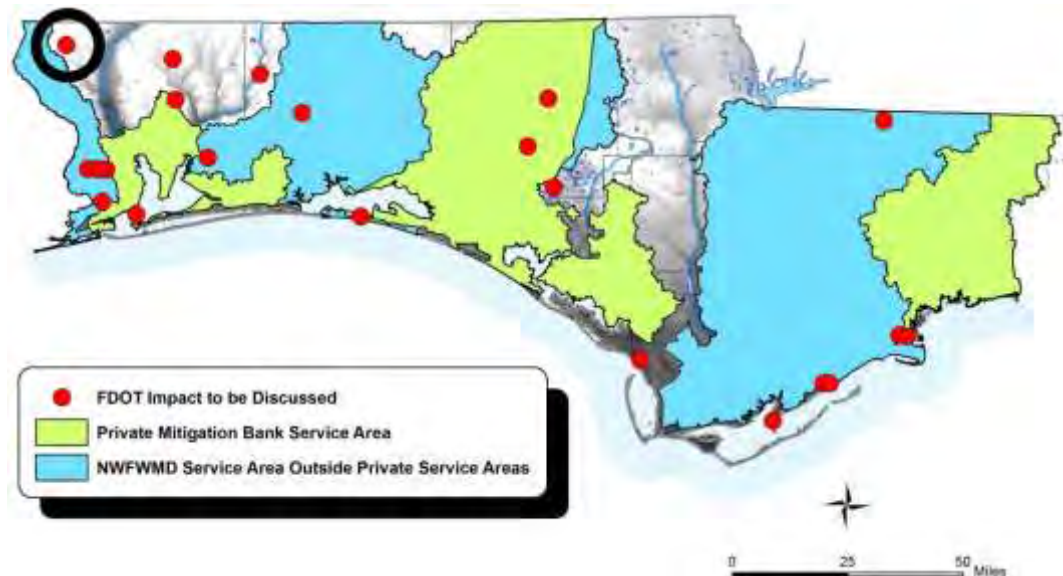
SR 4 Blackwater River Bridge (FPID 432828-1). Pensacola Bay (Blackwater River) watershed. No private mitigation bank or ILF option. ~~5.05~~^{2.05} acres; year to permit = 2016; year WPA funded = 2018. No potential mitigation options have been identified at this time. Construction start 2/24/2019. Included in draft 2016 RMP Update to FDEP Potential mitigation.



FDOT Mitigation Need

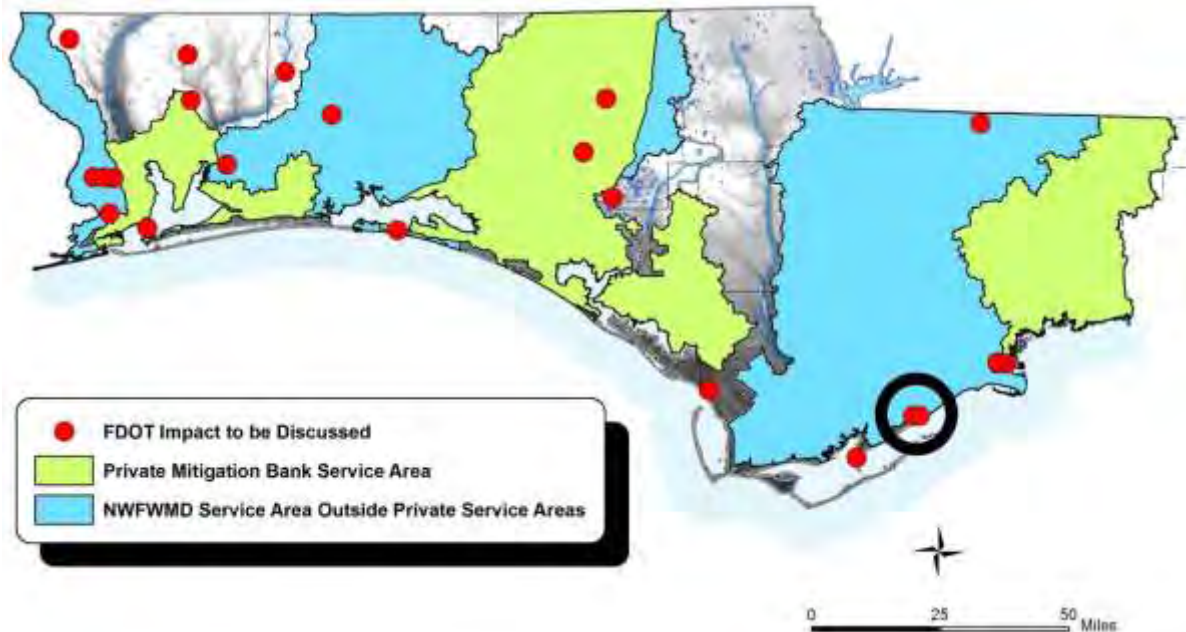
CR 99 Pine Barren Creek Bridge (FPID 430466-1).

Pensacola Bay (Blackwater River) watershed. No private mitigation bank or ILF option. 1.23 acres; year to permit = 2016; year WPA funded = 2016. No potential mitigation options have been identified at this time. Construction start 2/26/2017. Included in draft 2016 RMP Update to FDEP Potential mitigation.



FDOT Mitigation Need

Carrabelle-Thompson Airport (FPID 420730-1). Apalachicola watershed. Included in 2015 RMP Update to FDEP with mitigation to Tates Hell ILF, although mitigation is no longer required.



FDOT Mitigation Need

Ochlockonee Bay Trail, Phase 2 (FPID 416272-1).

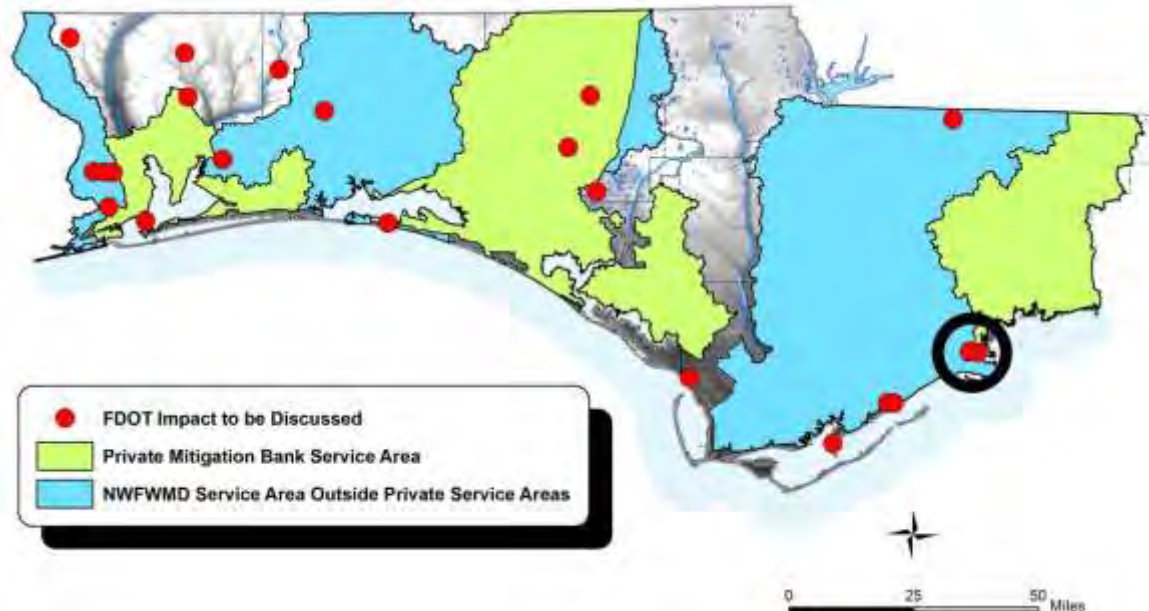
Ochlockonee watershed. No private mitigation bank option. 0.50 acres; year to permit = 2016; year WPA funded = 2014. Potential mitigation is use of Shuler ILF (ample credits available). Included in 2015 RMP Update to FDEP. Mitigation funds (\$54,800) received from FDOT in June, 2014. No mitigation required by ERP permit. Will USACE permit require mitigation?



FDOT Mitigation Need

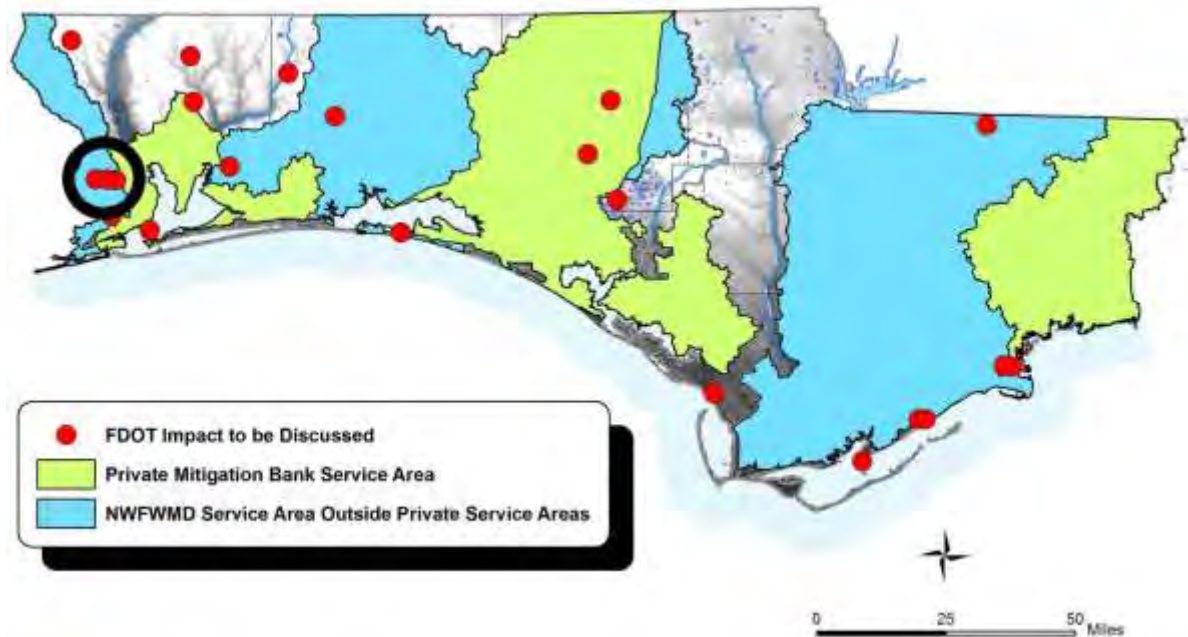
Ochlockonee Bay Trail, Phase 3 (FPID 416272-3).

Ochlockonee watershed. 0.046 acres. A Wakulla County project, it is apparently complete and no mitigation was required. Potential use of Shuler ILF was approved in 2015 RMP Update to FDEP.



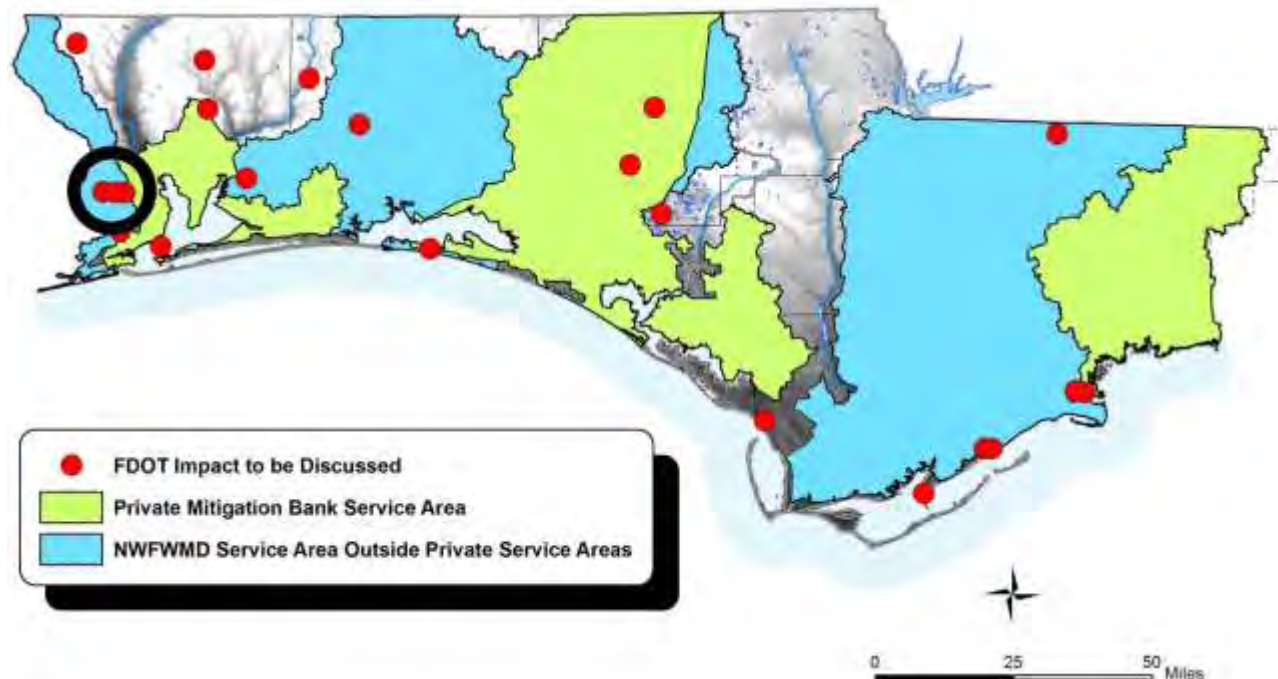
FDOT Mitigation Need

US 90A (from CR 99 to I-10; FPID 218605-6). Perdido watershed. No private mitigation bank option. 1.00 acres; year to permit = 2016; year WPA funded = 2016. Potential mitigation is Dutex ILF (ample credits available). Design build letting 1/29/2016. Included in 2015 RMP Update to FDEP. Mitigation may be moved to FY 2017.



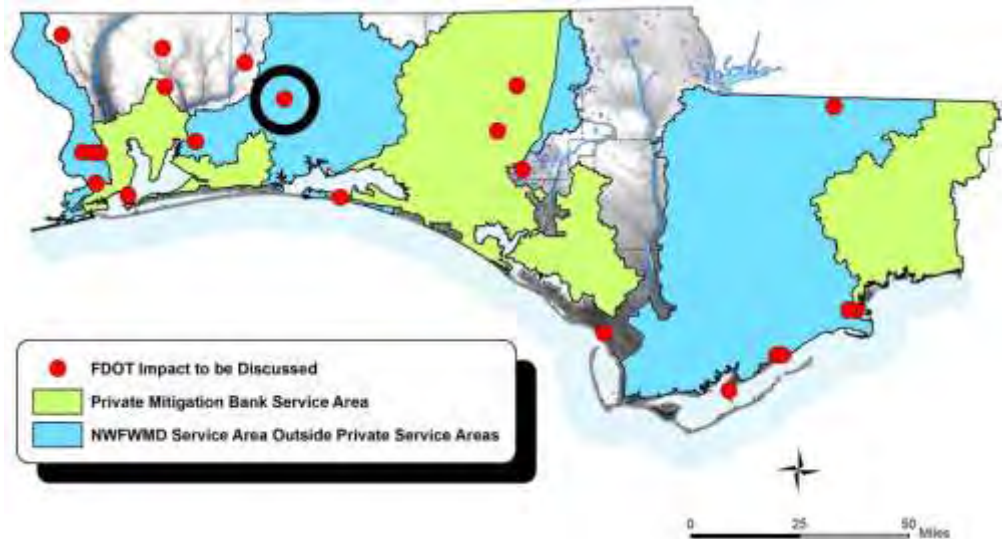
FDOT Mitigation Need

US 90A (from I-10 to SR 297; FPID 218605-7). Perdido watershed. No private mitigation bank option. 1.00 acres; year to permit = TBD; year WPA funded = 2016. Potential mitigation is Dutex ILF (ample credits available). Design build letting 1/29/2016. Included in draft 2016 RMP Update to FDEP. Mitigation may be moved to FY 2017.



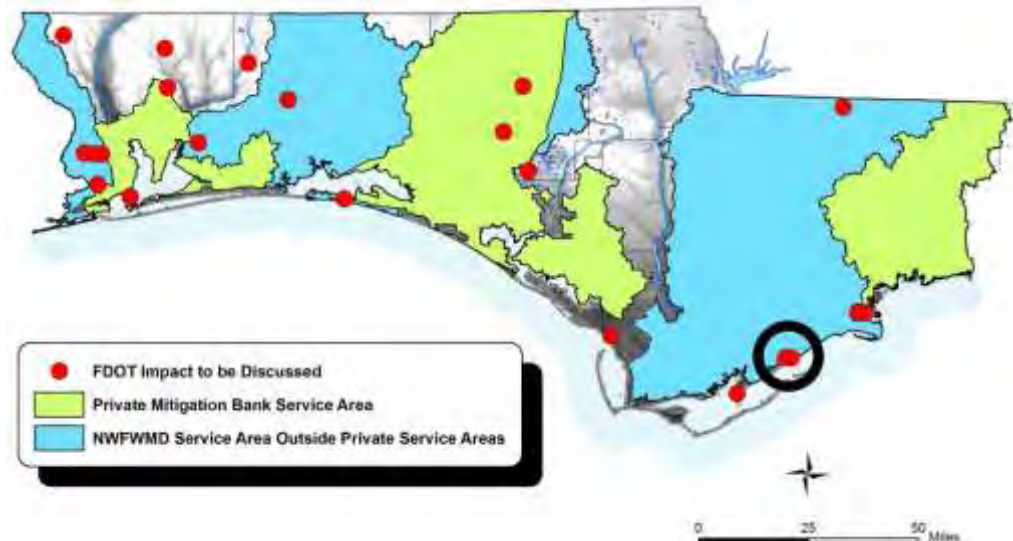
FDOT Mitigation Need

SR 4 (P.J. Adams Pkwy. from Ashley Drive to Key Lime Place; FPID 421997-7). Pensacola Bay (Yellow River) watershed. No private mitigation bank option. 0.68 acres; year to permit = TBD; year WPA funded = 2016. Potential mitigation is Yellow River Ranch ILF (warning—only 1.29 state / 9.27 federal are available at Yellow River Ranch). Included in 2015 RMP Update to FDEP. This is an Okaloosa County project.



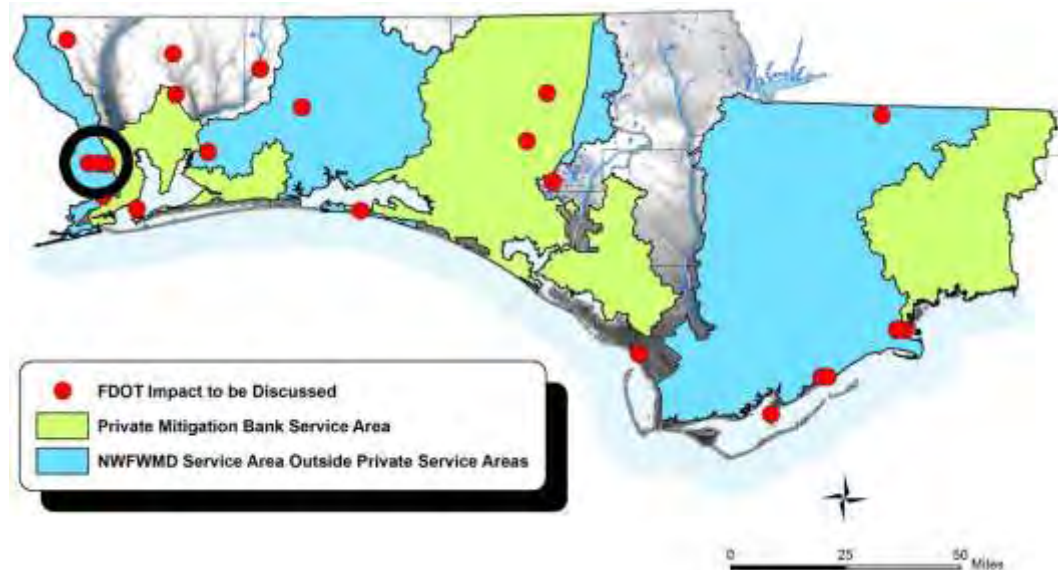
FDOT Mitigation Need

US 98 (from Carrabelle Beach Park to CR 379; FPID 425740-2). Apalachicola watershed. No private mitigation bank option and not within the Tates Hell ILF service area. 1.192 acres; year to permit = TBD; year WPA funded = 2019. Potential mitigation TBD. Included in 2014 RMP Update to FDEP with potential mitigation at Tates Hell ILF (although later review indicated the impact was just outside the Tates Hell ILF service area). Mitigation funds no longer programmed for 2019.



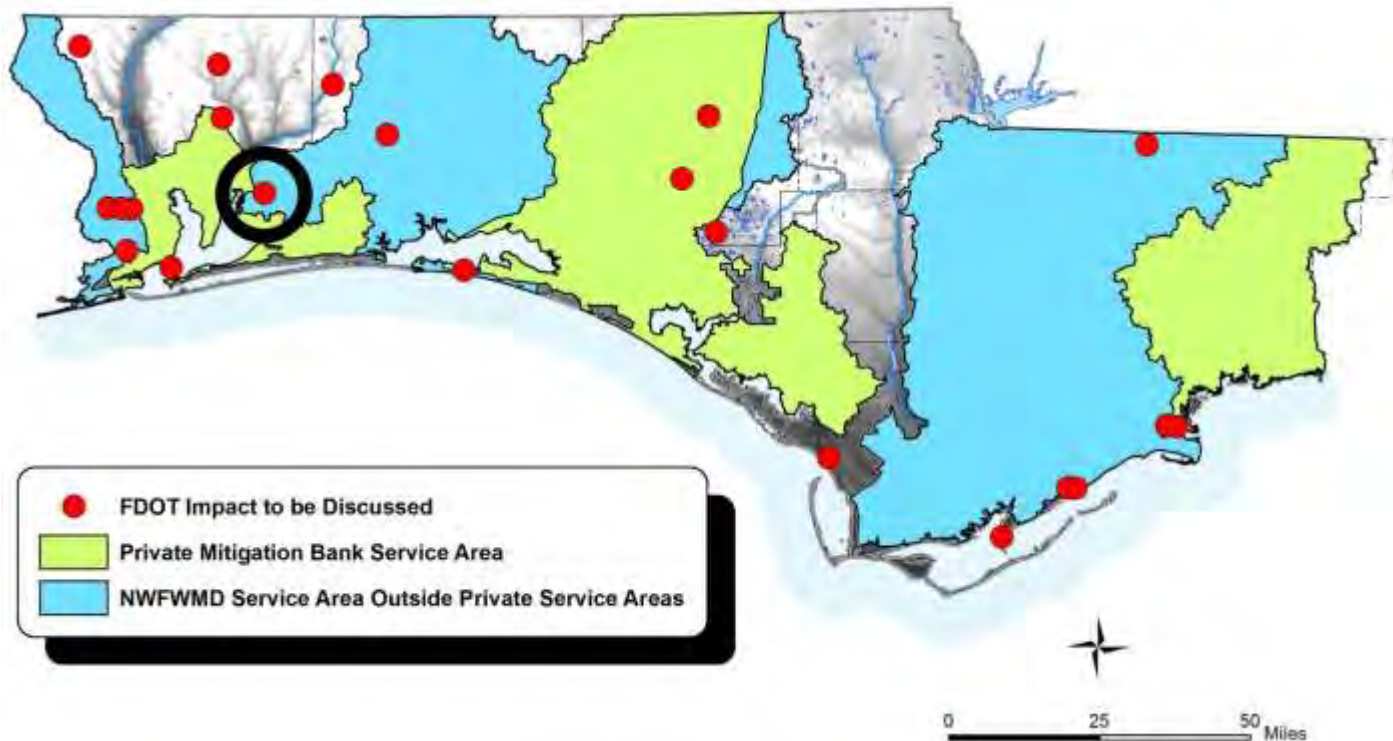
FDOT Mitigation Need

US 90A (from SR 297 to US 29; FPID 218605-3). Perdido watershed. No private mitigation bank option. 0.50 acres. Included in 2015 RMP Update to FDEP, this road project has been dropped from the current FDOT Escrow/Inventory.



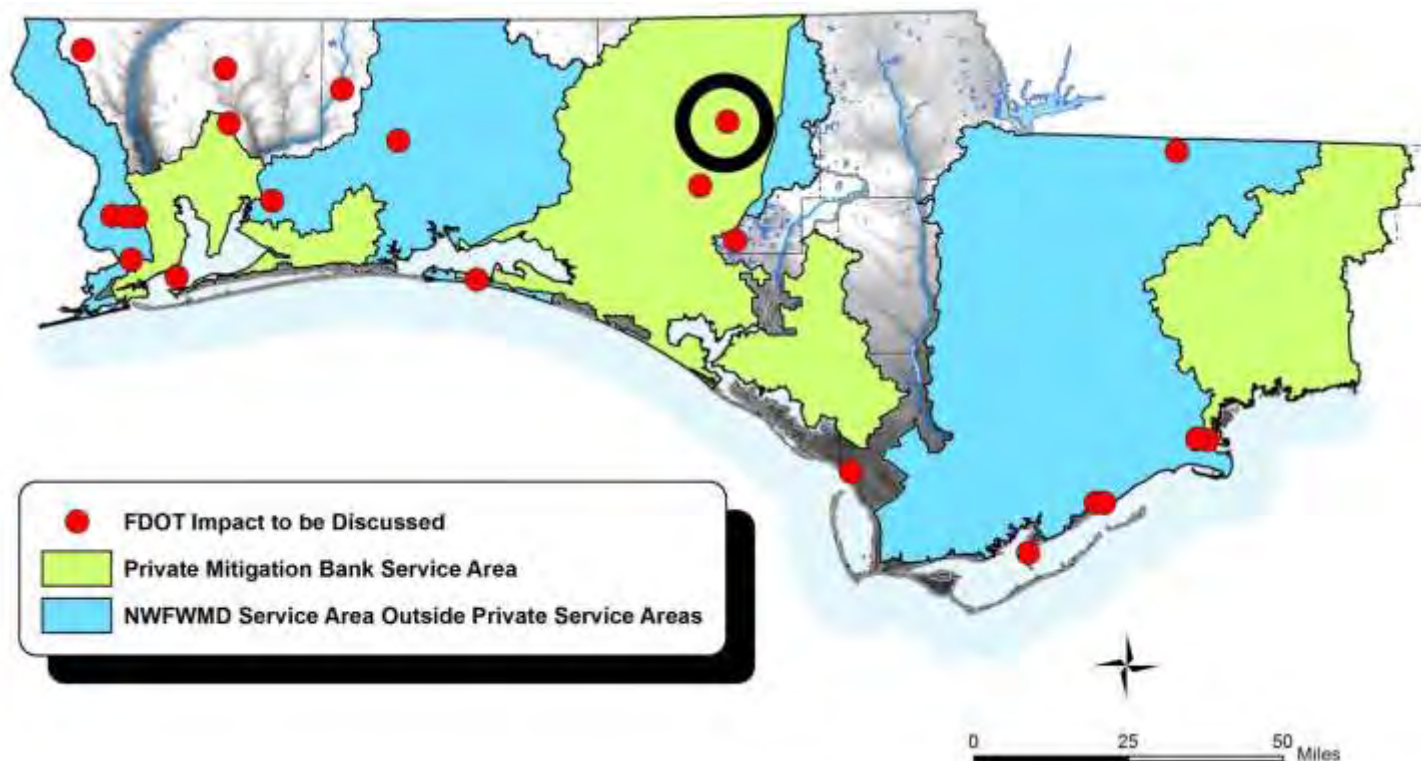
FDOT Mitigation Need Implemented

SR 87 at Yellow River; FPID 220442-7. Pensacola Bay (Yellow River) watershed. Mitigation has been implemented at Yellow River Ranch ILF (11.03 federal / 19.01 state credits debited 1/8/2016).



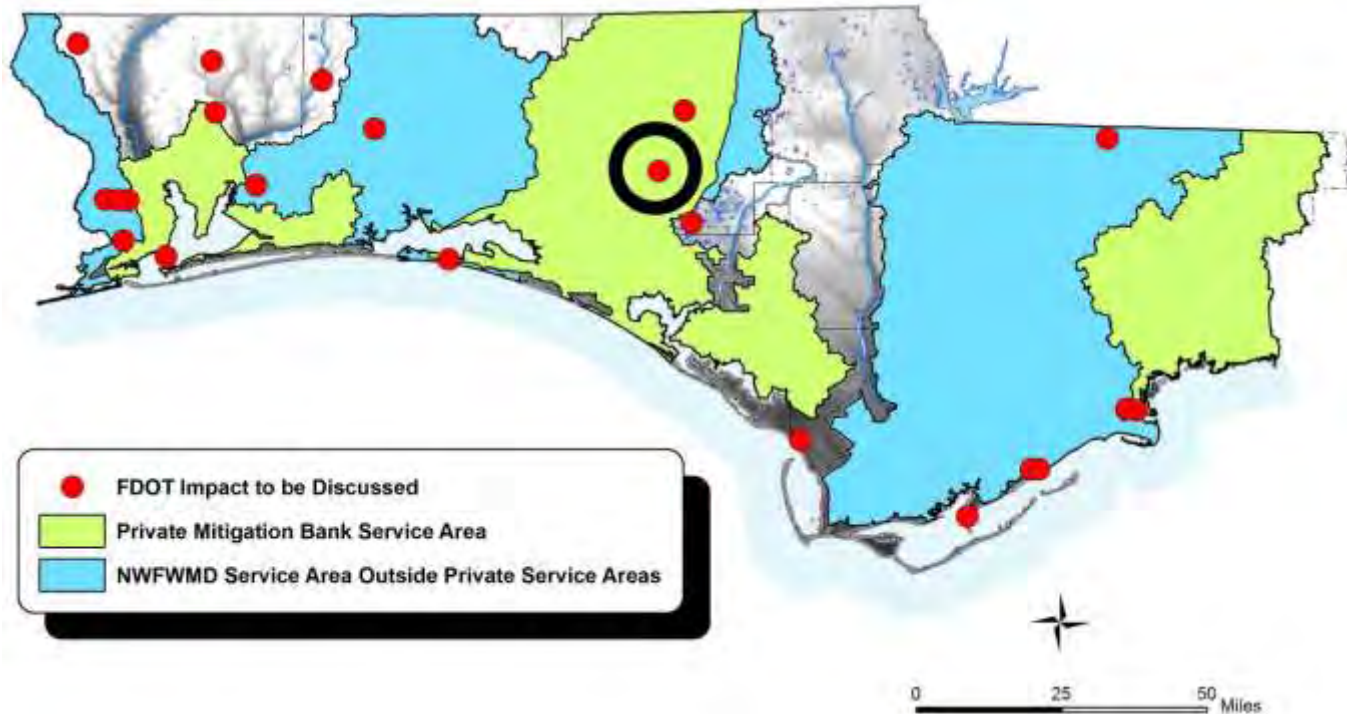
FDOT Mitigation Need Implemented

SR 79 (from Holmes/Washington County Line to I-10; FPID 220773-3). Choctawhatchee watershed. Mitigation has been implemented at Sand Hill Lakes Mitigation Bank (1.52 federal credits debited 12/17/2015; no mitigation required by state permits).



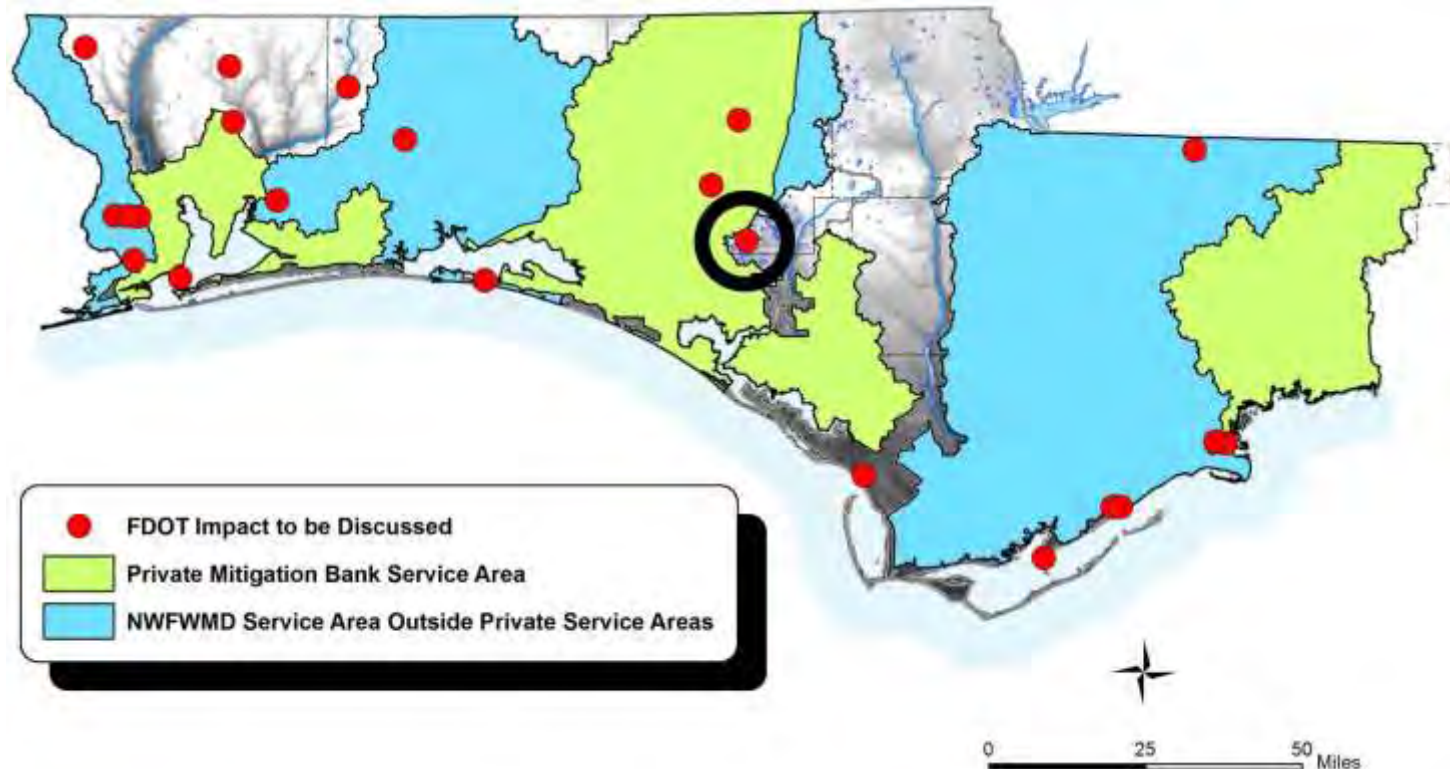
FDOT Mitigation Need

SR 79 (from Reedy Branch to Court Street; FPID 220773-6).
Choctawhatchee watershed. Potential mitigation, to avoid project delay, is use of Sand Hill Lakes Mitigation Bank.



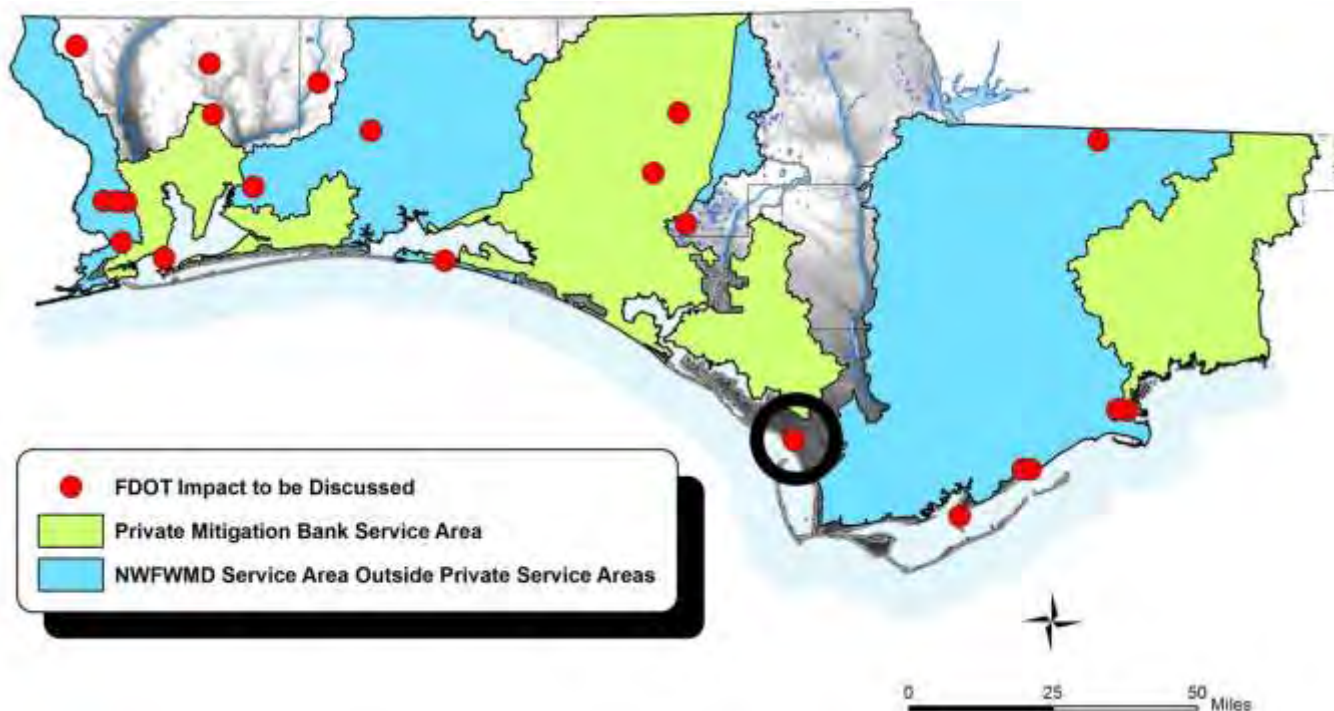
FDOT Mitigation Need

SR 77 (from Bay/Washington County Line to CR 279; 217909-3). Choctawhatchee watershed. Potential mitigation, to avoid project delay, is use of Sand Hill Lakes Mitigation Bank.



FDOT Mitigation Need

Gulf to Bay, Segment 2; FPID 410911-2. St. Andrew Bay watershed. Mitigation TBD (anticipated use of Horseshoe Creek Mitigation Bank under development). Permitting and project status?



NWFWMD Mitigation Project Updates

Sand Hill Lakes Mitigation Bank

In-Lieu Fee Projects

- Dutex, Yellow River Ranch, Lafayette Creek, Ward Creek West, Tates Hell, Shuler, Live Oak Peninsula

Non In-Lieu Fee Projects

- Perdido II, Plum Creek, St. Joseph Bay State Buffer Preserve (Treasure Road, Island Road, Southgate), Cotton Creek

Other Business or Concerns



US Army Corps
of Engineers®

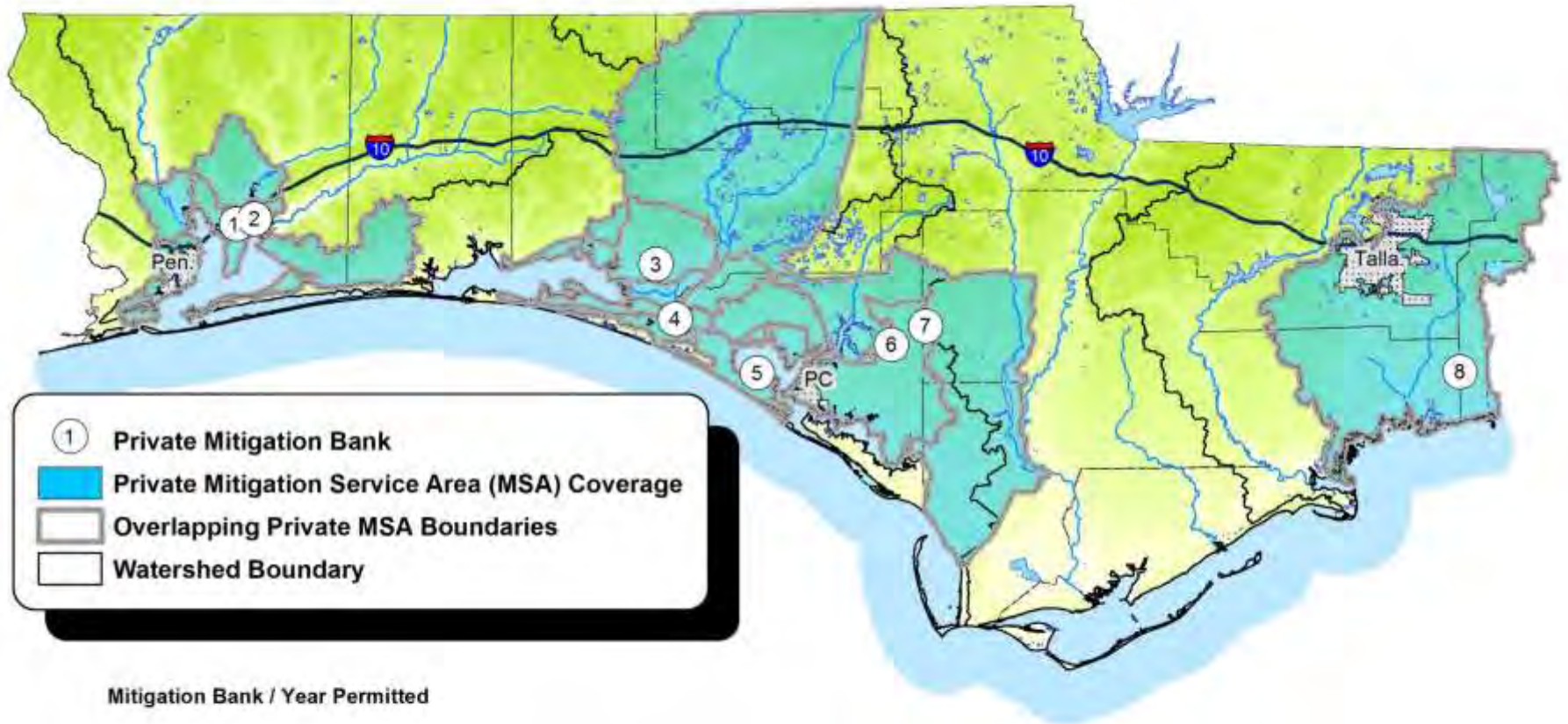


Wrap Up



Appendix Maps

Private Mitigation Banks in Northwest Florida

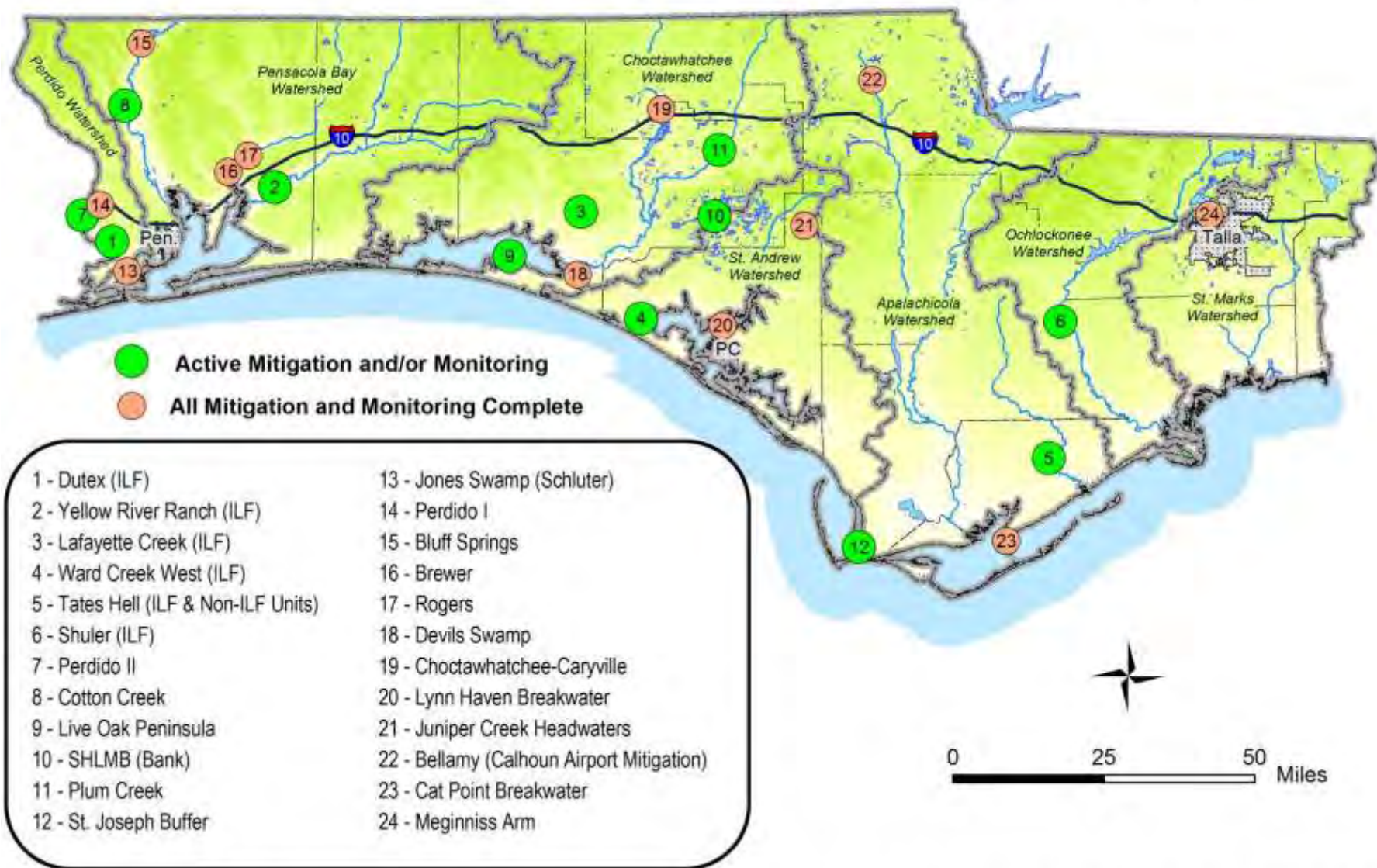


Mitigation Bank / Year Permitted

- 1 - Garcon Peninsula Mitigation Bank, 2001
- 2 - Pensacola Bay Mitigation Bank, 2009
- 3 - Nokuse Plantation Mitigation Bank, 2011
- 4 - Devils Swamp Mitigation Bank, 2010 (Mod)
- 5 - Breakfast Point Mitigation Bank, 2011 (Mod)
- 6 - Sweetwater Mitigation Bank, 2009
- 7 - Bear Creek Mitigation Bank, Pending
- 8 - St. Marks Mitigation Bank, 2011



All NFWFMD Mitigation Projects for FDOT Impacts (1997 - 2014)*



**Northwest Florida Water Management District
Regional Mitigation Plan Modification
(FDOT Projects Added to Inventory - March 2015 through February 2016)**

