

nwfwater.com

Inside this update:

Current Situation

Current Situation

1

534 AM EDT TUE JUN 7 2016

ALL WATCHES AND WARNINGS HAVE BEEN CANCELED

Latest Conditions

1

SITUATION OVERVIEW: TROPICAL STORM COLIN HAS MOVED OFF THE SOUTHEAST U.S. COAST AND CONTINUES TO MOVE RAPIDLY AWAY FROM FLORIDA.

POTENTIAL IMPACTS:

Tropical Storm Track

2

WIND: LITTLE TO NO ADDITIONAL IMPACTS ARE ANTICIPATED AT THIS TIME ACROSS WEST CENTRAL AND SOUTHWEST FLORIDA.

SURGE: LITTLE TO NO ADDITIONAL IMPACTS ARE ANTICIPATED AT THIS TIME ACROSS WEST CENTRAL AND SOUTHWEST FLORIDA.

Current Tropical Storm Radar

3

FLOODING RAIN: LITTLE TO NO ADDITIONAL IMPACTS ARE ANTICIPATED AT THIS TIME ACROSS WEST CENTRAL AND SOUTHWEST FLORIDA.

24-hour Observed Precipitation

4

...THE FLOOD WARNING CONTINUES FOR THE FOLLOWING RIVERS IN FLORIDA...ST. MARKS RIVER NEAR NEWPORT ON OLD MAGNOLIA RD AFFECTING WAKULLA COUNTY.

48-hour Precipitation Forecast

5

DAMAGES: NO DAMAGED HOMES; TWO BUSINESSES RECEIVED MINOR FLOODING FROM SURGE IN THE ST. MARKS AREA.

Current River Conditions

6

State Emergency Operations Center

Level 2

Riverine Flooding

7

Latest Conditions, NWS

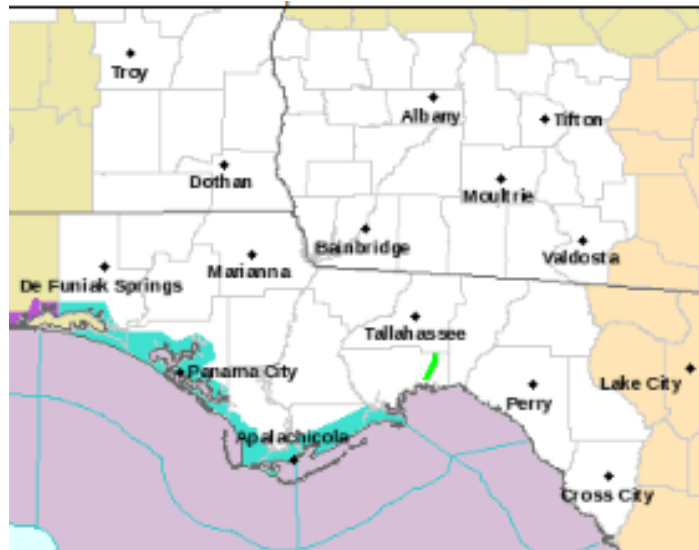
Links

8

Rivers and Creeks forecast to reach Minor Flood Stage:

Minor:

- St. Marks River, Newport

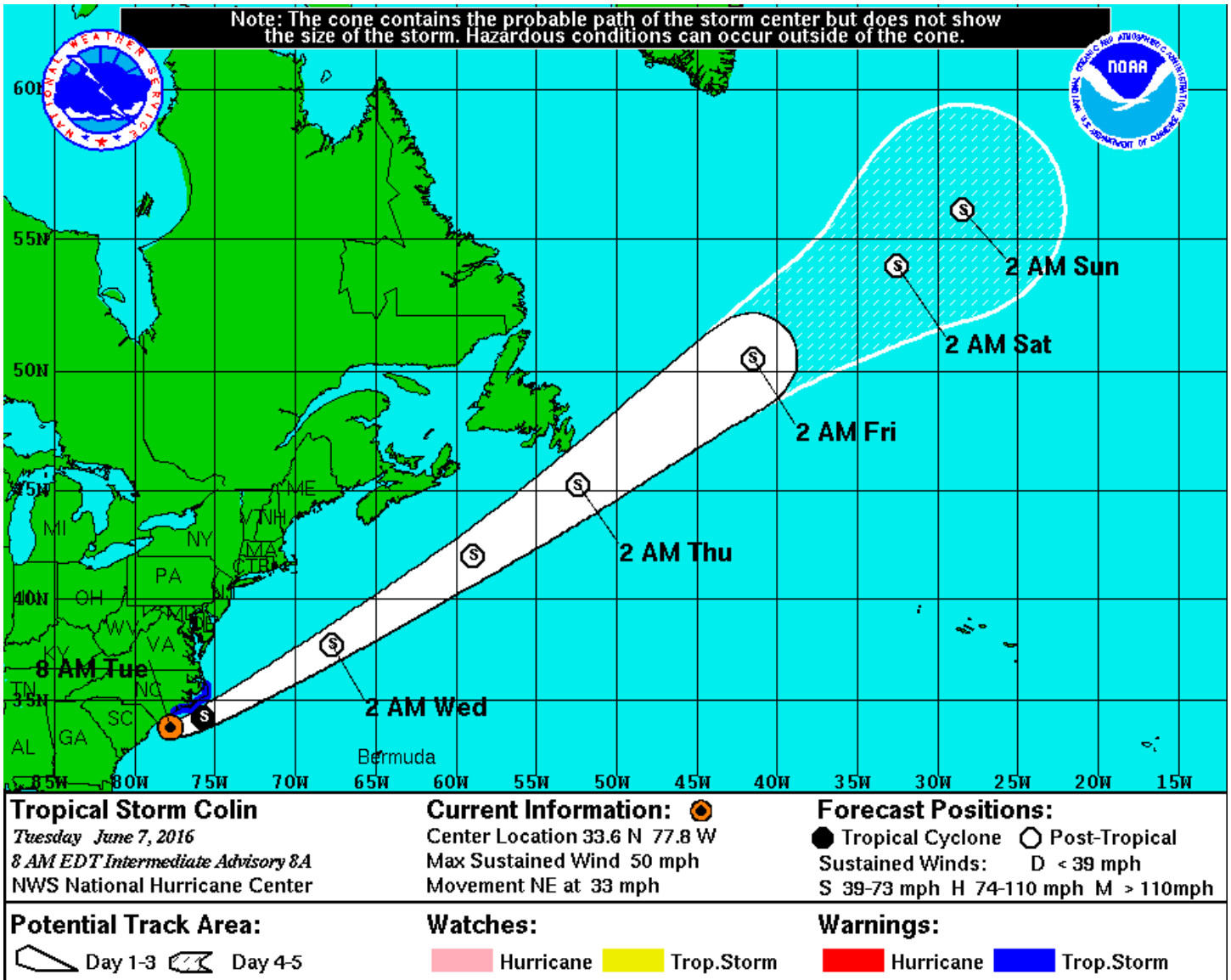


[Read watches, warnings & advisories](#)

Zoom Out

Flood Warning	
Hurricane Local Statement	
High Surf Advisory	
Small Craft Advisory For Hazardous Seas	
Small Craft Advisory	
Rip Current Statement	
Hazardous Weather Outlook	

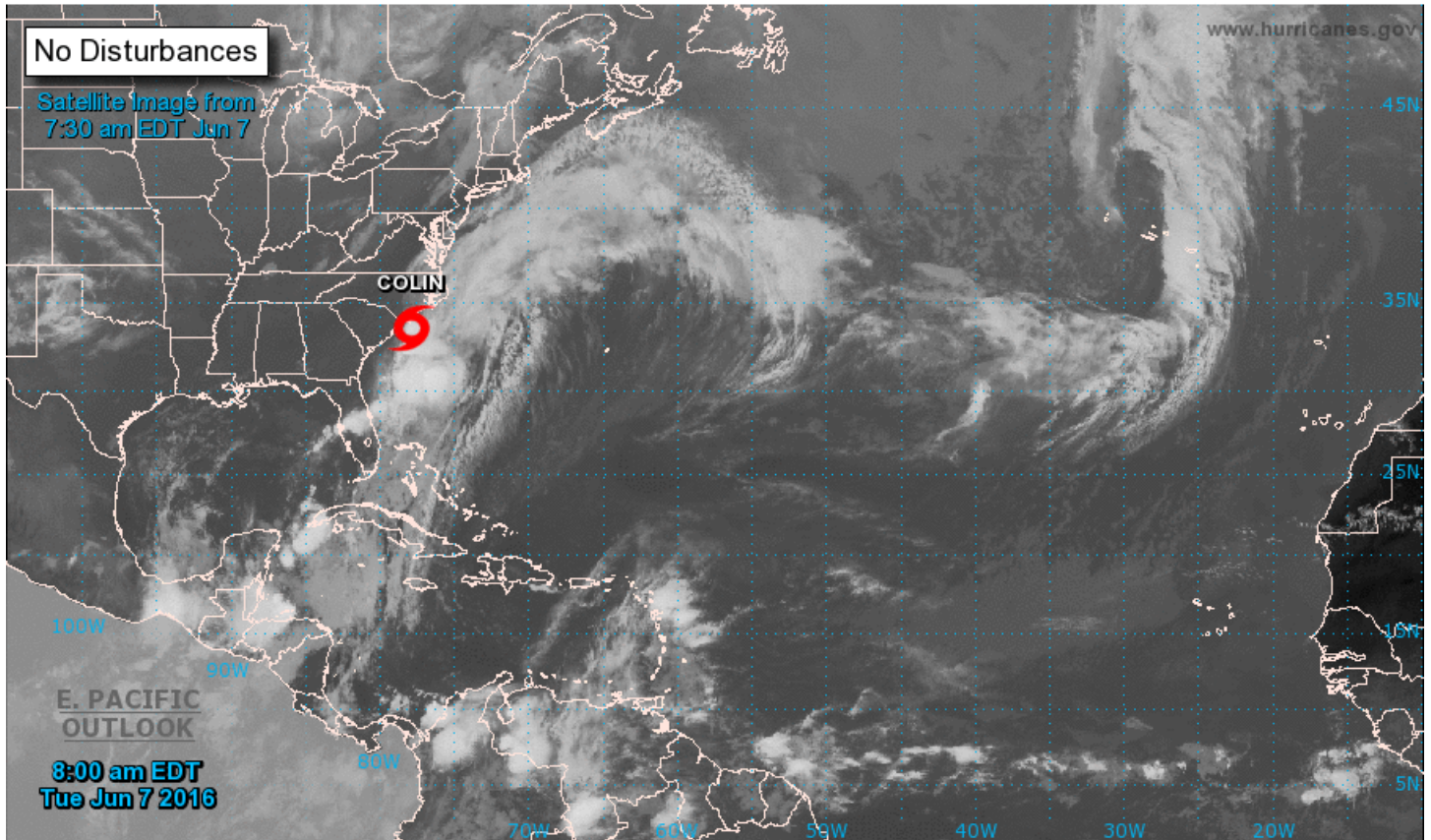
Tropical Storm Colin, Current Track



Tropical Storm Colin, Current Radar

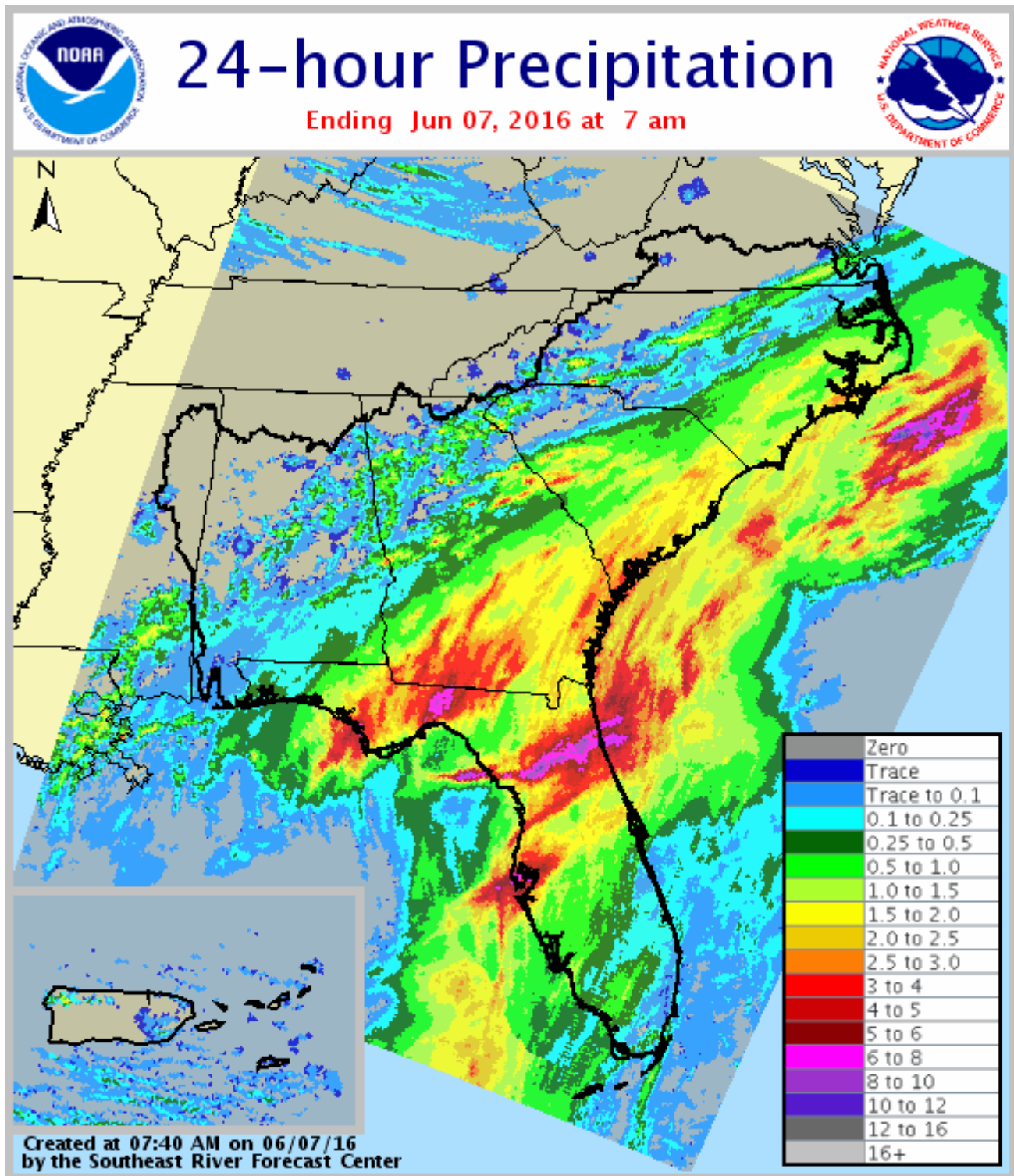


Two-Day Graphical Tropical Weather Outlook National Hurricane Center Miami, Florida

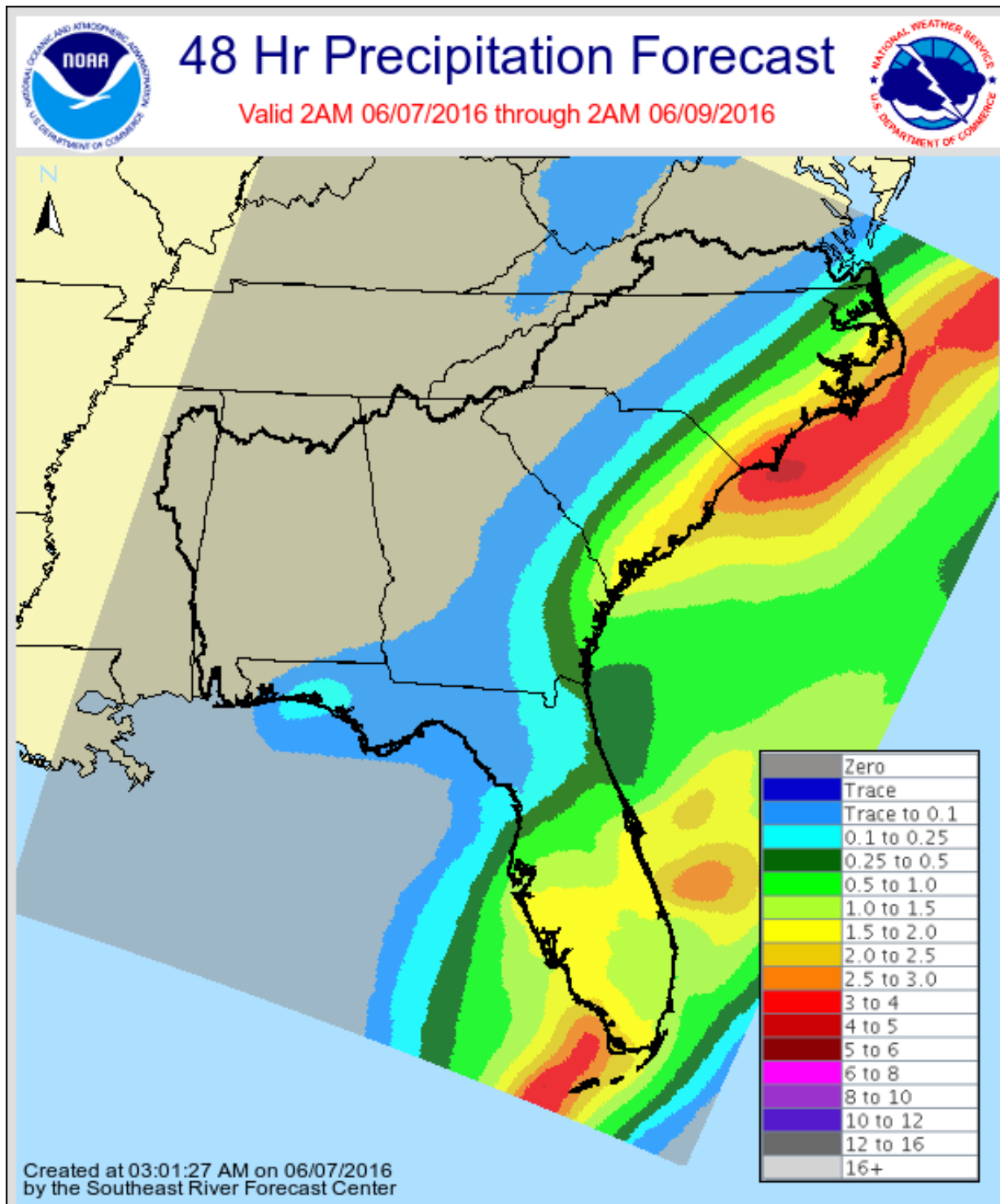


Current Disturbances and Two-Day Cyclone Formation Chance: < 40% 40-60% > 60%
Tropical or Sub-Tropical Cyclone: Depression Storm Hurricane
 Post-Tropical Cyclone Remnants

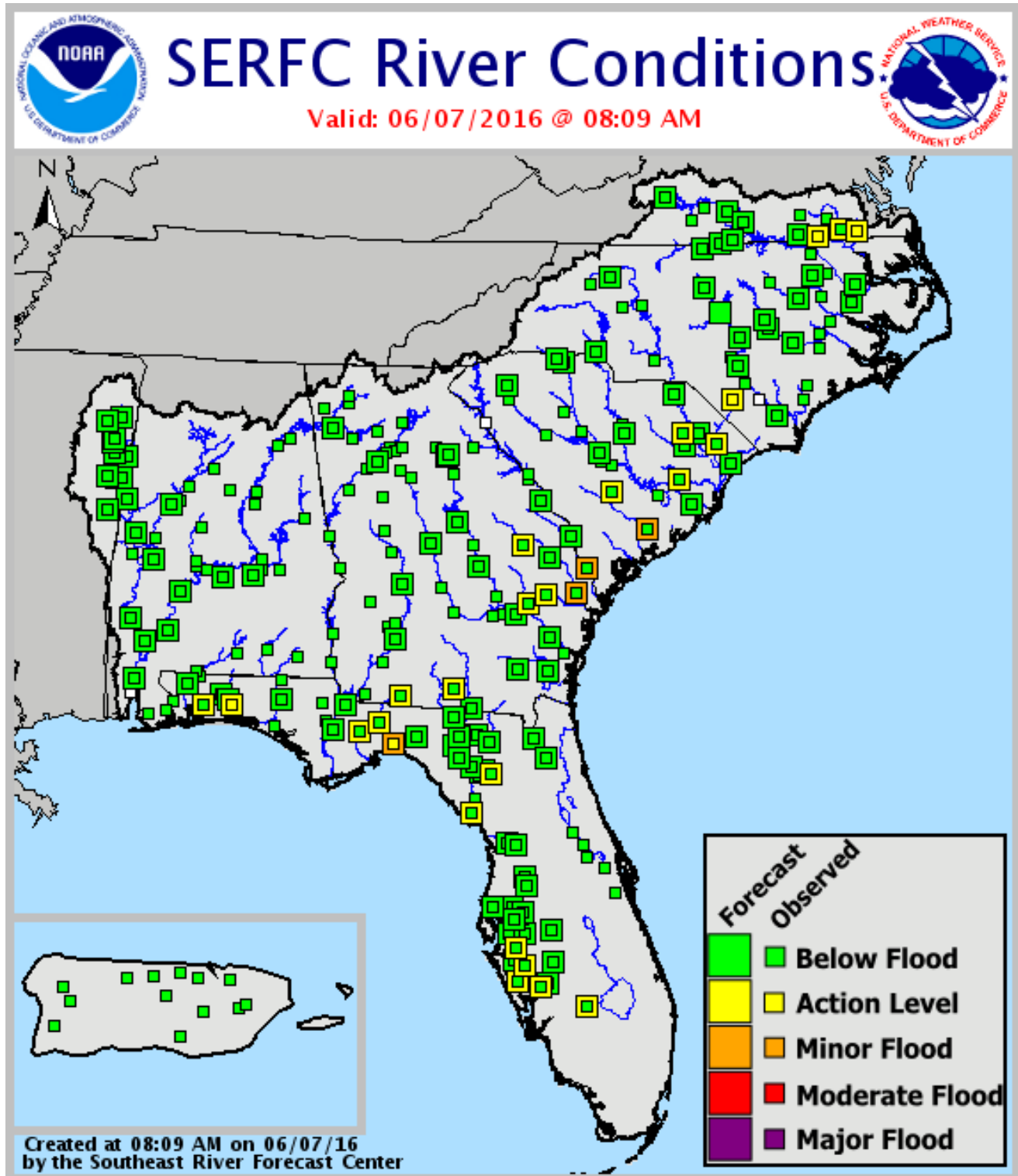
24-hour Observed Precipitation



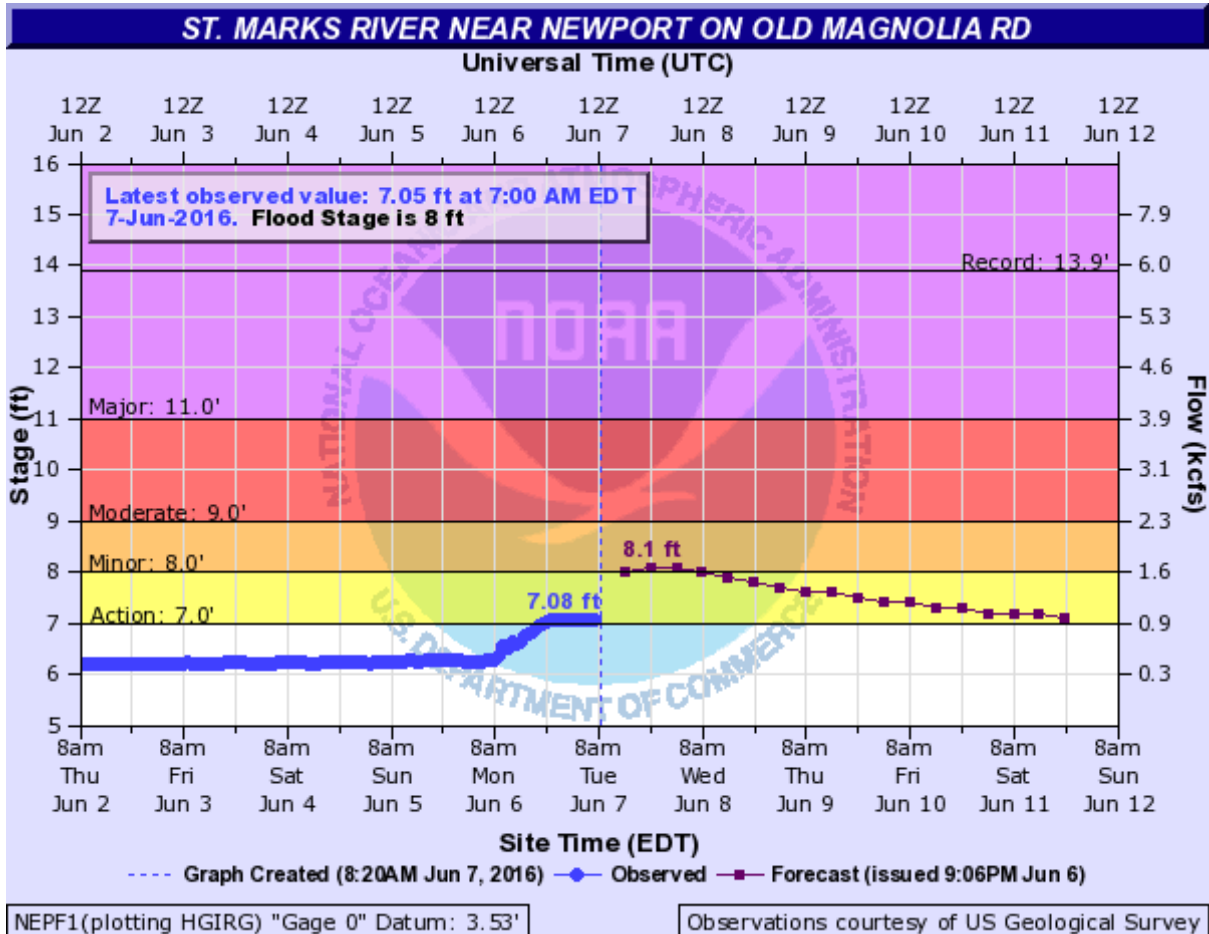
48-hour Forecast Precipitation



Current River Conditions



Riverine Flooding



- 11 Major flooding will occur in the area.
- 9 Natural Bridge Road will flood.
- 8 Minor lowland flooding begins.

NORTHWEST FLORIDA WATER MANAGEMENT DISTRICT

Northwest Florida Water Management District
81 Water Management Drive
Havana, FL 32333-4712

(850) 539-5999

(800) 913-1518 (toll-free)

(850) 539-2777

public.information@nfwwater.com



www.nfwwater.com

Links:

Southeast River Forecast Center: <http://www.srh.noaa.gov/serfc/>

National Hurricane Center: <http://www.nhc.noaa.gov/>

Florida Department of Emergency Management: <http://www.floridadisaster.org/index.asp>

National Weather Service: <http://www.weather.gov/>