

NORTHWEST FLORIDA WATER MANAGEMENT DISTRICT

REQUEST FOR QUOTES

March 28, 2022

CONTRACTUAL SERVICES FOR HURRICANE RECOVERY EFFORTS AND DEBRIS REDUCTION/CLEARANCE SERVICES
AND ROAD REPAIRS FROM PRE-QUALIFIED VENDORS AWARDED CONTRACTS
VIA REQUEST FOR PROPOSAL 20-001.

OVERVIEW

This Request for Quotes (RFQ) is for recovery efforts and debris reduction/removal clearance services (debris services), as well as Road Repairs to District managed roads in accordance with NFWFMD Requests for Proposal (RFP) 20-001, and the Agreements that resulted from RFP 20-001. The pre-qualified contractors selected through RFP 20-001 are the only entities permitted to submit a quote in response to this RFQ.

The specified Work involves hurricane debris cleanup services on 13 debris cleanup Work Groups and Road Repairs on one Unit (Total of 14 individual units) to be completed by **June 10, 2022**. These Work Groups are in Bay and Washington Counties in the Econfina Creek Water Management Area (WMA). Work will be awarded to Contractors by Task Order (TO), a draft copy of which is included in this RFQ. The TO will be adjusted according to the award of the Work.

Units 1 & 2: Debris Reduction- Contractors will provide a per acre price for debris cleanup services on Units 1-2. Quoted prices per Work Group/Unit shall not exceed the Ceiling Rates for Upland Managed Areas provided in response to RFP 20-001 and contained within the Contractor's Agreement by reference.

Units 3-13: Hazardous Tree and Vegetative Debris Removal Contractors will provide a lump sum price for all work specified in the individual Work Group/Unit according to the Work Operation Instructions in Table 1 and shall include all components required to complete the work including labor and equipment rates as well as disposal fees and all other related costs included in the lump sum bid.

Unit 14: District Road Repairs- Contractors will provide the District with lump sum price for each road repair job that includes all components required to complete the Work. Distribution of the specified road materials is based on an average road width of 12 feet and a depth of 4 inches. In addition to spreading the road materials, the contractor will be required to install water bars, turnouts.

For all Work Group items listed above the Work will be awarded by **Work Group/Unit** and in the manner that best serves the District to ensure completion of the specified services within the specified timeframe. Work Group/Unit pricing will be the primary factor that determines how the Work will be awarded but is not the sole factor. At its sole discretion, the District may elect to not award all Work Groups and may negotiate pricing with companies submitting quotes.

SUBMITTING QUOTES

- Please send quote via email **by 10:00 AM ET on April 1, 2022.**
- Companies are not required to quote all Work Groups/Units.
- Companies not submitting a quote for any of the Work Groups must submit a “**No Quote**” response.
- Submit Quotes on the attached one-page Excel Quote Sheet to Agency.clerk@nwfwater.com

Excel Quote Sheet must be returned as a pdf.

QUOTE SHEET-MARCH 28, 2022 RFQ

NWFWMD RECOVERY EFFORTS AND DEBRIS REDUCTION CLEARANCE SERVICES

Company:							
Quote Prepared by:							
Date:							
Unit #	Work Group/ Unit Name	Contract Acres	Work Operation Instructions	Existing Vegetation	Per Acre Rate	Unit Total	# Days to Complete Unit
1	Ten Mile West	135.00	Vegetative Debris Removal within entire unit (Preserve Residual Trees)	Mixed Hardwood & Pine/ Standing and Downed Debris			
2	Scott Rd.	88.00	Vegetative Debris Removal within entire unit (Preserve Residual Trees)	Mixed Hardwood & Pine/ Standing and Downed Debris			
Unit #	Work Group/ Unit Name	Work Type	Work Operation Instructions	Special Instructions	N/A	Lump Sum Bid (All Items Below)	# Days to Complete Unit
3	Blue Springs Campground	Hazardous Tree Removal	Cut & Remove (1) Dead Standing Oak- (Along Entrance Rd on Left) Cut & Remove 1 Water Oak and 1 dead snag behind Campsite #2 Site Marker	Haul Away all Debris Cut Stumps 6" or less above ground	N/A		
4	Sparkberry Campground	Hazardous Tree & Vegetative Debris Removal	Cut & Remove (7) Dead Live Oak Trees (Avg DBH 24") throughout campground Remove Dead Vegetative Debris at Campground Entrance debris consists of logs and brush (approx 20 Cubic Yards)	Haul Away all Debris Cut Stumps 6" or less above ground	N/A		
5	Econfina Creek Canoe Launch	Hazardous Tree Removal	Cut & Leave In Place (8) dead standing snags along boardwalk to Canoe Launch (Mixed DBH) Note- Work is Located in Wetland. Several Trees are hanging over or adjacent to boardwalks	Cut snags and Leave in Place Cut stumps to 1' or less above water line No Heavy Equipment Permitted in Wetland Hand Crew Only	N/A		
6	Econfina Field Office	Hazardous Tree Removal & Debris Removal	Cut and Remove (1) Dead Pine Snag in front of Field Office & Grind stump below ground level Load and Haul Away approximately 120 Cubic Yards of Hurricane damaged Boardwalk Debris- Behind Econfina Field Office	Cut and Haul Away Tree & Grind Stump Boardwalk Debris consists of lumber, Concrete, fencing, etc to be removed- Several Piles	N/A		
7	Pitt Springs Day Use Area	Hazardous Tree Removal	Cut & Leave in Place (2) Hazardous Pine snags (on end of boardwalk to Sylvan Springs)	Cut snags and Leave in Place Cut stumps to 1' or less above water No Heavy Equipment Permitted in Wetland Hand Crew Only	N/A		
8	Williford Springs Day Use Area	Hazardous Tree Removal	*Cut and Leave in Place (7) Dead standing (primarily oak) snags along entire boardwalk- from Williford Spring Overlook Platform, south to Water Access Platform (DBH Range from 8"-24")	Cut snags and Leave in Place Cut stumps to 1' or less above water line No Heavy Equipment Permitted in Wetland Hand Crew Only	N/A		
9	Rattlesnake Lake North Day Use and Camping Areas	Hazardous Tree Removal	*Cut & Remove all dead Live Oak Trees between day use recreation areas and campsite areas Grind All stumps below ground level. Approximately 20 trees with DBH between 10" to 50"	Cut and Haul Away Trees & Grind Stumps below ground level	N/A		
10	Walsingham Bridge Rd. (Walsingham Bridge to Walsingham Park Area)	Hazardous Tree Removal & Vegetative Debris Removal	*Cut and Leave in Place approximately (10) dead standing snags in wetland on NorthEast side of Bridge *Remove all dead Vegetative Debris and Piles within 50' of roadway from NE side of Bridge to Campsite *Cut & Remove (2) Large Pines and 1 Large Oak Adjacent to Walsingham Campsite Area (uplands) (1 pine is across roadway North of restroom; other is approximately 50-75' feet SE of campsite) (Oak is adjacent to Canoe Launch)	Cut stumps to 1' or less above water line Use Caution not to damage water level gauge Work is primarily located in sensitive wetland area. No heavy machinery or equipment will be permitted in work area. Primary debris removal method will require hand crews or use of grapple from roadway	N/A		
11	Walsingham Bridge Rd. (Main road to Longleaf Campsite)	Hazardous Tree Removal	*Cut & Remove (12) dead Longleaf Pine Trees along both sides of roadway from Longleaf/Seashell Entrance up to and including Longleaf Campsite (Trees have 12"-24" DBH and are approximately 80'-100' tall)	Cut & Haul Away Trees (Stumps shall be cut to less than 6" above ground)	N/A		
12	Walsingham Bridge Rd. (Main Road from Longleaf to Seashell Campsite)	Hazardous Tree Removal	*Cut & Remove (8) dead Longleaf Pines along both sides of roadway from Longleaf Campsite to Seashell use area including Seashell Campsite (Trees have approximately 24" DBH and are approximately 80'-100' tall) * Remove debris pile of dead trees and mixed vegetative debris adjacent to creek (approx 20-40 CY)	Cut and Haul Away Trees and Vegetative Debris (Stumps shall be cut to less than 6" above ground)	N/A		
13	Walsingham Bridge Rd (Main Road from Seashell to Devils Hole) Including Devils Hole Swimming Area and Campsite	Hazardous Tree Removal & Vegetative Debris Removal	*Cut & Remove approximately (23) dead Longleaf Pines & (3) Oak Trees along both sides of roadway from Seashell Use Area to Devils Hole Use Area *Cut and Remove all dead standing, lying and underwater trees and dead vegetative debris greater than 3" in diameter within the Devils Hole Swimming Area and within a distance of 75' around the vegetative buffer surrounding Devils Hole. * Cut and Remove all dead standing, lying and underwater trees and dead vegetative debris greater than 3" in diameter within the Karst Feature (wetland area between Devils Hole Restroom and the Devils Hole Campsite and within a distance of 50' around the vegetative buffer surrounding the Karst Feature).	Uplands- Cut & Haul away trees and vegetative debris. Stumps shall be cut to less than 6" above ground Wetlands- Cut and haul away Trees and vegetative Debris. Work is primarily located in sensitive wetland area. No heavy machinery or equipment will be permitted in these areas in wetland areas surrounding Devils Hole and Karst Feature. Primary debris removal method will require hand crews or use of grapple from roadway	N/A		
14	Mabel Porter Road	Road Repairs	Complete Road repairs to 4700 Feet of Mable Porter Rd. (Labor and Approximately 3500 Tons of Material) *Repair washouts by pulling all available loose fill material from lower sections of roadway back into washout areas. *Install 4 water turn outs to redirect water from roadway as directed by District staff. * Provide, Install and Compact 300 Tons (Approximately 300 Cubic yards) of 1-3 Inch Lime Rock for repairing remaining washouts back to existing grade *Provide and Spread 3000 Tons (Approximately 3000 Cubic Yards) of 1-3 Inch Limerock along entire length of road section (4,700 feet) and spread 12' wide by 4" thick	Only loose fill material which is within lower portions of the roadway can be utilized to fill ruts in roadway. Do not enter natural areas or wetlands to obtain onsite fill materials. 1-3 Inch limerock for repairing washout areas must be compacted before placing final 1-3 inch limerock layer.	N/A	Lump Sum Bid	Price Per Ton for all work completed and # of Days to Complete
Authorized Signature:							
Q1- (Units 1 & 2) Assuming your company receives a Task Order and Notice to Proceed by April 10, 2022 Enter the number of acres this company can complete by June 10, 2022. (Please note that the contractor will be required to provide a performance bond equal to 25% of the Task Order Amount to guarantee the work completion by the date provided. <u>No Extensions will be Given</u>)							
Q2- (Units 3-14) Assuming your company receives a Task Order and Notice to Proceed by April 10, 2022 for the above listed Tree Removal or Debris Removal or Road Projects, please list the Unit #'s that your company can complete by June 10 (Please note that the contractor will be required to provide a performance bond equal to 25% of the Task Order Amount to guarantee the work completion by the date provided. <u>No Extensions will be Given</u>)							

Please submit this sheet to: Agency.Clerk@nwfwater.com by 10:00 am ET Friday April 1st, 2022

Submit this sheet to: Agency.Clerk@nwfwater.com by 10 AM E.T. APRIL 1, 2022

Draft Task Order

(Final Task Order acreages and Contractor Group assignments will be adjusted according to the award of the Work)

General Description and Location

This Task Order (TO) is for debris reduction services and/or hazardous tree removal within thirteen debris cleanup Work Groups and one Road Repair Work Group. These Work Groups are in Bay and Washington Counties in the Econfina Creek WMA. The fourteen Work Groups have been identified and delineated on the attached Exhibit Maps. The Work Groups will be reviewed by the CONTRACTOR and agreed upon prior to the operations with assistance from the DISTRICT. All Work is to be conducted in accordance with NFWFMD Agreements issued as the result of RFP 20-001 and any additional schedules and specifications contained in this TO.

The objectives for the 13 debris removal Work Groups are to remove hurricane related debris and to reduce wildfire fuel accumulation and safety hazards without damaging residual trees and facilities. Contractors are encouraged, but not required, to utilize removed vegetation for fiber production, fuelwood, or other beneficial use.

The objective for the road repair Work Group is to repair the roadway from erosion due to major flooding from Hurricane Michael.

Contact Persons

The District's contact persons are:

Eric Toole (Site Manager) who can be reached at 850-722-9919 (office) 850-510-3696 (cell) and email at Eric.Toole@nfwwater.com

Benjamin Faure (Project Manager) who can be reached at 850-722-9919 (office switchboard), 850-510-0399 (cell/text), or via email at Benjamin.Faure@nfwwater.com

Danny Layfield (Contract Manager) who can be reached at 850-539-5999 (office switchboard), or via email at Danny.Layfield@nfwwater.com

Hunting/Public Use Information

District lands are open to public use year-round, including hunting. Contractors must be aware of public users and plan and execute their Work accordingly. Sites with public recreation amenities may be closed to protect public safety. Placement of signage before and during the Work is allowed and encouraged. Hunting seasons, quota hunt dates, and other information and regulations can be found online at: <http://myfwc.com/hunting/wma-brochures>

<https://ocean.floridamarine.org/HGMSearch/BrochureDetails.aspx?sb=&srctype=pfs&fsid=650>

Work Completed and Billing

Note All work for Units Below must be completed and Invoiced by June 10, 2022. No time extensions are allowed.

For Work Groups/Units 1 and 2

The District anticipates monthly billing with measured stages of completion. For the debris cleanup Work Groups/Units, completion will be measured in acreage. For acres where debris is gathered and ready for processing, the Work will be considered 50 percent complete. Acreage where debris has been completely reduced and removed in accordance with the specifications herein will be considered 100 percent complete. After the Contractor has notified the District that a portion of a Work Group is complete, District field staff will inspect the Work Group for contract compliance. Only those acres within a Work Group/Unit determined to meet debris clearance and reduction/removal goals as specified will be authorized for billing and payment. The Contractor or District staff will map the area(s), quantify the acres cleared and debris acres reduced/removed. The Contractor will provide invoices based on this measurement. The District may also employ the use of aerial drone photography and/or video to document the Work progress and completion.

For Work Groups/Units 3 through 13

The District anticipates a lump sum invoice for the completion of all work in accordance with all specifications provided in the Work Group/Unit Instructions. Upon completion of the work, the Contractor will submit an Invoice for payment and District Staff will inspect the completion of the work for billing and payment.

For Work Group/Unit 14:

Payments will be made using the rates provided in the Contractor's quote as specified in Tables 1 and 2 of the TO. Payment for the Work will be subject to inspection and approval by the District's regional land managers or by the District's Chief, Bureau of Land Management Operations, who will be the Project Manager. One or both of these District representatives will determine in their sole discretion whether or not the Contractor has successfully completed all phases of the Work assignment, and payment will not be made to the Contractor until the District receives written authorization to do so by one or both of these District representatives.

Invoices for the Mable Porter Road Repair project must specify the length of Work completed and the amount (tons) and type of material applied, by project. Scale tickets showing the weight of materials delivered and applied shall be provided with the invoices to document the amount of material provided.

Partial Payments for completed work

If partial payments are to be made, acres will be used as the deliverable unit for Units 1 & 2, and Tons will be utilized as the deliverable unit for Unit 14, and payments will be based upon the amount of acres completed (Units 1 & 2) or feet of roadway completed (Unit 14), at a per acre or per ton price based upon the Contractor's project RFQ. No partial payments will be allowed for units 3 through 13 and will be billed in a lump sum when all work has been completed.

For All Work Units :

The District may, at its sole discretion, extend or end the time allowed for completion of this project due to water levels, inclement weather, or fire (prescribed or wild). Therefore, the District reserves the right to make partial payments to the Contractor at periodic intervals when a representative portion of the project has been completed as determined by the District Project Manager.

Task Order Performance Bond

The Contractor shall provide a Task Order Performance Bond in the amount of twenty five percent (25%) of the Task Order amount to be held by the District to insure contract compliance and to pay any damages sustained by the District due to the Contractor's negligence or breach of contract. A Notice to Proceed shall be issued for the TO Work only after the District has received the Contractor's Task Order Performance Bond and other required paperwork. Task Order Performance Bonds provided by a check will be deposited and the amount will be returned to the Contractor within 30 days of successful completion of all terms and conditions of the TO.

SCOPE OF WORK

The Scope of Work below will be adapted to and included in each Task Order issued for the Work Groups contained in this RFQ.

Background

Hurricane Michael severely impacted District-owned land areas and roads in Bay and Washington Counties. Within the Econfinia Creek WMA, the District has identified approximately 13 work groups/units that currently require hurricane debris management and recovery services and 1 work group unit which requires road repairs. The Work Groups are illustrated on the attached Exhibit Maps.

Description of Work

- A. For Units 1-2 with the work operation specified as “Vegetative Debris Removal” the Contractor will select the most efficient method or combination of methods for raking and piling and removing the debris in its entirety from the Unit(s) or burning the debris in its entirety on site.

For Work Groups 1-2 with the Work Operation specified as “**Preserve Residual Trees**” in Table 1, the Contractor shall remove from the project area:

- All downed trees greater than 4” (four inches) in diameter;
- All standing dead trees greater than 4” (four inches) in diameter at breast height (DBH) (including all standing stems broken off above the base);
- All standing live trees greater than 4” (four inches) DBH that are leaning more than 25 degrees from vertical (exception for hardwoods naturally growing at an angle);
- All vegetative debris greater than 4” (four inches) in diameter that is either down or is felled during the Work.

- B. For Units 3-13 with the Work Operation specified as hazardous tree and/or vegetative debris removal in Table 1, the Contractor shall remove from the project area all specified debris according to the Work Order Instructions and specifications and Special Instructions provided within Table 1. All vegetative debris in these units must be removed and disposed of offsite. Only those Units where trees can be left in place will be permitted to remain within the unit to prevent damage to sensitive wetland areas.

C. For Unit 14 (Mabel Porter Rd) The work specifications for road repairs are as follows:

The location, road length, material and tonnage needed for road repairs are listed in Table 1 (above) and in the Road Repair Exhibit Maps. The desired road dimension for spreading the rock are 12 feet wide by 4 inches thick unless otherwise specified in Table 1 (above)

If the project includes the installation of water bars/turnouts using native materials capped with the rock specified for the project area. Site managers will assist with designating the location of water bars/turnouts during the Work operations.

Alternative materials (ex.-different size rock or crushed concrete of appropriate size) can be utilized **only with the written approval of the Site Manager** if the availability of rock or site conditions require changes. Such approval shall be at the sole discretion of the Site Manager.

ALL WORK MUST BE COMPLETED BY June 10, 2022.

Table 1. Work Operation Instructions, Existing Vegetation and Special Instructions

Unit #	Work Group/ Unit Name	Contract Acres	Work Operation Instructions	Existing Vegetation
1	Ten Mile West	135.00	Vegetative Debris Removal within entire unit (Preserve Residual Trees)	Mixed Hardwood & Pine/ Standing and Downed Debris
2	Scott Rd.	88.00	Vegetative Debris Removal within entire unit (Preserve Residual Trees)	Mixed Hardwood & Pine/ Standing and Downed Debris
Unit #	Work Group/ Unit Name	Work Type	Work Operation Instructions	Special Instructions
3	Blue Springs Campground	Hazardous Tree Removal	Cut & Remove (1) Dead Standing Oak- (Along Entrance Rd on Left) Cut & Remove 1 Water Oak and 1 dead snag behind Campsite #2 Site Marker	Haul Away all Debris Cut Stumps 6" or less above ground
4	Sparkleberry Campground	Hazardous Tree & Vegetative Debris Removal	Cut & Remove (7) Dead Live Oak Trees (Avg DBH 24") throughout campground Remove Dead Vegetative Debris at Campground Entrance debris consists of logs and brush (approx 20 Cubic Yards)	Haul Away all Debris Cut Stumps 6" or less above ground
5	Econfina Creek Canoe Launch	Hazardous Tree Removal	Cut & Leave In Place (8) dead standing snags along boardwalk to Canoe Launch (Mixed DBH) Note- Work is Located in Wetland. Several Trees are hanging over or adjacent to boardwalks	Cut snags and Leave in Place Cut stumps to 1' or less above water line No Heavy Equipment Permitted in Wetland Hand Crew Only
6	Econfina Field Office	Hazardous Tree Removal & Debris Removal	Cut and Remove (1) Dead Pine Snag in front of Field Office & Grind stump below ground level Load and Haul Away approximately 120 Cubic Yards of Hurricane damaged Boardwalk Debris- Behind Econfina Field Office	Cut and Haul Away Tree & Grind Stump Boardwalk Debris consists of lumber. Concrete, fencing, etc to be removed- Several Piles
7	Pitt Springs Day Use Area	Hazardous Tree Removal	Cut & Leave in Place (2) Hazardous Pine snags (on end of boardwalk to Sylvan Springs)	Cut snags and Leave in Place Cut stumps to 1' or less above water No Heavy Equipment Permitted in Wetland Hand Crew Only
8	Williford Springs Day Use Area	Hazardous Tree Removal	*Cut and Leave in Place (7) Dead standing (primarily oak) snags along entire boardwalk- from Williford Spring Overlook Platform, south to Water Access Platform (DBH Range from 8"-24")	Cut snags and Leave in Place Cut stumps to 1' or less above water line No Heavy Equipment Permitted in Wetland Hand Crew Only
9	Rattlesnake Lake North Day Use and Camping Areas	Hazardous Tree Removal	*Cut & Remove all dead Live Oak Trees between day use recreation areas and campsite areas Grind All stumps below ground level. Approximately 20 trees with DBH between 10" to 50"	Cut and Haul Away Trees & Grind Stumps below ground level
10	Walsingham Bridge Rd. (Walsingham Bridge to Walsingham Park Area)	Hazardous Tree Removal & Vegetative Debris Removal	*Cut and Leave in Place approximately (10) dead standing snags in wetland on NorthEast side of Bridge *Remove all dead Vegetative Debris and Piles within 50' of roadway from NE side of Bridge to Campsite *Cut & Remove (2) Large Pines and 1 Large Oak Adjacent to Walsingham Campsite Area (uplands) (1 pine is across roadway North of restroom; other is approximately 50-75' feet SE of campsite) (Oak is adjacent to Canoe Launch)	Cut stumps to 1' or less above water line Use Caution not to damage water level gauge Work is primarily located in sensitive wetland area. No heavy machinery or equipment will be permitted in work area. Primary debris removal method will require hand crews or use of grapple from roadway
11	Walsingham Bridge Rd. (Main road to Longleaf Campsite)	Hazardous Tree Removal	*Cut & Remove (12) dead Longleaf Pine Trees along both sides of roadway from Longleaf/Seashell Entrance up to and including Longleaf Campsite (Trees have 12"-24" DBH and are approximately 80'-100' tall)	Cut & Haul Away Trees (Stumps shall be cut to less than 6" above ground)
12	Walsingham Bridge Rd. Main Road from Longleaf to Seashell Campsite	Hazardous Tree Removal	*Cut & Remove (8) dead Longleaf Pines along both sides of roadway from Longleaf Campsite to Seashell use area including Seashell Campsite (Trees have approximately 24" DBH and are approximately 80'-100' tall) * Remove debris pile of dead trees and mixed vegetative debris adjacent to creek (approx 20-40 CY)	Cut and Haul Away Trees and Vegetative Debris (Stumps shall be cut to less than 6" above ground)
13	Walsingham Bridge Rd (Main Road from Seashell to Devils Hole) Including Devils Hole Swimming Area and Campsite	Hazardous Tree Removal & Vegetative Debris Removal	*Cut & Remove approximately (23) dead Longleaf Pines & (3) Oak Trees along both sides of roadway from Seashell Use Area to Devils Hole Use Area *Cut and Remove all dead standing, lying and underwater trees and dead vegetative debris greater than 3" in diameter within the Devils Hole Swimming Area and within a distance of 75' around the vegetative buffer surrounding Devils Hole. * Cut and Remove all dead standing, lying and underwater trees and dead vegetative debris greater than 3" in diameter within the Karst Feature (wetland area between Devils Hole Restroom and the Devils Hole Campsite and within a distance of 50' around the vegetative buffer surrounding the Karst Feature).	Uplands- Cut & Haul away trees and vegetative debris. Stumps shall be cut to less than 6" above ground Wetlands- Cut and haul away Trees and vegetative Debris. Work is primarily located in sensitive wetland area. No heavy machinery or equipment will be permitted in these areas in wetland areas surrounding Devils Hole and Karst Feature. Primary debris removal method will require hand crews or use of grapple from roadway
14	Mabel Porter Road	Road Repairs	Complete Road repairs to 4700 Feet of Mable Porter Rd. (Labor and Approximately 3300 Tons of Material) *Repair washouts by pulling all available loose fill material from lower sections of roadway back into washout areas. *Install 4 water turn outs to redirect water from roadway as directed by District staff. * Provide, Install and Compact 300 Tons (Approximately 300 Cubic yards) of 1-3 Inch Lime Rock for repairing remaining washouts back to existing grade *Provide and Spread 3000 Tons (Approximately 3000 Cubic Yards) of 1-3 Inch Limerock along entire length of road section (4,700 feet) and spread 12' wide by 4" thick	Only loose fill material which is within lower portions of the roadway can be utilized to fill ruts in roadway. Do not enter natural areas or wetlands to obtain onsite fill materials. 1-3 inch limerock for repairing washout areas must be compacted before placing final 1-3 inch limerock layer.

Methods

- a) Debris Removal for Units 1-2, the Contractor will select the most efficient method or combination of methods for removing the trees and vegetative debris, including such techniques as cut and haul to an approved disposal or reuse facility; onsite air curtain incineration; pile and burn in areas that will not affect residual trees, onsite chipping with removal, onsite chipping/mulching with distribution of chips, etc. The special conditions below must be taken into consideration for all selected vegetative debris management methods.

NOTE Special Condition: These units may contain wetlands, steep slopes, floodplain areas, creek banks, wet areas, streams, ponds, and karst features (hereinafter referred to as “Sensitive Areas”) that are not specifically mapped or excluded from the Work Group maps. Because precise mapping of the Sensitive Areas is very difficult, the Work Groups have been delineated in a manner that attempts to include Sensitive Areas.

Conventional equipment used to perform debris cleanup would likely cause unacceptable impacts to these areas without the use of specialized materials and techniques. **Sensitive Areas shall not be impacted by the Work.** The Contractor has the option of performing debris cleanup within Sensitive Areas in a manner that does not impact the Sensitive Areas, or the Contractor may elect to not perform debris cleanup within Sensitive Areas. The acreage of Sensitive Areas not receiving debris cleanup services will be excluded from invoicing.

- b) For Units 3-13 The contractor will follow the specific instructions outlined in the Work Group/Unit Instructions. Any debris which has been specified to be removed, must be hauled and disposed of offsite at an appropriate disposal facility or recycled at the Contractors expense and will be included in the lump sum bid provided for the specific unit. **Pile burning will be prohibited in these units.**
- c) For Unit 14 (Mabel Porter Rd) The work specifications for road repairs are as follows:
The location, road length, material and tonnage needed for road repairs are listed in Table 1 (above) and in the Road Repair Exhibit Maps. The desired road dimension for spreading the rock are 12 feet wide by 4 inches thick unless otherwise specified in Table 1 (above).

If the project includes the installation of water bars/turnouts using native materials capped with the rock specified for the project area. Site managers will assist with designating the location of water bars/turnouts during the Work operations.

Alternative materials (ex.-different size rock or crushed concrete of appropriate size) can be utilized **only with the written approval of the Site Manager** if the availability of rock or site conditions require changes. Such approval shall be at the sole discretion of the Site Manager.

Road Project	Material	Material Tonnage	Work Specification	Project Cost
Mable Porter Rd.	1-3 inch Limerock	3300 Tons	See Special Instructions in Table 1 above	\$XXXX

Table 2

Work Group Name	Special Conditions
Ten Mile West Scott Rd	<ol style="list-style-type: none"> 1. Karst features (sinkholes, crevasses, exposed limerock, etc.) may be present within the Work Group and shall be protected during all operations. Debris shall be removed around and within these features using methods that do not result in damage to the karst features. 2. Contractor shall coordinate closely with the District's Site Manager when working close to the boundaries of the Work Group to ensure all Work is conducted on District land and no impacts occur on adjacent private lands as a result of the Work. Contractor shall not enter private property without permission from the landowner and shall not fell trees onto private property, buildings or fences. 3. See NOTE in Section 1.a. above concerning Sensitive Areas.
Econfina Creek Canoe Launch Pitt Springs Day Use Area Williford Springs Day Use Area Walsingham Bridge Rd (Including Walsingham Bridge, Longleaf, Seashell, and Devils Hole work groups)	<p>All or Portions of the Work located in these units are located within sensitive wetland areas. The use of heavy equipment will be prohibited. For units where vegetative debris removal is specified in these areas, hand removal or removal by a grapple truck adjacent to the work site will be the only acceptable methods for removing the debris in these units. Other acceptable methods may be approved on a case by case basis as determined by the district.</p>

Special Conditions (All Work Groups)

1. All specified vegetative debris in the project area shall be processed according to the Work operation instructions provided in Table 1 above.
2. The Contractor must take care not to damage fences, overhead and underground utilities, gates, and any other items of value owned by the District or neighboring property owners. Contractor will be held responsible for all damages.
3. The Contractor shall not bury onsite any debris, garbage, trash, or other materials resulting from or associated with the Work. Ash from burning operations may remain onsite, provided that it is not in piles or disposed of in a manner that would prevent vegetation from growing.
4. Work will occur only during daylight hours, unless otherwise approved by District.
5. The Work area is located on public lands within the Econfina Creek WMA. The Contractor shall be responsible for posting appropriate construction site closure and "No Trespassing" signs at appropriate locations within the Work areas as needed, which shall be removed

after completion of the Work. The Contractor may utilize any existing District gates and may place temporary gates, fences and/or barricades, if needed. Contractor may place their own padlocks on District gate(s) and shall ensure that the District's locks and the locks of other authorized users on the gates remain functional for access by District staff and other authorized users. The Contractor shall be responsible for all site and equipment security and may place a temporary residence (RV/Motorhome, etc.) for security purposes and/or construction trailer, equipment storage lockers, etc., as needed, within an area approved by the District's Site Manager. There is no electricity, running water, or sewage disposal within the Work area. Trespassing, theft, vandalism and other illegal activities shall be immediately reported to local law enforcement authorities.

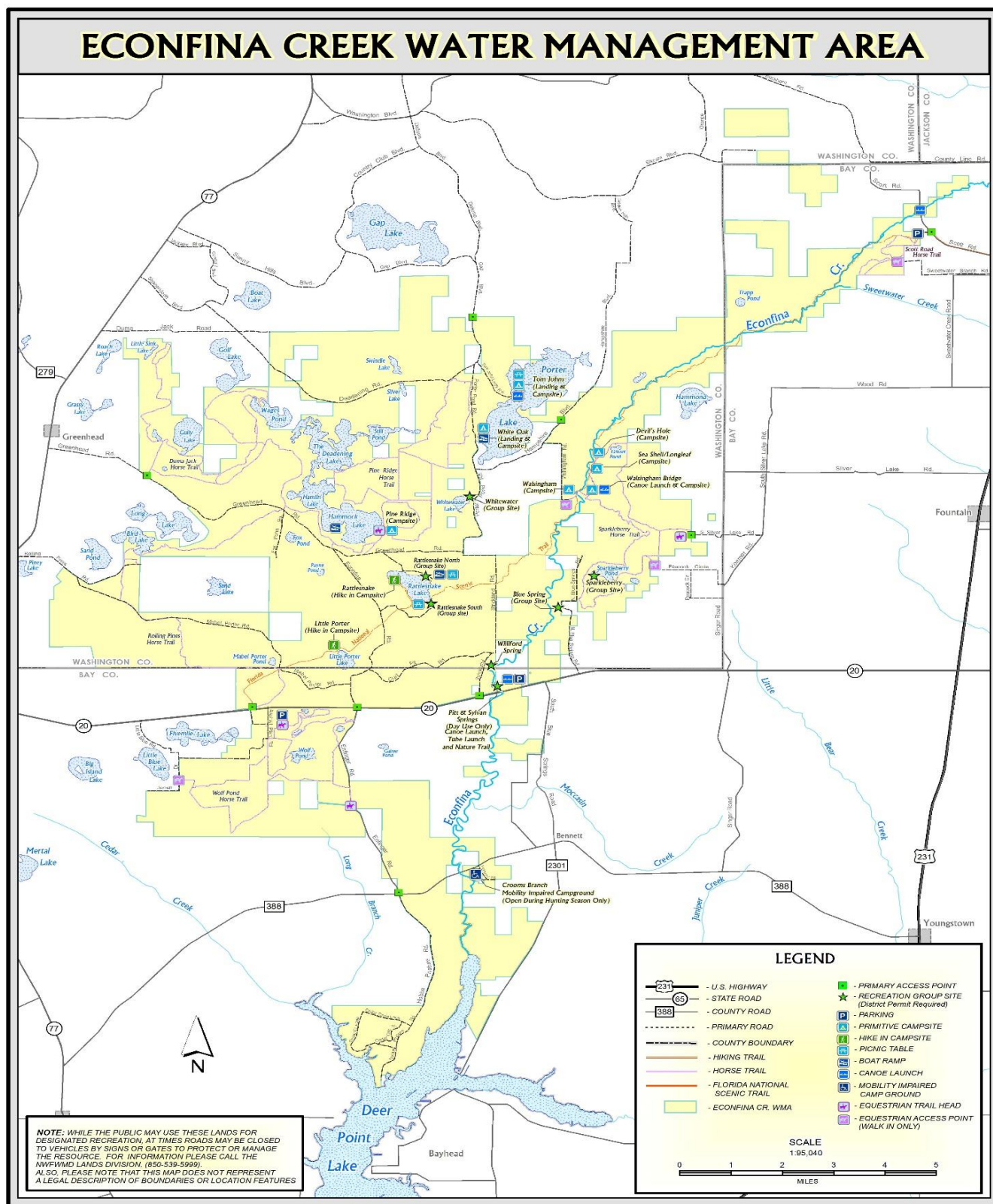
6. The Contractor must exercise care to prevent damage to all residual live trees located within the project areas of Units 1 & 2. Special care shall be given to prevent any damage to any trees not designated for removal by the District. To prevent soil compaction and damage to residual tree root systems, heavy equipment shall not enter the dripline of the residual trees except when necessary to remove targeted trees and debris. Standing trees not intended for removal will not be used in any manner to facilitate the Contractor's operations.
7. Mulch debris remaining onsite for Units 1,2 only shall not be piled nor left gathered around or near the base of remaining live trees.
8. Stumps shall be cut as close to the ground as possible and shall not be higher than six inches (6") above the ground in upland areas and 1' above ground for wetland areas except where otherwise authorized by the District. Felled trees with root balls attached shall be cut as close to the root ball as possible.
9. All "lodged" trees shall be freed and removed.
10. Skidding trees down existing roads and fire lines is encouraged. However, the creation of barren areas or "skid trails" through repeated skidding across the same ground is discouraged.
11. The District retains the right to close down operations in inclement weather if soil disturbance in the project area or damage to roads is deemed by the District to be too severe.
12. The Contractor shall adhere to and implement all applicable federal, state, and local environmental laws and regulations as well as applicable best management practices (BMPs) for silvicultural operations as outlined in the latest version of the Florida Silviculture Best Management Practices Manual. The Contractor is responsible for securing any forestry authorizations that may be required under Chapter 40A-44, Florida Administrative Code,

and/or any other local, state, or federal permit or authorization that may be required to conduct the vegetation and debris removal operations and shall remain in full compliance with all governing regulations during the course of the Work. All burning operations shall be managed by a burn manager certified by the Florida Forest Service, shall be authorized as certified burns by the Florida Forest Service and shall be performed in accordance with Chapter 590, Florida Statutes and Chapters 62-256 and 51-2, FAC.

13. The Contractor shall accept roads in their present condition and accept responsibility and expenses for any improvements in roads necessary to cut, haul, manage, and/or remove the designated vegetation. During operations the Contractor shall maintain all roads in a usable condition, suitable for the vehicular traffic to which the road is normally subjected. The Contractor is solely responsible for maintaining the roads and making them serviceable prior to use, as approved by the District. Ruts on roads will be back bladed by the Contractor upon completion of the Work and when requested by the District during the Work. The District retains the right to close down the operations in inclement weather if damage to roads or the project area is deemed by the District as becoming too severe.
14. Maintenance of equipment may be conducted on-site only if all product containers, fluids and waste, including used oil, hydraulic oil and all other disposable products, are properly captured and contained, and removed from the site for proper disposal. Petroleum-based fluid spills smaller than 5 (five) gallons that occur from equipment must also be reported to the District, treated with appropriate absorbent and/or other neutralizing agent, and followed by removal and proper disposal of affected soils. Petroleum-based fluid spills 5 (five) gallons or greater in a concentrated spot shall be reported to the District and cleaned up properly. Spills that are 25 gallons or greater must be reported to the Florida Department of Environmental Protection ("DEP") with a field inspection made by DEP, and the Contractor must handle such spills according to DEP instructions. ***Spills must not be buried with soil and/or sand and left untreated.*** Equipment that constantly leaks fluid and/or causes other problems on site shall be shut down by a District representative and the Contractor may be required to remove the problem equipment from the site.
15. The Contractor shall be responsible for seeing that the Work area shall remain free from any litter such as oil cans, drums, paper, foam products and other refuse.
16. The Contractor shall provide at least one portable toilet for use by its employees and subcontractors and shall ensure that the portable toilet is serviced on a weekly or more frequent basis.
17. To minimize the possibility of transporting and spreading exotic plant species, equipment must be cleaned of all dirt and plant material prior to moving onto District land.

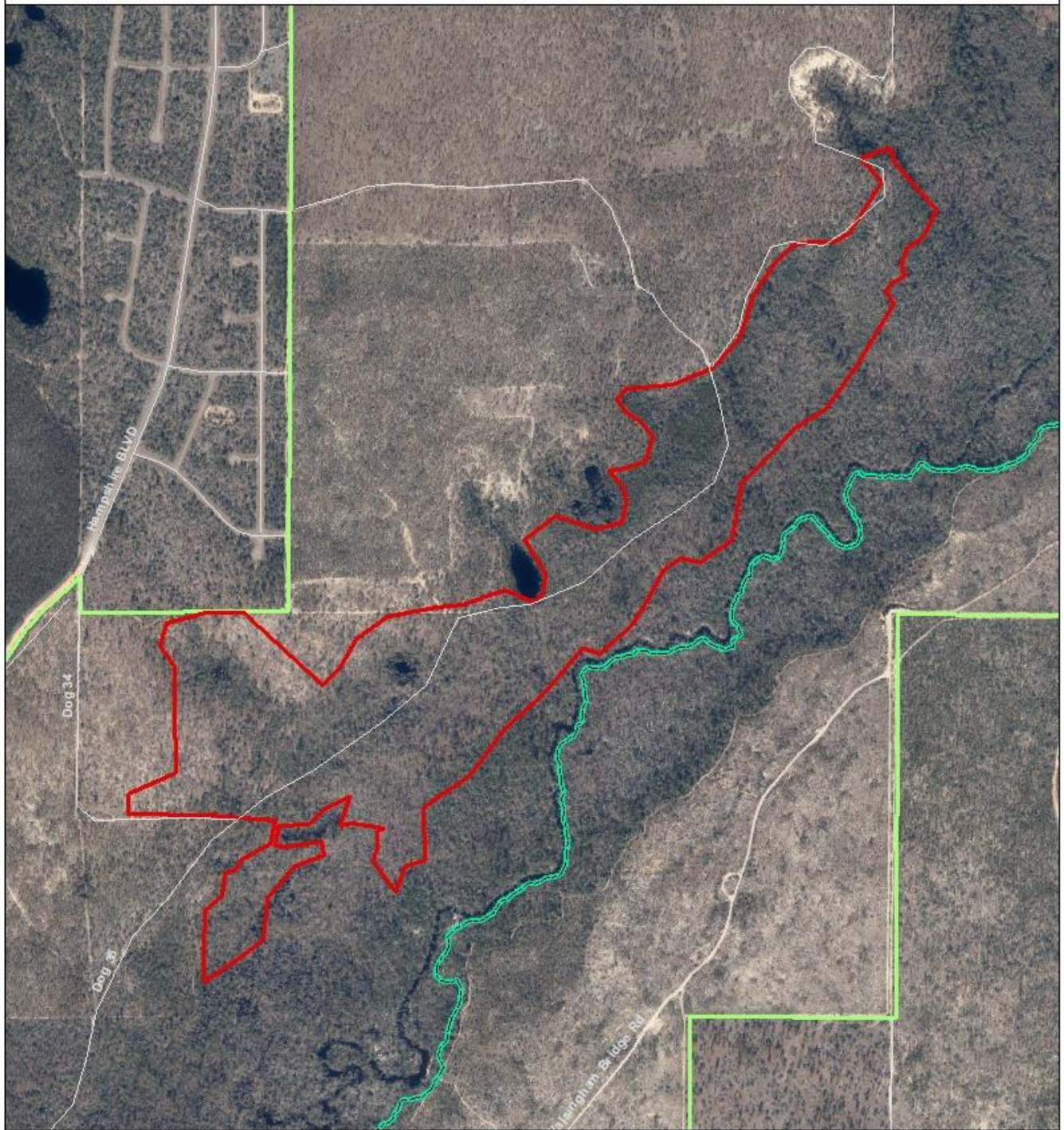
18. If warranted by the specific operations employed by the Contractor, the Contractor shall provide and maintain a minimum of two (2) signs stating: "Trucks Entering and Leaving Highway" (or similar acceptable language) and place the signs in appropriate locations.
19. Gopher tortoises are a protected species and may be present within the project areas and in other areas throughout the property. Work crews must prevent impacts to tortoises and their burrows by avoiding burrow aprons and tunnels and watching out for individual tortoises during all operations. Gopher tortoises shall not be injured, captured, moved or removed from District project areas.
20. For Units 1 & 2- Project progress shall be measured on a per-acre basis and invoices shall be approved only for Work completed and measured by District staff using a GPS unit to determine and delineate acreage completed in accordance with the specifications contained herein. The Vegetative Debris Management Cost Per Acre is inclusive of all costs affiliated with completing the Work, including but not limited to employee pay, benefit costs, insurance, bonds, fuel, vehicles, transportation, mobilization and demobilization, equipment, communication equipment, GPS units, cameras, PPE, power tools, hand tools, and any other costs necessary for the contractor to meet project specifications. Any needed fireline preparation and rehabilitation and all planning, permitting, administrative, contract management, and invoicing costs are included.

Exhibit Maps



The above location map will be utilized as a general location map as well as location map for Work Group/Units 3-9. These units have specific locations of the work within the Scope of Work in Table 1.

Ten Mile West



- Cleanup Area
- District Lands
- Florida National Scenic Trail

Ten Mile West
Hurricane Michael Year 2 Debris Cleanup Project
Washington County, Florida
135 Acres

0 0.075 0.15 0.3 Miles



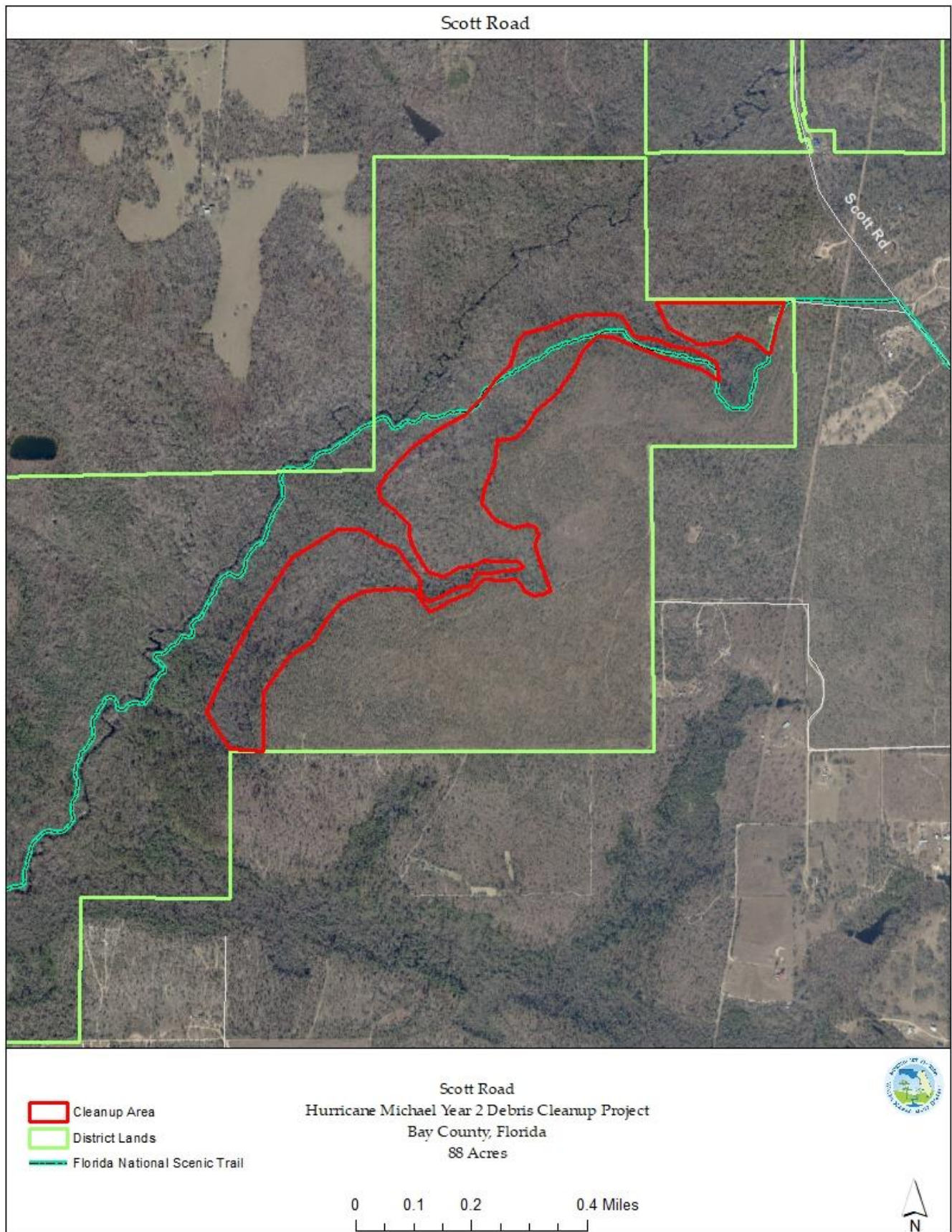


Exhibit Map 10

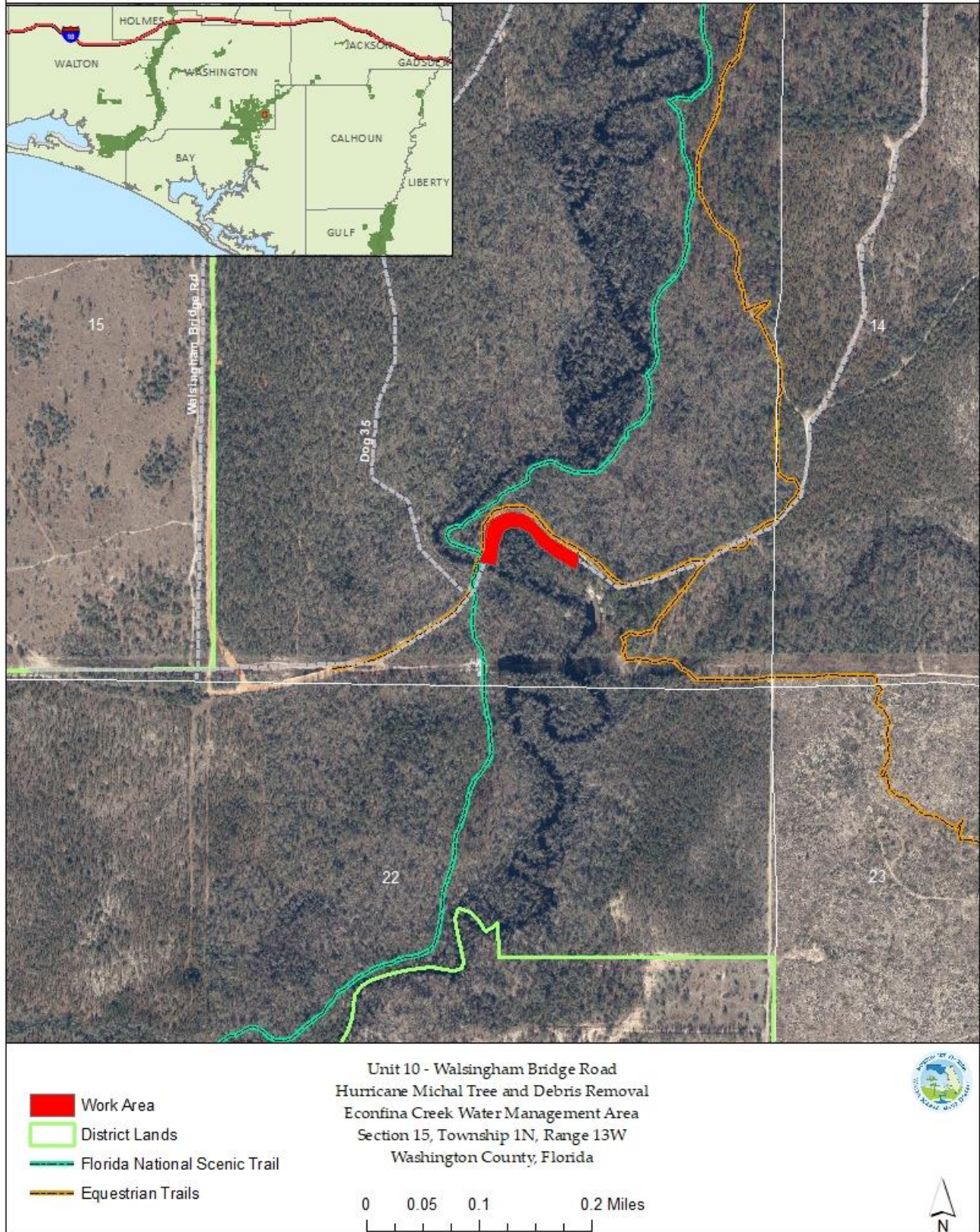


Exhibit Map 11

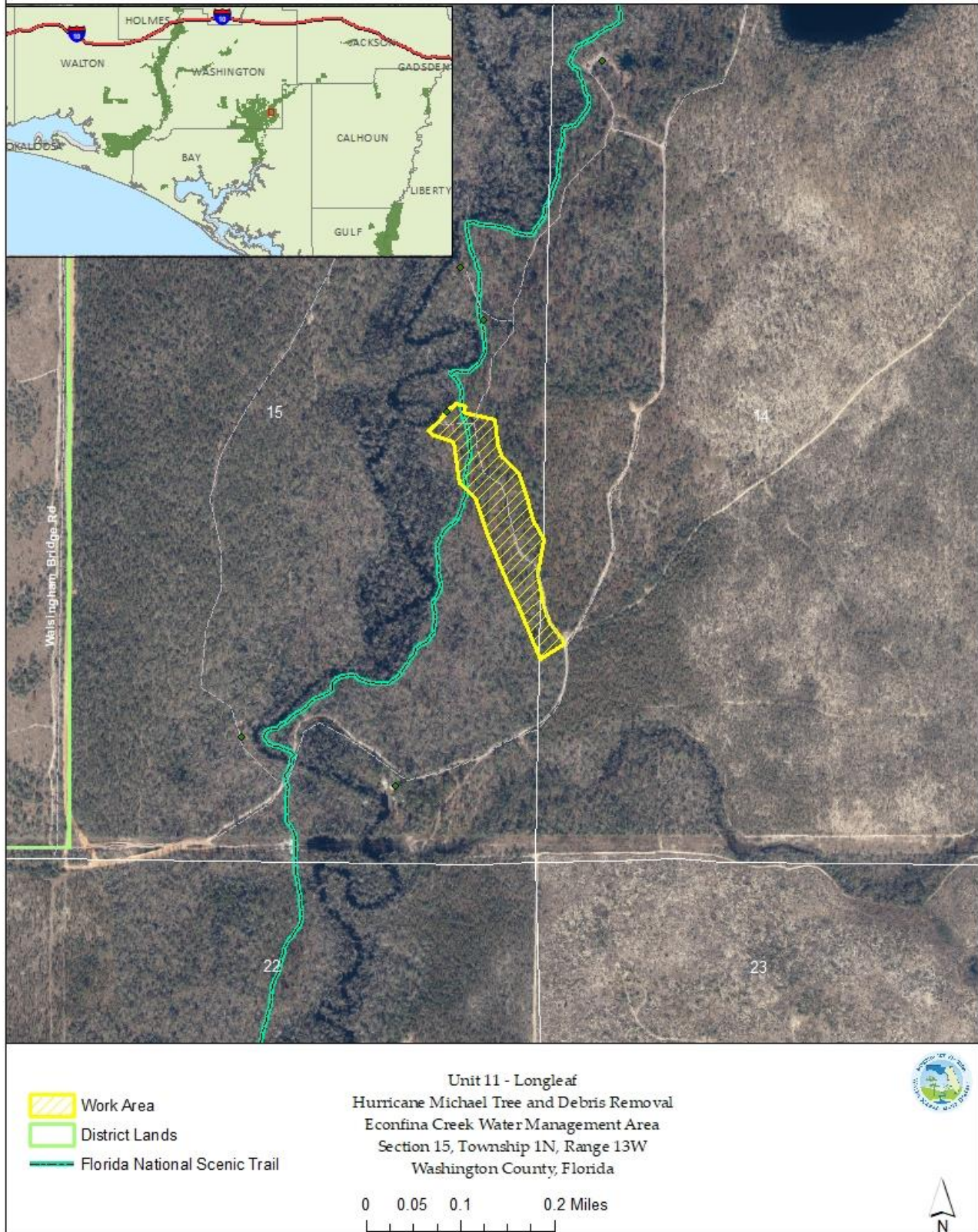


Exhibit Map 12

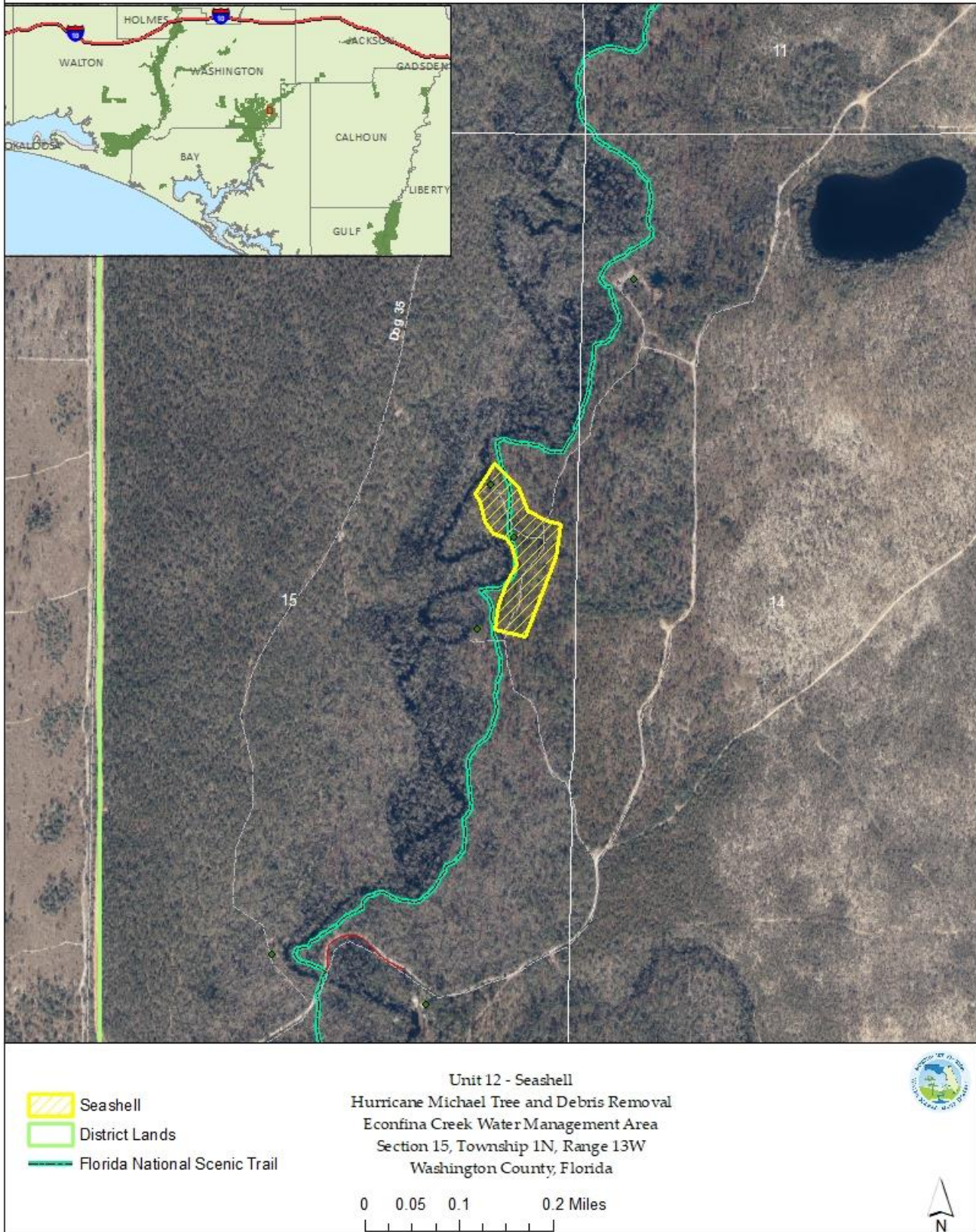


Exhibit Map 13

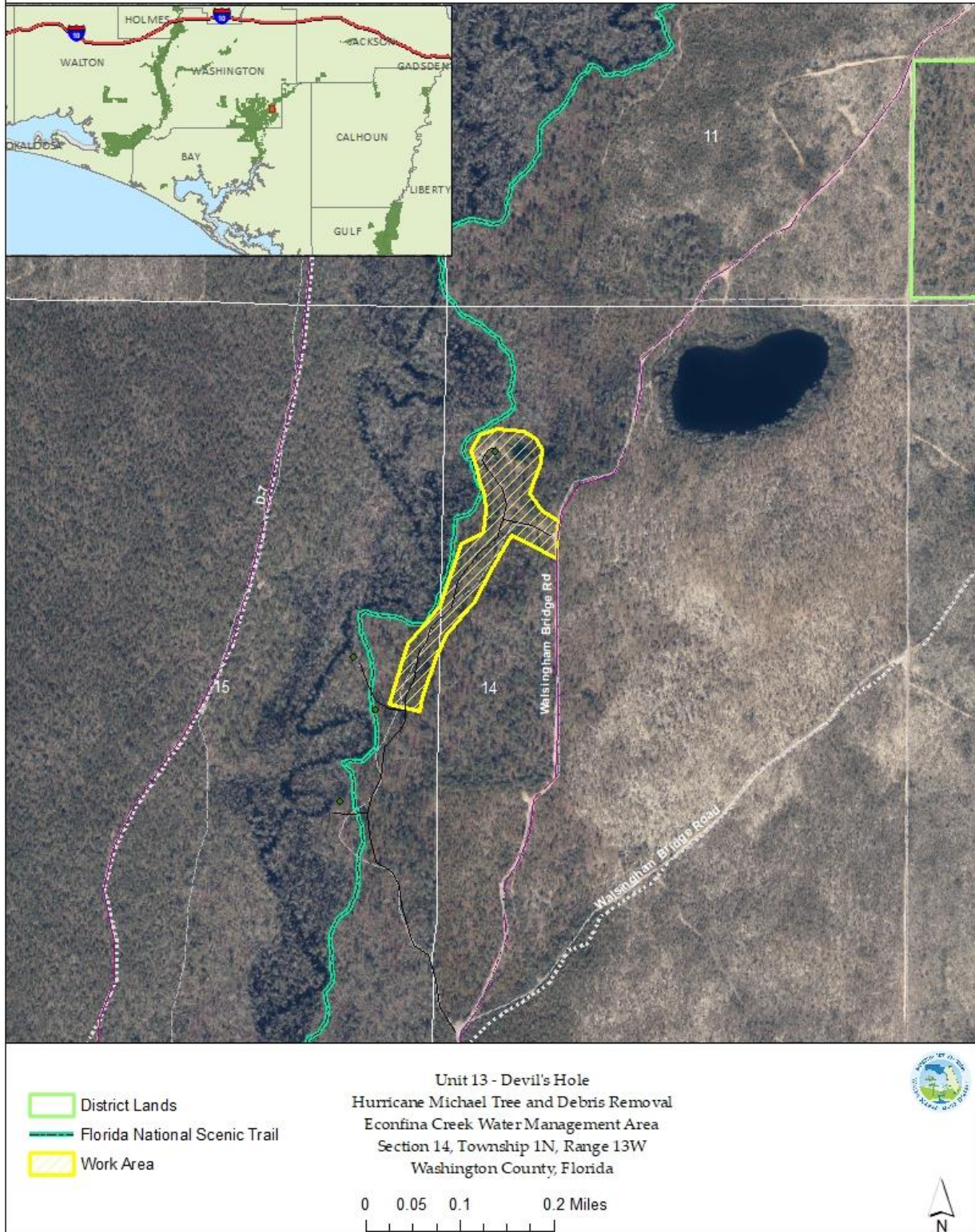


Exhibit Map 1

