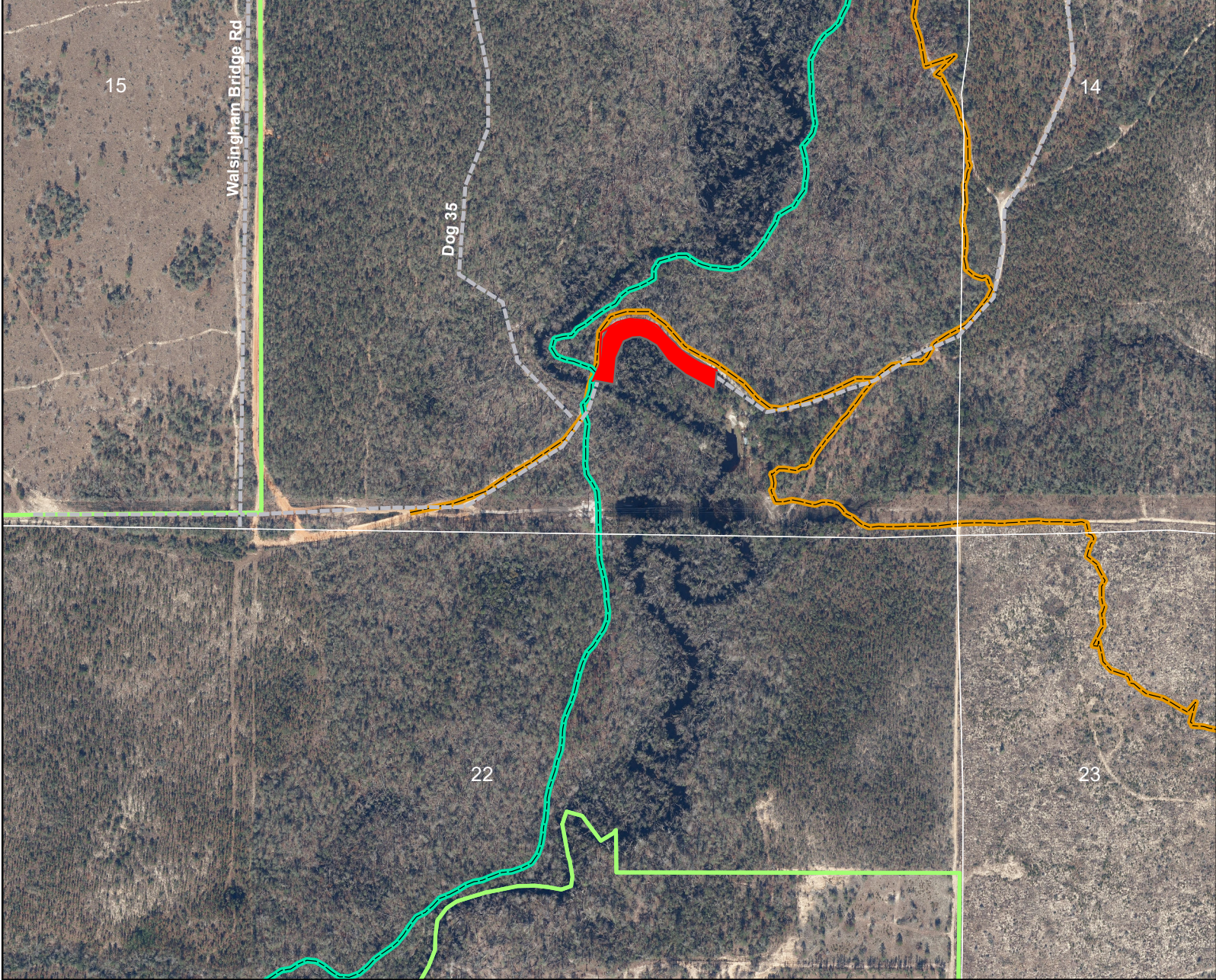


# Exhibit Map 10



-  Work Area
-  District Lands
-  Florida National Scenic Trail
-  Equestrian Trails

Unit 10 - Walsingham Bridge Road  
Hurricane Michal Tree and Debris Removal  
Econfina Creek Water Management Area  
Section 15, Township 1N, Range 13W  
Washington County, Florida

