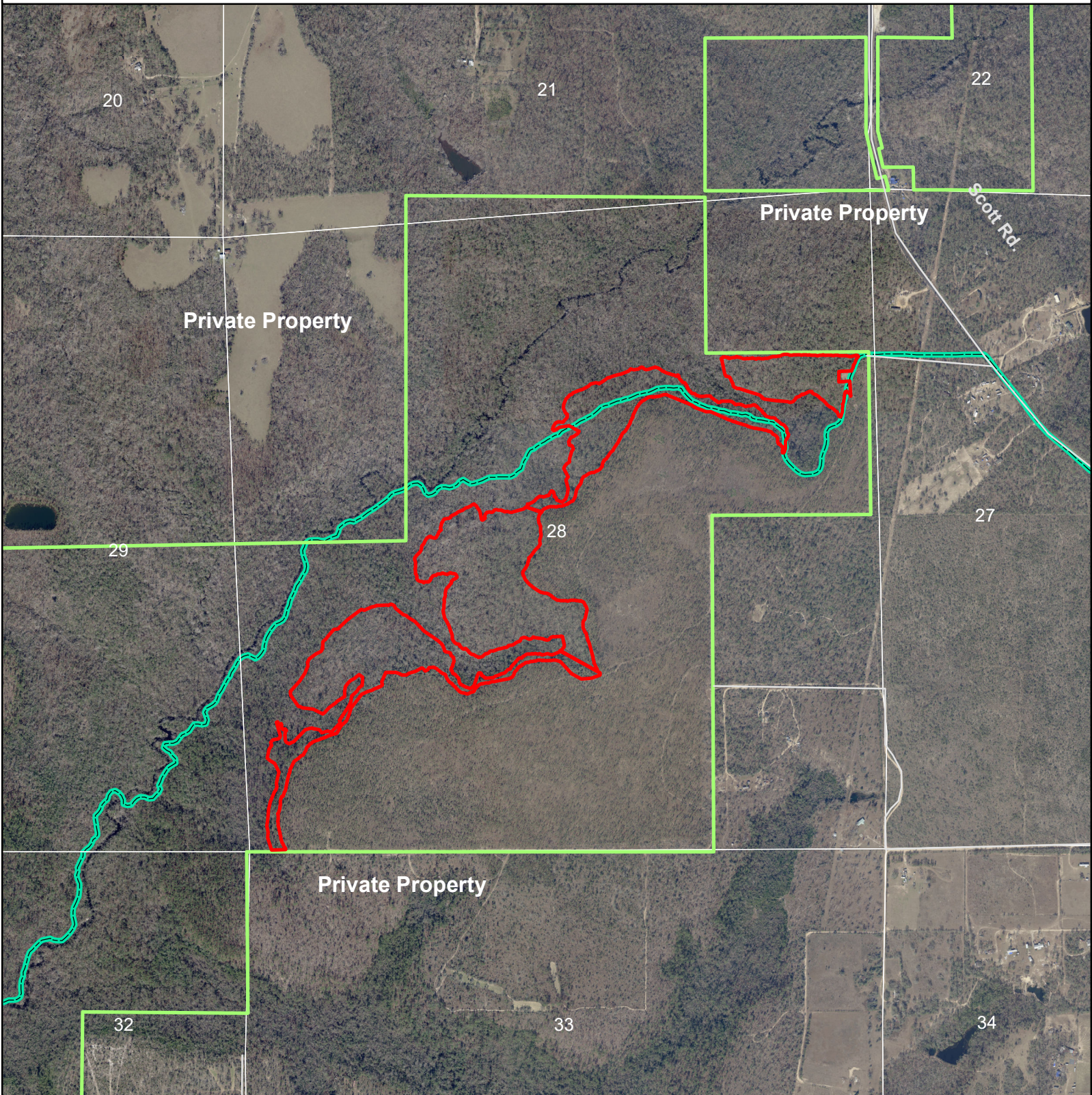





Exhibit Map 12



2023 Reforestation Project - Stand 18
Econfina Creek Water Management Area
Sections 28, T2N, R12W
Bay County, Florida
Longleaf Reforestation @ 726 Trees Per Acre
6 X 10 Spacing
68 Acres

-  Reforestation Area
-  District Lands
-  Florida National Scenic Trail

0 0.1 0.2 0.4 Miles

