

Sand Hill Lakes Mitigation Bank Combined DEP/USACE Seventeenth Annual Report



FDEP Permit # 0227351-001 Issued 9/6/2005, Washington County

**Northwest Florida Water Management District
Submitted by David Clayton
In support of Specific Conditions 26 and 28**

Executive Summary

The Sand Hill Lakes Mitigation Bank (SHLMB) consists of approximately 2,155 acres in southern Washington County in the Sand Hill Lakes region of the Florida Panhandle. The SHLMB is located just west of the intersection of State Road (SR) 77 and SR 279 within Township 1 North, Range 14 & 15 West. The site contains 850 acres of wetlands, 155 acres of natural lakes and ponds, and 1,150 acres of upland communities. The Florida Department of Environmental Protection (FDEP) permit was issued September 5, 2005, and US Army Corps of Engineers (USACE) permit were approved on May 16, 2006. This is the seventeenth annual combined FDEP and USACE report for the SHLMB, and it is written in accordance with Specific Condition 26 and 28. All restoration activities described in the Mitigation Bank Permit have been implemented and restored habitats are improving. Interim success criteria have been met since June 2010.

Fire was reintroduced to the SHLMB in the fall of 2004, and warm season burns were implemented in 2007. Nine burn cycles have been completed at the SHLMB. The sandhills are burned on a two-year rotation while the hydric pine flatwood community has been burned annually since 2019. Frequent fires have greatly improved the quality and diversity within the pyrogenic communities. The hydrologic restoration was completed by January 2008 and included the removal of two fill-roads, installation of three railcar bridges, replacement of two culverts and dams, and the remediation of ten erosion sites. The hydrologic restoration continues to function as designed.

Hydric pine flatwoods restoration activities have been implemented on 163.88 acres. Shrub reduction was completed in August 2008. Herbicide treatments were conducted for three years and nuisance shrub cover have been maintained at less than five percent cover. The hydric pine flatwoods were planted with 1.18 million wiregrass plants, 182,700 cut over muhly grass, 122,600 toothache grass and 72,600 mixed hydric pine flatwoods wildflowers. An additional 37,500 plugs of toothache grass and gulf muhly grass were planted in 2023 adjacent to Dry Pond. All plantings were conducted in accordance with Specific Condition 10 and Appendix D. Since 2019 annual burns have been conducted for restored hydric pine flatwoods. Sampling in 2020 observed an average of two wiregrass seedlings per meter square within the restored hydric flatwoods. In 2022, a total of 112 species were observed within the hydric pine flatwoods restoration on the west side of Dry Pond during the annual monitoring. Quantitative transect data within the hydric pine flatwoods restoration had an average herbaceous vegetation cover of 91 percent. This is a significant improvement from two herbaceous species and 98 percent shrub cover observed during the baseline documentation.

All upland restoration activities described in the permit have been completed since 2010 and include removal of pine plantations, eradication of shrub species, replanting with longleaf pine, wiregrass, and implementation of warm season burns on a two-year interval. A total of 646 acres of sandhill were enhanced by planting longleaf pine at a density of 436 trees per acre. Currently, average planted longleaf pine densities remain near or below 200 trees per acre. A total of 454.5 acres of sandhill understory was restored by planting wiregrass on three-foot centers. In 2017, 32,000 plants from 20 sandhill species grown from seed collected at the SHLMB were installed within 37 acres of sandhill restoration adjacent to the entrance. Sampling in 2020 observed an average of four wiregrass seedlings per meter square within sandhills restored from sand pine plantation. This recruitment will help to increase the wiregrass coverage within the sandhill restoration. In 2021, eight sandhill species (145,450 plugs) were planted in the sandhill adjacent to Little Deep Edge Pond. It is hoped that these species will help augment the

developing sandhill diversity. The restored sandhills continue to thrive. Surveys of nuisance species (flora and fauna) have been conducted throughout the past seventeen years.

Feral hog damage was not observed 2022. The dates of annual sampling for the 2022 annual report were October 11, 12, 24, 25 and November 7, 8, 28, 29, and 30. The number of species observed continues to increase as habitats improve from implementation of restoration activities.

Table of Contents

Executive Summary.....	1
Introduction	5
Bank Establishment and Mitigation Work Schedule.....	6
Hydrologic Enhancements	9
Fire Management.....	11
Exotic Fauna and Vegetation	12
Monthly Water Gage Readings.....	13
Sandhill Restoration.....	16
Hydric Pine Flatwoods Restoration.....	16
Annual Monitoring.....	19
Quantitative Monitoring.....	19
Qualitative Monitoring.....	35
Figure 1. Location Map (2005 FDEP Permit)	5
Figure 2. SHLMB Boundary Map	6
Figure 3. Structures Approved for Construction at the SHLMB (2005 FDEP Permit).....	9
Figure 4. Erosion Stabilization Areas Restored at the SHLMB	10
Figure 5. Proposed Burn Cycles.....	11
Figure 6. 2019 Burns Conducted at the SHLMB.....	12
Figure 7. The Ten Staff Gage Locations at the SHLMB.....	15
Figure 8. Hydric Pine Flatwoods Restoration Areas (163.88 Acres).....	18
Figure 9. Monitoring Locations	20
Figure 10. Transect 1: Species cover and occurrence (Sandhill Restoration).....	21
Figure 11. Transect 2: Sand pine plantation restored to sandhill.....	22
Figure 12. Transect 4: Sand pine plantation restored to sandhill	23
Figure 13. Planted longleaf pine seedlings (Transect 1)	24
Figure 14. Planted longleaf pine seedlings (Transect 2)	24
Figure 15. Planted longleaf pine seedlings (Transect 4)	24
Figure 16. Transect 3: Species cover and occurrence (Sandhill Enhancement)	26
Figure 17. Transect 5: Species cover and occurrence (Sandhill Enhancement)	27
Figure 18. Planted longleaf pine seedlings (Transect 3)	28
Figure 19. Planted longleaf pine seedlings (Transect 5)	28
Figure 20. Transect 8: Species cover and occurrence	30
Figure 21. Transect 6. Species cover and occurrence (Hydric Pine Flatwoods Restoration)	32
Figure 22. Transect 7. Species cover and occurrence (Hydric Pine Flatwoods)	33
Table 1. Restoration Work Schedule	7
Table 2. Water gauge data for the SHLMB	14
Table 3. Transect 1 Species cover and occurrence (Sandhill Restoration)	21
Table 4. Transect 2 Species cover and occurrence (Sandhill Restoration)	21
Table 5. Transect 4 Species cover and occurrence (Sandhill Restoration)	24
Table 6. Transect 3: Species Cover and Occurrence (Sandhill Enhancement)	25
Table 7. Transect 5: Species Cover and Occurrence (Sandhill Enhancement)	27

Table 8. Transect 8. Species Cover and Occurrence (Hydric Pine Restoration) 29
Table 9. Transect 6. Species Cover and Occurrence (Hydric Pine Flatwoods) 31
Table 10. Transect 7. Species and Occurrence (Hydric Pine Flatwoods Restoration) 32
Table 11. Transect 9. Species and Occurrence (Hydric Pine Flatwoods Restoration) 37

Introduction

The Sand Hill Lakes Mitigation Bank (SHLMB) consists of 2,155 acres in southern Washington County in the Sand Hill Lakes region of the Florida Panhandle (Figure 1, Figure 2). It is located just west of the intersection of SR77 and SR 279, and is within Township 1 North, Range 14 & 15 West. The property contains 850 acres of wetlands, including high quality cypress sloughs and strands, hydric pine flatwoods restoration, bayheads, seepage slopes, and approximately 155 acres of natural solution ponds and shallow, gently sloped lakes connected by streams and ditches. The uplands consist of 1,150 acres of hardwood oak communities and sandhill enhancement and restored sandhill communities (Figure 2).

The SHLMB occurs on the divide between the Choctawhatchee River and St. Andrew Bay watersheds. The majority of the SHLMB occurs within the surface headwaters of Pine Log Creek, which flows westerly and southwesterly to Pine Log State Forest and ultimately to the Choctawhatchee River and Bay. However, due to the karst nature of the Sand Hill Lakes region, the SHLMB also occurs within a recharge area for Econfina Creek, which, via Deer Point Lake Reservoir, is the primary water supply for Bay County. The creek ultimately discharges to St. Andrew Bay.

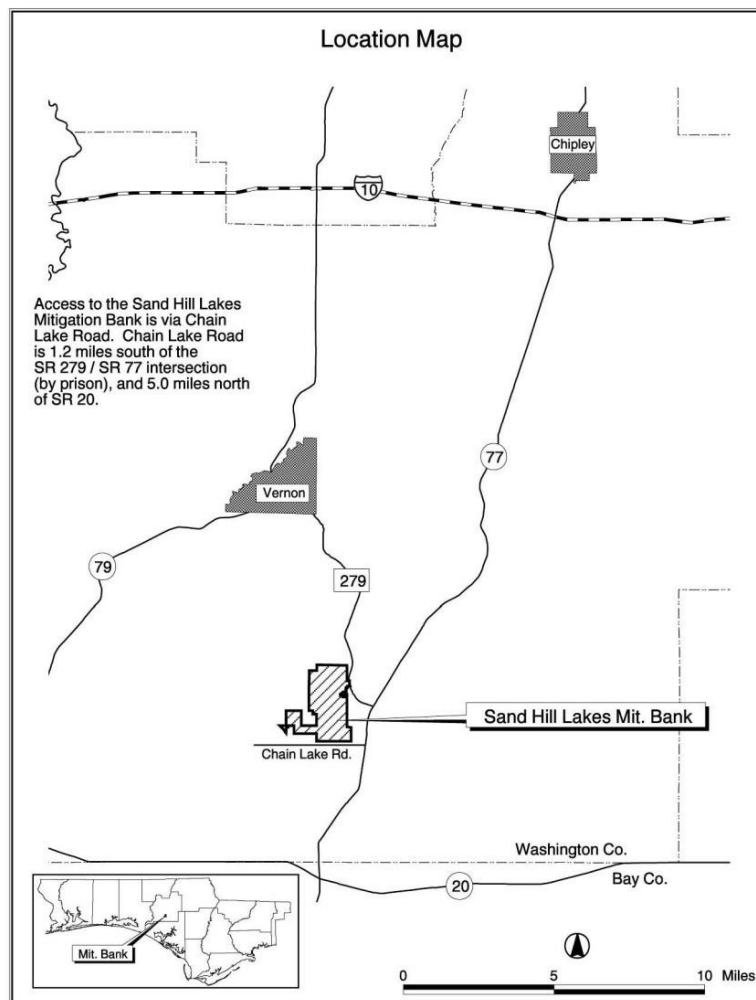


Figure 1. Location Map (2005 FDEP Permit)

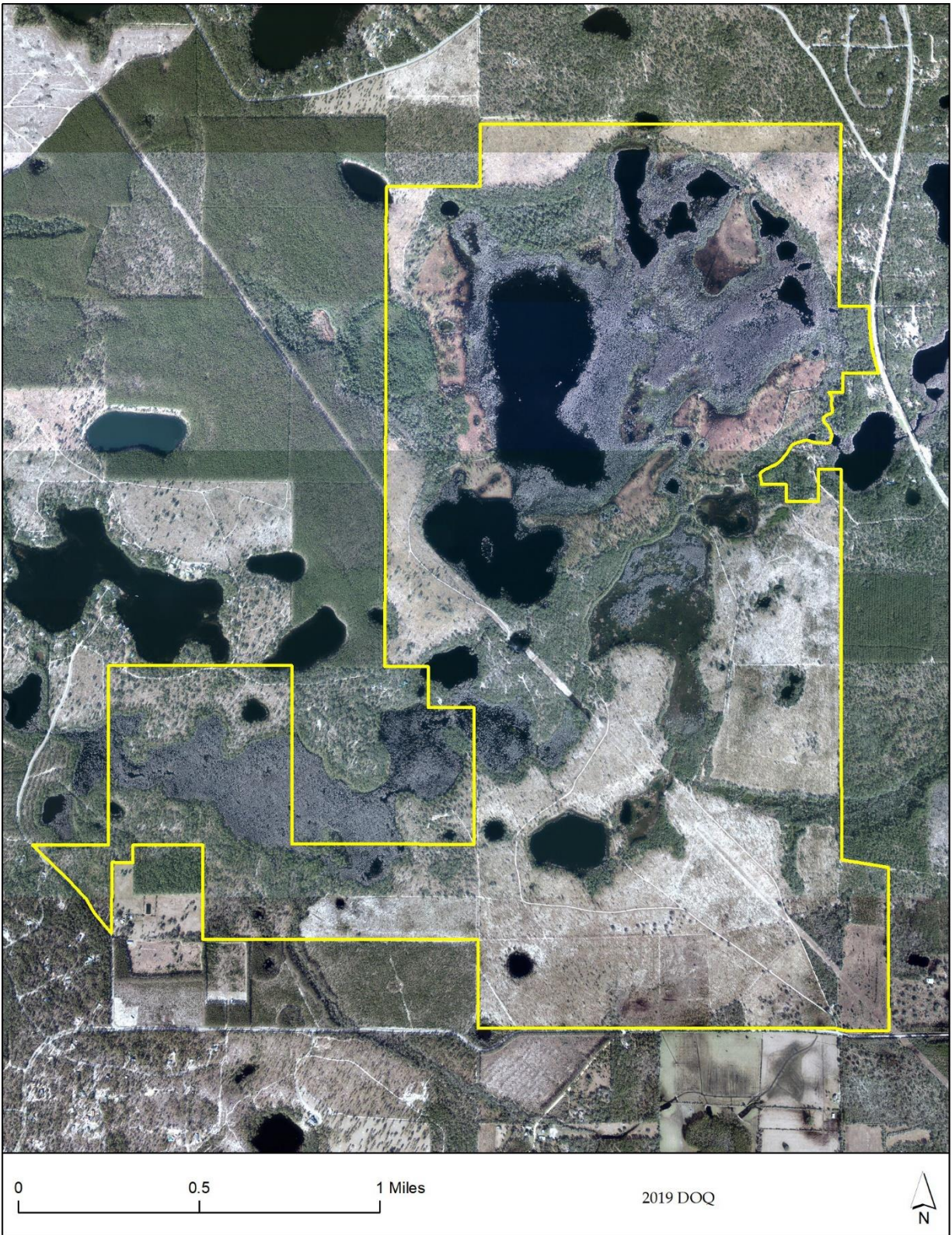


Figure 2. SHLMB Boundary Map

Bank Establishment and Mitigation Work Schedule

Specific Conditions 1-5, 7, 8, and 14

The FDEP permit for the SHLMB was issued on September 5, 2005 and the USACE Mitigation Banking Instrument (MBI) was approved on May 16, 2006. This is the seventeenth annual combined FDEP and USACE report for the SHLMB. Construction activities were initiated in July 2006 and completed by January 2008. All restoration activities described in the Mitigation Bank permit have been completed and restored habitats are improving with regular burn intervals. Interim success criteria have been met since 2010. The mitigation work schedule is included below (Table 1).

Table 1. Restoration Work Schedule

Restoration Work Activity	Estimated Completion Date
Conservation easement, QMS	Completed 3/2006
Fencing and signage	Completed 3/2005
Site security / law enforcement / internal gating / road closures	Ongoing
Stabilization of 10 erosion sites	Completed 3/2007
Hydrologic enhancements	
- Replacement of Black Pond dam	Initiated 10/2007 Completed 1/2008
- Removal of Dykes Mill Pond dam	Initiated 7/2006 Completed 8/2006
- Removal of road fill at (3) sites	Initiated 7/2006 Completed 3/2007
- Construction of 2 bridges and replacement of 3 culverts	Initiated 7/2006 Completed 3/2007
Removal of pine plantation and thinning of slash pine	Initiated 7/2007 Completed 10/2007 Additional thinning of Management Unit 3 to reduce pine densities to <200 ac (August 2012) Sand pine seedlings were eradicated from 158 acres former sand pine plantation restored to sand hills in August 2012.
Removal of oak overgrowth and replanting with longleaf pine	Completed: Oak removed 2005/2006, additional oak removal (ULW, 6/2009) 150 acres oak and shrub reduction, 12/2010 Pine planted 2005 and 12/2007. Additional hardwood removal in 2009 and 2011. Additional hardwood removal was conducted for 40 acres in the sand hill restoration in August 2012.
80 percent completion of initial growing season and fuel reduction fires in areas to be maintained as oak / pine community	Completed 12/2005
Initial thinning, roller chopping, and fuel reduction fires in hydric pine	Completed Initial burns 8/2005 Completed required shrub reduction (Gyro-Trac) 082008 Completed Pine thinning 10/2007 Fuel reduction burns following timbering harvesting and Gyro-Trac completed 12/2008

Restoration Work Activity	Estimated Completion Date
<p>Supplemental wiregrass seeding if necessitated by onsite conditions.</p> <p>To date within the 163.88 acres of hydric pine flatwoods restoration site, 1.18 million wiregrass plugs, 182,700 cut over muhly grass, 122,600 tooth ache grass and 72,600 mixed hydric pine flatwoods wildflowers have been established in the hydric pine flatwoods restoration area in accordance with Specific Condition 10.</p> <p>Road fill removal areas were planted with sapling cypress and black gum and shrub species in 2009 in accordance with Specific Condition 10.</p> <p>A total of 646 acres of sandhill and sandhill restoration were planted with longleaf pine at a rate of 436 trees per acre in accordance with Specific Condition 10.</p> <p>A total of 454.5 acres of sandhill understory was restored by planting wiregrass on 3' centers (2,199,780 plants).</p> <p>In 2017, 32,000 plants from 20 sandhill species grown from seed collected at the SHLMB were installed in sandhill restoration.</p> <p>In 2021, 12 acres of sandhill restoration east of Dykes Mill Pond were planted with 8 sandhill species on 6' centers</p>	<p>2008/2012 Planting</p> <p>*Supplemental planting maybe added in the future.</p>
Installation of water level gages	Completed 12/2005
Baseline assessments of vegetation, First Annual Report	Completed /2006
Fire Management / Monitoring Year 1 / 2 nd Annual Report	Completed 2007
Fire Management / Monitoring Year 2/ 3 rd Annual Report	Completed 2008
Fire Management / Monitoring Year 3 / 4 th Annual Report	Completed 2009
Fire Management / Monitoring Year 4 / 5 th Annual Report	Completed 2010
Fire Management / Monitoring Year 5 / 6 th Annual Report	Completed 2011
Fire Management / Monitoring Year 6 / 7 th Annual Report	Completed 2012
Fire Management / Monitoring Year 7 / 8 th Annual Report	Completed 2013
Fire Management / Monitoring Year 8 / 9 th Annual Report	Completed 2014
Fire Management / Monitoring Year 9/ 10 th Annual Report	Completed 2015
Fire Management / Monitoring Year 10 /11 th Annual Report	Completed 2017
Fire Management / Monitoring Year 11 /12 th Annual Report	Completed 2018
Fire Management / Monitoring Year 12 /13 th Annual Report	Completed 2019
Fire Management / Monitoring Year 13 /14 th Annual Report	Completed 2020
Fire Management / Monitoring Year 14 /15 th Annual Report	Completed 2021
Fire Management/ Monitoring Year 15 / 16 TH Annual Report	Completed 2022
Fire Management/ Monitoring Year 16 / 17 TH Annual Report	Completed 2023
Perpetual Ecological Management	Year 21+

Hydrologic Enhancements

Specific Condition 12

Hydrologic enhancements included the removal of two fill-road crossings, installation of bridges at three crossings and two culverts and the removal or replacement of two failing water control structures, the remediation of ten erosion areas, and the stabilization of a boat launch (Figures 3 and 4). All water control structures, culverts and road removals and erosion stabilization areas continue to function as designed.

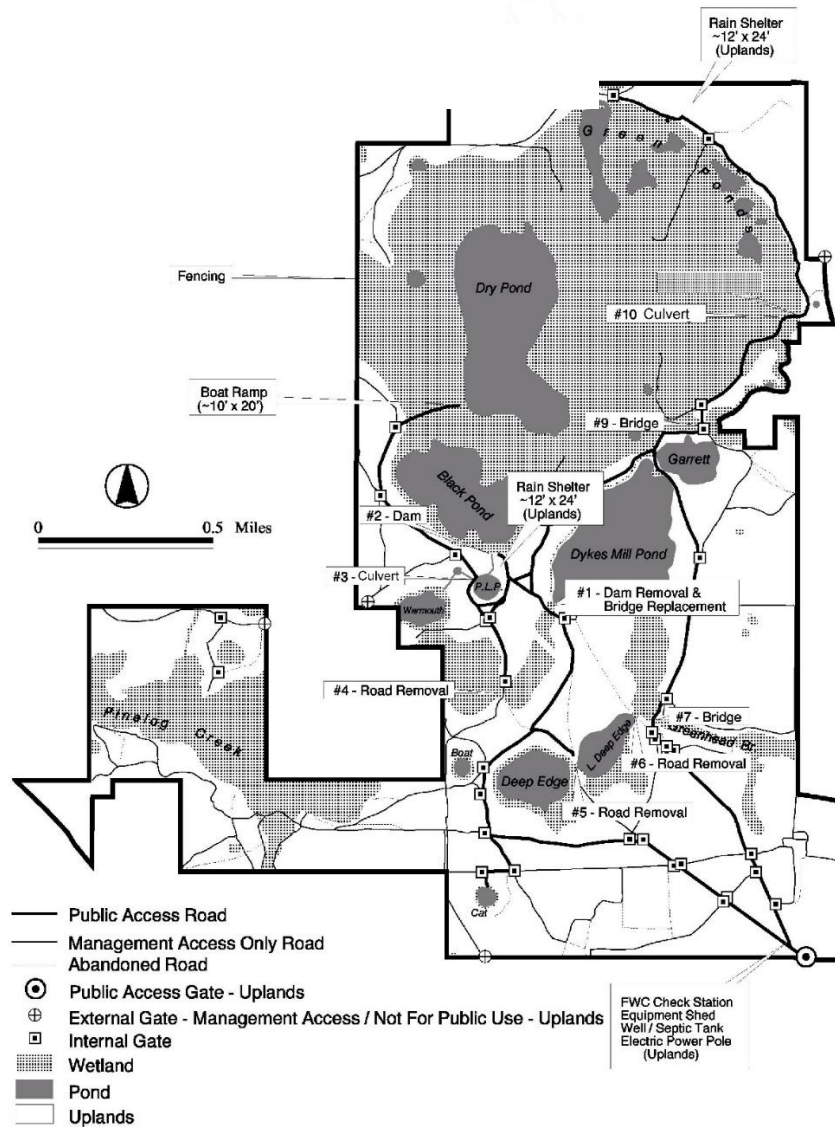
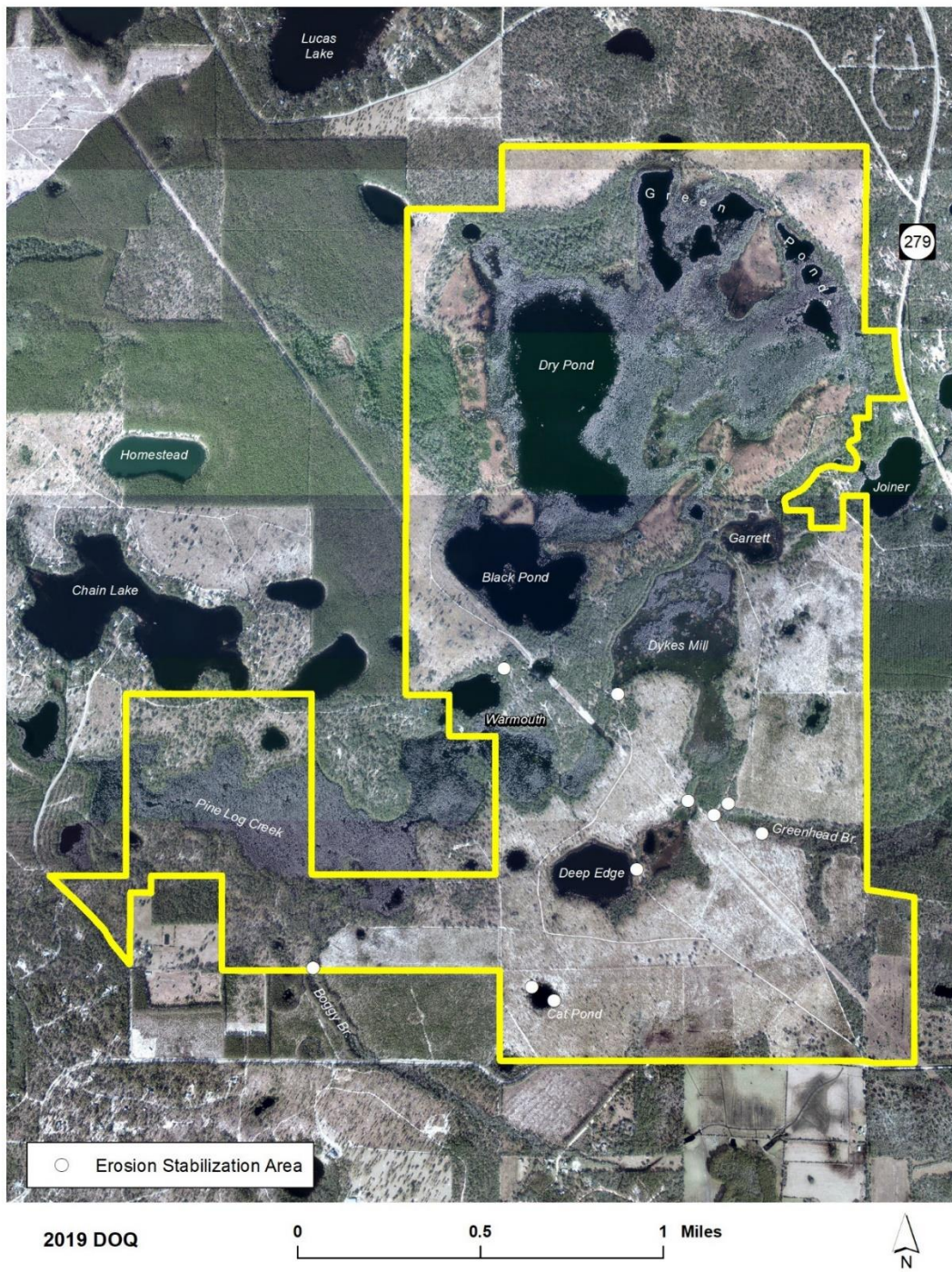


Figure 3. Structures Approved for Construction at the SHLMB (2005 FDEP Permit



Scientific Name

Species

Percent Cover

Figure 4. Erosion Stabilization Areas Restored at the SHLMB

Fire Management

Specific Condition 11: Prescribed fire

The bank is divided into 14 Management Units that range from 0.25 to 580 acres. Prescribed fire is an integral component of management, enhancement, and restoration at the SHLMB. Fire was re-introduced to the SHLMB during the winter of 2004 and burns were completed by December of 2005. Anticipated burn cycles were developed for the SHLMB (Figure 5). A total of 608 acres were burned in 2022 at the SHLMB (Figure 6). It is anticipated that 450 acres will be burned in 2023.

Fire prescriptions have been written to comply with open burning laws (Florida Statutes, Chapter 590). Safety and protection of property will continue to be the priority concern of the Florida Certified Prescribed Burn Manager (FCMB).

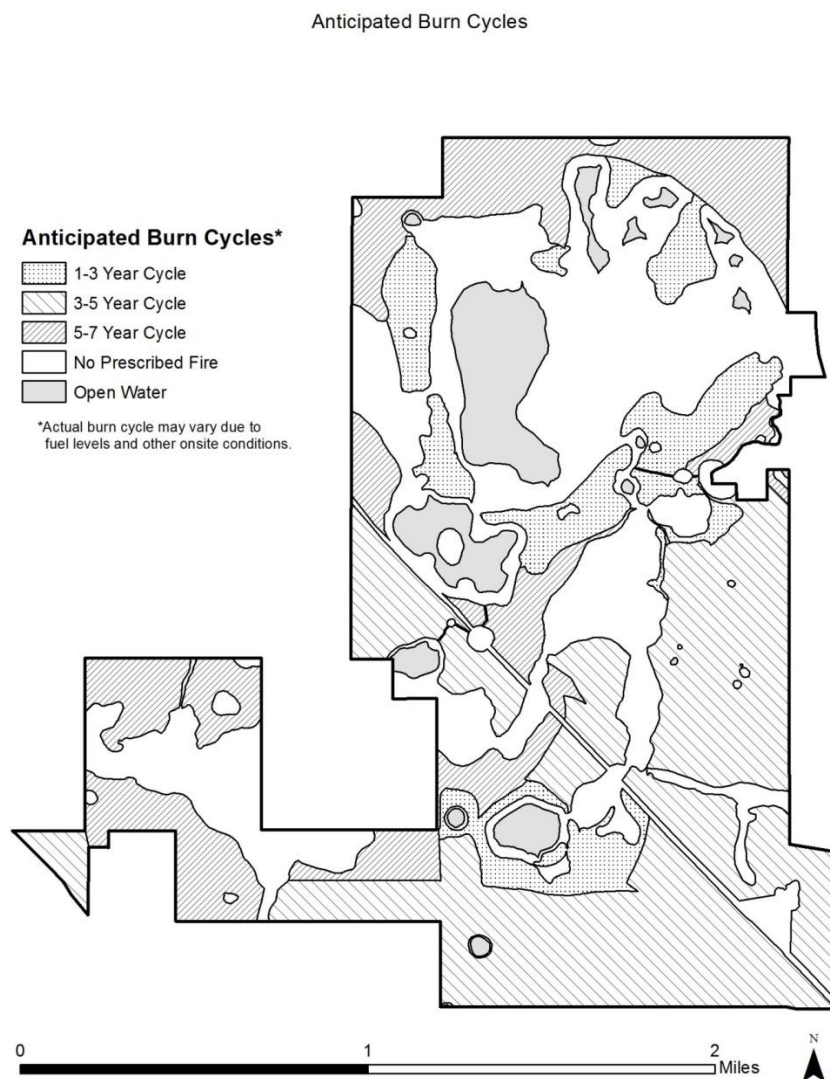


Figure 5. Proposed Burn Cycles

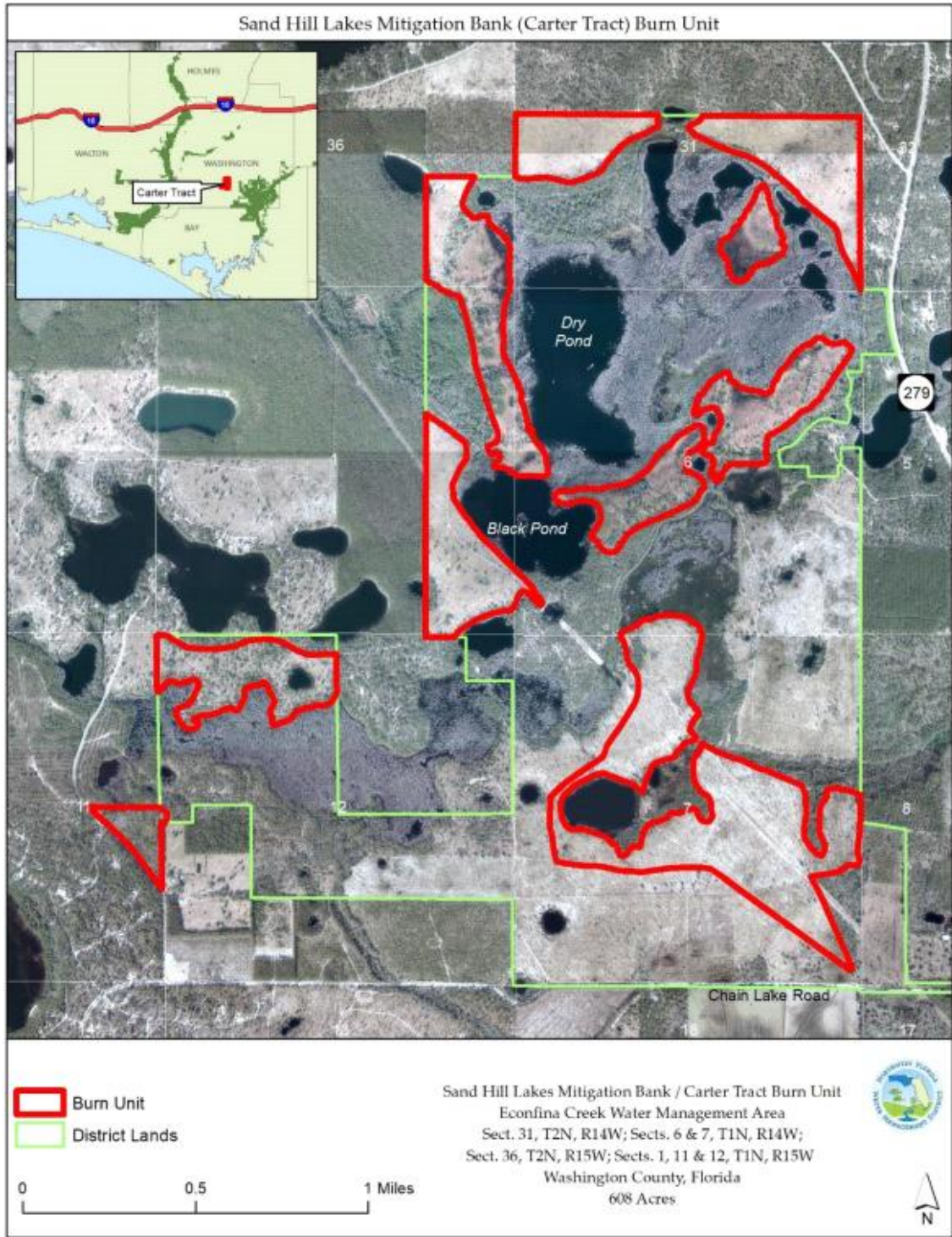


Figure 6. 2022 Prescribed Burns at the SHLMB

Exotic Fauna and Vegetation

Specific Condition 22, 25

Surveys of nuisance species are conducted throughout the year. No exotic vegetation was observed at the SHLMB in 2022.

The feral hog removal program at the SHLMB continued in 2022. Game cameras have been deployed across the site in key locations and are checked daily for the presence of feral hogs. Gaps in perimeter fencing have been fixed. In 2022, no feral hog damage was observed, or feral hogs recorded on cameras.

Monthly Water Gage Readings

Specific Condition 12

Water level gauges were installed and surveyed to the same datum (NAVD 1988) in December 2005 at 10 locations throughout the bank. These locations include Black Pond, Power Line Pond, Pine Log Creek, Deep Edge Pond, Little Deep Edge Pond, Dykes Mill Pond ditch connecting to Pine Log Creek #7, a natural channel from Joiner Lake to the Green Pond, Green Ponds, and Dry Lake. The gauges are read monthly by the Florida Fish and Wildlife Conservation Commission staff, and the results are submitted to the NFWFMD (Table 2, Figure 7).

Table 2. Water gauge data for the SHLMB

Readings in Feet	(1) Black Pond	(2) Power Line Pond	(3) Pine Log Creek	(4) Deep Edge Pond	(5) Little Deep Edge Pond	(6) Dykes Mill Pond	(7) Green Ponds Channel	(8) Joiner Lake Canal	(9) Green Ponds	(10) Dry Pond
Date	1/3/2022	1/3/2022	1/3/2022	1/3/2022	1/3/2022	1/3/2022	1/3/2022	1/3/2022	1/3/2022	1/3/2022
Reading	6.20	5.15	3.20	3.56	3.48	4.26	3.57	N/A	N/A	N/A
Date	2/1/2022	2/1/2022	2/1/2022	2/1/2022	2/1/2022	2/1/2022	2/1/2022	2/1/2022	2/1/2022	2/1/2022
Reading	6.64	5.48	3.50	3.48	3.36	4.10	3.98	N/A	N/A	N/A
Date	3/2/2022	3/2/2022	3/2/2022	3/2/2022	3/2/2022	3/2/2022	3/2/2022	3/2/2022	3/2/2022	3/2/2022
Reading	5.90	4.74	2.86	3.44	3.30	5.18	3.36	N/A	N/A	N/A
Date	4/4/2022	4/4/2022	4/4/2022	4/4/2022	4/4/2022	4/4/2022	4/4/2022	4/4/2022	4/4/2022	4/4/2022
Reading	5.88	4.68	2.86	3.6	3.62	5.1	3.38	N/A	N/A	N/A
Date	5/4/2022	5/4/2022	5/4/2022	5/4/2022	5/4/2022	5/4/2022	5/4/2022	5/4/2022	5/4/2022	5/4/2022
Reading	5.6	4.36	2.54	3.34	3.74	4.88	3.36	N/A	N/A	N/A
Date	6/1/2022	6/1/2022	6/1/2022	6/1/2022	6/1/2022	6/1/2022	6/1/2022	6/1/2022	6/1/2022	6/1/2022
Reading	5.74	4.62	2.80	3.43	3.54	4.91	3.34	N/A	N/A	N/A
Date	7/1/2022	7/1/2022	7/1/2022	7/1/2022	7/1/2022	7/1/2022	7/1/2022	7/1/2022	7/1/2022	7/1/2022
Reading	5.5	4.18	2.46	3.38	3.64	4.76	3.35	N/A	N/A	N/A
Date	8/1/2022	8/1/2022	8/1/2022	8/1/2022	8/1/2022	8/1/2022	8/1/2022	8/1/2022	8/1/2022	8/1/2022
Reading	6.22	4.94	2.98	3.38	3.62	4.76	3.72	N/A	N/A	N/A
Date	9/2/2022	9/2/2022	9/2/2022	9/2/2022	9/2/2022	9/2/2022	9/2/2022	9/2/2022	9/2/2022	9/2/2022
Reading	6.16	4.89	2.90	3.88	3.58	4.76	3.98	N/A	N/A	N/A
Date	10/3/2022	10/3/2022	10/3/2022	10/3/2022	10/3/2022	10/3/2022	10/3/2022	10/3/2022	10/3/2022	10/3/2022
Reading	5.76	4.44	2.48	3.02	3.46	4.58	3.18	N/A	N/A	N/A
Date	11/4/2022	11/4/2022	11/4/2022	11/4/2022	11/4/2022	11/4/2022	11/4/2022	11/4/2022	11/4/2022	11/4/2022
Reading	5.08	3.76	1.9	2.68	3.46	5.06	N/A	N/A	N/A	N/A
Date	12/5/2022	12/5/2022	12/5/2022	12/5/2022	12/5/2022	12/5/2022	12/5/2022	12/5/2022	12/5/2022	12/5/2022
Reading	4.82	3.64	1.84	2.64	3.22	4.72	N/A	N/A	N/A	N/A

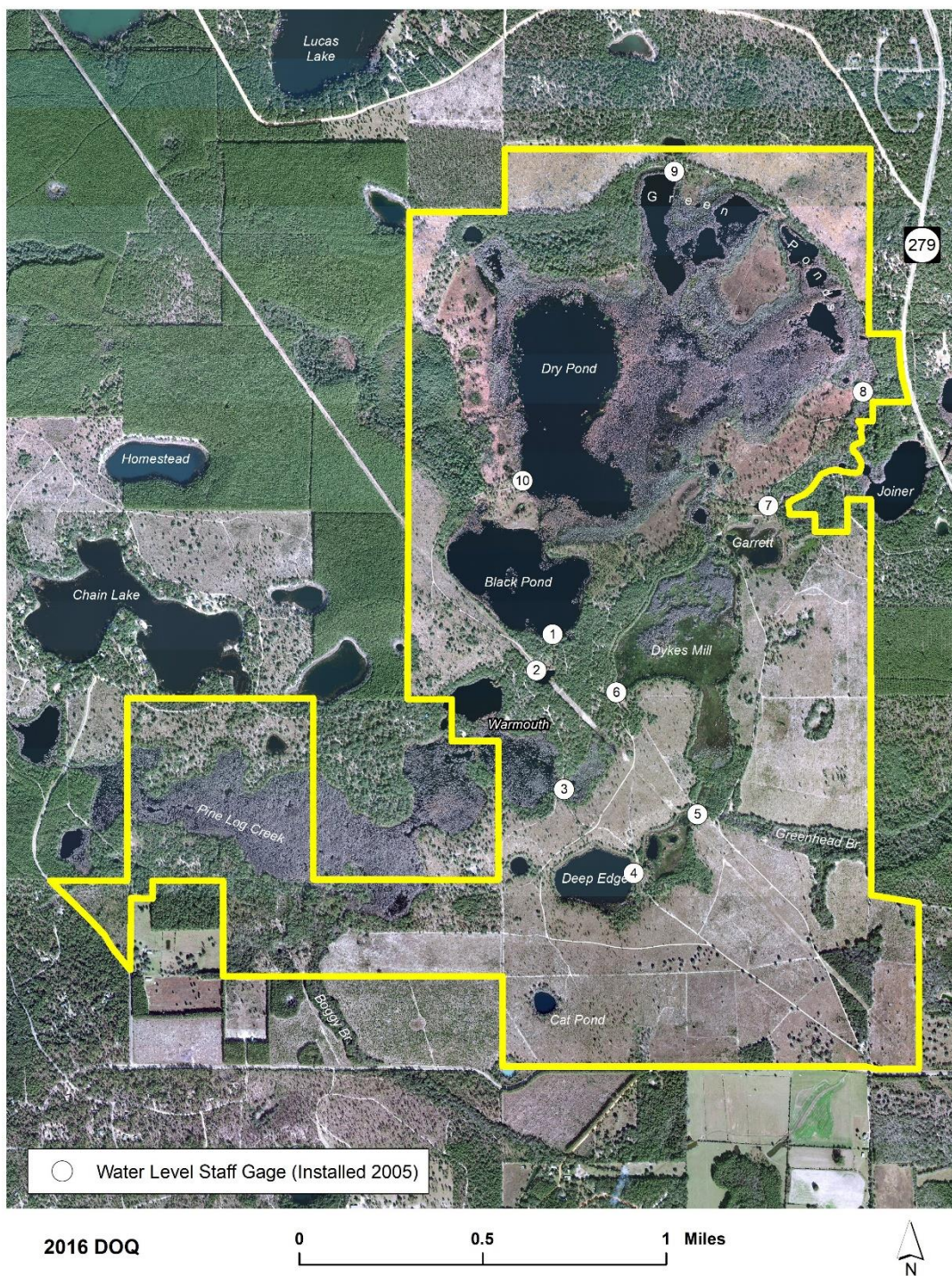


Figure 7. The Ten Staff Gage Locations at the SHLMB

Sandhill Restoration

Specific Condition 10, Community restoration
Oak eradication, Specific Condition 10b

Specific conditions and UMAM polygons can be found within the FDEP and ACOE Mitigation Bank permit and can be found at <https://www.nwfwater.com/Water-Resources/Regional-Wetland-Mitigation-Program>. Oak eradication in UMAM polygon I was initiated in August of 2005. Five hundred fifty acres of sandhills have had the oaks thinned to less than 150 trees per acre in accordance with permit conditions. Hardwood eradication also occurred in UMAM Polygon III for a total of 355 acres. Target shrub species included sparkleberry, turkey oak, water oak and diamond oak. Sand pine seedlings were eradicated in 2012 - 2013 for 258 acres of former sand pine plantation restored to sandhills (UMAM Polygon II).

Pine Plantation Harvest and Restoration Activities

Specific Condition 10a

Restoration activities for the existing sand pine plantation (~383 acres) (UMAM polygon II) and slash pine plantations (UMAM polygon VII) were initiated in June 5, 2007. The sand pine and slash pine plantations harvest began on June 15 and completed on November 16, 2007.

Long Leaf Pine Planting

Specific Condition 10c

A total of 646 acres of sandhill and sandhill restoration were planted with longleaf pine at a rate of 436 trees per acre in accordance with Specific Condition 10 (UMAM polygons I, II and III). Currently, average planted longleaf pine densities remain near or below 200 trees per acre.

Upland Wiregrass and Additional Planting

Specific Condition 10c

In areas with less than 25 percent wiregrass cover, a supplemental wiregrass planting occurred. A total of 454.5 acres of sandhill understory was restored by planting wiregrass on 3' centers, (2,199,780 plants) (UMAM polygon II, III). Survival of the wiregrass in the uplands has averaged 80 percent. Seedling wiregrass has been commonly observed. In 2017, 32,000 plants from 20 sandhill species were installed within 37 acres of sandhill restoration adjacent to the entrance. An average of four wiregrass seedlings per meter square were observed in 2020 sampling. Twelve acres of restored sandhill adjacent to Dykes Mill Pond were planted with an additional 14,500 grass and forbs plugs in 2021. This recruitment will help to increase the diversity within the sandhill restoration.

Hydric Pine Flatwoods Restoration

Specific Condition 10c

A total of 163.88 acres of wet flatwoods restoration has been implemented at the SHLMB (Figure 8). Standing biomass of shrubs (primarily titi, gallberry and fetterbush) was reduced to ground level with the use of a Gyro-Trac followed by winter burns. The Gyro-Track work was initiated on March 13, 2007, and was completed by August 20, 2008. Annual herbicide treatments for three years reduced shrub cover to

less than 5 percent. These areas have maintained at 5 percent or less shrub cover with the use warm season burns on an annual basis. The hydric pine flatwoods were planted with 1.18 million wiregrass plants, 182,700 cut over muhly grass, 122,600 toothache grass and 72,600 mixed hydric pine flatwoods wildflowers. In 2022 an additional planting of 37,500 muhly and toothache grass occurred adjacent to Dry Pond. All plantings were conducted in accordance with Specific Condition 10 and Appendix D. The hydric pine flatwood community continues to develop and increase in cover and diversity. Annual burning implemented in hydric pine flatwoods restoration since 2019 appears to be successful in reducing bushy bluestem cover.

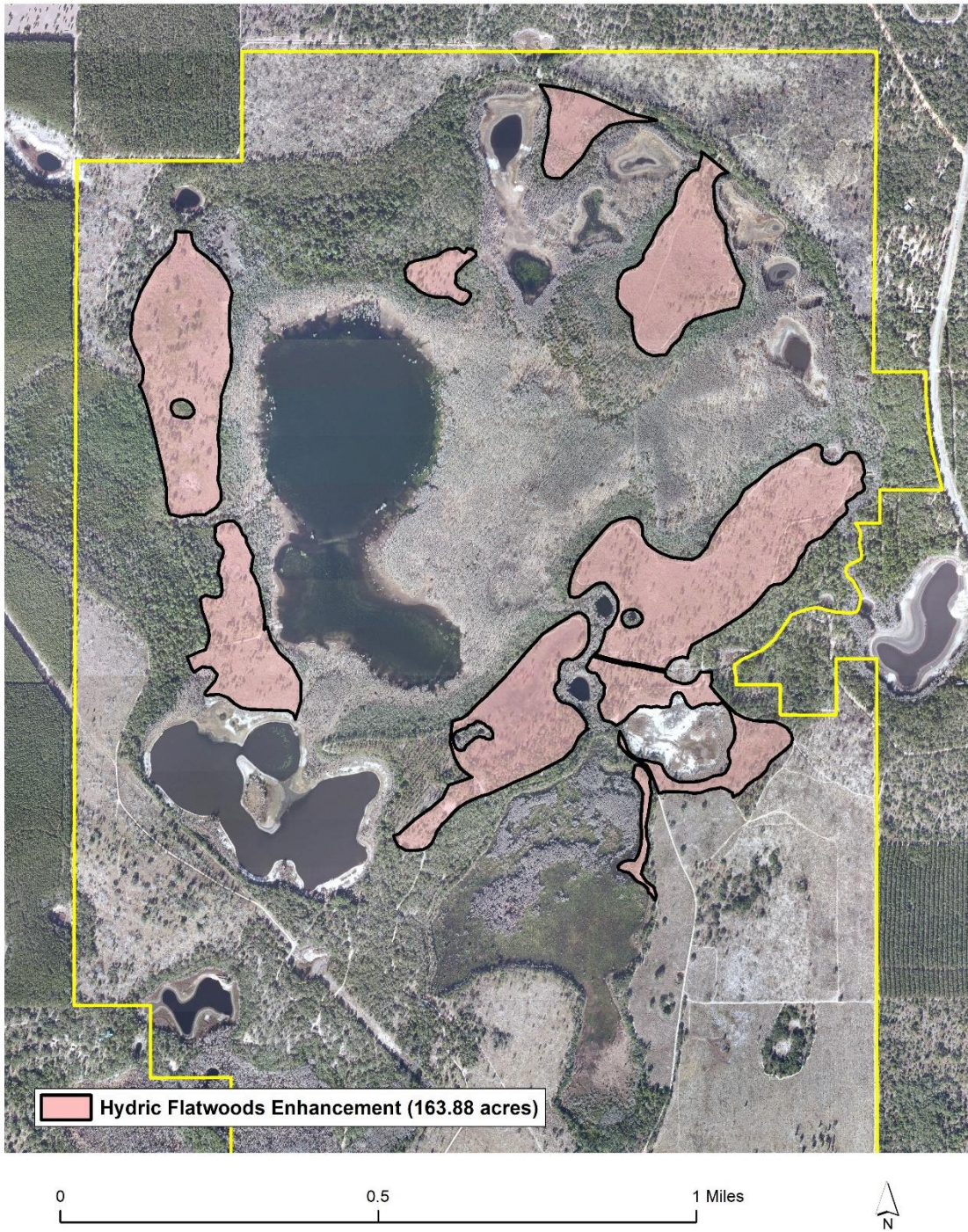


Figure 8. Hydric Pine Flatwoods Restoration Areas (163.88 Acres)

Annual Monitoring

Specific Conditions 26 and 28

Sampling locations were located on a map and field verified (Figure 9). Fall monitoring methods and data analysis are described below. Pedestrian surveys and photographic documentation are located at: <https://www.nfwwater.com/Water-Resources/Regional-Wetland-Mitigation-Program>

The dates of annual sampling for the 2022 annual report were October 11, 12, 24, 25 and November 7, 8, 28, 29, and 30 in accordance with Specific Condition 28. Pedestrian surveys were conducted for both wetland and uplands. The pedestrian surveys are particularly useful in providing detailed species lists and help in determining community diversity. Species diversity is good to excellent throughout the SHLMB, and plants appeared vigorous and healthy. The number of species observed continues to increase within the restoration communities as habitats improve. The 2021-2022 Annual report by the Florida Fish and Conservation Commission can be found on the District website (see above) in accordance with Specific Condition 25f.

Quantitative Monitoring

Materials and Methods

Quantitative monitoring has been conducted in accordance with the methods described in Attachment H – Monitoring Plan. Quantitative vegetation monitoring occurred at the end of the growing season. This is the twelfth annual monitoring report for the SHLMB.

The percent vegetation cover was monitored at transect locations shown in Figure 9. One-meter square quadrats were established along 600-foot transects at 20-foot intervals. Vegetation species coverage statistics were recorded. The percent coverage for each species was generated by adding all quadrat observations together and dividing the total coverage by the cover of each species within each transect. This represents a modified Daubenmire cover scale where vegetation species statistics are used to determine the percent cover by species.

Tree density was monitored using the “line strip” (belt transect) technique. Transects were co-located with each vegetation transect. The belt transects will be 600± feet in length and 30± feet in width. Within each belt transect the height and condition of each planted tree was recorded.

Photographic Stations

Panoramic photographs were taken from the permanently established stations at each transect and are found on the District website: <https://www.nfwwater.com/Water-Resources/Regional-Wetland-Mitigation-Program> (Figure 9).

Wildlife Utilization

During the vegetation monitoring described above, wildlife observations are recorded in each community. These observations will consist of direct sightings, scat, tracks, or vocalizations.

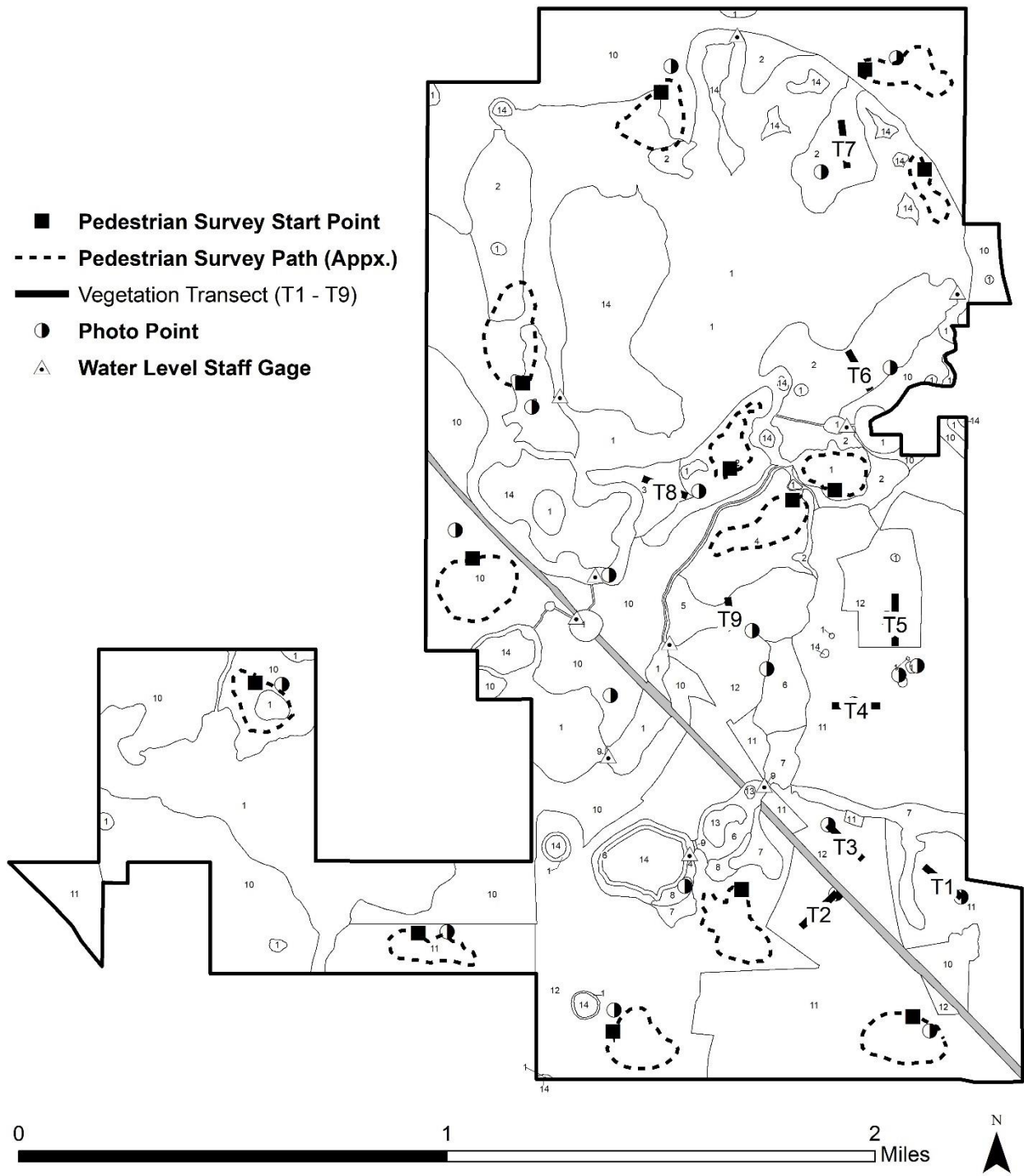


Figure 9. Monitoring Locations

Results and Discussion

UMAM Polygon II, Management Unit 11- Sand Pine Plantation (Transect #1, #2 and #4)

UMAM Polygon II, Management Unit 11, consists of 367 acres of planted sand pine plantation that have been restored to sandhills. Baseline conditions indicated a sand pine canopy with 100 percent canopy closure and an average of 880 sand pine trees per acre in the sand pine plantations. Removal of the sand pine was completed in November 2007 followed by planting of longleaf pine at 436 trees per acre. In 2021, eight sandhill species (145,450 plugs) were planted in the sandhill adjacent to Little Deep Edge Pond. It is hoped that these species will help augment the developing sandhill diversity. Baseline herbaceous monitoring identified 10 species within Transect 1, 16 in Transect 2, and 20 in Transect 4.

During the 2021 monitoring, 21 species were observed in Transect 1, 31 in Transect 2 and 31 within Transect 4. Wiregrass had the greatest vegetative cover for each transect ranging from 64 percent in Transect 1 to percent 30.6 percent in Transect 2. Bare ground ranged from 5.8 percent in Transect 1 to 28.3 percent in Transect 4. The site continues to develop in species richness.

During the 2022 monitoring, 13 species were observed in Transect 1, 11 in Transect 2 and 22 within Transect 4. (Tables 3-5; Figures 10-12). Wiregrass had the greatest vegetative cover for each transect ranging from 65.5 percent in Transect 1 to percent 42 percent in Transect 2. Bare ground ranged from 15.2 percent in Transect 2 to 35.8 percent in Transect 4. The site continues to develop in species richness.

Interim Success Criteria:

The sand pine plantations were harvested in 2007. Site preparation burns were conducted during the winter of 2008 and planted with longleaf pine in the winter of 2008-2009. Wiregrass plugs were planted on 3-foot centers in the former sand pine plantations in 2008 and completed in 2010. The area is burned on a two-year rotation. Wiregrass cover continues to be the dominant species. Planted longleaf pine densities remain near or below 200 trees per acre. Trees are healthy and vigorous. Bahia and centipede grass cover continues to be monitored and treated as needed.

Table 3. Transect 1 Species cover and occurrence (Sandhill Restoration)

Date 10/11/22 Collector: David Clayton

<i>Scientific Name</i>	Species	Percent Cover
<i>Andropogon virginicus</i>	Broomgrass	2.8
<i>Aristida stricta</i>	Wiregrass	52.5
<i>Chrysopsis lanuginosa</i>	Lynn Haven goldenaster	1.5
<i>Desmodium sp.</i>	Desmodium	0.2
<i>Dichanthelium aciculare</i>	Narrowleaf silkgrass	0.5
<i>Diospyros virginiana</i>	Persimon	0.83
<i>Eremochloa ophiuroides</i>	Centipede grass	0.33
<i>Eupatorium compositifolium</i>	Yankeeweed	3.1
<i>Eupatorium morhii</i>	Mohr's thoroughwort	0.34
<i>Gamochaeta pensylvanica</i>	Pennsylvania cudweed	0.2
<i>Ilex vomitoria</i>	Yaupon	2.6

Scientific Name	Species	Percent Cover
<i>Rubus cuneifolius</i>	Sand black berry	13
<i>Vitis rotundifolia</i>	Muscadine	0.3
	Bare ground	18.6

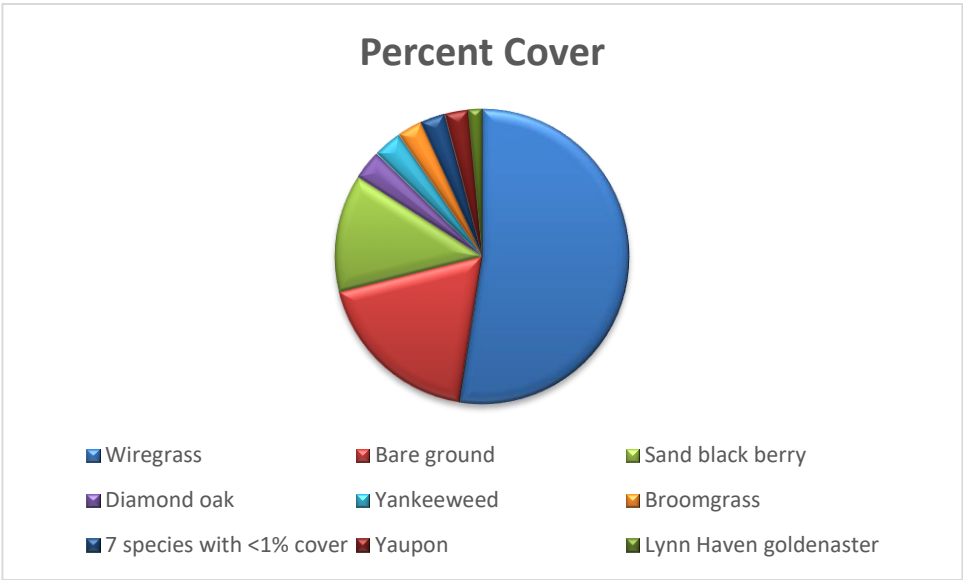


Figure 10. Transect 1: Sand pine plantation restored to sandhill

Table 4. Transect 2 Species cover and occurrence (Sandhill Restoration)

Scientific Name	Species	Percent Cover
<i>Aristida stricta</i>	Wiregrass	42
<i>Bulbostylis ciliatifolia</i>	Capillary hairsedge	0.33
<i>Ceanothus microphyllus</i>	New Jersey Tea	0.31
<i>Chrysoma pauciflosculosa</i>	Woody goldenrod	6.5
<i>Chrysopsis lanuginosa</i>	Lynn Haven goldenaster	0.3
<i>Desmodium sp</i>	Desmodium	8
<i>Diospyros virginiana</i>	Persimmon	0.5
<i>Eupatorium compositifolium</i>	Yankeeweed	0.8
<i>Hypericum gentinoides</i>	Orange weed	0.2
<i>Ilex vomitoria</i>	Yaupon	0.5
<i>Opuntia humifusa</i>	Prickly pear	0.16
<i>Panicum virgatum</i>	Switch grass	0.8
<i>Pityopsis graminifolia</i>	Narrowleaf silkgrass	0.16
<i>Pteridium aquilinum</i>	Brachen	0.3
<i>Rubus cuneifolius</i>	Black berry	0.33
Scientific Name	Species	Percent Cover
<i>Vaccinium darrowii</i>	Darrow's bleuberry	1.3

Vaccinium elliotii

Elliot's blueberry

0.5

Bare ground

35.8

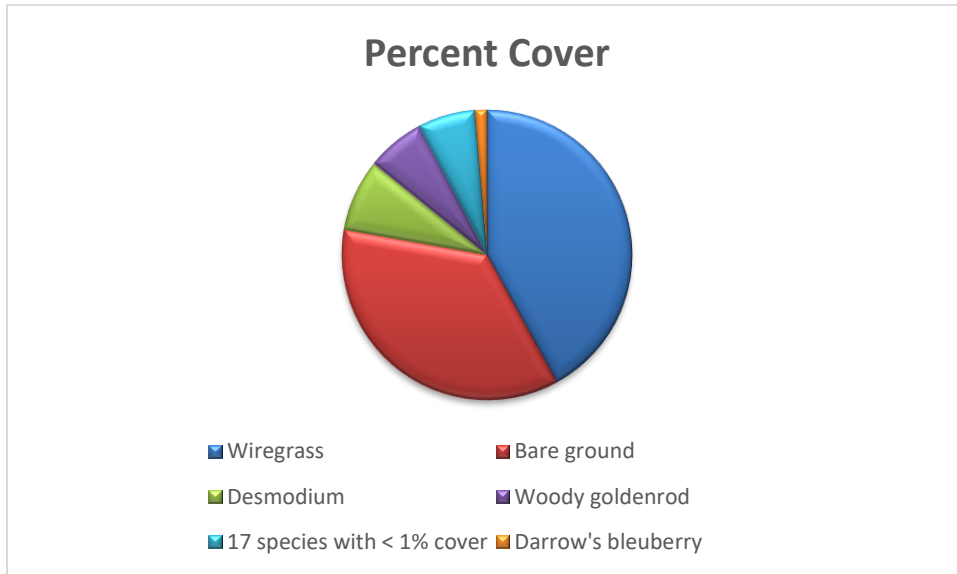


Figure 11. Transect 2: Sand pine plantation restored to sandhill

Table 5. Transect 4 Species cover and occurrence (Sandhill Restoration)

Date 11/08/22

Scientific Name	Species	Percent Cover
<i>Andropogon glomeratus</i>	Bushy bluestem	1.5
<i>Andropogon ternarius</i>	Splitbeard bluestem	1
<i>Aristida stricta</i>	Wiregrass	65.3
<i>Baptisia lanceolata</i>	Gopher weed	1.2
<i>Ceanothus microphyllus</i>	New Jersey Tea	1.2
<i>Chrysoma pauciflosculosa</i>	Woody goldenrod	0.3
<i>Diodia teres</i>	Diodia	0.2
<i>Diospyros virginiana</i>	Persimon	0.8
<i>Edrastima uniflora</i>	Clustered mille grains	0.3
<i>Euthamia caroliniana</i>	Flattopped goldenrod	3
<i>Eupatorium compositifolium</i>	Yankeeweed	0.2
<i>Hypericum crux-andreae</i>	St. Peter's wort	0.8
<i>Paspalum notatum</i>	Bahiagrass	0.7
<i>Penstemon multiflorus</i>	Beardtongue	0.5
<i>Pityopsis graminifolia</i>	Silkgrass	0.6
<i>Quecus hemaespherica</i>	Diamond oak	0.3
Scientific Name	Species	Percent Cover
<i>Rhus copallinum</i>	Winged sumac	2

<i>Rhynchospora</i>	Rhynchospora	0.3
<i>Rubus cuneifolius</i>	Sand black berry	4
<i>Xyris caroliniana</i>	Carolina yellow-eyed grass	0.2
<i>Yucca filamentosa</i>	Adam's needle	0.2
	Bare ground	15.2

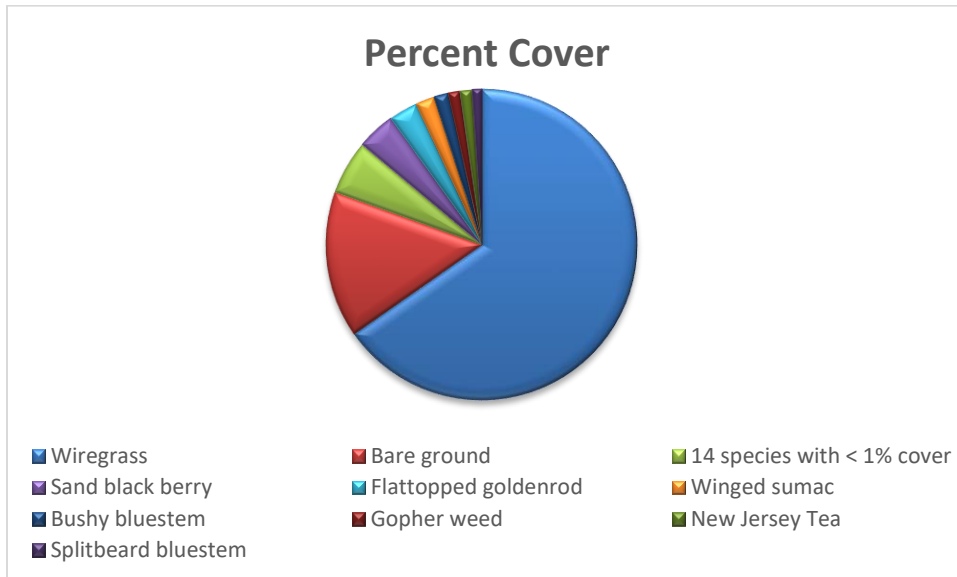


Figure 12. Transect 4: Sand pine plantation restored to sandhill

Planted Longleaf Pine Seedlings

Longleaf pine seedlings were planted in the sandhills at a rate of 436 trees per acre. Permit conditions require a maximum average of 200 longleaf pine trees per acre. Planted tree densities are determined by counting all the seedlings in a 30' X 600' plot co-located with each transect and converting to trees per acre. All tree seedlings counted and measured by size class and notes on tree condition are included. The survival of longleaf pine seedlings along each transect was observed to be trees between 78 and 174 trees per acre. Overall health of the planted seedlings was excellent. Many have produced cones over the last several years. Trees averaged 20 -25 feet in height and the average diameter and breast height (DBH) is ten inches (Figures 13-15).

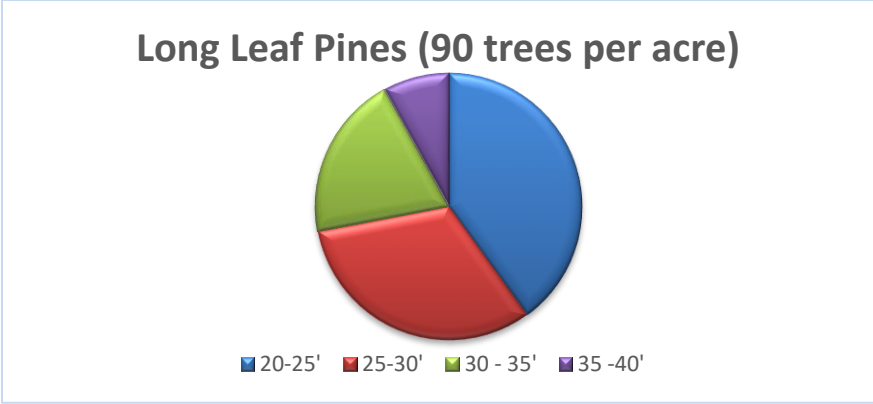


Figure 13. Planted longleaf pine seedlings (Transect 1)

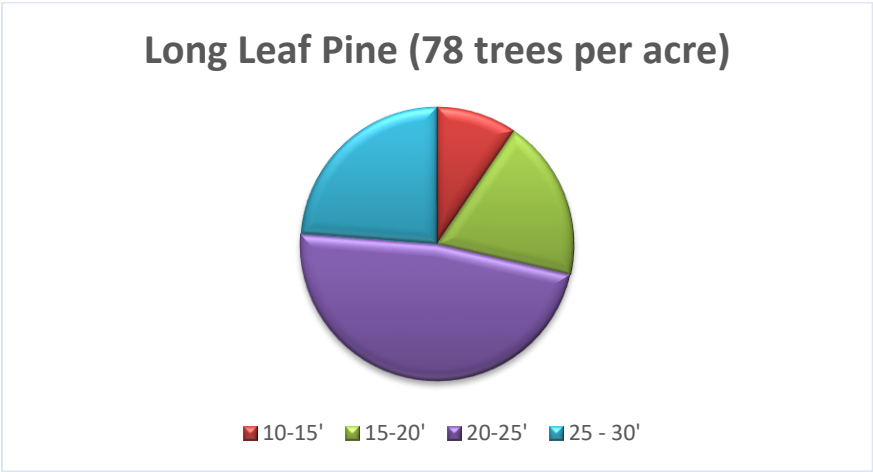


Figure 14. Planted longleaf pine seedlings (Transect 2)

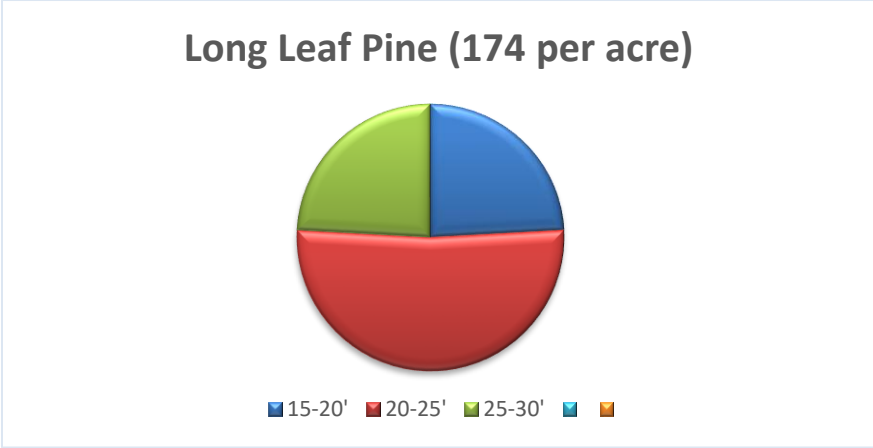


Figure 15. Planted longleaf pine seedlings (Transect 4)

UMAM Polygon I, Management Unit 12- Sandhill Restoration

UMAM Polygon I, Management Unit 12, consists of 263.52 acres. At the time of purchase, the sandhill overstory was dominated by turkey and live oaks with scattered remnant longleaf pine and an understory dominated by hardwood shrubs, woody goldenrod, wiregrass, and a variety of herbaceous species. Reclamation activities included reintroduction of fire, thinning of oaks to less than 150 trees per acre, and reestablishment of longleaf pine. Fire was reintroduced during the winter of 2004. Currently, longleaf pines dominate the overstory with scattered turkey, live oak, and bluejack oak. The understory is dominated by wiregrass. Baseline sampling indicated 23 species within Transect 3 and 31 species in Transect 5.

During the 2021 monitoring, 33 species were observed within Transect 3. A total of 33 species were also observed within Transect 5. Wiregrass cover was the greatest cover class observed with 27.5 percent cover in Transect 3 and 26 percent within Transect 5. Bare ground cover was 34.3 percent within Transect 3 and 32 percent within Transect 5.

During the 2022 monitoring, 31 species were observed within Transect 3. A total of 21 species were observed within Transect 5 (Table 6, 7, Figures 16 and 17). Wiregrass cover was the greatest cover class observed with 27.5 percent cover in Transect 3 and 52.8 percent within Transect 5. Bare ground cover was 34.3 percent within Transect 3 and 19 percent within Transect 5.

Interim Success Criteria:

The interim success criteria have been met for UMAM I polygon I. Fire was re-introduced to the site, turkey and live oaks were thinned to less than 150 trees per acre and longleaf pine have been planted. No nuisance or exotic species were observed, fire adapted species dominate the vegetative cover.

Table 6. Transect 3: Species Cover and Occurrence (Sandhill Enhancement)

11/07/22, Data Collector: David Clayton

Scientific Name	Species	Percent Cover
<i>Andropogon ternarius</i>	Splitbeard bluestem	1.2
<i>Andropogon virginicu</i>	Broom sedge	2.7
<i>Aristida stricta</i>	Wiregrass	27.5
<i>Bulbostylis ciliatifolia</i>	Capillary hairsedge	0.83
<i>Carphephorus odoratissimus</i>	Vanilla leaf	0.2
<i>Ceanothus microphyllus</i>	New Jersey Tea	1.1
<i>Chrysoma pauciflosculosa</i>	Woody goldenrod	5
<i>Chrysopsis lanuginosa</i>	Lynn Haven goldenaster	0.33
<i>Cyperus sp.</i>	Cyperus	0.2
<i>Dichantherium aciculare</i>	Needleleaf witchgrass	10.3
<i>Diospyros virginiana</i>	Persimon	1
<i>Eragrostis sp.</i>	Lovegrass	0.7
<i>Croton argyranthemus</i>	Silver croton	0.2
<i>Galactia floridana</i>	Florida milkpea	2
<i>Liatris chapmanii</i>	Chapman's gayfeather	0.2
<i>Liatris pauciflora</i>	Piedmont gayfeather	0.2

Scientific Name	Species	Percent Cover
<i>Panicum virgatum</i>	Switch grass	1.2
<i>Pieris phyllireifolia</i>	Pieris	0.2
<i>Pennstemon multiflorus</i>	Penstemon	0.33
<i>Pityopsis graminifolia</i>	Narrowleaf silkgrass	0.33
<i>Polygonella gracilis</i>	Wire weed	0.16
<i>Opuntia humifusa</i>	Prickly pear cactus	0.66
<i>Quercus incana</i>	Bluejack oak	0.8
<i>Quercus laevis</i>	Turkey oak	0.5
<i>Rhus copallinum</i>	Sumac	0.33
<i>Rhynchosia cytisoides</i>	Royal snoutbean	0.2
<i>Rubus cuneifolius</i>	Blackberry	0.5
<i>Schizachyrium sp</i>	Little blue stem	0.83
<i>Smilax sp</i>	Greenbrier	0.2
<i>Solidago fistulosa</i>	Pinebarn goldenrod	0.66
<i>Vaccinium darrowii</i>	Darrow's blueberry	4.5
	Bare ground	34.3

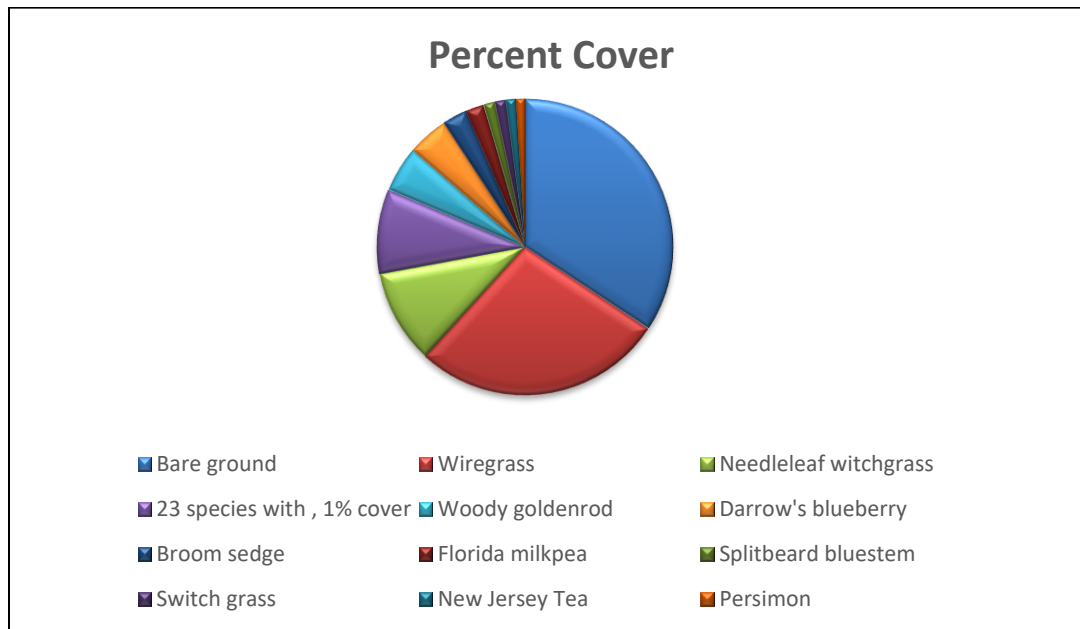


Figure 16. Transect 3: Species cover and occurrence (Sandhill Enhancement)

Table 7. Transect 5: Species Cover and Occurrence (Sandhill Enhancement)

Scientific Name	Species	Percent Cover
<i>Andropogon ternarius</i>	Splitbeard bluestem	5.8
<i>Aristida stricta</i>	Wiregrass	52.8
<i>Baptisia lanceolata</i>	Gopher weed	0.83
<i>Balduina angustifolia</i>	Coastalplain honeycomb head	7
<i>Chrysoma pauciflosculosa</i>	Woody goldenrod	0.2
<i>Chrysopsis lanuginosa</i>	Lynn Haven goldenaster	0.2
<i>Cyperus sp.</i>	Sedge	0.2
<i>Geobalanus oblongifolius</i>	Gopher apple	0.7
<i>Houstonia procumbens</i>	Innocense	0.37
<i>Hypericum andreanum</i>	St. Peterswort	1.2
<i>Hypericum gentinianoides</i>	Orangeweed	0.5
<i>Mimosa quadrivalvis</i>	Powder puff	0.2
<i>Pityopsis graminifolia</i>	Narrowleaf silkgrass	1.3
<i>Polygonella gracilis</i>	Wire weed	1.2
<i>Pteridium aquilinum</i>	Brachen	1.6
<i>Quercus incana</i>	Bluejack oak	4
<i>Quercus virginiana</i>	Live oak	0.2
<i>Seymeria pectinata</i>	black senna	0.3
<i>Smilax sp.</i>	Smilax	0.2
<i>Solidago fistulosa</i>	Pine barren goldenrod	0.5
<i>Symphotrichum dumosum</i>	blue curls	0.2
	Bare ground	19

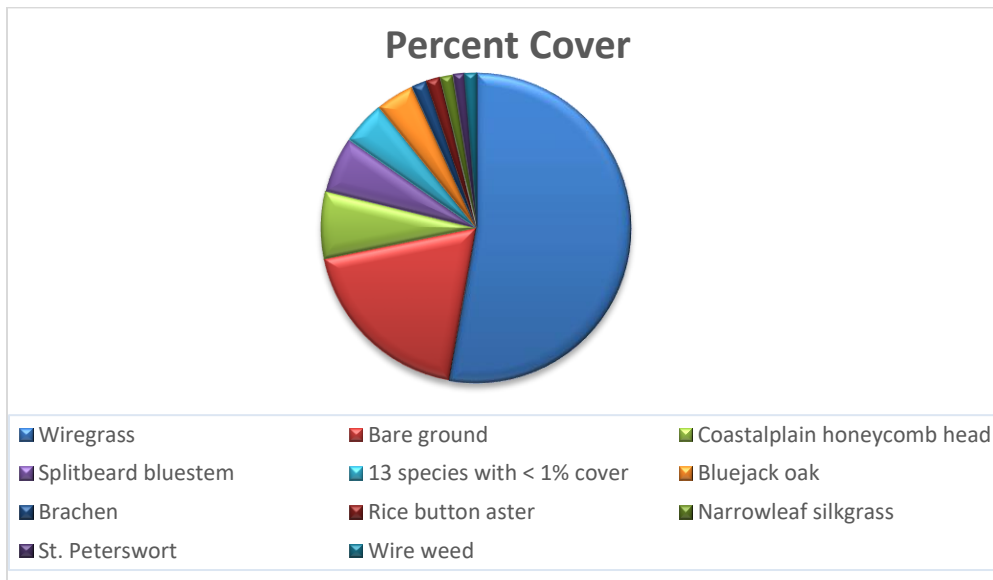


Figure 17. Transect 5: Species cover and occurrence (Sandhill Enhancement)

Planted Longleaf Pine Seedlings

Longleaf pine seedlings were planted in the sandhills at a rate of 436 trees per acre.

In 2022, the survival of longleaf pine seedlings was 116 per acre in Transect 3 and 116 per acre in Transect 5. Tree height was variable but with the most trees in the 15-20. Trees appear healthy and vigorous and have started producing pinecones (Figures 18 and 19).

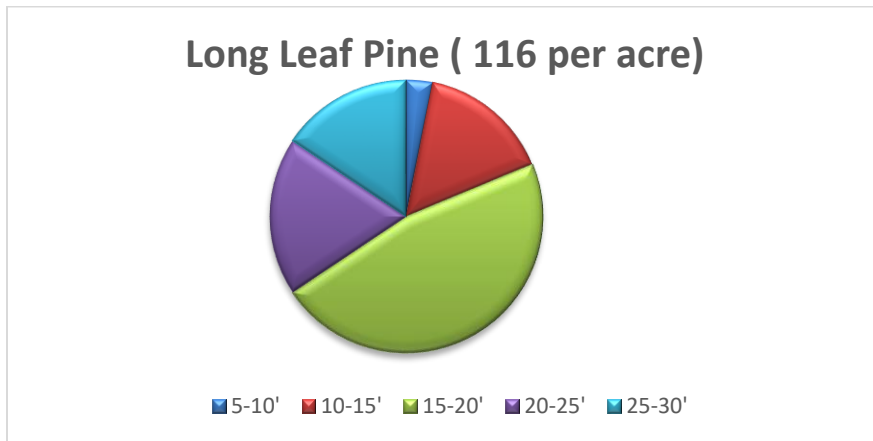


Figure 18. Planted longleaf pine seedlings (Transect 3)

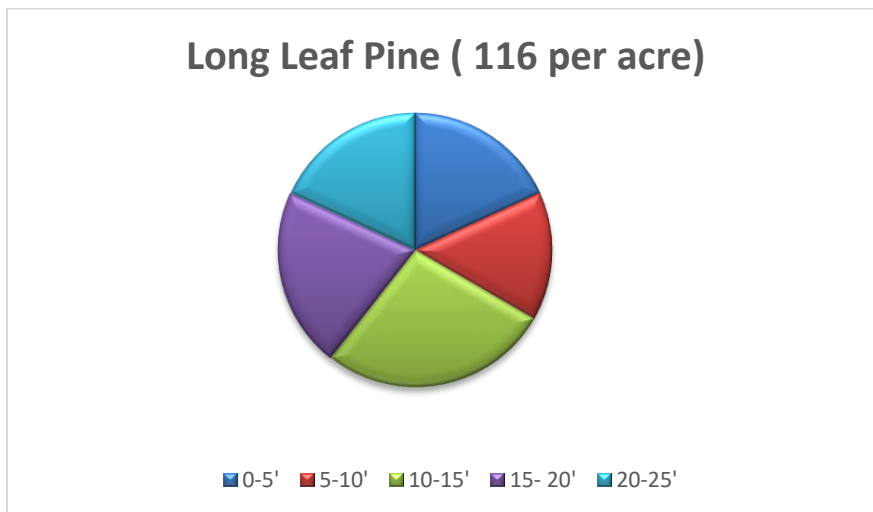


Figure 19. Planted longleaf pine seedlings (Transect 5)

UMAM Polygon(s): VII, Management Unit 3- Planted Slash Pine Plantation

UMAM Polygon VII, Management Unit 3, consists of 11.5 acres of bedded planted slash pine restored to a hydric pine flatwood. The overstory was dominated by planted slash pine at 880 trees per acre. The shrub layer was well developed, and the understory largely absent due to the coverage of the trees and

shrubs. Pines were thinned to 400 trees per acre in 2007. Trees were harvested again in 2012 to 200 trees per acre. Shrubs were eradicated using herbicide for two years. In winter 2012, wiregrass and toothache grass plugs were planted on three-foot centers. The restored slash pine plantation is burned annually starting in 2019. Baseline monitoring indicated a total of 17 species. Nine of the observed species were shrubs.

During the 2021 monitoring 44 species were observed. The site diversity continues to improve as the site develops. Bare ground was low at 5.2 percent. Nuisance shrub species cover was 0.3 percent and herbaceous species cover was 94.5 percent cover.

During the 2022 monitoring 25 species were observed. The site diversity continues to improve as the site develops. Bare ground was low at 20.7 percent. Nuisance shrub species cover was 2.5 percent and herbaceous species cover was 96.5 percent cover (Table 8, Figure 20).

Interim Success Criteria:

The management activities used to restore UMAM VII, Management Unit 3 have been completed. A diverse wet flatwoods understory continues to develop.

Table 8. Transect 8. Species Cover and Occurrence (Hydric Pine Restoration)

Date 11/08/22 Collector: David Clayton

Scientific Name	Specie	Percent Cover
<i>Andropogon glomeratus</i>	Bushy bluestem	4.1
<i>Aristida mohri</i>	Morh's three awn	0.4
<i>Aristida stricta</i>	Wiregrass	12
<i>Carex glaucescens</i>	Clustered sedge	0.8
<i>Centella asiatica</i>	Centella	1.7
<i>Cliftonia racemosa</i>	Titi	2.5
<i>Coleataenia rigidula</i>	Red top panicum	0.5
<i>Ctenium aromaticum</i>	Toothache grass	9.8
<i>Dichantherium sp.</i>	Witch grass	1.3
<i>Edrastrima uniflora</i>	Clustered mille graines	0.1
<i>Euthamia caroliniana</i>	Slender flattopped goldenrod	0.8
<i>Gaylussacia dumosa</i>	Dwarf huckleberry	0.4
<i>Gelsemium sempervirens</i>	Florida jessamine	2.5
<i>Hypericum crux-andreae</i>	St. Peter's wort	0.2
<i>Hypericum cisitifolium</i>	Round pod St. John's wort	0.5
<i>Hypericum punctatum</i>	Spotted St. John's wort	17
<i>Ilex myrtifolia</i>	Myrtle leaved holly	0.6
<i>Kellochloa verrucosum</i>	Warty panic grass	0.4
<i>Lachnanthes caroliniana</i>	Red root	0.5
<i>Ludwigia leptocarpa</i>	Angled primrose willow	0.5
<i>Lycopus rubellus</i>	Water horehound	0.5
<i>Lyonia lucida</i>	Fetterbush	0.7

Scientific Name	Specie	Percent Cover
<i>Rhexia virginicus</i>	Handsome harry	0.5
<i>Rhynchospora plumosa</i>	Plumed beaksedge	9
<i>Solidago odora</i>	Pine barren goldenrod	12
	Bare ground	20.7

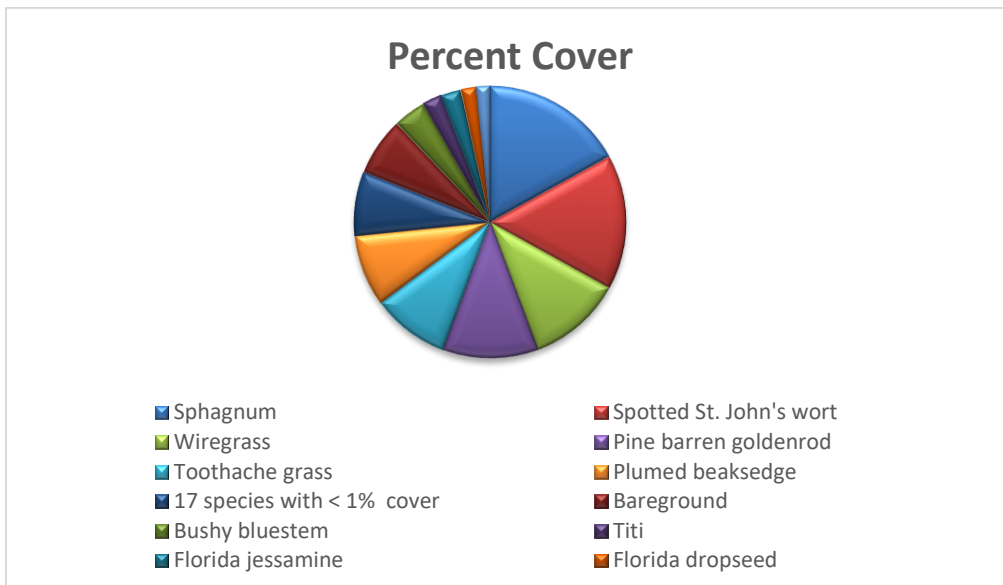


Figure 20. Transect 8: Species cover and occurrence

UMAM Polygon V, Management Unit 2, Hydric Pine Flatwoods

UMAM Polygon V, Management Unit 2 consists of 163.88 acres of fire suppressed shrub dominated hydric pine flatwoods that have been restored to a hydric pine flatwood. The overstory was dominated by a near impenetrable shrub layer and absent herbaceous layer. Reclamation activities within this polygon included removal of shrub overstory utilizing a Gyro-Trac followed treatment with selective herbicides, re-introduction of fire, and planting wiregrass plugs on 3' centers. Two transects, 6 and 7 were established within the hydric pine flatwoods restoration. Baseline monitoring in 2006 indicated 14 species in Transect 6 and 16 species in Transect 7. Seven of the species identified were shrubs.

During the 2021 monitoring, 31 and 24 species were observed within Transect 6 and 7. Hydric pine flatwood species dominated both transects. Shrub cover was 1.5 percent for Transect 6 and 1.8 percent for Transect 7. Vegetative cover was 96.4 percent for transect 6 and 92.9 for Transect 7.

During the 2022 monitoring, 29 and 20 species were observed within Transect 6 and 7. Hydric pine flatwood species dominated both transects. Shrub cover was 1.6 percent for Transect 6 and 2.5 percent for Transect 7. Vegetative cover was 96.2 percent for transect 6 and 81.5 for Transect 7 (Table 9, 10, Figure 21 and 22).

Interim Success Criteria:

The restoration activities for UMAM V, Management Unit 2 were completed by 2007. Fire was introduced in 2005. A Gyro-Trac shrub reduction was initiated in April 2007 and completed in August 2008. Baseline data from the 2006 monitoring event showed 100 percent cover of shrubs for both sites. Herbicide treatments conducted for three years along with burns every two years have successfully reduced the shrub cover to less than 2 percent. In 2019 annual burns were implemented. A total of 112 species were observed within the hydric pine flatwood adjacent to Dry Pond from pedestrian transects, a significant increase from the two-herbaceous species recorded during the baseline documentation.

Date 10/24/22 Collector: David Clayton

Table 9. Transect 6. Species Cover and Occurrence (Hydric Pine Flatwoods)

Scientific Name	Species	Percent Cover
<i>Andropogon glomeratus</i>	Bushy bluestem	6.5
<i>Aristida stricta</i>	Wiregrass	8.3
<i>Centella asiatica</i>	Spadeleaf	6.3
<i>Coleataenia rigidula</i>	Red top panicum	1
<i>Cyperus sp</i>	Cyperus	0.2
<i>Dichantheium sp.</i>	Witch grass	0.6
<i>Edrastima uniflora</i>	Clustered mille grains	1.3
<i>Eupatorium morhii</i>	Mohr's thorough wort	1
<i>Euthamia caroliniana</i>	Slender flattop goldenrod	8
<i>Hypericum cistifolium</i>	Round-pod St. John's wort	2
<i>Hypericum microsepalum</i>	Flatwoods St. Johns-wort	1
<i>Kelochloa verrucosa</i>	Warty panicgrass	25.3
<i>Lachnanthes caroliniana</i>	Carolina redroot	3
<i>Lachnocaulon anceps</i>	Bogbutton	0.5
<i>Ludwigia leptocarpa</i>	Anglestem seed box	0.2
<i>Lycopus rubellus</i>	Water horehound	0.6
<i>Lyonia lucida</i>	Fetterbush	1.5
<i>Muhlenbergia expansa</i>	Cutover muhlygrass	0.6
<i>Pieris phyllyreifolia</i>	Pieris	0.2
<i>Rhexia alifanus</i>	Savanna meadow beauty	0.2
<i>Rhexia mariana</i>	Pale meadow beauty	3
<i>Rhexia virginica</i>	Handsome harry	0.2
<i>Rhynchospora sp.</i>	Beaksedge	3.5
<i>Scleria sp.</i>	Nutrush	1.3
<i>Solidago odora</i>	Pine barren goldenrod	6.3
<i>Sphagnum sp.</i>	Sphagnum moss	10.6
<i>Woodwardia virginica</i>	Virginia chain fern	1.3
<i>Xyris caroliniana</i>	Carolina yellow-eyed grass	0.6
<i>Xyris floridana</i>	Florida yellow-eyed grass	1.3

Scientific Name

Species

Percent Cover

Bare ground

2.1

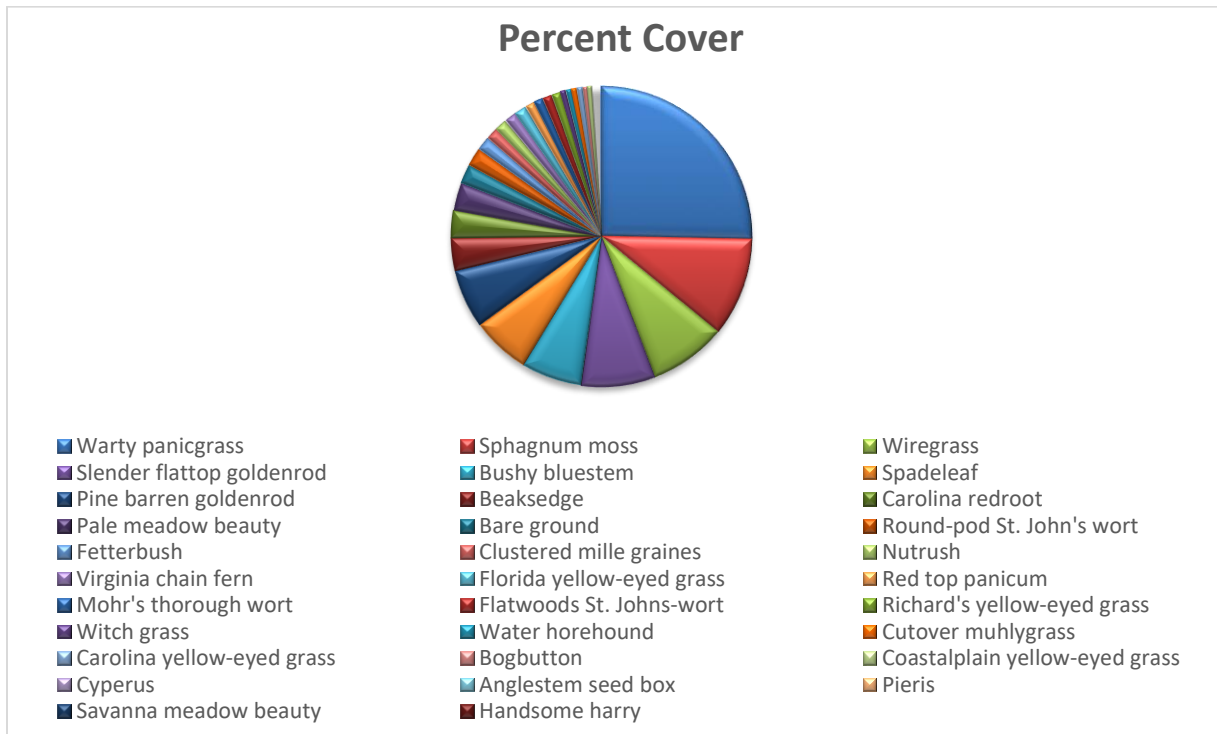


Figure 21. Transect 6. Species cover and occurrence (Hydric Pine Flatwoods Restoration)

Table 10. Transect 7. Species and Occurrence (Hydric Pine Flatwoods Restoration)

Date 10/24/22 Collector: David Clayton Wildlife observed: None

Scientific Name	Species	Percent Cover
<i>Andropogon glaucopsis</i>	Purplebluestem	0.5
<i>Andropogon glomeratus</i>	Bushy bluestem	13
<i>Andropogon virginicus</i>	Broomgrass	3
<i>Aristida stricta</i>	Wiregrass	18.3
<i>Centell asiatica</i>	Centella	0.3
<i>Cliftonia monophylla</i>	Black titi	1.8
<i>Edrastima uniflora</i>	Clustered mille grains	0.3
<i>Euthamia caroliniana</i>	Flattop goldenrod	5.5
<i>Gelsenium sempervirens</i>	Florida jessamine	0.2
<i>Leucothoe racemosa</i>	Stagger bush	0.2
<i>Pinus elliotii</i>	Slash pine	0.2
<i>Rhexia mariana</i>	Pale meadow beauty	0.2
<i>Rhexia virginica</i>	Handsome Harry	0.2
<i>Rhus copallinum</i>	Winged sumac	0.2

Scientific Name	Species	Percent Cover
<i>Rhynchospora sp.</i>	Rhynchospora	3.1
<i>Smilax laurifolia</i>	Greenbriar	0.5
<i>Sphagnum sp.</i>	Sphagnum	5
<i>Vaccinium corymbosum</i>	Highbush blueberry	0.3
<i>Woodwardia virginica</i>	Virginia chain fern	3.1
<i>Xyris caroliniana</i>	Yellow eyed-grass	1.1
	Bare ground	16

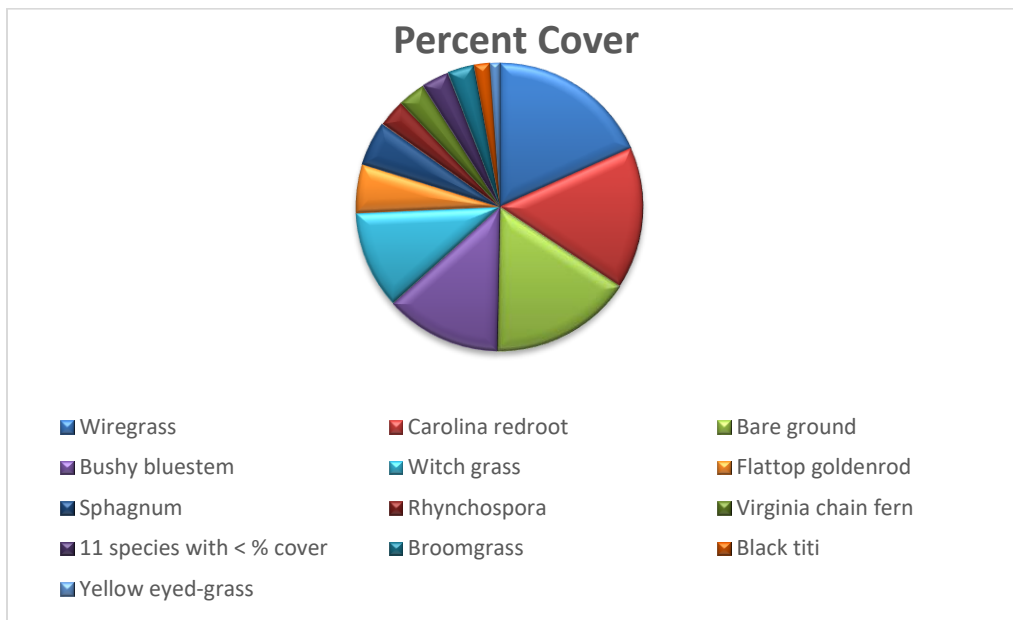


Figure 22. Transect 7. Species cover and occurrence (Hydric Pine Flatwoods)

UMAM Polygon V1, Management Unit 5, Inland Ponds, and Sloughs

UMAM Polygon V1, Management Unit 5 consists of 24.880 acres of a dammed slough (Dykes Mill Pond) restored to slough/marsh. Reclamation activities within this polygon include the removal of Dykes Mill Pond dam, spanning the gap with a railcar bridge, and planting of cypress and black gum saplings. Dykes Mill Pond was removed in August of 2006 and bridge construction completed in April 2007. Planting of cypress and black gum trees occurred in fall of 2007. Since the removal of the dam, water levels have been reduced by two feet in depth. Most of Dykes Mill Pond is dominated by water lilies and other aquatic submerged vegetation.

In 2022, this transect was not sampled. Due to early cold weather the water lily leaves had senesced and the cover would be inaccurate. This transect will be monitored again in 2023.

Qualitative Monitoring

Materials and Methods

Qualitative vegetation monitoring includes an assessment of the vegetation, both ground cover and planted trees, wildlife use observations, and general habitat health. Pedestrian surveys increase site coverage and include a 30+ minute meandering walk-path. The pedestrian walk-path continued if species were being added; however, once additional species were not recorded for 3 minutes the survey was complete. Representative photos and a community description were provided for each walk-path. Plants were listed in the data sheet in the following categories (tree, shrub, vine or herbaceous) to give a better understanding of community composition. Wildlife observations were recorded for each walk-path. Figure 9 provides the location and coverage of transects and site photos can be found on the NFWFMD website at <https://www.nfwfwater.com/Water-Resources/Regional-Wetland-Mitigation-Program>

Results and Discussion

A total of 13 pedestrian transects were located at the SHLMB (Figure 9). Three pedestrian surveys are in Management Unit 1, portions of UMAM Polygon IV, one in Management Unit 2, UMAM Polygon V, one in Management Unit 4, portions of UMAM Polygon IV, four in Management Unit 10, Polygon III, three in Management Unit 12, UMAM Polygon I, and one in Management Unit 14, portions of UMAM Polygon IV.

Management Unit 1, UMAM Polygon IV, Preserved High Quality Forested and Herbaceous Wetlands (M8 and M9)

Management Unit 1, UMAM Polygon IV consists of 574.839 acres of a wide variety of preserved wetland habitats including FLUCCS: 621 – Cypress, 617 – Mixed Wetland Hardwoods, 644 – Emergent Aquatic Wetlands, 611 – Bay Swamps, 641 – Freshwater Marshes, 616 – Inland Ponds and Sloughs, 640 – and Vegetated Non-Forested Wetlands. The management goal for this polygon is preservation of the existing high-quality wetlands. Two of the pedestrian survey paths (M8 and M9) in Management Unit I, UMAM Polygon IV, were in cypress dominated wetlands. During the baseline monitoring, 38 species were observed in M8, while 32 species were observed in M9. Wildlife was abundant.

In 2021, a total of 56 species were observed along M8, and 55 species along M9. Plants appear vigorous and thriving with good diversity. No nuisance or exotic species were observed.

In 2022, a total of 54 species were observed along M8, and 51 species along M9. Plants appear vigorous and thriving with good diversity. No nuisance or exotic species were observed.

Interim Success Criteria:

Interim success criteria have been met for this area. These include exotic vegetation cover < 1 percent per acre, nuisance vegetation cover < 5 percent per acre, and maintaining or improving in ecological function. Water levels were at or above normal pool for most of 2022.

Management Unit 2, UMAM Polygon V, Hydric Pine Flatwoods

Management Unit 2, UMAM Polygon V consists of 146.678 acres of FLUCCS 635 hydric pine flatwoods. The management goal for this polygon includes the enhancement and restoration of the degraded hydric pine flatwoods. Two pedestrian transects (M10 and M11) located in Management Unit 2, UMAM Polygon V. Each of these degraded hydric pine flatwoods were dominated by dense shrub cover and species during baseline monitoring.

In 2021, a total of 114 species were observed along the meandering transect of M10. This area continues to develop and has good diversity. A total of 56 species were observed along M11. These sites continue to develop and diversity increase. No hog damage was observed within the restoration area in 2021.

In 2022, a total of 112 species were observed along the meandering transect of M10. This area continues to develop and has good diversity. A total of 54 species were observed along M11. These sites continue to develop and diversity increase. No hog damage was observed within the restoration area in 2022.

Interim Success Criteria:

Interim success criteria have been met for this area. No exotic species were observed, and shrub cover has been maintained at or lower than 5 percent. Herbaceous groundcover and diversity continue to increase. Prescribed burns have been conducted in accordance with fire management plan on an annual rotation.

Management Unit 10, UMAM Polygon III, Xeric and Live Oak

Management Unit 10, UMAM Polygon III consists of 493.852 acres of FLUCCS 421 – Xeric Oak and 427 – Live Oak. Management goals include preservation, reintroduction of fire, removal of oaks and hardwoods, planting of longleaf pine, and exotic species control. Four transects were located within Polygon 10, M1, M2, M12 and M13). During baseline monitoring, 44 species were observed along M1, as were 29 species within M2, 26 species within M12, and 54 species within M13. In Transect M1, Florida threatened species, Gulf coast lupine (*Lupinus westianus*), and Gopher tortoise burrows have been observed scattered throughout the xeric communities.

In 2021, 100 species were found along Transect M1. This area is a combination of several habitats as it grades towards the pond. A total of 81 species were observed within M2. A total of 72 species were observed within M12 while Transect M13 had 83 species.

In 2022, 91 species were found along Transect M1. This area is a combination of several habitats as it grades towards the pond. A total of 79 species were observed within M2. A total of 74 species were observed within M12 while Transect M13 had 81 species.

Interim Success Criteria:

Interim success criteria have been met for this area. No nuisance native or exotic vegetation have been observed, except for a small patch of Bahia grass at M1's entrance. Diversity is good and continued burns within these areas will maintain a healthy sandhill community. Wiregrass cover is excellent and oaks and other hardwood cover have been reduced to appropriate levels.

Management Unit 11, UMAM Polygon II, Upland Sand Pine or Slash Pine Plantations

Management Unit 11, UMAM Polygon II consists of 383.484 acres of FLUCCS 411, Longleaf Pine/Wiregrass restored from slash or sand pine plantations.

The restoration goal for this area is to restore the sites to a sandhill community from a slash pine plantation. Management activities included the removal of planted sand pines, reintroduction of burns, re-planting with longleaf pine, and the addition of wiregrass as needed. Slash and sand pine trees were harvested from April to November 2007 followed by winter burns. Transect M5 is located within Management Unit 11, UMAM Polygon II. Observations from the baseline monitoring in 2006, indicated six trees, seven shrubs, two vines, and 35 herbaceous species.

In 2021, a total of 86 species were observed along M5. Species diversity and wiregrass cover is like sandhills within the region. The community continues to develop.

In 2022, a total of 88 species were observed along M5. Species diversity and wiregrass cover is like sandhills within the region. The community continues to develop.

Interim Success Criteria:

The interim success criteria have been met for this area. No nuisance or exotic species were observed. Wiregrass is the dominant species. The ground cover is diverse and typical of a sandhill, and the planted longleaf pines are 25' to 30' tall.

Management Unit 12, UMAM Polygon 1, Sandhill

Management Unit 12, UMAM Polygon 1 consists of 263.52 acres of FLUCCS: 411 – Longleaf Pine / Wiregrass (Mesic Pine Flatwoods) restored from 421 – Xeric Oak habitat.

The goal for this polygon was to restore a diverse sandhill. Fire was reintroduced in 2004 and the once dominant woody goldenrod and oak cover has been replaced by wiregrass and diverse sandhill species. Removal of oaks \leq 12 inches DBH occurred in the summer of 2005 and the area was replanted with longleaf pine. The sandhill is diverse and high quality with an excellent herbaceous species composition. Two transects (M3 and M4) were located within this polygon. Baseline documentation in 2006 observed a total of 35 species (seven trees, two shrubs, two vines, and 24 herbs) within pedestrian Transect M3, while 68 species (eight trees, nine shrubs, two vines and 49 herbs) were observed within M4. These two areas are the two most diverse upland areas of the bank and often have over 90 species observed. Floristically, they are typical of high quality sandhills within the region.

In 2021, a total of 88 species were observed along M3 while 121 species were observed along M4. These two areas are the two most species diverse uplands at the bank, often with greater than 90 species. Floristically, they are typical of high quality sandhills within the region.

In 2022, a total of 85 species were observed along M3 while 100 species were observed along M4. These two areas are the two most species diverse uplands at the bank, often with greater than 90 species. Floristically, they are typical of high quality sandhills within the region.

Interim Success Criteria:

This polygon has met the restoration goals set forth in the interim success criteria. Controlled burns within this polygon have greatly reduced the cover of woody goldenrod and oaks. Successive burns have increased diversity and wiregrass cover. Oaks have been reduced to less than 150 trees per acre and the herbaceous vegetation is dominated by wiregrass.

Management Unit 14, portions of UMAM Polygon IV, Lakes

Management Unit 14, portions of UMAM Polygon IV consists of 164.958 acres of FLUCCS 520, lakes. The goal for this polygon is the preservation of the lake and aquatic habitat. One pedestrian transect (M6) was placed within the polygon around Garret Pond and another M7 at Dykes Mill Pond. A zone of Smooth barked St. John's wort and seedlings was observed just above normal pool adjacent to Garret Pond.

In 2021, water levels were above normal pool for most of the year. A total of 85 species were observed along M6, while 51 species were observed along M7. Vegetation appears healthy and vigorous.

In 2022, water levels were above normal pool for most of the year. A total of 81 species were observed along M6, while 48 species were observed along M7. Vegetation appears healthy and vigorous.

Interim Success Criteria:

Wetland vegetation is the dominant within both sites. Species appear healthy, diverse, and vigorous. Success criteria for this area have been met.

Certification

I certify that this report represents true accurate and representative description of the activities and site conditions at the time of this report.

David C. Clayton
Qualified Mitigation Specialist
Senior Environmental Scientist