

NORTHWEST FLORIDA WATER MANAGEMENT DISTRICT

REQUEST FOR QUOTES

2023-2024 DEBRIS REDUCTION AND REMOVAL

CONTRACTUAL SERVICES FOR RECOVERY EFFORTS AND DEBRIS REDUCTION CLEARANCE SERVICES
FROM PRE-QUALIFIED VENDORS AWARDED CONTRACTS VIA REQUEST FOR PROPOSAL 20-001

OVERVIEW

This Request for Quotes (RFQ) is for recovery efforts and debris reduction clearance services (debris services) in accordance with NFWFMD Request for Proposals (RFP) 20-001 and the Agreements that resulted from RFP 20-001. The pre-qualified contractors selected through RFP 20-001 are the only entities permitted to submit a quote in response to this RFQ.

The specified Work involves debris reduction/mulching and/or debris removal services on ten units totaling approximately 767 acres, to be completed by **March 31, 2024**.

Units 1-3 are located in Calhoun County on the Chipola River Water Management Area, Unit 4 is located in Liberty County on the Apalachicola River Water Management Area, and Units 5-10 are located in Bay and Washington counties on the Econfina Creek Water Management Area.

Work will be awarded to Contractors by Task Order (TO), a draft copy of which is included in this RFQ. The TO will be adjusted according to the award of the Work. The anticipated Term of the work will begin in October 2023 with all work to be completed by March 31, 2024.

The Work will be awarded by **Unit** (Units 1-3 are combined and will be awarded together) and in the manner that best serves the District to ensure completion of the specified services within the specified timeframe. Unit pricing will be the primary factor that determines how the Work will be awarded but is not the sole factor. At its sole discretion, the District may elect to not award all Units and may negotiate pricing with companies submitting quotes.

SUBMITTING QUOTES

- Please send quote via email **by 2:00 pm ET on August 3, 2023**.
- Companies are not required to quote all Work Groups.
- Companies not submitting a quote for any of the Work Groups must submit a “No Quote” response.
- Submit Quotes on the attached one-page Quote Sheet to Benjamin.Faure@nwfwater.com
Quote Sheet must be returned as a pdf.

QUOTE SHEET
NWFWMD RECOVERY EFFORTS AND DEBRIS REDUCTION CLEARANCE SERVICES
2023-2024 DEBRIS REDUCTION AND REMOVAL

Submit this sheet to: Benjamin.Faure@nfwwater.com by 2:00 PM ET, August 3, 2023.

Quotes received after the above deadline will be rejected.

Company:					
Quote Prepared by:					
Date:					
Work Group/ Unit #	Contract Acres	Existing Vegetation	Work Operation	Per Acre Rate	Unit Total
Altha Tract- Units # 1-3	57	Mixed Hardwoods and Pine	Debris Reduction/Mulching- Preserve Residual Trees		\$ -
Beaverdam Creek- Unit # 4	26	Mixed Hardwoods and Pine	Debris Reduction/Mulching- Preserve Residual Trees		\$ -
Howard Swamp- Unit # 5	171	Dead Standing and Downed Trees	Debris Removal/Haul off or Pile Burn Preserve Residual Trees		\$ -
Howard Swamp- Unit # 6	304	Thinned Slash Pine with palmetto, gallberry, and titi understory	Debris Reduction/Mulching Preserve Residual Trees		\$ -
Bay Gall- Unit #7	47	Unit 7A- Dead Standing and Downed Trees(7 Acres) Unit 7B- Thinned Slash Pine with palmetto, gallberry, and titi understory (40 Acres)	Unit 7 A- Debris Removal/Haul off or Pile Burn Unit 7 B- Debris Reduction/Mulching Preserve Residual Trees		\$ -
Kennedy Bay- Unit #8	149	Partially thinned Slash Pine with palmetto, gallberry, titi understory	Debris Reduction/Mulching- Preserve Residual Trees		\$ -
Work Group/ Unit #	Contract Acres	Existing Vegetation	Work Operation	Lump Sum Price	Unit Total
Rattlesnake Lake South-Unit 9	10	Mixed Hardwood and Pine with a +/- 3 acre portion of dead Sand Pine	Debris Removal and Reduction- Per Draft Task Order Instructions		\$ -
Whitewater Lake- Unit 10	3	Mixed Hardwood and Pine	Debris Removal and Reduction- Per Draft Task Order Instructions		\$ -
Authorized Signature:				Total All Units	\$ -

Assuming your company receives a Task Order and Notice to Proceed by October 15, 2023 Enter the number of acres this company can complete by March 31, 2024

The award of task orders for the work outlined in this Request for Quotes is subject to approval of the District's FY 2023-24 budget.

Draft Task Order

(Final Task Order acreages and Contractor Group assignments will be adjusted according to the award of the Work)

NORTHWEST FLORIDA WATER MANAGEMENT DISTRICT

CONTRACTUAL SERVICES FOR DEBRIS REDUCTION CLEARANCE SERVICES
BY PRE-QUALIFIED VENDORS AWARDED CONTRACTS VIA
REQUEST FOR PROPOSAL 20-001

AGREEMENT No. 20-XXX;

TASK ORDER No. XX

EXHIBIT A - SCOPE OF SERVICES

General Description and Location

This Task Order (TO) is for debris reduction/mulching and/or debris removal services on ten units totaling approximately 767 acres, to be completed by **March 31, 2024**. Units 1-3 are located in Calhoun County on the Chipola River Water Management Area, Unit 4 is located in Liberty County on the Apalachicola River Water Management Area and Units 5-10 are located in Bay and Washington counties on the Econfina Creek Water Management Area.

The Work Groups have been identified and delineated on the attached Exhibit Maps. The Work Groups will be reviewed by the CONTRACTOR and agreed upon prior to the operations with assistance from the DISTRICT. All Work is to be conducted in accordance with NFWFMD Agreements issued as the result of RFP 20-001, and any additional schedules and specifications contained in the TO.

The objectives for the debris reduction Work Groups are to reduce debris and to reduce wildfire fuel accumulation and safety hazards without damaging residual trees and facilities. Contractors are encouraged, but not required, to utilize vegetation for fiber production, fuelwood, or other beneficial uses.

The objectives for the debris removal Work Groups are to remove a significant amount of dead standing and downed timber, understory vegetation, and/or construction debris from the units and haul away or pile burn the vegetative debris. Construction debris must be hauled away to an acceptable landfill or recycling center.

Note-units 7, 9, and 10 have a combination of debris removal and debris reduction work operations.

Contact Persons

The District's contact persons are:

Coakley Taylor (Site Manager Units 1-4) who can be reached at 850-722-9919 (office) 850-272-2737 (cell) and email at Coakley.Taylor@nwfwater.com

Eric Toole (Site Manager Units 5-10) who can be reached at 850-722-9919 (office) 850-726-0385 (cell) and email at Eric.Toole@nwfwater.com

Benjamin Faure (Project Manager) who can be reached at 850-722-9919 (office), 850-510-0399 (cell/text), or via email at Benjamin.faure@nwfwater.com

Carol Bert (Contract Manager) who can be reached at 850-539-5999 (office switchboard), 850-539-2634 (office direct), or via email at Carol.Bert@nwfwater.com

Hunting/Public Use Information

District lands are open to public use year-round, including hunting. Contractors must be aware of public users and plan and execute their Work accordingly. Sites with public recreation amenities may be closed to protect public safety. Placement of signage before and during the Work is allowed and encouraged. Hunting seasons, quota hunt dates, and other information and regulations can be found online at: <http://myfwc.com/hunting/wma-brochures>

Work Completed and Billing

Units 1-8 - The District anticipates monthly billing with measured stages of completion. Acreage where debris has been completely reduced/removed in accordance with the specifications Contained in Table 1 will be considered 100 percent complete. Acreage where debris has been piled, but not reduced or removed according to the specifications will be considered 50 percent complete. After the Contractor has notified the District that a portion of a Unit is complete, District field staff will inspect the Unit for contract compliance. Only those acres within the unit determined to meet debris clearance and reduction goals as specified will be authorized for billing and payment. The District staff will map the area(s), measure and quantify the acres mulched and debris reduced/removed. The Contractor will provide invoices based on this measurement. The District may also employ the use of aerial drone photography and/or video to document the Work progress and completion.

Units 9-10 - The District anticipates a lump sum payment for the work upon completion. After the Contractor has notified the District that all work in the Unit is complete, District field staff will

inspect the unit for completion and invoice payment. **All work items in these two units must be completed before invoices are approved for payment.**

The Vegetative Debris Management Costs Per Acre and Lump Sum bid pricing provided by the Contractor shall be inclusive of all costs affiliated with completing the Work, including but not limited to employee pay, benefit costs, insurance, bonds, fuel, vehicles, transportation, mobilization and demobilization, equipment, communication equipment, GPS units, cameras, PPE, power tools, hand tools, and any other costs necessary for the contractor to meet project specifications. Any needed fireline preparation and rehabilitation and all planning, permitting, administrative, contract management, and invoicing costs are included.

Task Order Performance Bond

The Contractor shall provide a Task Order Performance Bond in the amount of twenty five percent (25%) of the Task Order amount to be held by the District to insure contract compliance and to pay any damages sustained by the District due to the Contractor's negligence or breach of contract. A Notice to Proceed shall be issued for the TO Work only after the District has received the Contractor's Task Order Performance Bond and other required paperwork. Task Order Performance Bonds provided by a check will be deposited and the amount will be returned to the Contractor within 30 days of successful completion of all terms and conditions of the TO.

SCOPE OF WORK

(The Scope of Work below will be adapted to and included in each Task Order issued for the Work Groups contained in this RFQ).

Background

Hurricane Michael severely impacted District-owned land within the Econfina Creek Water Management Area in Bay & Washington Counties, the Chipola River Water Management Area in Calhoun County, and the Apalachicola River Water Management Area in Liberty County. The District has identified approximately 767 acres that currently require hurricane debris management and recovery services. The Work Groups are illustrated on the attached Exhibit Maps.

Description of Work

- A. For Work Groups with the Work Operation specified as “**Debris Reduction/Mulching**” in Table 1, (Units 1, 2, 3, 4, 6, 7B, and 8), the Contractor shall remove from the project area:
- All downed trees greater than 4” (four inches) in diameter;
 - All standing dead trees greater than 4” (four inches) in diameter at breast height (DBH) (including all standing stems broken off above the base);
 - All standing live trees greater than 4” (four inches) DBH that are leaning more than 25 degrees from vertical.
 - All standing Laurel Oak, Water Oak and Sweetgum up to 15” (fifteen inches) in diameter at breast height
 - Reduce all vegetative debris to ground level
- B. For Work Groups with the Work Operation specified as “**Debris Removal**” in Table 1, (Units 5, 7A, 9, and 10), the Contractor shall remove the debris from the unit or pile burn the debris as outlined in the specified Instructions on Table 1. All Construction debris including, fencing, dimensional lumber, metals and other construction related materials must be disposed of in an appropriate landfill or recycling center and may not be pile burned.

ALL WORK MUST BE COMPLETED BY March 31, 2024.

Table 1- Work Group, Contract Acres and Work Operation Instructions

Work Group (Name & Unit #)	Contract Acres	Existing Vegetation	Work Operation Instructions
Altha Tract (Units 1-3)	57 Acres	Mixed Hardwood & Pine	<u>Debris Reduction/Mulching</u>
Beaverdam Creek (Unit 4)	26 Acres	Mixed Hardwood & Pine	<u>Debris Reduction/Mulching</u>
Howard Swamp (Unit 5)	171 Acres	Dead Standing and Downed Trees	<u>Debris Removal- Cut and Remove</u> all Dead standing and downed trees . Cut stumps 6 inches or less above ground. Haul off all debris <u>or</u> pile and burn. Preserve Residual Live

			Trees. <u>LOW GROUND PRESSURE EQUIPMENT REQUIRED.</u>
Howard Swamp (Unit 6)	304 Acres	Pine Flatwoods- 40 year old thinned slash pine with palmetto, gallberry, and titi understory	<u>Debris Reduction/Mulching.</u> <u>LOW GROUND PRESSURE EQUIPMENT REQUIRED.</u>
Bay Gall (Unit 7)	47 Acres	Dead Standing and Downed Trees. Pine Flatwoods- 40 year old slash pine with palmetto, gallberry, and titi understory	Unit 7.A- Unit <u>north</u> of Highway 20 (+/- 7 acres)- <u>Debris Removal- Cut and Remove</u> all Dead standing and downed trees. Cut stumps 6 inches or less above ground. Haul off all debris <u>or</u> pile and burn. Preserve Residual Live Trees. Unit 7.B-Unit <u>south</u> of Highway 20 (+/- 40 acres)- <u>Debris Reduction/Mulching- LOW GROUND PRESSURE EQUIPMENT REQUIRED.</u>
Kennedy Bay (Unit 8)	149 Acres	30-Year-old partially thinned slash pine with saw palmetto, gallberry and titi understory	<u>Debris Reduction/Mulching-</u> <u>LOW GROUND PRESSURE EQUIPMENT REQUIRED.</u>
Rattlesnake lake South (Unit 9)	10 Acres	Mixed Hardwoods and Pines with a +/- 3-acre portion	<u>Debris Removal-</u> Remove all live and dead standing or downed sand pine within the Project Area (including stumps) Remove all other dead standing and down trees within the Project Area (including limbs)

		of dead sand pine	<p>Remove all fencing material within the Project Area.</p> <p>Mow and reduce all other vegetative debris within the project Area to include grasses, saw palmetto, bushes, shrubs and trees (trees with a DBH of 6" or less).</p>
Whitewater Lake (Unit 10)	3 Acres	Mixed Hardwood and Pine with Damaged buildings and boardwalks	<p><u>Debris Removal-</u></p> <p>Demolish and Remove Camping Platform and Restroom Platform.</p> <p>Demolish and Remove Boardwalk and Dock adjacent to Camping Platform.</p> <p>Remove all live and dead standing or downed sand pine within the project area (including stumps).</p> <p>Remove all other dead standing and down trees within the Project Area.</p> <p>Remove all fencing material within the Project Area.</p> <p>Mow and reduce all other vegetative debris within the Project Area to include grasses, saw palmetto, bushes, shrubs and trees (trees with a DBH of 6" or less).</p> <p>Preserve all Live Oak, Slash Pine and Longleaf Pine with a DBH of 6" or greater.</p>

Methods

1) **Debris Reduction/Mulching Units**

- a) For all work groups (or portions thereof) identified as Debris **Reduction/Mulching** listed in Table 1 (Units 1, 2, 3, 4, 6, 7B, and 8), the Contractor will select the most efficient method or combination of methods for removing the trees and vegetative debris, including such techniques as cut and haul to an approved disposal or reuse facility; onsite

air curtain incineration; pile and burn in areas that will not affect residual trees, onsite chipping with removal, onsite chipping/mulching with distribution of chips, etc.

- b) The special conditions listed below must be taken into consideration for any selected vegetative debris management method.

2) Debris Removal Units

- a) For all work groups (or portions thereof) identified as **Debris Removal** listed in Table 1 (Unit 5, 7A, 9, and 10), the Contractor will select the most efficient method or combination of methods for removing the trees and vegetative debris as specified, including such techniques as cut and haul to an approved disposal or reuse facility; onsite air curtain incineration; pile and burn in areas that will not affect residual trees. Onsite mulching and spreading of chips is not permitted in these units except for mowing of smaller shrubs and other herbaceous vegetation.

3) Low Ground Pressure Equipment Required

- a). Units 5,6,7, and 8 are located within wet flatwoods natural communities which are seasonally saturated, depending on rainfall accumulations. These units will require the use of equipment with low ground pressure to avoid rutting or damaging of soils and are best accessed from October through March during drier periods. The District retains the right to shut down the Work in inclement weather if damage to the unit is deemed by the Project Manager to be too severe.

Special Conditions- All Work Groups:

1. All of the debris reduction/removal groups may contain wetlands, steep slopes, floodplain areas, creek banks, wet areas, streams, ponds, and karst features (hereinafter referred to as "Sensitive Areas") that are not specifically mapped or excluded from the Work Group maps. Because precise mapping of the Sensitive Areas is very difficult, the Work Groups have been delineated in a manner that includes Sensitive Areas. Conventional equipment used to perform debris cleanup would likely cause unacceptable impacts to these areas without the use of specialized materials and techniques. **Sensitive Areas shall not be impacted by the Work.** The Contractor has the option of performing debris cleanup or removal within Sensitive Areas in a manner that does not impact the Sensitive Areas, or the Contractor may elect to not perform debris cleanup within Sensitive Areas. The acreage of Sensitive Areas not receiving debris cleanup services will be excluded from invoicing.

2. Karst features (sinkholes, crevasses, exposed limerock, etc.) may be present within the Work Groups and shall be protected during all operations. Debris shall be removed around and within these features using methods that do not result in damage to the karst features.
3. The Contractor shall coordinate closely with the District's Site Manager when working close to the boundaries of the Work Group to ensure all Work is conducted on District land and no impacts occur on adjacent private lands as a result of the Work.
4. If access to any part of the Work Group is across private land, the Contractor shall be responsible to the private landowner concerning such access and shall conduct any repairs or remediation needed on the private lands.
5. The Contractor must take care not to damage fences, overhead and underground utilities, gates, and any other items of value owned by the District or neighboring property owners. Contractor will be held responsible for all damages.
6. The Contractor shall not bury onsite any debris, garbage, trash, or other materials resulting from or associated with the Work. Ash from burning operations may remain onsite, provided that it is not in piles or disposed of in a manner that would prevent vegetation from growing.
7. Work will occur only during daylight hours, unless otherwise approved by District.
8. The Work area is located on public lands within the Econfina Creek WMA. The Contractor shall be responsible for posting appropriate construction site closure and "No Trespassing" signs at appropriate locations within the Work areas as needed, which shall be removed after completion of the Work. The Contractor may utilize any existing District gates and may place temporary gates, fences and/or barricades, if needed. Contractor may place their own padlocks on District gate(s) and shall ensure that the District's locks and the locks of other authorized users on the gates remain functional for access by District staff and other authorized users. The Contractor shall be responsible for all site and equipment security and may place a temporary residence (RV/Motorhome, etc.) for security purposes and/or construction trailer, equipment storage lockers, etc., as needed, within an area approved by the District's Site Manager. There is no electricity, running water, or sewage disposal within the Work area. Trespassing, theft, vandalism and other illegal activities shall be immediately reported to local law enforcement authorities.
9. The Contractor must exercise care to prevent damage to all residual live trees located within the project areas. Special care shall be given to prevent any damage to any trees not designated for removal by the District. Standing trees not intended for removal will not be used in any manner to facilitate the Contractor's operations.

10. Debris remaining onsite shall not be piled nor left gathered around or near the base of remaining live trees.
11. Stumps from vertical dead and leaning trees shall be cut as close to the ground as possible and shall not be higher than six inches (6") above the ground except where otherwise authorized by the District. Felled trees with root balls attached shall be cut as close to the root ball as possible.
12. All "lodged" trees shall be freed and removed.
13. The District retains the right to close down operations in inclement weather if soil disturbance in the project area or damage to roads is deemed by the District to be too severe.
14. The Contractor shall adhere to and implement all applicable federal, state, and local environmental laws and regulations as well as applicable best management practices (BMPs) for silvicultural operations as outlined in the latest version of the Florida Silviculture Best Management Practices Manual. The Contractor is responsible for securing any forestry authorizations that may be required under Chapter 40A-44, Florida Administrative Code, and/or any other local, state, or federal permit or authorization that may be required to conduct the vegetation and debris removal operations and shall remain in full compliance with all governing regulations during the course of the Work. All burning operations shall be managed by a burn manager certified by the Florida Forest Service, shall be authorized as certified burns by the Florida Forest Service and shall be performed in accordance with Chapter 590, Florida Statutes and Chapters 62-256 and 51-2, FAC.
15. The Contractor shall accept roads in their present condition and accept responsibility and expenses for any improvements in roads necessary to cut, haul, manage, and/or remove the designated vegetation. During operations the Contractor shall maintain all roads in a usable condition, suitable for the vehicular traffic to which the road is normally subjected. The Contractor is solely responsible for maintaining the roads and making them serviceable prior to use, as approved by the District. Ruts on roads will be back bladed by the Contractor upon completion of the Work and when requested by the District during the Work. The District retains the right to close down the operations in inclement weather if damage to roads or the project area is deemed by the District as becoming too severe.
16. Maintenance of equipment may be conducted on-site only if all product containers, fluids and waste, including used oil, hydraulic oil and all other disposable products, are properly

captured and contained, and removed from the site for proper disposal. Petroleum-based fluid spills smaller than 5 (five) gallons that occur from equipment must also be reported to the District, treated with appropriate absorbent and/or other neutralizing agent, and followed by removal and proper disposal of affected soils. Petroleum-based fluid spills 5 (five) gallons or greater in a concentrated spot shall be reported to the District and cleaned up properly. Spills that are 25 gallons or greater must be reported to the Florida Department of Environmental Protection (“DEP”) with a field inspection made by DEP, and the Contractor must handle such spills according to DEP instructions. ***Spills must not be buried with soil and/or sand and left untreated.*** Equipment that constantly leaks fluid and/or causes other problems on site shall be shut down by a District representative and the Contractor may be required to remove the problem equipment from the site.

17. The Contractor shall be responsible for seeing that the Work area shall remain free from any litter such as oil cans, drums, paper, foam products and other refuse.
18. The Contractor shall provide at least one portable toilet for use by its employees and subcontractors and shall ensure that the portable toilet is serviced on a weekly or more frequent basis.
19. To minimize the possibility of transporting and spreading exotic plant species, equipment must be cleaned of all dirt and plant material prior to moving onto District land.
20. If warranted by the specific operations employed by the Contractor, the Contractor shall provide and maintain a minimum of two (2) signs stating: “Trucks Entering and Leaving Highway” (or similar acceptable language) and place the signs in appropriate locations.
21. Gopher tortoises are a protected species and may be present within the project areas and in other areas throughout the property. Work crews must prevent impacts to tortoises and their burrows by avoiding burrow aprons and tunnels and watching out for individual tortoises during all operations. Gopher tortoises shall not be injured, captured, moved or removed from District project areas.

Exhibit Map A

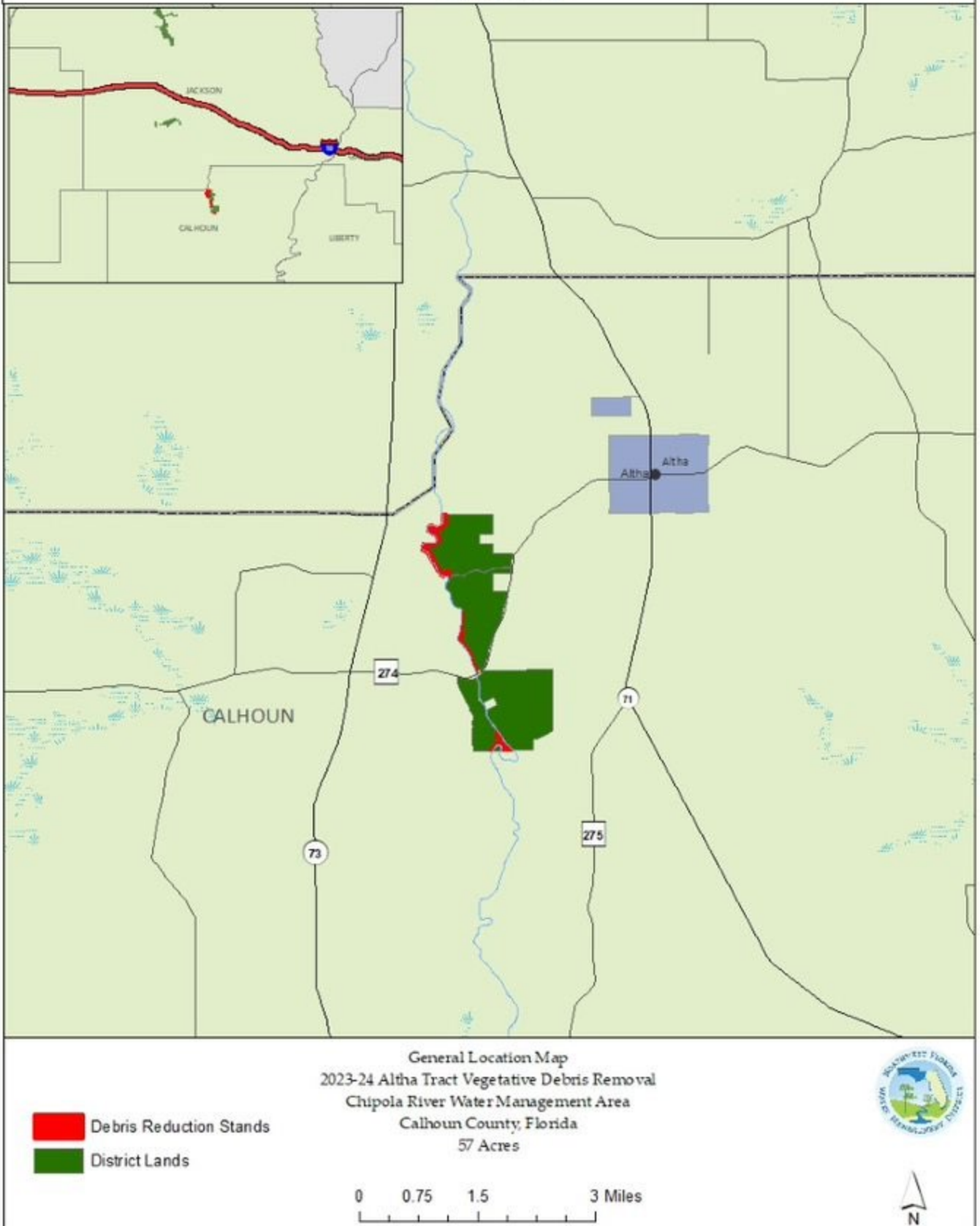


Exhibit Map 1

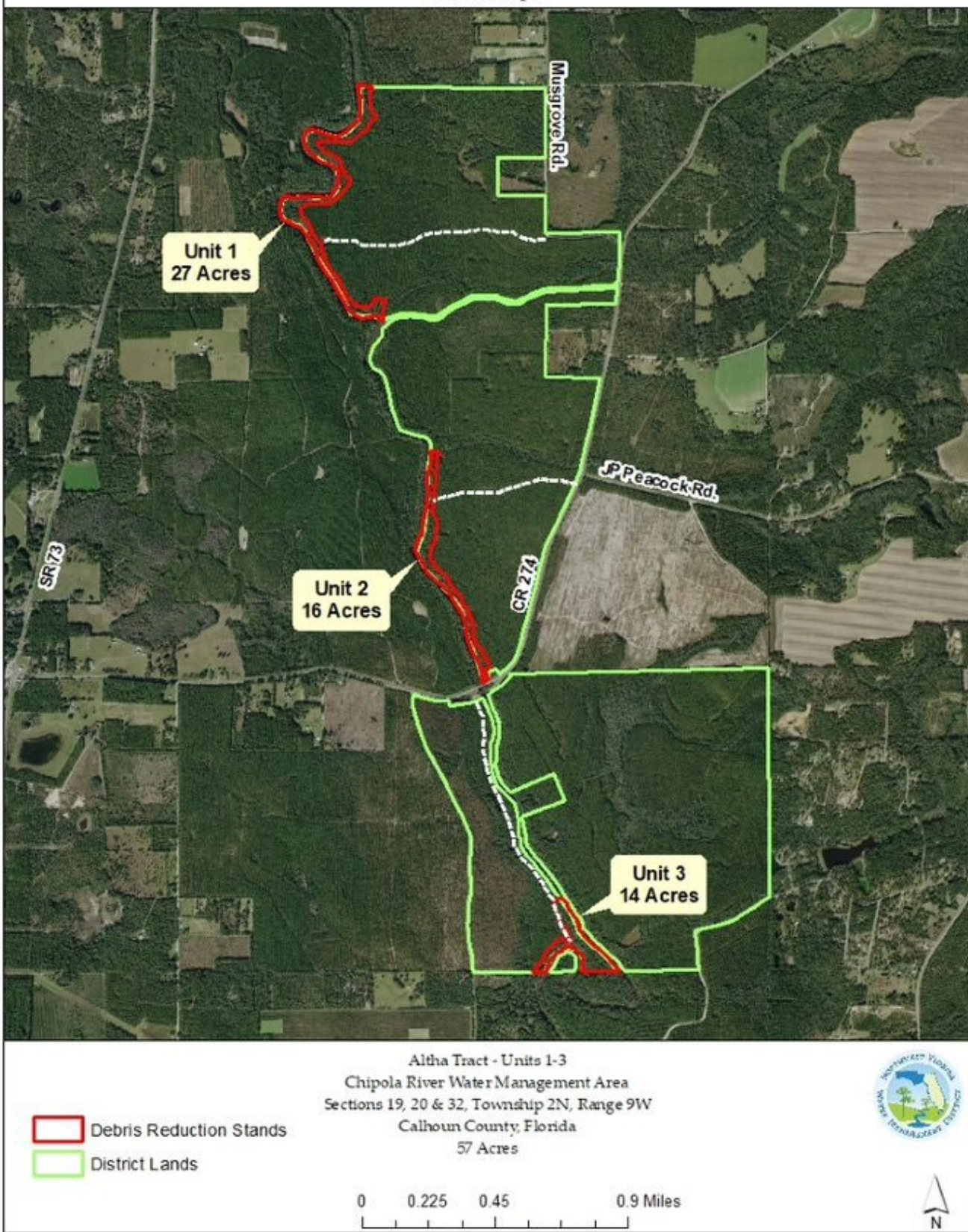


Exhibit Map B

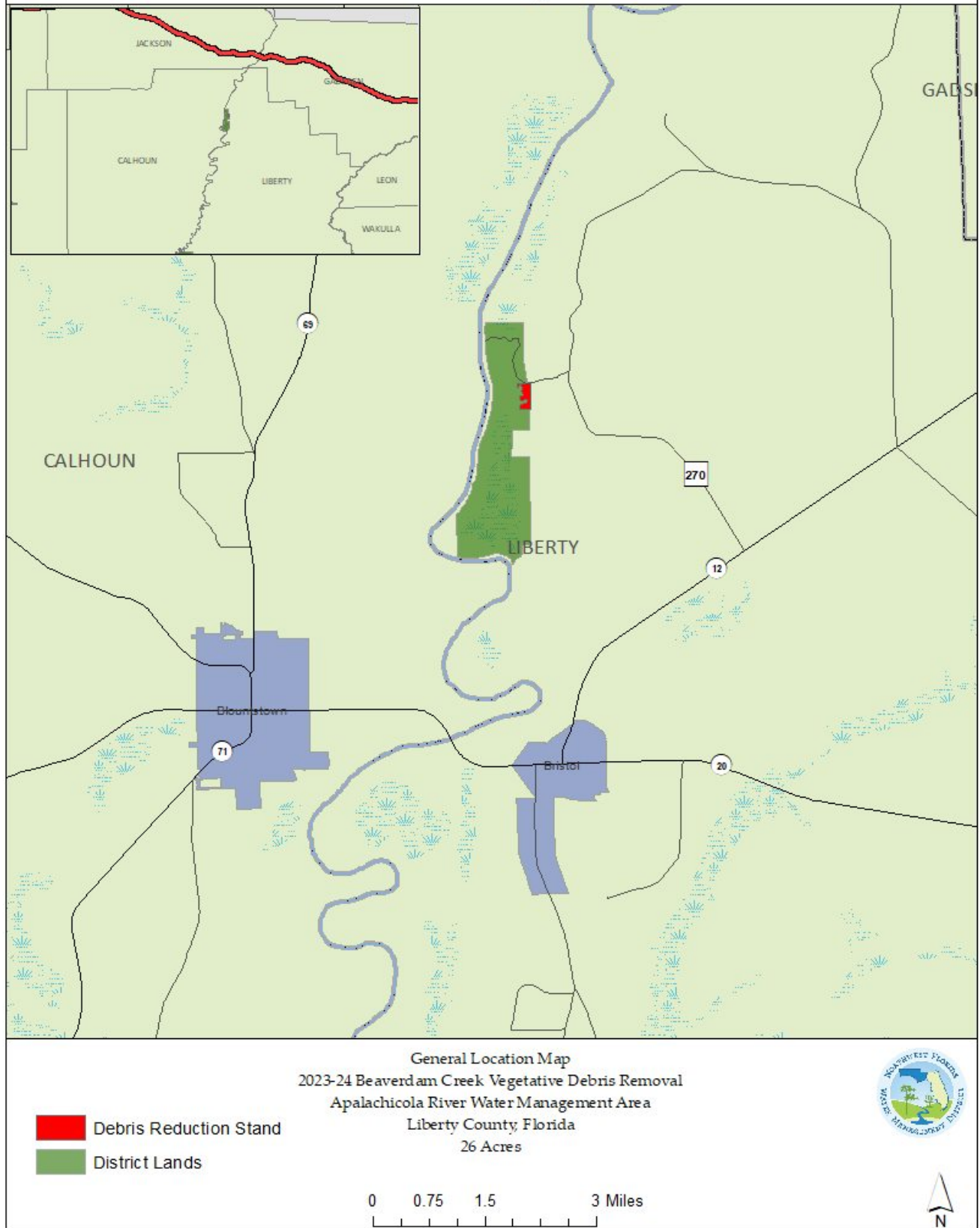




Exhibit Map C

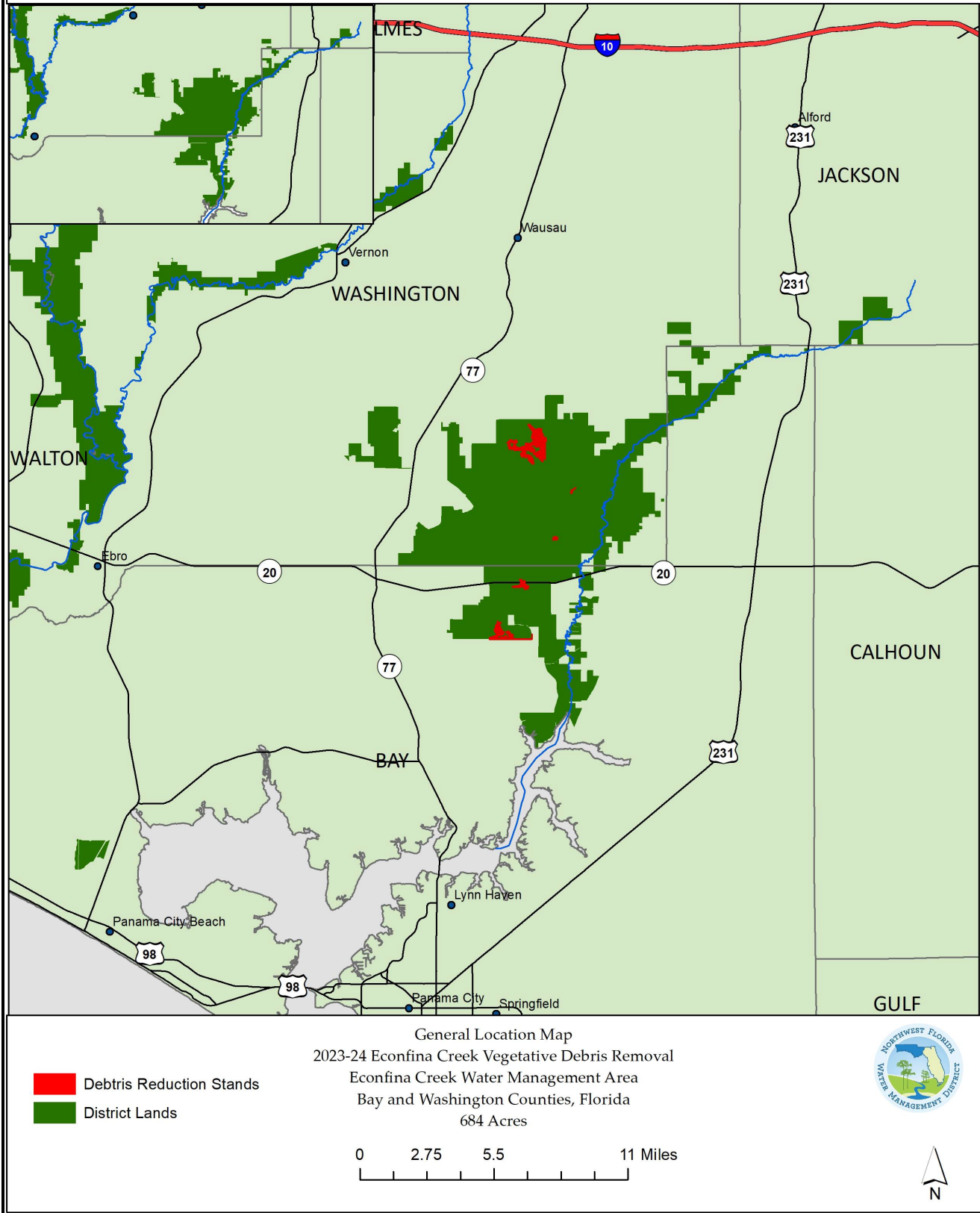
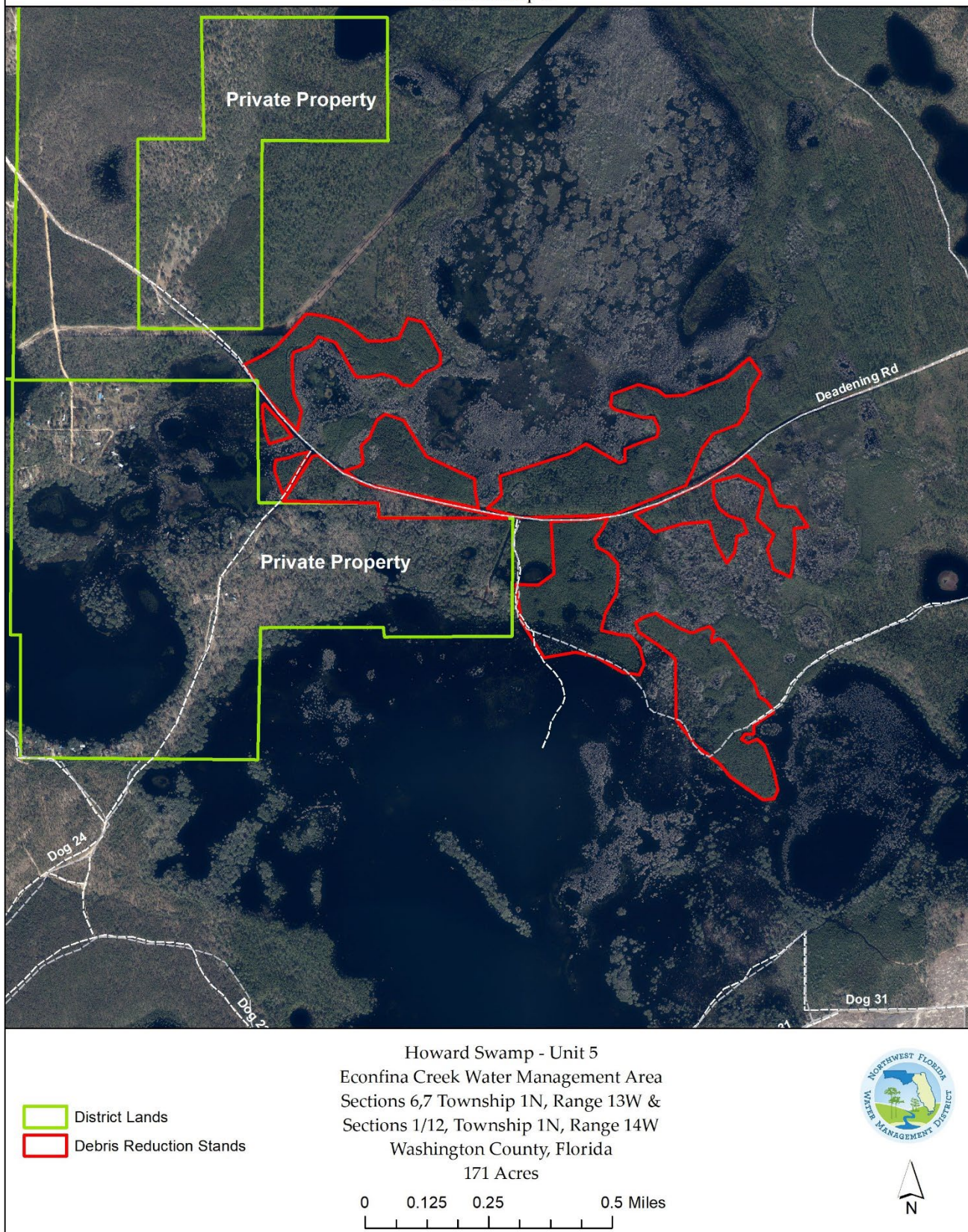


Exhibit Map 3



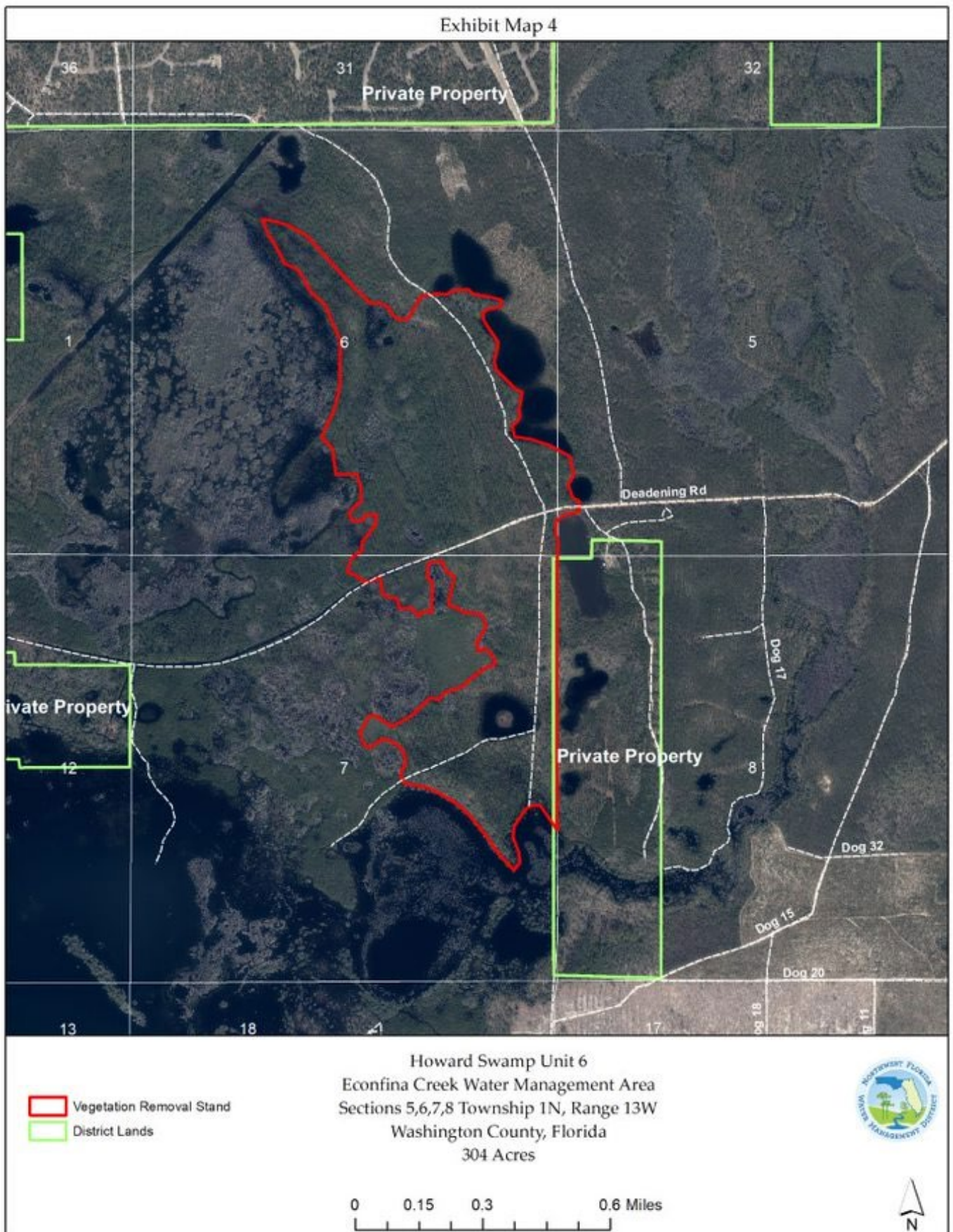

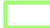


Exhibit Map 5



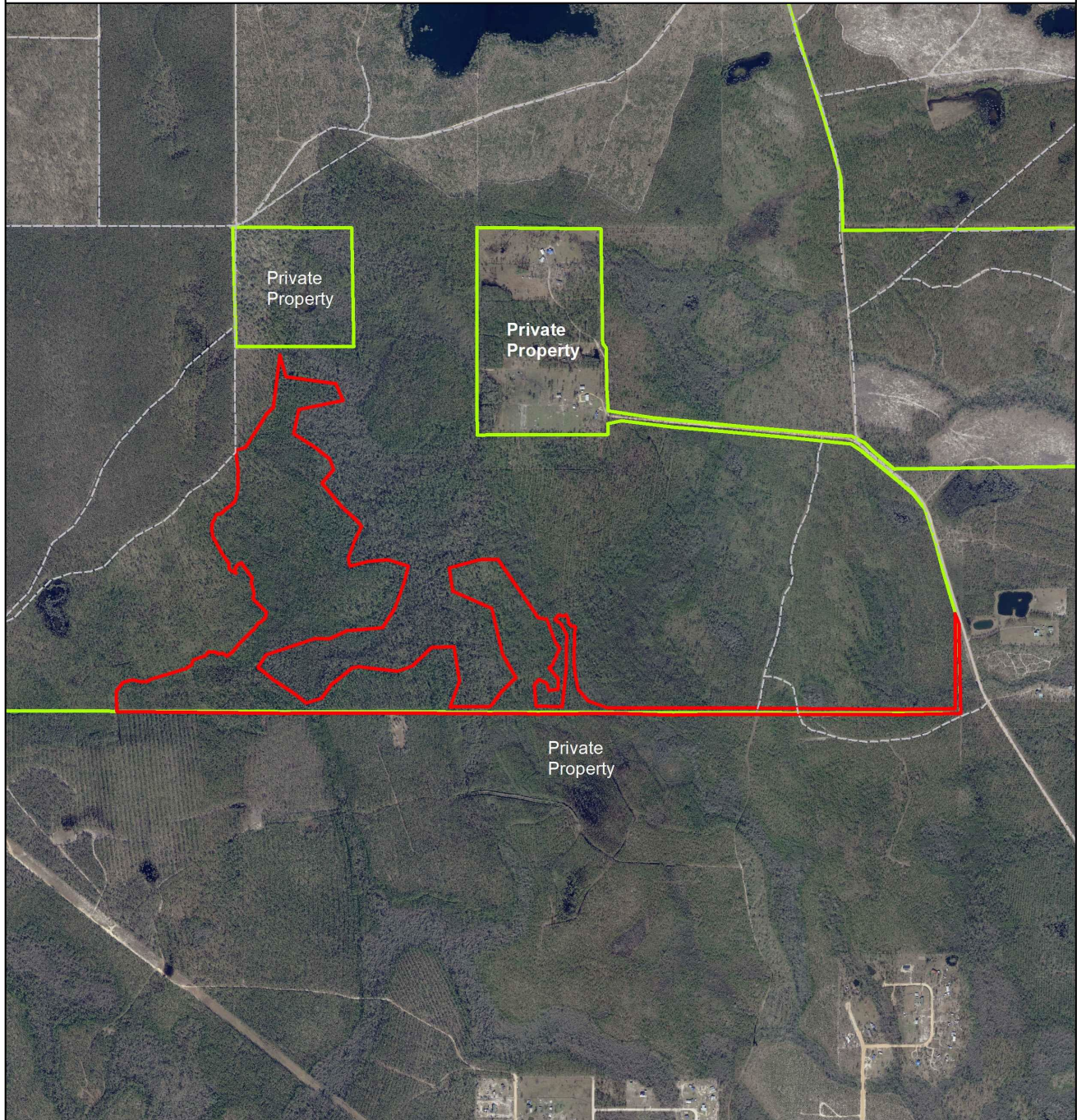
-  Debris Reduction Stands
-  District Lands



Bay Gall - Unit 7
Econfina Creek Water Management Area
Section 6, Township 1S, Range 13W &
Section 1, Township 1S, Range 14W
47 Acres

0 0.075 0.15 0.3 Miles



Exhibit Map 6



-  Debris Reduction Stand
-  District Lands



Kennedy Bay - Unit 8
Econfina Creek Water Management Area
Sections 13 & 14, Township 15, Range 14W &
Section 18, Township 15, Range 13W
Bay County, Florida
149 Acres

0 0.15 0.3 0.6 Miles



Exhibit Map 7



-  Debris Reduction Stand
-  District Lands

Rattlesnake Lake South - Unit 9
Econfina CreekWaytere Management Area
Section 29, Township 1 North, Range 13 West
Washington, County, Florida
10 Acres

0 0.075 0.15 0.3 Miles



Exhibit Map 8

