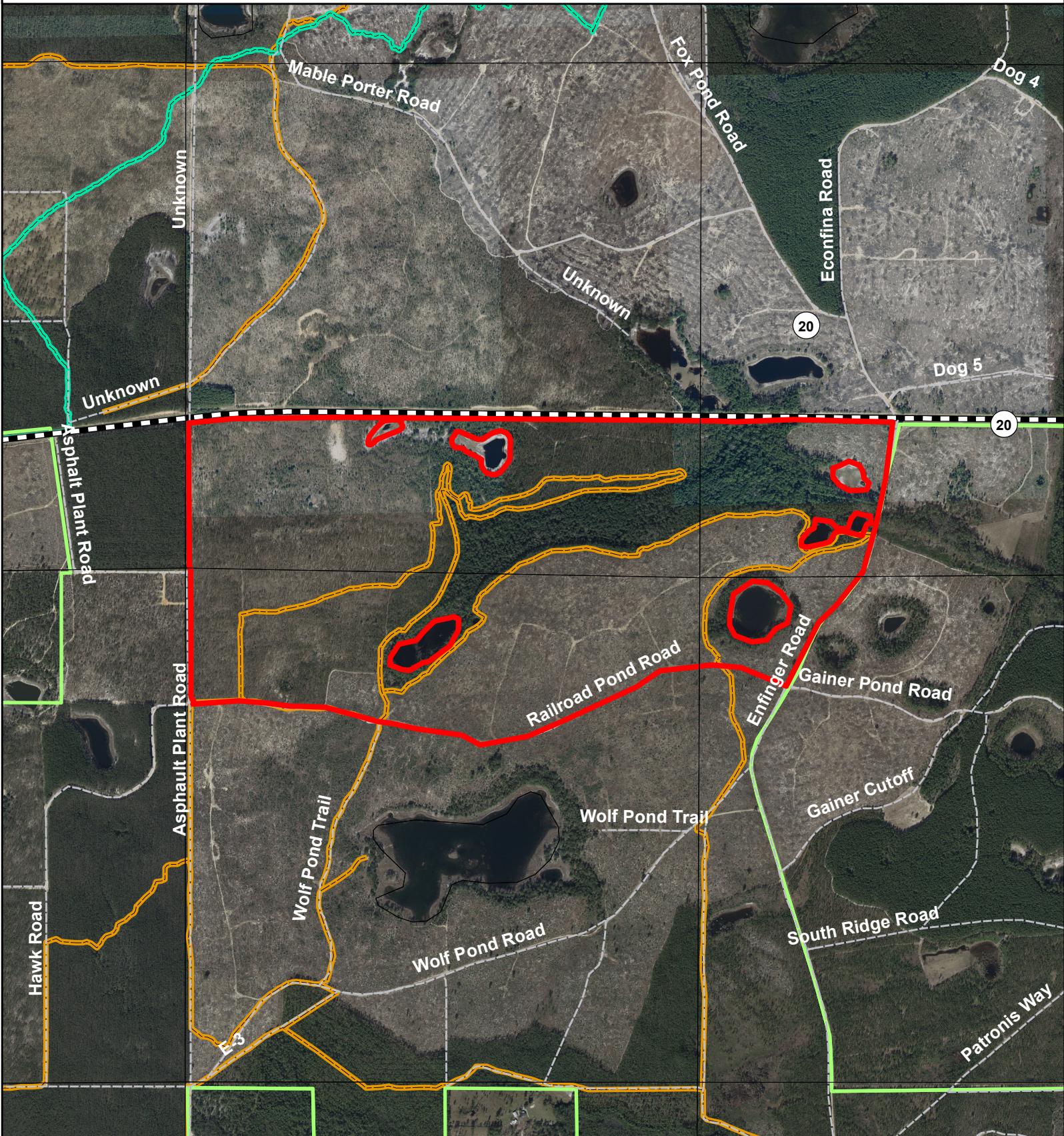
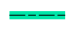


Exhibit Map 21



2024 Prescribed Burn Project - Hwy 20 South Unit 21
Econfina Creek Water Management Area
Sections 1/12, Township 1S, Range 14W &
Sections 6/7, Township 1S, Range 13W
Bay County, Florida
210 Acres

-  Burn Area
-  District Lands
-  Florida National Scenic Trail
-  Equestrian Trails

0 0.125 0.25 0.5 Miles

