

2023 Critical Wetlands Evaluation

The District performed a GIS-based screening analysis of wetlands in its 16-county area utilizing metrics representative of each of the four statutory criteria. Following this analysis, the top-ranked 105 wetland parcels were reviewed relative to land acquisition and management considerations, resulting in a preliminary set of 34 candidate parcels. Consistent with statutory requirements, letters were sent to the 34 property owners providing an opportunity to remove their property from the preliminary list. Six property owners requested to opt out, resulting in a revised set of 28 candidate wetlands.

The 28 sites were reviewed with local governments and input was sought regarding the District’s review and prioritization process. District staff subsequently performed roadside surveys of sites accessible via public roads to assess whether any appeared unsuitable due to poor habitat conditions or recent land use changes. Of the accessible sites, one was removed due to management constraints imposed by adjacent land use. The final list of 27 critical wetlands is provided in Table 1. Sites range in size from 10 to 658 acres and comprise of mix of wetland types, including hydric pine flatwoods, mixed forested wetlands, saltwater marshes, and wet prairies. Sites are distributed across four counties: Escambia, Santa Rosa, Okaloosa, and Jackson, and are generally located near developed areas due to the susceptibility to development as an evaluation criterion. These 27 parcels will be further reviewed for potential acquisition should funding become available from the Land Acquisition Trust Fund.

Table 1. Summary of 2023 Critical Wetlands

<i>Wetland Parcel</i>	<i>County</i>	<i>Size (acres)</i>	<i>Section</i>	<i>Township</i>	<i>Range</i>	<i>Wetland Type(s)</i>
1	Escambia	25.05	36	1N	32	Hydric pine flatwoods
2	Escambia	47.22	36	2S	31	Hydric pine flatwoods, mixed scrub-shrub wetlands
3	Jackson	89.85	16	05N	10W	Intermittent pond, mixed wetland hardwoods, stream and lake swamps
4	Okaloosa	17.63	1	02N	24W	Wetland hardwood forests, wetlands forested mixed
5	Okaloosa	24.94	1	02N	24W	Wetland hardwood forests
6	Okaloosa	15.94	3	03N	24W	Stream and lake swamps, wetlands forested mixed
7	Okaloosa	109.18	4	02N	24W	Freshwater marsh, hydric pine flatwoods, wetlands forested mixed
8	Okaloosa	95.18	8	02N	24W	Hydric pine flatwoods, wetlands forested mixed, titi swamps, wet prairies
9	Okaloosa	102.74	8	02N	24W	Hydric pine flatwoods, mixed scrub-shrub wetlands, wetlands forested mixed
10	Okaloosa	658.21	9	02N	24W	Hydric pine flatwoods, gum swamps, mixed scrub-shrub wetlands, wetlands forested mixed, stream and lake swamps, wetland hardwood forests

Wetland Parcel	County	Size (acres)	Section	Township	Range	Wetland Type(s)
11	Okaloosa	234.84	23	03N	24W	Cypress, hydric pine flatwoods, stream and lake swamps, wetlands forested mixed, wet prairies
12	Okaloosa	11.45	27	03N	24W	Stream and lake swamps
13	Okaloosa	66.41	27	03N	24W	Hydric pine flatwoods, wetlands forested mixed
14	Okaloosa	29.96	33	03N	24W	Wetlands forested mixed
15	Okaloosa	10.39	34	03N	24W	Hydric pine flatwoods, wetlands forested mixed, mixed wetland hardwoods
16	Santa Rosa	52.30	1	01N	30W	Hydric pine flatwoods, stream and lake swamps
17	Santa Rosa	13.01	2	01N	28W	Cypress, mixed wetland hardwoods, titi swamps
18	Santa Rosa	143.49	9	02N	30W	Cypress, hydric pine flatwoods, mixed scrub-shrub wetlands, wetlands forested mixed, wetland hardwood forests
19	Santa Rosa	68.74	9	02N	30W	Cypress, hydric pine flatwoods, mixed wetland hardwoods, wetland forested mixed
20	Santa Rosa	21.95	16	02N	30W	Cypress, wetlands forested mixed
21	Santa Rosa	45.65	16	02N	30W	Stream and lake swamps, wetland forested mixed
22	Santa Rosa	60.07	22	02N	30W	Wetland forested mixed
23	Santa Rosa	61.92	23	01N	29W	Emergent aquatic vegetation, mixed scrub-shrub wetlands, saltwater marsh, wetland forested mixed
24	Santa Rosa	137.17	29	01N	27W	Mixed scrub-shrub wetlands, wetlands forested mixed
25	Santa Rosa	16.36	25	02N	28W	Cypress, stream and lake swamps
26	Santa Rosa	58.27	10	01N	28W	Mixed wetland hardwoods, saltwater marshes
27	Santa Rosa	14.63	36	02N	28W	Stream and lake swamps

Figure 1. Critical Wetlands in Escambia County

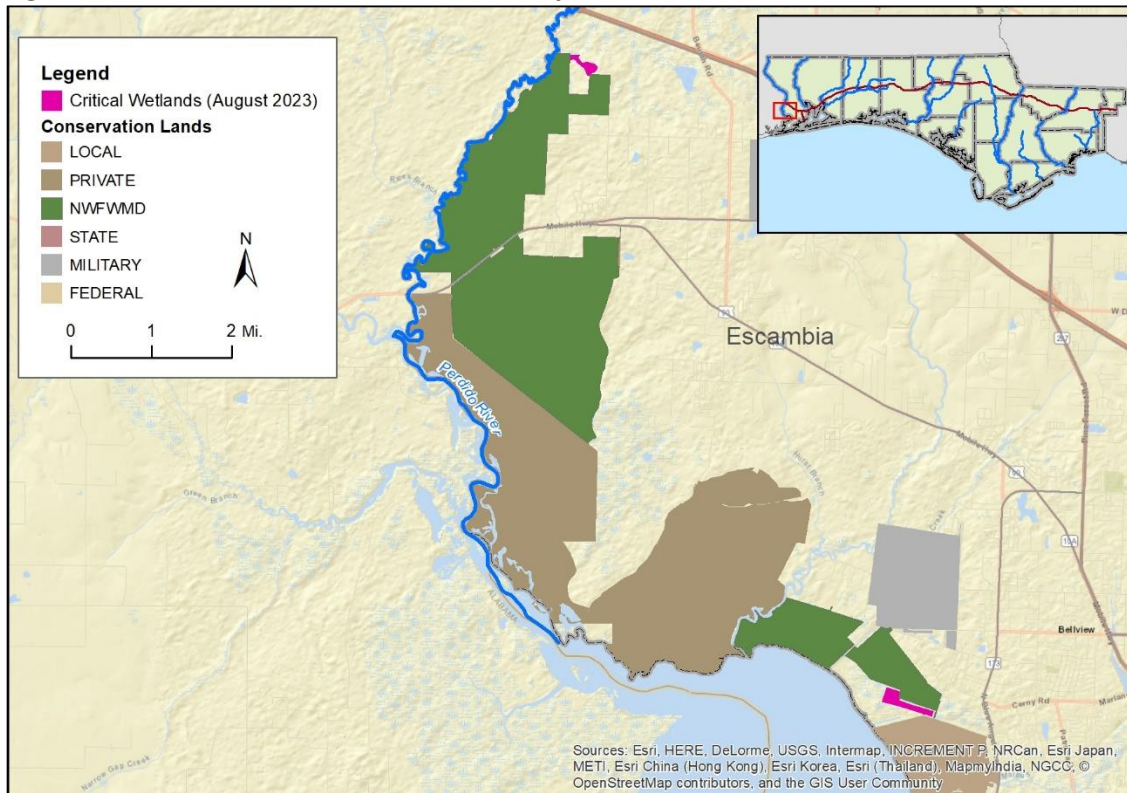


Figure 2. Critical Wetlands in Santa Rosa County

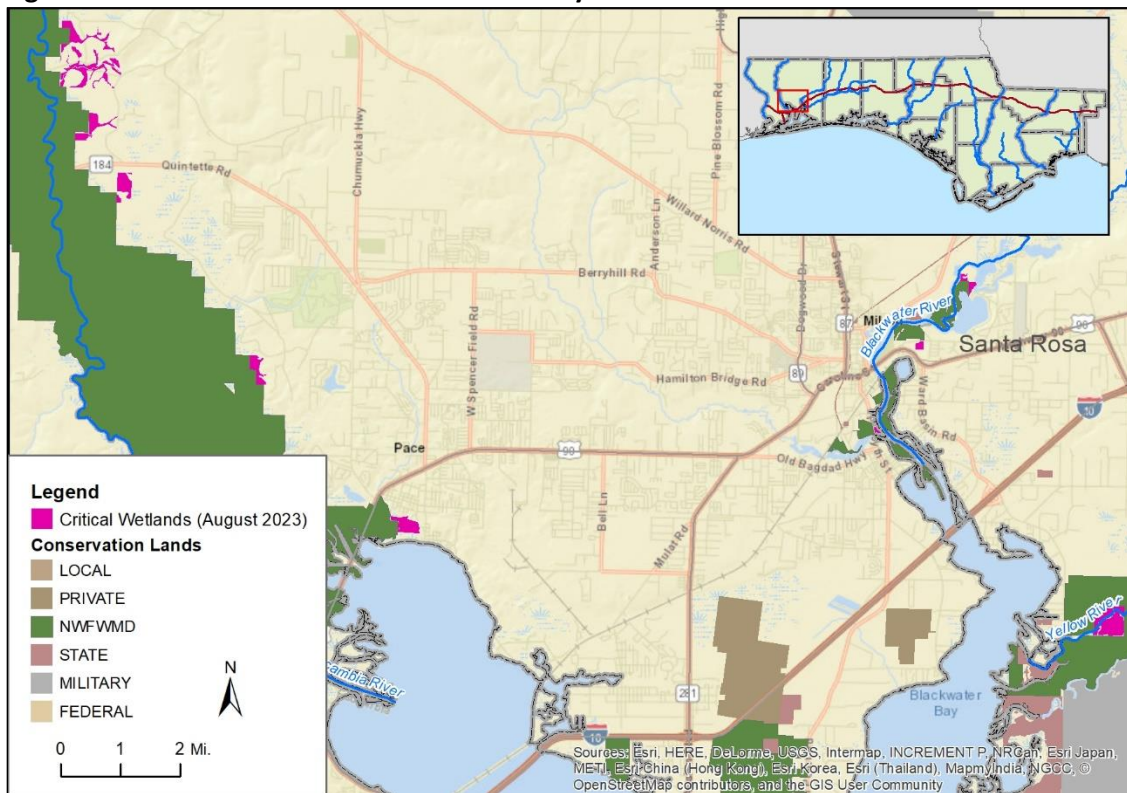


Figure 3. Critical Wetlands in Okaloosa County

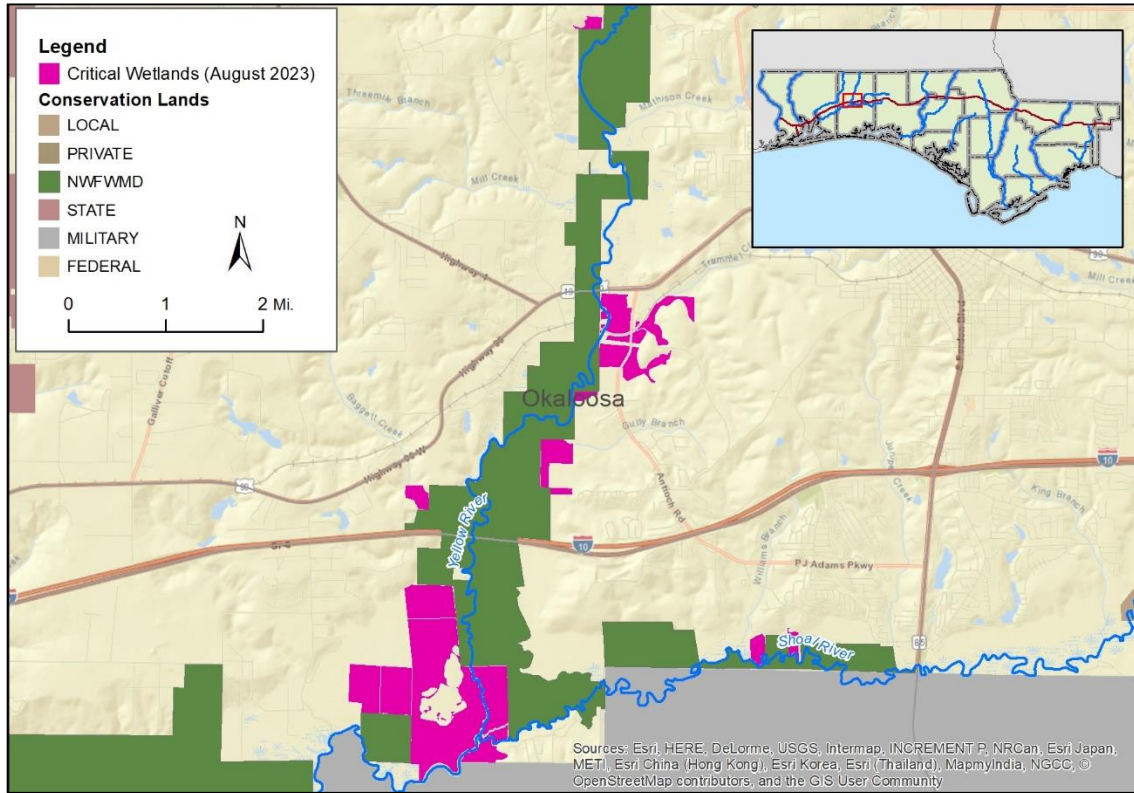


Figure 4. Critical Wetlands in Jackson County

