

2021 Estimated Water Use

in the

Northwest Florida Water Management District

SUMMARY REPORT



December 2022

TRS-23-1

Background and Methods

Pursuant to Florida Statutes,¹ quantifying existing legal uses of water or estimating water use is foundational data for Northwest Florida Water Management District (NFWFMD or District) water supply assessments, regional water supply plans, groundwater models and MFL technical assessments, and consumptive use permitting. Existing water use is the baseline data to develop water demand projections and future reasonable-beneficial water use needs.

As noted in Rule 62-40.540(6), F.A.C., *“The Districts shall implement a strategy for measuring, estimating, and reporting withdrawal and use of water by permitted and exempted users. ... The Districts are encouraged to summarize and analyze water use in the District at least annually.”* Also by rule (62-40.531, F.A.C.), water use estimates and projections are to be provided for the following use classes:

1. Public Supply,
2. Domestic Self-Supply (DSS),
3. Agricultural,
4. Recreational Irrigation (golf course, landscape),
5. Industrial-Commercial-Institutional (ICI), and
6. Thermoelectric (Power Generation).

Estimates are based on best available data and primarily rely on audited reports from permittees with Individual Water Use Permits (IWUPs) that have an average daily rate equal to or greater than 0.1 million gallons per day (mgd) of water use or permitted allocation or that have permit conditions requiring annual water use reporting, for example, due to being within a Water Resource Caution Area or Area of Resource Concern. Given numerous small communities and rural areas within the NFWFMD, about 30 percent of IWUPs are less than 0.1 mgd in an average year. Estimates include water withdrawals from groundwater aquifer systems and from surface water sources.

¹ Sections 373.036 and 373.709, Florida Statutes (F.S.).

² Additional water use estimates include IWUPs and other small-scale recreational wells with General Water Use Permits (GWUPs) with no reporting requirements.

Public supply data include estimates of water withdrawals, transfers, and demand; estimates of populations served and per capita water use rates. Domestic self-supply is estimated based on population and per capita rate. Agricultural water use is reported, but the total estimate is based on the Florida Department of Agriculture and Consumer Services (FDACS) Florida Statewide Agricultural Irrigation Demand (FSAID) estimates. Recreational irrigation estimates are a combination of reported pumpage and additional estimated use.² Industrial-commercial-institutional (ICI) and power generation water uses are estimated from reported pumpage and adjusted for water returns. Water that is withdrawn for cooling purposes and returned to the source is not considered consumptive use.

Public supply reported pumpage and other supporting data include, by default, seasonal water use. Seasonal residents, which include migrant workers, are estimated to affect public supply and DSS water use in all sixteen counties. Therefore, population estimates for public supply, DSS, and by county include seasonal resident adjustments.

This report summarizes the District’s reported and estimated water use in calendar year 2021. An overview of District land use and water supply planning regions is illustrated in Figure 1, below.

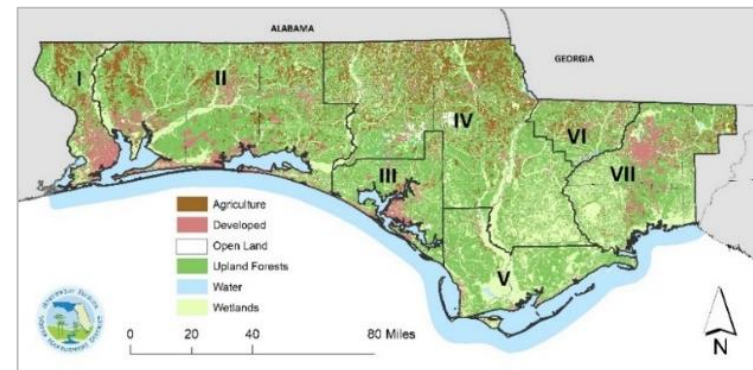


Figure 1. NFWFMD Land Use and Planning Regions

2021 Water Use Summary

As illustrated in Figure 1, the District’s sixteen counties are organized into seven water supply planning regions:

- I. Escambia County
- II. Okaloosa, Santa Rosa, and Walton counties
- III. Bay County
- IV. Calhoun, Holmes, Jackson, Liberty, and Washington counties
- V. Franklin and Gulf counties
- VI. Gadsden County
- VII. Leon, Wakulla, and (NWF portion of) Jefferson counties

District water use in 2021 totaled more than 329 mgd and is summarized by region and water use category in Table 1 and Figure 2.

Escambia County (Region I) accounted for 24 percent of all District estimated water use in 2021, more than 80 mgd. Region II was the second largest user with 75 mgd or 23 percent. Bay County was the third largest in water use, followed by regions IV and VII.

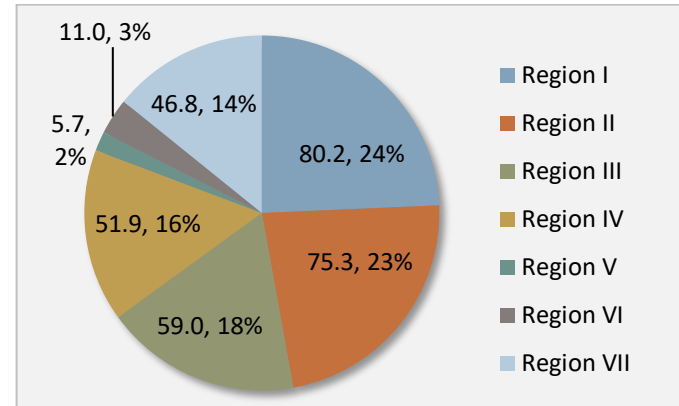


Figure 2. Estimated Water Use by Planning Region (mgd)

In 2021, public supply accounted for more than half of all Districtwide water use (167 mgd), followed by ICI at 65 mgd, and then agriculture (49 mgd). Recreation, DSS, and power generation range from two to six percent of total water use (Table 1 and Figure 4).

Public supply has consistently been the largest water use category Districtwide since 1995 (see Appendix, page A.20). Public supply water use is concentrated in urbanized portions of regions I, II, III, and VII (Table 1 and Figure 2). Region IV, predominately rural and agricultural, had 36 percent of all DSS and 73 percent of all agricultural water use.

Region II had 55 percent of all recreational water use. Region I had 51 percent of all industrial-commercial-institutional (ICI) self-supplied water use while regions III and VII had 37 percent and 33 percent, respectively, of power generation water use.

Table 1. Estimated Water Use by Category and by Region (mgd)

Planning Region	Public Supply	Domestic Self-Supply	Agriculture	Recreation	ICI	Power Generation	TOTAL WATER USE (mgd)
Region I	38.55	1.64	3.00	2.18	33.50	1.30	80.16
Region II	53.69	2.17	2.92	11.44	5.08	-	75.30
Region III	27.73	1.99	0.88	2.09	23.31	3.02	59.02
Region IV	5.46	6.57	36.12	0.92	1.64	1.20	51.91
Region V	4.62	0.34	0.30	0.27	0.18	-	5.71
Region VI	4.27	1.19	4.91	0.15	0.43	-	10.95
Region VII	33.04	4.39	1.62	3.81	1.20	2.71	46.79
TOTALS	167.36	18.29	49.76	20.86	65.35	8.22	329.83

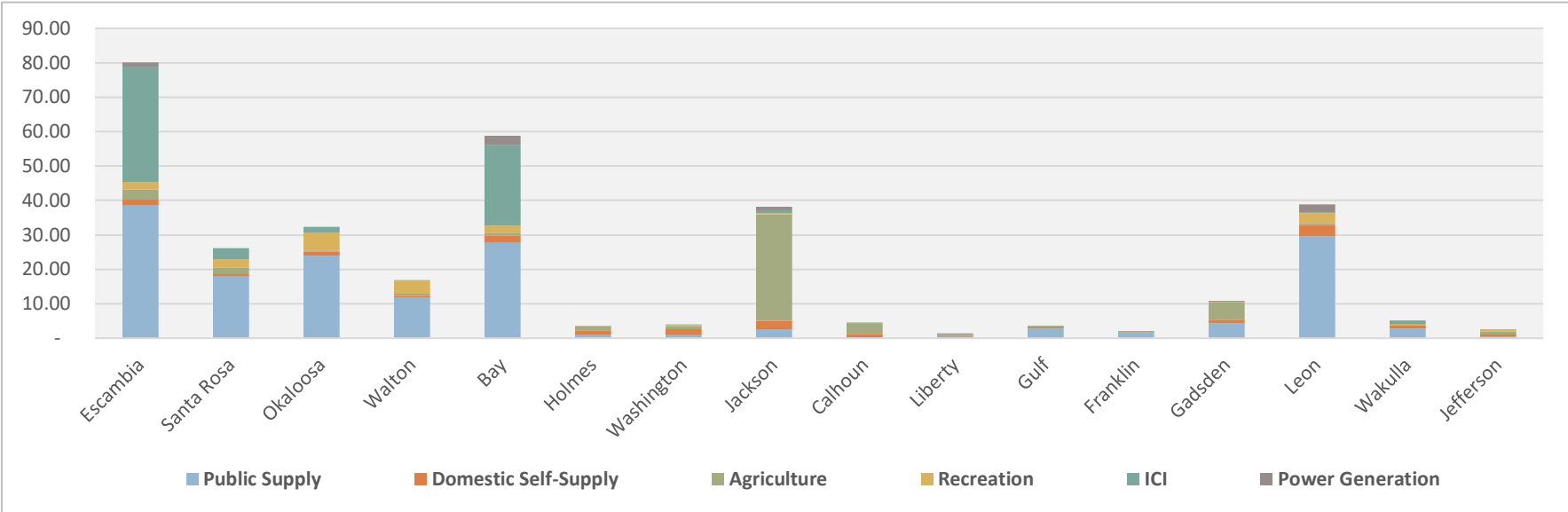


Figure 3. Total Water Use by County and Water Use Category (mgd)

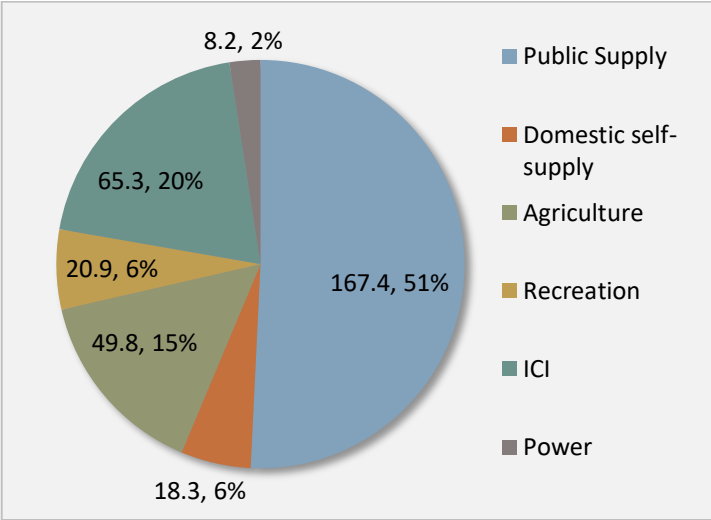


Figure 4. Total Water Use by Category (mgd)

Population Estimates

The University of Florida, Bureau of Business and Economic Research (BEBR), estimated 2021 District population to be 1,510,330 (Table 2).

Table 2. Population Estimates

REGION	BEBR Permanent Populations	Seasonal Adjustments	TOTAL ² Population Estimates
Region I	324,458	10,383	334,841
Region II	483,056	61,218	544,274
Region III	178,282	21,394	199,676
Region IV	113,005	3,445	116,450
Region V	27,188	8,083	35,271
Region VI	43,813	1,052	44,865
Region VII ¹	340,528	3,556	344,084
TOTALS	1,510,330	109,129	1,619,459

¹ Estimated NFWFMD share of Jefferson County only.

² Total population estimates, including seasonal adjustments.

The effects of seasonality were estimated to add an equivalent of 109,129 residents for a total adjusted population estimate of 1,619,459. Approximately 86 percent of District residents are estimated to be served by public supply utilities.

The 2021 BEBR Districtwide population estimate is 17,455 more than 2020, following trends seen before the slight decrease in the 2019 estimate likely due to continued recovery from Hurricane Michael.

Table 3. BEBR Population Estimates 2020-2021

	BEBR Population Estimates		2020-2021 Change	
	2021	2020	Population	Percent
Escambia	324,458	323,714	744	0.2%
Okaloosa	213,204	203,951	9,253	4.5%
Santa Rosa	191,911	184,653	7,258	3.9%
Walton	77,941	74,724	3,217	4.3%
Bay	178,282	174,410	3,872	2.2%
Calhoun	13,683	14,489	(806)	-5.6%
Holmes	19,665	20,001	(336)	-1.7%
Jackson	47,198	46,587	611	1.3%
Liberty	7,464	8,575	(1,111)	-13.0%
Washington	24,995	25,334	(339)	-1.3%
Franklin	12,364	11,864	500	4.2%
Gulf	14,824	14,724	100	0.7%
Gadsden	43,813	46,226	(2,413)	-5.2%
Jefferson ^(NWF Only)	10,296	10,158	138	1.4%
Leon	295,921	299,484	(3,563)	-1.2%
Wakulla	34,311	33,981	330	1.0%
TOTALS	1,510,330	1,492,875	17,455	1.2%

Rainfall and Drought

Precipitation varies regionally with more rain naturally occurring in the western panhandle and lower rainfall levels typical in northeastern parts of the District (Figure 5). The 2021 annual average rainfall Districtwide of nearly 71.7 inches was above the normal annual average of 60.7 inches (Figure 85).

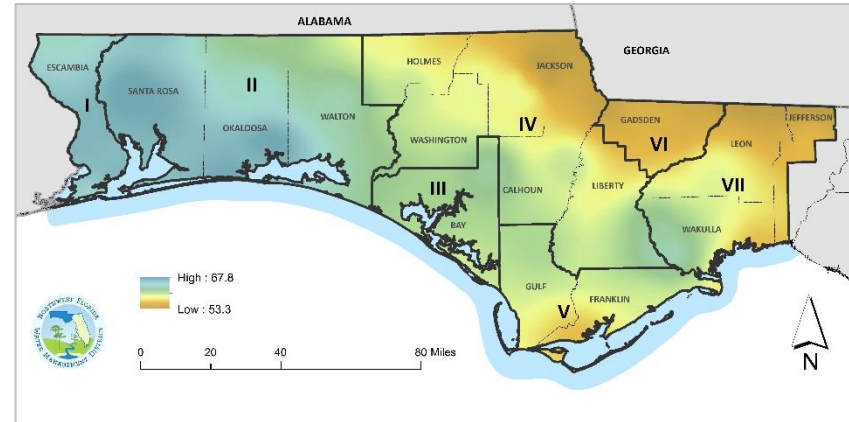


Figure 5. Normal Average Annual Precipitation (1981-2010) In/Yr³

Agriculture and recreation are the two water use categories most affected by rainfall and drought. More precipitation information is in the Agricultural and Recreational Irrigation section.

Water use in Public Supply and Domestic Self-Supply typically increases by an estimated seven percent in dry years. Power Generation and ICI drought year demands are not anticipated to differ from water demands during an average rainfall year.

³ Source: PRISM Climate Group, Oregon State University, <http://prism.oregonstate.edu>. Data created July 10, 2012.

Public Supply and Domestic Self-Supply

Public supply water use in 2021 was estimated to be 167.36 mgd, more than half of all water use Districtwide. With seasonal adjustments, estimated public supply populations served totaled 1.39 million. Approximately 57 percent of all public supply water use was in the District’s three most urbanized counties: Escambia, Bay, and Leon; and nearly 92 percent was in regions I, II, III and VII.

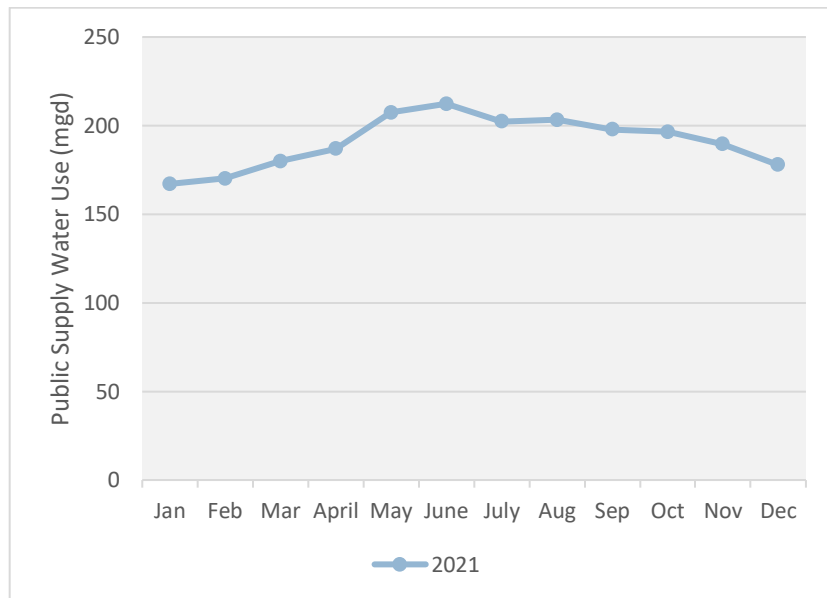


Figure 6. Monthly Average Public Supply Water Use (mgd)

Districtwide monthly average public supply water use during 2021 is illustrated in Figure 6. Lowest water use generally occurs during winter months. Higher water consumption from May through October is likely due to landscape irrigation needs or the impacts from seasonal residents in some communities, or both.

⁴ Gallons per capita per day (gpcd).

The estimated 2021 DSS population was 206,237. With a domestic per capita water use rate of 88.67 gpcd⁴ (USGS, 2014), the estimated domestic self-supply (DSS) water use was approximately 18.3 mgd.

Together, public supply and DSS comprised 56 percent of all water use Districtwide in 2021.

Per Capita Water Use Rates

The 2021 Districtwide public supply per capita water use rates were 119.1 gpcd gross and 73.0 gpcd residential. Gross per capita rates have been in a general downward trend and residential rates relatively constant (Figure 7). See Appendix, page A.19, for more information.

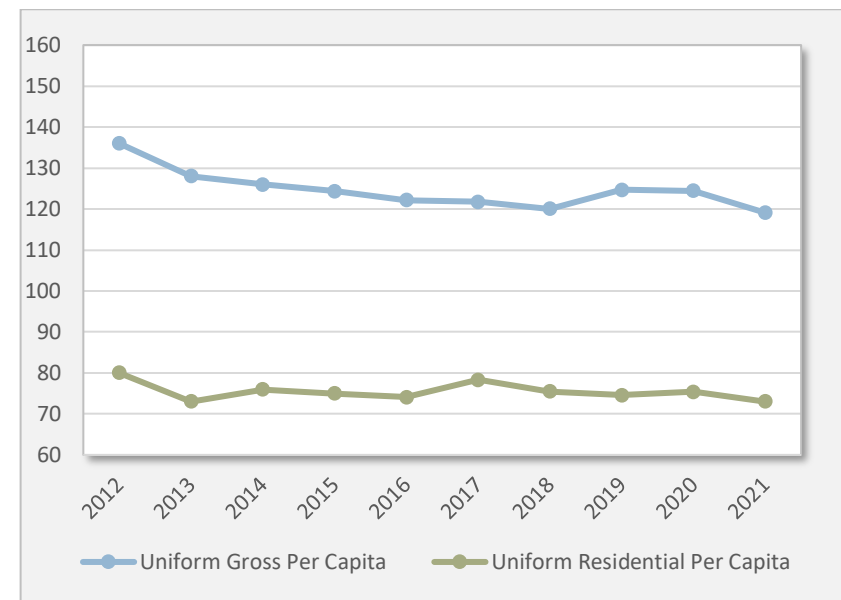


Figure 7. Trends in Per Capita Water Use Rates 2012-2021 (gpcd)

Five-year average per capita rates over the period 2017-2021 are:

- Average Uniform Gross Per Capita: 122.0 gpcd
- Average Uniform Residential Per Capita: 75.4 gpcd

Agricultural and Recreational Irrigation

The Districtwide annual average rainfall in 2021 was above average (Figure 8). From 2011 to 2021, data appears to indicate an inverse relationship between reported agricultural water use and annual average precipitation though this is dependent on the time of year that precipitation occurs.

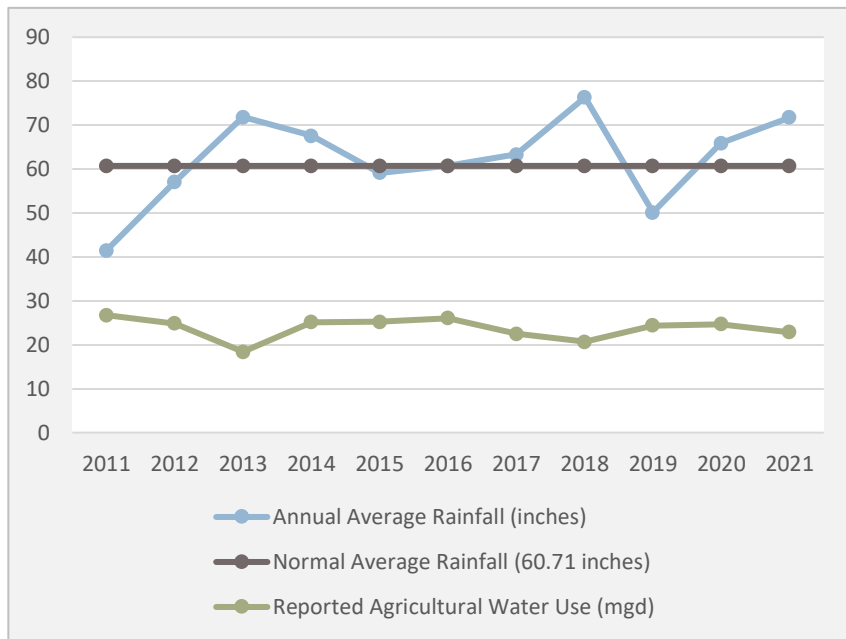


Figure 8. Rainfall and Agricultural Reported Water Use 2011-2021

The reported agricultural water use in 2021 was 22.9 mgd, approximately 46 percent of the most recent FSAID total agricultural estimate of 49.8 mgd (2020 data). Ninety-four percent of reported agricultural water withdrawals are from groundwater. Eighty-eight percent of the reported surface water withdrawals were in Gadsden County.

Monthly average reported agricultural water use during calendar years 2019, 2020, and 2021 is illustrated in Figure 9.

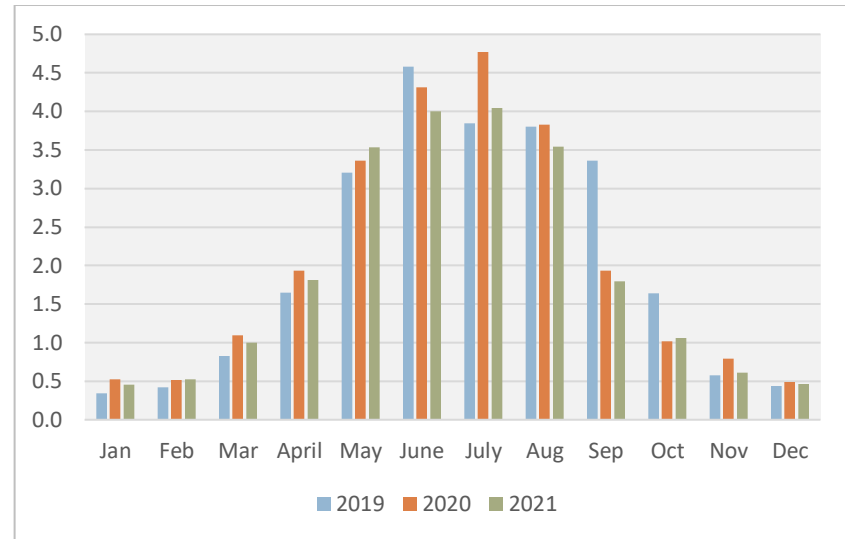


Figure 9. Reported Agricultural Water Use by Month (mgd)

Recreational water uses include golf course and landscape irrigation, and water-based recreation. About 70 percent of small-scale irrigation GWUP wells in NFWMD are estimated to be in Region II. Also, Region II had 56 percent of the reported and 55 percent of the total estimated recreational water use Districtwide.

The total estimated recreational water use in 2021 was 20.9 mgd. Reported recreational water use was 12.2 mgd or 58 percent of the total. The sources of reported recreational water use are approximately 55-45 ground to surface water. Other sources of water may include reuse of reclaimed water or co-mingling of surface, ground, and reuse waters, which were not analyzed at the time of this report.

Collectively, agricultural and recreational irrigation were estimated to comprise 21 percent of all water use Districtwide in 2021.

Power Generation and ICI

Thermoelectric power generation and ICI self-supplied water use estimates in 2021, adjusted for recirculation, were approximately 8.2 mgd and 65.3 mgd respectively. Power generation and ICI together were 22 percent of all 2021 water use Districtwide.

Eighty-seven percent of ICI self-supply water use was in Escambia and Bay counties, eight percent in Region II, and five percent in the remaining District counties. Additional ICI water users are served by public supply utilities. Of the total ICI self-supplied water use, 64 percent was groundwater and 36 percent surface waters.

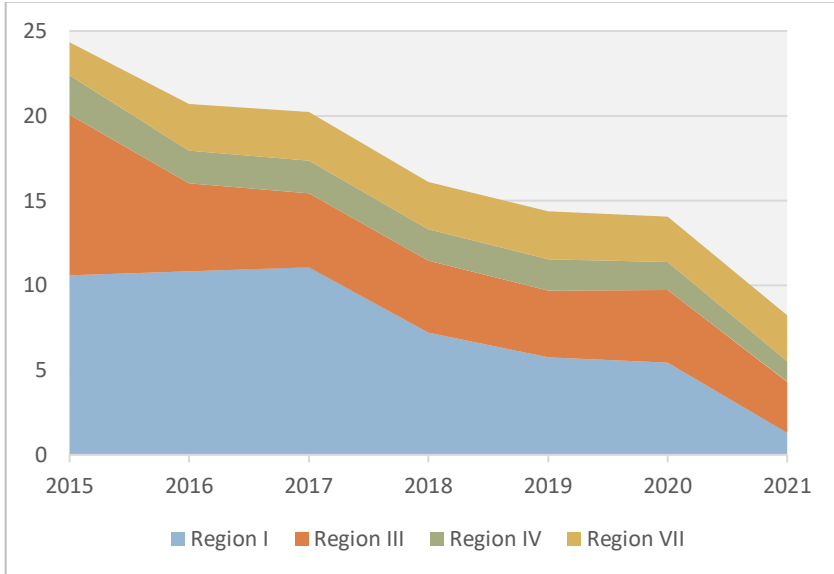


Figure 10. Trends in Power Water Use 2015-2021 (mgd)

Figure 10 illustrates total power water use from 2015 to 2021 in regions that have thermoelectric power generation facilities. Factors contributing to declining water use trends may include conservation, system efficiencies, and fuel conversions.

Water Withdrawals by Water Source

Primary groundwater resources are the Floridan aquifer across much of northwest Florida and the sand-and-gravel aquifer in western parts of the District. A major surface water resource is Deer Point Lake Reservoir in Bay County.

Approximately 65 percent of water withdrawals in 2021 were from groundwater, 19 percent from surface waters, and 16 percent “Other Water” – which are unknown or uncertain sources of water attributed to DSS and to additional agricultural and recreational water use estimates (Figure 11). Withdrawals from the Floridan aquifer accounted for an estimated 35 percent of all water use and over half of all groundwater withdrawals. Approximately 45 percent of groundwater withdrawals were from the sand-and-gravel aquifer. Less than one percent of groundwater pumped was from other aquifers, including the intermediate, Claiborne, and surficial aquifer systems.

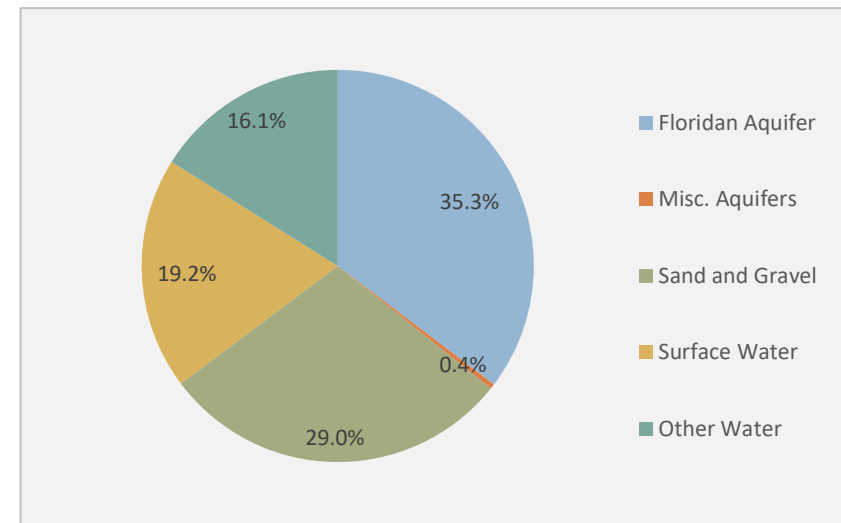


Figure 31. NFWWMD 2021 Water Use by Water Source

Data Quality and Uncertainty Analysis

In 2021, 83 percent (273 mgd) of all estimated water use was from reported and audited compliance data submitted by permittees that have an Individual Water Use Permit (IWUP). Public Supply and ICI estimates are from reported and audited pumping reports. The remaining water use estimates are generated or affected by the following:

- Domestic Self-Supply (DSS) – One hundred percent estimated from population that is not served by public supply and a domestic per capita water use rate provided by USGS.
- Agriculture – Forty-six percent of the total FDACS/FSAID⁵ estimate is NFWFMD reported and audited pumping reports.
- Recreation – Fifty-eight percent of the recreational estimate was from audited pumping reports. The total includes water use estimated from small-scale irrigation wells.
- Power – Some power generating facilities with DEP Site Certifications do not have an IWUP or have limited IWUP compliance reporting conditions. Nearly 2.7 mgd of power estimates reflect this uncertainty.

Also, changes in regulatory criteria, type and frequency of compliance reports submitted by permittees, and changes in the number of permittees with reporting requirements can all affect the availability and quality of water use and population data.

The District continues refining data and methods to enhance population estimates for public supply and DSS, including how to

⁵ The FDACS/FSAID agriculture estimates are typically completed by June following water management district annual estimates, in this case, FSAID IX released in June

account for ICI institutional residents and limited public supply populations in overall population analyses.

Inmate populations are included in BEBR estimates. In 2021, BEBR estimated that NFWFMD had close to seven percent of the total state population and 29 percent of Florida’s inmate population. Share of inmate populations by county are in Table 4.

Correctional facility IWUPs often provide water for multiple use categories (e.g., agriculture, heating and cooling, landscape irrigation) and may still be separately dependent on a public supply utility for potable water supplies.

Table 4. BEBR 2021 Total and Inmate Population Estimates

COUNTY	Total BEBR Estimate	Inmates Estimate	Net Total (less inmates)	Inmates as a % of Total BEBR	Inmates % of Net Total
LIBERTY	7,464	1,144	6,320	15.3%	18.1%
JACKSON	47,198	4,974	42,224	10.5%	11.8%
CALHOUN	13,683	1,422	12,261	10.4%	11.6%
GULF	14,824	1,179	13,645	7.9%	8.6%
WAKULLA	34,311	2,503	31,808	7.3%	7.9%
FRANKLIN	12,364	841	11,523	6.8%	7.3%
WASHINGTON	24,995	1,424	23,571	5.7%	6.0%
GADSDEN	43,813	2,638	41,175	6.0%	6.4%
HOLMES	19,665	1,006	18,659	5.1%	5.4%
SANTA ROSA	191,911	4,390	187,521	2.3%	2.3%
WALTON	77,941	1,264	76,677	1.6%	1.7%
ESCAMBIA	324,458	2,028	322,430	0.6%	0.6%
BAY	178,282	1,120	177,162	0.6%	0.6%
OKALOOSA	213,204	1,243	211,961	0.6%	0.6%
LEON	295,921	1,095	294,826	0.4%	0.4%
JEFFERSON ^(NWF)	10,296	0	10,296	0.0%	0.0%
TOTALS	1,510,330	28,271	1,482,059	1.8%	1.9%

2022 was prepared with 2020 water use data. The water demand estimates are modeled based on average hypothetical rainfall.

Acronyms

BEBR	Bureau of Business and Economic Research
DSS	Domestic Self-Supply
F.A.C.	Florida Administrative Code
FDACS	Florida Department of Agriculture and Consumer Services
F.S.	Florida Statutes
FSAID	Florida Statewide Agricultural Irrigation Demand
gpcd	Gallons per Capita per Day
GWUP	General Water Use Permit
ICI	Industrial-Commercial-Institutional
IWUP	Individual Water Use Permit
mgd	Million Gallons per Day
MFLs	Minimum Flows and Minimum Water Levels
USGS	United States Geological Survey

References and Additional Information

- Bureau of Business and Economic Research (BEBR). 2022. *Florida Estimates of Population 2021*. University of Florida, College of Liberal Arts and Sciences, Population Studies Program. <https://www.bebr.ufl.edu/population>
- Florida Department of Agriculture and Consumer Services (FDACS) and The Balmoral Group (TBG). June 30, 2022. *Florida Statewide Agricultural Irrigation Demand 2020-2045 Agricultural Water Demands* (FSAID IX). <https://www.fdacs.gov/Agriculture-Industry/Water/Agricultural-Water-Supply-Planning>
- Northwest Florida Water Management District (NFWFMD). December 2018. *2018 Water Supply Assessment Update*. WRA 18-01. <https://www.nfwwater.com/Water-Resources/Water-Supply-Planning/Water-Supply-Assessments>.
- U.S. Geological Survey (USGS). 2014. *Water Withdrawals, Use, and Trends in Florida, 2010*. Data supplied by Mr. Rich Marella, USGS Florida Water Science Center, Orlando, Florida.

APPENDIX CONTENTS

Page(s)

Districtwide Water Use and Population Estimates:

Total Estimated Water Use by Category (mgd).....	A.01
Total Estimated Water Withdrawals by Source (mgd).....	A.02
Population Estimates - County, Public Supply Utility, and Domestic Self-Supply.....	A.03

Summary Data Tables by Water Use Category:

1. Public Supply

1.1 Public Supply Water Demand, Populations Served, and Per Capita Water Use.....	A.04
1.2 Public Supply Water Withdrawals by Source (mgd).....	A.05
1.3 Public Supply Water Demand, Populations Served, and Per Capita Water Use - by Utility.....	A.06 – A.10

2. Domestic Self-Supply

2.1 Domestic Self-Supply Population and Water Use Estimates (mgd).....	A.11
2.2 Domestic Self-Supply Population Estimates Over Time.....	A.12

3. Agriculture

3.1 Agricultural Water Use - Reported and Total Estimates (mgd).....	A.13
3.2 Agricultural Reported Water Use by Source (mgd).....	A.14

4. Recreational Irrigation

4.1 Recreational Irrigation Water Use - Reported and Total Estimates (mgd).....	A.15
4.2 Recreational Irrigation Reported Water Use by Source (mgd).....	A.16

5. Industrial-Commercial-Institutional

5.1 Industrial-Commercial-Institutional Reported Water Use by Source (mgd).....	A.17
---	------

6. Thermoelectric Power Generation

6.1 Thermoelectric Power Generation Reported Water Use by Source (mgd).....	A.18
---	------

Water Use Trends:

Public Supply Per Capita Water Use Over Time (gpcd).....	A.19
Trends in Share of and Total Water Use Estimates by Water Use Category (mgd).....	A.20

Total Estimated Water Use by Category (mgd)

Planning Region	County / Region	Public Supply	Domestic Self-Supply	Agriculture ⁽¹⁾	Recreation ⁽²⁾	ICI	Power Generation	TOTAL ESTIMATED WATER USE (mgd)
I	Escambia	38.546	1.642	2.998	2.179	33.498	1.297	80.159
	Region I Total	38.546	1.642	2.998	2.179	33.498	1.297	80.159
II	Okaloosa	23.898	1.164	0.410	5.203	1.664	-	32.339
	Santa Rosa	17.857	0.668	1.894	2.405	3.298	-	26.123
	Walton	11.936	0.337	0.613	3.832	0.115	-	16.834
	Region II Total	53.692	2.169	2.917	11.440	5.078	-	75.295
III	Bay	27.730	1.989	0.884	2.092	23.305	3.019	59.018
	Region III Total	27.730	1.989	0.884	2.092	23.305	3.019	59.018
IV	Calhoun	0.261	0.920	3.171	0.005	0.240	-	4.597
	Holmes	1.122	1.205	1.119	0.214	-	-	3.661
	Jackson	2.630	2.439	30.925	0.386	0.832	0.992	38.203
	Liberty	0.474	0.335	0.114	0.002	0.289	0.206	1.420
	Washington	0.978	1.667	0.790	0.311	0.283	-	4.029
	Region IV Total	5.465	6.565	36.120	0.918	1.645	1.197	51.910
V	Franklin	1.769	0.065	0.007	0.165	0.017	-	2.023
	Gulf	2.847	0.277	0.297	0.104	0.166	-	3.691
	Region V Total	4.616	0.342	0.304	0.269	0.183	-	5.714
VI	Gadsden	4.272	1.186	4.912	0.149	0.435	-	10.954
	Region VI Total	4.272	1.186	4.912	0.149	0.435	-	10.954
VII	Jefferson ^(NWF Only)	0.589	0.419	1.006	0.584	-	-	2.598
	Leon	29.662	3.161	0.483	3.020	0.084	2.500	38.910
	Wakulla	2.794	0.815	0.134	0.209	1.119	0.207	5.278
	Region VII Total	33.045	4.395	1.623	3.812	1.203	2.707	46.785
TOTALS		167.365	18.287	49.758	20.858	65.347	8.220	329.835
Percent of Total Water Use:		50.7%	5.5%	15.1%	6.3%	19.8%	2.5%	100%

Total annual average daily rate (ADR) estimated water use in million gallons per day (mgd).

(1) FSAID IX - 2020 estimated water use based on average hypothetical precipitation.

(2) Estimate of 2021 reported recreational water use and additional estimating methods and data used in the 2018 WSA.

Total Estimated Water Withdrawals by Source (mgd)

Planning Region	County / Region	Coastal Floridan	Inland Floridan	Inter-mediate	Claiborne	Sand and Gravel	Surficial	Total Ground-water	Total Other Water ⁽¹⁾	Total Surface Water	TOTAL ESTIMATED WATER USE (mgd)
I	Escambia	-	-	-	-	72.419	0.124	72.543	5.722	1.894	80.160
	Region Totals	-	-	-	-	72.419	0.124	72.543	5.722	1.894	80.160
II	Okaloosa	12.852	9.167	-	-	1.300	-	23.319	3.351	2.210	28.879
	Santa Rosa	0.749	0.379	-	-	20.951	-	22.079	3.556	0.487	26.123
	Walton	1.261	15.001	0.146	-	0.954	0.249	17.611	1.346	1.336	20.293
	Region Totals	14.863	24.546	0.146	-	23.206	0.249	63.009	8.253	4.033	75.295
III	Bay	0.240	3.353	-	-	0.015	0.362	3.971	3.270	51.777	59.018
	Region Totals	0.240	3.353	-	-	0.015	0.362	3.971	3.270	51.777	59.018
IV	Calhoun	-	1.566	-	-	-	-	1.566	3.018	0.012	4.597
	Holmes	-	0.826	-	0.259	-	-	1.085	2.538	-	3.623
	Jackson	-	20.236	-	0.166	-	-	20.402	16.814	0.988	38.203
	Liberty	-	0.894	-	-	-	0.073	0.967	0.451	0.001	1.420
	Washington	-	1.598	-	-	-	-	1.598	2.453	0.016	4.066
	Region Totals	-	25.120	-	0.425	-	0.073	25.618	25.275	1.017	51.910
V	Franklin	1.787	-	-	-	-	-	1.787	0.126	0.111	2.023
	Gulf	0.465	0.532	0.024	-	-	0.023	1.043	0.444	2.204	3.691
	Region Totals	2.251	0.532	0.024	-	-	0.023	2.830	0.570	2.314	5.714
VI	Gadsden	-	6.091	-	-	-	-	6.091	3.680	1.182	10.953
	Region Totals	-	6.091	-	-	-	-	6.091	3.680	1.182	10.953
VII	Jefferson ^(NWF Only)	-	1.610	-	-	-	-	1.610	0.987	-	2.598
	Leon	-	34.474	-	-	-	-	34.474	4.163	0.771	39.408
	Wakulla	-	3.419	-	-	-	-	3.419	1.153	0.207	4.779
	Region Totals	-	39.503	-	-	-	-	39.503	6.303	0.979	46.785
DISTRICT TOTALS		17.354	99.146	0.169	0.425	95.640	0.832	213.566	53.073	63.196	329.836
Percentages		8.1%	46.4%	0.1%	0.2%	44.8%	0.4%	64.7%	16.1%	19.2%	100%

(1) "Other Water" refers to estimated withdrawals, but source is unknown or uncertain. Domestic Self-Supply (DSS) water use is estimated with population estimates and a per capita water use rate: groundwater withdrawn from domestic or limited public supply wells is assumed but no specific water source or aquifer is identified. Additional estimating methods for Agriculture and Recreational Irrigation also have uncertain water sources. Gadsden County agricultural water use is on average 50-50 surface and groundwater. Recreational water use is often a complex water flow system of both ground and surface waters and at times co-mingled with reclaimed water.

Population Estimates - County, Public Supply Utility, and Domestic Self-Supply

Planning Region	County / Region	2010-2020 Population Change % ⁽¹⁾	BEBR 2021 County Permanent Populations ⁽²⁾	Seasonal Rate % County Average	County Seasonal ⁽³⁾ Adjustments	TOTAL ⁽⁴⁾ County Population Estimates	Public Supply Populations Served ⁽⁵⁾	% of TOTAL	DSS-Other Population Estimates ⁽⁶⁾	% of TOTAL
I	Escambia	9.0%	324,458	3.2%	10,383	334,841	316,328	94.5%	18,513	5.5%
	Total/Average	9.0%	324,458	3.2%	10,383	334,841	316,328	94.5%	18,513	5.5%
II	Okaloosa	17.9%	213,204	9.0%	19,188	232,392	219,270	94.4%	13,122	5.6%
	Santa Rosa	26.8%	191,911	2.0%	3,838	195,749	188,211	96.1%	7,538	3.9%
	Walton	41.6%	77,941	49.0%	38,191	116,132	112,331	96.7%	3,801	3.3%
	Total/Average	24.7%	483,056	20.0%	61,218	544,273	519,813	95.5%	24,461	4.5%
III	Bay	5.6%	178,282	12.0%	21,394	199,676	177,249	88.8%	22,427	11.2%
	Total/Average	5.6%	178,282	12.0%	21,394	199,676	177,249	88.8%	22,427	11.2%
IV	Calhoun	-6.4%	13,683	3.0%	410	14,094	3,722	26.4%	10,371	73.6%
	Holmes	-1.3%	19,665	1.0%	197	19,862	6,276	31.6%	13,586	68.4%
	Jackson	-5.1%	47,198	3.0%	1,416	48,614	21,111	43.4%	27,503	56.6%
	Liberty	-10.8%	7,464	9.0%	672	8,136	4,356	53.5%	3,780	46.5%
	Washington	0.4%	24,995	3.0%	750	25,745	6,946	27.0%	18,799	73.0%
	Total/Average	-3.9%	113,005	3.8%	3,445	116,450	42,411	36.4%	74,039	63.6%
V	Franklin	7.1%	12,364	39.0%	4,822	17,186	16,453	95.7%	734	4.3%
	Gulf	-6.5%	14,824	22.0%	3,261	18,086	14,957	82.7%	3,129	17.3%
	Total/Average	-0.8%	27,188	30.5%	8,083	35,272	31,410	89.1%	3,862	10.9%
VI	Gadsden	-5.6%	43,813	2.4%	1,052	44,865	31,489	70.2%	13,376	29.8%
	Total/Average	-5.6%	43,813	2.4%	1,052	44,865	31,489	70.2%	13,376	29.8%
VII	Jefferson ^(NWF Only)	-1.2%	10,296	3.5%	360	10,657	5,935	55.7%	4,722	44.3%
	Leon	7.4%	295,921	0.5%	1,480	297,401	261,756	88.0%	35,644	12.0%
	Wakulla	11.5%	34,311	5.0%	1,716	36,027	26,833	74.5%	9,193	25.5%
	Total/Average	7.5%	340,528	3.0%	3,556	344,084	294,525	85.6%	49,558	14.4%
TOTALS/AVERAGES		10.9%	1,510,330	7.2%	109,129	1,619,459	1,413,223	87.3%	206,237	12.7%

(1) Source: University of Florida (UF), Bureau of Economic and Business Research (BEBR), Population Studies Program, <https://www.bebr.ufl.edu/population>.

(2) UF BEBR, Population Studies Program, Vol. 54, Bulletin 189, April 2021. Permanent population estimates only, but includes estimated inmate populations.

(3) Estimated seasonal populations based on county average seasonal rates applied to BEBR population estimates.

(4) Total county populations adjusted by adding the estimated seasonal populations to BEBR estimate.

(5) The population served by each public supply utility service area is estimated from review of all available data, including compliance submissions, and include seasonal population estimates where applicable.

(6) Net Domestic Self-Supply (DSS) population estimates are derived by subtracting public supply utility populations served from adjusted county totals. This estimate includes other miscellaneous populations, e.g., small public systems and correctional facility inmates not otherwise accounted for.

1.1 Public Supply Water Withdrawn, Demand, Populations Served, and Per Capita Water Use

Planning Region	County / Region	Withdrawals and Water Demand (mgd)				Populations and Per Capita Water Use (gpcd)		
		Reported Pumpage	Imports	Exports	Finished Water Demand	Public Supply Adjusted ⁽¹⁾ Population Served	Average GROSS Per Capita Water Use	Average RESIDENTIAL Per Capita Water Use
I	Escambia	38.546	-	-	38.546	314,715	122.48	81.25
	Totals/Average Per Capita	38.546	0.000	0.000	38.546	314,715	122.48	81.25
II	Okaloosa	20.439	3.459	-	23.898	219,270	108.99	83.21
	Santa Rosa	17.857	7.288	7.288	17.857	185,881	96.19	67.34
	Walton	15.396	2.897	6.356	11.936	112,331	106.26	69.78
	Totals/Average Per Capita	53.692	13.644	13.644	53.692	517,482	103.76	74.60
III	Bay	27.730	26.584	26.584	27.730	173,261	162.99	79.08
	Totals/Average Per Capita	27.730	26.584	26.584	27.730	173,261	162.99	79.08
IV	Calhoun	0.261	-	-	0.261	3,722	70.03	75.61
	Holmes	1.085	0.038	-	1.122	6,276	178.84	60.28
	Jackson	2.630	-	-	2.630	21,111	124.58	61.85
	Liberty	0.474	-	-	0.474	4,356	108.79	87.80
	Washington	1.016	-	0.038	0.978	6,946	140.78	90.74
	Totals/Average Per Capita	5.465	0.038	0.038	5.465	42,410	128.85	70.22
V	Franklin	1.769	0.092	0.092	1.769	16,453	107.53	60.47
	Gulf	2.847	-	-	2.847	14,957	190.35	52.84
	Totals/Average Per Capita	4.616	0.092	0.092	4.616	31,410	146.96	56.84
VI	Gadsden	4.272	-	-	4.272	31,489	135.66	81.88
	Totals/Average Per Capita	4.272	0.000	0.000	4.272	31,489	135.66	81.88
VII	Jefferson ^(NWF Only)	0.589	-	-	0.589	5,935	99.22	78.06
	Leon	30.160	-	0.498	29.662	261,756	113.32	56.55
	Wakulla	2.296	0.498	-	2.794	26,833	104.11	79.16
	Totals/Average Per Capita	33.045	0.498	0.498	33.045	294,525	112.20	59.05
DISTRICT TOTALS/AVERAGE		167.365	40.856	40.856	167.365	1,405,291	119.10	73.01

(1) Populations served include seasonal resident adjustments.

1.2 Public Supply Water Withdrawals by Source (mgd)

Planning Region	County / Region	Coastal Floridan	Inland Floridan	Inter-mediate	Claiborne	Sand and Gravel	Surficial	Total Groundwater	Total Surface Water	TOTAL REPORTED WATER USE
I	Escambia	-	-	-	-	38.547	-	38.547	-	38.547
	Region Totals	-	-	-	-	38.547	-	38.547	-	38.547
II	Okaloosa	12.418	8.021	-	-	-	-	20.439	-	20.439
	Santa Rosa	0.749	0.253	-	-	16.856	-	17.857	-	17.857
	Walton	1.261	14.065	0.069	-	-	-	15.396	-	15.396
	Region Totals	14.429	22.338	0.069	-	16.856	-	53.692	-	53.692
III	Bay ⁽¹⁾	-	1.656	-	-	-	-	1.656	26.073	27.730
	Region Totals	-	1.656	-	-	-	-	1.656	26.073	27.730
IV	Calhoun	-	0.261	-	-	-	-	0.261	-	0.261
	Holmes	-	0.826	-	0.259	-	-	1.085	-	1.085
	Jackson	-	2.523	-	0.107	-	-	2.630	-	2.630
	Liberty	-	0.474	-	-	-	-	0.474	-	0.474
	Washington	-	1.016	-	-	-	-	1.016	-	1.016
	Region Totals	-	5.098	-	0.366	-	-	5.465	-	5.465
V	Franklin	1.769	-	-	-	-	-	1.769	-	1.769
	Gulf	0.465	0.178	0.000	-	-	-	0.643	2.204	2.847
	Region Totals	2.234	0.178	0.000	-	-	-	2.413	2.204	4.616
VI	Gadsden	-	4.272	-	-	-	-	4.272	-	4.272
	Region Totals	-	4.272	-	-	-	-	4.272	-	4.272
VII	Jefferson ^(NWF Only)	-	0.589	-	-	-	-	0.589	-	0.589
	Leon	-	30.160	-	-	-	-	30.160	-	30.160
	Wakulla	-	2.296	-	-	-	-	2.296	-	2.296
	Region Totals	-	33.045	-	-	-	-	33.045	-	33.045
DISTRICT TOTALS		16.663	66.588	0.069	0.366	55.403	-	139.089	28.277	167.366

(1) Bay County Board of County Commissioners (BCBOCC) surface water withdrawals from Deer Point Lake Reservoir exclude exports to large industrial users, and to Tyndall Air Force Base. See ICI for industrial and institutional water use estimates.

NOTE: Since 2015, public supply IWUP compliance data has been affected by adjustments in permit and reporting requirements, and by Emergency Executive Orders. As a result, the 2021 estimated public supply water use relies on DEP Monthly Operating Report (MOR) data and/or historical water use for approximately 15 percent of the total public supply utility systems.

1.3 Public Supply Water Demand, Populations Served, and Per Capita Water Use - by Utility

Planning Region	Public Supply Utility or Service Area	Withdrawals and Water Demand (mgd)				Populations and Per Capita Water Use (gpcd)		
		Reported Pumpage	Imports	Exports	Finished Water Demand	Public Supply Adjusted ⁽¹⁾ Population Served	Average GROSS Per Capita Water Use	Average RESIDENTIAL Per Capita Water Use
I	Escambia County	38.546	0.000	0.000	38.546	314,715	122.48	81.25
	Central Water Works, Inc.	0.353	-	-	0.353	2,447	144.23	68.54
	Century, Town of	0.454	-	-	0.454	3,490	130.17	110.00
	Cottage Hill Water Works, Inc.	0.372	-	-	0.372	3,562	104.45	75.91
	Emerald Coast Utilities Authority (ECUA)	32.433	-	-	32.433	257,211	126.09	83.79
	Farm Hill Utilities, Inc.	0.642	-	-	0.642	5,790	110.96	71.84
	Gonzalez Utilities Association, Inc.	0.540	-	-	0.540	4,854	111.19	71.14
	Molino Utilities, Inc.	0.963	-	-	0.963	5,578	172.57	106.99
	People's Water Service Company	2.417	-	-	2.417	28,138	85.89	57.72
	ERC Water System	0.372	-	-	0.372	3,645	102.16	58.49
	REGION I - Totals/Average Per Capita	38.546	0.000	0.000	38.546	314,715	122.48	81.25
II	Okaloosa County	20.439	3.459	0.000	23.898	219,270	108.99	83.21
	Auburn Water System	2.196	-	-	2.196	15,895	138.18	97.42
	Baker Water System	0.224	-	-	0.224	2,566	87.42	78.24
	Okaloosa Waterworks-US Water Services	0.032	-	-	0.032	573	56.10	42.07
	Crestview, City of	2.336	-	-	2.336	30,532	76.50	30.91
	Destin Water Users	1.707	2.874	-	4.551	31,049	146.57	91.29
	Fort Walton Beach, City of	2.597	-	-	2.597	24,570	105.71	52.80
	Holt Water Works, Inc.	0.239	-	-	0.239	2,146	111.52	69.14
	Laurel Hill, City of	0.105	-	-	0.105	1,549	67.94	60.73
	Mary Esther, City of	0.433	-	-	0.433	4,027	107.51	57.74
	Milligan Water System	0.137	-	-	0.137	1,729	79.26	49.14
	Niceville, City of	2.498	-	-	2.498	20,913	119.46	86.68
	OCW&S - Bluewater (Raintree)	1.167	-	-	1.167	12,823	91.03	75.38
	OCW&S - Okaloosa County Water & Sewer	3.531	-	-	3.531	-	99.28	60.55
	<i>Main Garniers</i>					44,149		52.68
	<i>Shalimar</i>					737		73.65
	<i>Okaloosa Island</i>					2,202		34.55
	<i>County West</i>					8,915		51.37
OCW&S - Mid-County (Crestview) Antioch	2.750	-	-	2.750	7,264	-	90.87	
SWUC (Okaloosa County portion)	-	0.616	-	0.616	3,346	184.06	107.10	
Valparaiso, City of	0.485	-	-	0.485	4,284	113.18	68.66	

Table 1.3, continued

Planning Region	Public Supply Utility / County / Region	Withdrawals and Water Demand (mgd)				Populations and Per Capita Water Use (gpcd)		
		Reported Pumpage	Imports	Exports	Finished Water Demand	Public Supply Adjusted ⁽¹⁾ Population Served	Average GROSS Per Capita Water Use	Average RESIDENTIAL Per Capita Water Use
II	Santa Rosa County	17.857	7.288	7.288	17.880	185,881	96.19	67.34
	Bagdad-Garcon Point Water System	0.634	-	-	0.634	5,945	106.64	79.08
	Berrydale Water System	0.301	-	-	0.301	2,630	114.52	46.96
	Chumuckla Water System	0.367	-	-	0.367	4,150	88.33	70.19
	East Milton Water System	1.734	-	-	1.734	13,541	128.07	64.07
	Fairpoint Regional Utility System (FRUS)	6.210	-	6.232	-	-	-	0.00
	Gulf Breeze Water Department (Service Area)	-	2.056	1.017	1.039	6,613	157.09	117.82
	Holley-Navarre Water System, Inc.	0.444	2.658	-	3.102	44,503	69.70	55.63
	Jay, Town of	0.155	-	-	0.155	1,115	139.08	83.81
	Midway Water System	0.588	1.041	0.038	1.591	18,036	88.20	63.74
	Milton, City of	1.884	-	-	1.884	18,520	101.73	62.86
	Moore Creek-Mt. Carmel Utilities, Inc.	0.321	-	-	0.321	3,194	100.63	62.39
	Pace Water System, Inc.	4.383	-	-	4.383	41,637	105.26	74.50
	Point Baker Water System, Inc.	0.820	-	-	0.820	9,400	87.24	72.53
	Navarre Beach - Santa Rosa BOCC	0.016	0.477	-	0.493	5,904	83.54	55.62
	South Santa Rosa Utilities (Service Area)	-	1.056	-	1.056	10,693	98.71	74.03
II	Walton County	15.396	2.897	6.356	11.936	112,331	106.26	69.78
	Argyle Water System	0.075	-	-	0.075	793	94.84	71.13
	DeFuniak Springs, City of	1.224	-	-	1.224	12,243	99.96	35.45
	FCSWC / Regional Utilities	5.511	-	0.009	5.502	59,368	92.68	70.29
	Freeport, City of	1.063	-	-	1.063	12,156	87.44	54.64
	Freeport, City of, North Bay Water System	0.125	-	-	0.125	2,216	56.40	50.52
	Inlet Beach Water System, Inc.	0.244	0.009	-	0.253	2,615	96.68	66.67
	Mossy Head Water Works, Inc.	0.304	-	-	0.304	3,806	79.86	49.52
	Paxton, City of	0.157	-	-	0.157	1,566	100.26	98.87
	SWUC - Rockhill Inland Well Field	5.731	-	5.731	0.000	-	-	-
	SWUC - Coastal Well Field	0.962	2.888	0.616	3.233	17,568	184.06	107.10
REGION II - Totals/Average Per Capita		53.692	13.644	13.644	53.714	517,482	103.80	74.60

Table 1.3, continued

Planning Region	Public Supply Utility / County / Region	Withdrawals and Water Demand (mgd)				Populations and Per Capita Water Use (gpcd)		
		Reported Pumpage	Imports	Exports	Finished Water Demand	Public Supply Adjusted ⁽¹⁾ Population Served	Average GROSS Per Capita Water Use	Average ⁽²⁾ RESIDENTIAL Per Capita Water Use
III	Bay County	27.730	26.584	26.584	27.730	173,261	160.05	79.08
	Bay County BOCC (Public Supply ONLY)	26.073	-	-	-	-	-	-
	Bay County - Cedar Grove	-	0.568	-	0.568	3,450	164.66	102.09
	Bay County - North Bay/Lake Merial	-	0.671	-	0.671	6,000	111.87	69.36
	Bay County - Bay Co. (excludes North Bay, Lk Merial, SE)	-	1.087	-	1.087	9,500	114.46	70.97
	Bay County BOCC - Total Exports	-	-	26.584	-	-	-	-
	Callaway	-	1.334	-	1.334	15,269	87.34	54.15
	Lynn Haven, City of	1.656	0.512	-	2.168	20,244	107.11	65.19
	Mexico Beach	-	0.191	-	0.191	2,488	76.77	47.60
	Panama City Water System	-	6.185	-	6.185	42,376	145.95	77.35
	Panama City Beach	-	14.664	-	14.664	61,798	237.29	94.92
	Parker	-	0.328	-	0.328	4,027	81.33	50.42
	Springfield	-	1.044	-	1.044	8,109	128.76	79.83
	REGION III - Totals/Average Per Capita	27.730	26.584	26.584	27.730	173,261	160.05	79.08

NOTE: The Bay County Board of County Commissioners (BOCC) water utility serves the majority of service areas (except for parts of the City of Lynn Haven) in Bay County. Water withdrawn and supplied to several large industrial facilities and to Tyndall Air Force Base are excluded from Public Supply and included in ICI.

(2) County-wide average estimate.

Table 1.3, continued

Planning Region	Public Supply Utility / County / Region	Withdrawals and Water Demand (mgd)				Populations and Per Capita Water Use (gpcd)		
		Reported Pumpage	Imports	Exports	Finished Water Demand	Public Supply Adjusted ⁽¹⁾ Population Served	Average GROSS Per Capita Water Use	Average RESIDENTIAL Per Capita Water Use
V	Franklin County	1.769	0.092	0.092	1.769	16,453	107.53	60.47
	Alligator Point Water Resources District	0.105	-	-	0.105	1,400	74.79	55.61
	Apalachicola, City of	0.564	-	-	0.564	3,784	150.35	58.04
	Carrabelle, City of	0.285	-	0.092	0.193	2,766	69.91	43.34
	- Carrabelle, City of (Lanark Village)	0.000	0.092	-	0.092	1,625	56.45	35.00
	Eastpoint Water and Sewer District	0.225	-	-	0.225	2,333	96.27	59.69
	St. James Island (Summercamp, FRWA)	0.007	-	-	0.007	56	134.96	65.50
	Water Management (St. George Island)	0.566	-	-	0.566	4,519	125.19	83.98
V	Gulf County	2.847	0.000	0.000	2.847	14,957	190.35	52.84
	Gulf County Water System	0.462	-	-	0.462	3,804	121.58	78.46
	Port St. Joe, City of	2.206	-	-	2.206	9,029	244.34	42.23
	Wewahitchka, City of	0.178	-	-	0.178	2,124	83.99	52.08
	REGION V - Totals/Average Per Capita	4.616	0.092	0.092	4.616	31,410	146.96	56.84

Table 1.3, continued

Planning Region	Public Supply Utility / County / Region	Withdrawals and Water Demand (mgd)				Populations and Per Capita Water Use (gpcd)		
		Reported Pumpage	Imports	Exports	Finished Water Demand	Public Supply Adjusted ⁽¹⁾ Population Served	Average GROSS Per Capita Water Use	Average RESIDENTIAL Per Capita Water Use
IV	Calhoun County	0.261	0.000	0.000	0.261	3,722	70.03	75.61
	Altha, Town of	0.145	-	-	0.145	692	209.01	129.59
	Blountstown	0.116	-	-	0.116	3,031	38.32	63.29
IV	Holmes County	1.085	0.038	0.000	1.122	6,276	178.84	60.28
	Bonifay, City of	0.920	-	-	0.920	4,246	216.64	67.45
	Caryville, Town of (Holmes County portion)	-	0.038	-	0.038	271	139.09	139.09
	Esto Water Works	0.024	-	-	0.024	348	69.21	42.91
	Joyce E. Snare Waterworks	0.024	-	-	0.024	254	93.88	58.21
	Noma, Town of	0.003	-	-	0.003	237	14.26	8.84
	Ponce de Leon, Town of	0.081	-	-	0.081	586	139.03	4.35
	Westville, Town of	0.032	-	-	0.032	334	95.90	59.46
IV	Jackson County	2.630	0.000	0.000	2.630	21,111	124.58	61.85
	Alford, Town of	0.060	-	-	0.060	586	102.06	40.82
	Campbellton, Town of	0.016	-	-	0.016	281	58.64	23.46
	Cottdale, City of	0.150	-	-	0.150	1,099	136.09	54.44
	Graceville, City of	0.314	-	-	0.314	2,159	145.22	57.21
	Grand Ridge, Town of	0.096	-	-	0.096	882	108.81	43.52
	Greenwood, Town of	0.039	-	-	0.039	551	70.99	28.40
	Jackson Utilities, Plant 1, JCBOCC	0.282	-	-	0.282	3,678	76.61	65.83
	Jacob, City of	0.019	-	-	0.019	219	85.47	34.19
	Malone, Town of	0.064	-	-	0.064	1,244	51.22	20.49
	Marianna, City of	1.363	-	-	1.363	8,489	160.59	79.11
	Sneads, Town of	0.228	-	-	0.228	1,840	123.83	49.53
	IV	Liberty County	0.474	0.000	0.000	0.474	4,356	108.79
Bristol, City of		0.227	-	-	0.227	1,923	118.15	118.92
Liberty Co. BOCC, Estiffanulga		0.021	-	-	0.021	281	73.20	45.39
Liberty Co. BOCC, Hosford-Telogia		0.131	-	-	0.131	1,444	90.96	56.40
Liberty Co. BOCC, Lake Mystic		0.039	-	-	0.039	314	124.50	77.19
Liberty Co. BOCC, Rock Bluff		0.033	-	-	0.033	166	200.38	124.24
Liberty Co. BOCC, Sumatra Water System		0.016	-	-	0.016	163	96.60	59.89
Talquin Electric - Sweetwater System		0.007	-	-	0.007	65	102.46	76.84
IV	Washington	1.016	0.000	0.038	0.978	6,946	140.78	90.74
	Sunny Hills (formerly Aqua Utilities)	0.115	-	-	0.115	1,413	81.48	44.54
	Caryville, Town of	0.126	-	0.038	0.088	426	206.51	206.51
	Chipley, City of	0.613	-	-	0.613	3,885	157.82	98.85
	Vernon, City of	0.100	-	-	0.100	734	135.62	77.42
	Wausau, Town of	0.062	-	-	0.062	488	127.25	78.89
REGION IV - Totals/Average Per Capita		5.465	0.038	0.038	5.465	42,410	128.85	70.22

Table 1.3, continued

Planning Region	Public Supply Utility / County / Region	Withdrawals and Water Demand (mgd)				Populations and Per Capita Water Use (gpcd)		
		Reported Pumpage	Imports	Exports	Finished Water Demand	Public Supply Adjusted ⁽¹⁾ Population Served	Average GROSS Per Capita Water Use	Average RESIDENTIAL Per Capita Water Use
VI	Gadsden County	4.272	0.000	0.000	4.272	31,489	135.66	81.88
	Chattahoochee, City of	0.491	-	-	0.491	2,741	179.01	64.23
	Greensboro, Town of	0.069	-	-	0.069	635	109.02	49.43
	Gretna, City of	0.254	0.115	-	0.368	1,483	248.47	154.05
	Havana, Town of	0.460	-	-	0.460	3,551	129.45	80.26
	Quincy, City of	1.352	-	0.115	1.237	10,391	124.17	76.99
	Talquin Electric - Gadsden County Regional	1.619	-	-	1.619	12,792	126.53	83.60
	Talquin Electric - Hammock Creek	0.005	-	-	0.005	40	115.64	86.73
	Talquin Electric - Jamieson Water	0.013	-	-	0.013	107	122.16	91.62
	Talquin Electric - St. James	0.010	-	-	0.010	175	57.82	43.37
	REGION VI - Totals/Average Per Capita	4.272	0.000	0.000	4.272	31,489	135.66	81.88
VII	Jefferson County ^(NWF Only)	0.589	0.000	0.000	0.589	5,935	99.22	78.06
	Jefferson Communities Water System, Inc.	0.209	-	-	0.209	1,945	107.69	91.63
	Monticello, City of	0.379	-	-	0.379	3,990	95.09	71.45
	Leon County	30.160	0.000	0.498	29.662	261,756	113.32	56.55
	Seminole-Rowe (total all service areas)	0.126	-	-	0.126	1,601	78.84	53.33
	Tallahassee, City of	26.141	-	0.498	25.643	227,849	112.54	53.33
	Talquin Electric - Bradfordville Regional	1.539	-	-	1.539	11,445	134.44	83.35
	Talquin Electric - Lake Jackson Regional	1.167	-	-	1.167	10,360	112.64	71.97
	Talquin Electric - Leon County East Regional	0.259	-	-	0.259	1,990	130.38	104.78
	Talquin Electric - Leon County West Regional	0.296	-	-	0.296	2,205	134.35	79.60
	Talquin Electric - Meadows Regional	0.449	-	-	0.449	4,001	112.26	84.14
	Talquin Electric Coop Small Systems (total)	0.078	-	-	0.078	1,222	63.92	47.94
	Miscellaneous Small Public Systems (total)	0.104	-	-	0.104	1,083	96.43	72.32
	Wakulla County	2.296	0.498	0.000	2.794	26,833	104.11	79.16
	Panacea Area Water System, Inc.	0.222	-	-	0.222	2,556	86.76	53.79
	Sopchoppy, City of	0.936	-	-	0.936	10,847	86.32	82.51
	St. Marks, City of, Water Sys. (COT Booster Plant)	-	0.157	-	0.157	708	221.71	137.46
	Tallahassee, City of (Wakulla County portion)	-	0.341	-	0.341	2,971	114.81	61.35
	Talquin Electric - Wakulla Regional	1.102	-	-	1.102	9,475	116.30	82.88
Talquin Electric - Wakulla County River Sink	0.036	-	-	0.036	276	128.72	96.54	
	REGION VII - Totals/Average Per Capita	33.045	0.498	0.498	33.045	294,525	112.20	59.05
NFWFMD Districtwide TOTALS / Averages -		167.365	40.856	40.856	167.387	1,405,291	119.11	73.01

2.1 Domestic Self-Supply Population and Water Use Estimates

Planning Region	County / Region	DSS ⁽¹⁾ Pop Estimate	Estimated DSS Water Use ⁽²⁾ (mgd)	Adjusted DSS Populations ⁽³⁾	GROSS DSS ⁽⁴⁾ Well Count	BEBR 2021 PPH ⁽⁵⁾	Estimated Persons Per Well	Estimated Water Use ⁽⁶⁾ (mgd)
I	Escambia	18,513	1.642	16,485	1,437	2.36	11.47	0.301
	Total/Average	18,513	1.642	16,485	1,437	2.36	11.47	0.301
II	Okaloosa	13,122	1.164	11,879	2,788	2.47	4.26	0.611
	Santa Rosa	7,538	0.668	5,343	4,002	2.62	1.34	0.930
	Walton	3,801	0.337	3,801	8,224	2.44	0.46	1.779
	Total/Average	24,461	2.169	21,023	15,014	2.51	2.02	3.320
III	Bay	22,427	1.989	21,307	13,108	2.46	1.63	2.859
	Total/Average	22,427	1.989	21,307	13,108	2.46	1.63	2.859
IV	Calhoun	10,371	0.920	9,660	3,776	2.47	2.56	0.827
	Holmes	13,586	1.205	12,580	4,620	2.44	2.72	1.000
	Jackson	27,503	2.439	25,016	10,729	2.39	2.33	2.274
	Liberty	3,780	0.335	2,636	1,356	2.44	1.94	0.293
	Washington	18,799	1.667	18,087	7,465	2.52	2.42	1.668
	Total/Average	74,039	6.565	67,979	27,946	2.45	2.40	6.062
V	Franklin	734	0.065	734	1,108	2.22	0.66	0.218
	Gulf	3,129	0.277	4,308	1,874	2.33	2.30	0.387
	Total/Average	3,862	0.342	5,041	2,982	2.28	1.48	0.605
VI	Gadsden	13,376	1.186	10,738	3,803	2.48	2.82	0.836
	Total/Average	13,376	1.186	10,738	3,803	2.48	2.82	0.836
VII	Jefferson ^(NWF Only)	4,722	0.419	4,722	2,302	2.31	2.05	0.472
	Leon	35,644	3.161	34,549	9,176	2.29	3.77	1.863
	Wakulla	9,193	0.815	8,087	4,165	2.53	1.94	0.934
	Total/Average	49,559	4.395	47,358	15,643	2.38	2.59	3.269
TOTALS/AVERAGES		206,238	18.287	189,932	79,933	2.42	2.58	17.252

(1) Domestic Self-Supply (DSS) includes small limited public supply systems and inmate populations that are not reported or estimated in the public supply water use category.

(2) Estimated water use based on DSS population estimate multiplied by a USGS per capita Districtwide estimated rate of 88.67 gpcd (USGS, 2014).

(3) "Adjusted DSS Populations" is an experimental estimate with inmate population refinements not otherwise accounted for.

(4) Estimates of all known DSS (DO) and limited public supply (LP) wells in NFWFMD wells inventory ArcGIS database as of 12/31/2021.

(5) County-wide average persons per household (PPH) based on UF Bureau of Economic and Business Research (BEBR) 2021 population estimate data.

(6) For information or comparison only: estimated water use, based on number of known wells x BEBR average PPH x USGS per capita water use rate of 88.67 gpcd.

2.2 Domestic Self-Supply Population Estimates Over Time

Planning Region	County / Region	WSA 2013	NFWMD Annual Water Use Reports ⁽¹⁾									
		2010	2012	2013	2014 ⁽²⁾	2015	2016	2017	2018	2019	2020	2021
I	Escambia	16,606	19,133	17,720	18,809	12,017	11,958	11,242	15,118	17,231	20,903	18,513
	Region I Total	16,606	19,133	17,720	18,809	12,017	11,958	11,242	15,118	17,231	20,903	18,513
II	Okaloosa	12,367	13885	11,731	12,224	23,940	18,595	9,375	12,916	10,382	10,010	13,122
	Santa Rosa	22,402	11584	11,772	8,907	2,890	1,794	10,368	13,228	11,997	10,468	7,538
	Walton	4,218	14117	13,106	16,009	17,616	11,508	15,896	16,019	10,997	4,793	3,801
	Region II Total	38,987	39,586	36,609	37,140	44,446	31,897	35,639	42,163	33,377	25,270	24,461
III	Bay	17,892	18436	17,930	18,538	17,743	16,364	19,142	21,767	15,884	23,579	22,427
	Region III Total	17,892	18,436	17,930	18,538	17,743	16,364	19,142	21,767	15,884	23,579	22,427
IV	Calhoun	10,423	10435	10,415	10,311	10,417	11,237	11,699	11,808	10,752	11,201	10,371
	Holmes	13,929	14275	14,328	14,316	14,554	14,659	14,502	14,436	13,761	13,712	13,586
	Jackson	33,022	34163	34,666	34,491	35,409	35,244	36,528	33,333	29,367	27,148	27,503
	Liberty	5,092	4410	4,407	4,584	5,478	5,460	5,485	5,679	5,361	5,101	3,780
	Washington	16,420	17642	17,255	17,501	18,814	18,765	19,285	19,087	19,015	19,153	18,799
	Region IV Total	78,886	80,925	81,071	81,203	84,672	85,366	87,499	84,343	78,256	76,315	74,039
V	Franklin	1,785	2967	1,772	1,611	1,821	1,843	3,668	2,034	1,287	742	734
	Gulf	2,487	2071	2,005	475	3,629	3,774	5,512	5,182	1,902	3,431	3,129
	Region V Total	4,272	5,038	3,777	2,086	5,450	5,617	9,180	7,216	3,189	4,173	3,862
VI	Gadsden	15,173	16119	15,095	16,286	17,085	17,155	18,731	18,750	16,958	15,758	13,376
	Region VI Total	15,173	16,119	15,095	16,286	17,085	17,155	18,731	18,750	16,958	15,758	13,376
VII	Jefferson ^(NWF Only)	9,350	5588	10,237	7,800	5,160	5,216	5,421	5,989	5,116	4,754	4,722
	Leon	59,552	75085	74,538	57,952	51,884	51,414	32,616	38,154	36,527	38,858	35,644
	Wakulla	24,872	9110	7,987	8,007	9,591	9,516	8,886	9,018	10,980	8,894	9,193
	Region VII Total	93,774	89,783	92,762	73,759	66,635	66,147	46,923	53,161	52,622	52,506	49,558
TOTALS		265,590	269,020	264,964	247,821	248,048	234,504	228,356	242,518	217,517	218,505	206,237

(1) Population estimates from 2015 to date include seasonal population adjustments. County total BEBR estimates are adjusted with estimated impacts of seasonal residents, and public supply populations served also includes estimates of seasonal residents where applicable. District studies indicate that approximately 10% of seasonal populations are in the domestic self-supply water use category. Therefore, the net county populations not served by public supply, i.e. DSS, also include seasonal resident estimates.

(2) Year 2014 included seasonal population adjustments in public supply utility populations served in Walton and Franklin counties.

3.1 Agricultural Water Use Reported and Total Estimates (mgd)

2021 Reported Water Use

Planning Region	County / Region	Ground Water	Surface Water	Total REPORTED Water Use ⁽¹⁾	Percent Reported to Total Estimate	Additional FSAID ⁽²⁾ Estimated Water Use	FSAID IX - 2020 Estimated TOTAL Water Use ⁽³⁾	FSAID VIII - 2019 Estimated TOTAL Water Use ⁽⁴⁾
I	Escambia	0.030	-	0.030	1.0%	2.968	2.998	2.487
	Region I Total	0.030	0.000	0.030	1.0%	2.968	2.998	2.487
II	Okaloosa	-	-	0.000	0.0%	0.410	0.410	0.409
	Santa Rosa	0.400	-	0.400	21.1%	1.494	1.894	1.808
	Walton	0.440	-	0.440	71.8%	0.173	0.613	0.534
	Region II Total	0.840	0.000	0.840	28.8%	2.077	2.917	2.751
III	Bay	0.468	-	0.468	52.9%	0.416	0.884	0.888
	Region III Total	0.468	0.000	0.468	52.9%	0.416	0.884	0.888
IV	Calhoun	1.065	0.012	1.077	34.0%	2.093	3.171	2.831
	Holmes	-	-	0.000	0.0%	1.119	1.119	1.116
	Jackson	16.811	0.125	16.936	54.8%	13.989	30.925	29.648
	Liberty	-	-	0.000	0.0%	0.114	0.114	0.096
	Washington	0.002	0.016	0.018	2.3%	0.772	0.790	0.949
	Region IV Total	17.879	0.153	18.031	49.9%	18.088	36.120	34.639
V	Franklin	-	-	0.000	0.0%	0.007	0.007	0.006
	Gulf	0.188	-	0.188	63.1%	0.110	0.297	0.299
	Region V Total	0.188	0.000	0.188	61.7%	0.116	0.304	0.305
VI	Gadsden	1.382	1.148	2.530	51.5%	2.383	4.912	5.812
	Region VI Total	1.382	1.148	2.530	51.5%	2.383	4.912	5.812
VII	Jefferson ^(NWF Only)	0.627	-	0.627	62.3%	0.380	1.006	1.096
	Leon	0.140	-	0.140	28.9%	0.343	0.483	0.437
	Wakulla	-	-	0.000	0.0%	0.134	0.134	0.698
	Region VII Total	0.766	0.000	0.766	47.2%	0.857	1.623	2.231
TOTALS		21.552	1.300	22.853	45.9%	26.905	49.758	49.112

(1) In 2021, approximately 33% of agriculture IWUPs had reported water use and were audited. Where appropriate, the previous year reported use was carried forward.

(2) Florida Statewide Agricultural Irrigation Demand (FSAID), Florida Department of Agriculture and Consumer Services (DACS), Office of Agricultural Water Policy. This column indicates the approximate water that is estimated to be used (but not required to be reported) in northwest Florida.

(3) FSAID estimate based on average hypothetical rainfall (modeled results).

(4) Previous FSAID estimates for information and reference only.

3.2 Agricultural Reported Water Use by Source (mgd)

Planning Region	County / Region	Water Use by Groundwater Aquifer(s)						Total Ground-water	Total Surface Water	TOTAL 2021 REPORTED WATER USE	TOTAL 2020 REPORTED WATER USE ⁽¹⁾
		Coastal Floridan	Inland Floridan	Inter-mediate	Claiborne	Sand-and-Gravel	Surficial				
I	Escambia	-	-	-	-	0.030	-	0.030	-	0.030	0.030
	Region I Total	-	-	-	-	0.030	-	0.030	-	0.030	0.030
II	Okaloosa	-	-	-	-	-	-	-	-	0.000	0.000
	Santa Rosa	-	0.126	-	-	0.273	-	0.400	-	0.400	0.416
	Walton	-	0.440	-	-	-	-	0.440	-	0.440	0.185
	Region II Total	-	0.566	-	-	0.273	-	0.840	-	0.840	0.601
III	Bay	-	0.468	-	-	-	-	0.468	-	0.468	0.468
	Region III Total	-	0.468	-	-	-	-	0.468	-	0.468	0.468
IV	Calhoun	-	1.065	-	-	-	-	1.065	0.012	1.077	1.476
	Holmes	-	-	-	-	-	-	-	-	0.000	0.000
	Jackson	-	16.811	-	-	-	-	16.811	0.125	16.936	17.469
	Liberty	-	-	-	-	-	-	-	-	0.000	0.000
	Washington	-	0.002	-	-	-	-	0.002	0.016	0.018	0.083
	Region IV Total	-	17.879	-	-	-	-	17.879	0.153	18.031	19.028
V	Franklin	-	-	-	-	-	-	-	-	0.000	0.000
	Gulf	-	0.188	-	-	-	-	0.188	-	0.188	0.285
	Region V Total	-	0.188	-	-	-	-	0.188	-	0.188	0.285
VI	Gadsden	-	1.382	-	-	-	-	1.382	1.148	2.530	3.322
	Region VI Total	-	1.382	-	-	-	-	1.382	1.148	2.530	3.322
VII	Jefferson ^(NWF Only)	-	0.627	-	-	-	-	0.627	-	0.627	0.966
	Leon	-	0.140	-	-	-	-	0.140	-	0.140	0.031
	Wakulla	-	-	-	-	-	-	-	-	0.000	0.000
	Region VII Total	-	0.766	-	-	-	-	0.766	-	0.766	0.997
	TOTALS	-	21.249	-	-	0.303	-	21.552	1.300	22.853	24.731

(1) Reported agricultural water use in previous calendar years for information and reference only.

4.1 Recreational Irrigation Water Use - Reported and Total Estimates (mgd)

Planning Region	County / Region	2021 Reported Water Use			Additional Water Use Estimates ⁽¹⁾			ESTIMATED TOTAL WATER USE		
		Ground-water	Surface Water	Total District REPORTED Water Use	Ground-water	Surface Water	Total Additional Estimates	Ground-water	Surface Water	Estimated TOTAL Water Use
I	Escambia	0.301	0.765	1.066	1.113	0.000	1.113	1.414	0.765	2.179
	Region I Total	0.301	0.765	1.066	1.113	0.000	1.113	1.414	0.765	2.179
II	Okaloosa	1.216	2.210	3.425	1.778	0.000	1.778	2.993	2.210	5.203
	Santa Rosa	0.524	0.112	0.636	1.394	0.375	1.769	1.918	0.487	2.405
	Walton	1.660	1.149	2.809	0.836	0.187	1.023	2.496	1.336	3.832
	Region II Total	3.400	3.471	6.870	4.007	0.562	4.570	7.407	4.033	11.440
III	Bay	0.624	0.602	1.226	0.866	0.000	0.866	1.490	0.602	2.092
	Region III Total	0.624	0.602	1.226	0.866	0.000	0.866	1.490	0.602	2.092
IV	Calhoun	0.000	0.000	0.000	0.005	0.000	0.005	0.005	0.000	0.005
	Holmes	0.000	0.000	0.000	0.214	0.000	0.214	0.214	0.000	0.214
	Jackson	0.000	0.000	0.000	0.386	0.000	0.386	0.386	0.000	0.386
	Liberty	0.000	0.000	0.000	0.002	0.000	0.002	0.002	0.000	0.002
	Washington	0.297	0.000	0.297	0.014	0.000	0.014	0.311	0.000	0.311
	Region IV Total	0.297	0.000	0.297	0.621	0.000	0.621	0.918	0.000	0.918
V	Franklin	0.000	0.111	0.111	0.054	0.000	0.054	0.054	0.111	0.165
	Gulf	0.047	0.000	0.047	0.057	0.000	0.057	0.104	0.000	0.104
	Region V Total	0.047	0.111	0.157	0.111	0.000	0.111	0.158	0.111	0.269
VI	Gadsden	0.003	0.035	0.038	0.111	0.000	0.111	0.114	0.035	0.149
	Region VI Total	0.003	0.035	0.038	0.111	0.000	0.111	0.114	0.035	0.149
VII	Jefferson ^(NWF Only)	0.395	0.000	0.395	0.189	0.000	0.189	0.584	0.000	0.584
	Leon	1.590	0.531	2.121	0.659	0.240	0.899	2.248	0.771	3.020
	Wakulla	0.005	0.000	0.005	0.204	0.000	0.204	0.209	0.000	0.209
	Region VII Total	1.989	0.531	2.521	1.052	0.240	1.292	3.041	0.771	3.812
	TOTALS	6.661	5.514	12.175	7.881	0.802	8.683	14.541	6.316	20.858

(1) Additional water use estimates include Individual Water Use Permits (IWUPs) with no reporting requirements, and estimates of water use from residential and other small-scale recreational wells with General Water Use Permits (GWUPs). Estimates developed from 2015 data for the 2018 WSA.

4.2 Recreational Irrigation Reported Water Use by Source (mgd)

Planning Region	County / Region	Water Use by Groundwater Aquifer(s)						Total Groundwater	Net Surface Water ⁽¹⁾	TOTAL REPORTED WATER USE ⁽¹⁾
		Coastal Floridan	Inland Floridan	Inter-mediate	Claiborne	Sand-and-Gravel	Surficial			
I	Escambia	-	-	-	-	0.280	0.021	0.301	0.765	1.066
	Region I Total	-	-	-	-	0.280	0.021	0.301	0.765	1.066
II	Okaloosa	-	0.020	-	-	1.196	-	1.216	2.210	3.425
	Santa Rosa	-	-	-	-	0.524	-	0.524	0.112	0.636
	Walton	-	0.460	0.077	-	0.954	0.169	1.660	1.149	2.809
	Region II Total	-	0.479	0.077	-	2.674	0.169	3.400	3.471	6.870
III	Bay	0.223	0.024	-	-	0.015	0.362	0.624	0.602	1.226
	Region III Total	0.223	0.024	-	-	0.015	0.362	0.624	0.602	1.226
IV	Calhoun	-	-	-	-	-	-	-	-	-
	Holmes	-	-	-	-	-	-	-	-	-
	Jackson	-	-	-	-	-	-	-	-	-
	Liberty	-	-	-	-	-	-	-	-	-
	Washington	-	0.297	-	-	-	-	0.297	-	0.297
Region IV Total	-	0.297	-	-	-	-	0.297	-	0.297	
V	Franklin	-	-	-	-	-	-	-	0.111	0.111
	Gulf	-	-	0.023	-	-	0.023	0.047	-	0.047
	Region V Total	-	-	0.023	-	-	0.023	0.047	0.111	0.157
VI	Gadsden	-	0.003	-	-	-	-	0.003	0.035	0.038
	Region VI Total	-	0.003	-	-	-	-	0.003	0.035	0.038
VII	Jefferson ^(NWF Only)	-	0.395	-	-	-	-	0.395	-	0.395
	Leon	-	1.590	-	-	-	-	1.590	0.531	2.121
	Wakulla	-	0.005	-	-	-	-	0.005	-	0.005
	Region VII Total	-	1.989	-	-	-	-	1.989	0.531	2.520
TOTALS		0.223	2.792	0.100	-	2.969	0.576	6.661	5.514	12.175

(1) Recreational water use systems are often complex water flows between ground and surface waters. Groundwater withdrawals sometimes supplement surface water ponds, and at times, may be co-mingled with reclaimed water. Net surface water, and total water use, are adjusted and estimated accordingly.

NOTE: Of the current 92 recreational IWUPs, pumping reports and audits have been completed as of 11/1/2021 for 75 or about 80 percent of Permittees. For IWUPs without pumping audits, where appropriate, the previous year reported use is carried forward as a proxy for 2020 estimated water use. These "proxy estimates" occur in six counties: Bay, Escambia, Leon, Santa Rosa, Okaloosa, and Walton.

5.1 Industrial-Commercial-Institutional (ICI) Reported Water Use by Source (mgd)

Planning Region	County / Region	Water Use by Groundwater Aquifer(s)						Total Groundwater	Total Surface Water	TOTAL WATER USE ⁽¹⁾
		Coastal Floridan	Inland Floridan	Inter-mediate	Claiborne	Sand-and-Gravel	Surficial			
I	Escambia	-	-	-	-	32.814	0.103	32.917	0.580	33.498
	Region I Total	-	-	-	-	32.814	0.103	32.917	0.580	33.498
II	Okaloosa	0.433	1.126	-	-	0.104	-	1.664	-	1.664
	Santa Rosa	-	-	-	-	3.298	-	3.298	-	3.298
	Walton	-	0.036	-	-	-	0.080	0.115	-	0.115
	Region II Total	0.433	1.162	-	-	3.403	0.080	5.078	-	5.078
III	Bay ⁽²⁾	0.017	0.554	-	-	-	-	0.571	22.734	23.305
	Region III Total	0.017	0.554	-	-	-	-	0.571	22.734	23.305
IV	Calhoun	-	0.240	-	-	-	-	0.240	-	0.240
	Holmes	-	-	-	-	-	-	-	-	-
	Jackson	-	0.773	-	0.059	-	-	0.832	-	0.832
	Liberty	-	0.214	-	-	-	0.073	0.288	0.001	0.289
	Washington	-	0.283	-	-	-	-	0.283	-	0.283
	Region IV Total	-	1.511	-	0.059	-	0.073	1.643	0.001	1.645
V	Franklin	0.017	-	-	-	-	-	0.017	-	0.017
	Gulf	-	0.166	-	-	-	-	0.166	-	0.166
	Region V Total	0.017	0.166	-	-	-	-	0.183	-	0.183
VI	Gadsden	-	0.435	-	-	-	-	0.435	0.000	0.435
	Region VI Total	-	0.435	-	-	-	-	0.435	0.000	0.435
VII	Jefferson ^(NWF Only)	-	-	-	-	-	-	-	-	-
	Leon	-	0.084	-	-	-	-	0.084	-	0.084
	Wakulla	-	1.119	-	-	-	-	1.119	-	1.119
	Region VII Total	-	1.203	-	-	-	-	1.203	-	1.203
	TOTALS	0.468	5.031	-	0.059	36.217	0.256	42.030	23.316	65.347

(1) Where applicable, water use that is recirculated and returned to source is, for estimating purposes, not considered to be contributing to total estimated consumptive water use. Total estimated water use is adjusted accordingly.

(2) Surface water source is the Deer Point Lake Reservoir supplied by Bay County Board of County Commissioners. See Public Supply for more information.

6.1 Thermoelectric Power Generation Reported Water Use by Source (mgd)

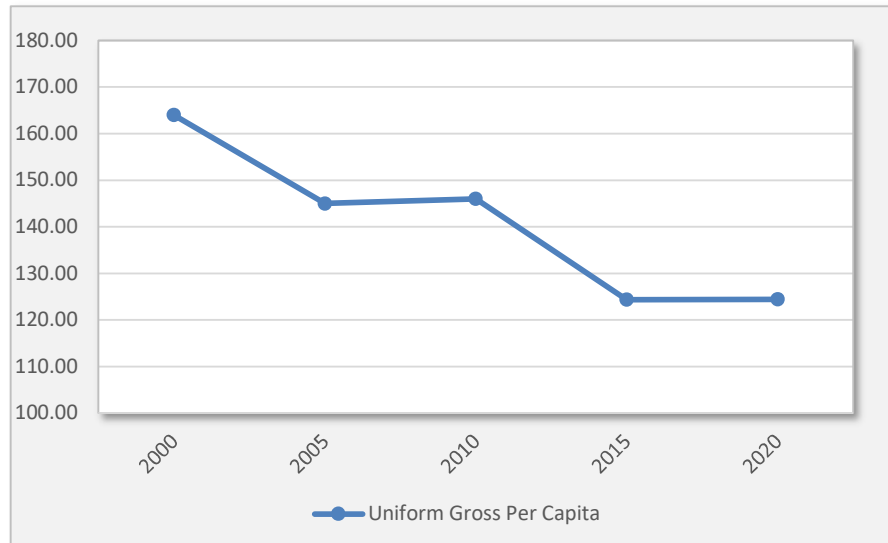
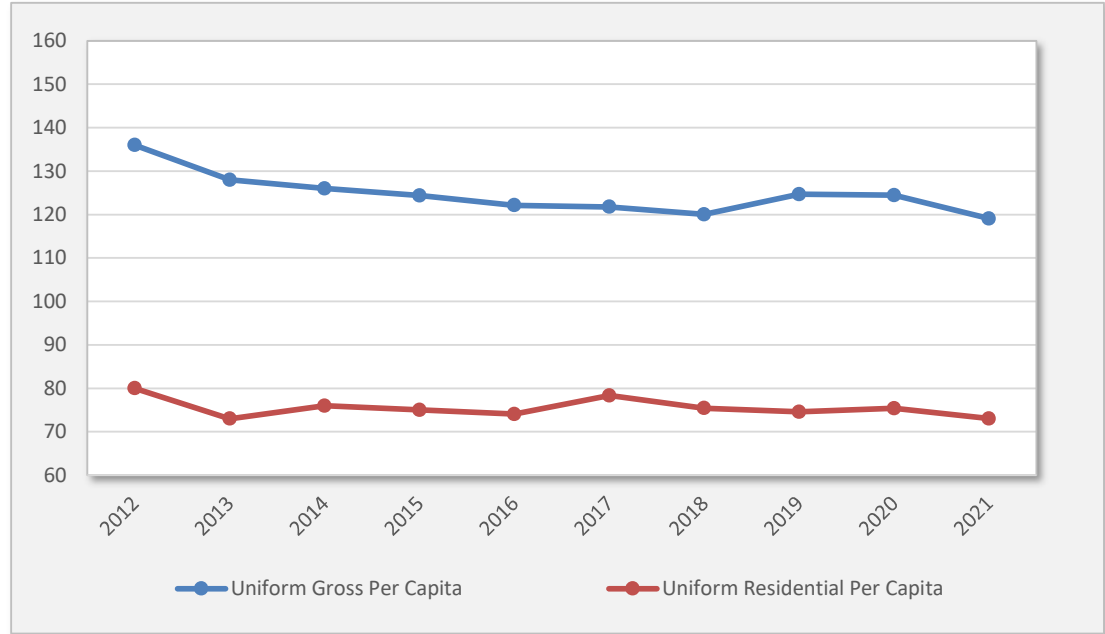
Planning Region	County / Region and Power Facility	Water Use by Groundwater Aquifer(s)						Total Groundwater	Total (Net Adjusted) Surface Water	TOTAL WATER USE ⁽¹⁾
		Coastal Floridan	Inland Floridan	Inter-mediate	Claiborne	Sand-and-Gravel	Surficial			
I	Escambia - Gulf / Crist	-	-	-	-	0.747	-	0.747	0.549	1.297
	Escambia - North Site	-	-	-	-	-	-	-	-	-
	Region I Total	-	-	-	-	0.747	-	0.747	0.549	1.297
II	Okaloosa	-	-	-	-	-	-	-	-	-
	Santa Rosa	-	-	-	-	-	-	-	-	-
	Walton	-	-	-	-	-	-	-	-	-
Region II Total	-	-	-	-	-	-	-	-	0.000	
III	Bay - BOCC Waste Energy	-	0.000	-	-	-	-	0.000	0.000	0.000
	Bay - Gulf / Lansing Smith	-	0.652	-	-	-	-	0.652	2.367	3.019
	Region III Total	-	0.652	-	-	-	-	0.652	2.367	3.019
IV	Calhoun	-	-	-	-	-	-	-	-	-
	Holmes	-	-	-	-	-	-	-	-	-
	Jackson - Gulf / Scholz	-	0.129	-	-	-	-	0.129	0.863	0.992
	Liberty - Telogia Power	-	0.206	-	-	-	-	0.206	-	0.206
	Washington	-	-	-	-	-	-	-	-	-
Region IV Total	-	0.334	-	-	-	-	0.334	0.863	1.197	
V	Franklin	-	-	-	-	-	-	-	-	-
	Gulf	-	-	-	-	-	-	-	-	-
Region V Total	-	-	-	-	-	-	-	-	0.000	
VI	Gadsden	-	-	-	-	-	-	-	-	-
	Region VI Total	-	-	-	-	-	-	-	-	0.000
VII	Jefferson ^(NWF Only)	-	-	-	-	-	-	-	-	-
	Leon - City of Tallahassee ⁽²⁾	-	2.500	-	-	-	-	2.500	-	2.500
	Wakulla - City of Tallahassee	-	-	-	-	-	-	-	0.207	0.207
Region VII Total	-	2.500	-	-	-	-	2.500	0.207	2.707	
TOTALS		-	3.486	-	-	0.747	-	4.234	3.987	8.220

(1) Water withdrawn from surface water sources is typically used for cooling and returned to the source, and is not considered or estimated as consumptive water use.

(2) Arvah B. Hopkins Generating Station, Florida DEP Site Certification #PA 74-03. Provisional amount for estimated use, which was 1.95 mgd in 2015. Water withdrawal projections provided by the City of Tallahassee in March 2017 are 4.93 mgd throughout twenty year planning horizon 2020-2040.

Public Supply Per Capita Water Use Over Time (gpcd)

Year	Uniform Gross Per Capita	Uniform Residential Per Capita
1995	151.00	
2000	164.00	
2005	145.00	
2010	146.00	
2011	140.00	
2012	136.00	80.00
2013	128.00	73.00
2014	126.00	76.00
2015	124.37	75.01
2016	122.14	74.08
2017	121.77	78.36
2018	120.03	75.44
2019	124.68	74.57
2020	124.43	75.40
2021	119.10	73.01



Five-Year Per Capita Averages, 2017-2021

Uniform Gross Per Capita (gpcd) 122.00

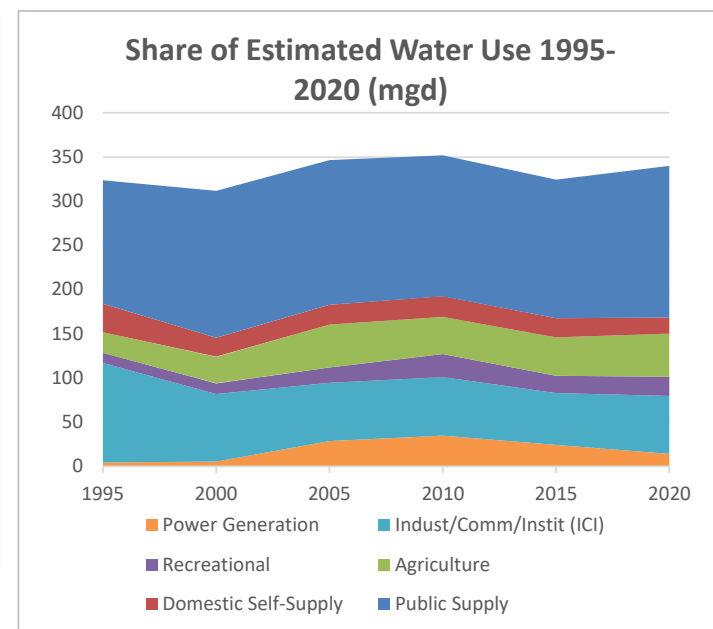
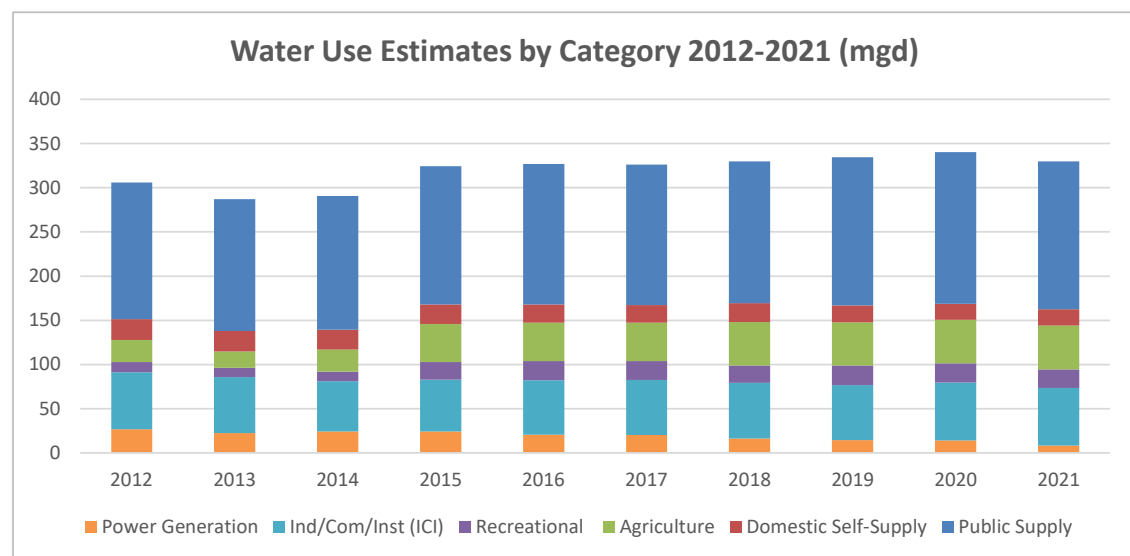
Uniform Residential Per Capita (gpcd) 75.36

NOTES. Public supply per capita rates, in gallons per capita per day (gpcd), are calculated from public supply water use data and estimates of populations served. The sources of per capita rates are district water supply assessments and, since 2012, annual water use reports. Also since 2015, populations served estimates include seasonal resident adjustments in all counties.

Trends in Share of and Total Water Use Estimates By Water Use Category (mgd)

Districtwide	1995	2000	2005	2010	2012	2013	2014	2015	2016	2017	2018	2019	2020	2021
Public Supply	139.790	166.160	163.481	159.570	154.270	149.088	151.549	156.495	159.084	158.717	160.323	167.565	171.597	167.365
Domestic Self-Supply	32.140	21.632	22.386	23.272	23.754	23.361	22.216	22.021	20.794	20.249	21.505	19.288	18.127	18.287
Agriculture	23.400	30.100	48.630	42.030	24.817	18.410	25.157	43.240	43.360	43.466	49.261	48.879	49.112	49.758
Recreational	11.500	12.060	17.310	25.905	11.777	10.698	10.846	19.595	21.594	21.032	19.521	21.902	21.643	20.858
Ind/Com/Inst (ICI)	112.450	76.280	66.160	66.440	64.411	63.238	56.664	58.703	61.581	62.448	63.058	62.409	65.691	65.347
Power Generation	4.470	5.650	28.530	34.820	26.708	22.373	24.357	24.335	20.676	20.206	16.095	14.360	14.068	8.220
Total Water Use	323.750	311.882	346.550	352.030	305.737	287.168	290.789	324.389	327.089	326.118	329.762	334.403	340.238	329.835

*2011 water use estimates not compiled at the time of this report.



NOTES:

1. Agriculture and recreational water use estimates vary over time. In some cases, they are the sum of reported water use plus additional estimating methods (for WSAs, and 2015-2021). In other years agriculture and recreational estimates appear to be from reported use only.

2. In 2010, the agriculture water use estimate of 42.03 mgd reflects the value after corrections made in Gadsden County agricultural water use. Therefore, both the agriculture and total water use estimates do not match the WSA 2010 report data (errata never issued).

3. Differences in water use categories over time may reflect moving permittees from one category to another, for example, an industrial use moved to power generation, or splitting a permittees major uses across two or more water use categories (e.g. a municipality that also serves a correctional facility).



Northwest Florida Water Management District
81 Water Management Drive
Havana, Florida 32333-4712

(850) 539-5999

www.nwfwater.com