

**SAND HILL LAKES MITIGATION BANK – PANORAMIC PHOTO POINTS (EACH PANE COVERS ~180°)**

P12 – 2024 (9/4/2024) [Approximate Location of P12; Exact Location Not Accessible Due to Large Tree Fall]



P12 – 2023 (9/26/2023) [Approximate Location of P12; Exact Location Not Accessible Due to Large Tree Fall]



P12 – 2022 (9/27/2022) [Approximate Location of P12; Exact Location Not Accessible Due to Large Tree Fall]



P12 – 2021 (9/9/2021) [Approximate Location of P12; Exact Location Not Accessible Due to Large Tree Fall]



P12 – 2020 (10/16/2020) [Approximate Location of P12; Exact Location Not Accessible Due to Large Tree Fall]



P12 – 2019 (9/5/2019) [Approximate Location of P12; Exact Location Not Accessible Due to Large Tree Fall]



P12 – 2018 (9/14/2018) [Approximate Location of P12; Exact Location Not Accessible Due to Large Tree Fall]



P12 – 2017 (10/19/2017) [Approximate Location of P12; Exact Location Not Accessible Due to Large Tree Fall]



P12 – 2016 (9/30/2016) [Approximate Location of P12; Exact Location Not Accessible Due to Large Tree Fall]



P12 – 2015 (9/23/2015) [Approximate Location of P12; Exact Location Not Accessible Due to Large Tree Fall]



P12 – 2014 (9/26/2014) [Approximate Location of P12; Exact Location Not Accessible Due to Large Tree Fall]



P12 – 2013 (9/5/2013)



P12 – 2012 (9/14/2012)



P12 – 2011 (10/13/2011)



P12 – 2010 (10/20/2010)



P12 – 2009 (10/26/2009)



P12 – 2008 (9/16/2008)



P12 – 2007 (11/02/2007)

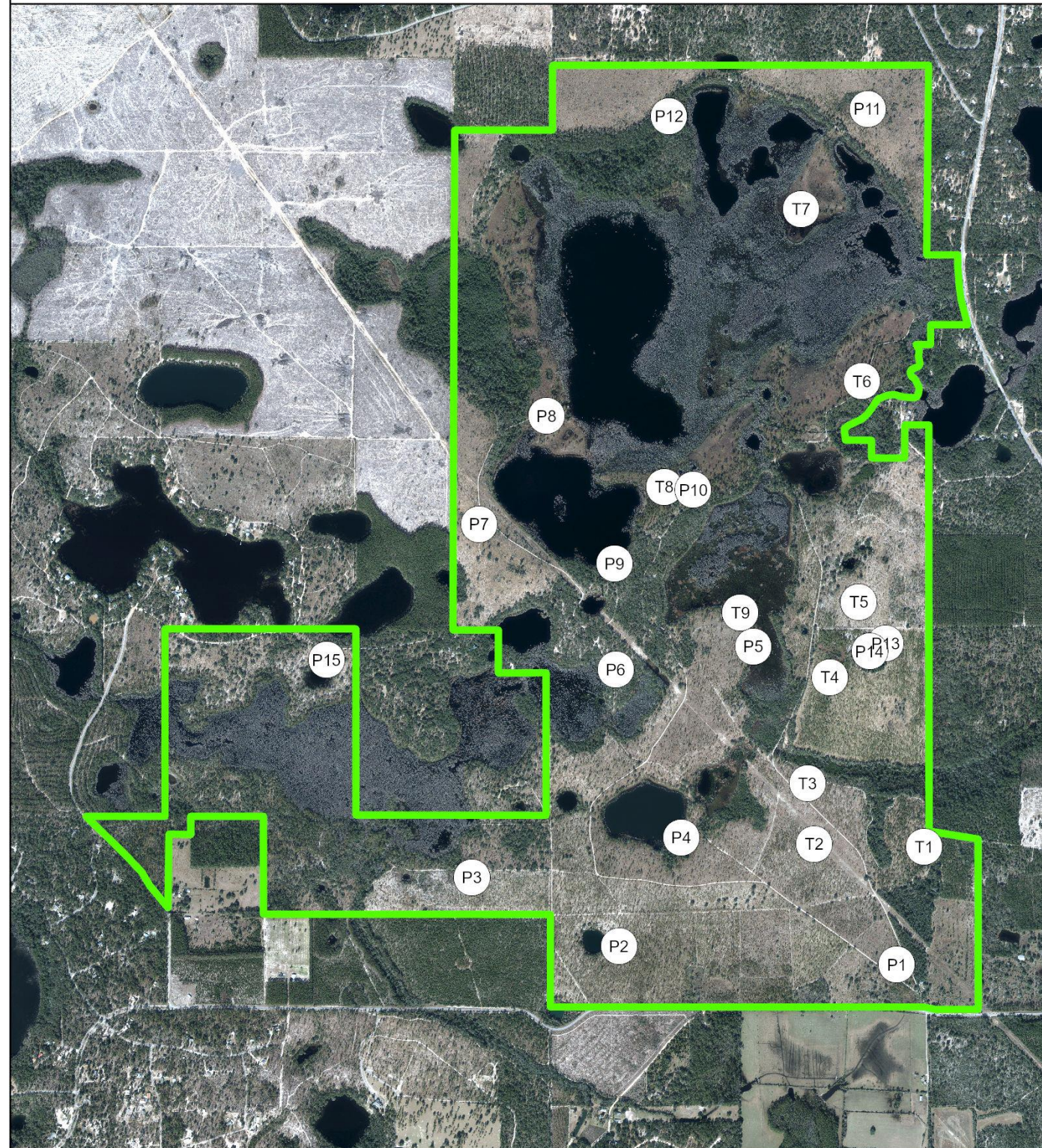


P12 – 2006 (10/20/2006)





Panoramic Photo Points



-  Sand Hill Lakes Mitigation Bank
-  Panoramic Photo Point

Sand Hill Lakes Mitigation Bank - Econfina Creek WMA  
Washington County, Florida (2022 DOQ)

