

**Tates Hell—Pine Log Creek Mitigation Area – Panoramic Photo Point No. 1 (2012 – 2024)**  
**(Each Frame Covers ~180°)**



Tates Hell (Pine Log Creek) Panoramic Photo Point 1 – 9/16/2024



Tates Hell (Pine Log Creek) Panoramic Photo Point 1 – 9/19/2023



Tates Hell (Pine Log Creek) Panoramic Photo Point 1 – 9/16/2022



Tates Hell (Pine Log Creek) Panoramic Photo Point 1 – 9/30/2021



Tates Hell (Pine Log Creek) Panoramic Photo Point 1 – 9/22/2020 (Approximate; Photo Taken ~250 FT North of Photo Point Due to Flooding)





Tates Hell (Pine Log Creek) Panoramic Photo Point 1 – 9/24/2019



Tates Hell (Pine Log Creek) Panoramic Photo Point 1 – 1/11/2019



Tates Hell (Pine Log Creek) Panoramic Photo Point 1 – 10/10/2017





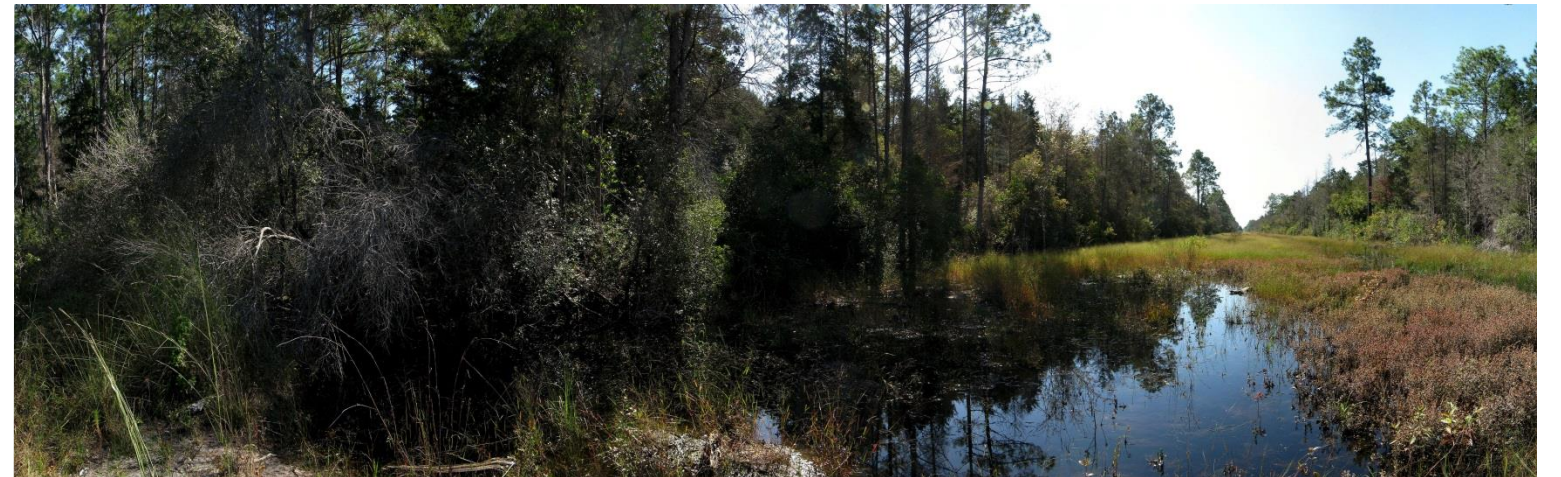
Tates Hell (Pine Log Creek) Panoramic Photo Point 1 – 9/16/2016



Tates Hell (Pine Log Creek) Panoramic Photo Point 1 – 9/25/2015



Tates Hell (Pine Log Creek) Panoramic Photo Point 1 – 10/9/2014





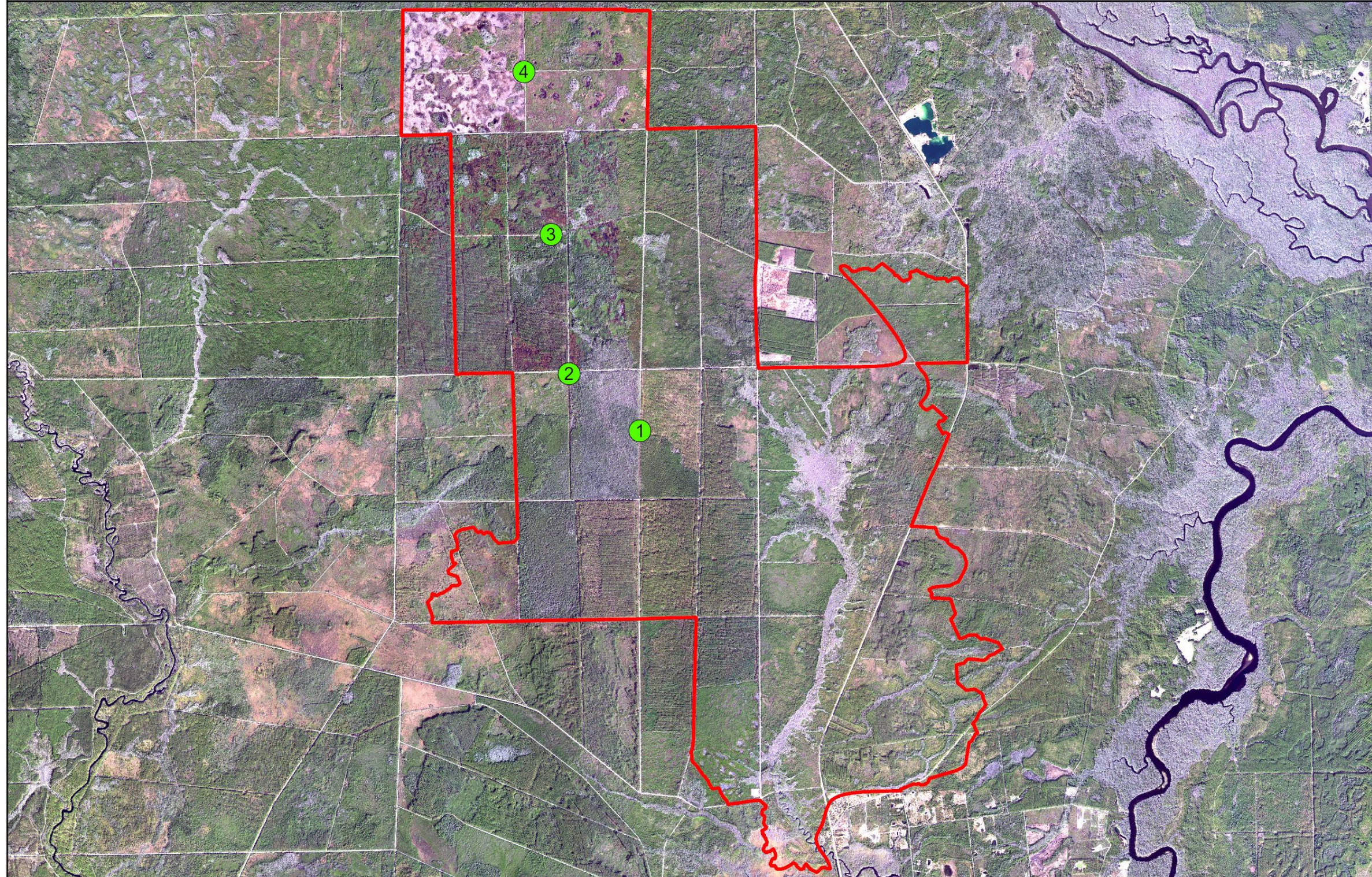
Tates Hell (Pine Log Creek) Panoramic Photo Point 1 – 9/17/2013





Tates Hell (Pine Log Creek) Panoramic Photo Point 1 – 9/12/2012



# Tates Hell (Pine Log Creek) - Panoramic Photo Points



-  Mitigation Site
-  Panoramic Photo Point

0 1 2 Miles

2022 DOQ

