

# NORTHWEST FLORIDA WATER MANAGEMENT DISTRICT



## In-Lieu Fee Mitigation Program

# 2018 Annual Report

31 March 2018

Permit: SAJ-2011-00287-TMF

Submitted to: Regulatory Division  
U.S. Army Corps of Engineers, Jacksonville District  
701 San Marco Blvd.  
Jacksonville, FL 32207-8175

Submitted by: Northwest Florida Water Management District (Sponsor)  
81 Water Management Drive  
Havana, FL 32333-4712  
850-539-5999

## **Sponsor Contact Information**

### **Northwest Florida Water Management District**

81 Water Management Dr.

Havana, FL 32333-4712

850-539-5999

**Paul Thorpe**, Chief, Bureau of Environmental & Resource Planning

[Paul.Thorpe@nfwwater.com](mailto:Paul.Thorpe@nfwwater.com)

**Robert Lide**, Environmental Scientist III

[Robert.Lide@nfwwater.com](mailto:Robert.Lide@nfwwater.com)

## Summary

The Northwest Florida Water Management District (NFWWMD) In-Lieu Fee (ILF) Mitigation Program is a subset and derivative of the Umbrella, Watershed-based, Regional Mitigation Plan (Umbrella Plan), an ILF-type wetlands mitigation program established by agreement between the US Army Corps of Engineers (USACE), Jacksonville District, and the NFWWMD in July 2006. To comply with the USACE / US Environmental Protection Agency 2008 Final Rule on compensatory mitigation (“Compensatory Mitigation for Losses of Aquatic Resources”; 33 CFR Parts 325 and 332; 40 CFR Part 230) seven mitigation projects originally established under the Umbrella Plan were incorporated into, and currently comprise, the NFWWMD ILF Program. The program Final Instrument was approved by the USACE on March 18, 2015; Permit SAJ-2011-00287-TMF. The primary intent of the NFWWMD ILF Program is to provide compensatory mitigation options to the Florida Department of Transportation (FDOT) for areas not presently served by private mitigation banks or where appropriate bank credits, as determined by the USACE, are not available. Mitigation to non-FDOT entities may be provided on a case-by-case basis with concurrence from FDOT.

This “2018 Annual Report” has been developed to comply with reporting requirements (financial, credit balances, assurances of long-term management funding) described in sections 7.3, 7.4, and 10.2 of the NFWWMD In-Lieu Fee Final Instrument (Final Instrument). Per these sections, an “annual program report,” an “annual report on financial assurances and long-term management funding,” and a “summary accounting statement” must be submitted to the USACE by March 31<sup>st</sup> of each year. The intent of this report is to provide an overview of the operation of the NFWWMD ILF Program for Calendar Year 2017 (1/1/2017 – 12/31/2017). Ecological monitoring reports for individual ILF sites used to determine if performance standards are being met or if adaptive management is necessary are site-specific, have varying reporting requirements, are submitted separately to the USACE, and are not included in this report.

The NFWWMD ILF Program is functioning as designed. It is financially sound and it is able to provide high levels of assurance that long-term management will be funded in perpetuity.

## Program Report

### Income received and interest earned

In 2017, the NFWWMD received \$67,245.00 from FDOT for the reservation and sale of mitigation credits from ILF Program projects. As allowed by the Final Instrument, these funds were deposited into a single, dedicated mitigation account (Fund “A”) used exclusively for ILF and non-ILF mitigation projects. Expenditures and revenues are tracked individually for each ILF project using Munis software (Tyler Technologies, Inc., a developer of financial software for public sector needs).

At the beginning of 2017, Fund “A” had a balance of \$16,303,451.10 held at Florida PRIME (Figure 1); the ending balance for 2017 was \$16,252,220.36 (Figure 2). Earned interest on Fund

“A” for 2017 was \$195,726.49. All earned interest (1.44% rate as of 12/31/2017) remains in Fund “A” and will be used to implement and maintain NFWFMD mitigation projects. Currently, \$4.5 million within Fund “A” is reserved for ILF projects; this figure may be adjusted annually, as necessary, to guarantee implementation and funding for perpetual management of all ILF projects.

#### A list of all permits for which NFWFMD ILF Program funds were accepted

In 2017, the NFWFMD ILF Program provided a total of 1.96 mitigation credits for wetland impacts authorized by one USACE permit (Figure 3; Table 1). A total of \$293,557 (\$226,312 received June 2016; \$67,245.00 received April 2017) was received for the 1.96 credits debited to comply with this USACE permit (Transaction No. 1, Table 1). Mitigation credits (Palustrine Forested) were provided from the Dutex ILF service area (Perdido River and Bay watershed). No other credit transactions occurred during Calendar Year 2017.

The USACE permit for which mitigation credits were provided in 2017 was associated with FDOT widening of US 90A (from CR 99 to SR 297). In accordance with the Final Instrument, the amount of funds received from FDOT for mitigation credits provided was governed by section 373.4137, Florida Statutes.

#### A description of NFWFMD ILF Program expenditures

From inception under the Umbrella Plan through 12/31/2017, a total of \$13,004,024.07 has been expended on the seven mitigation projects that comprise the ILF Program. Expenditures were for land acquisition, planning, construction, monitoring, maintenance, contingencies, adaptive management, administration and salaries. Non-ILF expenditures at Yellow River Ranch and Live Oak Peninsula are not included in this total.

In 2017, the NFWFMD expended \$210,536.75 on ILF projects (Table 2). This amount includes fall 2016 monitoring conducted at Lafayette Creek and Ward Creek West. Total 2017 ILF costs (including fall 2017 monitoring obligated for payment in 2018; not including funds obligated in 2016 and paid in 2017) were \$199,999.19. Land acquisition costs were \$0; planning costs were \$0; construction costs were \$0; fall 2017 monitoring costs were \$35,918.28 (\$24,272.84 paid in Calendar Year 2017; \$11,645.44 paid in Calendar Year 2018); maintenance costs were \$0; contingency costs were \$0; adaptive management costs were \$153,577.86; and administration costs were \$10,503.05. \$12,000 was obligated for restoration activities to be implemented at Ward Creek West in early 2018.

The program expenditure categories used in this report (i.e., land acquisition, planning, construction, monitoring, maintenance, contingencies, adaptive management, administration) were derived from language in the USACE / US Environmental Protection Agency 2008 Final Rule and incorporated into the NFWFMD In-Lieu Fee Final Instrument. For the purposes of this report, maintenance costs are defined as those expenditures that would be associated with long-term management (not including monitoring) after site release by the USACE. Because no sites

have been released, maintenance costs are \$0. Contingency costs, when applicable, would be associated with unanticipated expenditures associated with catastrophic events (e.g., unscheduled repair or replacement of a low-water-crossing after an extreme flood event). To date, there have been no contingency costs. Adaptive management costs are tied to ongoing restoration/mitigation activities prior to formal site release by the USACE. Some examples of adaptive management include removal of offsite pine, mechanical shrub reduction, herbicide treatment of exotic vegetation, planting of appropriate species, prescribed fire, control of nuisance animals such as feral hog and beaver, site access control such as gating, and hydrologic enhancements (e.g., low-water-crossings, ditch plugs, culverts, breaching of dykes, road removal, and beaver dam removal).

### Credit reporting

The ILF Program was approved in 2015 with an initial balance of 195.98 credits. At the beginning of 2017, the balance of available credits was 162.98; at the end of 2017 the balance was 161.02 credits (1.96 credits debited in 2017). No credits were released in 2017. No advance credits exist for any ILF project; no future advance credits are anticipated for any ILF project. The 1.96 credits debited in 2017 were classified as Palustrine Forested wetlands.

As of 12/31/2017, the ILF Program, as a whole, had a balance of 161.02 credits available for immediate use:

- 6.00 Estuarine Emergent
- 12.60 Palustrine Emergent
- 0.31 Palustrine Scrub/Shrub
- 142.11 Palustrine Forested

### Long-term management funding

The NFWFMD ILF Program continues to have sufficient funds to implement mitigation and ensure long-term management in perpetuity (Table 4).

As described in the approved Final Instrument, the price per credit for credits provided to FDOT is governed by section 373.4137, Florida Statutes (price is adjusted annually based on the federal Consumer Price Index). The NFWFMD ILF Program does not provide mitigation credits to non-FDOT entities except under rare circumstance, and only then with concurrence from FDOT.<sup>1</sup> As stipulated by the Final Instrument, if credits are provided to a non-FDOT entity, the price per credit charged to a non-FDOT entity would be determined from Appendix B of the Final Instrument (updated annually and included in this report as Table 4).

---

<sup>1</sup> Since approval of the NFWFMD ILF Program, mitigation has been provided, with FDOT concurrence, to one non-FDOT entity (8/4/2015, CSX Transportation, Inc., 0.06 credit, Tates Hell – Pine Log Creek).

Annual 2017 summary accounting statement

In 2017, the NFWWMD ILF Program collected \$67,245.00 for reservation and sale of credits. No new ILF projects were created or proposed, and no existing ILF projects were expanded.

A total of \$210,348.41 was expended in 2017 for ILF projects. Fund "A" earned \$195,726.49 interest in 2017. \$12,000.00 was obligated in late 2017 for restoration work to occur in early 2018 at Ward Creek West. All earned interest remains in Fund "A" and will be used to implement and maintain NFWWMD mitigation projects. As of 12/31/2017, the fund had a balance of \$16,252,220.36. Currently, \$4.5 million within Fund "A" is reserved for ILF projects (this figure may be adjusted annually, as necessary, to guarantee implementation and funding for perpetual management of all ILF projects).

ILF credit ledger balances through 12/31/2017

(see Appendix A)



**State Board of Administration  
Local Government Surplus Funds Trust Fund  
Participant Statement**

**AGENCY ACCOUNT** [REDACTED]  
01/01/2017 - 01/31/2017

Page 1 of 1

NORTHWEST FL WATER MGMT DIST  
MITIGATION  
81 WATER MANAGEMENT DRIVE  
HAVANA, FL 32333

Participant Return 12/31/2017 : 1.44 %

Date	Transaction Type	Description	Amount	Balance
01/01/2017	BEGINNING BALANCE			16,303,451.10
01/31/2017	EARNED INCOME	INTEREST	13,748.25	16,317,199.35
01/31/2017	TRANSFER OUT	RAGINA FLENNIKEN	(246,957.23)	16,070,242.12
	Totals:		(233,208.98)	16,070,242.12

**Figure 1: Dedicated Mitigation Fund (Fund "A") Balance (1/1/2017)**



**State Board of Administration  
Local Government Surplus Funds Trust Fund  
Participant Statement**

**AGENCY ACCOUNT** [REDACTED]  
12/01/2017 - 12/31/2017

Page 1 of 1

NORTHWEST FL WATER MGMT DIST  
MITIGATION  
81 WATER MANAGEMENT DRIVE  
HAVANA, FL 32333

Participant Return 12/31/2017 : 1.44 %

Date	Transaction Type	Description	Amount	Balance
12/01/2017	BEGINNING BALANCE			16,232,364.45
12/31/2017	EARNED INCOME	INTEREST	19,855.91	16,252,220.36
	Totals:		19,855.91	16,252,220.36

**Figure 2: Dedicated Mitigation Fund (Fund "A") Balance (12/31/2017)**

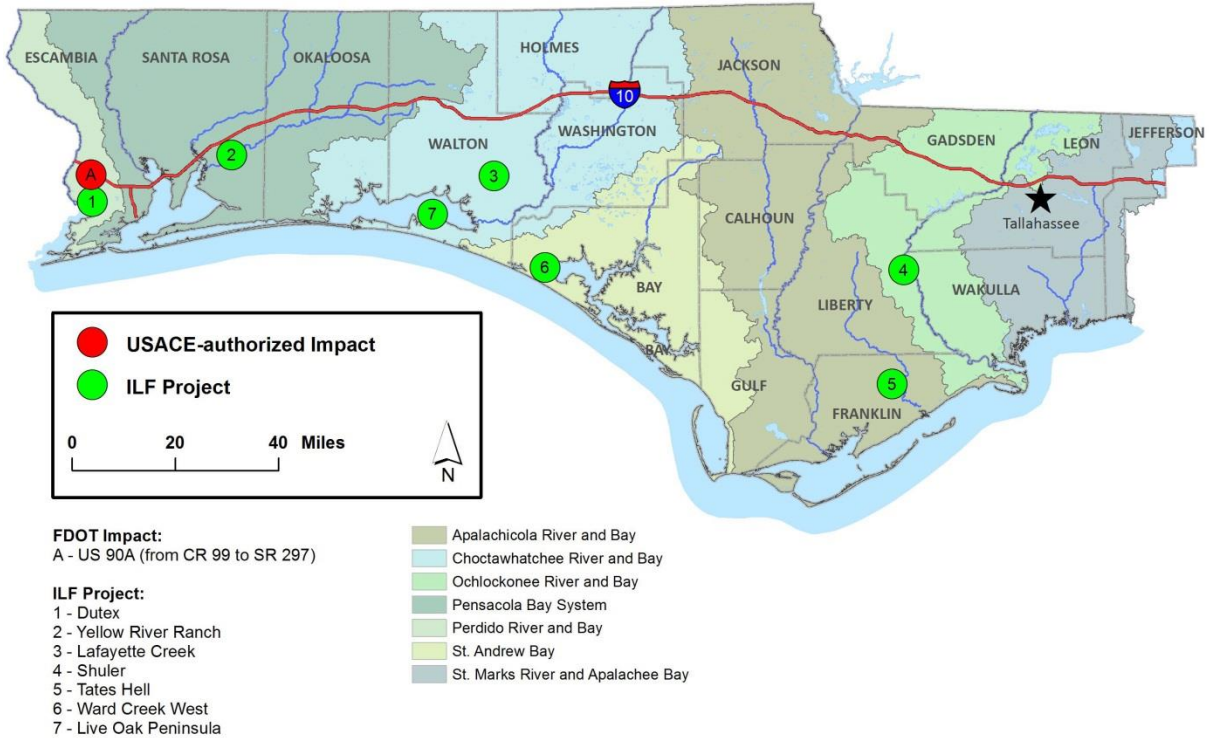


Figure 3: USACE-authorized Impacts Mitigated through NFWMD ILF Program (1/1/2016 - 12/31/2017)

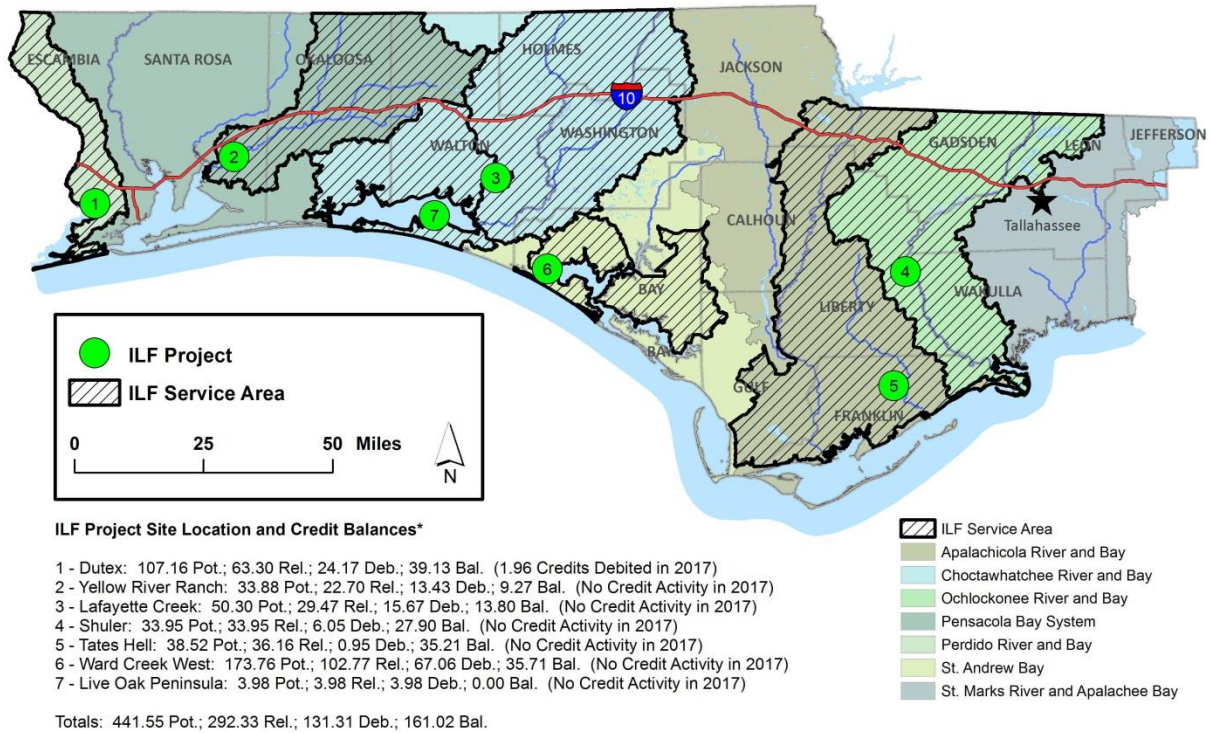


Figure 4: NFWMD ILF Credit Activity (1/1/2016 - 12/31/2017)



Table 1: Credit Transactions Occurring from 1/1/2017 through 12/31/2017

Transition No.	ILF Mitigation Project Service Area	USACE Permit			Impact Data per USACE Permit				State Permit		Impact Watershed	Mitigation Watershed	Amount Paid to NFWFMD <sup>a</sup>	Date Funds Received	Number of Mitigation Credits Debited at RIBITS	Classification of Mitigation Credits	Date Credits Debited at RIBITS	Notes
		USACE Permit #	Type / Permitter	Issuance Date	Impact Acreage	Functional Loss (UMAM)	Classification of Impact Wetland	Mitigation Credits Required by USACE Permit	State Permit #	Issuance Date								
1	Dulex	SAJ-2016-03316	RPG-RLT	1/22/2017	2.59	1.96	Palustrine	1.96	FDEP 0345798-003-EI/17	1/18/2017	Perdido River	Perdido River	\$293,557.00	June 2016; April 2017	1.96	Palustrine Forested	5/4/2017	FDOT mitigation for US 90A widening (from CR 99 to SR 297)
					2.59	1.96		1.96					\$293,557.00		1.96			

<sup>a</sup>Credit price for credits provided to FDOT, as described in the USACE-approved ILF Final Instrument, is governed by section 373.4137, Florida Statutes. A total of \$293,557 was received from FDOT for Transaction 1 in this table (\$226,312 received June 2016; \$67,245 received April 2017).

Table 2: NFWFMD ILF Program Expenditures (Calendar Year 2017)<sup>1</sup>

Mitigation Project	2017 Total Expenditures <sup>2</sup>	MUNIS Code	2017 Costs									2017 Funds Obligated <sup>6</sup>
			Land Acquisition	Planning	Construction	Monitoring <sup>3</sup>	Maintenance	Contingencies	Adaptive Management	Administration <sup>4</sup>	Total 2017 Costs <sup>5</sup>	
Dutex	\$98,653.06	61007	\$0.00	\$0.00	\$0.00	\$14,495.88	\$0.00	\$0.00	\$79,224.53	\$4,932.65	\$98,653.06	
Lafayette Creek	\$56,403.39	61010	\$0.00	\$0.00	\$0.00	\$6,150.00	\$0.00	\$0.00	\$41,525.22	\$2,820.17	\$50,495.39	\$6,150.00
Shuler	\$396.08	61033	\$0.00	\$0.00	\$0.00	\$396.08	\$0.00	\$0.00	\$0.00	\$0.00	\$396.08	
Tates Hell (Whiskey George Unit; Sumatra Unit; Pine Log Creek Unit)	\$79.58	61016	\$0.00	\$0.00	\$0.00	\$79.58	\$0.00	\$0.00	\$0.00	\$0.00	\$79.58	
Ward Creek West	\$44,375.78	61022	\$0.00	\$0.00	\$0.00	\$5,162.00	\$0.00	\$0.00	\$32,031.99	\$2,218.79	\$39,412.78	\$17,162.00
Live Oak Peninsula	\$0.00	61027	\$0.00	\$0.00	\$0.00	\$333.44	\$0.00	\$0.00	\$0.00	\$0.00	\$333.44	\$333.44
Yellow River Ranch	\$10,628.86	61009	\$0.00	\$0.00	\$0.00	\$9,301.30	\$0.00	\$0.00	\$796.12	\$531.44	\$10,628.86	
Totals:	\$210,536.75		\$0.00	\$0.00	\$0.00	\$35,918.28	\$0.00	\$0.00	\$153,577.86	\$10,503.05	\$199,999.19	\$23,645.44

## Notes:

<sup>1</sup>An Annual Program Report, due to the USACE by March 31<sup>st</sup> of each year, as described in detailed on page 15 of the ILF Final Instrument, requires a "description of NFWFMD ILF Program expenditures/disbursements from the mitigation account (i.e., land acquisition, planning, construction, monitoring, maintenance, contingencies, adaptive management, administration) for the program and by service area."

<sup>2</sup>This column ("2017 Total Expenditures") reports total disbursements of NFWFMD ILF Program funds for each project, by Calendar Year 2017 (1/1/2017 - 12/31/2017), as tracked by "MUNIS" software (Tyler Technologies, Inc.). Funds obligated in Calendar Year 2017 (e.g., Fall, 2017 monitoring) for payment in Calendar Year 2018 are not included in this column. Fall, 2016 monitoring costs for Lafayette Creek (\$5,908) and Ward Creek West (\$4,963) paid in Calendar Year 2017 are included in this column.

<sup>3</sup>Fall, 2017 monitoring costs totaled \$35,918.28 (\$24,272.84 paid in Calendar Year 2017; \$11,645.44 paid in Calendar Year 2018). \$6,150 obligated in 2017 and paid in 2018 for Lafayette Creek Fall, 2017 monitoring; \$333.44 obligated in 2017 and paid in 2018 for Live Oak Peninsula Fall, 2017 monitoring; \$5,162 obligated in 2017 and paid in 2018 for Ward Creek West Fall, 2017 monitoring.

<sup>4</sup>Monitoring efforts at Shuler, Tates Hell, and Live Oak Peninsula consisted of NFWFMD staff-time only; no program administration costs associated with these projects.

<sup>5</sup>Total program cost for Calendar Year 2017 (including 2017 monitoring paid in 2018; not including 2016 monitoring paid in 2017).

<sup>6</sup>In addition to \$11,645.44 obligated for Fall, 2017 monitoring of Lafayette Creek (\$6,150), Live Oak Peninsula (\$333.44) and Ward Creek West (\$5,162), \$12,000 was obligated for shrub reduction/adaptive management at Ward Creek West (to be implemented and paid in Calendar Year 2018).

Table 3: NWFWMDC ILF Program Credit Ledger Summary (Beginning and Ending Balances for 2017)

Mitigation Project	Watershed	Credit Assessment Method	Credit Type	Beginning Program Balances (1/1/2017)					Ending Program Balances (12/31/2017)					Explanation of Change
				Potential Credits	Advance Credits	Released Credits	Debited Credits	Balance	Potential Credits	Advance Credits	Released Credits	Debited Credits	Balance	
Dutex	Perdido River and Bay	UMAM	Estuarine Emergent	10.15	0	6.00	0.00	6.00	10.15	0	6.00	0.00	6.00	No Change
			Palustrine Emergent	7.58	0	4.48	0.00	4.48	7.58	0	4.48	0.00	4.48	No Change
			Palustrine Scrub/Shrub	0.52	0	0.31	0.00	0.31	0.52	0	0.31	0.00	0.31	No Change
			Palustrine Forested	88.90	0	52.51	22.21	30.30	88.90	0	52.51	24.17	28.34	FDOT (US 90A from CR 99 to SR 297; 5/4/2017; 1.96 Credits)
Yellow River Ranch	Yellow River	UMAM	Palustrine Emergent	11.89	0	7.96	7.96	0.00	11.89	0	7.96	7.96	0.00	No Change
			Palustrine Forested	21.99	0	14.74	5.47	9.27	21.99	0	14.74	5.47	9.27	No Change
Lafayette Creek	Choctawhatchee River and Bay	UMAM	Palustrine Forested	50.30	0	29.47	15.67	13.80	50.30	0	29.47	15.67	13.80	No Change
Tates Hell (Pine Log Creek Unit)	Apalachicola River	UMAM	Palustrine Emergent	8.12	0	8.12	0.00	8.12	8.12	0	8.12	0.00	8.12	No Change
			Palustrine Forested	8.56	0	8.56	0.06	8.50	8.56	0	8.56	0.06	8.50	No Change
Tates Hell (Sumatra Unit)	Apalachicola River	UMAM	Palustrine Forested	11.85	0	10.57	0.89	9.68	11.85	0	10.57	0.89	9.68	No Change
Tates Hell (Whiskey George Unit)	Apalachicola River	UMAM	Palustrine Forested	9.99	0	8.91	0.00	8.91	9.99	0	8.91	0.00	8.91	No Change
Shuler	Ochlockonee River	UMAM	Palustrine Forested	33.95	0	33.95	6.05	27.90	33.95	0	33.95	6.05	27.90	No Change
Ward Creek West	St. Andrew Bay	WRAP	Palustrine Forested	173.76	0	102.77	67.06	35.71	173.76	0	102.77	67.06	35.71	No Change
Live Oak Peninsula (Woolley Unit)	Choctawhatchee Bay	UMAM	Estuarine Emergent	1.32	0	1.32	1.32	0.00	1.32	0	1.32	1.32	0.00	No Change
Live Oak Peninsula (Lee Unit)	Choctawhatchee Bay	UMAM	Palustrine Forested	2.66	0	2.66	2.66	0.00	2.66	0	2.66	2.66	0.00	No Change
All ILF Projects Combined		UMAM or WRAP	Estuarine Emergent	11.47	0	7.32	1.32	6.00	11.47	0	7.32	1.32	6.00	
			Palustrine Emergent	27.59	0	20.56	7.96	12.60	27.59	0	20.56	7.96	12.60	
			Palustrine Scrub/Shrub	0.52	0	0.31	0.00	0.31	0.52	0	0.31	0.00	0.31	
			Palustrine Forested	401.96	0	264.14	120.07	144.07	401.96	0	264.14	122.03	142.11	
All Totals				441.54	0	292.33	129.35	162.98	441.54	0	292.33	131.31	161.02	

Table 4: NFWFMD ILF Program Cost Accounting Spreadsheet (Calendar Year 2017)

A	B	C	D	E	F	G	H	I	J	K	L	M	N	O	P	Q	R	S	T	U	V	W	X	Y	Z	AA
				[E=C-D]	[F=B-C]			[I=G+H]				[M=J+K+L]	[N=H+M]	[O=NB]				[U=Q-R]		[U=T*(E+F)]	[V=S+U]	[W=V-N]	[X=J+W]	[Y=X*Y\$5]		[AA=(N+Z)/B]
PROJECT	CREDITS (12/31/2017)					EXPENDITURES								LONG TERM MANAGEMENT	REVENUES					END BALANCE	MANAGEMENT AFTER FINAL CREDIT SALE		ESTIMATED PRICE PER CREDIT FOR NON-FDOT ENTITIES			
PROJECT	POTENTIAL (TOTAL)	RELEASED	DEBITED	BALANCE	POTENTIAL (REMAINING)	RESTORATION COSTS		INITIAL SET ASIDE FUNDS FOR LTM&M, CAPITAL REPLACEMENT, AND CONTINGENCIES			TOTAL COST THRU 2020	LTM&M ANNUAL COSTS	LTD REVENUES			FY 17/18 FDOT PER ACRE FUNDING	ESTIMATED VALUE OF UNSOLD CREDITS	TOTAL PROJECTED REVENUE		Rate of return (DEC 2017): 1.44%						
Mitigation project	Potential credits	Released credits	Debited credits	Balance of credits	Remaining potential credits	LTD expenditures through 2017	Projection of expenditures 2018 - 2020	Projection of total restoration costs (excluding set aside funds for LTM&M, capital replacement, and contingencies) for mitigation project from inception through 2020	Set aside fund for LTM&M	Set aside fund for capital replacement (LWCs, etc.)	Set aside fund for contingencies (e.g., catastrophic hurricane, flooding, or feral hog damage)	Total set aside fund	Projection of total costs (restoration expenditures plus set aside funds) from project inception through 2020	Projection of cost per credit to NFWFMD from inception through 2020 [FOR INFORMATION ONLY--THIS IS NOT AN ESTIMATE OF TOTAL COST PER CREDIT TO NFWFMD]	Projection of annual LTM&M expenditures after 2020 after all success criteria are met	LTD revenues through 2017	LTD revenue adjustment value (i.e., estimated non-ILF expenditures)	Adjusted LTD revenues through 2017 (adjusted for non-ILF mitigation expenditures)	Amount of FDOT funding per acre (not credit) of wetland impact as governed by FS 373.4137	Projected value of unsold credits (released and remaining potential) based on FDOT per-acre funding	Total projected revenue from inception of each mitigation project through achievement of all success criteria, based on FDOT per-acre funding	Projected revenue minus cost after achievement of all success criteria (based on FDOT per-acre funding)	Projected revised set aside fund for LTM&M (may be distributed between projects if needed)	Projected annual investment revenue for LTM&M	Minimum projected amount needed in set aside if interest alone pays for LTM&M	Price per credit including perpetual LTM&M (based on interest alone on set aside funds fully covering LTM&M for non-FDOT entities)
Dutex	107.16	63.30	24.17	39.13	43.86	\$3,264,727.52	\$225,000.00	\$3,489,727.52	\$340,000.00	\$100,000.00	\$100,000.00	\$540,000.00	\$4,029,727.52	\$37,604.77	\$12,000.00	\$1,691,199.02	\$200,000	\$1,491,199.02	\$115,131.00	\$9,554,721.69	\$11,045,920.71	\$7,016,193.19	\$7,356,193.19	\$105,929.18	\$833,333	\$45,381.31
Lafayette Creek	50.30	29.47	15.67	13.80	20.83	\$2,953,514.21	\$124,000.00	\$3,077,514.21	\$300,000.00	\$100,000.00	\$80,000.00	\$480,000.00	\$3,557,514.21	\$70,725.93	\$12,000.00	\$2,824,232.93	\$0	\$2,824,232.93	\$115,131.00	\$3,986,986.53	\$6,811,219.46	\$3,253,705.25	\$3,553,705.25	\$51,173.36	\$833,333	\$87,293.19
Shuler	33.95	33.95	6.05	27.90	0.00	\$2,157,406.35	\$4,603.92	\$2,162,010.27	\$300,000.00	\$0.00	\$50,000.00	\$350,000.00	\$2,512,010.27	\$73,991.47	\$400.00	\$382,595.19	\$0	\$382,595.19	\$115,131.00	\$3,212,154.90	\$3,594,750.09	\$1,082,739.82	\$1,382,739.82	\$19,911.45	\$27,778	\$74,809.66
Tates Hell	38.52	36.16	0.95	35.21	2.36	\$374,911.92	\$6,171.40	\$381,083.32	\$300,000.00	\$100,000.00	\$50,000.00	\$450,000.00	\$831,083.32	\$21,575.37	\$1,600.00	\$387,027.84	\$200,000	\$187,027.84	\$115,131.00	\$4,325,471.67	\$4,512,499.51	\$3,681,416.19	\$3,981,416.19	\$57,332.39	\$111,111	\$24,459.88
Ward Creek West	173.76	102.77	67.06	35.71	70.99	\$2,992,177.02	\$220,000.00	\$3,212,177.02	\$300,000.00	\$0.00	\$150,000.00	\$450,000.00	\$3,662,177.02	\$21,076.06	\$2,000.00	\$4,017,365.64	\$0	\$4,017,365.64	\$115,131.00	\$12,284,477.70	\$16,301,843.34	\$12,639,666.32	\$12,939,666.32	\$186,331.20	\$138,889	\$21,875.38
Live Oak Peninsula	3.98	3.98	3.98	0.00	0.00	\$381,736.52	\$1,397.28	\$383,133.80	\$300,000.00	\$0.00	\$0.00	\$300,000.00	\$683,133.80	\$171,641.66	\$400.00	\$1,675,038.05	\$0	\$1,675,038.05	\$115,131.00	\$0.00	\$1,675,038.05	\$991,904.25	\$1,291,904.25	\$18,603.42	\$27,778	\$178,621.00
Yellow River Ranch	33.88	22.70	13.43	9.27	11.18	\$879,550.53	\$827,335.56	\$1,706,886.09	\$300,000.00	\$50,000.00	\$80,000.00	\$430,000.00	\$2,136,886.09	\$63,072.20	\$6,000.00	\$3,365,117.19	\$975,000	\$2,390,117.19	\$115,131.00	\$2,354,428.95	\$4,744,546.14	\$2,607,660.05	\$2,907,660.05	\$41,870.30	\$416,667	\$75,370.51
Totals:	441.55	292.33	131.31	161.02	149.22	\$13,004,024.07	\$1,408,508.16	\$14,412,532.23	\$2,140,000.00	\$350,000.00	\$510,000.00	\$3,000,000.00	\$17,412,532.23		\$34,400.00	\$14,342,575.86	\$1,375,000	\$12,967,575.86		\$35,718,241.44	\$48,685,817.30	\$31,273,285.07	\$33,413,285.07	\$481,151.31	\$2,388,889	

Column Notes:

G - Actual LTD (Life to Date) project expenditures through 12/31/2017 (excludes non-ILF expenditures at Yellow River Ranch).

H - Projection of anticipated expenditures from 2018 - 2020 (all restoration activities are expected to be fully implemented at all ILF sites by or before 2020); Lafayette Creek ILF project and Creek West ILF project each increased by \$100,000.

I - Projection of total ILF project restoration costs (excluding funds set aside for LTM&M, capital replacements, and contingencies) through 2020.

J - Amount within "Fund A" (NFWFMD dedicated mitigation account) that is set aside for LTM&M. Guarantees of LTM&M for NFWFMD ILF sites include upfront allocation of mitigation funds in "Fund A," future credit sales, statutory mandates, NFWFMD policies, and the binding terms of the NFWFMD ILF Instrument. All revenues obtained from ILF credit sales will be deposited into this account, and interest earned on this account will remain in the account.

K - Amount within "Fund A" (NFWFMD dedicated mitigation account) that is set aside for future capital replacement costs (e.g., low-water-crossings refurbishments, culverts, access). May be used in future for LTM&M if capital replacements not needed.

L - Amount within "Fund A" (NFWFMD dedicated mitigation account) that is set aside for contingencies such as hurricane damage, flooding, or damage caused by feral hogs. May be used in future for LTM&M if contingency funds not needed.

M - Total amount within "Fund A" (NFWFMD dedicated mitigation account) that is set aside for long-term management, capital replacement costs, and contingency planning. [Column M = Columns J + K + L]

N - Projection of total ILF project costs through 2020 (includes projected restoration costs and funds set aside for LTM&M, capital replacement, and contingencies).

O - For information only and not to be confused with the total cost per credit to NFWFMD in perpetuity. Estimated cost per credit to NFWFMD through 2020 (including set aside funds for LTM&M, capital replacement, and contingencies, yet not including perpetual LTM&M).

P - Projected annual LTM&M costs after 2020 after all success criteria have been met.

Q, R & S - Life to Date (LTD) revenues adjusted for non-ILF expenditures.

T - FDOT per-acre funding for direct wetland impacts as governed by section 373.4137, FS. For Fiscal Year 2018, this amount is set at \$115,131 per acre of direct impact and must also cover the cost of mitigating any indirect or cumulative impacts (e.g., 1 acre of mitigation funding may result in >1 credit or <1 credit being provided to FDOT depending on permit conditions). The per-acre funding from FDOT is adjusted each year based on the federal Consumer Price Index. Mitigation funding from FDOT may be subject to legislative changes in future years.

U - Value of unsold credits if all credits were sold at the current FDOT per-acre funding amount. This is a hypothetical value in that it will be many years, if ever, before all remaining ILF credits are sold, the per-acre funding from FDOT is adjusted annually based on the federal Consumer Price Index, the number of credits required by USACE permits to offset impacted wetland acres will vary from project to project based on functional assessments, (e.g., 1 acre of mitigation funding may result in >1 credit or <1 credit being provided to FDOT depending on permit conditions), and funding from FDOT may be subject to legislative changes in future years.

V - Total revenue if all remaining credits were sold to FDOT at the current per-acre funding provided by section 373.4137, FS. This is a hypothetical value in that it will be many years, if ever, before all remaining ILF credits are sold, the per-acre funding from FDOT is adjusted annually based on the federal Consumer Price Index, the number of credits required by USACE permits to offset impacted wetland acres will vary from project to project based on functional assessments, (e.g., 1 acre of mitigation funding may result in >1 credit or <1 credit being provided to FDOT depending on permit conditions), and funding from FDOT may be subject to legislative changes in future years.

W - End balance of funds if all credits (currently available plus remaining potential) were sold to FDOT at \$115,131 per credit (i.e., the FY 2017 per-acre funding level). This is a hypothetical value in that it will be many years, if ever, before all remaining ILF credits are sold, the per-acre funding from FDOT is adjusted annually based on the federal Consumer Price Index, the number of credits required by USACE permits to offset impacted wetland acres will vary from project to project based on functional assessments, (e.g., 1 acre of mitigation funding may result in >1 credit or <1 credit being provided to FDOT depending on permit conditions), and funding from FDOT may be subject to legislative changes in future years. This hypothetical end balance is revised annually, and should not be considered a requirement of the NFWFMD ILF Program.

X - Projected revised set aside fund for LTM&M if all remaining credits were to be sold to FDOT at the current per-acre funding provided by section 373.4137, FS. Set aside funds may be distributed among projects if necessary to ensure full LTM&M funding. The value in Column X is a theoretical target that will be modified annually. It will be many years, if ever, before all remaining ILF credits are sold, the per-acre funding from FDOT is modified annually based on the federal Consumer Price Index, the number of credits required by USACE permits to offset impacted wetland acres will vary based on functional assessments, and mitigation funding from FDOT may be subject to legislative changes in future years. This target is not to be considered a requirement of the NFWFMD ILF Program.

Y - Projected annual interest return on the target set aside fund for LTM&M fund in Column X. All interest will remain in "Fund A" (NFWFMD dedicated mitigation fund). LTM&M will be funded by "Fund A."

Z - Amount needed in a LTM&M set aside if annual interest alone were to pay for LTM&M in perpetuity. This column is for information only and should be construed as a target, not a requirement. NFWFMD is committed to perpetual LTM&M of all ILF projects. Guarantees of LTM&M for NFWFMD ILF sites include upfront allocation of mitigation funds in "Fund A," future credit sales, statutory mandates, NFWFMD policies, and the binding terms of the NFWFMD ILF Instrument.

AA - Estimated Cost-per-Credit, per USACE guidance, when including the minimum set aside amount necessary (Column Z) to fully fund LTM&M in perpetuity through earned interest alone. Per the USACE, this is the per-credit-rate that would be charged any non-FDOT customers (mitigation provided to FDOT will be funded in accordance with section 373.4137, FS--the "Cost-per-Credit" in Column AA shall not apply to FDOT projects). The value in Column AA will be reviewed and revised as necessary, with USACE approval, on an annual basis.

\*Four million five hundred thousand dollars within "Fund A" is currently (3/1/2018) allocated for ILF projects, with the remainder being allocated for non-ILF mitigation. "Fund A" will be reallocated as necessary among ILF and non-ILF projects to ensure full implementation and long-term management of all ILF projects. As of 12/31/2017, \$16,252,220.36 was available in "Fund A" for NFWFMD mitigation projects.

Appendix A: ILF Credit Ledger through 12/31/2017

**NWFWMD In-Lieu Fee Mitigation Program (SAJ-2011-00287-TMF, 3/18/2015)**

In-Lieu Fee (ILF) Program Credit Summary (All ILF Projects and All Credit Types Combined)

A - Total Potential Credits (All Types) Approved by USACE = 441.55

B - Total Advance Credits (All Types) Approved by USACE = 0.00

C - Total Credits (All Types) Released by USACE = 292.33

D - Total Credits (All Types) Debited = 131.31

**Current ILF Credit Balance [B + C - D] = 161.02**

**In-Lieu Fee (ILF) Program Credit Summary by Credit Type**

**Estuarine Emergent (CCN 2) Credits**

Total Potential Estuarine Emergent (CCN 2) Credits Approved by USACE = 11.47

Total Estuarine Emergent (CCN 2) Credits Released by USACE = 7.32

Total Estuarine Emergent (CCN 2) Credits Debited = 1.32

Current ILF Estuarine Emergent (CCN 2) Credit Balance = **6.00**

**Palustrine Emergent (CCN 7) Credits**

Total Potential Palustrine Emergent (CCN 7) Credits Approved by USACE = 27.59

Total Palustrine Emergent (CCN 7) Credits Released by USACE = 20.56

Total Palustrine Emergent (CCN 7) Credits Debited = 7.96

Current ILF Palustrine Emergent (CCN 7) Credit Balance = **12.60**

**Palustrine Scrub/Shrub (CCN 8) Credits**

Total Potential Palustrine Scrub/Shrub (CCN 8) Credits Approved by USACE = 0.52

Total Palustrine Scrub/Shrub (CCN 8) Credits Released by USACE = 0.31

Total Palustrine Scrub/Shrub (CCN 8) Credits Debited = 0.00

Current ILF Palustrine Scrub/Shrub (CCN 8) Credit Balance = **0.31**

**Palustrine Forested (CCN 9) Credits**

Total Potential Palustrine Forested (CCN 9) Credits Approved by USACE = 401.96

Total Palustrine Forested (CCN 9) Credits Released by USACE = 264.14

Total Palustrine Forested (CCN 9) Credits Debited = 122.03

Current ILF Palustrine Forested (CCN 9) Credit Balance = **142.11**

## Dutex ILF Mitigation Area

Project Watershed: Perdido River & Bay

Credit Assessment Methodology: UMAM

Project Status: Ongoing (Project Initiated in 2009)

Dutex Mitigation Project Credit Summary (All Credit Types)	
Potential Credits Approved by USACE =	107.16
Credits Released by USACE =	63.30
Credits Debited =	24.17
<b>Current Dutex ILF Total Credit Balance [Released - Debited] =</b>	<b>39.13</b>

Dutex Mitigation Project Credit Summary (Estuarine Emergent, CCN 2)	
Potential Credits Approved by USACE =	10.15
Credits Released by USACE =	6.00
Credits Debited =	0.00
<b>Current Dutex ILF <u>Estuarine Emergent</u> Credit Balance [Released - Debited] =</b>	<b>6.00</b>

Dutex Mitigation Project Credit Summary (Palustrine Emergent, CCN 7)	
Potential Credits Approved by USACE =	7.58
Credits Released by USACE =	4.48
Credits Debited =	0.00
<b>Current Dutex ILF <u>Palustrine Emergent</u> Credit Balance [Released - Debited] =</b>	<b>4.48</b>

Dutex Mitigation Project Credit Summary (Palustrine Scrub/Shrub, CCN 8)	
Potential Credits Approved by USACE =	0.52
Credits Released by USACE =	0.31
Credits Debited =	0.00
<b>Current Dutex ILF <u>Palustrine Scrub/Shrub</u> Credit Balance [Released - Debited] =</b>	<b>0.31</b>



Dutex Mitigation Project Credit Summary (Palustrine Forested, CCN 9)

Potential Credits Approved by USACE =	88.90
Credits Released by USACE =	52.51
Credits Debited =	24.17
Current Dutex ILF <u>Palustrine Forested</u> Credit Balance [Released - Debited] =	28.34

**Dutex Estuarine Emergent (CCN 2) Credit Ledger**

<b>Trans- action Number</b>	<b>Permittee/Credit Recipient Name or CREDIT RELEASE</b>	<b>USACE Permit</b>	<b>Amount of Funds Received from Permittee</b>	<b>Date Funds Received from Permittee</b>	<b>Date of Ledger Modification</b>	<b>Credits Released (+)</b>	<b>Credits Debited (-)</b>	<b>Balance</b>
1	Credit Transactions under Umbrella Plan Agreement (i.e., prior to ILF Final Instrument)	-	-	-	-	6.00	0.00	6.00
2								6.00
3								6.00
4								6.00
5								6.00
6								6.00
7								6.00
8								6.00
9								6.00
10								6.00
11								6.00
12								6.00
<b>Dutex Estuarine Emergent (CCN 2) Totals:</b>						<b>6.00</b>	<b>0.00</b>	<b>6.00</b>

**Dutex Palustrine Emergent (CCN 7) Credit Ledger**

<b>Transaction Number</b>	<b>Permittee/Credit Recipient Name or CREDIT RELEASE</b>	<b>USACE Permit</b>	<b>Amount of Funds Received from Permittee</b>	<b>Date Funds Received from Permittee</b>	<b>Date of Ledger Modification</b>	<b>Credits Released (+)</b>	<b>Credits Debited (-)</b>	<b>Balance</b>
1	Credit Transactions under Umbrella Plan Agreement (i.e., prior to ILF Final Instrument)	-	-	-	-	4.48	0.00	4.48
2								4.48
3								4.48
4								4.48
5								4.48
6								4.48
7								4.48
8								4.48
9								4.48
10								4.48
11								4.48
12								4.48
<b>Dutex Palustrine Emergent (CCN 7) Totals:</b>						<b>4.48</b>	<b>0.00</b>	<b>4.48</b>

**Dutex Palustrine Scrub/Shrub (CCN 8) Credit Ledger**

<b>Transaction Number</b>	<b>Permittee/Credit Recipient Name or CREDIT RELEASE</b>	<b>USACE Permit</b>	<b>Amount of Funds Received from Permittee</b>	<b>Date Funds Received from Permittee</b>	<b>Date of Ledger Modification</b>	<b>Credits Released (+)</b>	<b>Credits Debited (-)</b>	<b>Balance</b>
1	Credit Transactions under Umbrella Plan Agreement (i.e., prior to ILF Final Instrument)	-	-	-	-	0.31	0.00	0.31
2								0.31
3								0.31
4								0.31
5								0.31
6								0.31
7								0.31
8								0.31
9								0.31
10								0.31
11								0.31
12								0.31
<b>Dutex Palustrine Scrub/Shrub (CCN 8) Totals:</b>						<b>0.31</b>	<b>0.00</b>	<b>0.31</b>

**Dutex Palustrine Forested (CCN 9) Credit Ledger**

<b>Transaction Number</b>	<b>Permittee/Credit Recipient Name or CREDIT RELEASE</b>	<b>USACE Permit</b>	<b>Amount of Funds Received from Permittee</b>	<b>Date Funds Received from Permittee</b>	<b>Date of Ledger Modification</b>	<b>Credits Released (+)</b>	<b>Credits Debited (-)</b>	<b>Balance</b>
1	Credit Transactions under Umbrella Plan Agreement (i.e., prior to ILF Final Instrument)	-	-	-	-	52.51	19.77	32.74
2	FDOT (CR 489 / Stefani Road at Unnamed Bridge near Pensacola)	SAJ-2013-00507 NW-AWP	\$53,729.00	June, 2013	6/23/2015	0.00	0.24	32.50
3	FDOT (US 29 from I-10 to US 90A)	SAJ-2014-02682 GP-MMW	\$214,914.00	June, 2013	10/8/2015	0.00	1.62	30.88
4	FDOT (Patricia Drive at Byaou Marcus Creek)	SAJ-2015-02000 NW-LEW	\$53,183.00	April, 2016	4/26/2016	0.00	0.58	30.30
5	FDOT (US 90A from CR 99 to SR 297)	SAJ-2016-03316 RGP-RLT	\$293,557.00	June, 2016; April, 2017	5/4/2017	0.00	1.96	28.34
6								28.34
7								28.34
8								28.34
9								28.34
10								28.34
11								28.34
12								28.34
<b>Dutex Palustrine Forested (CCN 9) Totals:</b>						<b>52.51</b>	<b>24.17</b>	<b>28.34</b>

## Yellow River Ranch Mitigation Area ILF Credit Ledger

Project Watershed: Yellow River

Credit Assessment Methodology: UMAM

Project Status: Ongoing (Project Initiated in 2005)

Yellow River Ranch Mitigation Project Credit Summary (All Credit Types)	
<u>Potential</u> Credits Approved by USACE =	33.88
Credits <u>Released</u> by USACE =	22.70
Credits <u>Debited</u> =	13.43
<b>Current Yellow River Ranch ILF Total Credit Balance [Released - Debited] =</b>	<b>9.27</b>

Yellow River Ranch Mitigation Project Credit Summary (Palustrine Emergent, CCN 7)	
<u>Potential</u> Credits Approved by USACE =	11.89
Credits <u>Released</u> by USACE =	7.96
Credits <u>Debited</u> =	7.96
<b>Current Yellow River Ranch ILF <u>Palustrine Emergent</u> Credit Balance [Released - Debited] =</b>	<b>0.00</b>

Yellow River Ranch Mitigation Project Credit Summary (Palustrine Forested, CCN 9)	
<u>Potential</u> Credits Approved by USACE =	21.99
Credits <u>Released</u> by USACE =	14.74
Credits <u>Debited</u> =	5.47
<b>Current Yellow River Ranch ILF <u>Palustrine Forested</u> Credit Balance [Released - Debited] =</b>	<b>9.27</b>

**Yellow River Ranch Palustrine Emergent (CCN 7) Credit Ledger**

<b>Transaction Number</b>	<b>Permittee/Credit Recipient Name or CREDIT RELEASE</b>	<b>USACE Permit</b>	<b>Amount of Funds Received from Permittee</b>	<b>Date Funds Received from Permittee</b>	<b>Date of Ledger Modification</b>	<b>Credits Released (+)</b>	<b>Credits Debited (-)</b>	<b>Balance</b>
1	Credit Transactions under Umbrella Plan Agreement (i.e., prior to ILF Final Instrument)	-	-	-	-	4.40	0.00	4.40
2	CREDIT RELEASE	-	-	-	12/16/2015	3.56	0.00	7.96
3	FDOT (SR 87 at Yellow River Bridge)	SAJ-2014-02879 GP-MMW	\$1,361,113.00	June, 2013	1/8/2016	0.00	7.96	0.00
4								0.00
5								0.00
6								0.00
7								0.00
8								0.00
9								0.00
10								0.00
11								0.00
12								0.00
<b>Yellow River Ranch Palustrine Emergent (CCN 7) Totals:</b>						<b>7.96</b>	<b>7.96</b>	<b>0.00</b>

**Yellow River Ranch Palustrine Forested (CCN 9) Credit Ledger**

<b>Transaction Number</b>	<b>Permittee/Credit Recipient Name or CREDIT RELEASE</b>	<b>USACE Permit</b>	<b>Amount of Funds Received from Permittee</b>	<b>Date Funds Received from Permittee</b>	<b>Date of Ledger Modification</b>	<b>Credits Released (+)</b>	<b>Credits Debited (-)</b>	<b>Balance</b>
1	Credit Transactions under Umbrella Plan Agreement (i.e., prior to ILF Final Instrument)	--	--	--	--	8.14	0.00	8.14
2	FDOT (US 90 Yellow River Bridge)	SAJ-2012-00501 SP-MMW	\$418,804.00	June, 2013	3/18/2015	0.00	2.40	5.74
3	CREDIT RELEASE	--	--	--	12/16/2015	6.60	0.00	12.34
4	FDOT (SR 87 at Yellow River Bridge)	SAJ-2014-02879 GP-MMW	(see amt. rec'd. for this permit under YRR Emergent credits)	June, 2013	1/8/2016	0.00	3.07	9.27
5								9.27
6								9.27
7								9.27
8								9.27
9								9.27
10								9.27
11								9.27
12								9.27
<b>Yellow River Ranch Palustrine Forested (CCN 9) Totals:</b>						<b>14.74</b>	<b>5.47</b>	<b>9.27</b>



## Lafayette Creek Mitigation Area ILF Credit Ledger

Project Watershed: Choctawhatchee River & Bay

Credit Assessment Methodology: UMAM

Project Status: Ongoing (Project Initiated in 2004)

Lafayette Creek Mitigation Project Credit Summary (Palustrine Forested, CCN 9)	
A - <u>Potential</u> Credits Approved by USACE =	50.30
C - Credits <u>Released</u> by USACE =	29.47
D - Credits <u>Debited</u> =	15.67
<b>Current Lafayette Creek ILF Credit Balance [B + C - D] =</b>	<b>13.80</b>

Lafayette Creek Palustrine Forested (CCN 9) Credit Ledger

Transaction Number	Permittee/Credit Recipient Name or CREDIT RELEASE	USACE Permit	Amount of Funds Received from Permittee	Date Funds Received from Permittee	Date of Ledger Modification	Credits Released (+)	Credits Debited (-)	Balance
1	Credit Transactions under Umbrella Plan Agreement (i.e., prior to ILF Final Instrument)	--	--	--	--	29.47	8.63	20.84
2	FDOT (SR 123 from SR 85 to north of Toms Creek)	SAJ-2013-00985 NW-AWP	\$73,071.00	June, 2013	6/5/2015	0.00	0.14	20.70
3	FDOT (SR 123 from north of Toms Creek to north of Turkey Creek)	SAJ-2013-01012 SP-AWP	\$257,897.00	June, 2013	6/23/2015	0.00	6.90	13.80
4								13.80
5								13.80
6								13.80
7								13.80
8								13.80
9								13.80
10								13.80
11								13.80
12								13.80
<b>Lafayette Creek Palustrine Forested (CCN 9) Totals:</b>						<b>29.47</b>	<b>15.67</b>	<b>13.80</b>

## Tates Hell Mitigation Area (Pine Log Creek Unit) ILF Credit Ledger

Project Watershed: Apalachicola River

Credit Assessment Methodology: UMAM

Project Status: Project Complete and in Long-term Management (Project Initiated in 2009)

Tates Hell (Pine Log Creek) Mitigation Project Credit Summary (All Credit Types)	
<u>Potential</u> Credits Approved by USACE =	16.68
Credits <u>Released</u> by USACE =	16.68
Credits <u>Debited</u> =	0.06
<b>Current Tates Hell (Pine Log Creek) ILF Total Credit Balance [Released - Debited] =</b>	<b>16.62</b>

Tates Hell (Pine Log Creek) Mitigation Project Credit Summary (Palustrine Emergent, CCN 7)	
<u>Potential</u> Credits Approved by USACE =	8.12
Credits <u>Released</u> by USACE =	8.12
Credits <u>Debited</u> =	0.00
<b>Current Tates Hell (Pine Log Creek) ILF <u>Palustrine Emergent</u> Credit Balance [Released - Debited] =</b>	<b>8.12</b>

Tates Hell (Pine Log Creek) Mitigation Project Credit Summary (Palustrine Forested, CCN 9)	
<u>Potential</u> Credits Approved by USACE =	8.56
Credits <u>Released</u> by USACE =	8.56
Credits <u>Debited</u> =	0.06
<b>Current Tates Hell (Pine Log Creek) ILF <u>Palustrine Forested</u> Credit Balance [Released - Debited] =</b>	<b>8.50</b>

**Tates Hell (Pine Log Creek) Palustrine Emergent (CCN 7) Credit Ledger**

<b>Transaction Number</b>	<b>Permittee/Credit Recipient Name or CREDIT RELEASE</b>	<b>USACE Permit</b>	<b>Amount of Funds Received from Permittee</b>	<b>Date Funds Received from Permittee</b>	<b>Date of Ledger Modification</b>	<b>Credits Released (+)</b>	<b>Credits Debited (-)</b>	<b>Balance</b>
1	Credit Transactions under Umbrella Plan Agreement (i.e., prior to ILF Final Instrument)	-	-	-	-	8.12	0.00	8.12
2								8.12
3								8.12
4								8.12
5								8.12
6								8.12
7								8.12
8								8.12
9								8.12
10								8.12
11								8.12
12								8.12
<b>Tates Hell (Pine Log Creek) Palustrine Emergent (CCN 7) Totals:</b>						<b>8.12</b>	<b>0.00</b>	<b>8.12</b>

**Tates Hell (Pine Log Creek) Palustrine Forested (CCN 9) Credit Ledger**

<b>Trans- action Number</b>	<b>Permittee/Credit Recipient Name or CREDIT RELEASE</b>	<b>USACE Permit</b>	<b>Amount of Funds Received from Permittee</b>	<b>Date Funds Received from Permittee</b>	<b>Date of Ledger Modification</b>	<b>Credits Released (+)</b>	<b>Credits Debited (-)</b>	<b>Balance</b>
1	Credit Transactions under Umbrella Plan Agreement (i.e., prior to ILF Final Instrument)	-	-	-	-	8.56	0.00	8.56
2	CSX Transportation, Inc (Chattahoochee)	SAJ-2011-01476 NW-LSL	\$2,515.67	8/3/2015	8/4/2015	0.00	0.06	8.50
3								8.50
4								8.50
5								8.50
6								8.50
7								8.50
8								8.50
9								8.50
10								8.50
11								8.50
12								8.50
<b>Tates Hell (Pine Log Creek) Palustrine Forested (CCN 9) Totals:</b>						<b>8.56</b>	<b>0.06</b>	<b>8.50</b>

## Tates Hell Mitigation Area (Sumatra Unit) ILF Credit Ledger

Project Watershed: Apalachicola River

Credit Assessment Methodology: UMAM

Project Status: Project Complete and in Long-term Management (Project Initiated in 2009)

Tates Hell (Sumatra Unit) Mitigation Project Credit Summary (Palustrine Forested, CCN 9)	
Potential Credits Approved by USACE =	11.85
Credits Released by USACE =	10.57
Credits Debited =	0.89
Current Tates Hell (Sumatra Unit) ILF <u>Palustrine Forested</u> Credit Balance [Released - Debited] =	9.68

**Tates Hell (Sumatra Unit) Palustrine Forested (CCN 9) Credit Ledger**

<b>Trans- action Number</b>	<b>Permittee/Credit Recipient Name or CREDIT RELEASE</b>	<b>USACE Permit</b>	<b>Amount of Funds Received from Permittee</b>	<b>Date Funds Received from Permittee</b>	<b>Date of Ledger Modification</b>	<b>Credits Released (+)</b>	<b>Credits Debited (-)</b>	<b>Balance</b>
1	Credit Transactions under Umbrella Plan Agreement (i.e., prior to ILF Final Instrument)	-	-	-	-	10.57	0.75	9.82
2	FDOT (SR 71 at SR 69 / Pear St. in Blountstown)	SAJ-2014-01305 NW-JML	\$15,600.00	5/26/2015	6/23/2015	0.00	0.14	9.68
3								9.68
4								9.68
5								9.68
6								9.68
7								9.68
8								9.68
9								9.68
10								9.68
11								9.68
12								9.68
<b>Tates Hell (Sumatra Unit) Palustrine Forested (CCN 9) Totals:</b>						<b>10.57</b>	<b>0.89</b>	<b>9.68</b>

## Tates Hell Mitigation Area (Whiskey George Unit) ILF Credit Ledger

Project Watershed: Apalachicola River

Credit Assessment Methodology: UMAM

Project Status: Project Complete and in Long-term Management (Project Initiated in 2009)

Tates Hell Mitigation Project (Whiskey George Unit) Palustrine Forested (CCN 9) Credit Summary	
Potential Credits Approved by USACE =	9.99
Credits Released by USACE =	8.91
Credits Debited =	0.00
Current Tates Hell (Whiskey George Unit) ILF Palustrine Forested Credit Balance [Released - Debited] =	8.91



**Tates Hell (Whiskey George Unit) Palustrine Forested (CCN 9) Credit Ledger**

<b>Transaction Number</b>	<b>Permittee/Credit Recipient Name or CREDIT RELEASE</b>	<b>USACE Permit</b>	<b>Amount of Funds Received from Permittee</b>	<b>Date Funds Received from Permittee</b>	<b>Date of Ledger Modification</b>	<b>Credits Released (+)</b>	<b>Credits Debited (-)</b>	<b>Balance</b>
1	Credit Transactions under Umbrella Plan Agreement (i.e., prior to ILF Final Instrument)	-	-	-	-	8.91	0.00	8.91
2								8.91
3								8.91
4								8.91
5								8.91
6								8.91
7								8.91
8								8.91
9								8.91
10								8.91
11								8.91
12								8.91
<b>Tates Hell (Whiskey George Unit) Palustrine Forested (CCN 9) Totals:</b>						<b>8.91</b>	<b>0.00</b>	<b>8.91</b>

## Shuler Mitigation Area ILF Credit Ledger

Project Watershed: Ochlockonee River

Credit Assessment Methodology: UMAM

Project Status: Project Complete and in Long-term Management (Project Initiated in 2008)

Shuler Mitigation Project Palustrine Forested (CCN 9) Credit Summary	
Potential Credits Approved by USACE =	33.95
Credits Released by USACE =	33.95
Credits Debited =	6.05
Current Shuler ILF Palustrine Forested Credit Balance [Released - Debited] =	27.90

**Shuler Palustrine Forested (CCN 9) Credit Ledger**

<b>Transaction Number</b>	<b>Permittee/Credit Recipient Name or CREDIT RELEASE</b>	<b>USACE Permit</b>	<b>Amount of Funds Received from Permittee</b>	<b>Date Funds Received from Permittee</b>	<b>Date of Ledger Modification</b>	<b>Credits Released (+)</b>	<b>Credits Debited (-)</b>	<b>Balance</b>
1	Credit Transactions under Umbrella Plan Agreement (i.e., prior to ILF Final Instrument)	-	-	-	-	33.95	6.05	27.90
2								27.90
3								27.90
4								27.90
5								27.90
6								27.90
7								27.90
8								27.90
9								27.90
10								27.90
11								27.90
12								27.90
<b>Shuler Palustrine Forested (CCN 9) Totals:</b>						<b>33.95</b>	<b>6.05</b>	<b>27.90</b>

## Ward Creek West Mitigation Area ILF Credit Ledger

Project Watershed: St. Andrew Bay

Credit Assessment Methodology: WRAP

Project Status: Ongoing (Project Initiated in 2008)

Ward Creek West Mitigation Project Credit Summary (Palustrine Forested, CCN 9)	
Potential Credits Approved by USACE =	173.76
Credits Released by USACE =	102.77
Credits Debited =	67.06
Current Ward Creek West ILF Palustrine Forested Credit Balance [Released - Debited] =	35.71

**Ward Creek West Palustrine Forested (CCN 9) Credit Ledger**

<b>Transaction Number</b>	<b>Permittee/Credit Recipient Name or CREDIT RELEASE</b>	<b>USACE Permit</b>	<b>Amount of Funds Received from Permittee</b>	<b>Date Funds Received from Permittee</b>	<b>Date of Ledger Modification</b>	<b>Credits Released (+)</b>	<b>Credits Debited (-)</b>	<b>Balance</b>
1	Credit Transactions under Umbrella Plan Agreement (i.e., prior to ILF Final Instrument)	-	-	-	-	102.77	44.68	58.09
2	FDOT (SR 79 from Steel Field Road to Bay/Washington County Line; administrative update for Condition #8 secondary impacts)	SAJ-2006-4624 IP-DEB	Pre-ILF Funding	March, 2006	3/7/2016	0.00	22.38	35.71
3								35.71
4								35.71
5								35.71
6								35.71
7								35.71
8								35.71
9								35.71
10								35.71
11								35.71
12								35.71
<b>Ward Creek West Palustrine Forested (CCN 9) Totals:</b>						<b>102.77</b>	<b>67.06</b>	<b>35.71</b>

## Live Oak Peninsula (Woolley Unit) Mitigation Area ILF Credit Ledger

Project Watershed: Choctawhatchee Bay

Credit Assessment Methodology: UMAM

Project Status: Project Complete and in Long-term Management (Initiated 2009)

Live Oak (Woolley Unit) Mitigation Project Credit Summary (Estuarine Emergent, CCN 2)	
Potential Credits Approved by USACE =	1.32
Credits Released by USACE =	1.32
Credits Debited =	1.32
Current Live Oak Peninsula (Woolley Unit) ILF <u>Estuarine Emergent</u> Credit Balance [Released - Debited] =	0.00

**Live Oak Peninsula (Woolley Unit) Estuarine Emergent (CCN 2) Credit Ledger**

<b>Transaction Number</b>	<b>Permittee/Credit Recipient Name or CREDIT RELEASE</b>	<b>USACE Permit</b>	<b>Amount of Funds Received from Permittee</b>	<b>Date Funds Received from Permittee</b>	<b>Date of Ledger Modification</b>	<b>Credits Released (+)</b>	<b>Credits Debited (-)</b>	<b>Balance</b>
1	Credit Transactions under Umbrella Plan Agreement (i.e., prior to ILF Final Instrument)	-	-	-	-	1.32	1.25	0.07
2	FDOT/Skanska USA Civil Southeast, Inc. (US 331 Choctawhatchee Bay Bridge)	SAJ-2013-02362	\$4,900.00	5/20/2014	6/23/2015	0.00	0.07	0.00
3								0.00
4								0.00
5								0.00
6								0.00
7								0.00
8								0.00
9								0.00
10								0.00
11								0.00
12								0.00
<b>Live Oak Peninsula (Woolley Unit) Estuarine Emergent (CCN 2) Totals:</b>						<b>1.32</b>	<b>1.32</b>	<b>0.00</b>

## Live Oak Peninsula (Lee Unit) Mitigation Area ILF Credit Ledger

Project Watershed: Choctawhatchee Bay

Credit Assessment Methodology: UMAM

Project Status: Project Complete and in Long-term Management (Initiated 2009)

Live Oak Peninsula (Lee Unit) Mitigation Project Credit Summary (Palustrine Forested, CCN 9)	
Potential Credits Approved by USACE =	2.66
Credits Released by USACE =	2.66
Credits Debited =	2.66
Current Live Oak Peninsula (Lee Unit) ILF Palustrine Forested Credit Balance [Released - Debited] =	0.00



**Live Oak Peninsula (Lee Unit) Palustrine Forested (CCN 9) Credit Ledger**

<b>Transaction Number</b>	<b>Permittee/Credit Recipient Name or CREDIT RELEASE</b>	<b>USACE Permit</b>	<b>Amount of Funds Received from Permittee</b>	<b>Date Funds Received from Permittee</b>	<b>Date of Ledger Modification</b>	<b>Credits Released (+)</b>	<b>Credits Debited (-)</b>	<b>Balance</b>
1	Credit Transactions under Umbrella Plan Agreement (i.e., prior to ILF Final Instrument)	-	-	-	-	2.66	2.66	0.00
2								0.00
3								0.00
4								0.00
5								0.00
6								0.00
7								0.00
8								0.00
9								0.00
10								0.00
11								0.00
12								0.00
<b>Live Oak Peninsula (Lee Unit) Palustrine Forested (CCN 9) Totals:</b>						<b>2.66</b>	<b>2.66</b>	<b>0.00</b>