

**Northwest Florida Water Management District  
Governing Board Meeting Minutes  
Thursday, January 9, 2025  
81 Water Management Drive  
Havana, Florida 32333**

1. Opening Ceremonies

Called to order at 1:00 p.m.

Savannah Shell called the roll and a quorum was declared present.

Present: George Roberts, Chair; Jerry Pate, Vice Chair; John Alter; Gus Andrews; Ted Everett; Kellie Ralston

Absent: Nick Patronis, Secretary-Treasurer; Anna Upton

2. Special Thanks and Recognition

None

3. Changes to the Agenda

None.

4. Consideration of the following Items Collectively by Consent:

MOTIONED BY JOHN ALTER, SECONDED BY JERRY PATE, THAT THE GOVERNING BOARD APPROVE ITEMS A, B, C, AND D IN THE CONSENT AGENDA CONTINGENT UPON LEGAL REVIEW AND OTHER ACTIONS AS REQUIRED BY FLORIDA STATUTES. NO PUBLIC COMMENT WAS GIVEN. MOTION CARRIED.

A. Approval of the Minutes for December 12, 2024

Approve the Minutes for December 12, 2024, Governing Board meeting.

B. Approval of the Financial Reports for the Month of November 2024

Approve the Financial Reports for the Month of November 2024.

C. Approval of Resolution No. 949 to the Florida Department of Environmental Protection for Acquisition of the Taylor Tract in the Chipola Springs Groundwater Contribution Area

Approve and adopt Resolution No. 949 to Florida Department of Environmental Protection for the Taylor acquisition in the Chipola Springs Groundwater Contribution Area.

D. Approval of Resolution No. 950 to the Florida Department of Environmental Protection for Acquisition of the Piplack Tract in the Wakulla/Spring Creek Spring Group Groundwater Contribution Area

Approve and adopt Resolution No. 950 to the Florida Department of Environmental Protection for the Piplack acquisition in the Wakulla/Spring Creek Spring Group Groundwater Contribution Area.

5. Consideration of Approval of the 2024 Region II Regional Water Supply Plan

MOTIONED BY JOHN ALTER, SECONDED BY KELLIE RALSTON, THAT THE GOVERNING BOARD APPROVE THE 2024 REGION II REGIONAL WATER SUPPLY PLAN FOR OKALOOSA, SANTA ROSA, AND WALTON COUNTIES AND ISSUE THE FINAL ORDER. NO PUBLIC COMMENT WAS GIVEN. MOTION CARRIED.

6. Consideration of Consultant Selections and Agreements for RFP 25-001: Groundwater Flow and Transport Modeling; Hydrogeological Data Collection; and Watershed Planning, Assessment and Program Administration

MOTIONED BY JOHN ALTER, SECONDED BY JERRY PATE, THAT THE GOVERNING BOARD APPROVE THE SELECTION COMMITTEES' RESULTS AND AUTHORIZE THE EXECUTIVE DIRECTOR TO EXECUTE AGREEMENTS WITH THE HIGHEST-RANKED FIRMS TO PROVIDE AS-NEEDED SERVICES IN EACH OF THE FOLLOWING CATEGORIES: (1) GROUNDWATER FLOW AND TRANSPORT MODELING, (2) HYDROGEOLOGICAL DATA COLLECTION AND EVALUATION, AND (3) WATERSHED PLANNING, ASSESSMENT AND PROGRAM ADMINISTRATION. NO PUBLIC COMMENT WAS GIVEN. MOTION CARRIED.

7. Consideration of ITB 25B-004 for 2025 Sand Pine and Hardwood Eradication Services

MOTIONED BY JOHN ALTER, SECONDED BY KELLIE RALSTON, THAT THE GOVERNING BOARD APPROVE THE LOWEST BID RECEIVED IN RESPONSE TO INVITATION TO BID 25B-004 FOR 2025 SAND PINE AND HARDWOOD ERADICATION SERVICES AND AUTHORIZE THE EXECUTIVE DIRECTOR TO EXECUTE AN AGREEMENT WITH SWEAT US, LLC IN AN AMOUNT UP TO \$105,379.70 TO FACILITATE THIS WORK, SUBJECT TO LEGAL COUNSEL REVIEW. NO PUBLIC COMMENT WAS GIVEN. MOTION CARRIED.

8. Public Hearing for Regulatory Matters

Called to order at 1:28 p.m.

A. Permit Renewal

A-1 Applicant: Monica Wallis, Destin Water Users, Inc.  
App. No.: 2B-091-5916-7  
Use: Landscape and Recreation

MOTIONED BY JOHN ALTER, SECONDED BY JERRY PATE, THAT THE GOVERNING BOARD APPROVE APPLICATION NO. 2B-091-5916-7, MONICA WALLIS, DESTIN WATER USERS, INC., PER THE RECOMMENDATIONS AND CONDITIONS OF THE STAFF REPORTS AND PER THE TERMS AND CONDITIONS OF THE PERMIT DOCUMENTS. NO PUBLIC COMMENT WAS GIVEN. MOTION CARRIED.

9. Legal Counsel Report

Breck Brannen provided a status update on the case referenced below.

William and Ashley Merryman v. St. Johns River Water Management District, et al., United States District Court for the Middle District of Florida (Jacksonville Division) Case No. 3:24-cv-00658-WWB-JBT

10. Executive Director Report

Meeting was adjourned at 1:36 p.m.

NORTHWEST FLORIDA WATER MANAGEMENT DISTRICT  
Financial Report  
Summary Statement of Receipts, Disbursements & Cash Balances  
For Month Ending December 31, 2024

Balance Forward - Operating Funds		\$35,945,340.45
Operating Funds Received in current month:		
Revenue Receipts, Current	\$ 2,425,031.32	
Contracts Receivable	582,800.25	
Other Deposits/Refunds/Adjustments	11,848.68	
Transfers from Lands Accounts	<u>0.00</u>	
Total Deposits during month		<u>3,019,680.25</u>
Total Deposits and Balance Forward		\$ 38,965,020.70
Disbursements:		
Employee Salaries	511,868.26	
Employee Benefits	470,670.16	
Employee Flexible Spending Account	0.00	
Contractual Services (Professional)	835,912.19	
Operating Expenses - Services	104,447.87	
Operating Expenses - Commodities	23,017.40	
Operating Capital Outlay	123,560.00	
Grants and Aids	<u>5,166,099.31</u>	
Total Operating Expenses during month		<u>7,235,575.19</u>
Payables, Prior Year	0.00	
Other Disbursements or (Credits)	<u>20,546.71</u>	
Total Funds Disbursed by check during month		<u>7,256,121.90</u>
Bank Debits (Fees, Deposit Slips, etc.)	0.00	
Transfer to Cypress Springs Account	<u>0.00</u>	
Total Funds Disbursed		<u>7,256,121.90</u>
Cash Balance Operating Funds at month end		\$ 31,708,898.80
Operating Depositories:		
Petty Cash Fund	250.25	
Bank of America:		
General Fund Checking	571,662.51	
Payroll Account	6,000.00	
Passthrough (EFT) Account	925.00	
Investment Accounts:		
Fla. Board of Administration @ 4.7%		
General Fund	10,821,205.13	
Lands Fee Fund	3,448,955.14	
Ecosystem TF	192.66	
Water Prot. & Sust. Program TF	292.45	
Okaloosa Regional Reuse	102,628.93	
Mitigation Fund	<u>16,756,786.73</u>	
Total Operating Depositories at month end		\$ 31,708,898.80

NORTHWEST FLORIDA WATER MANAGEMENT DISTRICT  
 Financial Report  
 Summary Statement of Receipts, Disbursements & Cash Balances  
 For Month Ending December 31, 2024

Land Acquisition Funds:

Fla. Board of Administration @ 4.7%	\$	293,457.70	
Total Land Acquisition Funds			293,457.70

Restricted Management Funds:

Fla. Board of Administration Phipps Land Management Account @ 4.7%		44,467.57	
Fla. Board of Administration Cypress Springs R&M Account @ 4.7%		879,519.49	
Total Restricted Land Management Funds			923,987.06

Total Land Acquisition, and Restricted Management Funds			1,217,444.76
--	--	--	--------------

TOTAL OPERATING, LAND ACQUISITION, & RESTRICTED FUNDS AT MONTH END			\$ 1,217,444.76
---	--	--	-----------------

Approved: \_\_\_\_\_  
 Chairman or Executive Director

Date: February 13, 2025



**Northwest Florida Water Management District  
Statement of Sources and Uses of Funds  
For the Period ending December 31, 2024  
(Unaudited)**

	<b>Current Budget</b>	<b>Actuals Through 12/31/2024</b>	<b>Variance (under)/Over Budget</b>	<b>Actuals As A % of Budget</b>
<b>Sources</b>				
Ad Valorem Property Taxes	\$ 4,025,000	\$ 2,595,182	\$ (1,429,818)	64%
Intergovernmental Revenues	102,271,467	-	(102,271,467)	0%
Interest on Invested Funds	96,250	416,705	320,455	433%
License and Permit Fees	655,000	119,570	(535,430)	18%
Other	1,159,363	113,416	(1,045,947)	10%
Fund Balance	28,816,044		(28,816,044)	0%
<b>Total Sources</b>	<b>\$ 137,023,124</b>	<b>\$ 3,244,873</b>	<b>\$ (133,778,251)</b>	<b>2%</b>

	<b>Current Budget</b>	<b>Expenditures</b>	<b>Encumbrances<sup>1</sup></b>	<b>Available Budget</b>	<b>%Expended</b>	<b>%Obligated<sup>2</sup></b>
<b>Uses</b>						
Water Resources Planning and Monitoring	\$ 9,228,582	\$ 1,101,223	\$ 1,480,943	\$ 6,646,416	12%	28%
Acquisition, Restoration and Public Works	85,847,047	209,944	9,760,879	75,876,224	0%	12%
Operation and Maintenance of Lands and Works	10,462,419	1,618,309	2,243,627	6,600,482	15%	37%
Regulation	4,816,851	859,309	293,369	3,664,173	18%	24%
Outreach	165,926	39,773	455	125,698	24%	24%
Management and Administration	3,149,707	582,760	66,231	2,500,716	19%	21%
<b>Total Uses</b>	<b>\$ 113,670,532</b>	<b>\$ 4,411,318</b>	<b>\$ 13,845,505</b>	<b>\$ 95,413,709</b>	<b>4%</b>	<b>16%</b>
Reserves	23,352,592			23,352,592	0%	0%
<b>Total Uses and Reserves</b>	<b>\$ 137,023,124</b>	<b>\$ 4,411,318</b>	<b>\$ 13,845,505</b>	<b>\$ 118,766,301</b>	<b>3%</b>	<b>13%</b>

<sup>1</sup> Encumbrances represent unexpended balances of open purchase orders.

<sup>2</sup> Represents the sum of expenditures and encumbrances as a percentage of the available budget.

This unaudited financial statement is prepared as of December 31, 2024, and covers the interim period since the most recent audited financial statements.

NORTHWEST FLORIDA WATER MANAGEMENT DISTRICT  
 SCHEDULE OF DISBURSEMENTS  
 GENERAL FUND  
 DECEMBER 2024

RETIREMENT	12/05/2024	\$	169,193.35
CHECKS	12/06/2024		330,261.37
ACH TRANSFER	12/06/2024		1,826,699.00
DIRECT DISBURSEMENTS	12/06/2024		80,573.59
CHECKS	12/13/2024		3,393,390.50
ACH TRANSFERS	12/13/2024		221,271.93
DIRECT DISBURSEMENTS	12/13/2024		3,815.00
CHECKS	12/20/2024		6,021.36
ACH TRANSFER	12/20/2024		573,815.43
VOIDED CHECKS	12/24/2024		-550.00
DIRECT DISBURSEMENT	12/20/2024		20,491.04
RETIREMENT	12/30/2024		105,085.70

	\$	6,730,068.27
--	----	--------------

---

Chairman or Executive Director

February 13, 2025

---

Date

**NORTHWEST FLORIDA WATER MANAGEMENT DISTRICT  
ACCOUNTS PAYABLE**

<b>VENDOR</b>	<b>NAME</b>	<b>CHECK DATE</b>	<b>INVOICE NET</b>	<b>INVOICE DESCRIPTION</b>
1616	BLUE CROSS/BLUE SHIELD OF FLORIDA	12/6/2024	728.92	BCBS MEDICARE
4676	CITY OF MILTON FLORIDA	12/6/2024	85.56	DUMPSTER SERVICE
4676	CITY OF MILTON FLORIDA	12/6/2024	56.34	SEWER MILTON OFFICE
2241	DEPT. OF THE INTERIOR - USGS	12/6/2024	2,131.00	JOINT FUNDING AGREEMENT-0048
4518	ENGINEERED COOLING SERVICES, INC.	12/6/2024	275.00	RUNNING PO FOR HVAC REPAIRS AT HQ
4518	ENGINEERED COOLING SERVICES, INC.	12/6/2024	215.00	RUNNING PO FOR HVAC REPAIRS AT HQ
916	FPL NORTHWEST FLORIDA	12/6/2024	482.92	DEFUNIAK ELECTRIC
5246	HOLLEY-NAVARRE WATER SYSTEM, INC.	12/6/2024	310,172.40	SOUTH SANTA ROSA REUSE PHASE I
5933	ROGERS BROTHERS LAND CLEARING LLC	12/6/2024	4,525.50	DISTRICT ROAD REPAIR SERVICES
4832	SUN LIFE FINANCIAL	12/6/2024	5,737.82	SUNLIFE ACCOUNT 4 DENTAL
4832	SUN LIFE FINANCIAL	12/6/2024	46.90	SUNLIFE ACCOUNT 5 PREPAID DENTAL
4834	SUN LIFE FINANCIAL	12/6/2024	81.60	EMPLOYEE ASSISTANCE PROGRAM
4834	SUN LIFE FINANCIAL	12/6/2024	1,050.56	SUNLIFE ACCOUNT 1 AD&D
4834	SUN LIFE FINANCIAL	12/6/2024	2,545.75	SUNLIFE ACCOUNT 2 VOL LIFE
4833	SUN LIFE FINANCIAL	12/6/2024	1,007.31	SUNLIFE ACCOUNT 3 VOL LTD
5250	SUN LIFE FINANCIAL - VISION	12/6/2024	591.14	SUNLIFE ACCOUNT 6 VISION
5700	JOSH TATUM	12/6/2024	110.00	TRAVEL REIMBURSEMENT
4626	WASTE PRO OF FLORIDA, INC	12/6/2024	199.10	SOLID WASTE HQ
4626	WASTE PRO OF FLORIDA, INC	12/6/2024	218.55	DUMPSTER FOR ECONFINA OFFICE AND CANOE LAUNCH
<b>TOTAL CHECKS</b>			<b>\$ 330,261.37</b>	
3293	ANGUS G. ANDREWS, JR.	12/6/2024	8,125.00	DFO LEASE AGREEMENT - CONTRACT PO
4845	CALHOUN COUNTY SHERIFF'S OFFICE	12/6/2024	1,179.64	LAW ENFORCEMENT/SECURITY SERVI
1617	CAPITAL HEALTH PLAN	12/6/2024	92,505.18	CHP MEDICAL
5687	COLLINS LAND SERVICES, INC.	12/6/2024	32,084.61	HURRICANE MICHAEL REPAIR
97	THE DEFUNIAK HERALD	12/6/2024	63.00	LEGAL AD - WATER USE PERMITS
5999	DOUBLE B TRUCKING LLC	12/6/2024	51,086.46	DISTRICT ROAD REPAIRS
5925	IAN WATERS	12/6/2024	146.00	TRAVEL REIMBURSEMENT
5235	JACKSON COUNTY BOARD OF COUNTY COMMISSIONERS	12/6/2024	1,636,319.21	ENCUMBER CONTRACT 17-061 BLUE SPRING RD SEWER PROJ
5802	MURPHY CASSIDY DIESEL REPAIRS	12/6/2024	157.60	MINOR REPAIRS FOR REG VEHICLES
3185	YAMILA POSEY	12/6/2024	110.00	TRAVEL REIMBURSEMENT
5947	PREVENTIA SECURITY LLC	12/6/2024	75.00	DEFUNIAK OFFICE FIRE/ALARM
1180	PRIDE ENTERPRISES	12/6/2024	1,059.30	LAKE VICTORIA OVERLOOK BENCHES
5060	XTREME LOGISTICS GULF COAST, LLC	12/6/2024	289.00	RENTAL & SERVICE FOR PORTABLE
5060	XTREME LOGISTICS GULF COAST, LLC	12/6/2024	190.00	RENTAL & SERVICE FOR PORTABLE
5060	XTREME LOGISTICS GULF COAST, LLC	12/6/2024	487.00	RENTAL & SERVICE FOR PORTABLE
5060	XTREME LOGISTICS GULF COAST, LLC	12/6/2024	289.00	RENTAL & SERVICE FOR PORTABLE
5060	XTREME LOGISTICS GULF COAST, LLC	12/6/2024	190.00	RENTAL & SERVICE FOR PORTABLE
5060	XTREME LOGISTICS GULF COAST, LLC	12/6/2024	479.00	RENTAL & SERVICE FOR PORTABLE
5060	XTREME LOGISTICS GULF COAST, LLC	12/6/2024	289.00	RENTAL & SERVICE FOR PORTABLE
5060	XTREME LOGISTICS GULF COAST, LLC	12/6/2024	380.00	RENTAL & SERVICE FOR PORTABLE

**NORTHWEST FLORIDA WATER MANAGEMENT DISTRICT  
ACCOUNTS PAYABLE**

<b>VENDOR</b>	<b>NAME</b>	<b>CHECK DATE</b>	<b>INVOICE NET</b>	<b>INVOICE DESCRIPTION</b>
5060	XTREME LOGISTICS GULF COAST, LLC	12/6/2024	190.00	RENTAL & SERVICE FOR PORTABLE
5060	XTREME LOGISTICS GULF COAST, LLC	12/6/2024	190.00	RENTAL & SERVICE FOR PORTABLE
5060	XTREME LOGISTICS GULF COAST, LLC	12/6/2024	390.00	RENTAL & SERVICE FOR PORTABLE
5060	XTREME LOGISTICS GULF COAST, LLC	12/6/2024	200.00	RENTAL & SERVICE FOR PORTABLE
5060	XTREME LOGISTICS GULF COAST, LLC	12/6/2024	225.00	RENTAL & SERVICE FOR PORTABLE
<b>TOTAL ACH DISBURSEMENTS</b>			<b>\$ 1,826,699.00</b>	
1616	BLUE CROSS/BLUE SHIELD OF FLORIDA	12/6/2024	1,022.02	BCBS RETIREE
1616	BLUE CROSS/BLUE SHIELD OF FLORIDA	12/6/2024	2,125.75	BCBS RETIREE
1616	BLUE CROSS/BLUE SHIELD OF FLORIDA	12/6/2024	77,425.82	BCBS MEDICAL
<b>TOTAL DIRECT DISBURSEMENTS</b>			<b>\$ 80,573.59</b>	
<b>TOTAL AP</b>			<b>\$ 2,237,533.96</b>	
5127	ALAN JAY FLEET SALES	12/13/2024	71,023.00	FY24-25 MITIGATION FORD F-350
5127	ALAN JAY FLEET SALES	12/13/2024	52,537.00	FY24-25 LANDS FORD F-150
6088	CAPITAL CITY SERVICES LLC	12/13/2024	8,065.00	SAFETY RAILINGS PROJECT-LK JACKSON FACILITY
4748	EAST MILTON WATER SYSTEM	12/13/2024	90.00	BACKFLOW TEST FOR MILTON OFFICE
4748	EAST MILTON WATER SYSTEM	12/13/2024	24.10	WATER MILTON OFFICE
5532	EASY CARE TREE SERVICE LLC	12/13/2024	1,500.00	HAZARDOUS TREE REMOVAL
916	FPL NORTHWEST FLORIDA	12/13/2024	158.44	MILTON ELECTRIC
391	GADSDEN COUNTY TAX COLLECTOR	12/13/2024	119.55	TAG/REGISTRATION FOR FY24-25 LANDS F-150
6096	GENESIS PROPERTIES & DEVELOPMENT LLC	12/13/2024	80.00	GENESIS PROPERTIES & DEVELOPMENT 289822-2 OVERPMT
6091	GREENTRUST ENVIRONMENTAL INC	12/13/2024	17,808.00	HERBICIDE OF VEGETATION-LK JACKSON FACILITY
3003	HAVANA FORD, INC.	12/13/2024	792.64	REPAIRS TO WMD-96370
5246	HOLLEY-NAVARRE WATER SYSTEM, INC.	12/13/2024	519,988.50	SOUTH SANTA ROSA REUSE PHASE I
5795	JACKSON COUNTY BOARD OF COUNTY COMMISSIONERS	12/13/2024	2,652,352.65	INDIAN SPRINGS SEWER PROJECT
698	KONICA MINOLTA BUSINESS SOLUTIONS USA	12/13/2024	171.47	KONICA MINOLTA COPIER LEASE R&M
698	KONICA MINOLTA BUSINESS SOLUTIONS USA	12/13/2024	179.80	KONICA MINOLTA COPIER LEASE R&M
698	KONICA MINOLTA BUSINESS SOLUTIONS USA	12/13/2024	304.74	KONICA MINOLTA COPIER LEASE R&M
698	KONICA MINOLTA BUSINESS SOLUTIONS USA	12/13/2024	96.13	KONICA MINOLTA COPIER LEASE R&M
698	KONICA MINOLTA BUSINESS SOLUTIONS USA	12/13/2024	5.34	KONICA MINOLTA COPIER LEASE R&M
698	KONICA MINOLTA BUSINESS SOLUTIONS USA	12/13/2024	102.84	KONICA MINOLTA COPIER LEASE R&M
698	KONICA MINOLTA BUSINESS SOLUTIONS USA	12/13/2024	97.45	KONICA MINOLTA COPIER LEASE R&M
698	KONICA MINOLTA BUSINESS SOLUTIONS USA	12/13/2024	157.48	KONICA MINOLTA COPIER LEASE R&M
698	KONICA MINOLTA BUSINESS SOLUTIONS USA	12/13/2024	184.89	KONICA MINOLTA COPIER LEASE R&M
698	KONICA MINOLTA BUSINESS SOLUTIONS USA	12/13/2024	132.11	KONICA MINOLTA COPIER LEASE R&M
698	KONICA MINOLTA BUSINESS SOLUTIONS USA	12/13/2024	151.84	KONICA MINOLTA COPIER LEASE R&M
6095	MIKE'S CUSTOM WELDING & FABRICATION, INC.	12/13/2024	550.00	TRACTOR TIRE RIM REPAIR

**NORTHWEST FLORIDA WATER MANAGEMENT DISTRICT  
ACCOUNTS PAYABLE**

<b>VENDOR</b>	<b>NAME</b>	<b>CHECK DATE</b>	<b>INVOICE NET</b>	<b>INVOICE DESCRIPTION</b>
5933	ROGERS BROTHERS LAND CLEARING LLC	12/13/2024	62,569.84	DISTRICT ROAD REPAIR SERVICES
5764	SOUTHERN CLEANING SUPPLY LLC	12/13/2024	123.80	PITT AND WILLIFORD RESTROOM SUPPLIES
110	TALQUIN ELECTRIC COOPERATIVE, INC.	12/13/2024	88.50	SECURITY LIGHTS HQ
110	TALQUIN ELECTRIC COOPERATIVE, INC.	12/13/2024	379.45	WATER/SEWER HQ
110	TALQUIN ELECTRIC COOPERATIVE, INC.	12/13/2024	2,867.20	ELECTRIC HQ
3568	THOMPSON TRACTOR CO., INC.	12/13/2024	688.74	WMD96276 REPAIR AND MAINTENANCE
<b>TOTAL CHECKS</b>			<b>\$ 3,393,390.50</b>	
45	DMS	12/13/2024	26.97	AIRCARDS AND HOTSPOTS
45	DMS	12/13/2024	3.69	CONFERENCE CALLS
45	DMS	12/13/2024	1,962.45	DEFUNIAK ETHERNET AND LONG DISTANCE
45	DMS	12/13/2024	623.63	DEFUNIAK LOCAL PHONE (WEST FL TELEPHONE SERVICE)
45	DMS	12/13/2024	1,493.08	HEADQUARTERS LOCAL (PANAMA CITY PHONE SVC)
45	DMS	12/13/2024	91.28	MILTON LOCAL (GULF BREEZE TELEPHONE SVC)
45	DMS	12/13/2024	9,855.51	HEADQUARTERS ETHERNET
4855	ENVIRON SERVICES INCORPORATED	12/13/2024	2,162.50	JANITORIAL SERVICES FOR HQ
3002	FLORIDA STATE UNIVERSITY	12/13/2024	47,266.55	ST JOSEPH BAYS ESTUARY PROGRAM
3942	A & W VENTURES, L.C.	12/13/2024	305.00	PORTABLE ADA TOILET FOR PHIPPS PARK
2268	INNOVATIVE OFFICE SOLUTIONS, INC	12/13/2024	837.00	PHONE SYSTEM MAINTANANCE CONTRACT 07-037
5368	KOUNTRY RENTAL NWF, INC.	12/13/2024	8,990.00	SERVICE FOR PORTABLE TOILETS-C
4952	LAW, REDD, CRONA & MUNROE, P.A.	12/13/2024	944.50	INSPECTOR GENERAL SERVICES AGREEMENT 18-051
4952	LAW, REDD, CRONA & MUNROE, P.A.	12/13/2024	6,697.50	INSPECTOR GENERAL SERVICES AGREEMENT 18-051
5791	MOHAWK VALLEY MATERIALS, INC.	12/13/2024	113,155.93	DISTRICT ROAD REPAIR SERVICES
3813	PENNINGTON, P.A.	12/13/2024	925.00	LEGAL COUNSEL
3482	SANTA ROSA COUNTY LANDFILL	12/13/2024	10.00	SOLID WASTE/LANDFILL SERVICES
4091	THE SHOE BOX	12/13/2024	123.24	SAFETY BOOTS - THOMAS
4955	TERRY'S HOME & LAWN MAINTENANCE, INC.	12/13/2024	4,481.90	RECREATION SITE CLEAN UP AND M
2808	THAT BOOT STORE	12/13/2024	200.00	SAFETY BOOTS FOR JUSTIN ALBRITTON
6086	TOTAL CLEANING OF NWFL LLC	12/13/2024	480.00	JANITORIAL SERVICES EFO
3696	URS CORPORATION	12/13/2024	6,665.00	RISK MAP PROJECT FOR APALACHICOLA
5218	WAGeworks, INC.	12/13/2024	100.00	COBRA ADMINISTRATION
2631	WASHINGTON COUNTY SHERIFF'S OFFICE	12/13/2024	13,871.20	LAW ENFORCEMENT/SECURITY ON DI
<b>TOTAL ACH DISBURSEMENTS</b>			<b>\$ 221,271.93</b>	
5944	REFUND NIC	12/13/2024	100.00	JIM MARTELLI 321005 EPERMIT DISCOUNT REFUND
5944	REFUND NIC	12/13/2024	250.00	NATHAN SAUNDERS 321008 WITHDRAWAL REFUND
5944	REFUND NIC	12/13/2024	595.00	BETH LEAPTROTT 320163 OVERPMT REFUND
5944	REFUND NIC	12/13/2024	1,250.00	JIM MARTELLI 317186-2 OVERPMT REFUND
5944	REFUND NIC	12/13/2024	100.00	LISA WILLIAMS 321251 WITHDRAWAL REFUND
5944	REFUND NIC	12/13/2024	1,150.00	EDWARD BASS 304947-2 OVERPMT REFUND

**NORTHWEST FLORIDA WATER MANAGEMENT DISTRICT  
ACCOUNTS PAYABLE**

<b>VENDOR</b>	<b>NAME</b>	<b>CHECK DATE</b>	<b>INVOICE NET</b>	<b>INVOICE DESCRIPTION</b>
5944	REFUND NIC	12/13/2024	20.00	REFUND WITHDRAWN WELL PERMITS 321414-1 & 321415-1
5944	REFUND NIC	12/13/2024	250.00	ALEXUS XIONG 321611 WITHDRAWAL REFUND
5944	REFUND NIC	12/13/2024	100.00	HUGH LUCAS 321754 (320608) EPERMIT DISCOUNT REFUND
<b>TOTAL DIRECT DISBURSEMENTS</b>			<b>\$ 3,815.00</b>	
<b>TOTAL AP</b>			<b>\$ 3,618,477.43</b>	
6094	BUMPER TO BUMPER AUTO PARTS	12/20/2024	621.74	PARTS FOR NEW HOLLAND TS100 SERVICE
391	GADSDEN COUNTY TAX COLLECTOR	12/20/2024	5.00	TEMP TAG FOR F-24-25 MITIGATION F-350
5577	HAMMOCK BAY BUILDING CO, LLC	12/20/2024	4,000.00	HAMMOCK BAY BUILDING 318862 OVERPMT REFUND
666	JEFFERSON COUNTY PROPERTY APPRAISER	12/20/2024	215.07	1ST QTR FY 24-25
5965	NIC SERVICES	12/20/2024	942.30	ONLINE PAYMENT CHARGES
1205	OFFICE DEPOT, INC.	12/20/2024	45.62	OFFICE SUPPLIES DFS ERP
423	OKALOOSA CO. TAX COLLECTOR	12/20/2024	11.68	PARCEL REFUND
5444	PENSACOLA SHOE HOSPITAL & BOOT STORE	12/20/2024	179.95	SAFETY BOOTS - T. BAILEY
<b>TOTAL CHECKS</b>			<b>\$ 6,021.36</b>	
325	BAY CO. PROPERTY APPRAISER	12/20/2024	2,100.49	1ST QTR FY 24-25
5450	CAITLIN BRONGEL	12/20/2024	316.05	TRAVEL REIMBURSEMENT
4845	CALHOUN COUNTY SHERIFF'S OFFICE	12/20/2024	1,516.68	LAW ENFORCEMENT/SECURITY SERVI
5951	D3 AIR AND SPACE OPERATIONS INC	12/20/2024	4,903.60	STAFF AUGMENTATION
3126	DEWBERRY ENGINEERS, INC	12/20/2024	30,000.00	CONTRACTUAL SERVICES FOR RISK
3126	DEWBERRY ENGINEERS, INC	12/20/2024	15,000.00	CONTRACTUAL SERVICES FOR RISK
3126	DEWBERRY ENGINEERS, INC	12/20/2024	250,000.00	CONTRACTUAL SERVICES FOR RISK
3126	DEWBERRY ENGINEERS, INC	12/20/2024	128,000.00	CONTRACTUAL SERVICES FOR RISK
5749	DUMPSTER SERVICES LLC	12/20/2024	550.00	30 YARD ROLL OFF DUMPSTER
2453	ESCAMBIA COUNTY PROPERTY APPRAISER	12/20/2024	3,186.12	2ND QTR FY 24-25
4807	WEX BANK	12/20/2024	1,137.15	WEX GPS TRACKING
4807	WEX BANK	12/20/2024	8,310.16	NOVEMBER 2024 FUEL/SERVICE CHARGES
2702	FISH AND WILDLIFE	12/20/2024	557.96	LAW ENFORCEMENT AND SECURITY O
2701	FLORIDA MUNICIPAL INSURANCE TRUST	12/20/2024	41,992.50	2ND INSTALLMENT FY 24-25
4961	PETER FOLLAND	12/20/2024	126.00	TRAVEL REIMBURSEMENT
4961	PETER FOLLAND	12/20/2024	146.00	TRAVEL REIMBURSEMENT
4961	PETER FOLLAND	12/20/2024	90.00	TRAVEL REIMBURSEMENT
4961	PETER FOLLAND	12/20/2024	146.00	TRAVEL REIMBURSEMENT
3337	FORESTECH CONSULTING	12/20/2024	400.00	LAND MANAGEMENT DATABASE
5791	MOHAWK VALLEY MATERIALS, INC.	12/20/2024	75,206.07	DISTRICT ROAD REPAIR SERVICES
4607	QUADIENT LEASING USA, INC	12/20/2024	1,087.65	MAILING SYSTEMS FOR HQ AND DEF
3482	SANTA ROSA COUNTY LANDFILL	12/20/2024	10.00	SOLID WASTE/LANDFILL SERVICES

**NORTHWEST FLORIDA WATER MANAGEMENT DISTRICT  
ACCOUNTS PAYABLE**

<b>VENDOR</b>	<b>NAME</b>	<b>CHECK DATE</b>	<b>INVOICE NET</b>	<b>INVOICE DESCRIPTION</b>
2434	JERRICK SAQUIBAL	12/20/2024	98.00	TRAVEL REIMBURSEMENT
5455	PAUL THURMAN	12/20/2024	135.00	TRAVEL REIMBURSEMENT
4968	WANTMAN GROUP, INC.	12/20/2024	8,800.00	PROFESSIONAL SURVEYING SERVICE
<b>TOTAL ACH DISBURSEMENTS</b>			<b>\$ 573,815.43</b>	
2967	BANK OF AMERICA	12/20/2024	50.00	SUNPASS
2967	BANK OF AMERICA	12/20/2024	24.99	TALLAHASSEE DEMOCRAT DIGITAL SUBSCRIPTION
2967	BANK OF AMERICA	12/20/2024	19.99	PENSACOLA NEWS JOURNAL DIGITAL SUBSCRIPTION
2967	BANK OF AMERICA	12/20/2024	246.48	AMAZON LAB/OFFICE SUPPLIES
2967	BANK OF AMERICA	12/20/2024	7,889.42	DELL MONITORS AND DOCKING STATIONS
2967	BANK OF AMERICA	12/20/2024	139.58	AMAZON - LAPTOP BATTERY
2967	BANK OF AMERICA	12/20/2024	187.36	REG OFFICE/FIELD SUPPLIES - AMAZON
2967	BANK OF AMERICA	12/20/2024	131.20	AMAZON -OFFICE AND OTHER SUPPL FOR FLEET AND LANDS
2967	BANK OF AMERICA	12/20/2024	179.95	SAFETY BOOTS - WAITS - AMAZON
2967	BANK OF AMERICA	12/20/2024	192.12	AMAZON - BOOT ORDER FOR BEN FAURE - LANDS
2967	BANK OF AMERICA	12/20/2024	119.52	AMAZON - COAKLEY - FL MATS AND ROBERT CALENDAR
2967	BANK OF AMERICA	12/20/2024	35.41	AMAZON OFFICE SUPPLIES
2967	BANK OF AMERICA	12/20/2024	159.52	2025 CALENDARS/PLANNERS - AMAZON
2967	BANK OF AMERICA	12/20/2024	9,225.50	NOVEMBER 2024 P-CARD CHARGES
5944	REFUND NIC	12/20/2024	100.00	RALPH RISH 319438 EPERMIT DISCOUNT OVERPMT REFUND
5944	REFUND NIC	12/20/2024	250.00	MATTHEW PARKER 305165-2 OVERPMT REFUND
5944	REFUND NIC	12/20/2024	70.00	JONATHAN GREEN 307514-2 OVERPMT REFUND
5944	REFUND NIC	12/20/2024	1,400.00	JAMES CROOK 321876 (321268) WITHDRAWAL REFUND
5944	REFUND NIC	12/20/2024	70.00	JIM MARTELLI 9458-3 (321005) OVERPMT REFUND
<b>TOTAL DIRECT DISBURSEMENTS</b>			<b>\$ 20,491.04</b>	
<b>TOTAL AP</b>			<b>\$ 600,327.83</b>	

NORTHWEST FLORIDA WATER MANAGEMENT DISTRICT  
 SCHEDULE OF DISBURSEMENTS  
 PAYROLL  
 DECEMBER 2024

DIRECT DEPOSIT	12/13/2024	\$	260,732.19
CHECKS	12/13/2024		385.66
FLEX SPENDING TRANSFER	12/13/2024		1,670.91
DIRECT DEPOSIT	12/27/2024		261,208.30
CHECKS	12/27/2024		385.66
FLEX SPENDING TRANSFER	12/27/2024		1,670.91
			526,053.63
			\$ 526,053.63

APPROVED:

\_\_\_\_\_  
 Chairman or Executive Director

February 13, 2025  
 \_\_\_\_\_  
 Date



**NORTHWEST FLORIDA WATER MANAGEMENT DISTRICT**

**MEMORANDUM**

TO: Governing Board

THROUGH: Lyle Seigler, Executive Director  
Andy Joslyn, Deputy Executive Director  
Caitlin Brongel, Chief of Staff

FROM: Savannah Shell, Executive Assistant

DATE: January 31, 2025

SUBJECT: Approval of Amendment No. 1 to the 2025 Governing Board Meeting Schedule

---

March 12, 2025

April 9, 2025

May 7, 2025

June 11, 2025 (Franklin County)

July 9, 2025

August 13, 2025

September 10, 2025 (4:00 p.m.)

September 24, 2025 (Final Budget Hearing, 5:05 p.m., Bay County)

October 8, 2025

November 12, 2025 (Walton County)

December 10, 2025

All meetings are scheduled to begin at 1:00 p.m., at District Headquarters, unless otherwise indicated.

**NORTHWEST FLORIDA WATER MANAGEMENT DISTRICT**

**MEMORANDUM**

TO: Governing Board

THROUGH: Lyle Seigler, Executive Director  
Andy Joslyn, Deputy Executive Director  
Caitlin Brongel, Chief of Staff

FROM: Danny Layfield, Director, Division of Asset Management

DATE: January 27, 2025

SUBJECT: Consideration of Fiscal Year 2024-2025 Delegation of Spending Authority for Heavy Equipment

---

**Recommendation**

Staff recommends the Governing Board approve and provide the Executive Director with spending authority in an amount not to exceed \$360,000 for heavy equipment purchases in FY 2024-2025.

- State of Florida and/or Florida Sheriff's Association contract for the purchase of heavy equipment: one (1) Caterpillar D3 LGP Tract Type Fire Bulldozer and attachments, not to exceed \$360,000.

**Background**

Each year, the District evaluates and identifies vehicles and heavy equipment needs. As part of that annual plan, the Asset Management Division (ASM) has identified one heavy equipment item for purchase, a CAT D3 Fire Bulldozer. This item is mission critical and will replace current heavy equipment that has exceeded the District's minimum replacement thresholds (either hours/year/maintenance cost). In addition, the fire bulldozer and attachments will play a critical role as the primary heavy equipment utilized in aiding the Districts prescribed fire program and wildfire response as well as land management activities throughout the District.

District purchases of heavy equipment will be made using state and alternate contract sources first, followed by the local market within the District's 16-county area, followed by areas outside the District 16-county area.

The District anticipates the following purchases for FY 2024-2025 (\$360,000):

- **State of Florida and/or Florida Sheriff’s Association contract for the purchase of Heavy Equipment:** one (1) Caterpillar D3 LGP Tract Type Fire Bulldozer and attachments, not to exceed \$360,000. The purchase of the fire bulldozer is being purchased to replace the 2003 Caterpillar D5G LGP Tract Type Bulldozer that has met the District’s minimum replacement threshold to aid in land management activities.

Type	Quantity	Division	FY Purchase	Amount
Fire Bulldozer	1	ASM	FY 24-25	\$360,000

**NORTHWEST FLORIDA WATER MANAGEMENT DISTRICT**

**MEMORANDUM**

TO: Governing Board

THROUGH: Lyle Seigler, Executive Director  
Andrew Joslyn, Deputy Executive Director  
Caitlin Brongel, Chief of Staff  
Kathleen Coates, Director, Resource Management Division  
Jerrick Saquibal, Chief, Bureau of Resource Projects & Planning

FROM: Darryl Boudreau, Resource Planning Program Manager

DATE: February 13, 2025

SUBJECT: Consideration of Grant Funding to Augment the 2025 National Coastal Condition Assessment (NCAA) for the Choctawhatchee Watershed and the St. Andrew Bay Watershed

---

**Recommendation**

Staff recommends the Governing Board authorize the Executive Director to execute agreements with the Florida Department of Environmental Protection (FDEP), Choctawhatchee Basin Alliance (CBA) and the St. Andrew and St. Joseph Bays Estuary Program (SASJBEP) to receive and provide a total of \$150,000 in Florida Coastal Management Program (FCMP) grant funding.

**Background**

Every five years, EPA conducts a National Coastal Condition Assessment (NCCA). The NCCA sampling design uses a statistical approach such that the results provide a statistically valid assessment of the country's coastal waters at a national level. The NCCA evaluates four indices of condition: water quality, sediment quality, benthic community condition, and fish tissue condition. The focus of these grant funds is to expand the number of sampling locations in St. Andrews, St. Joseph, and Choctawhatchee Bays. Sampling locations will be selected using a statistical approach such that the results (along with the results from the NCCA) will provide a statistically valid assessment of the condition of each bay. To fund this effort, District staff successfully partnered with the SASJBEP and CBA to submit two \$75,000 FCMP grant proposals to FDEP. The District will execute agreements with FDEP to receive each of the two \$75,000 grants and then execute agreements to provide \$75,000 in grant funding each to CBA and the SASJBEP. This effort builds on the work that CBA, St. Andrews Baywatch and the SASJBEP have been doing to assess each watershed, including the State of the Watershed Report that the SASJBEP recently completed.

**NORTHWEST FLORIDA WATER MANAGEMENT DISTRICT**

**MEMORANDUM**

TO: Governing Board

THROUGH: Lyle Seigler, Executive Director  
Andrew Joslyn, Deputy Executive Director  
Caitlin Brongel, Chief of Staff  
Danny Layfield, Director, Division of Asset Management

FROM: Carol L. Bert, Chief, Bureau of Asset Management Administration

DATE: January 28, 2025

SUBJECT: Approval of Resolution No. 951 Declaring 40 Acres of District Land as Surplus for Exchange with Stella Davis Plantation Trust

---

**Recommendation**

Staff recommends approval of Resolution No. 951 declaring approximately 40 acres of District land located in Walton County as surplus for exchange with Stella Davis Plantation Trust (SDPT) for approximately 80 acres and make a determination that the District parcel for this exchange is no longer needed for the purposes for which it was acquired, but instead is best used for an exchange of property and a conservation easement will be retained on the District parcel.

**Background**

Resolution No. 951, if approved, will declare the fee simple interest in approximately 40 acres in Walton County, Florida, part of the Choctawhatchee River WMA, as surplus. Through an exchange, the District would receive an approximate 80-acre parcel in Washington County, part of the Econfina Creek WMA, and eliminate an inholding in District ownership (see attached maps). The District 40-acre +/- parcel was acquired from Mutual of New York utilizing Preservation 2000 funds and was part of a bigger acquisition that consisted of over 15,000 acres.

**Stella Davis Plantation Trust Parcel**

This is an approximate 80-acre parcel composed primarily of lake bottom that is an inholding in District ownership in Washington County in the Econfina Creek WMA. Previous attempts to purchase were unsuccessful.

### **District Parcel**

This is an approximate 40-acre parcel composed primarily of uplands containing a 51-year-old slash pine plantation with an approximate value of \$123,000 (based on last cruise in 2015 and the District's last timber sale prices). SDPT has agreed to enter into an agreement allowing the District three years to harvest the slash pine timber from this parcel and would also grant the District a Silvicultural Access License. In addition, the District would retain a conservation easement on this approximate 40-acre parcel.

According to s. 373.089(6)(c), F.S., all lands vested in the governing board prior to July 1, 1999, shall be deemed to have been acquired for conservation purposes. This parcel was acquired in 1992 and therefore was acquired for conservation purposes and a determination that this parcel is no longer required for conservation purposes and may be disposed by the District requires a two-thirds or greater vote by the Governing Board.

### **Distribution of Costs**

The District and SDPT will split the associated costs for this exchange. Sufficient funds are budgeted in the FY 2024-25 budget and associated costs would be paid from the District's land acquisition account.



Lyle Seigler  
Executive Director

## Northwest Florida Water Management District

81 Water Management Drive, Havana, Florida 32333-4712  
(U.S. Highway 90, 10 miles west of Tallahassee)

Phone: (850) 539-5999 • Fax: (850) 539-2777

### **RESOLUTION NO. 951 FOR DECLARING APPROXIMATELY 40 ACRES AS SURPLUS TO CONDUCT AN EXCHANGE; CHOCTAWHATCHEE RIVER WMA**

**WHEREAS**, the Governing Board of the Northwest Florida Water Management District (hereinafter referred to as the "District") has the duty and responsibility under Chapter 373, Florida Statutes, for the management of water and related land resources and for preservation of natural resources, fish and wildlife; and

**WHEREAS**, the District is governed by a governing board (hereinafter called the "Governing Board") as provided in Section 373.073, Florida Statutes; and

**WHEREAS**, the District owns certain real property; and

**WHEREAS**, the District has determined that it is in the best interest of the District to surplus the fee simple interest yet retain a conservation easement on approximately 40 acres of real property (the "Property"), in exchange for the fee simple interest in approximately 80 acres, shown on the attached maps; and

**WHEREAS**, Section 373.089, Florida Statutes, authorizes the District to sell or exchange real property provided certain requirements are met; and

**WHEREAS**, the legal interest to be surplusd is fee simple title, as encumbered by a conservation easement; however, the District will receive the fee simple interest in an approximate 80-acre parcel located in Washington County in exchange for this Property; and

**WHEREAS**, such statutory requirements have been met or will be met prior to closing and the Governing Board wishes to enter into a contract and complete the exchange as set out therein; and

**NOW THEREFORE, BE IT RESOLVED** by the Governing Board of the Northwest Florida Water Management District as follows:

1. The Governing Board has determined by a two-thirds or greater vote that (i) fee simple ownership of the Property is no longer needed yet a conservation easement shall be retained to protect the conservation values of the District parcel; (ii) the Property is hereby determined to be surplus and the fee simple interest, encumbered by a conservation easement, may be disposed of by the District; and (iii) upon disposition, the District will acquire an approximate 80-acre parcel through an exchange.
2. Certified appraisals must show that the appraised value of the District parcel is greater than or equal to the appraised value of the parcel to be received by the District.
3. Walton County has a population less than 100,000.

GEORGE ROBERTS  
Chair  
Panama City

JERRY PATE  
Vice Chair  
Pensacola

NICK PATRONIS  
Secretary  
Panama City

JOHN W. ALTER  
Malone

GUS ANDREWS  
DeFuniak Springs

TED EVERETT  
Chipley

KELLIE RALSTON  
Tallahassee

ANNA UPTON  
Tallahassee

4. The exchange of the Property will meet the requirements of Section 373.089, Florida Statutes.
5. The Executive Director of the District, the District attorney and all other officers and employees of the District are hereby authorized and directed to do all things necessary to complete the exchange/surplus of this parcel as outlined in this resolution.
  - a. Execute, on behalf of the District, the deed, closing statements, closing affidavits, disclosures and other documents reasonably required for closing.
  - b. Comply with all of the requirements of Section 373.089, Florida Statutes, which have yet to be fulfilled including:
  - c. The Governing Board shall fix the terms and conditions necessary to conduct the exchange of the properties.

**ADOPTED AND APPROVED** this 13th day of February, 2025, A.D.

The Governing Board of the  
**NORTHWEST FLORIDA  
WATER MANAGEMENT  
DISTRICT**

---

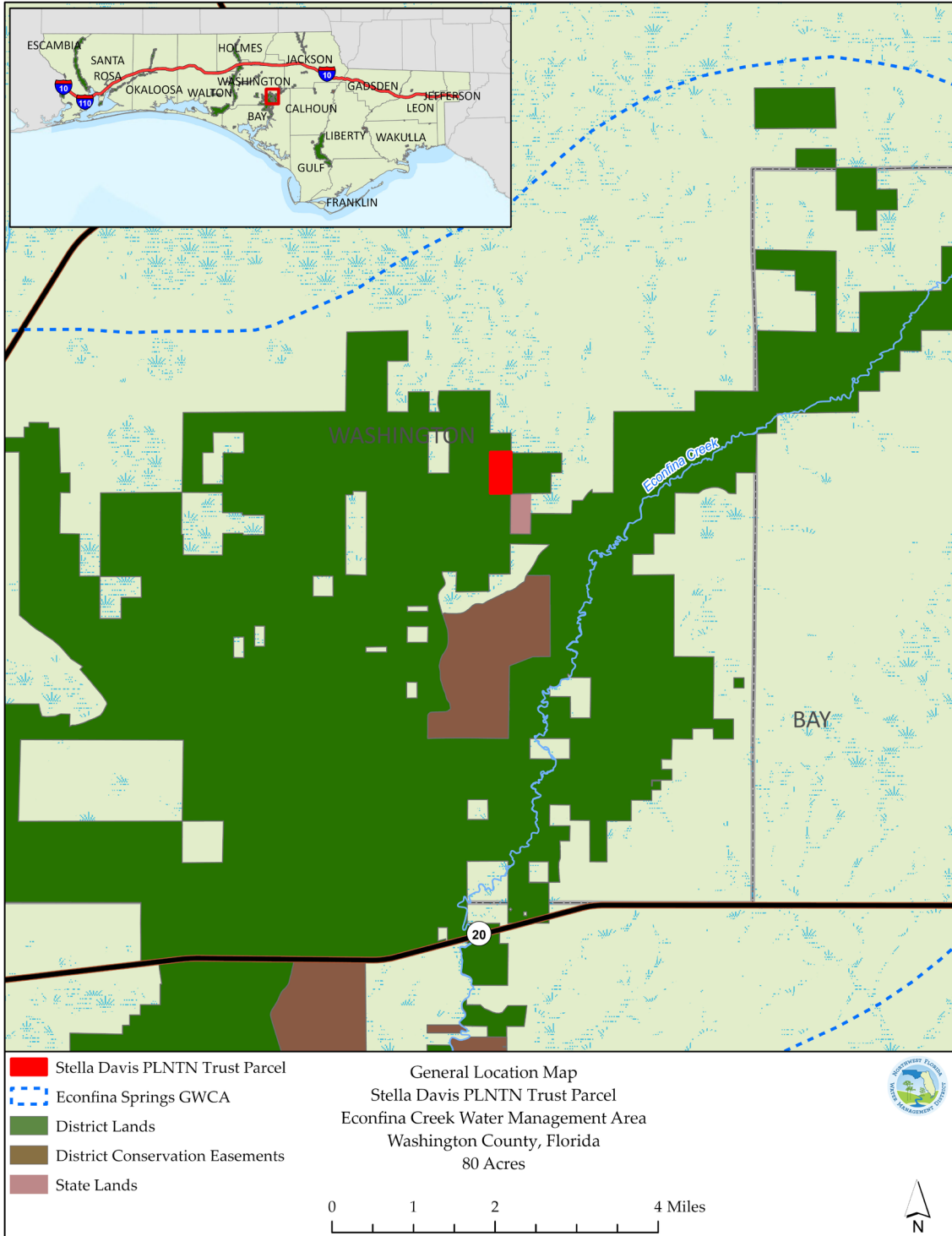
George Roberts, Chair

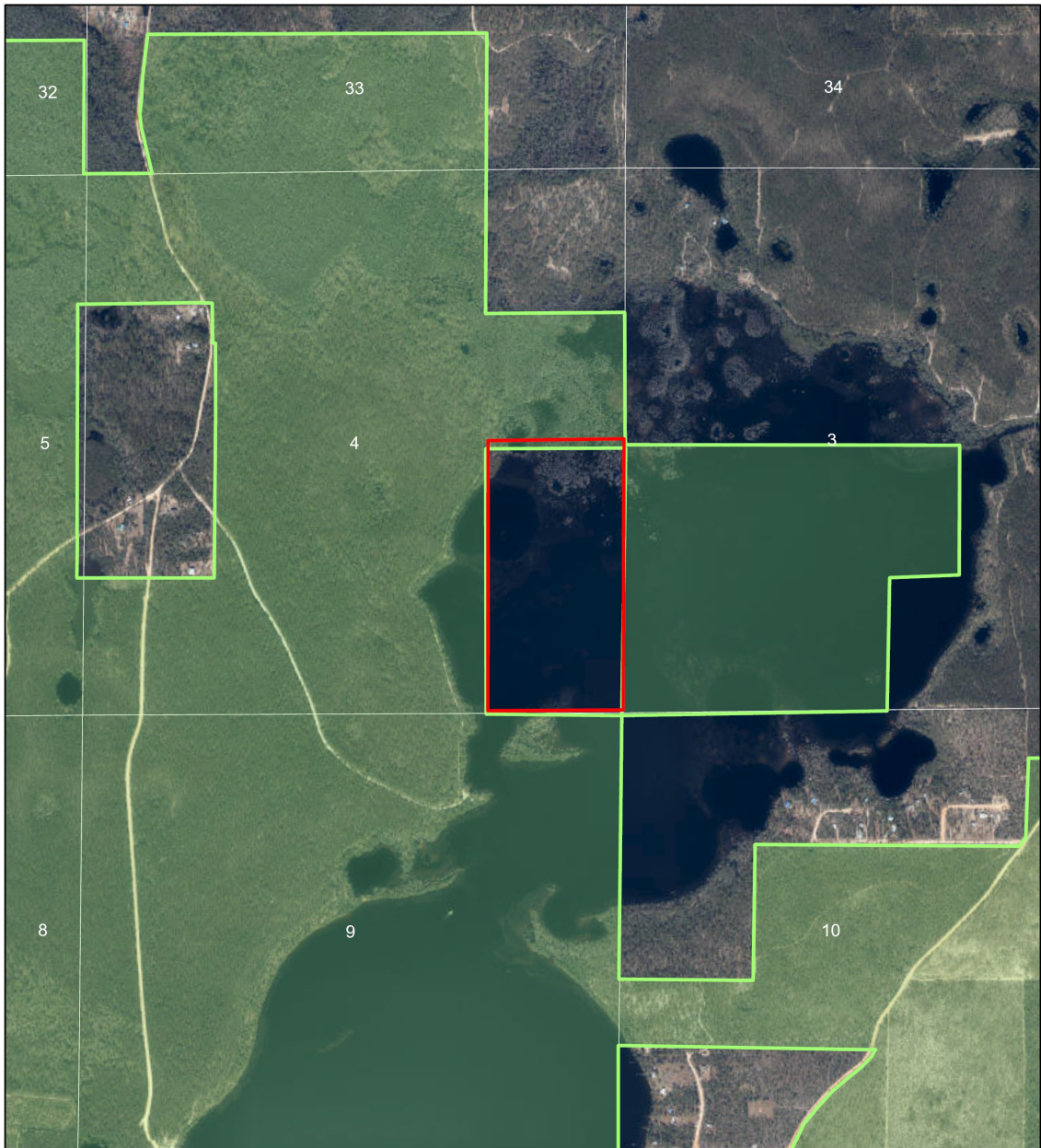
**ATTEST:**

---

Nick Patronis, Secretary/Treasurer







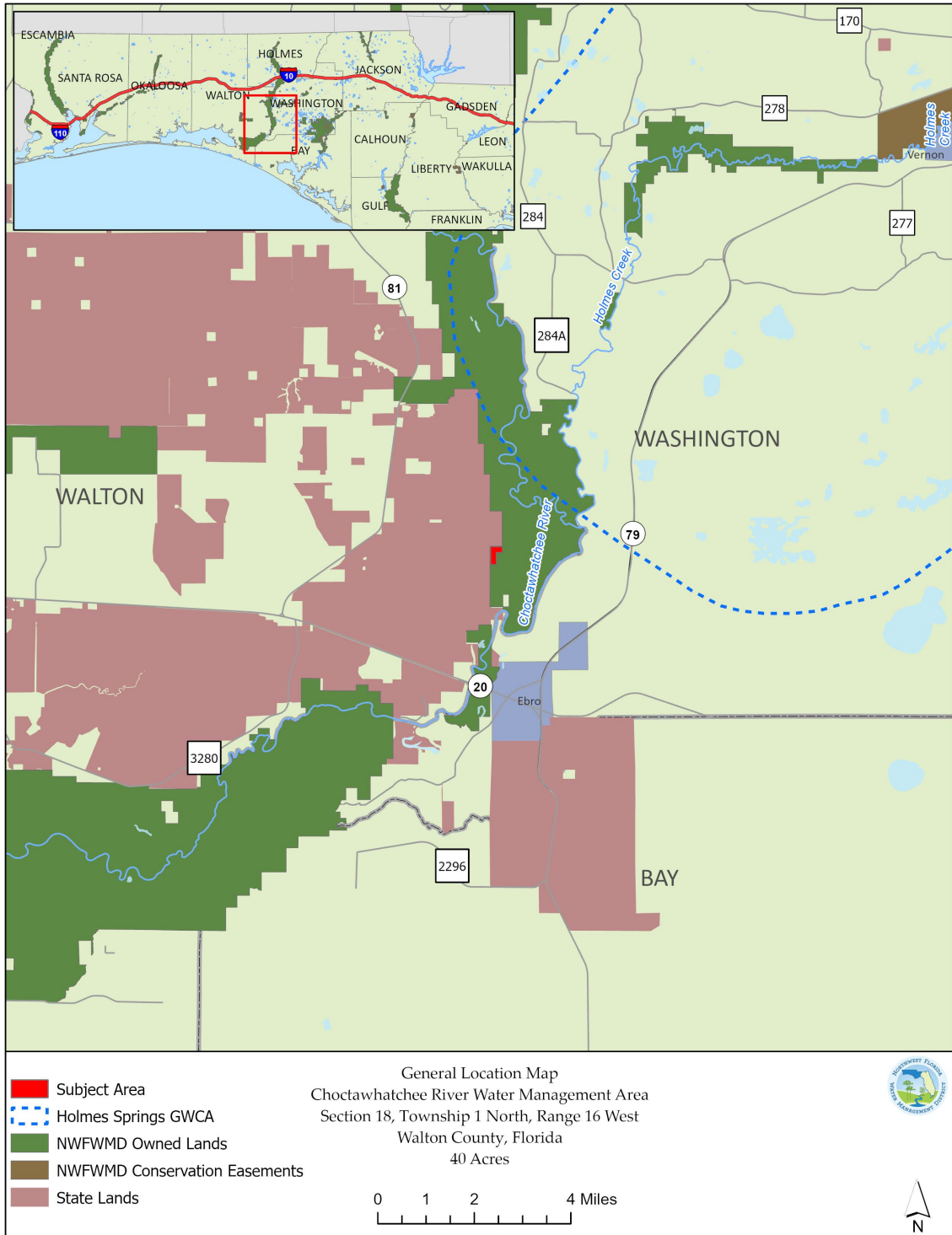


Stella Davis PLNTN Trust Parcel  
 Econfina Creek WMA  
 Section 4, Township 1 North, Range 13 West  
 Washington County, FL  
 80 Acres

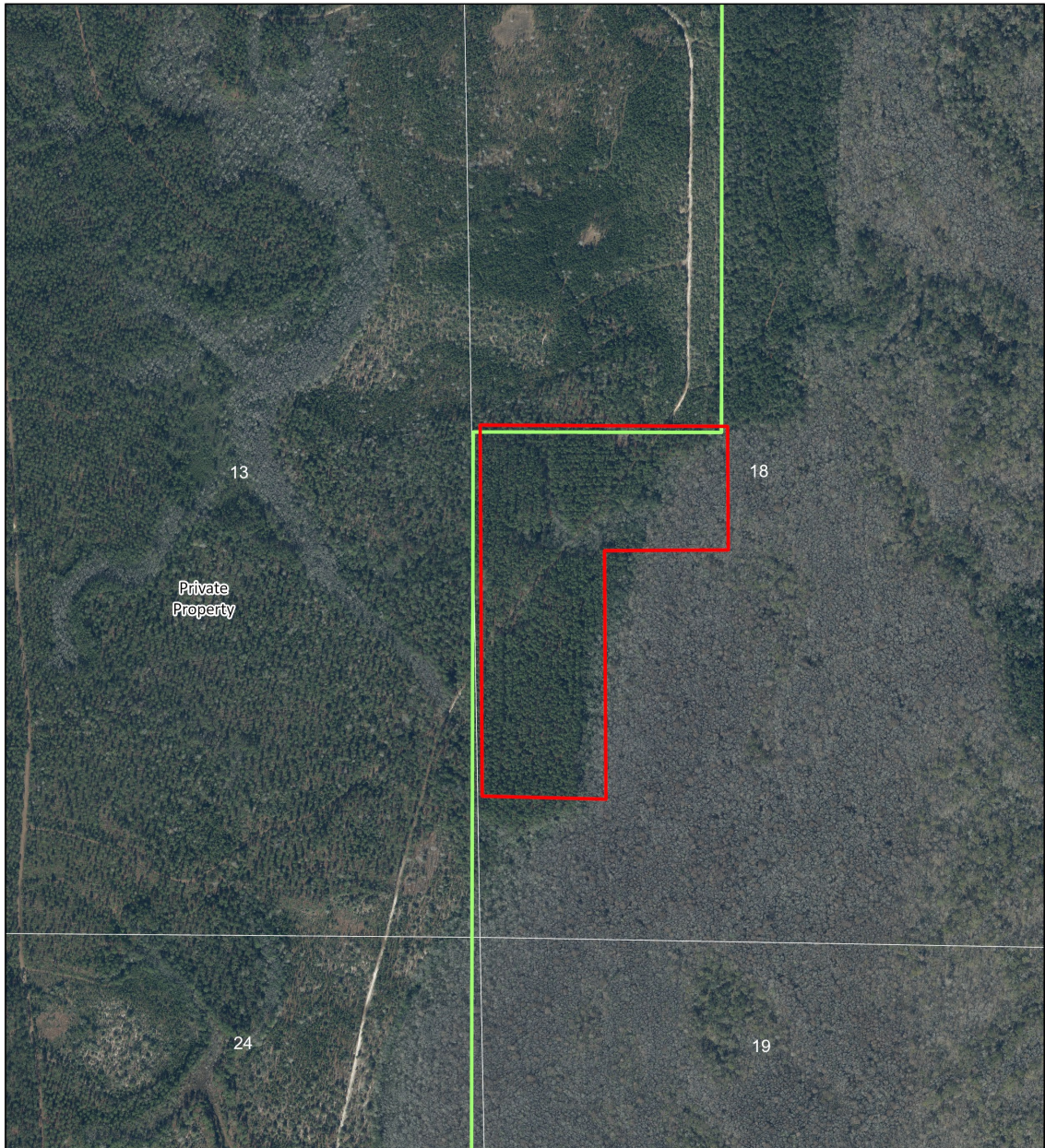
NFWMD Owned Lands  
 NFWMD Conservation Easements  
 Stella Davis PLNTN Trust Parcel



0    0.13    0.25    0.5 Miles

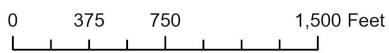






-  Subject Area
-  NFWMD Owned Lands

Choctawhatchee River Water Management Area  
Section 18, Township 1 North, Range 16 West  
Walton County, Florida  
40 Acres



**NORTHWEST FLORIDA WATER MANAGEMENT DISTRICT**

**MEMORANDUM**

TO: Governing Board

THROUGH: Lyle Seigler, Executive Director  
Andrew Joslyn, Deputy Executive Director

FROM: Sydney Bunch, Human Resources

DATE: February 13, 2025

SUBJECT: Consideration of Employee Health and Life Insurance

---

**Recommendation**

Staff recommends the Governing Board authorize the executive director to negotiate and select employee health and life insurance policies for the year beginning April 1, 2025, and ending March 31, 2025.

**Background**

The District's current employee health coverage, a dual option plan with Capital Health Plan of Tallahassee (an HMO) and Florida Blue (a PPO) will expire on March 31. Insurance is scheduled to be renewed on an annual basis with the approval of the Governing Board.

In addition to health insurance, the District provides a \$25,000 life insurance policy for employees in authorized positions through Sun Life, Inc. The rates paid by the District for life insurance and accidental death and dismemberment (ADD) insurance are not expected to increase.

**NORTHWEST FLORIDA WATER MANAGEMENT DISTRICT**

**MEMORANDUM**

TO: Governing Board

THROUGH: Lyle Seigler, Executive Director  
Andrew Joslyn, Deputy Executive Director  
Caitlin Brongel, Chief of Staff  
Danny Layfield, Director, Division of Asset Management

FROM: Benjamin Faure, Bureau Chief, Land Management Operations

DATE: February 5, 2025

SUBJECT: Consideration of ITB 25B-005 for District Road Repair Services

---

**Recommendation**

Staff recommends the Governing Board award up to \$158,209.00 in District Road Repair Services to vendors deemed responsive to ITB 25B-005 and authorize the Executive Director to enter into agreements with contractors submitting the lowest bid per road, subject to legal counsel review.

**Background**

On January 17, 2025, the District issued Invitation to Bid (ITB) 25B-005 to conduct District Road Repair Services on two District-owned roads totaling approximately 3 miles in Bay and Escambia counties. The ITB was posted on the My Florida Market Place Vendor Information Portal, DemandStar, the District website, and the Florida Administrative Register. Notices were also sent to companies who had previously expressed an interest in District Road Repairs.

The Road Repair Services ITB includes the supply, delivery, and installation of native limerock along District roadways to stabilize them for public recreation and management access purposes. The ITB utilized a process that provided the opportunity to award the work by individual road section. Each road was bid individually to provide the necessary road repair services at a fixed-price per ton, with the company(ies) submitting the lowest price per ton being the lowest bid.

On February 5, 2025, at 2:00 P.M. ET, the District received three sealed bids for the Road Repair Services ITB. The lowest bid price per ton for each road repair section is contained in Table 1. These prices are inclusive of all components to complete the Work including equipment, materials, installation, labor, delivery, mobilization, and demobilization costs. In the event the lowest bidder withdraws its bid, the District intends to award the work to the next-lowest bidder and adjust and prioritize the road repairs to fit within the available budget. Funds are available in the FY 2024-25 budget for these services.

**Table 1 – Bids Submitted – Lowest Price Per Ton and Recommended Award**

<b>Road No.</b>	<b>County</b>	<b>Road Repair/ Project Name</b>	<b>Length (Feet)</b>	<b>Material Tonnage (Rock)</b>	<b>Current Low Price Per Ton Bid Received*</b>	<b>Total for Road Repair Services</b>	<b>Company</b>
1	Bay	Ward Creek West Road	11,840	1,600 T	<b>\$64.39</b>	<b>\$103,024.00</b>	<b>Empower Contracting Solutions, Inc.</b>
2	Escambia	Frank Reeder Loop Road	3,450	750 T	<b>\$73.58</b>	<b>\$55,185.00</b>	<b>Empower Contracting Solutions, Inc.</b>



Exhibit Map: General Location of Ward Creek West



General Location Map  
Ward Creek West  
Bay County, Florida



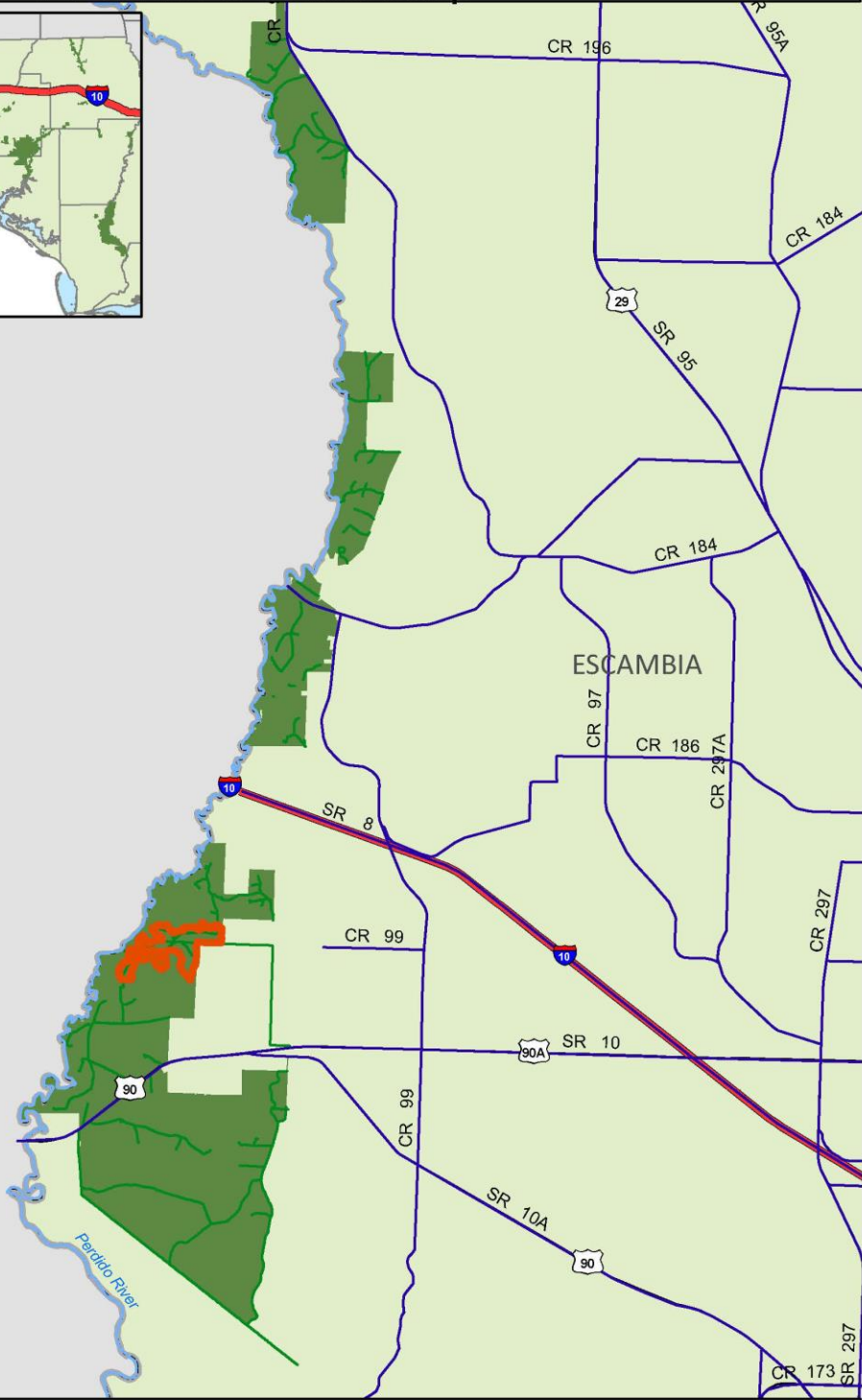
NFWMD Lands

0 5 10 Miles





# General Location Map



- Frank Reeder Tract
- NFWWMD Lands

General Location Map  
Perdido River WMA  
Escambia County, Florida

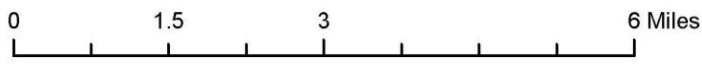




Exhibit Map



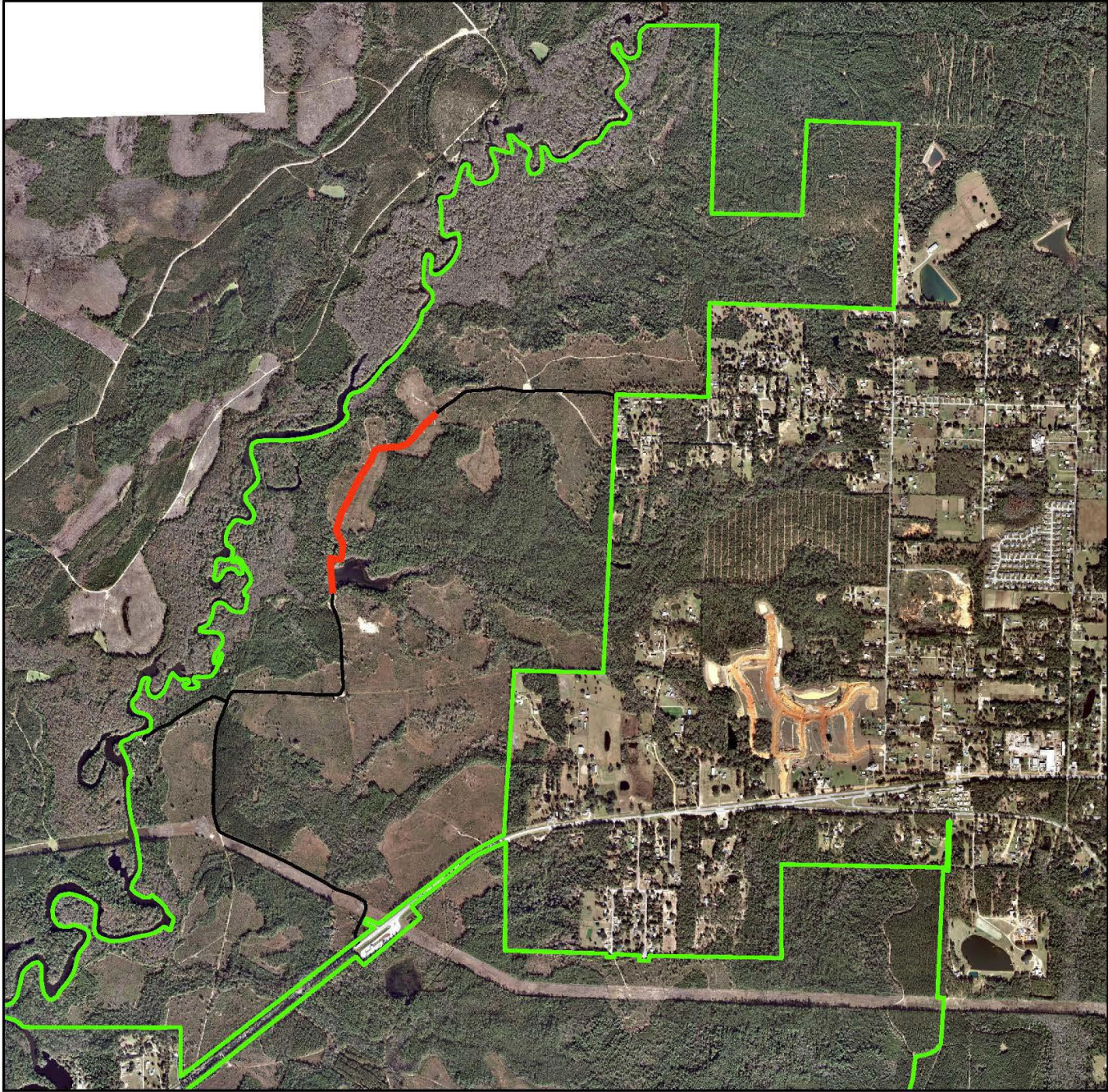
-  NFWMD Lands
-  Road Repair (11,840 FT)

Ward Creek West Mitigation Area  
Bay County, Florida (2022 DOQ)  
STR 36, 2S, 17W; 31, 2S, 16W;  
32, 2S, 16W; 1, 3S, 17W; 6 3S, 16W



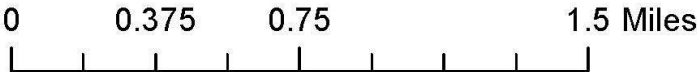


# Exhibit Map



-  NFWMD Lands
-  Road Repair (3,450 FT)
-  Frank Reeder Loop Rd

Perdido River WMA  
Escambia County, Florida  
STR 2, 1S, 32W





NORTHWEST FLORIDA WATER MANAGEMENT DISTRICT  
PUBLIC HEARING FOR REGULATORY MATTERS  
A G E N D A

District Service Office  
700 US Highway 331 South  
DeFuniak Springs, Florida 32540

Thursday  
February 13, 2025  
1:05 p.m., CT

Note: Appeal from any NFWMD Final Agency Action requires a record of the proceedings. Although Governing Board meetings are normally recorded, affected persons are advised that it may be necessary for them to ensure that a verbatim record of the proceedings is made, including the testimony and evidence upon which the appeal is to be based. Persons with disabilities or handicaps who need assistance or reasonable accommodation in order to participate in these meetings should contact the District at least 72 hours in advance of these meetings to make appropriate arrangements.

PART I

• WATER USE PERMITS

A. Permit Modification

A-1 Applicant: Lesley Leonard, Pace Water Systems, Inc.  
App. No.: 2B-113-63-10  
Use: Public Supply

Authorization Statement: This Permit authorizes the Permittee to make a combined annual average withdrawal of 6.1 million gallons per day (250 million gallons per month maximum) of groundwater from the Sand and Gravel aquifer for public supply use.

Duration Recommended: August 1, 2033  
Staff Recommendation Approval  
Public Comment Received: No

WATER USE TECHNICAL STAFF REPORT  
12-January-2025  
Application No.: 2B-113-63-10

**Owner:** Lesley Leonard  
Pace Water System, Inc.  
4401 Woodbine Rd  
Pace, FL 32571-8758  
(850) 994-5129

**Applicant:** Same as Owner

**Agent:** Deziree Ramirez  
Poly, Inc.  
102 Sunset Ln  
Shalimar, FL 32579-1044  
(850) 609-1100

**Compliance Contact:** Rachel Lee  
Pace Water System, Inc.  
4401 Woodbine Road  
Pace, FL 32571  
(850) 994-5129

Darryl Peek  
Pace Water System, Inc.  
4401 Woodbine Rd  
Pace, FL 32571-8758  
(850) 994-5129

**Project Name:** Pace Water System, Inc.

**County:** Santa Rosa

**WRCA:** N/A

**ARC:** N/A

**Objectors:** No

**Authorization Statement:**

This Permit authorizes the Permittee to make a combined annual average withdrawal of 6.1 million gallons per day (250 million gallons per month maximum) of groundwater from the Sand-and-Gravel aquifer for public supply use.

**Recommendation:** Approval

**Reviewers:** Cindy Fischler; Scott White; Dylan Cook; Alex Weinrich

**RECOMMENDED PERMIT DURATION AND COMPLIANCE REPORTING:**

Staff recommends the permit expiration date remain August 1, 2033. The Permittee is required to submit and comply with all information and data pursuant to the conditions set forth in the permit.

**WITHDRAWAL INFORMATION:**

Sand-and-Gravel Aquifer Water Use	Permitted	Requested	Recommended
Average Day (GPD)	6,100,000	6,100,000	6,100,000
Maximum Month (GAL)	250,000,000	250,000,000	250,000,000

**DESCRIPTION:**

Pace Water System, Inc. requests modification of Individual Water Use Permit (IWUP) No. 2B-113-63-9 for the construction of an additional public supply well and for the continued authorization of groundwater withdrawals from the Sand-and-Gravel aquifer for public supply use without changes to the currently permitted withdrawal amounts.

Pace Water System withdraws water from the Sand-and-Gravel aquifer to serve approximately 17,800 public supply customers. Pace Water System requests to construct an additional public supply well to add redundancy to supply sources and allow for necessary operational maintenance of existing wells, while sustaining sufficient supply to system users. The recommended average daily rate is unchanged and is considered reasonable and adequate to meet the applicant's water use demands for the requested permit duration.

Pace Water System's groundwater withdrawals represent an existing, long-term use of the Sand-and-Gravel aquifer. Considering that no additional withdrawals are requested, no additional impacts to the Sand-and-Gravel aquifer are anticipated. No harm to existing legal uses of water or the water resources is anticipated to occur from the proposed withdrawals.

**PERMIT APPLICATION REVIEW:**

Section 373.223, Florida Statutes (F.S.), and section 40A-2.301, Florida Administrative Code (F.A.C.), require an applicant to establish that the proposed use of water:

- (a) Is a reasonable-beneficial use;
- (b) Will not interfere with any presently existing legal use of water; and,
- (c) Is consistent with the public interest.

In addition, the above requirements are detailed further in the District's Water Use Permit Applicant's Handbook. District staff have reviewed the water use permit application pursuant to the above-described requirements and have determined that the application meets the conditions for issuance of this permit.

**RECOMMENDATION:**

It is the determination of the staff that the water use amounts recommended, as conditioned, are reasonable-beneficial, consistent with the public's interest, and will not interfere with any presently existing legal use of water. This determination has been made according to provisions of Chapter 373, F.S., and Chapter 40A-2, F.A.C.

Staff recommends that the applicant be granted an Individual Water Use Permit for a combined annual average withdrawal of 6.1 million gallons per day (250 million gallons per month maximum) of groundwater

from the Sand-and-Gravel aquifer for public supply use. Staff also recommends that the expiration date of the permit remain August 1, 2033, and that the permit be conditioned as per the "Conditions for Issuance" included in Exhibit A of the permit document.

**FACILITY INFORMATION:**

**Site Name:** Pace Water System, Inc.

Well Details								
District ID	Station Name	Casing Diameter (inches)	Casing Depth (feet)	Total Depth (feet)	Capacity (GPM)	Source Name	Status	Use Type
16279	PWS #1	20	200	290	700	Sand-and-Gravel	Active	Public Supply
16280	PWS #2	16	210	297	700	Sand-and-Gravel	Active	Public Supply
16281	PWS #3	16	282	341	700	Sand-and-Gravel	Active	Public Supply
16282	PWS #4	12	234	285	480	Sand-and-Gravel	Active	Public Supply
16283	PWS #5	16	245	345	1,000	Sand-and-Gravel	Active	Public Supply
16284	PWS #6	24	215	380	1,000	Sand-and-Gravel	Active	Public Supply
16285	PWS #7	24	230	405	1,000	Sand-and-Gravel	Active	Public Supply
16286	PWS #8	24	238	560	1,000	Sand-and-Gravel	Active	Public Supply
16287	PWS #9	24	270	504	1,000	Sand-and-Gravel	Active	Public Supply
16288	PWS #10	24	240	340	1,753	Sand-and-Gravel	Active	Public Supply
16289	PWS #11	24	250	323	1,284	Sand-and-Gravel	Active	Public Supply
339848	PWS #12	24	285	350	1,500	Sand-and-Gravel	Proposed	Public Supply

<b>Connection Point Details</b>				
<b>District ID</b>	<b>Station Name</b>	<b>Source Name</b>	<b>Status</b>	<b>Use Type</b>
340555	Pace Water/Bagdad Garcon Utilities	Bagdad Garcon Utilities	Active	Public Supply

<b>Monitoring Well Details</b>						
<b>District ID</b>	<b>Station Name</b>	<b>Casing Diameter (inches)</b>	<b>Casing Depth (feet)</b>	<b>Total Depth (feet)</b>	<b>Source Name</b>	<b>Status</b>
16278	MW #11	6	270	310	Sand-and-Gravel	Active





**PERMIT IS CONDITIONED UPON:**

See conditions on attached "Exhibit A," dated \_\_\_\_\_.

**AUTHORIZED BY:** Northwest Florida Water Management District  
Division of Regulatory Services

By: \_\_\_\_\_  
Signature  
Division Director

**"EXHIBIT A"**  
**CONDITIONS FOR ISSUANCE OF PERMIT NUMBER 2B-113-63-10**  
**Pace Water System, Inc.**  
**DATED \_\_\_\_\_.**

**Specific Conditions**

1. This permit shall expire on August 1, 2033.
2. This Permit authorizes the Permittee to make a combined annual average withdrawal of 6.1 million gallons per day (250 million gallons per month maximum) of groundwater from the Sand-and-Gravel aquifer for public supply use. The individual facilities authorized to make this combined withdrawal are shown in the table below. The total combined amounts of water withdrawn by all facilities listed shall not exceed the amounts identified above.
3. Individual Withdrawal Facility Authorization

Facility ID #	FLUWID	Location SEC,TWN,RNG
PWS #1	AAA5287	Sec.16,T1N,R29W
PWS #2	AAA5288	Sec.10,T1N,R29W
PWS #3	AAA5289	Sec.12,T1N,R29W
PWS #4	AAA5290	Sec.36,T1N,R29W
PWS #5	AAA5291	Sec.12,T1N,R29W
PWS #6	AAA5292	Sec.18,T1N,R28W
PWS #7	AAA5293	Sec.28,T2N,R29W
PWS #8	AAA5294	Sec.04,T1N,R29W
PWS #9	AAA8392	Sec.29,T2N,R29W
PWS #10	AAG3695	Sec.02,T1N,R29W
PWS #11	AAL6577	Sec.25,T2N,R30W
PWS #12	To be assigned	Sec.27,T1N,R29W

4. The Permittee shall include the Individual Water Use Permit number and the well’s Florida Unique Identification Number (e.g. AAA5287 for PWS #1) when submitting reports or otherwise corresponding with the District.
5. The Permittee, by January 31 of each year, shall submit a water use report for the previous calendar year (January – December), even if no water is used. The Permittee shall record the data required including total water usage on Water Use Summary Reporting Form (Form 172). The Permittee shall also separately report any bulk water purchased or sold using interconnections with other utilities. The Permittee shall record the meter readings on January 1 and December 31. The Permittee, prior to the installation of a flow meter on the well head of PWS #12, shall record the water usage based on pump run time or other approved methods. The Permittee, if preferred, may submit the report electronically by downloading the correct form from the District website, filling it out properly, and e-mailing it to [compliance@nwfwater.com](mailto:compliance@nwfwater.com). The next report is due by January 31, 2026.
6. Upon well completion of well PWS #12, the Permittee shall install, in working order, an in-line totalizing flow meter at the well head. The Permittee shall maintain, in working order, in-line

totalizing flow meters at the well heads on all production wells. The meters shall be maintained to be at least 95% accurate and any meter determined defective must be replaced within 30 days of its discovery. The Permittee, within 30 days of meter installation, shall provide documentation to the District that the required flow meters have been installed and report the initial meter readings.

7. The Permittee, by October 31, in the year 2029, and at the time of requesting a permit modification or renewal, shall submit documentation of the flow meter calibration and accuracy ratings for all flow meters to the District using the Flow Meter Accuracy Report Form (Form 170). The Permittee, if preferred, may submit the report electronically by downloading the correct form from the District website, filling it out properly, and e-mailing it to [compliance@nwfwater.com](mailto:compliance@nwfwater.com).
8. The Permittee shall submit to the District in a single electronic submittal the following information by January 31, April 30, July 31 and October 31 of each year:

- a. Static water level measurements for monitor well MW #11 (FLUWID AAL 8252) conducted during the first two weeks of each month for the previous three months (e.g. measurements for January, February, and March shall be submitted by April 30) using a District-approved water level measuring device. Water levels shall be taken following a 24-hour non-pumping period, as much as is practicable, reported as depth-to-water below a pre-defined measuring point. All measurements shall be taken from the same measuring point. If the measuring point is different from land surface elevation, then the Permittee shall provide the measuring point distance above or below land surface. All static water level reports shall include the date and time the well was turned off, date and time the measurement was taken, method and device used, and the water level measurement to 0.01 foot for steel/electric tape and 1.0 foot precision for airline methods, respectively. The Permittee, if utilizing the airline method, shall also report airline length, gauge reading, linear distance of the airline terminus from land surface, and a description of where the airline terminates (e.g. land surface, pump base, pressure gauge, etc.).

The Permittee may submit the report electronically via digital media or, if preferred, by e-mailing it to [compliance@nwfwater.com](mailto:compliance@nwfwater.com). The Permittee, at the time of modification or renewal, shall submit a summary and analysis of the water level data collected for the wells for the entire period of record.

9. The Permittee, by July 31 every year, shall conduct and submit to the District the results of a comprehensive evaluation of water use practices in the Permittee's service area and a list of measures that provide for the enhancement of water conservation/efficiency measures, reduce water demand and water losses, and prevent exceedance of the authorized amounts. The list shall include but is not limited to:
  - a. The evaluation undertaken to identify/detect leaks and inaccurate flow meters and verify treatment losses;
  - b. The basis of the determinations made;
  - c. Other water conservation practices the Permittee determines are feasible to implement within a year of permit issuance or renewal;
  - d. Any water conservation/efficiency measures planned for future implementation; and,
  - e. Installation of equipment which supports conservation.

The Permittee shall include the measures implemented during the previous year. If the Permittee determines that any of the listed measures are no longer feasible, the report shall describe the specific reasons they cannot be implemented.

10. The Permittee, by December 31, in the year 2029, and at the time of permit renewal or modification shall provide a map showing areas where service is actually provided as well as the

overall franchise area allocated to the utility by the county, Public Service Commission or other authorizing entity. Definable areas within a service area that are served by domestic potable wells shall be delineated as non-served unless the area will be supplied by the utility within the term of the permit. The Permittee shall submit the map in digital format compatible with ESRI ArcGIS software, if available.

11. The Permittee shall ensure its Water Conservation and Efficiency Program achieves the goals listed below on an annual basis. The Permittee, by March 31 of each year and at the time of permit modification or renewal, shall report to the District its performance regarding each element of the Water Conservation and Efficiency Program during the previous calendar year.
  - a. Achieve and maintain the following phased-in water loss reduction goals: Total and real water losses less than or equal to 20 percent or less of the distribution system by year 2026, total and real water losses less than or equal to 15 percent or less of the distribution system by year 2029, and total and real water losses less than or equal to 10 percent of the distribution system by year 2032 and thereafter, unless the Permittee demonstrates using American Water Works Association (AWWA) methods or other District-approved methods that a higher loss rate is appropriate for the distribution system. The Permittee shall report water losses each year, compare estimated water losses to the goal(s), and briefly describe ongoing or planned water loss reduction measures.
  - b. Maintain average residential per capita daily water use of 110 gallons or less. The residential per capita water use shall be calculated as the amount of water used by residential dwelling units divided by the residential population served. The residential population served can be estimated as the number of residential dwelling units served multiplied by the average persons per household derived from US Census data. Adjustments to account for seasonal or tourist populations can be made, if adequately documented. The Permittee shall report a summary description of status regarding the per capita use goal.
  - c. Initiation or continued implementation and enhancement of a public education and information campaign to promote water conservation and efficiency. The campaign shall consist of activities such as informative billing, periodic mail outs to customers, website announcements, newspaper notices, etc. Public education and information efforts shall be implemented at least annually. The Permittee shall provide a description of the public education and information campaign. The Permittee shall utilize a strategy designed to regularly reach year-round and part-time residents and tourists. The campaign may consist of newspaper notices and articles, periodic radio and television announcements, periodic mail-outs to customers and the posting of signs and informational brochures in the rooms of hotels, motels and rental property. The campaign shall be oriented to emphasize the program being implemented and water conservation in general, and on at least an annual basis, shall also specifically inform existing customers of ways to save water, ways to detect leaks, reduce demands, enhance efficiency, and detail the automatic irrigation shut-off requirement of Chapter 373.62, F.S. The Permittee shall provide a description of the public education and information campaign to the District by March 31st of each year.
  - d. The Permittee shall submit a copy of its rate structure annually. The Permittee shall perform a rate structure evaluation with the intended purpose of creating or maintaining a structure to promote water use efficiency and discourage waste while providing for a life-line initial rate. Any refinements shall take into consideration the water use characteristics of the service area and provide financial incentives to customers to conserve and use water efficiently. The Permittee, by March 31, 2029, shall submit to the District the results of the evaluation, a schedule for considering the changes to such a rate structure, and a projection of the amount of water to be conserved.
12. The Permittee, by March 31 of each year, shall report to the District the following information for the previous calendar year:

a.

Use Type	Average Number of Active Meter Connections	Annual Average Water Use (Gallons per Day)
1. Residential (also complete table below)		
2. Commercial and Industrial Uses		
3. Agricultural Uses		
4. Non-Residential Recreational/Aesthetic Uses		
5. Water Sold/Transferred to Other Utilities		
6. Institutional Uses (schools, hospitals, etc.)		
7. Fire Protection and Other Utility Uses		
8. Other _____ (describe)		
TOTAL (Add items 1 through 8)		

b.

Residential Water Service Category	Number of Metered Connections	Number of Dwelling Units	Population Served (if available)	Annual Average Metered Use (Gallons per Day)
1. Single Family Dwelling Units				
2. Multiple Family Dwelling Units				
3. Mobile Home Dwelling Units				
TOTAL (Add items 1 through 3)				

13. The Permittee shall continue to expand and enhance its reuse system, with the goal of continuing to provide for 100 percent beneficial reuse of available wastewater flows. The Permittee, by March 31, 2028, shall provide the District with a progress report regarding the reuse utilization goal. The progress report shall include a description of the number and type of reuse customers, plans for reuse system improvements or expansion, and the annual average daily reuse amount and the amount of available reclaimed water.

14. The Permittee shall conduct and submit to the District, at the time of renewal, a quantitative analysis of hydrologic monitoring results over the duration of the 20-year permit period to include hydrographs. Specifically, the evaluation shall address any observed impacts to Floridan aquifer water level(s) and water quality. The analysis shall evaluate impacts to water levels and water quality by analyzing available water level data, water quality data, pumping data, rainfall data, and hydrogeological data. The Permittee shall discuss any observable trends in the data and provide an evaluation of whether observed trends are a potential result of the Permittee’s water use.

15. The Permittee shall encourage and provide for the efficient and non-wasteful use of water, and shall implement water conservation measures, including a proactive leak detection program, designed to enhance water use efficiency and reduce water demand and water losses.

**Standard Conditions**

16. All water uses authorized by this permit shall be implemented as conditioned by this permit, including any documents incorporated by reference in a permit condition. The District may revoke this permit, in whole or in part, or take enforcement action, pursuant to sections 373.136 or 373.243, F.S., unless a permit modification has been obtained to address the noncompliance.
17. The Permittee shall immediately notify the District in writing of any previously submitted information that is later discovered to be inaccurate.
18. This permit does not convey to the Permittee any property rights or privileges other than those specified herein, nor relieve the Permittee from complying with any applicable local government, state, or federal law, rule, or ordinance.
19. The Permittee shall notify the District in writing within 45 days of any sale, transfer, or conveyance of ownership or any other loss of permitted legal control of the project and/or related facilities from which the permitted water use is made. Where Permittee's control of the land subject to the permit was demonstrated through a lease, the Permittee must either submit documentation showing that it continues to have legal control or transfer control of the permitted system/project to the new landowner or new lessee. All transfers of ownership are subject to the requirements of section 40A-2.351, F.A.C. Alternatively, the Permittee may surrender the water use permit to the District, thereby relinquishing the right to conduct any activities under the permit.
20. Nothing in this permit should be construed to limit the authority of the District to declare a water shortage and issue orders pursuant to Chapter 373, F.S. In the event of a declared water shortage, the Permittee must adhere to the water shortage restrictions, as specified by the District. The Permittee is advised that during a water shortage, reports shall be submitted as required by District rule or order.
21. With advance notice to the Permittee, District staff with proper identification shall have permission to enter, inspect, observe, collect samples, and take measurements of permitted facilities to determine compliance with the permit conditions and permitted plans and specifications. The Permittee shall either accompany District staff onto the property or make provision for access onto the property.
22. The Permittee may seek modification of any term of an unexpired permit. The Permittee is advised that section 373.239, F.S., and section 40A-2.331, F.A.C., are applicable to permit modifications.
23. The Permittee shall maximize the use of reclaimed water if it is available and its use is environmentally, economically and technically feasible.
24. The Permittee shall not utilize water to fill or augment the level of waterbodies for aesthetic purposes.
25. The District reserves the right to curtail permitted withdrawal and diversion rates if the withdrawal or diversion causes harm to legal uses of water, offsite land use, or water resources and associated environmental features that existed at the time of permit application.
26. The Permittee shall not cause harmful saltwater intrusion. The District reserves the right to curtail permitted withdrawal rates if withdrawals cause harmful saline water intrusion.

27. The Permittee's consumptive use of water as authorized by this permit shall not reduce a flow or level below any minimum flow or level established by the District or the Department of Environmental Protection pursuant to sections 373.042 and 373.0421, F.S. If the Permittee's use of water causes or contributes to such a reduction, then the District shall modify or revoke the permit, in whole or in part, unless the Permittee implements all provisions applicable to the Permittee's use in a District-approved recovery or prevention strategy.
  
28. The Permittee shall mitigate any harm caused by withdrawals or diversions permitted herein on legal water uses, offsite land use, and water resources and associated environmental features which existed at the time of permit application. Mitigation may include modification of the Permittee's pumping schedule (i.e., duration, withdrawal rates, time of day, etc.), the lowering of the affected pump(s) or the replacement of the well(s) including proper plugging and abandonment of the well(s) that is replaced. The Permittee, upon receipt of an allegation of interference, shall retain the services of an appropriate licensed professional to investigate the alleged interference. The Permittee shall ensure their chosen professional investigates any alleged interference within 48 hours of the allegation being made and provides the conclusions of the investigation to the entity alleging the impact within 72 hours of the allegation being made. If it is determined that the use of a well has been impaired as a result of the Permittee's operation, the Permittee shall complete the required mitigation within 30 days. The Permittee shall be responsible for the payment of services rendered by the licensed professional. The Permittee, within 30 days of any allegation of interference, shall submit a report to the District including the date of the allegation, the name and contact information of the party making the allegation, the result of the investigation made, and any mitigation action undertaken.



**NORTHWEST FLORIDA WATER MANAGEMENT DISTRICT**

**MEMORANDUM**

TO: Governing Board

THROUGH: Lyle Seigler, Executive Director  
Andy Joslyn, Deputy Executive Director  
Caitlin Brongel, Chief of Staff  
Danny Layfield, Director, Division of Asset Management

FROM: Carol L. Bert, Chief, Bureau of Asset Management Administration

DATE: January 27, 2025

SUBJECT: *Public Hearing 1:10 p.m. CT* - Consideration of Florida Forever Water Management District Work Plan

---

**Recommendation**

Staff recommends the Governing Board approve the Florida Forever Water Management District Work Plan.

**Background**

Section 373.139(3), Florida Statutes, requires the District to adopt, following a public hearing, a Florida Forever Water Management District Work Plan. The District's 2025 land acquisition program will primarily focus on acquiring properties that improve the quality or quantity of water flowing from springs.

/cb

# Florida Forever Water Management District Work Plan



# Florida Forever Water Management District Work Plan

## Table of Contents

Introduction .....	1
Florida Forever Program .....	1
Acquisition Planning .....	1
Approved Acquisition Areas .....	2
Surplus Lands .....	3
Note to Landowners .....	3
Less Than Fee Methods of Land Protection .....	4
DEP Florida Forever Priority List .....	4
Critical Wetlands .....	4
Florida Forever Goals and Numeric Performance Measures .....	5
Land Acquisition Projects .....	6
Florida Forever District Work Plan .....	26
Implementation of the FY 2023-2024 Work Plan .....	27

## List of Tables

Table 1	Land Acquisition Expenditures by Water Management Area .....	1
Table 2	Approved Acquisition Areas .....	2
Table 3	District Surplus Lands.....	3
Table 4	Projects Currently Eligible for Florida Forever Funding.....	26
Table 5	Restoration, Enhancement, and Maintenance (2024) .....	30
Table 6	Access and Recreation Management (2024).....	31
Table 7	Projected Funding, Staffing, and Resource Management for FY 2024-2025 .....	32

## List of Figures

Figure 1	Proposed Land Acquisition Areas, 2025 .....	7
Figure 2	Proposed Land Acquisition Areas, 2025, West Region.....	8
Figure 3	Proposed Land Acquisition Areas, 2025, Central Region .....	15
Figure 4	Proposed Land Acquisition Areas, 2025, East Region .....	21

## Florida Forever Water Management District Work Plan Annual Report

### Introduction

Section 373.199(7), F.S. requires the Northwest Florida Water Management District (NFWFMD, or District) to annually update the Florida Forever Five-Year Work Plan. The 24th annual update of the plan contains information on projects eligible to receive funding under the Florida Forever Act and Land Acquisition Trust Fund and also reports on land management activities; surplus or exchanged lands; and the progress of funding, staffing, and resource management of projects for which the District is responsible. This plan also applies to land acquisition funds deposited into the Land Acquisition Trust Fund pursuant to s.28(a), Art. X of the State Constitution.

### Florida Forever Program

In 1999, the Florida Legislature passed the Florida Forever Act (s. 259.105, F.S.) which has continued the state’s long-term commitment to environmental land acquisition, restoration of degraded natural areas, and high-quality outdoor recreation opportunities.

While previous programs focused almost exclusively on the acquisition of environmentally sensitive lands, the Florida Forever program is somewhat different in that it authorizes the use of up to half of the program funding for certain types of capital improvement projects. Eligible uses of these funds include water resource development, stormwater management projects, water body restoration, recreation facilities, public access improvements, and removing invasive plants, among others. The remaining 50 percent must be spent on land acquisition. The table below illustrates actual expenditures for land acquisition using Florida Forever funding.

**Table 1 Land Acquisition Expenditures by Water Management Area**

Water Management Area	Acres	Dollars Expended
Perdido River	6,044	\$13,535,865
Escambia River	697	\$ 1,231,692
Yellow River	205	\$ 630,046
Choctawhatchee River	4,269	\$ 6,162,350
Econfina Creek	3,663	\$ 7,977,220
Apalachicola River	1,912	\$ 3,981,132
Chipola River	2,440	\$ 5,922,785
St. Marks River	830	\$ 1,862,050
Ochlockonee River	1,529	\$ 1,951,197
<b>TOTAL</b>	<b>21,589</b>	<b>\$43,254,337</b>

Since the inception of the District’s land acquisition program, the goal has been to protect the floodplains of our major rivers and creeks. To date, 225,931 acres have been protected for water resource purposes through the land acquisition efforts of the District either in fee simple or through conservation easements.

### Acquisition Planning

The District employs a watershed approach to select and prioritize the water resources and natural systems within the groundwater contribution areas and major river basins of northwest Florida. Primary

among the considerations in this process are how specific floodplain or buffer areas help satisfy the District’s water resources and natural system protection objectives; the availability of funds; the seller’s willingness; how different areas fit into the District’s land management strategy; and the size, accessibility, and overall condition of each property. Recommendations from interest groups, landowners, local governments, agency representatives, and other interested parties are given full consideration in the acquisition process. Existing water management areas (WMAs) include the Perdido River, Escambia River, Blackwater River, Yellow River, Garcon Point, Choctawhatchee River/Holmes Creek, Econfina Creek, Chipola River, and Apalachicola River.

Subject to receiving funding, the District’s acquisition efforts this year will focus on the purchase of fee simple or less than fee simple (conservation easements) projects that protect the quality and quantity of water that flows into and out of springs. The District’s acquisition efforts will focus on acquiring fee or less than fee simple interest in properties located within the Jackson Blue, Chipola, Econfina, and Wakulla springs and Spring Creek Spring Group groundwater contribution areas.

In developing the annual update, District staff review projects proposed by DEP’s Division of State Lands to minimize redundancy and facilitate an efficient and mutually supportive land-acquisition effort.

### Approved Acquisition Areas

The approved acquisition areas listed below are not presented on a priority basis. For each of these waterbodies, it is desirable to acquire both the floodplain and a natural buffer zone to provide further water resource protection.

**Table 2 Approved Acquisition Areas**

<b>Rivers &amp; Creeks Originating In Florida</b>	<b>Rivers and Creeks Originating Outside Florida</b>	<b>Springs</b>	<b>Lakes &amp; Ponds</b>	<b>Other Ecosystems, Basins and Buffers</b>
Wakulla River	Apalachicola River	St. Marks River near Natural Bridge	Lake Jackson	Southwest Escambia County Ecosystem
St. Marks River	Lower Apalachicola River Wetland	Spring Lake Spring Group Area	Sand Hill Lakes	Garcon Point Ecosystem
Econfina Creek and other Tributaries of Deer Point Lake	Chipola River	Bosel Springs Chipola River Springs Waddell Springs		West Bay Buffer
Lafayette Creek	Choctawhatchee River including Holmes Creek	Cypress Spring		Sandy Creek Basin
	Escambia River	Hays Springs		Apalachicola Bay and St. Vincent Sound Buffer
	Blackwater River including Juniper, Big Coldwater, and Coldwater creeks	Econfina Creek Springs		
	Ochlockonee River and its major tributaries	Jackson Blue Spring		
	Yellow and Shoal rivers	Wakulla Spring		
	Perdido River and Bay			

### Groundwater Recharge Areas

Such lands may be designated by the District as recharge areas for the Floridan, sand-and-gravel, and other important aquifers and may be acquired in fee simple or less than fee simple.

Donated Lands

The District may accept donations of lands within its major acquisition areas if those lands are necessary for water management, water supply, and the conservation and protection of land and water resources.

Exchange Lands

The District may exchange lands it has acquired under the Florida Forever program for other lands that qualify for acquisition under the program. The District’s Governing Board establishes the terms and conditions it considers necessary to equalize values of the exchange properties. In all such exchanges, the District’s goal will be to ensure there is a net positive environmental benefit.

Mitigation Acquisitions

Under Florida law, unavoidable losses of natural wetlands or wetland functions require “mitigation” through the acquisition or restoration of other nearby wetlands. The District is often the recipient of such lands in the form of donations and also serves as the mitigation agent for the Florida Department of Transportation. Whenever possible, the District attempts to acquire mitigation lands contiguous to its existing ownership, but since wetland type and proximity to the original wetland impact are often paramount, the District will on occasion acquire or manage isolated tracts.

**Surplus Lands**

Section 373.089, F.S., allows the Governing Board of the District to sell (surplus) lands or interests or rights in lands to which the District has acquired title or to which it may hereafter acquire title. Any lands, or interests or rights in lands, determined by the Governing Board to be surplus may be sold by the District at any time for the highest price, but in no case shall the selling price be less than the appraised value.

District staff conducted an evaluation of all District lands to determine if there were any parcels appropriate for surplus. The parcels recommended for surplus were small, non-contiguous, isolated tracts. The following tract was declared surplus by the District’s Governing Board in 2013.

**Table 3 District Surplus Lands**

WMA	Acres	County	Acquired Date	Status
Escambia River	115	Escambia	April 26, 1994	For Sale

**Note to Landowners**

The District’s land acquisition process only involves willing sellers and is usually initiated by landowners offering parcels for sale.

This plan includes a number of areas the District has identified for potential purchase. If your property is included in any of our acquisition areas or maps and you do not desire to sell your land to the District, Florida Statutes require the District to remove your property from the acquisition plan at the earliest opportunity. Please contact the Division of Asset Management at (850) 539-5999 at any time if you wish to remove your property from possible purchase consideration. The District will maintain a list of such requests and annually adjust its acquisition plan accordingly.

## **Less Than Fee Methods of Land Protection**

In less than fee purchases, the District attempts to acquire only those rights in property (i.e., development and land use conversion rights) that are needed to accomplish specific resource protection goals. Such less than fee methods can provide a number of public benefits. First, acquisition funding can be conserved, thereby enabling the protection of more land with limited funds. Also, the property continues in private ownership and thus may remain on local property tax rolls. Moreover, the District does not incur the long-term costs of land management since the property's management and maintenance remains the landowner's responsibility. Not all properties are suitable for less than fee acquisition, but the potential benefits make these kinds of transactions the preferred alternative to the District's typical fee-simple land purchases.

## **DEP Florida Forever Priority List**

The Florida Forever Priority List can be found at:

<https://floridadep.gov/lands/environmental-services/content/florida-forever>

## **Critical Wetlands**

The 2022 Florida Legislature enacted a law that requires water management districts to annually identify properties that may be classified as "critical wetlands" for potential acquisition using Florida's Land Acquisition Trust Fund (LATF). In response, the District conducted a systematic review of properties throughout the Florida Panhandle to identify wetland properties considered critically important to protecting or restoring wetlands and water resource values and functions. Letters were sent to the owners of the identified priority parcels, as required by section 373.036, F.S., and the District consulted with affected local governments. An initial list of critical wetlands was approved by the Governing Board on September 12, 2024. To date, the District has not received any LATF funding to purchase critical wetlands. Additional information may be found in the FY 2024-25 Strategic Water Management Plan (<https://nwfwater.com/Data-Publications/Reports-Plans/Water-Management-Plans>).

## **Florida Forever Goals and Numeric Performance Measures**

As outlined in Chapter 18-24, F.A.C., the District is required to report on the goals and measures for lands to be acquired under the Florida Forever program. The following page summarizes the goals and measures applicable to the Northwest Florida Water Management District.

## ***Florida Forever Goals and Numeric Performance Measures***

---

Reported as of October 1, 2024

### Rule No. 18-24.0022

(2)(d)1. For proposed acquisitions, see the (Florida Forever) Water Management District Work Plan Annual Report in the Consolidated Annual Report.

(2)(d)2. For proposed acquisitions for water resource development projects, see the (Florida Forever) Water Management District Work Plan Annual Report in the Consolidated Annual Report

(3)(a)2. Refer to (Florida Forever) Capital Improvement Work Plan of the Consolidated Annual Report for funded capital improvements identified in SWIM, stormwater, or restoration plans.

(3)(a)3. NFWFMD lands to be treated for upland invasive, exotic plants = <5,000 acres

The District has not conducted surveys to identify the spatial distribution of invasive exotic plant infestation on District lands. It is known that invasive plant problems exist at varying levels on some District lands, and staff treat with herbicide as needed.

(3)(b) New water to be made available through Florida Forever funding for water resource development - Major water resource development accomplishment has been provided by additions to Econfina Creek Water Management Area (1992-2009). Additionally, Florida Forever funding has in the past contributed to the construction of a 750,000-gallon reuse storage facility for the City of Freeport to serve a 0.6 MGD reuse water service area (project completed in 2009). Funding for water supply development, including construction of water reuse facilities, is primarily provided through State alternative water supply funding, the Water Protection and Sustainability Program Trust Fund, NFWFMD General Fund, and local funding. See the NFWFMD Five-Year Water Resource Development Work Program report and Consolidated Annual Report.

(4)(a)1. NFWFMD lands that are in need of and are undergoing restoration, enhancement, or management by the District.

In need of restoration, enhancement, and management = 435 acres  
Undergoing restoration or enhancement = 1,406 acres  
Restoration completed = 32,480 acres  
Restoration maintenance = 32,480 acres

(4)(a)3. Refer to section 3, (Florida Forever) Capital Improvement Work Plan of the Consolidated Annual Report for capital improvements identified in SWIM, stormwater, or restoration plans.

(4)(a)6. NFWFMD lands under upland invasive, exotic plant maintenance control = <10,000 acres

(4)(b) Refer to Water Projects in the Five-Year Water Resource Development Work Program of the Consolidated Annual Report for quantity of new water made available through regional water supply plans.

(4)(c) See (Florida Forever) Land Acquisition Work Plan (Table 6) of the Consolidated Annual Report for resource-based recreation facilities by type.



## **Land Acquisition Projects**

The Florida Forever Act, particularly s. 373.199(3) F.S., identifies information that must be included for each Florida Forever Project. Some of the required information is relatively general and applicable to all projects. To reduce the redundancies of this plan, general information is provided separately as part of the District's Five-Year Plan for the Florida Forever Program. Specific land acquisition projects are individually identified and detailed information specific to the project is provided in the following pages.

Figure 1 Proposed Land Acquisition Areas, 2025

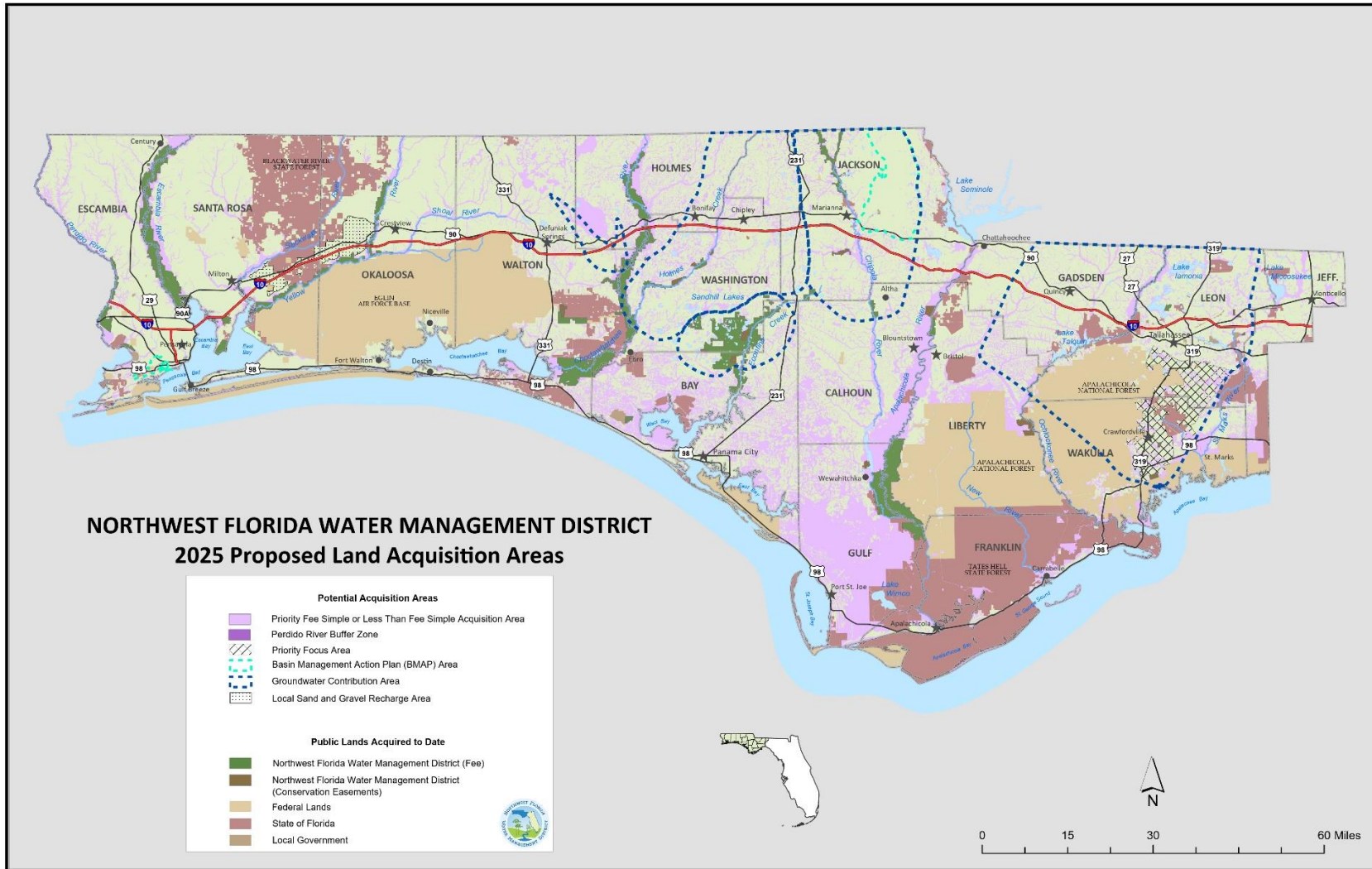
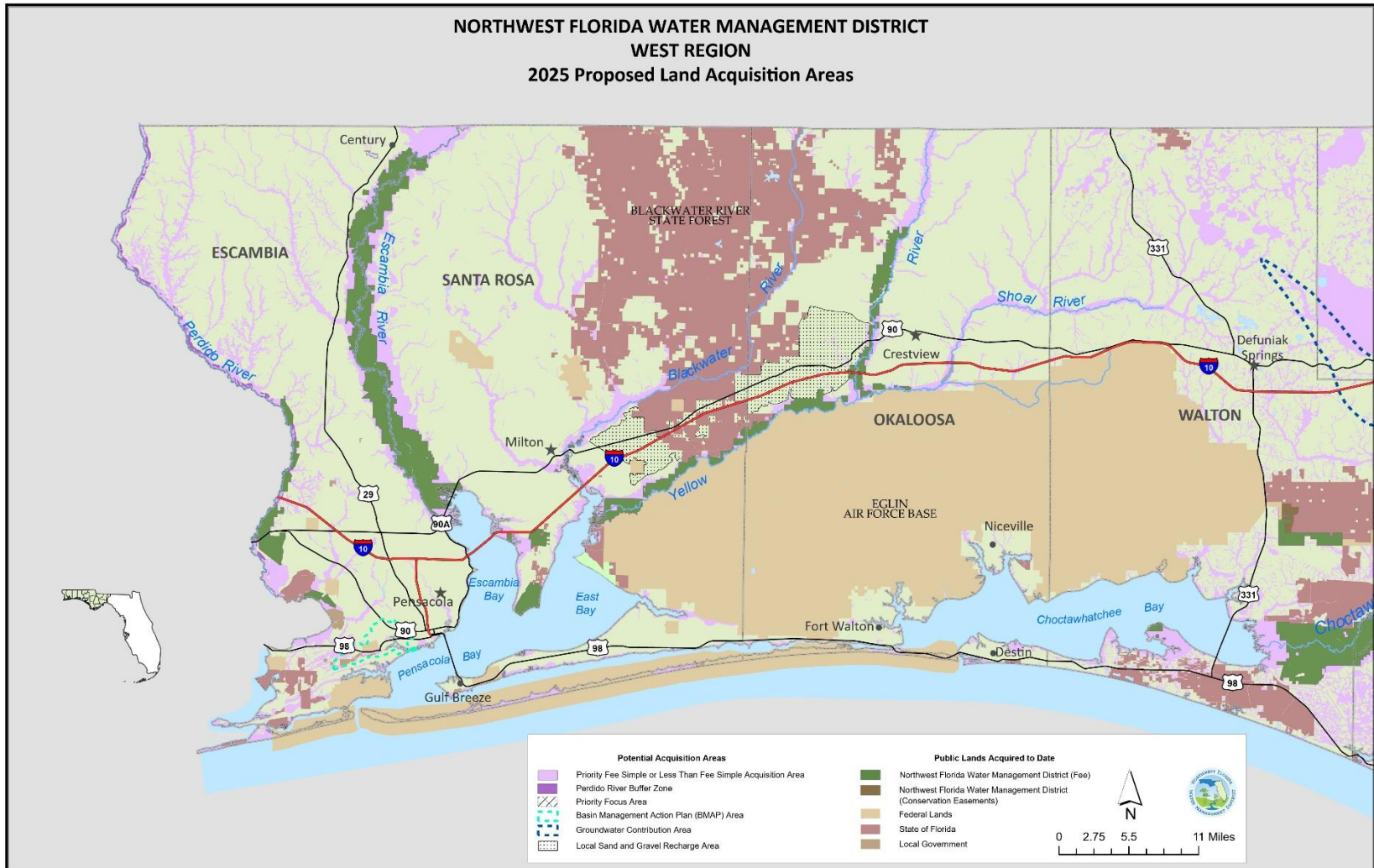


Figure 2 Proposed Land Acquisition Areas, 2025, West Region



## ***FLORIDA FOREVER LAND ACQUISITION PROJECT***

### **Perdido River and Bay Basin**

The Perdido River serves as the state line, separating Florida from Alabama (see Figure 2). The Perdido River has been designated an Outstanding Florida Water and Special Water system, a canoe trail, and a recreation area. The upper part of the river is a shifting sand river system, unique to portions of northwest Florida, south Alabama, southern Mississippi, and eastern Louisiana, while the lower end of the river is characteristic of a blackwater stream. The District owns 6,261 acres in fee simple and four acres in less than fee between the Perdido River and Bay.

The project area is mostly undeveloped and contains a diverse list of species. Acquisition of any floodplain area along the Perdido River, whether in fee or less than fee, will enhance water quality protection efforts for the Perdido Bay system.

Purchases within the Priority Fee Simple or Less than Fee Simple Acquisition Area will be concentrated on floodplain parcels along the river, around the river mouth, and designated tributaries.

The Perdido Bay is an estuarine system which receives fresh water from the Perdido River. Subsidiary embayments within the Perdido Bay estuary include Tarkiln Bay, Arnica Bay, Wolf Bay, Bayou La Launch, and Bayou St. John. Perdido Key separates Perdido Bay, Tarkiln Bay, Arnica Bay, Bayou La Launch, and Bayou St. John from the Gulf of Mexico. Big Lagoon adjoins Perdido Bay to the east, separating it from Pensacola Bay. Currently, the District owns 810.19 acres along Perdido Bay.

Purchases within the Priority Fee Simple or Less than Fee Simple Acquisition Area will be concentrated on floodplain parcels adjacent to the bay which can enhance water quality protection.

### **Public Access**

All District conservation lands are available for public use. Such uses include fishing, hunting, camping, hiking, boating, swimming, and other recreational activities. Access issues are addressed on a parcel-by-parcel basis.

### **Land Acquisition**

Sufficient lands have been identified to allow for a flexible implementation strategy over at least the next five years. The timing of any given acquisition will depend upon such considerations as: availability of funds, Governing Board policy, threats to the resource, availability of willing sellers, tract size, general market conditions, and available staff resources.

## ***FLORIDA FOREVER LAND ACQUISITION PROJECT***

### **Southwest Escambia County Ecosystem**

Several major estuarine drainages, including Jones Swamp, Bayou Grande, Big Lagoon, and Tarkiln Bay, intersect in southwest Escambia County (see Figure 2). These, in turn, comprise portions of the Pensacola and Perdido bay watersheds. The Priority Fee Simple or Less than Fee Simple Areas border a major urban area containing residential and commercial development.

Protecting the ecological integrity of this area is important to the quality of water resources in the Pensacola and Perdido bay systems. Acquisition will help limit non-point source pollution and untreated stormwater runoff by preventing channelization. Wetlands and upland buffers will also be preserved, and riparian buffer zones will be maintained. Additionally, public access will be improved, and fish, wildlife, and estuarine productivity will be protected.

This acquisition is consistent with a number of major initiatives designed to protect environmental and other public resources in the region. These include water quality treatment systems, acquisition programs for the Jones Swamp Wetland Preserve and the Perdido Pitcher Plant Prairie, and efforts to prevent encroachment on NAS Pensacola. Together with nearby state parks, these acquisitions will provide for a major environmental reserve and greenway system within a rapidly urbanizing area.

### **Local Sand-and-Gravel Recharge Area**

Designated area has groundwater recharge potential.

### **Public Access**

All District conservation lands are available for public use. Such uses include fishing, hunting, camping, hiking, boating, swimming, and other recreational activities. Access issues are addressed on a parcel-by-parcel basis.

### **Land Acquisition**

Sufficient lands have been identified to allow for a flexible implementation strategy over at least the next five years. The timing of any given acquisition will depend upon such considerations as: availability of funds, Governing Board policy, threats to the resource, availability of willing sellers, tract size, general market conditions, and available staff resources.

## ***FLORIDA FOREVER LAND ACQUISITION PROJECT***

### **Escambia River Basin**

Beginning at the confluence of the Conecuh River and Escambia Creek above the Florida-Alabama border and discharging into Escambia Bay, the Escambia River corridor (see Figure 2) contains a rich diversity of plant and animal species, as well as many rare fish and waterfowl. The Escambia River basin is broad and well-drained in the upper reaches, and swampy below Molino, Florida. While the overall water quality is considered good, many point and non-point pollution sources empty into the river. Currently, the District owns 35,413 acres in fee and 19 acres in less than fee along the river.

Purchases within the Priority Fee Simple or Less than Fee Simple Acquisition Area will be concentrated on floodplain parcels around the river mouth and designated tributaries.

### **Public Access**

All District conservation lands are available for public use. Such uses include fishing, hunting, camping, hiking, boating, swimming, and other recreational activities. Access issues are addressed on a parcel-by-parcel basis.

### **Land Acquisition**

Sufficient lands have been identified to allow for a flexible implementation strategy over at least the next five years. The timing of any given acquisition will depend upon such considerations as: availability of funds, Governing Board policy, threats to the resource, availability of willing sellers, tract size, general market conditions, and available staff resources.



## ***FLORIDA FOREVER LAND ACQUISITION PROJECT***

### **Garcon Point Ecosystem**

The Priority Fee Simple or Less Than Fee Simple acquisition area contains a portion of the Garcon Point Peninsula, which borders Pensacola, Escambia, East, and Blackwater bays (see Figure 2). The project area is largely undeveloped and includes a variety of natural communities that are in good to excellent condition. The entire tract provides considerable protection to the water quality of the surrounding estuary, as well as harboring a number of rare and endangered species.

The emergent estuarine marsh that borders several miles of shoreline within the project is an important source of organic detritus and nutrients and serves as a nursery for many of the species found in Pensacola Bay. These wetlands function as stormwater filtration and a storm buffer area, as well as providing erosion controls to the neighboring uplands. A minimum of 13 endangered or threatened species are known to live in the region including the recently listed federally endangered reticulated flatwoods salamander. The northern wet prairie portion is known to be an outstanding pitcher plant habitat.

Purchases within the Priority Fee Simple or Less than Fee Simple Acquisition Area will be concentrated on floodplain parcels adjacent to Escambia and East Bays. Currently the District owns 3,245 acres on Garcon Point.

### **Public Access**

All District conservation lands are available for public use. Such uses include fishing, hunting, camping, hiking, boating, swimming, and other recreational activities. Access issues are addressed on a parcel-by-parcel basis.

### **Land Acquisition**

Sufficient lands have been identified to allow for a flexible implementation strategy over at least the next five years. The timing of any given acquisition will depend upon such considerations as: availability of funds, Governing Board policy, threats to the resource, availability of willing sellers, tract size, general market conditions, and available staff resources.



## ***FLORIDA FOREVER LAND ACQUISITION PROJECT***

### **Blackwater River Basin**

Originating in the Conecuh National Forest in Alabama, the Blackwater River (see Figure 2) has a large portion of its Florida watershed further protected by the Blackwater River State Forest. In all, nearly 50 miles of the river corridor is remote and undeveloped. As a result, the Blackwater River is considered one of Florida's best-preserved waterways. Currently the District owns 381 acres along the Blackwater River immediately north and south of Milton in Santa Rosa County.

The Priority Fee Simple or Less than Fee Simple Acquisition Area includes considerable floodplain. Purchases within the Priority Fee Simple or Less than Fee Simple Acquisition Area will be concentrated on these parcels. In addition, purchase of lands north and northwest of Eglin Air Force Base (AFB), along the I-10 corridor, would provide approximately 52,000 acres of land that has the potential for future water resource development to supplement the constrained potable water sources in southern Santa Rosa and Okaloosa counties. Acquisitions in this area are consistent with the District's Regional Water Supply Plan for Okaloosa, Santa Rosa, and Walton counties to protect future supply sources.

### **Local Sand-and-Gravel Recharge Area**

In Escambia and Santa Rosa counties, the sand-and-gravel aquifer is the principal source of potable water for public supply. The sand-and-gravel aquifer is unconfined or poorly confined, making it particularly susceptible to contamination by surface land uses. Land acquisition along the I-10 corridor between the Yellow and Blackwater rivers in Santa Rosa County would protect recharge areas that are important for future water supply sources. This area encompasses approximately 52,000 acres.

### **Public Access**

All District conservation lands are available for public use. Such uses include fishing, hunting, camping, hiking, boating, swimming, and other recreational activities. Access issues are addressed on a parcel-by-parcel basis prior to acceptance.

### **Land Acquisition**

Sufficient lands have been identified to allow for a flexible implementation strategy over the next five years or more. The timing of any given acquisition will depend upon such considerations as: availability of funds, Governing Board policy, threats to the resource, availability of willing sellers, tract size, general market conditions, and available staff resources.

## ***FLORIDA FOREVER LAND ACQUISITION PROJECT***

### **Yellow and Shoal River Basin**

The Yellow River has its headwaters in Conecuh National Forest in Alabama and forms the northern border of Eglin AFB across much of eastern Santa Rosa and western Okaloosa counties (see Figure 2). The proposed acquisitions would bring floodplain of the Yellow River in Florida under public ownership. Included in the project is a segment of the lower Shoal River, the largest tributary to the Yellow River. The Priority Fee Simple or Less than Fee Simple Acquisition Area will be given to tracts containing considerable floodplain. Currently the District owns 16,553 acres along the Yellow River.

Although the Yellow and Shoal rivers exhibit good overall water quality, both are fed largely by rainwater runoff and are thus susceptible to pollution from land use activities. The Priority Fee Simple or Less than Fee Simple Acquisition Area would provide water quality protection beginning at the Alabama border. Purchase of lands north and northwest of Eglin AFB, along the I-10 corridor, would provide approximately 52,000 acres of land that has the potential for future water resource development to supplement the strained potable water sources in southern Santa Rosa and Okaloosa counties. Acquisitions in this area are consistent with the District's Regional Water Supply Plan for Okaloosa, Santa Rosa, and Walton counties to protect future supply sources.

### **Local Sand-and-Gravel Recharge Area**

The sand-and-gravel Aquifer is unconfined or poorly confined, making it particularly susceptible to contamination by land uses. Land acquisition along the I-10 corridor between the Yellow and Blackwater rivers in Okaloosa County would protect recharge areas that are important for future water supply sources. This area encompasses approximately 52,000 acres.

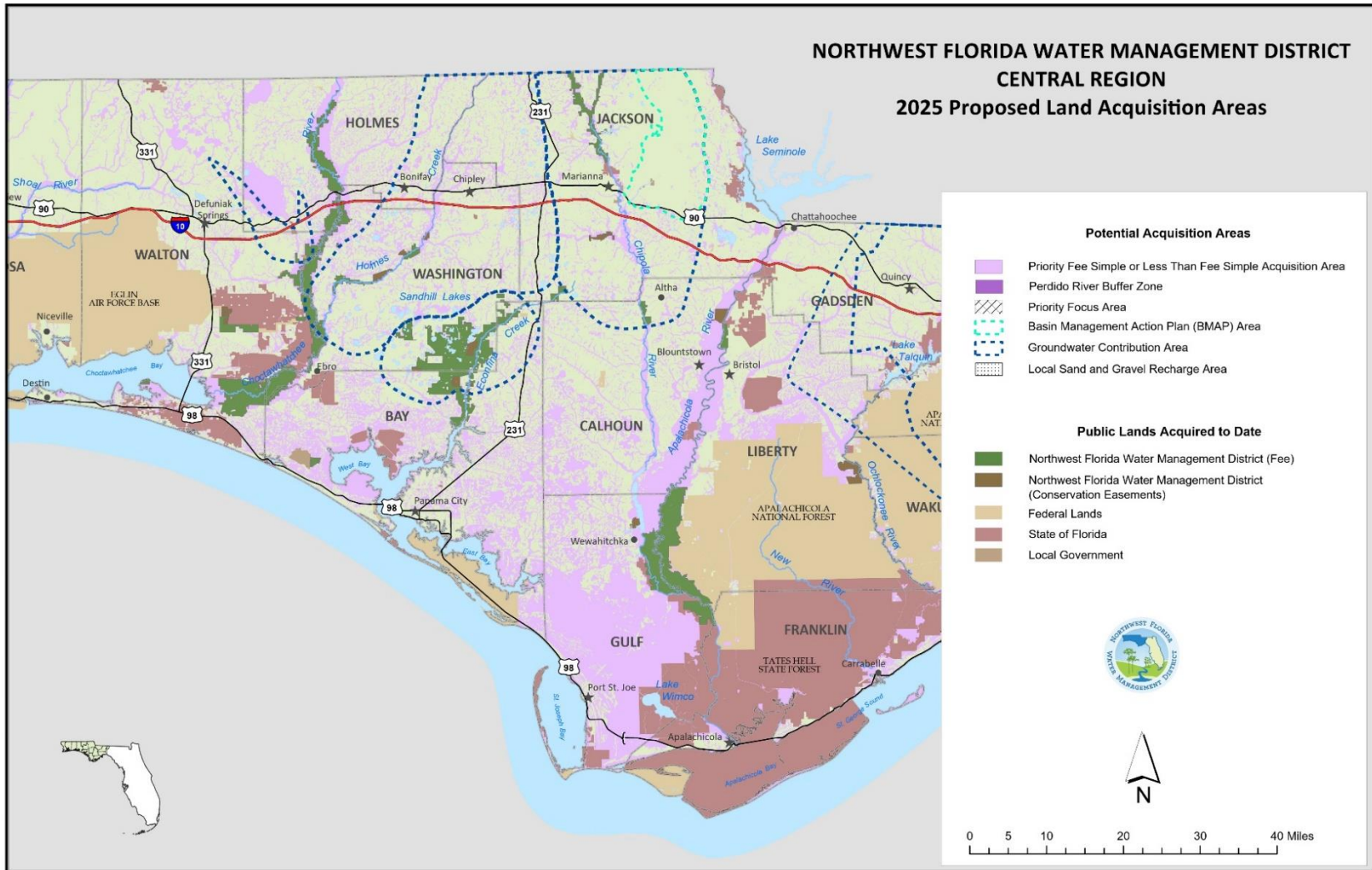
### **Public Access**

All District conservation lands are available for public use. Such uses include fishing, hunting, camping, hiking, boating, swimming, and other recreational and educational activities. Access issues are addressed on a parcel-by-parcel basis.

### **Land Acquisition**

Sufficient lands have been identified to allow for a flexible implementation strategy over at least the next five years. The timing of any given acquisition will depend upon such considerations as: availability of funds, Governing Board policy, threats to the resource, availability of willing sellers, tract size, general market conditions, and available staff resources.

Figure 3 Proposed Land Acquisition Areas, 2025, Central Region



## ***FLORIDA FOREVER LAND ACQUISITION PROJECT***

### **Lafayette Creek**

Originating in south central Walton County, the Lafayette Creek drainage basin is located northeast of Freeport (see Figure 3). The main stem of the creek begins about seven miles east of Freeport and runs due west for about six miles before it turns south and empties into LaGrange Bayou/Choctawhatchee Bay. Purchases with the Priority Fee Simple or Less than Fee Simple Acquisition Area will protect a portion of Magnolia and Wolf creeks, both of which are significant tributaries to Lafayette Creek, as well as protect many diverse natural communities and habitat types. Currently, the District owns 3,160 acres along the creek, including 420 acres for DOT mitigation purposes.

### **Public Access**

All District conservation lands are available for public use. Such uses include fishing, hunting, camping, hiking, boating, swimming, and other recreational activities. Access issues are addressed on a parcel-by-parcel basis.

### **Land Acquisition**

Sufficient lands have been identified to allow for a flexible implementation strategy over at least the next five years. The timing of any given acquisition will depend upon such considerations as: availability of funds, Governing Board policy, threats to the resource, availability of willing sellers, tract size, general market conditions, and available staff resources.

## ***FLORIDA FOREVER LAND ACQUISITION PROJECT***

### **Choctawhatchee River and Holmes Creek Basin**

Originating in Alabama and flowing into Choctawhatchee Bay, the Choctawhatchee River/Holmes Creek basin encompasses the second largest floodplain in the state (see Figure 3). Approximately 3,133 square miles of the watershed is in Alabama and 2,052 square miles is in Florida. The river is 170 miles long with about 88 miles in Florida. Although the river basin exhibits localized water quality problems, primarily due to agricultural land use in the upper basin, the overall water quality is considered good. The river basin encompasses 57 springs on Holmes Creek and a variety of habitats including bottomland hardwood forests, marshes, and Tupelo-Cypress swamps.

Due to the river corridor's undeveloped nature, the basin provides habitat for a variety of native wildlife, including several endangered plant and animal species. The river also serves as a breeding and migratory area for both the Alligator Gar and the Gulf Sturgeon. The District currently owns 63,735 acres along the river, creek, and bay in fee and less than fee. Purchases within the Priority Fee Simple or Less than Fee Simple Acquisition Area will be concentrated on parcels containing floodplain along the river and designated tributaries such as Holmes Creek.

### **Groundwater Contribution Area**

In addition, a portion of the Choctawhatchee River and all of Holmes Creek is captured within the Groundwater Contribution Area. Properties within this contribution area may be considered as a potential acquisition, especially those properties improving the quality or quantity of water for springs.

### **Public Access**

All District conservation lands are available for public use. Such uses include fishing, hunting, camping, hiking, boating, swimming, and other recreational activities. Access issues are addressed on a parcel-by-parcel basis.

### **Land Acquisition**

Sufficient lands have been identified to allow for a flexible implementation strategy over at least the next five years. The timing of any given acquisition will depend upon such considerations as: availability of funds, Governing Board policy, threats to the resource, availability of willing sellers, tract size, general market conditions, and available staff resources.

## ***FLORIDA FOREVER LAND ACQUISITION PROJECT***

### **West Bay Buffer**

West Bay is the westernmost embayment of the St. Andrew Bay estuary (see Figure 3). The bay supports notable shellfish and seagrass communities, important fisheries, and other environmental and economic resources. The West Bay watershed is characterized by extensive pine flatwoods, as well as hardwood forests, cypress wetlands, mixed-forested wetlands, freshwater marshes, wet prairie, and other wetlands. Salt marshes, inland forested wetlands, and associated upland communities are especially prominent in several areas, including the Breakfast Point peninsula and other lands adjacent to the Burnt Mill and Crooked Creek tributaries.

Like other estuaries, the bay is vulnerable to impacts associated with intensive residential and commercial development. Potential impacts include the long-term degradation as a result of non-point source pollution, as well as habitat loss and fragmentation. Acquisitions within the Priority Fee Simple or Less than Fee Simple Acquisition Area would help prevent such degradation by preserving intact and extensive ecosystem of forests, scrub, salt marshes, and freshwater wetlands. Preserving the associated wetland and upland communities in the vicinity of the bay protects water quality by providing a substantial riparian buffer and maintaining the natural hydrology in the vicinity of the bay. The District currently owns approximately 719 acres in the vicinity of the West Bay Buffer.

In addition to providing for public use and water resource protection, this acquisition will be consistent with several ongoing initiatives, including the Bay-Walton Sector Plan. These initiatives also include efforts to restore seagrass communities in the bay and to improve the treatment and management of domestic wastewater.

### **Public Access**

All District conservation lands are available for public use. Such uses include fishing, hunting, camping, hiking, boating, swimming, and other recreational activities. Access issues are addressed on a parcel-by-parcel basis.

### **Land Acquisition**

Sufficient lands have been identified to allow for a flexible implementation strategy over at least the next five years. The timing of any given acquisition will depend upon such considerations as: availability of funds, Governing Board policy, threats to the resource, availability of willing sellers, tract size, general market conditions, and available staff resources.

## ***FLORIDA FOREVER LAND ACQUISITION PROJECT***

### **Econfina Creek**

Econfina Creek is the major contributor to Deer Point Lake, which serves as the public water supply for Bay County, including Panama City, Panama City Beach, and neighboring communities (see Figure 3). Properties along the creek contain several spring-run streams, which are imperiled biological communities. The slope forest communities that border considerable lengths of the creek contain some of the highest species diversity encountered in Florida. The project area features high rolling sandhill habitat, steephead ravines, and numerous sandhill upland lakes. Much of the sand hills area is of excellent quality, with a nearly intact ground cover of wiregrass and dropseed. At least 18 species of rare or endangered plants inhabit the sand hills area. The District currently owns 44,469 acres in fee and less than fee, including the 2,155-acre Sand Hill Lakes Mitigation Bank. Purchases will be concentrated on parcels within the Groundwater Contribution Area as well as purchases that improve the quality or quantity of water for springs.

### **Groundwater Contribution Area**

The upper portion of the acquisition project is a significant groundwater contribution area of the Floridan Aquifer and properties within this contribution area may be considered as a potential acquisition, especially those properties improving the quality and quantity of water for springs. The majority of the acreage purchased by the District and targeted for future purchase is one of the most important groundwater contribution areas for the Floridan Aquifer in northwest Florida. Recharge rates in the area have been estimated at 25 to 40 inches per year, and this recharge drives the spring flows along Econfina Creek, the largest tributary of the Deer Point Lake Reservoir. The reservoir currently provides approximately 50 million gallons per day for residential, commercial, and industrial water uses in Bay County.

### **Public Access**

All District conservation lands are available for public use. Such uses include fishing, hunting, camping, hiking, boating, swimming, and other recreational activities. Access issues are addressed on a parcel-by-parcel basis.

### **Land Acquisition**

Sufficient lands have been identified to allow for a flexible implementation strategy over at least the next five years. The timing of any given acquisition will depend upon such considerations as: availability of funds, Governing Board policy, threats to the resource, availability of willing sellers, tract size, general market conditions, and available staff resources.

## ***FLORIDA FOREVER LAND ACQUISITION PROJECT***

### **Sandy Creek Basin**

Sandy Creek is a major tributary of East Bay, the easternmost embayment of the St. Andrew Bay estuary (see Figure 3). The creek's basin is characterized by extensive wet pine flatwoods, as well as hardwood forests, salt marshes, cypress wetlands, mixed forested wetlands, freshwater marshes, wet prairie, and other wetlands. Salt and freshwater marshes, inland forested wetlands, and associated upland communities are especially prominent along the creek and its tributaries.

Preservation of the Sandy Creek basin will protect a major tributary basin of East Bay. In doing so, it would preserve water quality and a mosaic of interconnected upland, wetland, stream, and estuarine habitats. Purchases within the Priority Fee Simple and Less than Fee Simple Acquisition Area would protect water quality by providing a substantial riparian buffer and maintaining natural hydrology.

### **Public Access**

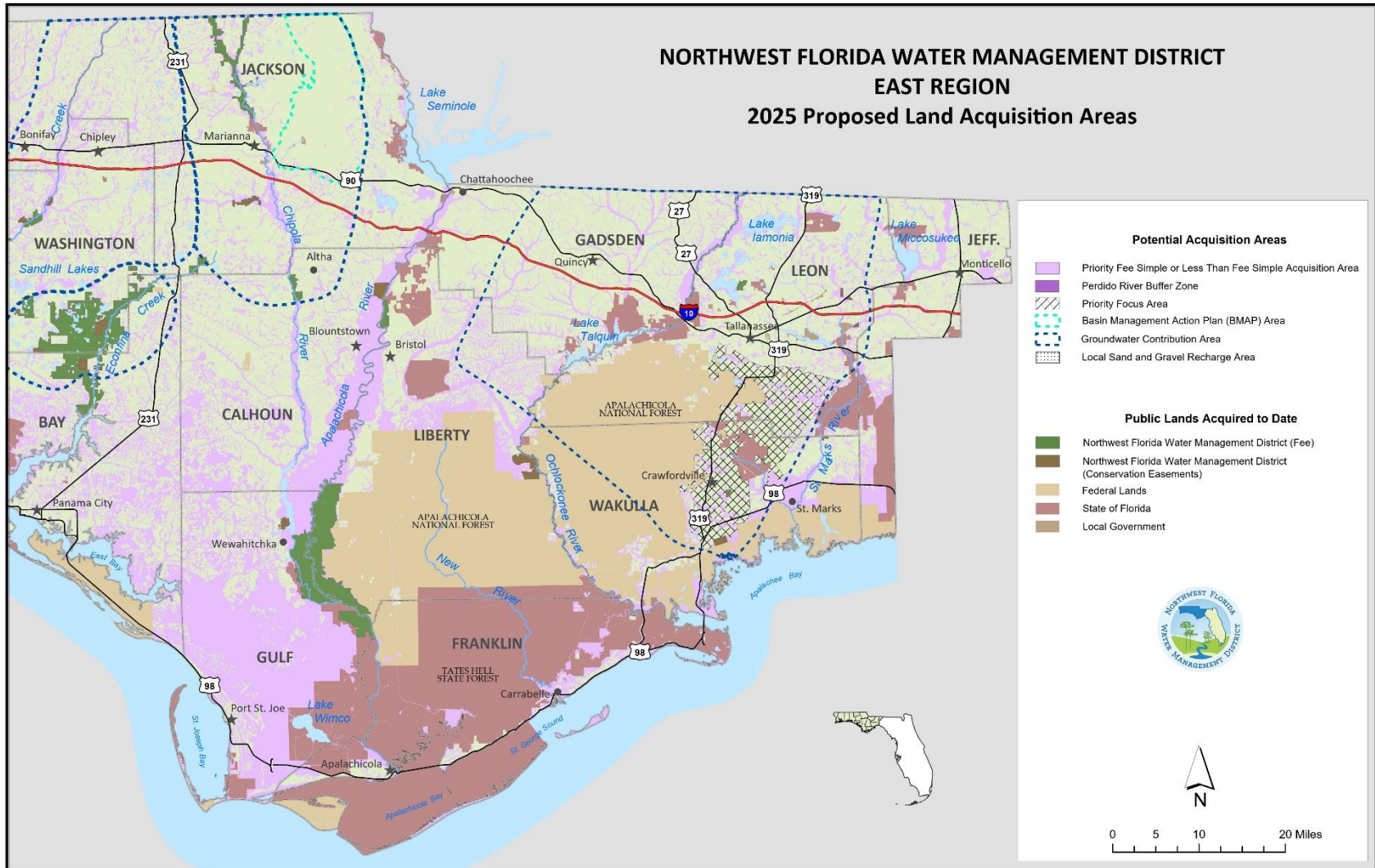
All District conservation lands are available for public use. Such uses include fishing, hunting, camping, hiking, boating, swimming, and other recreational activities. Access issues are addressed on a parcel-by-parcel basis.

### **Land Acquisition**

Sufficient lands have been identified to allow for a flexible implementation strategy over at least the next five years. The timing of any given acquisition will depend upon such considerations as: availability of funds, Governing Board policy, threats to the resource, availability of willing sellers, tract size, general market conditions, and available staff resources.



Figure 4 Proposed Land Acquisition Areas, 2025, East Region



## ***FLORIDA FOREVER LAND ACQUISITION PROJECT***

### **Chipola River Basin**

Areas along the Chipola River have been identified as a Priority Fee Simple or Less than Fee Simple Acquisition Area. The area lies in Calhoun and Jackson counties (see Figure 4). Acquisitions along the Chipola River will help protect miles of the riverbank. In 2009, the District acquired 1,377.76 acres in fee along the Middle Chipola River, including the “Look-N-Tremble” rapids. The District now owns a total of 9,094 acres in fee simple and holds a conservation easement on 1,011 acres in the Chipola River Basin.

An additional area is identified for Priority Fee Simple or Less than Fee Simple Acquisition along the Chipola River. Spring Lake Spring Group is located in central Jackson County. Acquisition of land in the Spring Lake Spring Group area with its numerous springs and tributaries which flow into the Chipola River will provide enhanced water resource protection to the area.

### **Jackson Blue Spring BMAP and Chipola Springs Groundwater Contribution Area (GWCA)**

The Jackson Blue Spring BMAP Area, east of the Chipola River, and the Chipola Springs GWCA, have been identified for fee simple or less than fee simple acquisition to provide protection to Blue Spring and the groundwater contribution area in Jackson County. Properties within this BMAP or contribution area may be considered as a potential acquisition, especially those properties improving the quality or quantity of water for springs.

### **Public Access**

All District conservation lands are available for public use. Such uses include fishing, hunting, camping, hiking, boating, swimming, and other recreational activities. Access issues are addressed on a parcel-by-parcel basis.

### **Land Acquisition**

Sufficient lands have been identified to allow for a flexible implementation strategy over at least the next five years. The timing of any given acquisition will depend upon such considerations as: availability of funds, Governing Board policy, threats to the resource, availability of willing sellers, tract size, general market conditions, and available staff resources.

## ***FLORIDA FOREVER LAND ACQUISITION PROJECT***

### **Apalachicola Bay and River**

Apalachicola Bay has been recognized as a resource of state, federal, and international significance. The bay has extensive fish and shellfish resources, and it supports noteworthy commercial and recreational fisheries and other recreational and economic activities. It has been designated an Outstanding Florida Water, a State Aquatic Preserve, and an International Biosphere Reserve. It includes the Apalachicola Bay National Estuarine Research Reserve and the St. Vincent National Wildlife Refuge (see Figure 4). State and federal agencies, as well as the District, have made extensive investments in acquiring and protecting lands throughout the basin.

Like other northwest Florida estuaries, Apalachicola Bay is vulnerable to impacts associated with development. Such potential impacts include the long-term effects of non-point source pollution and habitat loss and fragmentation. The proposed acquisition would help prevent such degradation by preserving the integrated forest and wetland community bordering St. Vincent Sound and Apalachicola Bay. The acquisition would limit new sources of pollution, prevent habitat loss and fragmentation, and protect the stability and integrity of littoral vegetation. The acquisition would also protect water quality by providing a substantial riparian buffer which would help prevent channelization from new impervious surfaces.

The Apalachicola River begins below Lake Seminole at the confluence of the Chattahoochee and Flint rivers (see Figure 4). It has the largest floodplain in the state and is widely regarded as one of the state's most important natural resources. The Apalachicola River supports the highly productive fishery in Apalachicola Bay. The District owns 36,823 acres of river floodplain and holds a conservation easement on 1,550 acres.

Major habitat types along the Apalachicola River include coastal marshes, freshwater marshes, flatwoods, and bottomland hardwood swamp. Water tupelo, Ogeechee tupelo, Bald cypress, Carolina ash, and Swamp tupelo have been identified in the floodplain, as well as numerous species of rare fish. Substantial additional acreage of the Apalachicola system is owned by other public agencies and private conservation organizations. Purchases will be concentrated on parcels within the Priority Fee Simple or Less than fee Simple Acquisition Area.

### **Public Access**

All District conservation lands are available for public use. Such uses include fishing, hunting, camping, hiking, boating, swimming, and other recreational activities. Access issues are addressed on a parcel-by-parcel basis.

### **Land Acquisition**

Sufficient lands have been identified to allow for a flexible implementation strategy over at least the next five years. The timing of any given acquisition will depend upon such considerations as: availability of funds, Governing Board policy, threats to the resource, availability of willing sellers, tract size, general market conditions, and available staff resources.

## ***FLORIDA FOREVER LAND ACQUISITION PROJECT***

### **Ochlockonee River Basin**

The Ochlockonee River originates in the coastal plain of Georgia and traverses parts of five Florida counties (see Figure 4). Water quality in the river is lowest when it enters Florida and generally improves as it flows closer to the Gulf of Mexico. The Ochlockonee is primarily fed by rainwater runoff and is therefore susceptible to pollution by land-use activities. Large parts of the watershed are publicly owned, including Joe Budd Wildlife Management Area, Lake Talquin State Forest, and Apalachicola National Forest.

The District's primary focus is to acquire less than fee rights on privately owned floodplain land separating existing federal and state properties. Public ownership of the erosion-prone lands bordering this usually fast-flowing river will reduce water quality degradation. The District presently has 3,675 acres in less than fee holdings in the area.

#### **Public Access**

All District conservation lands are available for public use. Such uses include fishing, hunting, camping, hiking, boating, swimming, and other recreational activities. Access issues are addressed on a parcel-by-parcel basis.

#### **Land Acquisition**

Sufficient lands have been identified to allow for a flexible implementation strategy over at least the next five years. The timing of any given acquisition will depend upon such considerations as: availability of funds, Governing Board policy, threats to the resource, availability of willing sellers, tract size, general market conditions, and available staff resources.

## ***FLORIDA FOREVER LAND ACQUISITION PROJECT***

### **St. Marks and Wakulla Rivers**

The Wakulla River originates at Wakulla Spring and flows south approximately 10 miles to join the St. Marks River at the town of St. Marks in Wakulla County (see Figure 4). The St. Marks River starts east of Tallahassee as a narrow stream, widens considerably below Horn Spring, and then disappears underground at Natural Bridge. After reemerging as a much stronger river at St. Marks Spring, it flows 11 miles to its confluence with the Wakulla River. The St. Marks River supports one of the most heavily used inshore saltwater fisheries in north Florida, the viability of which is largely dependent on the quality of freshwater flowing into the estuarine system. Both the Wakulla Springs State Park and the St. Marks National Wildlife Refuge are major refuges for numerous biological species. The District presently has 1,500 acres under less than fee acquisition and 131.49 acres in fee simple in the area.

#### **Wakulla Springs BMAP and Priority Focus Area**

Within the Upper Wakulla River and Wakulla Springs BMAP, the Priority Focus Area, east of the Apalachicola National Forest, has been identified for fee simple or less than fee simple acquisition to provide protection to the groundwater contribution area in Wakulla County. Properties within this contribution area may be considered as a potential acquisition, especially those properties improving the quality or quantity of water for springs.

#### **Land Acquisition**

Sufficient lands have been identified to allow for a flexible implementation strategy over at least the next five years. The timing of any given acquisition will depend upon such considerations as: availability of funds, Governing Board policy, threats to the resource, availability of willing sellers, tract size, general market conditions, and available staff resources.

## Florida Forever District Work Plan

As required by section 373.199(2), F.S., a District five-year work plan identifies and includes projects that further the goals of the Florida Forever Act (section 259.105, F.S.). These include priorities identified in approved Surface Water Improvement and Management (SWIM) plans, Save Our Rivers land acquisition lists, stormwater management and water resource development projects, springs and water body restoration projects, and other eligible activities that would assist in meeting the goals of Florida Forever.

From 2003 to 2008, the District provided grant funding to local governments for capital improvements that help implement SWIM projects, water resource development projects, and projects included within stormwater master plans. The program awarded more than \$23 million for 55 stormwater retrofit, restoration, and reuse projects. These grants leveraged significant additional funding, with more than \$52 million in local and other match funding allocated to the approved projects.

No significant appropriations of Florida Forever funds for capital improvements have been made since FY 2008-09. Table 4 identifies conceptual projects considered eligible for future Florida Forever capital improvement funding.

**Table 4 Projects Currently Eligible for Florida Forever Funding**

Project	Description	Status	Estimated Cost
Unpaved road sedimentation abatement	Unpaved road stabilization to reduce sedimentation and non-point source pollution; supports water quality improvement and habitat restoration objectives of SWIM plans for all District watersheds	Planning	TBD
Spring habitat restoration	Construction activities to restore riparian and aquatic habitats and shorelines associated with northwest Florida springs and to improve compatible public access	Planning	TBD
Stormwater retrofit facilities	Construction of cooperative stormwater retrofit projects, improving water quality and flood protection in accordance with approved SWIM plans	Planning	TBD
Reclaimed water storage facilities	Construction of reclaimed water storage facilities that contribute to water quality improvement and conservation and protection of water resources	Planning	TBD
Hydrologic, wetland, and shoreline restoration	Restoration of shoreline, wetland, and riparian habitats and hydrologic functions to improve water and habitat quality and to enhance public access, consistent with SWIM plans	Planning	TBD

Project specifics, as noted in section 373.199(2), (3), (4) and (5), F.S., will be provided in the future if projects are able to advance beyond the preliminary planning stage.

Future Florida Forever or special legislative appropriations, and funding from the Land Acquisition Trust Fund, federal grants, local governments, other local matching resources, and potentially other sources

may contribute to the implementation of these projects. Final approval of funding for any project requires District Governing Board approval.

## **Implementation of the FY 2023-2024 Work Plan**

### **Land Acquisition**

In 2024, the District surplused 10.03 acres, an isolated parcel in Washington County for \$32,600. The District also conducted an exchange of 137.77 acres for 158.98 acres and received a donation of a conservation easement on 55.50, acres both in Washington County.

### **Land Management**

In October 2018, Hurricane Michael severely impacted District lands and the District's Econfina Field Office. Recovery from Hurricane Michael became the highest priority for the District's land managers in the central and eastern land management regions. Recovery activities included initial damage assessments, securing of facilities and clearing debris for essential access, planning and implementing salvage timber harvests, clearing and repairing roads and firelines, clearing and repairing recreation sites, contracting for various hurricane recovery activities, and coordinating with FEMA. In addition to hurricane recovery, the District completed numerous land management activities during Fiscal Year 2023-2024. Management and restoration efforts included prescribed burns, native species planting, exotic plant and animal control efforts, as well as timber harvesting and thinning, across the District's 211,732 managed acres. In addition, the District maintains and improves public access and recreational amenities such as boat ramps, primitive campsites, and swimming and picnic areas. In the pages that follow, Table 5 and Table 6 provide additional information on specific land restoration activities completed during the year. The Fiscal Year 2024-2025 staffing and management budget by WMA can be found in Table 7.

To date, the District has conserved and protected 225,931 acres primarily through fee simple acquisition. These lands help promote wetland and floodplain functions, groundwater recharge, surface and groundwater quality, and fish and wildlife habitat, as well as protect natural systems. All District-owned lands are accessible to the public and are managed to provide public access and resource-based recreation.

District lands include the majority of the Escambia and Choctawhatchee river floodplains, as well as extensive lands along the Perdido, Blackwater, Yellow, Shoal, Apalachicola, and St. Marks/Wakulla rivers; Lafayette, Holmes, and Econfina creeks; and on Perdido Bay, Garcon Point, and Live Oak Point. In addition, the District manages and conducts habitat restoration and maintenance on Yellow River Ranch, Live Oak Point, Ward Creek West, and Sand Hill Lakes Mitigation Bank. The District has acquired the majority of the groundwater recharge area for springs that discharge into Econfina Creek and form a crucial component of the groundwater contribution to Deer Point Lake Reservoir.

### **Land Management Accomplishments (FY 2023-24)**

- } District contractors and in-house staff conducted prescribed burns for wildfire-fuel reduction on approximately 9,932 acres of District lands. In addition, vegetation management (herbicide) and habitat enhancements were conducted on 1,692 acres.
- } 5,049 camping permits were issued at 101 reservation-only sites on District lands.
- } 25 special resource area permits were issued on District property.







largest salt marsh system (approximately 1,000 acres) in Choctawhatchee Bay. The marsh has been subject to rapid erosion, with recent shoreline retreat averaging 3-4 feet per year (erosion has been halted where breakwaters have been completed)

- The District continued a stabilization and restoration project at Cypress Spring. Improvements include shoreline stabilization and enhancement, boardwalks and steps at entrance and exit points, and recreation amenities to prevent further degradation of the shoreline from recreational use. The project will improve water quality, restore the historical shoreline that has been impacted by erosion, and prevent destruction of habitat resulting from erosion and recreational use on the spring run and Holmes Creek.

**Table 5 Restoration, Enhancement, and Maintenance (2024)**

Water Management Area	Acres Burned					Acres Planted					Acres Harvested				Acres Treated
	Total	Fuel Reduction	Site Preparation	Growing Season	Wiregrass Propagation	Total	Upland/Wetland Wiregrass and Toothache Grass	Longleaf Pine	Slash Pine	Hardwood	Total	Restoration	Thinning	Habitat Restoration	For Invasive, Non-native or Off-site Species
Escambia River	111	111													134
Garcon Point															24
Blackwater River															
Yellow River	221	221													79
Perdido River	565	565													373
Choctawhatchee River	2,188	1,148		1,040						540		540			3,164
Econfina Creek	5,790	5,314	42	353	81	479		479		435	435				2,183
St. Andrews	605	455			150										25
Carter Restoration	1,359	589		770											
Ward Creek West															
Devils Swamp Restoration															
Chipola River	569	405	164			164		164							30
Apalachicola River						75		75							5
Lake Jackson															15
St. Marks/Wakulla Rivers															5
<b>Totals</b>	<b>11,408</b>	<b>8,808</b>	<b>206</b>	<b>2,163</b>	<b>231</b>	<b>718</b>		<b>718</b>		<b>975</b>	<b>435</b>	<b>540</b>			<b>6,037</b>

**Table 6 Access and Recreation Management (2024)**

Water Management Area	Picnic Areas	Day Use Sites	Parking Areas	Reserved Camp Sites	Boat, Canoe/Kayak Landings	Portolet Stations	Horse Trail	Canoe Trail	Hiking Trail	Nature Trail	Bike Trail	Access Road	Camp Site Reservations	General Purpose (boundary signs)	Information Signs on District Lands	Weather Pavilions and Wildlife Viewing Towers
	Number Maintained						Miles Maintained						Issued	Signs		Maintained
Escambia River	6	11	12	28	11	11			1	2		27	1,374	42	16	20
Garcon Point		2	2						3			1		12		
Blackwater River	1	3	3		2					1				5		1
Yellow River		3	3		3			50				36		26	4	
Perdido River	3	3	4	1	4	8	6	15	6	1	10	32	94	38	12	1
Choctawhatchee River	12	15	15	23	14	10		15	11			55	1,189		21	13
Econfina Creek (incl. Carter Tract)	15	22	22	36	14	15	56	22	18	2		269	1,914		42	49
Chipola River	1	4	5	3	2	2		6				11	243			1
Apalachicola River	2	2	2	10	2	1						8	235			13
Lake Jackson	1	2	2			1	7		10		7	9				2
St. Marks/Wakulla Rivers		1	2			1			3	3	3	3		30	4	1
<b>Totals</b>	<b>41</b>	<b>68</b>	<b>72</b>	<b>101</b>	<b>52</b>	<b>49</b>	<b>69</b>	<b>108</b>	<b>52</b>	<b>9</b>	<b>20</b>	<b>451</b>	<b>5,049</b>	<b>151</b>	<b>99</b>	<b>101</b>

**Table 7 Projected Funding, Staffing, and Resource Management for FY 2024-25**

Region	Water Management Area	Acres	Assigned Staff	Total Funding	Funding for Resource Management
Western	Escambia	35,413		\$84,165	\$84,165
	Escambia Conservation Easements	19		\$250	\$250
	Garcon Point	3,245		\$41,840	\$41,840
	Yellow	16,553		\$38,492	\$38,492
	Blackwater	381		\$5,096	\$5,096
	Perdido	6,261		\$143,950	\$143,950
	Perdido Conservation Easements	4		\$250	\$250
	<b>Western Region Total</b>	<b>61,876</b>	<b>4</b>	<b>\$314,043</b>	<b>\$314,043</b>
Central	Choctawhatchee	60,827		\$325,673	\$325,673
	Choctawhatchee/Holmes Conservation Easements	2,908		\$250	\$250
	Econfina	39,592		\$667,038	\$667,038
	St. Andrew/Econfina Conservation Easements	2,722		\$500	\$500
	Ward Creek West	719		\$0	\$0
	Carter Restoration	2,155		\$75,000	\$75,000
	<b>Central Region Total</b>	<b>108,923</b>	<b>7</b>	<b>\$1,068,461</b>	<b>\$1,068,461</b>
Eastern	Chipola	9,094		\$73,578	\$73,578
	Apalachicola	36,823		\$29,980	\$29,980
	Apalachicola/Chipola Conservation Easements	3,370		\$250	\$250
	Lake Jackson	539		\$76,100	\$76,100
	St. Marks/Wakulla Rivers	131		\$13,273	\$13,273
	St. Marks/Wakulla Rivers Conservation Easements	1,500		\$250	\$250
	Ochlockonee Conservation Easements	3,675		\$250	\$250
	<b>Eastern Region Total</b>	<b>55,132</b>	<b>2</b>	<b>\$193,681</b>	<b>\$193,681</b>
<b>Regional Totals</b>		<b>225,931</b>	<b>13</b>	<b>\$1,576,185</b>	<b>\$1,576,185</b>

**Projected Funding, Staffing, and Resource Management for FY 2024-25 (cont.)**

<b>Other Projects</b>	<b>Acres</b>	<b>Assigned Staff</b>	<b>Total Funding</b>	<b>Funding for Resource Management</b>
Land Management Administration		5	\$2,267,117	\$63,770
IT Initiative			\$661,911	\$368,173
Land Management Database			\$92,349	\$87,300
Brunson Landing Tract (owned by FDEP)	348		\$9,611	\$9,611
Washington County School Board Donation			\$327	\$327
Hurricane/Tornado Recovery			\$2,500,000	\$2,500,000
Cypress Spring Recreation Area			\$36,217	\$36,217
<b>Grand Total</b>	<b>226,279</b>	<b>18</b>	<b>\$7,143,717</b>	<b>\$4,641,583</b>

MEMORANDUM

TO: Northwest Florida Water Management District Governing Board

FROM: J. Breck Brannen, General Counsel

RE: Legal Counsel Report

DATE: February 5, 2025

---

***William and Ashley Merryman vs. St. Johns River Water Management District, et al.***, United States District Court for the Middle District of Florida (Jacksonville Division)  
Case No. 3:24-cv-658-MMH-SJH

The second amended complaint in this matter appears to allege violations of right to due process against at least 56 defendants, including the St. Johns River Water Management District, Suwannee River Water Management District, Northwest Florida Water Management District, Jerry Pate, Breck Brannen, Governor DeSantis, Florida Department of Environmental Protection, Florida Supreme Court, and many others. The amended complaint seeks declaratory relief, injunctive relief, compensatory damages and punitive damages.

The District has never been served in this case.

On December 12, 2024, the Court *sua sponte* dismissed plaintiffs' second amended complaint with leave to amend by no later than January 15, 2025. The Court stated that this would be the plaintiffs' last chance to amend. The Court strongly suggested that the plaintiffs reconsider who they are suing, whether the defendants are property sued, and whether all of plaintiffs' claims are properly brought in a single lawsuit.

On January 15, 2025, the plaintiffs' filed a motion to dismiss in an attempt to remove certain defendants from the lawsuit, including the District, Mr. Brannen and Mr. Pate. The Court denied plaintiffs' motion to dismiss as moot and gave the plaintiffs until February 14, 2025, to file a third amended complaint. The Court's order stated that plaintiffs may simply leave off those parties they wish to dismiss from the third amended complaint. Once the third amended complaint is filed, we will confirm with defense counsel that the District, Mr. Brannen and Mr. Pate are no longer named defendants and the matter can be closed.