

NORTHWEST FLORIDA WATER MANAGEMENT DISTRICT



In-Lieu Fee Mitigation Program

2025 Annual Report

31 March 2025

Permit: SAJ-2011-00287-TMF

Submitted to: Regulatory Division
U.S. Army Corps of Engineers, Jacksonville District
701 San Marco Blvd.
Jacksonville, FL 32207-8175

Submitted by: Northwest Florida Water Management District (Sponsor)
81 Water Management Drive
Havana, FL 32333-4712
850-539-5999

Sponsor Contact Information

Northwest Florida Water Management District

81 Water Management Dr.

Havana, FL 32333-4712

850-539-5999

Carol Bert, Chief, Bureau of Asset Management Administration

Carol.Bert@nfwwater.com

Robert Lide, Senior Environmental Scientist

Robert.Lide@nfwwater.com

Summary

The Northwest Florida Water Management District (NFWWMD) In-Lieu Fee (ILF) Mitigation Program evolved from an expired, ILF-type, wetlands mitigation program established by agreement between the US Army Corps of Engineers (USACE), Jacksonville District, and the NFWWMD in July 2006. To comply with the USACE / US Environmental Protection Agency 2008 Final Rule on compensatory mitigation (“Compensatory Mitigation for Losses of Aquatic Resources”; 33 CFR Parts 325 and 332; 40 CFR Part 230), seven mitigation projects, originally established under the 2006 agreement, were incorporated into the NFWWMD ILF Program. In 2021, the Live Oak Peninsula ILF project was expanded to include the Live Oak Point Living Shoreline project.

The ILF program Final Instrument was approved by the USACE on March 18, 2015 (Permit SAJ-2011-00287-TMF). The intent of the NFWWMD ILF Program is to provide compensatory mitigation options to the Florida Department of Transportation (FDOT) for areas not presently served by private mitigation banks or where appropriate bank credits, as determined by the USACE, are not available. Although the ILF Final Instrument has language that may allow use of the ILF program by non-FDOT entities, the policy of the NFWWMD is not to provide mitigation to any entity other than FDOT.

This “2025 Annual Report” has been developed to comply with reporting requirements (financial, credit balances, and assurances of long-term management funding) described in sections 7.3, 7.4, and 10.2 of the NFWWMD In-Lieu Fee Final Instrument (Final Instrument). Per these sections, an “annual program report,” an “annual report on financial assurances and long-term management funding,” and a “summary accounting statement” must be submitted to the USACE by March 31st of each year. The intent of this report is to provide an overview of the operation of the NFWWMD ILF Program for Calendar Year 2024 (1/1/2024 – 12/31/2024). Ecological monitoring reports for individual ILF sites used to determine if performance standards are being met or if adaptive management is necessary are site-specific, have varying reporting requirements, are submitted separately to the USACE, and are not included in this report.

The NFWWMD ILF Program is functioning as designed. It is financially sound and able to provide high levels of assurance that long-term management will be funded in perpetuity.

Program Report

Income received and interest earned

In Calendar Year 2024, the NFWWMD received no funds from FDOT for the reservation and sale of mitigation credits from ILF Program projects. As allowed by the Final Instrument, funds that are received are deposited into a single, dedicated mitigation account (Fund “A”) used exclusively for ILF and non-ILF mitigation projects. Expenditures and revenues are tracked individually for each ILF project using Munis software (Tyler Technologies, Inc., a developer of financial software for public sector needs).

At the beginning of 2024, Fund “A” had a balance of \$16,508,924.90 held at Florida PRIME; the ending balance for 2024 was \$16,756,786.73. Earned interest on Fund “A” for 2024 was \$875,590.46. All earned interest (4.70% rate as of 12/31/2024) remains in Fund “A” and will be used to implement and maintain NFWWMD mitigation projects. Currently, \$4.5 million within Fund “A” is reserved for ILF projects; this figure may be adjusted as necessary to guarantee implementation and funding for perpetual management of all ILF projects.

A list of all permits for which NFWWMD ILF Program funds were accepted

In 2024, the NFWWMD ILF Program did not provide any mitigation credit for wetland impacts and did not receive any funds from the sale of mitigation credits.

A description of NFWWMD ILF Program expenditures

From inception under the Umbrella Plan through 12/31/2024, a total of \$15,096,555.13 has been expended on the seven mitigation projects that comprise the ILF Program. Expenditures were for land acquisition, planning, construction, monitoring, maintenance, contingencies, adaptive management, administration, and salaries. Non-ILF expenditures are not included in this total.

In 2024, the NFWWMD expended \$245,539.25 on ILF projects (Table 1). This amount includes funds obligated for activities implemented in 2023 and paid in 2024; funds obligated for activities implemented in 2024 and paid in 2025 are not included. Expenditures in 2024 are apportioned as follows: land acquisition \$0; planning costs \$0; construction costs \$8,622.03; monitoring costs \$32,068.92¹; maintenance costs \$0; contingency costs \$0; adaptive management costs \$195,491.13; administration costs \$9,357.17. In 2024, \$41,833.25 was obligated for Fall 2024 monitoring to be paid for in Calendar Year 2025.

The program expenditure categories used in this report (i.e., land acquisition, planning, construction, monitoring, maintenance, contingencies, adaptive management, and administration) were derived from language in the USACE / US Environmental Protection Agency 2008 Final Rule and incorporated into the NFWWMD In-Lieu Fee Final Instrument. For the purposes of this report, maintenance costs are defined as those expenditures that would be associated with long-term management (not including monitoring) after site release by the USACE. Because no sites have been released, maintenance costs are \$0. Contingency costs, when applicable, would be associated with unanticipated expenditures associated with catastrophic events (e.g., unscheduled repair or replacement of a low-water-crossing after an extreme flood event). To date, there have been no contingency costs. Adaptive management costs are tied to ongoing restoration/mitigation activities prior to formal site release by the USACE. Some examples of adaptive management include removal of offsite pine, mechanical shrub reduction, herbicide treatment of exotic vegetation, planting of appropriate species, prescribed fire, control of nuisance animals such as

¹ This amount (\$32,068.92) paid in Calendar Year 2024 includes monitoring activities conducted in Fall 2023. The total cost of the Calendar Year 2024 monitoring, including payments to be made in 2025, is \$44,296.17 (Dutex—\$18,649; Lafayette Creek—\$8,292; Live Oak Point Living Shoreline—\$3,258.50; Shuler—\$392.32 for staff time; Tates Hell—\$441.35 for staff time; Ward Creek West—\$7,462; Yellow River Ranch—\$5,801).

feral hog and beaver, site access control such as gating, and hydrologic enhancements (e.g., low-water-crossings, ditch plugs, culverts, breaching of dykes, road removal, and beaver dam removal).

Credit reporting

The ILF Program was approved in 2015 with an initial balance of 195.98 credits. Since approval of the ILF Final Instrument on 3/18/2015, an additional 50.84 credits have been released and 52.74 credits have been debited. At the beginning of 2024, the balance of available credits was 194.08; at the end of 2024 the balance was 194.08 credits (Table 2). In 2024, no credits were debited, released or advanced (Figure 1).

As of 12/31/2024, the ILF Program had a balance of 194.08 credits available for immediate use:

- 7.20 Estuarine Emergent
- 14.26 Palustrine Emergent
- 0.37 Palustrine Scrub/Shrub
- 172.25 Palustrine Forested

Long-term management funding

The NFWFMD ILF Program continues to have sufficient funds to implement mitigation and ensure long-term management in perpetuity (Table 3).

As described in the approved Final Instrument, the price per credit for credits provided to FDOT is governed by section 373.4137, Florida Statutes (price is adjusted annually based on the federal Consumer Price Index). Notwithstanding language contained within the Final Instrument, the policy of the NFWFMD is not to provide mitigation credits to non-FDOT entities. As stipulated by the Final Instrument, if credits were to be provided to a non-FDOT entity, the price per credit charged to a non-FDOT entity would be determined from Appendix B of the Final Instrument (updated annually and included in this report as Table 3).

Annual 2024 summary accounting statement

In 2024, the NFWFMD ILF Program collected no funds for reservation and sale of credits.

Construction of a new component of the Live Oak Point ILF project (Live Oak Point Living Shoreline) began in August 2021 (SAJ-2011-00287, amended 3/25/2021; FDEP 0387876-001-EI-66, 5/26/2021) and continued through 2024. Approximately 3,440 FT of breakwater has been constructed using loose limerock (out of planned construction of 4,695 FT of breakwater). To avoid impacts to seagrass that had recently colonized the area, breakwater construction using loose limerock was halted. Breakwater construction resumed in 2024 and will be completed using

“Oyster Castle” blocks.² Oyster Castle blocks can be precisely placed and better enable avoidance of impacts to seagrass. Full completion of the Live Oak Point Living Shoreline project is anticipated in 2025.

A total of \$245,539.25 was expended in 2024 on the NFWFMD ILF Program. Fund “A” earned \$875,206.26 interest in 2024. \$41,833.25 was obligated in 2024 for monitoring to be paid in 2025. All earned interest remains in Fund “A” and will be used to implement and maintain NFWFMD mitigation projects. As of 12/31/2024, the fund had a balance of \$16,756,786.73 (an increase of \$247,861.83 from 12/31/2023). Currently, \$4.5 million within Fund “A” is reserved for ILF projects (this figure may be adjusted as necessary to guarantee implementation and funding for perpetual management of all ILF projects).

Advance credits and new projects

No advance credits were issued in 2024 and no new ILF projects were initiated.

ILF credit ledger balances through 12/31/2024

(see Appendix A)

² Oyster Castles™ are interlocking, stackable blocks manufactured with a cement mixture suitable for marine environments. Oyster Castles have been used extensively in living shoreline construction on the Atlantic and Gulf coasts.

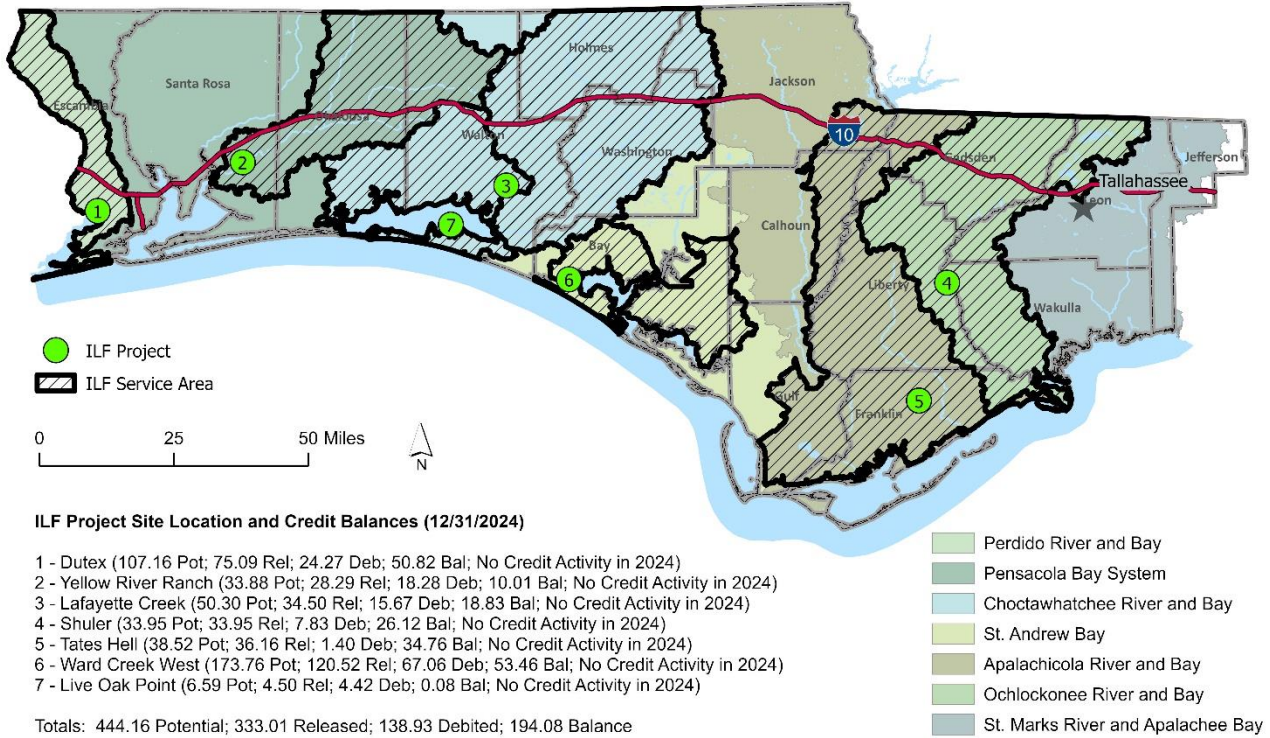


Figure 1: NFWMD In-Lieu Fee Program Credit Balances in 2024

Table 1: NFWWMD ILF Program Expenditures (Calendar Year 2024)¹

Mitigation Project	2024 Total Expenditures ²	MUNIS Code		2024 Costs								2024 Funds Obligated ⁴
		Previous	New	Land Acquisition	Planning	Construction	Monitoring ³	Maintenance	Contingencies	Adaptive Management	Administration	
Dutex	\$182,647.40	61007	47002	\$0.00	\$0.00	\$0.00	\$9,348.00	\$0.00	\$0.00	\$167,218.93	\$6,080.47	\$18,649.00
Lafayette Creek	\$13,761.18	61010	47004	\$0.00	\$0.00	\$0.00	\$7,793.00	\$0.00	\$0.00	\$5,093.82	\$874.36	\$8,292.00
Shuler	\$484.43	61033	47008	\$0.00	\$0.00	\$0.00	\$392.32	\$0.00	\$0.00	\$0.00	\$92.11	\$0.00
Tates Hell (Whiskey George Unit; Sumatra Unit; Pine Log Creek Unit)	\$544.97	61016	47005	\$0.00	\$0.00	\$0.00	\$441.35	\$0.00	\$0.00	\$0.00	\$103.62	\$0.00
Ward Creek West	\$10,198.92	61022	47006	\$0.00	\$0.00	\$0.00	\$7,013.00	\$0.00	\$0.00	\$2,637.58	\$548.34	\$7,462.00
Live Oak Peninsula	\$19,738.00	61027	47007	\$0.00	\$0.00	\$8,622.03	\$1,629.25	\$0.00	\$0.00	\$8,947.67	\$539.05	\$1,629.25
Yellow River Ranch	\$18,164.35	61009	47009	\$0.00	\$0.00	\$0.00	\$5,452.00	\$0.00	\$0.00	\$11,593.13	\$1,119.22	\$5,801.00
Totals:	\$245,539.25			\$0.00	\$0.00	\$8,622.03	\$32,068.92	\$0.00	\$0.00	\$195,491.13	\$9,357.17	\$41,833.25

Notes:

¹ An "Annual Program Report," due to the USACE by March 31st of each year, as described in detailed on page 15 of the ILF Final Instrument (Approved by the USACE 3/18/2015), requires a "description of NFWWMD ILF Program expenditures/disbursements from the mitigation account (i.e., land acquisition, planning, construction, monitoring, maintenance, contingencies, adaptive management, administration) for the program and by service area."

² This column ("2024 Total Expenditures") reports total disbursements of NFWWMD ILF Program funds for each project during Calendar Year 2024 (1/1/2024 - 12/31/2024), as tracked by "MUNIS" software (Tyler Technologies, Inc.). Each ILF project has a unique MUNIS code for tracking of expenditures. Funds obligated in Calendar Year 2024 for payment in 2025 are not included in this column.

³ This column ("Monitoring") reports payments made in Calendar Year 2024 for monitoring activities and includes payments for monitoring conducted in 2023 and paid for in 2024. Fall 2023 monitoring conducted by the Florida Natural Areas Inventory (FNAI) for Dutex, Lafayette Creek, Ward Creek West, and Yellow River Ranch and paid in Calendar Year 2024 is included. Fall 2024 monitoring conducted by FNAI for Dutex, Lafayette Creek, Ward Creek West, and Yellow River Ranch and paid in Calendar Year 2025 is excluded. Monitoring (Spring 2024 and Fall 2024) at Live Oak Peninsula was conducted by the Choctawhatchee Basin Alliance of Northwest Florida State College (CBA). The Spring 2024 CBA monitoring was paid in Calendar Year 2024 and is included. The Fall 2024 CBA monitoring was paid in Calendar Year 2025 and is excluded. Calendar Year 2024 monitoring of Shuler and Tates Hell was conducted by NFWWMD staff (monitoring costs are staff charges).

⁴ Mitigation funds obligated in Calendar Year 2024 for payment of monitoring conducted in Fall 2024 and paid in Calendar Year 2025. Note that monitoring at Dutex increased from \$9,348 (Fall 2023--paid for in 2024) to \$18,649 (Fall 2024--paid for in 2025). This reflects establishment of additional quantitative vegetation transects at Dutex.

Table 2: NFWFMD ILF Program Credit Ledger Summary (Beginning and Ending Balances for 2024)

Mitigation Project	Watershed	Credit Assessment Method	Credit Type	Beginning Program Balances (1/1/2024)					Ending Program Balances (12/31/2024)					Explanation of Change
				Potential Credits	Advance Credits	Released Credits	Debited Credits	Balance	Potential Credits	Advance Credits	Released Credits	Debited Credits	Balance	
Dutex	Perdido River and Bay	UMAM	Estuarine Emergent	10.15	0	7.12	0.00	7.12	10.15	0	7.12	0.00	7.12	No Change
			Palustrine Emergent	7.58	0	5.31	0.00	5.31	7.58	0	5.31	0.00	5.31	No Change
			Palustrine Scrub/Shrub	0.52	0	0.37	0.00	0.37	0.52	0	0.37	0.00	0.37	No Change
			Palustrine Forested	88.90	0	62.29	24.27	38.02	88.90	0	62.29	24.27	38.02	No Change
Yellow River Ranch	Yellow River	UMAM	Palustrine Emergent	11.89	0	9.92	9.07	0.85	11.89	0	9.92	9.07	0.85	No Change
			Palustrine Forested	21.99	0	18.37	9.21	9.16	21.99	0	18.37	9.21	9.16	No Change
Lafayette Creek	Choctawhatchee River and Bay	UMAM	Palustrine Forested	50.30	0	34.50	15.67	18.83	50.30	0	34.50	15.67	18.83	No Change
Tates Hell (Pine Log Creek Unit)	Apalachicola River	UMAM	Palustrine Emergent	8.12	0	8.12	0.02	8.10	8.12	0	8.12	0.02	8.10	No Change
			Palustrine Forested	8.56	0	8.56	0.06	8.50	8.56	0	8.56	0.06	8.50	No Change
Tates Hell (Sumatra Unit)	Apalachicola River	UMAM	Palustrine Forested	11.85	0	10.57	0.92	9.65	11.85	0	10.57	0.92	9.65	No Change
Tates Hell (Whiskey George Unit)	Apalachicola River	UMAM	Palustrine Forested	9.99	0	8.91	0.40	8.51	9.99	0	8.91	0.40	8.51	No Change
Shuler	Ochlockonee River	UMAM	Palustrine Forested	33.95	0	33.95	7.83	26.12	33.95	0	33.95	7.83	26.12	No Change
Ward Creek West	St. Andrew Bay	WRAP	Palustrine Forested	173.76	0	120.52	67.06	53.46	173.76	0	120.52	67.06	53.46	No Change
Live Oak Peninsula (Woolley Unit)	Choctawhatchee Bay	UMAM	Estuarine Emergent	1.32	0	1.32	1.32	0.00	1.32	0	1.32	1.32	0.00	No Change
Live Oak Peninsula (Lee Unit)	Choctawhatchee Bay	UMAM	Palustrine Forested	2.66	0	2.66	2.66	0.00	2.66	0	2.66	2.66	0.00	No Change
Live Oak Point Living Shorelines	Choctawhatchee Bay	UMAM	Estuarine Emergent	2.61	0	0.52	0.44	0.08	2.61	0	0.52	0.44	0.08	No Change
Total:				444.16	0	333.01	138.93	194.08	444.16	0	333.01	138.93	194.08	
All ILF Projects Combined		UMAM or WRAP	Estuarine Emergent	14.08	0	8.96	1.76	7.20	14.08	0	8.96	1.76	7.20	2024 Summary: 0 Potential Credits Added 0 Advance Credits Added 0 Additional Credits Released 0 Credits Debited
			Palustrine Emergent	27.59	0	23.35	9.09	14.26	27.59	0	23.35	9.09	14.26	
			Palustrine Scrub/Shrub	0.52	0	0.37	0.00	0.37	0.52	0	0.37	0.00	0.37	
			Palustrine Forested	401.96	0	300.33	128.08	172.25	401.96	0	300.33	128.08	172.25	
Totals:				444.16	0	333.01	138.93	194.08	444.16	0	333.01	138.93	194.08	

Table 3: NFWFMD ILF Program Cost Accounting Spreadsheet (Calendar Year 2024)

A	B	C	D	E	F	G	H	I	J	K	L	M	N	O	P	Q	R	S	T	U	V	W	X	Y	Z	AA
				[E=C-D]	[F=B-C]			[I=G+H]				[M=J+K+L]	[N=I+M]	[O=N/B]				[U=Q-R]		[U=T*(E+F)]	[V=S+U]	[W=V-N]	[X=J+W]	[Y=X*Y\$5]		[AA=(N+Z)/B]
PROJECT	CREDITS (12/31/2024)					EXPENDITURES								LONG TERM MANAGEMENT	REVENUES					END BALANCE	MANAGEMENT AFTER FINAL CREDIT SALE		ESTIMATED PRICE PER CREDIT FOR NON-FDOT ENTITIES			
PROJECT	POTENTIAL (TOTAL)	RELEASED	DEBITED	BALANCE	POTENTIAL (REMAINING)	RESTORATION COSTS			INITIAL SET ASIDE FUNDS FOR LTM&M, CAPITAL REPLACEMENT, AND CONTINGENCIES			TOTAL COST THRU 2025	LTM&M ANNUAL COSTS	LTD REVENUES			FY 25 FDOT PER ACRE FUNDING	ESTIMATED VALUE OF UNSOLD CREDITS	TOTAL PROJECTED REVENUE		Rate of return (DEC 2024): 4.70%					
Mitigation project	Potential credits	Released credits	Debited credits	Balance of credits	Remaining potential credits	LTD expenditures through 2024	Projection of expenditures 2025	Projection of total restoration costs (excluding set aside funds for LTM&M, capital replacement, and contingencies) for mitigation project from inception through 2025	Set aside fund for LTM&M	Set aside fund for capital replacement (LWCs, etc.)	Set aside fund for contingencies (e.g., catastrophic hurricane, flooding, or feral hog damage)	Total set aside fund	Projection of total costs (restoration expenditures plus set aside funds) from project inception through 2025	Projection of cost per credit to NFWFMD from inception through 2025 [FOR INFORMATION ONLY--THIS IS NOT AN ESTIMATE OF TOTAL COST PER CREDIT TO NFWFMD]	Projection of future annual LTM&M expenditures after all success criteria are met	LTD revenues through 2024	LTD revenue adjustment value (i.e., estimated non-ILF expenditures)	Adjusted LTD revenues through 2024 (adjusted for non-ILF mitigation expenditures)	Amount of FDOT funding per acre (not credit) of wetland impact as governed by FS 373.4137	Projected value of unsold credits (released and remaining potential) based on FDOT per-acre funding	Total projected revenue from inception of each mitigation project through achievement of all success criteria, based on FDOT per-acre funding	Projected revenue minus cost after achievement of all success criteria (based on FDOT per-acre funding)	Projected revised set aside fund for LTM&M (may be distributed between projects if needed)	Projected annual investment revenue for LTM&M	Minimum projected amount needed in set aside, based on 12/2024 interest rate (4.70%), if interest alone pays for LTM&M	Price per credit including perpetual LTM&M (based on interest alone on set aside funds fully covering LTM&M) for non-FDOT entities
Dutex	107.16	75.09	24.27	50.82	32.07	\$4,027,764.07	\$75,000.00	\$4,102,764.07	\$340,000.00	\$100,000.00	\$100,000.00	\$540,000.00	\$4,642,764.07	\$43,325.53	\$15,000.00	\$1,734,712.02	\$200,000	\$1,534,712.02	\$144,319.00	\$11,962,601.91	\$13,497,313.93	\$8,854,549.86	\$9,194,549.86	\$432,143.84	\$319,149	\$46,303.78
Lafayette Creek	50.30	34.50	15.67	18.83	15.80	\$3,246,904.74	\$50,000.00	\$3,296,904.74	\$300,000.00	\$100,000.00	\$80,000.00	\$480,000.00	\$3,776,904.74	\$75,087.57	\$15,000.00	\$2,824,232.93	\$0	\$2,824,232.93	\$144,319.00	\$4,997,766.97	\$7,821,999.90	\$4,045,095.16	\$4,345,095.16	\$204,219.47	\$319,149	\$81,432.48
Shuler	33.95	33.95	7.83	26.12	0.00	\$2,160,001.65	\$1,000.00	\$2,161,001.65	\$300,000.00	\$0.00	\$50,000.00	\$350,000.00	\$2,511,001.65	\$73,961.76	\$1,000.00	\$679,445.19	\$0	\$679,445.19	\$144,319.00	\$3,769,612.28	\$4,449,057.47	\$1,938,055.82	\$2,238,055.82	\$105,188.62	\$21,277	\$74,588.46
Tates Hell	38.52	36.16	1.40	34.76	2.36	\$378,572.96	\$1,000.00	\$379,572.96	\$300,000.00	\$100,000.00	\$50,000.00	\$450,000.00	\$829,572.96	\$21,536.16	\$1,000.00	\$557,511.55	\$200,000	\$357,511.55	\$144,319.00	\$5,357,121.28	\$5,714,632.83	\$4,885,059.87	\$5,185,059.87	\$243,697.81	\$21,277	\$22,088.51
Ward Creek West	173.76	120.52	67.06	53.46	53.24	\$3,529,222.80	\$120,000.00	\$3,649,222.80	\$300,000.00	\$0.00	\$150,000.00	\$450,000.00	\$4,099,222.80	\$23,591.29	\$15,000.00	\$4,017,365.64	\$0	\$4,017,365.64	\$144,319.00	\$15,398,837.30	\$19,416,202.94	\$15,316,980.14	\$15,616,980.14	\$733,998.07	\$319,149	\$25,428.01
Live Oak Peninsula	6.59	4.50	4.42	0.08	2.09	\$772,878.98	\$175,000.00	\$947,878.98	\$300,000.00	\$0.00	\$0.00	\$300,000.00	\$1,247,878.98	\$189,359.48	\$10,000.00	\$1,777,442.35	\$0	\$1,777,442.35	\$144,319.00	\$313,172.23	\$2,090,614.58	\$842,735.60	\$1,142,735.60	\$53,708.57	\$212,766	\$221,645.67
Yellow River Ranch	33.88	28.29	18.28	10.01	5.59	\$981,209.93	\$25,000.00	\$1,006,209.93	\$300,000.00	\$50,000.00	\$80,000.00	\$430,000.00	\$1,436,209.93	\$42,391.08	\$8,000.00	\$4,312,556.16	\$975,000	\$3,337,556.16	\$144,319.00	\$2,251,376.40	\$5,588,932.56	\$4,152,722.63	\$4,452,722.63	\$209,277.96	\$170,213	\$47,415.07
Totals:	444.16	333.01	138.93	194.08	111.15	\$15,096,555.13	\$447,000.00	\$15,543,555.13	\$2,140,000.00	\$350,000.00	\$510,000.00	\$3,000,000.00	\$18,543,555.13		\$65,000.00	\$15,903,265.84	\$1,375,000	\$14,528,265.84		\$44,050,488.37	\$58,578,754.21	\$40,035,199.08	\$42,175,199.08	\$1,982,234.36	\$1,382,979	

Column Notes:

A - Project name (Tates Hell has three component sites--Tates Hell Pine Log Creek, Tates Hell Sumatra, and Tates Hell Whiskey George; Live Oak Peninsula also has three component sites--Live Oak Point Woolley, Live Oak Point Lee, and Live Oak Point Living Shorelines).

B, C, D, E, and F - Potential Credits, Released Credits, Debited Credits, Balance of Credits, and Remaining Potential Credits (updated through 12/31/2024).

G - Actual LTD (Life to Date) project expenditures through 12/31/2024 (some mitigation sites included in the ILF Program have non-ILF components; non-ILF expenditures are excluded).

H - Projection of anticipated 2025 expenditures.

I - Projection of total ILF project restoration costs (excluding funds set aside for LTM&M, capital replacements, and contingencies) through 2025.

J - Amount within "Fund A" (NFWFMD dedicated mitigation account) that is set aside for LTM&M. Guarantees of LTM&M for NFWFMD ILF sites include upfront allocation of mitigation funds in "Fund A," future credit sales, statutory mandates, NFWFMD policies, and the binding terms of the NFWFMD ILF Instrument. All revenues obtained from ILF credit sales will be deposited into this account, and interest earned on this account will remain in the account.

K - Amount within "Fund A" (NFWFMD dedicated mitigation account) that is set aside for future capital replacement costs (e.g., low-water-crossings refurbishments, culverts, access). May be used in future for LTM&M if capital replacements not needed.

L - Amount within "Fund A" (NFWFMD dedicated mitigation account) that is set aside for contingencies such as hurricane damage, flooding, or damage caused by feral hogs. May be used in future for LTM&M if contingency funds not needed.

M - Total amount within "Fund A" (NFWFMD dedicated mitigation account) that is set aside for long-term management, capital replacement costs, and contingency planning. [Column M = Columns J + K + L]

N - Projection of total ILF project costs through 2025 (includes projected restoration costs and funds set aside for LTM&M, capital replacement, and contingencies).

O - For information only and not to be confused with the total cost per credit to NFWFMD in perpetuity. Estimated cost per credit to NFWFMD through 2025 (including set aside funds for LTM&M, capital replacement, and contingencies; perpetual LTM&M not included).

P - Projected annual LTM&M costs after all success criteria have been met.

Q, R, S - Life to Date (LTD) revenues adjusted for non-ILF expenditures. Does not include earned interest on the dedicated mitigation account (Fund "A"). Earned interest on Fund "A" (used to fund both ILF and Non-ILF projects, as allowed by the Final Instrument) in 2024 was \$875,590.46.

T - FDOT per-acre funding for direct wetland impacts as governed by section 373.4137, FS. For FDOT Fiscal Year 2025 (July 1, 2024 - June 30, 2025), this amount is set at \$144,319 per acre of direct impact and must also cover the cost of mitigating any indirect or cumulative impacts (e.g., 1 acre of mitigation funding may result in >1 credit or <1 credit being provided to FDOT depending on permit conditions). The per-acre funding from FDOT is adjusted each year based on the federal Consumer Price Index. Mitigation funding from FDOT may be subject to legislative changes in future years.

U - Value of unsold credits if all credits were sold at the current FDOT per-acre funding amount. This is a hypothetical value in that it will be many years, if ever, before all remaining ILF credits are sold, the per-acre funding from FDOT is adjusted annually based on the federal Consumer Price Index, the number of credits required by USACE permits to offset impacted wetland acres will vary from project to project based on functional assessments, (e.g., 1 acre of mitigation funding may result in >1 credit or <1 credit being provided to FDOT depending on permit conditions), and funding from FDOT may be subject to legislative changes in future years.

V - Total revenue if all remaining credits were sold to FDOT at the current per-acre funding provided by section 373.4137, FS. This is a hypothetical value in that it will be many years, if ever, before all remaining ILF credits are sold. Furthermore, the per-acre funding from FDOT is adjusted annually based on the federal Consumer Price Index, the number of credits required by USACE permits to offset impacted wetland acres will vary from project to project based on functional assessments, (e.g., 1 acre of mitigation funding may result in >1 credit or <1 credit being provided to FDOT depending on permit conditions), and funding from FDOT may be subject to legislative changes in future years.

W - End balance of funds if all credits (currently available plus remaining potential) were sold to FDOT at \$144,319 per credit (i.e., the FY 2025 per-acre funding level). This is a hypothetical value in that it will be many years, if ever, before all remaining ILF credits are sold. Furthermore, the per-acre funding from FDOT is adjusted annually based on the federal Consumer Price Index, the number of credits required by USACE permits to offset impacted wetland acres will vary from project to project based on functional assessments, (e.g., 1 acre of mitigation funding may result in >1 credit or <1 credit being provided to FDOT depending on permit conditions), and funding from FDOT may be subject to legislative changes in future years. This hypothetical end balance is revised annually and should not be considered a requirement of the NFWFMD ILF Program.

X - Projected revised set aside fund for LTM&M if all remaining credits were to be sold to FDOT at the current per-acre funding provided by section 373.4137, FS. Set aside funds may be distributed among projects if necessary to ensure full LTM&M funding. The value in Column X is a theoretical target that will be modified annually. It will be many years, if ever, before all remaining ILF credits are sold. Furthermore, the per-acre funding from FDOT is modified annually based on the federal Consumer Price Index, the number of credits required by USACE permits to offset impacted wetland acres will vary based on functional assessments, and mitigation funding from FDOT may be subject to legislative changes in future years. This target is not to be considered a requirement of the NFWFMD ILF Program.

Y - Projected annual interest return on the target set aside fund for LTM&M fund in Column X. All interest will remain in "Fund A" (NFWFMD dedicated mitigation fund). LTM&M will be funded by "Fund A."

Z - Amount needed in a LTM&M set aside if annual interest alone were to pay for LTM&M in perpetuity. This column is for information only and should be construed as a target, not a requirement. NFWFMD is committed to perpetual LTM&M of all ILF projects. Guarantees of LTM&M for NFWFMD ILF sites include upfront allocation of mitigation funds in "Fund A," future credit sales, statutory mandates, NFWFMD policies, and the binding terms of the NFWFMD ILF Instrument.

AA - Estimated Cost-per-Credit, per USACE guidance, when including the minimum set aside amount necessary (Column Z) to fully fund LTM&M in perpetuity through earned interest alone. Per the USACE, this is the per-credit-rate that would be charged to any non-FDOT customers (mitigation provided to FDOT will be funded in accordance with section 373.4137, FS--the "Cost-per-Credit" in Column AA shall not apply to FDOT projects). The policy of the NFWFMD is to provide mitigation only to FDOT.

*Four million five hundred thousand dollars within "Fund A" is currently allocated for ILF projects, with the remainder being allocated for non-ILF mitigation. "Fund A" will be reallocated, as necessary, among ILF and non-ILF projects to ensure full implementation and long-term management of all ILF projects. As of 12/31/2024, \$16,756,786.73 was available in "Fund A" for NFWFMD mitigation projects.

Appendix A: ILF Credit Ledger through 12/31/2024

NWFWMD In-Lieu Fee Mitigation Program (SAJ-2011-00287-TMF, 3/18/2015)

In-Lieu Fee (ILF) Program Credit Summary (All ILF Projects and All Credit Types Combined)

A - Total Potential Credits (All Types) Approved by USACE = 444.16

B - Total Credits (All Types) Released by USACE = 333.01

C - Total Credits (All Types) Debited = 138.93

Current ILF Credit Balance [B - C] = 194.08

In-Lieu Fee (ILF) Program Credit Summary by Credit Type

Estuarine Emergent (CCN 2) Credits

Total Potential Estuarine Emergent (CCN 2) Credits Approved by USACE = 14.08

Total Estuarine Emergent (CCN 2) Credits Released by USACE = 8.96

Total Estuarine Emergent (CCN 2) Credits Debited = 1.76

Current ILF Estuarine Emergent (CCN 2) Credit Balance = **7.20**

Palustrine Emergent (CCN 7) Credits

Total Potential Palustrine Emergent (CCN 7) Credits Approved by USACE = 27.59

Total Palustrine Emergent (CCN 7) Credits Released by USACE = 23.35

Total Palustrine Emergent (CCN 7) Credits Debited = 9.09

Current ILF Palustrine Emergent (CCN 7) Credit Balance = **14.26**

Palustrine Scrub/Shrub (CCN 8) Credits

Total Potential Palustrine Scrub/Shrub (CCN 8) Credits Approved by USACE = 0.52

Total Palustrine Scrub/Shrub (CCN 8) Credits Released by USACE = 0.37

Total Palustrine Scrub/Shrub (CCN 8) Credits Debited = 0.00

Current ILF Palustrine Scrub/Shrub (CCN 8) Credit Balance = **0.37**

Palustrine Forested (CCN 9) Credits

Total Potential Palustrine Forested (CCN 9) Credits Approved by USACE = 401.96

Total Palustrine Forested (CCN 9) Credits Released by USACE = 300.33

Total Palustrine Forested (CCN 9) Credits Debited = 128.08

Current ILF Palustrine Forested (CCN 9) Credit Balance = **172.25**

Dutex ILF Mitigation Area

Project Watershed: Perdido River & Bay

Credit Assessment Methodology: UMAM

Project Status: Ongoing (Project Initiated in 2009)

Dutex Mitigation Project Credit Summary (All Credit Types)	
<u>Potential</u> Credits Approved by USACE =	107.16
Credits <u>Released</u> by USACE =	75.09
Credits <u>Debited</u> =	24.27
Current Dutex ILF Total Credit Balance [Released - Debited] =	50.82

Dutex Mitigation Project Credit Summary (Estuarine Emergent, CCN 2)	
<u>Potential</u> Credits Approved by USACE =	10.15
Credits <u>Released</u> by USACE =	7.12
Credits <u>Debited</u> =	0.00
Current Dutex ILF <u>Estuarine Emergent</u> Credit Balance [Released - Debited] =	7.12

Dutex Mitigation Project Credit Summary (Palustrine Emergent, CCN 7)	
<u>Potential</u> Credits Approved by USACE =	7.58
Credits <u>Released</u> by USACE =	5.31
Credits <u>Debited</u> =	0.00
Current Dutex ILF <u>Palustrine Emergent</u> Credit Balance [Released - Debited] =	5.31

Dutex Mitigation Project Credit Summary (Palustrine Scrub/Shrub, CCN 8)	
<u>Potential</u> Credits Approved by USACE =	0.52
Credits <u>Released</u> by USACE =	0.37
Credits <u>Debited</u> =	0.00
Current Dutex ILF <u>Palustrine Scrub/Shrub</u> Credit Balance [Released - Debited] =	0.37

Dutex Mitigation Project Credit Summary (Palustrine Forested, CCN 9)

Potential Credits Approved by USACE =	88.90
Credits Released by USACE =	62.29
Credits Debited =	24.27
Current Dutex ILF Palustrine Forested Credit Balance [Released - Debited] =	38.02

Dutex Estuarine Emergent (CCN 2) Credit Ledger

Trans- action Number	Permittee/Credit Recipient Name or CREDIT RELEASE	USACE Permit	Amount of Funds Received from Permittee	Date Funds Received from Permittee	Date of Ledger Modification	Credits Released (+)	Credits Debited (-)	Balance
1	Credit Transactions under Umbrella Plan Agreement (i.e., prior to ILF Final Instrument)	--	--	--	--	6.00	0.00	6.00
2	CREDIT RELEASE (1st Interim)	--	--	--	10/29/2021	1.12	0.00	7.12
3								7.12
4								7.12
5								7.12
6								7.12
7								7.12
8								7.12
9								7.12
10								7.12
11								7.12
12								7.12
Dutex Estuarine Emergent (CCN 2) Totals:						7.12	0.00	7.12

Dutex Palustrine Emergent (CCN 7) Credit Ledger

Trans- action Number	Permittee/Credit Recipient Name or CREDIT RELEASE	USACE Permit	Amount of Funds Received from Permittee	Date Funds Received from Permittee	Date of Ledger Modification	Credits Released (+)	Credits Debited (-)	Balance
1	Credit Transactions under Umbrella Plan Agreement (i.e., prior to ILF Final Instrument)	--	--	--	--	4.48	0.00	4.48
2	CREDIT RELEASE (1st Interim)	--	--	--	10/29/2021	0.83	0.00	5.31
3								5.31
4								5.31
5								5.31
6								5.31
7								5.31
8								5.31
9								5.31
10								5.31
11								5.31
12								5.31
Dutex Palustrine Emergent (CCN 7) Totals:						5.31	0.00	5.31

Dutex Palustrine Scrub/Shrub (CCN 8) Credit Ledger

Trans- action Number	Permittee/Credit Recipient Name or CREDIT RELEASE	USACE Permit	Amount of Funds Received from Permittee	Date Funds Received from Permittee	Date of Ledger Modification	Credits Released (+)	Credits Debited (-)	Balance
1	Credit Transactions under Umbrella Plan Agreement (i.e., prior to ILF Final Instrument)	--	--	--	--	0.31	0.00	0.31
2	CREDIT RELEASE (1st Interim)	--	--	--	10/29/2021	0.06	0.00	0.37
3								0.37
4								0.37
5								0.37
6								0.37
7								0.37
8								0.37
9								0.37
10								0.37
11								0.37
12								0.37
Dutex Palustrine Scrub/Shrub (CCN 8) Totals:						0.37	0.00	0.37

Dutex Palustrine Forested (CCN 9) Credit Ledger

Trans- action Number	Permittee/Credit Recipient Name or CREDIT RELEASE	USACE Permit	Amount of Funds Received from Permittee	Date Funds Received from Permittee	Date of Ledger Modification	Credits Released (+)	Credits Debited (-)	Balance
1	Credit Transactions under Umbrella Plan Agreement (i.e., prior to ILF Final Instrument)	--	--	--	--	52.51	19.77	32.74
2	FDOT (CR 489 / Stefani Road at Unnamed Bridge near Pensacola)	SAJ-2013-00507 NW-AWP	\$53,729.00	June, 2013	6/23/2015	0.00	0.24	32.50
3	FDOT (US 29 from I-10 to US 90A)	SAJ-2014-02682 GP-MMW	\$214,914.00	June, 2013	10/8/2015	0.00	1.62	30.88
4	FDOT (Patricia Drive at Byaou Marcus Creek)	SAJ-2015-02000 NW-LEW	\$53,183.00	April, 2016	4/26/2016	0.00	0.58	30.30
5	FDOT (US 90A from CR 99 to SR 297)	SAJ-2016-03316 RGP-RLT	\$293,557.00	June, 2016; April, 2017	5/4/2017	0.00	1.96	28.34
6	CREDIT RELEASE (1st Interim)	--	--	--	10/29/2021	9.78	0.00	38.12
7	FDOT (SR 292 at Choctaw Avenue)	SAJ-2018-02178 NW-RPR	\$43,513.00	10/25/2021	11/5/2021	0.00	0.10	38.02
8								38.02
9								38.02
10								38.02
11								38.02
12								38.02
Dutex Palustrine Forested (CCN 9) Totals:						62.29	24.27	38.02

Yellow River Ranch Mitigation Area ILF Credit Ledger

Project Watershed: Yellow River

Credit Assessment Methodology: UMAM

Project Status: Ongoing (Project Initiated in 2005)

Yellow River Ranch Mitigation Project Credit Summary (All Credit Types)	
Potential Credits Approved by USACE =	33.88
Credits Released by USACE =	28.29
Credits Debited =	18.28
Current Yellow River Ranch ILF Total Credit Balance [Released - Debited] =	10.01

Yellow River Ranch Mitigation Project Credit Summary (Palustrine Emergent, CCN 7)	
Potential Credits Approved by USACE =	11.89
Credits Released by USACE =	9.92
Credits Debited =	9.07
Current Yellow River Ranch ILF Palustrine Emergent Credit Balance [Released - Debited] =	0.85

Yellow River Ranch Mitigation Project Credit Summary (Palustrine Forested, CCN 9)	
Potential Credits Approved by USACE =	21.99
Credits Released by USACE =	18.37
Credits Debited =	9.21
Current Yellow River Ranch ILF Palustrine Forested Credit Balance [Released - Debited] =	9.16

Yellow River Ranch Palustrine Emergent (CCN 7) Credit Ledger

Trans- action Number	Permittee/Credit Recipient Name or CREDIT RELEASE	USACE Permit	Amount of Funds Received from Permittee	Date Funds Received from Permittee	Date of Ledger Modification	Credits Released (+)	Credits Debited (-)	Balance
1	Credit Transactions under Umbrella Plan Agreement (i.e., prior to ILF Final Instrument)	--	--	--	--	4.40	0.00	4.40
2	CREDIT RELEASE (1st and 2nd Interim)	--	--	--	12/16/2015	3.56	0.00	7.96
3	FDOT (SR 87 at Yellow River Bridge)	SAJ-2014-02879 GP-MMW	\$1,361,113.00	June, 2013	1/8/2016	0.00	7.96	0.00
4	CREDIT RELEASE (3rd Interim)	--	--	--	11/4/2021	1.96	0.00	1.96
5	FDOT (I-10 Antioch Interchange)	State 404 Permit 0397073-001-SFI/46	\$747,111.00	8/31/2022	8/31/2022	0.00	1.11	0.85
6								0.85
7								0.85
8								0.85
9								0.85
10								0.85
11								0.85
12								0.85
Yellow River Ranch Palustrine Emergent (CCN 7) Totals:						9.92	9.07	0.85

Yellow River Ranch Palustrine Forested (CCN 9) Credit Ledger

Trans- action Number	Permittee/Credit Recipient Name or CREDIT RELEASE	USACE Permit	Amount of Funds Received from Permittee	Date Funds Received from Permittee	Date of Ledger Modification	Credits Released (+)	Credits Debited (-)	Balance
1	Credit Transactions under Umbrella Plan Agreement (i.e., prior to ILF Final Instrument)	--	--	--	--	8.14	0.00	8.14
2	FDOT (US 90 Yellow River Bridge)	SAJ-2012-00501 SP-MMW	\$418,804.00	June, 2013	3/18/2015	0.00	2.40	5.74
3	CREDIT RELEASE (1st and 2nd Interim)	--	--	--	12/16/2015	6.60	0.00	12.34
4	FDOT (SR 87 at Yellow River Bridge)	SAJ-2014-02879 GP-MMW	(see amt. rec'd. for this permit under YRR Emergent credits)	June, 2013	1/8/2016	0.00	3.07	9.27
5	FDOT (SR 4 Blackwater River Bridge)	SAJ-2012-01676 NW-RLT	\$200,328.00	7/2/2018	7/12/2018	0.00	1.09	8.18
6	CREDIT RELEASE (3rd Interim)	--	--	--	11/4/2021	3.63	0.00	11.81
7	FDOT (I-10 Antioch Interchange)	State 404 Permit 0397073-001-SFI/46	(see amt. rec'd. for this permit under YRR Emergent credits)	8/31/2022	8/31/2022	0.00	2.65	9.16
8								9.16
9								9.16
10								9.16
11								9.16
Yellow River Ranch Palustrine Forested (CCN 9) Totals:						18.37	9.21	9.16

Lafayette Creek Mitigation Area ILF Credit Ledger

Project Watershed: Choctawhatchee River & Bay

Credit Assessment Methodology: UMAM

Project Status: Ongoing (Project Initiated in 2004)

Lafayette Creek Mitigation Project Credit Summary (Palustrine Forested, CCN 9)	
A - <u>Potential</u> Credits Approved by USACE =	50.30
C - Credits <u>Released</u> by USACE =	34.50
D - Credits <u>Debited</u> =	15.67
Current Lafayette Creek ILF Credit Balance [B + C - D] =	18.83

Lafayette Creek Palustrine Forested (CCN 9) Credit Ledger

Trans- action Number	Permittee/Credit Recipient Name or CREDIT RELEASE	USACE Permit	Amount of Funds Received from Permittee	Date Funds Received from Permittee	Date of Ledger Modification	Credits Released (+)	Credits Debited (-)	Balance
1	Credit Transactions under Umbrella Plan Agreement (i.e., prior to ILF Final Instrument)	--	--	--	--	29.47	8.63	20.84
2	FDOT (SR 123 from SR 85 to north of Toms Creek)	SAJ-2013-00985 NW-AWP	\$73,071.00	June, 2013	6/5/2015	0.00	0.14	20.70
3	FDOT (SR 123 from north of Toms Creek to north of Turkey Creek)	SAJ-2013-01012 SP-AWP	\$257,897.00	June, 2013	6/23/2015	0.00	6.90	13.80
4	CREDIT RELEASE (1st Interim)	--	--	--	8/31/2021	5.03	0.00	18.83
5								18.83
6								18.83
7								18.83
8								18.83
9								18.83
10								18.83
11								18.83
12								18.83
Lafayette Creek Palustrine Forested (CCN 9) Totals:						34.50	15.67	18.83

Tates Hell Mitigation Area (Pine Log Creek Unit) ILF Credit Ledger

Project Watershed: Apalachicola River

Credit Assessment Methodology: UMAM

Project Status: Project Complete and in Long-term Management (Project Initiated in 2009)

Tates Hell (Pine Log Creek) Mitigation Project Credit Summary (All Credit Types)	
Potential Credits Approved by USACE =	16.68
Credits Released by USACE =	16.68
Credits Debited =	0.08
Current Tates Hell (Pine Log Creek) ILF Total Credit Balance [Released - Debited] =	16.60

Tates Hell (Pine Log Creek) Mitigation Project Credit Summary (Palustrine Emergent, CCN 7)	
Potential Credits Approved by USACE =	8.12
Credits Released by USACE =	8.12
Credits Debited =	0.02
Current Tates Hell (Pine Log Creek) ILF Palustrine Emergent Credit Balance [Released - Debited] =	8.10

Tates Hell (Pine Log Creek) Mitigation Project Credit Summary (Palustrine Forested, CCN 9)	
Potential Credits Approved by USACE =	8.56
Credits Released by USACE =	8.56
Credits Debited =	0.06
Current Tates Hell (Pine Log Creek) ILF Palustrine Forested Credit Balance [Released - Debited] =	8.50

Tates Hell (Pine Log Creek) Palustrine Emergent (CCN 7) Credit Ledger

Trans- action Number	Permittee/Credit Recipient Name or CREDIT RELEASE	USACE Permit	Amount of Funds Received from Permittee	Date Funds Received from Permittee	Date of Ledger Modification	Credits Released (+)	Credits Debited (-)	Balance
1	Credit Transactions under Umbrella Plan Agreement (i.e., prior to ILF Final Instrument)	--	--	--	--	8.12	0.00	8.12
2	FDOT (US 98 from US 319 east to Ochlockonee Bay Bridge)	State 404 Permit 0426910-001-SFG	\$3,041.71	5/26/2023	6/5/2023	0.00	0.02	8.10
3								8.10
4								8.10
5								8.10
6								8.10
7								8.10
8								8.10
9								8.10
10								8.10
11								8.10
12								8.10
Tates Hell (Pine Log Creek) Palustrine Emergent (CCN 7) Totals:						8.12	0.02	8.10

Tates Hell (Pine Log Creek) Palustrine Forested (CCN 9) Credit Ledger

Trans- action Number	Permittee/Credit Recipient Name or CREDIT RELEASE	USACE Permit	Amount of Funds Received from Permittee	Date Funds Received from Permittee	Date of Ledger Modification	Credits Released (+)	Credits Debited (-)	Balance
1	Credit Transactions under Umbrella Plan Agreement (i.e., prior to ILF Final Instrument)	--	--	--	--	8.56	0.00	8.56
2	CSX Transportation, Inc (Chattahoochee)	SAJ-2011-01476 NW-LSL	\$2,515.67	8/3/2015	8/4/2015	0.00	0.06	8.50
3								8.50
4								8.50
5								8.50
6								8.50
7								8.50
8								8.50
9								8.50
10								8.50
11								8.50
12								8.50
Tates Hell (Pine Log Creek) Palustrine Forested (CCN 9) Totals:						8.56	0.06	8.50

Tates Hell Mitigation Area (Sumatra Unit) ILF Credit Ledger

Project Watershed: Apalachicola River

Credit Assessment Methodology: UMAM

Project Status: Project Complete and in Long-term Management (Project Initiated in 2009)

Tates Hell (Sumatra Unit) Mitigation Project Credit Summary (Palustrine Forested, CCN 9)	
Potential Credits Approved by USACE =	11.85
Credits Released by USACE =	10.57
Credits Debited =	0.92
Current Tates Hell (Sumatra Unit) ILF Palustrine Forested Credit Balance [Released - Debited] =	9.65

Tates Hell (Sumatra Unit) Palustrine Forested (CCN 9) Credit Ledger

Trans- action Number	Permittee/Credit Recipient Name or CREDIT RELEASE	USACE Permit	Amount of Funds Received from Permittee	Date Funds Received from Permittee	Date of Ledger Modification	Credits Released (+)	Credits Debited (-)	Balance
1	Credit Transactions under Umbrella Plan Agreement (i.e., prior to ILF Final Instrument)	--	--	--	--	10.57	0.75	9.82
2	FDOT (SR 71 at SR 69 / Pear St. in Blountstown)	SAJ-2014-01305 NW-JML	\$15,600.00	5/26/2015	6/23/2015	0.00	0.14	9.68
3	FDOT (CR 280 / Shady Grove Road from SR 69 to CR 286)	SAJ-2018-02718 NW-CDO	\$13,166.00	7/11/2019	7/15/2019	0.00	0.03	9.65
4								9.65
5								9.65
6								9.65
7								9.65
8								9.65
9								9.65
10								9.65
11								9.65
12								9.65
Tates Hell (Sumatra Unit) Palustrine Forested (CCN 9) Totals:						10.57	0.92	9.65

Tates Hell Mitigation Area (Whiskey George Unit) ILF Credit Ledger

Project Watershed: Apalachicola River

Credit Assessment Methodology: UMAM

Project Status: Project Complete and in Long-term Management (Project Initiated in 2009)

Tates Hell Mitigation Project (Whiskey George Unit) Palustrine Forested (CCN 9) Credit Summary	
Potential Credits Approved by USACE =	9.99
Credits Released by USACE =	8.91
Credits Debited =	0.40
Current Tates Hell (Whiskey George Unit) ILF Palustrine Forested Credit Balance [Released - Debited] =	8.51

Tates Hell (Whiskey George Unit) Palustrine Forested (CCN 9) Credit Ledger

Trans- action Number	Permittee/Credit Recipient Name or CREDIT RELEASE	USACE Permit	Amount of Funds Received from Permittee	Date Funds Received from Permittee	Date of Ledger Modification	Credits Released (+)	Credits Debited (-)	Balance
1	Credit Transactions under Umbrella Plan Agreement (i.e., prior to ILF Final Instrument)	--	--	--	--	8.91	0.00	8.91
2	FDOT (SR 65 Graham Creek Bridge)	SAJ-2010-02204 NW-RPR	\$154,276.00	5/31/2018	6/14/2018	0.00	0.40	8.51
3								8.51
4								8.51
5								8.51
6								8.51
7								8.51
8								8.51
9								8.51
10								8.51
11								8.51
12								8.51
Tates Hell (Whiskey George Unit) Palustrine Forested (CCN 9) Totals:						8.91	0.40	8.51

Shuler Mitigation Area ILF Credit Ledger

Project Watershed: Ochlockonee River

Credit Assessment Methodology: UMAM

Project Status: Project Complete and in Long-term Management (Project Initiated in 2008)

Shuler Mitigation Project Palustrine Forested (CCN 9) Credit Summary	
Potential Credits Approved by USACE =	33.95
Credits Released by USACE =	33.95
Credits Debited =	7.83
Current Shuler ILF Palustrine Forested Credit Balance [Released - Debited] =	26.12

Shuler Palustrine Forested (CCN 9) Credit Ledger

Trans- action Number	Permittee/Credit Recipient Name or CREDIT RELEASE	USACE Permit	Amount of Funds Received from Permittee	Date Funds Received from Permittee	Date of Ledger Modification	Credits Released (+)	Credits Debited (-)	Balance
1	Credit Transactions under Umbrella Plan Agreement (i.e., prior to ILF Final Instrument)	--	--	--	--	33.95	6.05	27.90
2	FDOT (CR 159 Attapulgus Creek Bridge)	SAJ-2016-02453 SP-RLT	\$94,407.00	7/2/2018	7/12/2018	0.00	1.04	26.86
3	FDOT (CR 65A Juniper Creek Bridge)	SAJ-2016-03019 NW-MAO	\$50,547.00	11/30/2018	12/7/2018	0.00	0.16	26.70
4	FDOT (CR 268 High Bridge Road from Joe Adams Road to East Brickyard Road)	SAJ-2018-02592 NW-CDO	\$43,359.00	7/8/2020	7/17/2020	0.00	0.09	26.61
5	FDOT (CR 159 Swamp Creek Bridge)	State 404 Permit 0397915-002-SFG/20	\$86,043.00	2/16/2022	2/17/2022	0.00	0.40	26.21
6	FDOT (CR 67 Yellow Creek Bridge)	State 404 Permit 0404637-002-SFM-39	\$22,494.00	2/16/2022	2/17/2022	0.00	0.09	26.12
7								26.12
8								26.12
9								26.12
10								26.12
11								26.12
12								26.12
Shuler Palustrine Forested (CCN 9) Totals:						33.95	7.83	26.12

Ward Creek West Mitigation Area ILF Credit Ledger

Project Watershed: St. Andrew Bay

Credit Assessment Methodology: WRAP

Project Status: Ongoing (Project Initiated in 2008)

Ward Creek West Mitigation Project Credit Summary (Palustrine Forested, CCN 9)	
Potential Credits Approved by USACE =	173.76
Credits Released by USACE =	120.52
Credits Debited =	67.06
Current Ward Creek West ILF Palustrine Forested Credit Balance [Released - Debited] =	53.46

Ward Creek West Palustrine Forested (CCN 9) Credit Ledger

Trans- action Number	Permittee/Credit Recipient Name or CREDIT RELEASE	USACE Permit	Amount of Funds Received from Permittee	Date Funds Received from Permittee	Date of Ledger Modification	Credits Released (+)	Credits Debited (-)	Balance
1	Credit Transactions under Umbrella Plan Agreement (i.e., prior to ILF Final Instrument)	--	--	--	--	102.77	44.68	58.09
2	FDOT (SR 79 from Steel Field Road to Bay/Washington County Line; administrative update for Condition #8 secondary impacts)	SAJ-2006-4624 IP-DEB	Pre-ILF Funding	March, 2006	3/7/2016	0.00	22.38	35.71
3	CREDIT RELEASE (1st Interim)	--	--	--	8/17/2021	17.75	0.00	53.46
4								53.46
5								53.46
6								53.46
7								53.46
8								53.46
9								53.46
10								53.46
11								53.46
12								53.46
Ward Creek West Palustrine Forested (CCN 9) Totals:						120.52	67.06	53.46

Live Oak Peninsula (Woolley Unit) Mitigation Area ILF Credit Ledger

Project Watershed: Choctawhatchee Bay

Credit Assessment Methodology: UMAM

Project Status: Project Complete and in Long-term Management (Initiated 2009)

Live Oak (Woolley Unit) Mitigation Project Credit Summary (Estuarine Emergent, CCN 2)	
Potential Credits Approved by USACE =	1.32
Credits Released by USACE =	1.32
Credits Debited =	1.32
Current Live Oak Peninsula (Woolley Unit) ILF Estuarine Emergent Credit Balance [Released - Debited] =	0.00

Live Oak Peninsula (Woolley Unit) Estuarine Emergent (CCN 2) Credit Ledger

Trans- action Number	Permittee/Credit Recipient Name or CREDIT RELEASE	USACE Permit	Amount of Funds Received from Permittee	Date Funds Received from Permittee	Date of Ledger Modification	Credits Released (+)	Credits Debited (-)	Balance
1	Credit Transactions under Umbrella Plan Agreement (i.e., prior to ILF Final Instrument)	--	--	--	--	1.32	1.25	0.07
2	FDOT/Skanska USA Civil Southeast, Inc. (US 331 Choctawhatchee Bay Bridge)	SAJ-2013-02362	\$4,900.00	5/20/2014	6/23/2015	0.00	0.07	0.00
3								0.00
4								0.00
5								0.00
6								0.00
7								0.00
8								0.00
9								0.00
10								0.00
11								0.00
12								0.00
Live Oak Peninsula (Woolley Unit) Estuarine Emergent (CCN 2) Totals:						1.32	1.32	0.00

Live Oak Peninsula (Lee Unit) Mitigation Area ILF Credit Ledger

Project Watershed: Choctawhatchee Bay

Credit Assessment Methodology: UMAM

Project Status: Project Complete and in Long-term Management (Initiated 2009)

Live Oak Peninsula (Lee Unit) Mitigation Project Credit Summary (Palustrine Forested, CCN 9)	
Potential Credits Approved by USACE =	2.66
Credits Released by USACE =	2.66
Credits Debited =	2.66
Current Live Oak Peninsula (Lee Unit) ILF Palustrine Forested Credit Balance [Released - Debited] =	0.00

Live Oak Peninsula (Lee Unit) Palustrine Forested (CCN 9) Credit Ledger

Trans- action Number	Permittee/Credit Recipient Name or CREDIT RELEASE	USACE Permit	Amount of Funds Received from Permittee	Date Funds Received from Permittee	Date of Ledger Modification	Credits Released (+)	Credits Debited (-)	Balance
1	Credit Transactions under Umbrella Plan Agreement (i.e., prior to ILF Final Instrument)	--	--	--	--	2.66	2.66	0.00
2								0.00
3								0.00
4								0.00
5								0.00
6								0.00
7								0.00
8								0.00
9								0.00
10								0.00
11								0.00
12								0.00
Live Oak Peninsula (Lee Unit) Palustrine Forested (CCN 9) Totals:						2.66	2.66	0.00

Live Oak Peninsula (Live Oak Point Living Shorelines Unit) Mitigation Area ILF Credit Ledger

Project Watershed: Choctawhatchee Bay

Credit Assessment Methodology: UMAM

Project Status: Ongoing (Initiated 2021)

Live Oak Peninsula (Live Oak Point Living Shorelines Unit) Mitigation Project Credit Summary (Estuarine Emergent, CCN 2)	
Potential Credits Approved by USACE =	2.61
Credits Released by USACE =	0.52
Credits Debited =	0.44
Current Live Oak Peninsula (Live Oak Point Living Shorelines Unit) ILF Estuarine Emergent Credit Balance [Released - Debited] =	0.08

Live Oak Peninsula (Live Oak Point Living Shorelines Unit) Estuarine Emergent (CCN 2) Credit Ledger

Trans- action Number	Permittee/Credit Recipient Name or CREDIT RELEASE	USACE Permit	Amount of Funds Received from Permittee	Date Funds Received from Permittee	Date of Ledger Modification	Credits Released (+)	Credits Debited (-)	Balance
1	CREDIT RELEASE	--	--	--	3/25/2021	0.52	0.00	0.52
2	FDOT (US 98 Brooks Bridge)	ST404-0239218-004-SF1/46	\$102,404.30	10/27/2022	12/14/2022	0.00	0.44	0.08
3								0.08
4								0.08
5								0.08
6								0.08
7								0.08
8								0.08
9								0.08
10								0.08
11								0.08
12								0.08
Live Oak Peninsula (Live Oak Point Living Shorelines Unit) Estuarine Emergent (CCN 2) Totals:						0.52	0.44	0.08