

2023 Estimated Water Use

in the

Northwest Florida Water Management District

SUMMARY REPORT



March 2025

TRS-23-1

Background and Methods

Pursuant to Florida Statutes,¹ quantifying existing legal uses of water or estimating water use is foundational data for Northwest Florida Water Management District (NFWMD or District) water supply assessments, regional water supply plans, groundwater models and MFL technical assessments, and consumptive use permitting. Existing water use is the baseline data to develop water demand projections and future reasonable-beneficial water use needs.

As noted in rule (62-40.540(6), F.A.C.), *“The Districts shall implement a strategy for measuring, estimating, and reporting withdrawal and use of water by permitted and exempted users. ... The Districts are encouraged to summarize and analyze water use in the District at least annually.”* Also by rule (62-40.531, F.A.C.), water use estimates and projections are to be provided for the following use classes:

1. Public Supply,
2. Domestic Self-Supply (DSS),
3. Agricultural,
4. Recreational (golf course, landscape irrigation),
5. Industrial-Commercial-Institutional (ICI), and
6. Thermolectric (Power Generation).

Estimates are based on best available data and primarily rely on audited reports from permittees with Individual Water Use Permits (IWUPs) that have an average daily rate equal to or greater than 0.1 million gallons per day (mgd) of water use or permitted allocation, or that have permit conditions requiring annual water use reporting, for example, due to being within a Water Resource Caution Area or Area of Resource Concern. With numerous small towns and rural areas in NFWMD, in an average year 30 percent of IWUPs have average daily withdrawal rates less than 0.1 mgd. Estimates include water

¹ Sections 373.036 and 373.709, Florida Statutes (F.S.).

² Additional water use estimates include IWUPs and other small-scale recreational wells with General Water Use Permits (GWUPs) with no reporting requirements.

withdrawals from six different groundwater aquifer systems and from surface water sources.

Public supply data include estimates of water production, transfers, and demand; as well as estimates of populations served and per-capita water use rates. Domestic self-supply is estimated based on population and a per capita use rate. Agricultural water use is reported, but the total estimate is based on the Florida Department of Agriculture and Consumer Services (FDACS) Florida Statewide Agricultural Irrigation Demand (FSAID) estimates. Recreational irrigation estimates are a combination of reported pumpage and additional estimated use.² Industrial-commercial-institutional (ICI) and power generation water use are estimated from reported pumpage and adjusted for returns. Power and ICI water that is withdrawn for cooling purposes and returned to the source is not, for planning or estimating purposes, considered consumptive use.

Public supply reported pumpage and other supporting data include, by default, seasonal water use. Seasonal residents, which include migrant workers, are estimated to affect public supply and DSS water use in all 16 counties. Therefore, population estimates for public supply, DSS, and by county include seasonal resident adjustments.

This report summarizes the District’s reported and estimated water use in calendar year 2023. An overview of District land use and water supply planning regions is illustrated in Figure 1, below.

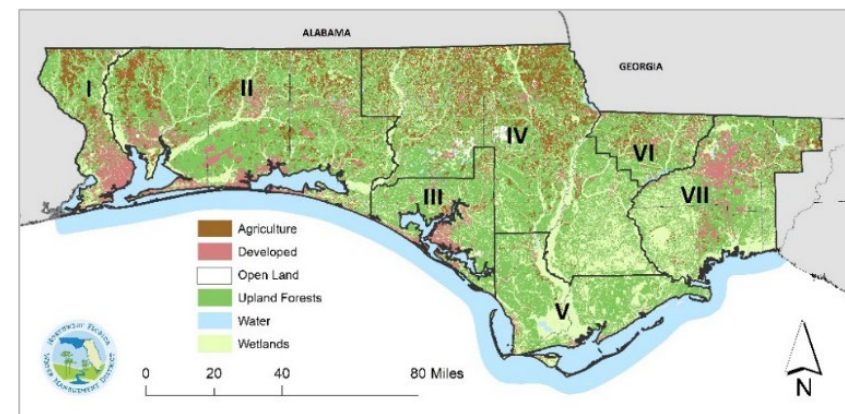


Figure 1. NFWMD Land Use and Planning Regions (I – VII)

2023 Water Use Summary

As illustrated in Figure 1, the District’s 16 counties are organized into seven water supply planning regions:

- I. Escambia County
- II. Okaloosa, Santa Rosa, and Walton counties
- III. Bay County
- IV. Calhoun, Holmes, Jackson, Liberty, and Washington counties
- V. Franklin and Gulf counties
- VI. Gadsden County
- VII. Leon, Wakulla, and (NFWMD portion of) Jefferson counties

District water use in 2023 totaled more than 310 mgd and is summarized by region and water use category in Table 1 and Figure 2.

Region II accounted for 27 percent of all District estimated water use in 2023, with more than 84 mgd. Region I was the second largest with 77 mgd or 25 percent of the total water use. Region IV was the third largest in water use, followed by Regions III and VII.

Table 1. Estimated 2023 Water Use by Category and by Region (mgd)

Planning Region	Public Supply	Domestic Self-Supply	Agriculture	Recreation	ICI	Power Generation	TOTAL WATER USE (mgd)
Region I	40.07	2.29	3.09	2.81	20.90	8.01	77.17
Region II	60.37	4.13	3.31	11.40	4.89	-	84.10
Region III	21.37	2.70	0.91	2.16	3.16	3.71	34.01
Region IV	5.66	6.37	36.60	0.94	1.61	0.30	51.48
Region V	4.43	0.54	0.30	0.29	0.23	-	5.80
Region VI	4.08	1.19	4.92	0.16	0.47	-	10.78
Region VII	33.21	4.77	1.59	3.42	1.15	2.71	46.85
TOTALS	169.19	21.94	50.72	21.19	32.42	14.73	310.19

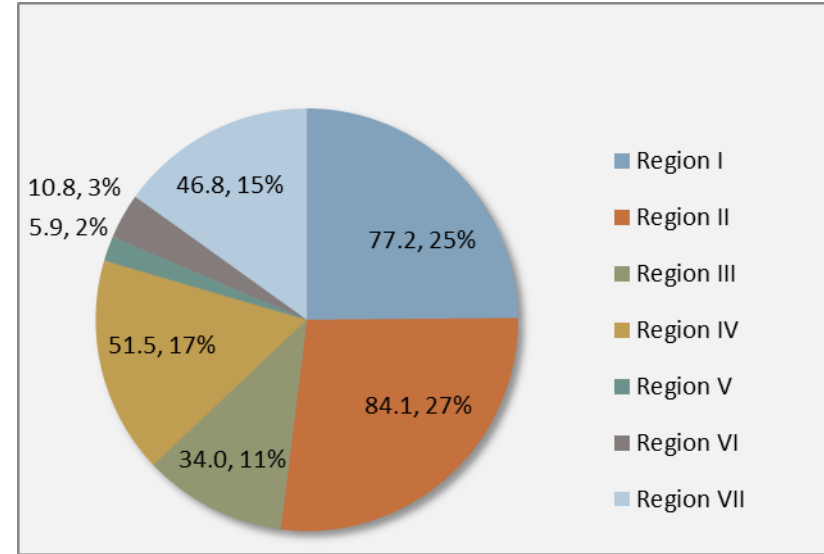


Figure 2. Estimated Water Use by Planning Region (mgd)

In 2023, public supply accounted for more than half of all Districtwide water use (169 mgd), followed by agriculture at 50 mgd, and then ICI (32 mgd). Recreation, DSS, and power generation range from five to seven percent of total water use (Table 1 and Figure 4).

Public supply has consistently been the largest water use category Districtwide since 1995 (see Appendix, page A.20). Public supply water use is concentrated in urbanized portions of regions I, II, III, and VII (Table 1 and Figure 2). Region IV, predominately rural and agricultural, had 29 percent of all DSS and 72 percent of all agricultural water use. Region II had 53 percent of all recreational water use. Region I had 64 percent of all industrial-commercial-institutional (ICI) self-supplied water use while Regions III and VII had 25 percent and 18 percent, respectively, of power generation water use.

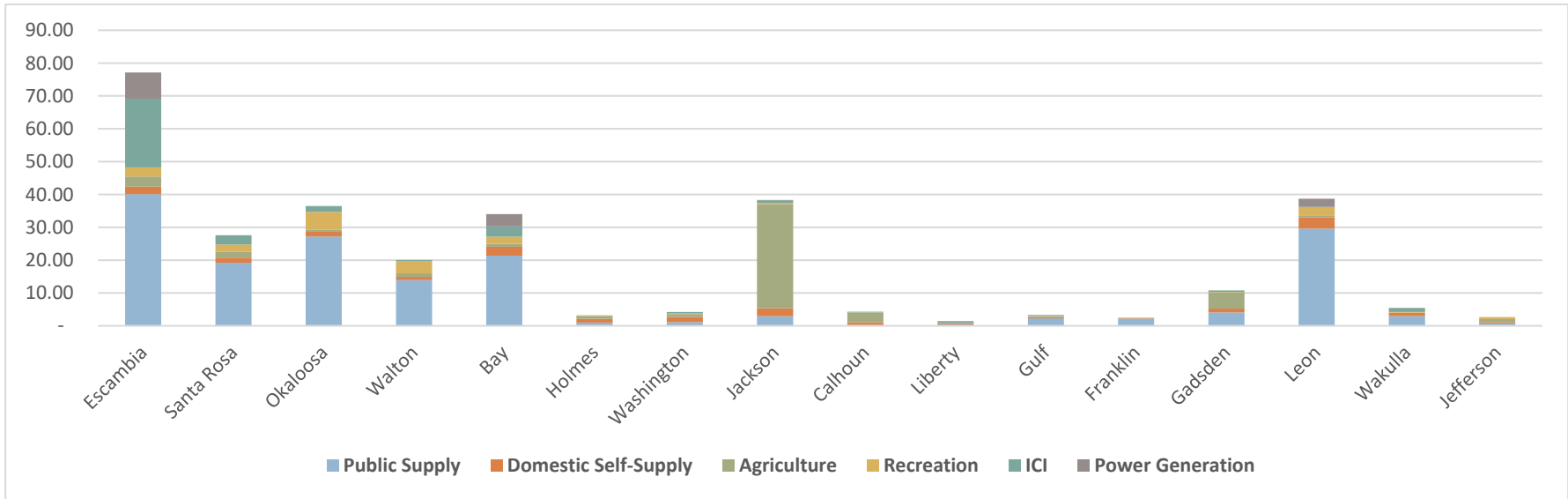


Figure 3. Total Water Use by County and Water Use Category (mgd)

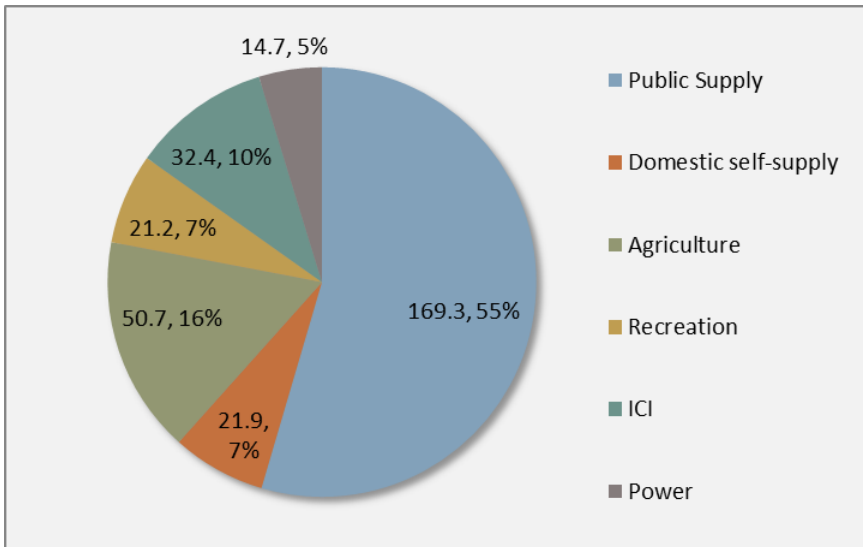


Figure 4. Total Water Use by Category (mgd)

Population Estimates

The University of Florida, Bureau of Business and Economic Research (BEBR), estimated the 2023 District population to be 1,565,034 (Table 2).

Table 2. Population Estimates (BEBR 2023)

REGION	BEBR Permanent Populations	Seasonal Adjustments	TOTAL ² Population Estimates
Region I	333,452	10,670	344,122
Region II	505,374	64,626	570,000
Region III	187,545	22,505	210,050
Region IV	116,182	3,566	119,748
Region V	29,294	8,650	37,944
Region VI	44,421	1,066	45,487
Region VII ¹	348,766	3,698	352,463
TOTALS	1,565,034	114,782	1,679,815

¹ Estimated NFWMD share of Jefferson County only.

² Total population estimates, including seasonal adjustments.

The effects of seasonality were estimated to add an equivalent of 114,782 residents for a total adjusted population estimate of 1,679,815. Approximately 84 percent of District residents are estimated to be served by public supply utilities.

The 2023 BEBR Districtwide population estimate is 72,353 more than 2020, following the growth trends over the past few years throughout Florida.

Table 3. BEBR Population Estimates 2020-2023

	BEBR Population Estimates		2020-2023 Change	
	2023	2020	Population	Percent
Escambia	333,452	321,905	11,547	3.6%
Okaloosa	219,260	211,668	7,592	3.6%
Santa Rosa	202,772	188,000	14,772	7.9%
Walton	83,342	75,305	8,037	10.7%
Bay	187,545	175,216	12,329	7.0%
Calhoun	13,816	13,648	168	1.2%
Holmes	19,910	19,653	257	1.3%
Jackson	48,982	47,319	1,663	3.5%
Liberty	7,977	7,974	3	0.0%
Washington	25,497	25,318	179	0.7%
Franklin	12,971	12,451	520	4.2%
Gulf	16,323	14,192	2,131	15.0%
Gadsden	44,421	43,826	595	1.4%
Jefferson ^(NWF Only)	10,874	10,244	630	6.1%
Leon	301,724	292,198	9,526	3.3%
Wakulla	36,168	33,764	2,404	7.1%
TOTALS	1,565,034	1,492,681	72,353	4.8%

Rainfall and Drought

Precipitation varies regionally with more rain naturally occurring in the western panhandle and lower rainfall levels typical in northeastern parts of the District (Figure 5). The 2023 annual average rainfall Districtwide at nearly 62.19 inches was slightly below the normal annual average of 62.2 inches (Figure 5).

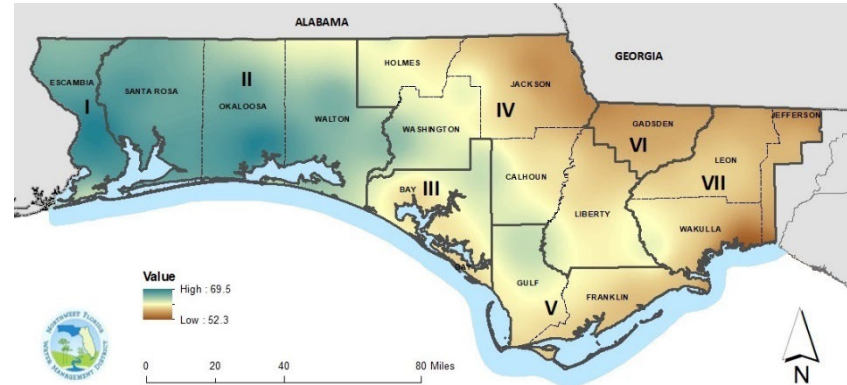


Figure 5. Normal Average Annual Precipitation (1991-2020) In/Yr³

Agriculture and recreation are the two water use categories most affected by rainfall and drought. More precipitation information is in the “Agricultural and Recreational Irrigation” section.

Water use in the public supply and domestic self-supply categories typically increases by an estimated seven percent in dry years (NFWFMD, 2023). Power generation and ICI drought-year demands are not anticipated to differ from water demands during an average rainfall year.

³ Source: PRISM Climate Group, Oregon State University, <http://prism.oregonstate.edu>. Data created Jan 10, 2024.

Public Supply and Domestic Self-Supply

Public supply water use in 2023 was estimated to be 169.19 mgd, accounting for more than half of all water use Districtwide. With seasonal adjustments, estimated public supply populations served totaled 1.41 million. Approximately 54 percent of all public supply water use was in the District’s three most urbanized counties – Escambia, Bay, and Leon – and nearly 92 percent was in regions I, II, III and VII combined.

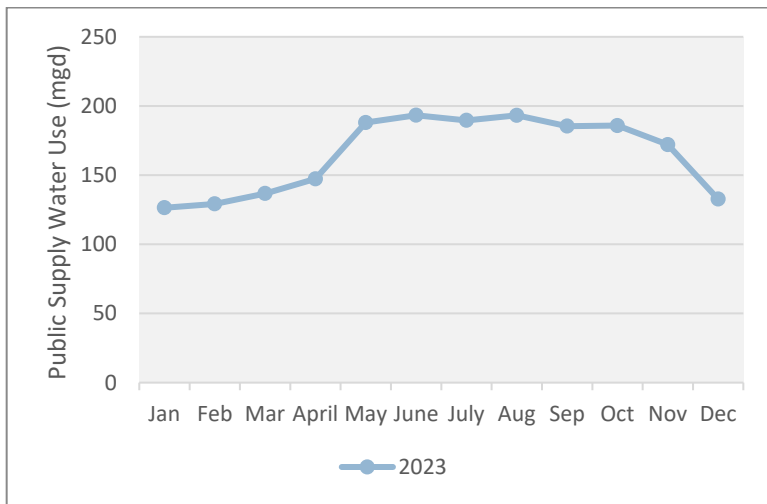


Figure 6. Monthly Average Public Supply Water Use (mgd)

Districtwide monthly average public supply water use during 2023 is illustrated in Figure 6. and may vary spatially. The lowest water use generally occurs during winter months. Higher water consumption from May through October is likely due to landscape irrigation needs or the impacts from seasonal residents in some communities, or both.

⁴ Gallons per capita per day (gpcd).

The estimated 2023 DSS population was 266,593. With a domestic per capita water use rate of 88.67 gpcd⁴ (USGS, 2014), the estimated domestic self-supply (DSS) water use was approximately 17.98 mgd.

Together, public supply and DSS comprised 62 percent of all water use Districtwide in 2023.

Per Capita Water Use Rates

The 2023 Districtwide public supply per capita water use rates were 115.3 gpcd gross and 64.7 gpcd residential. Both gross and residential per capita rates have exhibited a general downward trend (Figure 7). See Appendix, page A.19, for more information.

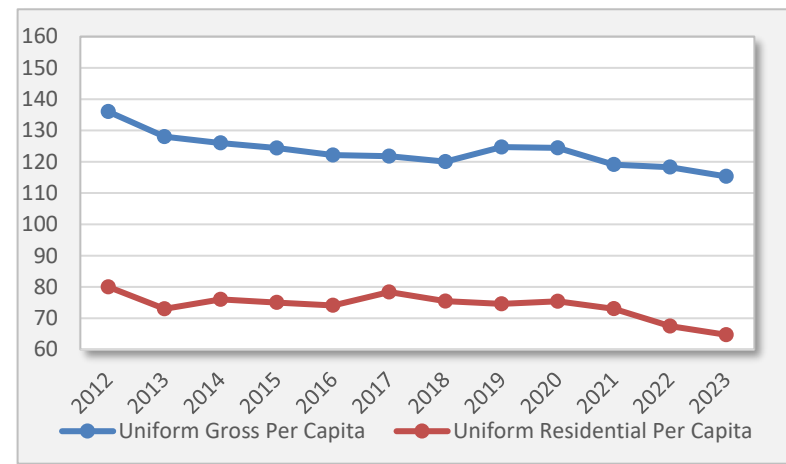


Figure 7. Trends in Per Capita Water Use Rates 2012-2023 (gpcd)

Five-year average per capita rates over the period 2019-2023 are:

- Average Uniform Gross Per Capita Use: 120.4 gpcd
- Average Uniform Residential Per Capita Use: 71.0 gpcd

Agriculture and Recreation

The Districtwide annual average rainfall in 2023 was slightly below average (Figure 8). From 2011 to 2023, data appears to indicate an inverse relationship between reported agricultural water use and annual average precipitation.

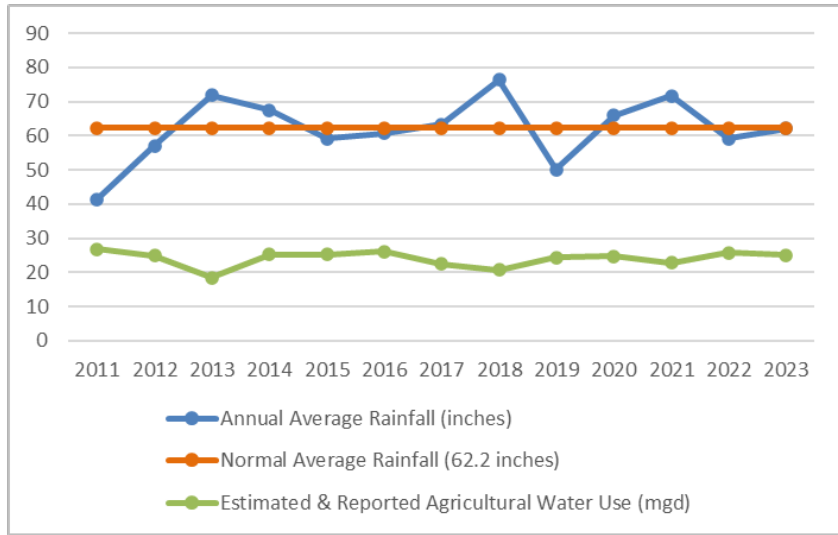


Figure 8. Rainfall and Agricultural Reported Water Use 2011-2023

The estimated and reported agricultural water use associated with IWUPs in 2023 was 25.1 mgd, approximately 49 percent of the most recent FSAID total agricultural estimate of 50.72 mgd (2022 data). Ninety-five percent of reported agricultural water withdrawals are from groundwater. Eighty-seven percent of the reported surface water withdrawals for agricultural water use were within Gadsden County.

Monthly average reported agricultural water use during calendar years 2021, 2022, and 2023 is illustrated in Figure 9.

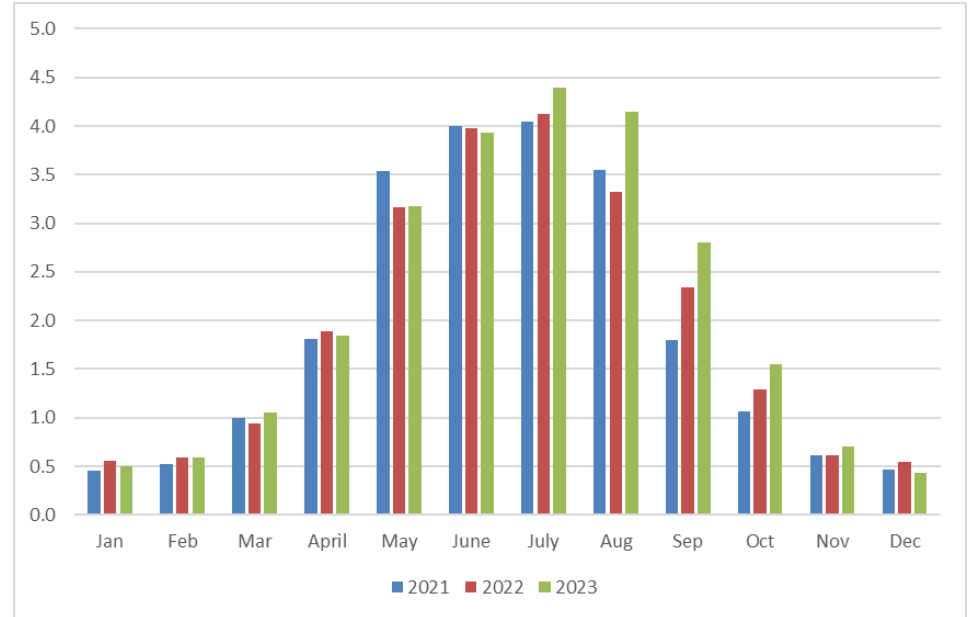


Figure 9. Reported Agricultural Water Use by Month (mgd)

Recreational water uses include golf course and landscape irrigation, and water-based recreation. About 70 percent of small-scale irrigation GWUP wells in NFWFMD are estimated to be within Region II. Also, Region II had 54 percent of the reported and 71 percent of the total estimated recreational water use Districtwide.

The total estimated recreational water use in 2023 was 21.18 mgd. Reported recreational water use was 11.98 mgd or 56 percent of the total. The sources of reported recreational water use are approximately 55% groundwater and 45% surface water. Other sources of water may include reuse of reclaimed water or co-mingling of surface, ground, and reuse waters, which were not analyzed at the time of this report.

Collectively, agricultural and recreational uses were estimated to comprise 23 percent of all water use Districtwide in 2023.

Power Generation and ICI

Thermoelectric power generation and ICI self-supplied water use estimates in 2023, adjusted for recirculation, were approximately 14.73 mgd and 32.415 mgd respectively. Power generation and ICI together comprised 15 percent of all 2023 water use Districtwide.

Seventy-four percent of ICI self-supply water use occurred in Escambia and Bay counties, fifteen percent in Region II, and 11 percent in the remaining District counties. Additional ICI water users are served by public supply utilities. Of the total ICI self-supplied water use, 89 percent was withdrawn from groundwater sources and 11 percent from surface waters.

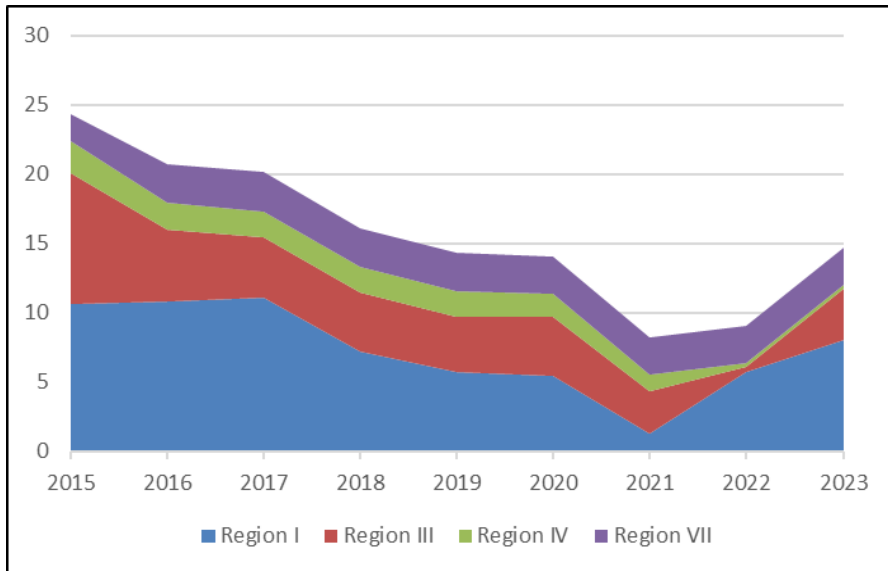


Figure 10. Trends in Power Water Use 2015 to 2023 (mgd)

Figure 10 illustrates total power water use from 2015 to 2023 in regions that have thermoelectric power generation facilities. Factors contributing to declining water use trends may include conservation, system efficiencies, and fuel conversions. However, an increase in power water use occurred during 2021 through 2023.

Water Withdrawals by Water Source

Primary groundwater resources are the Floridan aquifer across much of northwest Florida and the sand-and-gravel aquifer in western parts of the District. A major surface water resource is Deer Point Lake Reservoir in Bay County.

Approximately 69 percent of water withdrawals in 2023 were from groundwater sources, 13 percent from surface waters, and 18 percent “Other Water” – which are unknown or uncertain sources of water, attributed to DSS and to additional agricultural and recreational water use estimates (Figure 11). Withdrawals from the Floridan aquifer accounted for an estimated 40 percent of all water use and over half of all groundwater withdrawals. Approximately 41 percent of groundwater withdrawals were from the sand-and-gravel aquifer. Less than one percent of groundwater pumped was from other aquifers, including the intermediate, Claiborne, and surficial aquifer systems.

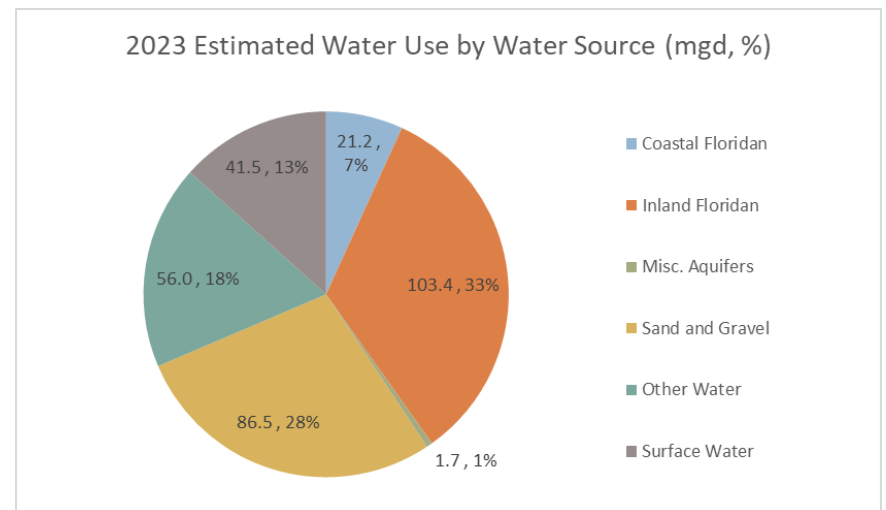


Figure 31. NFWFMD 2023 Water Use by Water Source

Data Quality and Uncertainty Analysis

In 2023, 74 percent (230 mgd) of all estimated water use was from reported and audited compliance data submitted by permittees that have an Individual Water Use Permit (IWUP). Public supply and ICI estimates are from reported and audited pumping reports. The remaining water use estimates are generated or affected by the following:

- Domestic Self-Supply (DSS) – All DSS use is estimated at the county level based on the estimated population that is not served by public supply and a domestic per capita water use rate provided by USGS.
- Agriculture – Forty-four percent of the total FDACS/FSAID⁵ estimate is from NFWFMD reported and audited pumping reports.
- Recreation – Forty-nine percent of the recreational estimate was obtained from audited pumping reports. The total includes water use estimated from small-scale irrigation wells.
- Power – Some power generating facilities with DEP Site Certifications do not have an IWUP or have limited IWUP compliance reporting conditions. These facilities make up nearly 6.4 mgd of the total and contribute to uncertainty.

Also, changes in regulatory criteria, type and frequency of compliance reports submitted by permittees, and changes in the number of permittees with reporting requirements can all affect the availability and quality of water use and population data.

The District continues refining data and methods to enhance population estimates for public supply and DSS, including how to

⁵ The FDACS/FSAID agriculture estimates are typically completed by June following water management district annual estimates, in this case, FSAID IX released in June

account for ICI institutional residents and limited public supply populations in overall population analyses.

Inmate populations are included in BEBR estimates. In 2023, BEBR estimated that NFWFMD had close to seven percent of the total state population and 29 percent of Florida’s inmate population. Share of inmate populations by county are in Table 4.

Correctional facility IWUPs often provide water for multiple use categories (e.g., agriculture, heating and cooling, landscape irrigation) and may still be separately dependent on a public supply utility for potable water supplies.

Table 4. BEBR 2021 Total and Inmate Population Estimates

COUNTY	Total BEBR Estimate	Inmates Estimate	Net Total (less inmates)	Inmates as a % of Total BEBR	Inmates % of Net Total
LIBERTY	7,977	1,468	6,509	18.4%	22.6%
JACKSON	48,982	5,871	43,111	11.9%	13.6%
CALHOUN	13,816	1,333	12,483	9.6%	10.7%
GULF	16,323	1,717	14,606	10.5%	11.8%
WAKULLA	36,168	2,430	33,738	6.7%	7.2%
FRANKLIN	12,971	959	12,012	7.4%	8.0%
WASHINGTON	25,497	1,564	23,933	6.1%	6.5%
GADSDEN	44,421	3,118	41,303	7.0%	7.6%
HOLMES	19,910	1,308	18,602	6.8%	7.0%
SANTA ROSA	202,772	4,278	198,494	2.1%	2.2%
WALTON	83,342	1,377	81,965	1.7%	1.7%
ESCAMBIA	333,452	1,967	331,485	0.6%	0.6%
BAY	187,545	1,128	186,417	0.6%	0.6%
OKALOOSA	219,260	1,416	217,844	0.7%	0.7%
LEON	301,724	1,136	300,588	0.4%	0.4%
JEFFERSON ^(NWF)	10,874	0	10,874	0.0%	0.0%
TOTALS	1,565,034	31,070	1,533,964	1.99%	2.03%

2024 was prepared with 2022 water use data. The water demand estimates are modeled based on average hypothetical rainfall.

Acronyms

BEBR	Bureau of Business and Economic Research
DSS	Domestic Self-Supply
F.A.C.	Florida Administrative Code
FDACS	Florida Department of Agriculture and Consumer Services
F.S.	Florida Statutes
FSAID	Florida Statewide Agricultural Irrigation Demand
gpcd	Gallons per Capita per Day
GWUP	General Water Use Permit
ICI	Industrial-Commercial-Institutional
IWUP	Individual Water Use Permit
mgd	Million Gallons per Day
MFLs	Minimum Flows and Minimum Water Levels
USGS	United States Geological Survey

References and Additional Information

- Bureau of Business and Economic Research (BEBR). 2023 *Florida Estimates of Population 2023*. University of Florida, College of Liberal Arts and Sciences, Population Studies Program. <https://www.bebr.ufl.edu/population>
- Florida Department of Agriculture and Consumer Services (FDACS) and The Balmoral Group (TBG). June 30, 2024 *Florida Statewide Agricultural Irrigation Demand 2022-2050 Agricultural Water Demands* (FSAID XI). <https://www.fdacs.gov/Agriculture-Industry/Water/Agricultural-Water-Supply-Planning>
- Northwest Florida Water Management District (NFWFMD). December 2023. *2023 Water Supply Assessment Update*. WRA 23-01. <https://www.nfwwater.com/Water-Resources/Water-Supply-Planning/Water-Supply-Assessments>.
- U.S. Geological Survey (USGS). 2014. *Water Withdrawals, Use, and Trends in Florida, 2010*. Data supplied by Mr. Rich Marella, USGS Florida Water Science Center, Orlando, Florida.

APPENDIX CONTENTS

Page(s)

Districtwide Water Use and Population Estimates:

Total Estimated Water Use by Category (mgd).....	A.01
Total Estimated Water Withdrawals by Source (mgd).....	A.02
Population Estimates - County, Public Supply Utility, and Domestic Self-Supply.....	A.03

Summary Data Tables by Water Use Category:

1. Public Supply

1.1 Public Supply Water Demand, Populations Served, and Per Capita Water Use.....	A.04
1.2 Public Supply Water Withdrawals by Source (mgd).....	A.05
1.3 Public Supply Water Demand, Populations Served, and Per Capita Water Use - by Utility.....	A.06 – A.10

2. Domestic Self-Supply

2.1 Domestic Self-Supply Population and Water Use Estimates (mgd).....	A.11
2.2 Domestic Self-Supply Population Estimates Over Time.....	A.12

3. Agriculture

3.1 Agricultural Water Use - Reported and Total Estimates (mgd).....	A.13
3.2 Agricultural Reported Water Use by Source (mgd).....	A.14

4. Recreational

4.1 Recreational Water Use - Reported and Total Estimates (mgd).....	A.15
4.2 Recreational Reported Water Use by Source (mgd).....	A.16

5. Industrial-Commercial-Institutional

5.1 Industrial-Commercial-Institutional Reported Water Use by Source (mgd).....	A.17
---	------

6. Thermoelectric Power Generation

6.1 Thermoelectric Power Generation Reported Water Use by Source (mgd).....	A.18
---	------

Water Use Trends:

Public Supply Per Capita Water Use Over Time (gpcd).....	A.19
Trends in Share of and Total Water Use Estimates by Water Use Category (mgd).....	A.20

Total Estimated Water Use by Category (mgd)

Planning Region	County / Region	Public Supply	Domestic Self-Supply	Agriculture ⁽¹⁾	Recreation ⁽²⁾	ICI	Power Generation	TOTAL ESTIMATED WATER USE (mgd)
I	Escambia	40.068	2.288	3.091	2.813	20.900	8.011	77.171
	Region I Total	40.068	2.288	3.091	2.813	20.900	8.011	77.171
II	Okaloosa	27.210	1.623	0.473	5.389	1.766	-	36.461
	Santa Rosa	19.226	1.532	1.776	2.230	2.810	-	27.573
	Walton	13.932	0.975	1.058	3.786	0.315	-	20.066
	Region II Total	60.368	4.131	3.306	11.405	4.891	-	84.100
III	Bay	21.369	2.700	0.911	2.160	3.160	3.709	34.009
	Region III Total	21.369	2.700	0.911	2.160	3.160	3.709	34.009
IV	Calhoun	0.220	0.865	2.981	0.006	0.240	-	4.312
	Holmes	0.979	1.139	0.904	0.215	-	-	3.237
	Jackson	2.925	2.415	31.733	0.387	0.771	0.095	38.326
	Liberty	0.416	0.357	0.101	0.002	0.332	0.206	1.413
	Washington	1.117	1.590	0.886	0.332	0.272	-	4.196
	Region IV Total	5.656	6.365	36.605	0.943	1.615	0.301	51.484
V	Franklin	2.244	0.130	0.010	0.171	0.017	-	2.573
	Gulf	2.275	0.408	0.295	0.116	0.217	-	3.311
	Region V Total	4.519	0.538	0.305	0.287	0.234	-	5.884
VI	Gadsden	4.081	1.152	4.919	0.161	0.468	-	10.781
	Region VI Total	4.081	1.152	4.919	0.161	0.468	-	10.781
VII	Jefferson ^(NWF Only)	0.634	0.438	1.009	0.580	-	-	2.661
	Leon	29.597	3.414	0.465	2.634	0.097	2.500	38.707
	Wakulla	2.983	0.917	0.111	0.206	1.054	0.207	5.479
	Region VII Total	33.213	4.769	1.586	3.421	1.151	2.707	46.847
TOTALS		169.275	21.941	50.722	21.190	32.418	14.729	310.275
Percent of Total Water Use:		54.6%	7.1%	16.3%	6.8%	10.4%	4.7%	100%

Total annual average daily rate (ADR) estimated water use in million gallons per day (mgd).

(1) FSAID XI - 2023 estimated water use based on average hypothetical precipitation.

(2) Estimate of 2023 reported recreational water use and additional estimating methods and data used in the 2023 WSA.

Total Estimated Water Use by Source (mgd)

Planning Region	County / Region	Coastal Floridan	Inland Floridan	Inter-mediate	Claiborne	Sand and Gravel	Surficial	Total Ground-water	Total Other Water ⁽¹⁾	Total Surface Water	TOTAL ESTIMATED WATER USE (mgd)
I	Escambia	-	-	-	-	62.264	0.159	62.423	6.428	8.320	77.171
	Region Totals	-	-	-	-	62.264	0.159	62.423	6.428	8.320	77.171
II	Okaloosa	16.034	9.379	-	-	1.789	-	27.201	4.005	1.818	33.024
	Santa Rosa	0.871	0.362	-	-	21.446	-	22.680	4.504	0.390	27.573
	Walton	1.373	16.739	0.219	-	0.983	0.210	19.523	2.664	1.316	23.503
	Region Totals	18.278	26.480	0.219	-	24.218	0.210	69.404	11.173	3.523	84.100
III	Bay	0.213	2.908	-	-	0.015	0.660	3.795	4.548	25.665	34.009
	Region Totals	0.213	2.908	-	-	0.015	0.660	3.795	4.548	25.665	34.009
IV	Calhoun	-	3.464	-	-	-	-	3.464	0.810	0.037	4.312
	Holmes	-	0.669	-	0.271	-	-	0.940	2.258	-	3.198
	Jackson	-	21.484	-	0.078	-	-	21.562	16.553	0.210	38.326
	Liberty	-	0.918	-	-	-	0.033	0.952	0.459	0.003	1.413
	Washington	-	1.746	-	-	-	-	1.746	2.473	0.016	4.235
	Region Totals	-	28.282	-	0.350	-	0.033	28.665	22.553	0.266	51.484
V	Franklin	2.262	-	-	-	-	-	2.262	0.200	0.111	2.573
	Gulf	0.491	0.680	0.023	-	-	0.023	1.217	0.526	1.567	3.311
	Region Totals	2.753	0.680	0.023	-	-	0.023	3.479	0.727	1.678	5.884
VI	Gadsden	-	5.741	-	-	-	-	5.741	3.863	1.176	10.781
	Region Totals	-	5.741	-	-	-	-	5.741	3.863	1.176	10.781
VII	Jefferson ^(NWF Only)	-	1.686	-	-	-	-	1.686	0.974	-	2.661
	Leon	-	34.132	-	-	-	-	34.132	4.452	0.668	39.253
	Wakulla	-	3.491	-	-	-	-	3.491	1.235	0.207	4.933
	Region Totals	-	39.309	-	-	-	-	39.309	6.662	0.876	46.847
DISTRICT TOTALS		21.243	103.401	0.242	0.350	86.497	1.085	212.818	55.954	41.503	310.275
Percentages		10.0%	48.6%	0.1%	0.2%	40.6%	0.5%	68.6%	18.0%	13.4%	100%

(1) "Other Water" refers to estimated withdrawals, but source is unknown or uncertain. Domestic Self-Supply (DSS) water use is estimated with population estimates and a per capita water use rate: groundwater withdrawn from domestic or limited public supply wells is assumed but no specific water source or aquifer is identified. Additional estimating methods for Agriculture and Recreational Irrigation also have uncertain water sources. Gadsden County agricultural water use is on average 50-50 surface and groundwater. Recreational water use is often a complex water flow system of both ground and surface waters and at times co-mingled with reclaimed water.

Population Estimates - County, Public Supply Utility, and Domestic Self-Supply

Planning Region	County / Region	2010-2020 Population Change % ⁽¹⁾	BEBR 2023 County Permanent Populations ⁽²⁾	Seasonal Rate % County Average	County Seasonal ⁽³⁾ Adjustments	TOTAL ⁽⁴⁾ County Population Estimates	Public Supply Populations Served ⁽⁵⁾	% of TOTAL	DSS-Other Population Estimates ⁽⁶⁾	% of TOTAL
I	Escambia	12.0%	333,452	3.2%	10,670	344,122	316,328	91.9%	27,795	8.1%
	Total/Average	12.0%	333,452	3.2%	10,670	344,122	316,328	91.9%	27,795	8.1%
II	Okaloosa	21.3%	219,260	9.0%	19,733	238,993	219,270	91.7%	19,724	8.3%
	Santa Rosa	34.0%	202,772	2.0%	4,055	206,827	188,211	91.0%	18,616	9.0%
	Walton	51.4%	83,342	49.0%	40,838	124,180	112,331	90.5%	11,848	9.5%
	Total/Average	30.5%	505,374	20.0%	64,626	569,999	519,813	91.2%	50,188	8.8%
III	Bay	11.1%	187,545	12.0%	22,505	210,051	177,249	84.4%	32,802	15.6%
	Total/Average	11.1%	187,545	12.0%	22,505	210,051	177,249	84.4%	32,802	15.6%
IV	Calhoun	-5.5%	13,816	3.0%	414	14,231	3,722	26.2%	10,508	73.8%
	Holmes	-0.1%	19,910	1.0%	199	20,109	6,276	31.2%	13,834	68.8%
	Jackson	-1.5%	48,982	3.0%	1,469	50,451	21,111	41.8%	29,341	58.2%
	Liberty	-4.6%	7,977	9.0%	718	8,695	4,356	50.1%	4,339	49.9%
	Washington	2.4%	25,497	3.0%	765	26,262	6,946	26.4%	19,316	73.6%
	Total/Average	-1.2%	116,182	3.8%	3,566	119,748	42,411	35.4%	77,337	64.6%
V	Franklin	12.3%	12,971	39.0%	5,059	18,030	16,453	91.3%	1,577	8.7%
	Gulf	2.9%	16,323	22.0%	3,591	19,914	14,957	75.1%	4,958	24.9%
	Total/Average	6.9%	29,294	30.5%	8,650	37,944	31,410	82.8%	6,535	17.2%
VI	Gadsden	-4.2%	44,421	2.4%	1,066	45,487	31,489	69.2%	13,998	30.8%
	Total/Average	-4.2%	44,421	2.4%	1,066	45,487	31,489	69.2%	13,998	30.8%
VII	Jefferson ^(NWF Only)	4.4%	10,874	3.5%	381	11,254	5,935	52.7%	5,319	47.3%
	Leon	9.5%	301,724	0.5%	1,509	303,233	261,756	86.3%	41,476	13.7%
	Wakulla	17.5%	36,168	5.0%	1,808	37,976	26,833	70.7%	11,143	29.3%
	Total/Average	10.1%	348,766	3.0%	3,698	352,464	294,525	83.6%	57,938	16.4%
TOTALS/AVERAGES		14.9%	1,565,034	7.3%	114,782	1,679,815	1,413,223	84.1%	266,593	15.9%

(1) Source: University of Florida (UF), Bureau of Economic and Business Research (BEBR), Population Studies Program, <https://www.bebr.ufl.edu/population>.

(2) UF BEBR, Population Studies Program, Vol. 54, Bulletin 189, April 2023. Permanent population estimates only, but includes estimated inmate populations.

(3) Estimated seasonal populations based on county average seasonal rates applied to BEBR population estimates.

(4) Total county populations adjusted by adding the estimated seasonal populations to BEBR estimate.

(5) The population served by each public supply utility service area is estimated from review of all available data, including compliance submissions, and include seasonal population estimates where applicable.

(6) Net Domestic Self-Supply (DSS) population estimates are derived by subtracting public supply utility populations served from adjusted county totals. This estimate includes other miscellaneous populations, e.g., small public systems and correctional facility inmates not otherwise accounted for.

1.1 Public Water Supply Withdrawn, Demand, Populations Served, and Per Capita Water Use

Planning Region	County / Region	Withdrawals and Water Demand (mgd)				Populations and Per Capita Water Use (gpcd)		
		Reported Pumpage	Imports	Exports	Finished Water Demand	Public Supply Adjusted ⁽¹⁾ Population Served	Average GROSS Per Capita Water Use	Average RESIDENTIAL Per Capita Water Use
I	Escambia	40.068	-	-	40.068	318,369	125.85	80.60
	Totals/Average Per Capita	40.068	0.000	0.000	40.068	318,369	125.85	80.60
II	Okaloosa	23.773	3.437	-	27.210	240,030	113.36	59.15
	Santa Rosa	19.226	6.378	6.378	19.226	191,319	100.26	64.23
	Walton	17.369	2.849	6.285	13.932	123,352	112.95	66.58
	Totals/Average Per Capita	60.368	12.663	12.663	60.368	554,702	108.83	62.55
III	Bay	21.369	17.195	17.195	21.369	185,892	103.25	49.22
	Totals/Average Per Capita	21.369	17.195	17.195	21.369	185,892	103.25	49.22
IV	Calhoun	0.220	-	-	0.220	3,722	59.06	68.85
	Holmes	0.940	0.039	-	0.979	6,276	156.03	58.01
	Jackson	2.925	-	-	2.925	20,827	140.43	61.12
	Liberty	0.416	-	-	0.416	4,356	95.53	89.11
	Washington	1.155	-	0.039	1.117	6,782	164.64	92.47
	Totals/Average Per Capita	5.656	0.039	0.039	5.656	41,963	134.79	69.31
V	Franklin	2.244	0.000	0.000	2.244	17,635	127.27	66.22
	Gulf	2.275	-	-	2.275	15,621	145.63	53.31
	Totals/Average Per Capita	4.519	0.000	0.000	4.519	33,256	135.89	60.16
VI	Gadsden	4.081	-	-	4.081	31,919	127.85	78.59
	Totals/Average Per Capita	4.081	0.000	0.000	4.081	31,919	127.85	78.59
VII	Jefferson ^(NWF Only)	0.634	-	-	0.634	6,626	95.63	72.92
	Leon	30.143	-	0.546	29.597	265,696	111.39	57.83
	Wakulla	2.437	0.546	-	2.983	28,799	103.57	76.92
	Totals/Average Per Capita	33.213	0.546	0.546	33.213	301,121	110.30	59.98
DISTRICT TOTALS/AVERAGE		169.275	30.443	30.443	169.275	1,467,221	115.37	64.74

(1) Populations served include seasonal resident adjustments

1.2 Public Supply Water Withdrawals by Source (mgd)

Planning Region	County / Region	Coastal Floridan	Inland Floridan	Inter-mediate	Claiborne	Sand and Gravel	Surficial	Total Groundwater	Total Surface Water	TOTAL REPORTED WATER USE
I	Escambia	-	-	-	-	40.068	-	40.068	-	40.068
	Region Totals	-	-	-	-	40.068	-	40.068	-	40.068
II	Okaloosa	15.538	8.234	-	-	-	-	23.773	-	23.773
	Santa Rosa	0.871	0.291	-	-	18.064	-	19.226	-	19.226
	Walton	1.373	15.861	0.135	-	-	-	17.369	-	17.369
	Region Totals	17.783	24.386	0.135	-	18.064	-	60.368	-	60.368
III	Bay ⁽¹⁾	-	1.998	-	-	-	-	1.998	19.371	21.369
	Region Totals	-	1.998	-	-	-	-	1.998	19.371	21.369
IV	Calhoun	-	0.220	-	-	-	-	0.220	-	0.220
	Holmes	-	0.669	-	0.271	-	-	0.940	-	0.940
	Jackson	-	2.890	-	0.035	-	-	2.925	-	2.925
	Liberty	-	0.416	-	-	-	-	0.416	-	0.416
	Washington	-	1.155	-	-	-	-	1.155	-	1.155
	Region Totals	-	5.350	-	0.306	-	-	5.656	-	5.656
V	Franklin	2.244	-	-	-	-	-	2.244	-	2.244
	Gulf	0.491	0.217	0.000	-	-	-	0.708	1.567	2.275
	Region Totals	2.735	0.217	0.000	-	-	-	2.952	1.567	4.519
VI	Gadsden	-	4.081	-	-	-	-	4.081	-	4.081
	Region Totals	-	4.081	-	-	-	-	4.081	-	4.081
VII	Jefferson ^(NWF Only)	-	0.634	-	-	-	-	0.634	-	0.634
	Leon	-	30.143	-	-	-	-	30.143	-	30.143
	Wakulla	-	2.437	-	-	-	-	2.437	-	2.437
	Region Totals	-	33.213	-	-	-	-	33.213	-	33.213
DISTRICT TOTALS		20.518	69.246	0.135	0.306	58.132	-	148.337	20.938	169.275

(1) Bay County Board of County Commissioners (BCBOCC) surface water withdrawals from Deer Point Lake Reservoir exclude exports to large industrial users, and to Tyndall Air Force Base. See ICI for industrial and institutional water use estimates.

NOTE: Since 2015, public supply IWUP compliance data has been affected by adjustments in permit and reporting requirements, and by Emergency Executive Orders. As a result, the 2023 estimated public supply water use relies on DEP Monthly Operating Report (MOR) data and/or historical water use for approximately 15 percent of the total public supply utility systems.

1.3 Public Supply Water Demand, Populations Served, and Per Capita Water Use - by Utility

Planning Region	Public Supply Utility or Service Area	Withdrawals and Water Demand (mgd)				Populations and Per Capita Water Use (gpcd)		
		Reported Pumpage	Imports	Exports	Finished Water Demand	Public Supply Adjusted ⁽¹⁾ Population Served	Average GROSS Per Capita Water Use	Average RESIDENTIAL Per Capita Water Use
I	Escambia County	40.068	0.000	0.000	40.068	318,369	125.85	80.60
	Central Water Works, Inc.	0.351	-	-	0.351	2,445	143.59	57.61
	Century, Town of	0.533	-	-	0.533	3,490	152.76	110.00
	Cottage Hill Water Works, Inc.	0.030	-	-	0.030	3,562	8.36	75.91
	Emerald Coast Utilities Authority (ECUA)	34.371	-	-	34.371	257,211	133.63	83.79
	Farm Hill Utilities, Inc.	0.718	-	-	0.718	6,084	118.00	87.97
	Gonzalez Utilities Association, Inc.	0.541	-	-	0.541	4,854	111.56	71.14
	Molino Utilities, Inc.	0.949	-	-	0.949	8,487	111.79	69.31
	People's Water Service Company	2.574	-	-	2.574	28,138	91.49	57.94
	EREC Water System	0.000	-	-	0.000	4,098	0.09	52.03
	REGION I - Totals/Average Per Capita	40.068	0.000	0.000	40.068	318,369	125.85	80.60
II	Okaloosa County	23.770	3.437	0.000	27.207	240,030	113.35	59.15
	Auburn Water System	2.452	-	-	2.452	15,895	154.24	97.42
	Baker Water System	0.270	-	-	0.270	2,791	96.84	71.94
	Okaloosa Waterworks-US Water Services	0.035	-	-	0.035	573	61.33	45.99
	Crestview, City of	2.298	-	-	2.298	26,399	87.06	31.00
	Destin Water Users	1.606	2.853	-	4.429	31,049	142.66	88.94
	Fort Walton Beach, City of	2.627	-	-	2.627	24,570	106.90	50.32
	Holt Water Works, Inc.	0.210	-	-	0.210	2,146	97.87	60.68
	Laurel Hill, City of	0.127	-	-	0.127	1,549	82.14	60.73
	Mary Esther, City of	0.408	-	-	0.408	4,027	101.28	57.74
	Milligan Water System	0.142	-	-	0.142	1,729	82.03	50.86
	Niceville, City of	2.765	-	-	2.765	21,326	129.67	85.36
	OCW&S - Bluewater	1.213	-	-	1.213	13,760	88.12	60.74
	OCW&S - Okaloosa County Water & Sewer	6.409	-	-	6.409	85,169	106.95	44.12
	<i>Main Garniers</i>					-	-	-
	<i>Shalimar</i>					-	-	-
	<i>Okaloosa Island</i>					-	-	-
	<i>County West</i>					-	-	-
	OCW&S - Mid-County	2.700	-	-	2.700	-	-	-
SWUC (Okaloosa County portion)	-	0.614	-	0.614	3,508	174.91	102.17	
Valparaiso, City of	0.508	-	-	0.508	5,539	91.75	52.03	

Table 1.3, continued

Planning Region	Public Supply Utility / County / Region	Withdrawals and Water Demand (mgd)				Populations and Per Capita Water Use (gpcd)		
		Reported Pumpage	Imports	Exports	Finished Water Demand	Public Supply Adjusted ⁽¹⁾ Population Served	Average GROSS Per Capita Water Use	Average RESIDENTIAL Per Capita Water Use
II	Santa Rosa County	19.226	6.378	6.378	19.182	191,319	100.26	64.23
	Bagdad-Garcon Point Water System	0.685	-	-	0.685	5,945	115.29	79.08
	Berrydale Water System	0.243	-	-	0.243	2,630	92.53	49.44
	Chumuckla Water System	0.410	-	-	0.410	4,667	87.82	72.29
	East Milton Water System	1.966	-	-	1.966	15,240	129.01	62.59
	Fairpoint Regional Utility System (FRUS)	6.421	-	6.378	-	-	-	0.00
	Gulf Breeze Water Department (Service Area)	-	2.120	-	2.120	6,613	320.60	240.45
	Holley-Navarre Water System, Inc.	0.529	2.733	-	3.262	44,503	73.30	55.63
	Jay, Town of	0.145	-	-	0.145	1,115	130.02	95.78
	Midway Water System	0.642	1.104	0.000	1.746	18,036	96.83	63.74
	Milton, City of	1.926	-	-	1.926	18,520	103.98	71.90
	Moore Creek-Mt. Carmel Utilities, Inc.	0.321	-	-	0.321	3,375	95.23	59.05
	Pace Water System, Inc.	5.055	-	-	5.055	44,488	113.63	55.77
	Point Baker Water System, Inc.	0.869	-	-	0.869	9,400	92.40	79.78
	Navarre Beach - Santa Rosa BOCC	0.013	0.420	-	0.433	6,094	71.13	51.27
	South Santa Rosa Utilities (Service Area)	-	0.000	-	0.000	10,693	-	0.00
	II	Walton County	17.361	2.849	6.285	13.924	123,352	112.88
Argyle Water System		0.075	-	-	0.075	988	76.10	57.08
DeFuniak Springs, City of		1.354	-	-	1.354	12,243	110.60	44.03
FCSWC / Regional Utilities		6.969	-	-	6.969	68,828	101.26	61.11
Freeport, City of		1.245	-	-	1.245	12,376	100.64	69.16
Freeport, City of, North Bay Water System		0.149	-	-	0.149	2,216	67.18	57.12
Inlet Beach Water System, Inc.		0.373	-	-	0.373	2,615	142.58	66.67
Mossy Head Water Works, Inc.		0.353	-	-	0.353	4,104	85.91	53.27
Paxton, City of		0.185	-	-	0.185	1,566	117.85	98.87
SWUC - Rockhill Inland Well Field		5.672	-	5.672	0.000	-	-	-
SWUC - Coastal Well Field		0.986	2.849	0.614	3.221	18,416	174.91	102.17
REGION II - Totals/Average Per Capita		60.357	12.663	12.663	60.314	554,702	108.75	62.55

Table 1.3, continued

Planning Region	Public Supply Utility / County / Region	Withdrawals and Water Demand (mgd)				Populations and Per Capita Water Use (gpcd)		
		Reported Pumpage	Imports	Exports	Finished Water Demand	Public Supply Adjusted ⁽¹⁾ Population Served	Average GROSS Per Capita Water Use	Average ⁽²⁾ RESIDENTIAL Per Capita Water Use
III	Bay County	21.369	17.195	17.195	21.369	185,892	114.96	49.22
	Bay County BOCC (Public Supply ONLY)	19.371	-	-	-	11,692	-	-
	Bay County - Cedar Grove	-	0.367	-	0.367	3,450	106.51	66.04
	Bay County - North Bay/Lake Merial	-	0.434	-	0.434	6,000	72.36	44.86
	Bay County - Bay Co. (excludes North Bay, Lk Merial, St. George Island)	-	0.703	-	0.703	9,500	74.04	45.90
	Bay County BOCC - Total Exports	-	-	17.195	-	-	-	-
	Callaway	-	0.863	-	0.863	15,269	56.49	35.03
	Lynn Haven, City of	1.998	0.331	-	2.329	20,244	115.07	56.34
	Mexico Beach	-	0.124	-	0.124	2,488	49.66	30.79
	Panama City Water System	-	4.001	-	4.001	43,316	92.36	48.95
	Panama City Beach	-	9.485	-	9.485	61,798	153.49	61.40
	Parker	-	0.212	-	0.212	4,027	52.60	32.61
	Springfield	-	0.675	-	0.675	8,109	83.29	51.64
REGION III - Totals/Average Per Capita		21.369	17.195	17.195	21.369	185,892	114.96	49.22

NOTE: The Bay County Board of County Commissioners (BOCC) water utility serves the majority of service areas (except for parts of the City of Lynn Haven) in Bay County. Water withdrawn and supplied to several large industrial facilities and to Tyndall Air Force Base are excluded from Public Supply and included in ICI.

(2) County-wide average estimate.

Table 1.3, continued

Planning Region	Public Supply Utility / County / Region	Withdrawals and Water Demand (mgd)				Populations and Per Capita Water Use (gpcd)		
		Reported Pumpage	Imports	Exports	Finished Water Demand	Public Supply Adjusted ⁽¹⁾ Population Served	Average GROSS Per Capita Water Use	Average RESIDENTIAL Per Capita Water Use
V	Franklin County	2.244	0.000	0.000	2.244	17,635	127.27	66.22
	Alligator Point Water Resources District	0.096	-	-	0.096	1,400	68.45	56.03
	Apalachicola, City of	0.662	-	-	0.662	3,784	176.35	58.04
	Carrabelle, City of	0.433	-	-	0.433	2,766	156.58	97.08
	- Carrabelle, City of (Lanark Village)	0.103	-	-	0.103	1,625	63.36	0.00
	Eastpoint Water and Sewer District	0.312	-	-	0.312	2,333	133.56	82.81
	St. James Island (Summercamp, FRWA)	0.007	-	-	0.007	56	134.96	65.50
	Water Management (St. George Island)	0.631	-	-	0.631	5,701	110.74	71.25
Gulf County		2.275	0.000	0.000	2.275	15,621	145.63	53.31
V	Gulf County Water System	0.490	-	-	0.490	3,804	128.91	78.46
	Port St. Joe, City of	1.568	-	-	1.568	9,693	161.74	41.26
	Wewahitchka, City of	0.217	-	-	0.217	2,124	102.07	63.29
REGION V - Totals/Average Per Capita		4.519	0.000	0.000	4.519	33,256	135.89	60.16

Table 1.3, continued

Planning Region	Public Supply Utility / County / Region	Withdrawals and Water Demand (mgd)				Populations and Per Capita Water Use (gpcd)			
		Reported Pumpage	Imports	Exports	Finished Water Demand	Public Supply Adjusted ⁽¹⁾ Population Served	Average GROSS Per Capita Water Use	Average RESIDENTIAL Per Capita Water Use	
IV	Calhoun County	0.220	0.000	0.000	0.220	3,722	59.06	68.85	
	Altha, Town of	0.104	-	-	0.104	692	150.35	93.21	
	Blountstown	0.116	-	-	0.116	3,031	38.23	63.29	
IV	Holmes County	0.940	0.039	0.000	0.979	6,276	156.03	58.01	
	Bonifay, City of	0.882	-	-	0.882	4,246	207.70	67.45	
	Caryville, Town of (Holmes County portion)	-	0.039	-	0.039	271	143.29	143.29	
	Esto Water Works	0.023	-	-	0.023	348	65.66	40.71	
	Joyce E. Snare Waterworks	0.000	-	-	0.000	254	-	0.00	
	Noma, Town of	0.004	-	-	0.004	237	15.35	9.52	
	Ponce de Leon, Town of	0.000	-	-	0.000	586	-	4.35	
	Westville, Town of	0.032	-	-	0.032	334	95.90	59.46	
IV	Jackson County	2.925	0.000	0.000	2.925	20,827	140.43	61.12	
	Alford, Town of	0.063	-	-	0.063	586	107.36	42.94	
	Campbellton, Town of	0.000	-	-	0.000	281	-	0.00	
	Cottdale, City of	0.000	-	-	0.000	1,078	-	0.00	
	Graceville, City of	0.641	-	-	0.641	2,159	296.77	57.21	
	Grand Ridge, Town of	0.109	-	-	0.109	882	123.92	49.57	
	Greenwood, Town of	0.047	-	-	0.047	551	85.81	34.32	
	Jackson Utilities, Plant 1, JCBOCC	0.289	-	-	0.289	3,678	78.55	52.70	
	Jacob, City of	0.000	-	-	0.000	219	-	0.00	
	Malone, Town of	0.070	-	-	0.070	1,244	56.03	22.41	
	Marianna, City of	1.473	-	-	1.473	8,227	179.05	90.78	
	Sneads, Town of	0.233	-	-	0.233	1,840	126.51	50.60	
	IV	Liberty County	0.416	0.000	0.000	0.416	4,356	95.53	89.11
		Bristol, City of	0.160	-	-	0.160	1,923	83.34	118.92
Liberty Co. BOCC, Estiffanulga (Talquin)		0.017	-	-	0.017	281	61.98	38.43	
Liberty Co. BOCC, Hosford-Telogia (Talquin)		0.148	-	-	0.148	1,444	102.50	63.55	
Liberty Co. BOCC, Lake Mystic (Talquin)		0.047	-	-	0.047	314	148.97	92.36	
Liberty Co. BOCC, Rock Bluff (Talquin)		0.020	-	-	0.020	166	123.19	76.38	
Liberty Co. BOCC, Sumatra Water System		0.017	-	-	0.017	163	101.54	62.95	
Talquin Electric - Sweetwater System		0.007	-	-	0.007	65	102.46	76.84	
IV	Washington	1.155	0.000	0.039	1.117	6,782	164.64	92.47	
	Sunny Hills (formerly Aqua Utilities)	0.216	-	-	0.216	1,458	148.36	43.16	
	Caryville, Town of	0.129	-	0.039	0.091	426	212.75	212.75	
	Chipley, City of	0.633	-	-	0.633	3,660	172.82	104.93	
	Vernon, City of	0.124	-	-	0.124	750	165.73	75.77	
	Wausau, Town of	0.053	-	-	0.053	488	108.20	67.08	
REGION IV - Totals/Average Per Capita		5.656	0.039	0.039	5.656	41,963	134.79	69.31	

Table 1.3, continued

Planning Region	Public Supply Utility / County / Region	Withdrawals and Water Demand (mgd)				Populations and Per Capita Water Use (gpcd)			
		Reported Pumpage	Imports	Exports	Finished Water Demand	Public Supply Adjusted ⁽¹⁾ Population Served	Average GROSS Per Capita Water Use	Average RESIDENTIAL Per Capita Water Use	
VI	Gadsden County	4.081	0.000	0.000	4.081	32,713	124.75	76.68	
	Chattahoochee, City of	0.346	-	-	0.346	2,741	126.05	57.60	
	Greensboro, Town of	0.067	-	-	0.067	794	84.10	45.42	
	Gretna, City of	0.350	0.115	-	0.465	1,483	313.78	194.54	
	Havana, Town of	0.461	-	-	0.461	3,559	129.56	80.33	
	Quincy, City of	1.277	-	0.115	1.162	10,391	116.64	72.32	
	Talquin Electric - Gadsden County Regional	1.565	-	-	1.565	13,867	112.87	72.72	
	Talquin Electric - Hammock Creek	0.000	-	-	0.000	62	-	0.00	
	Talquin Electric - Jamieson Water	0.015	-	-	0.015	113	132.12	99.09	
	Talquin Electric - St. James	0.000	-	-	0.000	130	-	0.00	
	REGION VI - Totals/Average Per Capita	4.081	0.000	0.000	4.081	32,713	124.75	76.68	
VII	Jefferson County ^(NWF Only)	0.634	0.000	0.000	0.634	6,626	95.63	72.92	
	Jefferson Communities Water System, Inc.	0.208	-	-	0.208	2,153	96.79	83.39	
	Monticello, City of	0.425	-	-	0.425	4,473	95.07	67.88	
	Leon County	30.143	0.000	0.546	29.597	265,696	111.39	57.83	
	Seminole-Rowe (total all service areas)	0.114	-	-	0.114	1,601	71.30	56.61	
	Tallahassee, City of	26.515	-	0.546	25.969	227,849	113.97	56.61	
	Talquin Electric - Bradfordville Regional	1.510	-	-	1.510	12,634	119.54	74.12	
	Talquin Electric - Lake Jackson Regional	1.009	-	-	1.009	12,213	82.58	58.43	
	Talquin Electric - Leon County East Regional	0.211	-	-	0.211	2,095	100.89	92.11	
	Talquin Electric - Leon County West Regional	0.314	-	-	0.314	2,447	128.36	71.18	
	Talquin Electric - Meadows Regional	0.412	-	-	0.412	4,413	93.35	72.72	
	Talquin Electric Coop Small Systems (total)	0.037	-	-	0.037	1,361	27.30	20.48	
	Miscellaneous Small Public Systems (total)	0.020	-	-	0.020	1,083	18.87	14.15	
		Wakulla County	2.437	0.546	0.000	2.983	28,799	103.57	76.92
	Panacea Area Water System, Inc.	0.243	-	-	0.243	2,917	83.21	51.59	
	Sopchoppy, City of	1.031	-	-	1.031	11,413	90.32	78.42	
	St. Marks, City of, Water Sys. (COT Booster Plant)	-	0.213	-	0.213	658	323.70	200.70	
Tallahassee, City of (Wakulla County portion)	-	0.333	-	0.333	2,745	121.28	70.48		
Talquin Electric - Wakulla Regional	1.079	-	-	1.079	10,790	100.03	72.40		
Talquin Electric - Wakulla County River Sink	0.084	-	-	0.084	276	304.06	228.04		
	REGION VII - Totals/Average Per Capita	33.213	0.546	0.546	33.213	301,121	110.30	59.98	
NFWWMD Districtwide TOTALS / Averages -		169.264	30.443	30.443	169.221	1,468,015	115.27	64.71	

2.1 Domestic Self-Supply Population and Water Use Estimates

Planning Region	County / Region	DSS ⁽¹⁾ Pop Estimate	Estimated DSS Water Use ⁽²⁾ (mgd)	Adjusted DSS Populations ⁽³⁾	GROSS DSS ⁽⁴⁾ Well Count	BEBR 2023 PPH ⁽⁵⁾	Estimated Persons Per Well	Estimated Water Use ⁽⁶⁾ (mgd)
I	Escambia	27,795	2.288	25,828	1,694	2.36	15.25	0.329
	Total/Average	27,795	2.288	25,828	1,694	2.36	15.25	0.329
II	Okaloosa	19,724	1.623	18,308	3,276	2.46	5.59	0.663
	Santa Rosa	18,616	1.532	16,477	4,696	2.62	3.51	1.013
	Walton	11,848	0.975	11,848	9,032	2.43	1.31	1.806
	Total/Average	50,188	4.131	46,633	17,004	2.50	3.47	3.482
III	Bay	32,802	2.700	31,674	15,192	2.45	2.08	3.063
	Total/Average	32,802	2.700	31,674	15,192	2.45	2.08	3.063
IV	Calhoun	10,508	0.865	9,842	4,156	2.47	2.37	0.845
	Holmes	13,834	1.139	12,526	5,012	2.43	2.50	1.002
	Jackson	29,341	2.415	26,405	11,876	2.39	2.22	2.336
	Liberty	4,339	0.357	2,871	1,471	2.44	1.95	0.295
	Washington	19,316	1.590	18,534	8,508	2.51	2.18	1.758
	Total/Average	77,337	6.365	70,177	31,023	2.45	2.24	6.236
V	Franklin	1,577	0.130	1,577	1,240	2.21	1.27	0.226
	Gulf	4,958	0.408	6,675	2,140	2.32	3.12	0.409
	Total/Average	6,535	0.538	8,252	3,380	2.27	2.20	0.634
VI	Gadsden	13,998	1.152	10,880	4,149	2.47	2.62	0.843
	Total/Average	13,998	1.152	10,880	4,149	2.47	2.62	0.843
VII	Jefferson ^(NWF Only)	5,319	0.438	5,319	2,511	2.31	2.12	0.477
	Leon	41,476	3.414	40,340	10,384	2.28	3.88	1.949
	Wakulla	11,143	0.917	10,112	4,529	2.53	2.23	0.943
	Total/Average	57,939	4.769	55,772	17,424	2.37	2.75	3.369
TOTALS/AVERAGES		266,594	21.941	249,216	89,866	2.41	2.97	17.958

(1) Domestic Self-Supply (DSS) includes small limited public supply systems and inmate populations that are not reported or estimated in the public supply water use category.

(2) Estimated water use based on DSS population estimate multiplied by a USGS per capita Districtwide estimated rate of 85 gpcd (USGS, 2020).

(3) "Adjusted DSS Populations" is an experimental estimate with inmate population refinements not otherwise accounted for.

(4) Estimates of all known DSS (DO) and limited public supply (LP) wells in NFWFMD wells inventory ArcGIS database as of 12/31/2023.

(5) County-wide average persons per household (PPH) based on UF Bureau of Economic and Business Research (BEBR) 2022 population estimate data.

(6) For information or comparison only: estimated water use, based on number of known wells x BEBR average PPH x USGS per capita water use rate of 88.67 gpcd.

2.2 Domestic Self-Supply Population Estimates Over Time

Planning Region	County / Region	WSA 2013	NFWFMD Annual Water Use Reports ⁽¹⁾										
		2010	2013	2014 ⁽²⁾	2015	2016	2017	2018	2019	2020	2021	2022	2023
I	Escambia	16,606	17,720	18,809	12,017	11,958	11,242	15,118	17,231	20,903	18,513	23,802	27,795
	Region I Total	16,606	17,720	18,809	12,017	11,958	11,242	15,118	17,231	20,903	18,513	23,802	27,795
II	Okaloosa	12,367	11,731	12,224	23,940	18,595	9,375	12,916	10,382	10,010	13,122	15,899	19,724
	Santa Rosa	22,402	11,772	8,907	2,890	1,794	10,368	13,228	11,997	10,468	7,538	12,559	18,616
	Walton	4,218	13,106	16,009	17,616	11,508	15,896	16,019	10,997	4,793	3,801	6,189	11,848
	Region II Total	38,987	36,609	37,140	44,446	31,897	35,639	42,163	33,377	25,270	24,461	34,647	50,188
III	Bay	17,892	17,930	18,538	17,743	16,364	19,142	21,767	15,884	23,579	22,427	28,834	32,802
	Region III Total	17,892	17,930	18,538	17,743	16,364	19,142	21,767	15,884	23,579	22,427	28,834	32,802
IV	Calhoun	10,423	10,415	10,311	10,417	11,237	11,699	11,808	10,752	11,201	10,371	10,430	10,508
	Holmes	13,929	14,328	14,316	14,554	14,659	14,502	14,436	13,761	13,712	13,586	13,706	13,834
	Jackson	33,022	34,666	34,491	35,409	35,244	36,528	33,333	29,367	27,148	27,503	28,736	29,341
	Liberty	5,092	4,407	4,584	5,478	5,460	5,485	5,679	5,361	5,101	3,780	4,180	4,339
	Washington	16,420	17,255	17,501	18,814	18,765	19,285	19,087	19,015	19,153	18,799	19,279	19,316
	Region IV Total	78,886	81,071	81,203	84,672	85,366	87,499	84,343	78,256	76,315	74,039	76,331	77,337
V	Franklin	1,785	1,772	1,611	1,821	1,843	3,668	2,034	1,287	742	734	1,241	1,577
	Gulf	2,487	2,005	475	3,629	3,774	5,512	5,182	1,902	3,431	3,129	4,488	4,958
Region V Total	4,272	3,777	2,086	5,450	5,617	9,180	7,216	3,189	4,173	3,862	5,729	6,535	
VI	Gadsden	15,173	15,095	16,286	17,085	17,155	18,731	18,750	16,958	15,758	13,376	13,533	13,998
	Region VI Total	15,173	15,095	16,286	17,085	17,155	18,731	18,750	16,958	15,758	13,376	13,533	13,998
VII	Jefferson ^(NWF Only)	9,350	10,237	7,800	5,160	5,216	5,421	5,989	5,116	4,754	4,722	4,970	5,319
	Leon	59,552	74,538	57,952	51,884	51,414	32,616	38,154	36,527	38,858	35,644	38,869	41,476
	Wakulla	24,872	7,987	8,007	9,591	9,516	8,886	9,018	10,980	8,894	9,193	10,094	11,143
	Region VII Total	93,774	92,762	73,759	66,635	66,147	46,923	53,161	52,622	52,506	49,558	53,932	57,938
TOTALS		265,590	264,964	247,821	248,048	234,504	228,356	242,518	217,517	218,505	206,237	236,808	266,593

(1) Population estimates from 2015 to date include seasonal population adjustments. County total BEBR estimates are adjusted with estimated impacts of seasonal residents, and public supply populations served also includes estimates of seasonal residents where applicable. District studies indicate that approximately 10% of seasonal populations are in the domestic self-supply water use category. Therefore, the net county populations not served by public supply, i.e. DSS, also include seasonal resident estimates.

(2) Year 2014 included seasonal population adjustments in public supply utility populations served in Walton and Franklin counties.

3.1 Agricultural Water Use Reported and Total Estimates (mgd)

2023 Reported Water Use

Planning Region	County / Region	Ground Water	Surface Water	Total REPORTED Water Use ⁽¹⁾	Percent Reported to Total Estimate	Additional FSAID ⁽²⁾ Estimated Water Use	FSAID XI - 2023 Estimated TOTAL Water Use ⁽³⁾	FSAID X - 2022 Estimated TOTAL Water Use ⁽⁴⁾
I	Escambia	0.120	-	0.120	3.9%	2.971	3.091	3.093
	Region I Total	0.120	0.000	0.120	3.9%	2.971	3.091	3.093
II	Okaloosa	-	-	0.000	0.0%	0.473	0.473	0.473
	Santa Rosa	0.289	-	0.289	16.3%	1.487	1.776	1.788
	Walton	0.331	-	0.331	31.3%	0.727	1.058	1.071
	Region II Total	0.620	0.000	0.620	18.7%	2.687	3.306	3.332
III	Bay	0.003	-	0.003	0.4%	0.907	0.911	0.880
	Region III Total	0.003	0.000	0.003	0.4%	0.907	0.911	0.880
IV	Calhoun	3.005	0.037	3.042	102.0%	-0.061	2.981	2.981
	Holmes	-	-	0.000	0.0%	0.904	0.904	0.904
	Jackson	17.857	0.125	17.982	56.7%	13.751	31.733	31.740
	Liberty	0.001	-	0.001	0.7%	0.100	0.101	0.106
	Washington	0.002	0.016	0.018	2.0%	0.868	0.886	0.886
	Region IV Total	20.865	0.178	21.042	57.5%	15.562	36.605	36.617
V	Franklin	-	-	0.000	0.0%	0.010	0.010	0.010
	Gulf	0.246	-	0.246	83.5%	0.049	0.295	0.295
	Region V Total	0.246	0.000	0.246	80.7%	0.059	0.305	0.305
VI	Gadsden	1.177	1.141	2.318	47.1%	2.600	4.919	4.932
	Region VI Total	1.177	1.141	2.318	47.1%	2.600	4.919	4.932
VII	Jefferson ^(NWF Only)	0.663	-	0.663	65.7%	0.346	1.009	1.019
	Leon	0.090	-	0.090	19.3%	0.375	0.465	0.465
	Wakulla	-	-	0.000	0.0%	0.111	0.111	0.119
	Region VII Total	0.753	0.000	0.753	47.5%	0.833	1.586	1.603
TOTALS		23.784	1.319	25.103	49.5%	25.620	50.722	50.761

(1) In 2023, approximately 49% of agriculture IWUPs had reported water use and were audited. Where appropriate, the previous year reported use was carried forward.

(2) Florida Statewide Agricultural Irrigation Demand (FSAID), Florida Department of Agriculture and Consumer Services (DACS), Office of Agricultural Water Policy. This column indicates the approximate amount of water that is estimated to be used (but not required to be reported) in northwest Florida.

(3) FSAID estimate based on average hypothetical rainfall (modeled results).

(4) Previous FSAID estimates for information and reference only.

3.2 Agricultural Reported Water Use by Source (mgd)

Planning Region	County / Region	Water Use by Groundwater Aquifer(s)						Total Ground-water	Total Surface Water	TOTAL 2023 REPORTED WATER USE	TOTAL 2022 REPORTED WATER USE ⁽¹⁾
		Coastal Floridan	Inland Floridan	Inter-mediate	Claiborne	Sand-and-Gravel	Surficial				
I	Escambia	-	-	-	-	0.120	-	0.120	-	0.120	0.124
	Region I Total	-	-	-	-	0.120	-	0.120	-	0.120	0.124
II	Okaloosa	-	-	-	-	-	-	-	-	0.000	0.122
	Santa Rosa	-	0.072	-	-	0.217	-	0.289	-	0.289	0.562
	Walton	-	0.331	-	-	-	-	0.331	-	0.331	0.304
	Region II Total	-	0.403	-	-	0.217	-	0.620	-	0.620	0.987
III	Bay	-	0.003	-	-	-	-	0.003	-	0.003	0.003
	Region III Total	-	0.003	-	-	-	-	0.003	-	0.003	0.003
IV	Calhoun	-	3.005	-	-	-	-	3.005	0.037	3.042	2.505
	Holmes	-	-	-	-	-	-	-	-	0.000	0.000
	Jackson	-	17.857	-	-	-	-	17.857	0.125	17.982	18.409
	Liberty	-	0.001	-	-	-	-	0.001	-	0.001	0.001
	Washington	-	0.002	-	-	-	-	0.002	0.016	0.018	0.075
	Region IV Total	-	20.865	-	-	-	-	20.865	0.178	21.042	20.990
V	Franklin	-	-	-	-	-	-	-	-	0.000	0.000
	Gulf	-	0.246	-	-	-	-	0.246	-	0.246	0.210
	Region V Total	-	0.246	-	-	-	-	0.246	-	0.246	0.210
VI	Gadsden	-	1.177	-	-	-	-	1.177	1.141	2.318	3.195
	Region VI Total	-	1.177	-	-	-	-	1.177	1.141	2.318	3.195
VII	Jefferson ^(NWF Only)	-	0.663	-	-	-	-	0.663	-	0.663	0.176
	Leon	-	0.090	-	-	-	-	0.090	-	0.090	0.130
	Wakulla	-	-	-	-	-	-	-	-	0.000	0.000
	Region VII Total	-	0.753	-	-	-	-	0.753	-	0.753	0.307
	TOTALS	-	23.446	-	-	0.337	-	23.784	1.319	25.103	25.815

(1) Reported agricultural water use in previous calendar years for information and reference only.

4.1 Recreational Irrigation Water Use – Reported and Total Estimates (mgd)

Planning Region	County / Region	2023 Reported Water Use			Additional Water Use Estimates ⁽¹⁾			ESTIMATED TOTAL WATER USE		
		Ground-water	Surface Water	Total District REPORTED Water Use	Ground-water	Surface Water	Total Additional Estimates	Ground-water	Surface Water	Estimated TOTAL Water Use
I	Escambia	0.385	1.259	1.644	1.169	0.000	1.169	1.555	1.259	2.813
	Region I Total	0.385	1.259	1.644	1.169	0.000	1.169	1.555	1.259	2.813
II	Okaloosa	1.663	1.818	3.481	1.908	0.000	1.908	3.571	1.818	5.389
	Santa Rosa	0.355	0.015	0.370	1.485	0.375	1.860	1.840	0.390	2.230
	Walton	1.782	0.854	2.636	0.962	0.187	1.150	2.744	1.041	3.786
	Region II Total	3.800	2.686	6.487	4.356	0.562	4.918	8.156	3.249	11.405
III	Bay	0.861	0.357	1.219	0.941	0.000	0.941	1.803	0.357	2.160
	Region III Total	0.861	0.357	1.219	0.941	0.000	0.941	1.803	0.357	2.160
IV	Calhoun	0.000	0.000	0.000	0.006	0.000	0.006	0.006	0.000	0.006
	Holmes	0.000	0.000	0.000	0.215	0.000	0.215	0.215	0.000	0.215
	Jackson	0.000	0.000	0.000	0.387	0.000	0.387	0.387	0.000	0.387
	Liberty	0.000	0.000	0.000	0.002	0.000	0.002	0.002	0.000	0.002
	Washington	0.317	0.000	0.317	0.016	0.000	0.016	0.332	0.000	0.332
	Region IV Total	0.317	0.000	0.317	0.626	0.000	0.626	0.943	0.000	0.943
V	Franklin	0.000	0.111	0.111	0.060	0.000	0.060	0.060	0.111	0.171
	Gulf	0.047	0.000	0.047	0.070	0.000	0.070	0.116	0.000	0.116
	Region V Total	0.047	0.111	0.157	0.130	0.000	0.130	0.177	0.111	0.287
VI	Gadsden	0.016	0.034	0.051	0.111	0.000	0.111	0.127	0.034	0.161
	Region VI Total	0.016	0.034	0.051	0.111	0.000	0.111	0.127	0.034	0.161
VII	Jefferson ^(NWF Only)	0.389	0.000	0.389	0.191	0.000	0.191	0.580	0.000	0.580
	Leon	1.303	0.428	1.731	0.663	0.240	0.903	1.966	0.668	2.634
	Wakulla	0.000	0.000	0.000	0.206	0.000	0.206	0.206	0.000	0.206
	Region VII Total	1.692	0.428	2.120	1.060	0.240	1.300	2.752	0.668	3.421
TOTALS		7.119	4.875	11.994	8.393	0.802	9.196	15.512	5.678	21.190

(1) Additional water use estimates include Individual Water Use Permits (IWUPs) with no reporting requirements, and estimates of water use from residential and other small-scale recreational wells with General Water Use Permits (GWUPs). Estimates developed from 2022 data for the 2023 WSA

4.2 Recreational Irrigation Reported Water Use by Source (mgd)

Planning Region	County / Region	Water Use by Groundwater Aquifer(s)						Total Groundwater	Net Surface Water ⁽¹⁾	TOTAL REPORTED WATER USE ⁽¹⁾
		Coastal Floridan	Inland Floridan	Inter-mediate	Claiborne	Sand-and-Gravel	Surficial			
I	Escambia	-	-	-	-	0.364	0.021	0.385	1.259	1.644
	Region I Total	-	-	-	-	0.364	0.021	0.385	1.259	1.644
II	Okaloosa	-	0.019	-	-	1.644	-	1.663	1.818	3.481
	Santa Rosa	-	-	-	-	0.355	-	0.355	0.015	0.370
	Walton	-	0.506	0.083	-	0.983	0.210	1.782	0.854	2.636
	Region II Total	-	0.525	0.083	-	2.983	0.210	3.801	2.686	6.487
III	Bay	0.163	0.024	-	-	0.015	0.660	0.862	0.357	1.219
	Region III Total	0.163	0.024	-	-	0.015	0.660	0.862	0.357	1.219
IV	Calhoun	-	-	-	-	-	-	-	-	-
	Holmes	-	-	-	-	-	-	-	-	-
	Jackson	-	0.017	-	-	-	-	-	-	-
	Liberty	-	-	-	-	-	-	-	-	-
	Washington	-	0.317	-	-	-	-	0.317	-	0.317
	Region IV Total	-	0.334	-	-	-	-	0.317	-	0.317
V	Franklin	-	-	-	-	-	-	-	0.111	0.111
	Gulf	-	-	0.023	-	-	0.023	0.047	-	0.047
	Region V Total	-	-	0.023	-	-	0.023	0.047	0.111	0.157
VI	Gadsden	-	0.016	-	-	-	-	0.016	0.034	0.051
	Region VI Total	-	0.016	-	-	-	-	0.016	0.034	0.051
VII	Jefferson ^(NWF Only)	-	0.389	-	-	-	-	0.389	-	0.389
	Leon	-	1.303	-	-	-	-	1.303	0.428	1.731
	Wakulla	-	-	-	-	-	-	0.000	-	-
	Region VII Total	-	1.692	-	-	-	-	1.692	0.428	2.120
TOTALS		0.163	2.592	0.107	-	3.362	0.914	7.120	4.875	11.994

(1) Recreational water use systems are often complex water flows between ground and surface waters. Groundwater withdrawals sometimes supplement surface water ponds, and at times, may be co-mingled with reclaimed water. Net surface water, and total water use, are adjusted and estimated accordingly.

NOTE: Of the current 92 recreational IWUPs, pumping reports and audits have been completed for roughly 60 percent of Permittees. For IWUPs without pumping audits, where appropriate, the previous year reported use is carried forward as a proxy for 2023 estimated water use. These "proxy estimates" occur in ten counties: Escambia, Santa Rosa, Okaloosa, Walton, Bay, Gulf, Gadsden, Leon, Wakulla, and Jefferson.

5.1 Industrial-Commercial-Institutional (ICI) Reported Water Use by Source (mgd)

Planning Region	County / Region	Water Use by Groundwater Aquifer(s)						Total Groundwater	Total Surface Water	TOTAL WATER USE ⁽¹⁾
		Coastal Floridan	Inland Floridan	Inter-mediate	Claiborne	Sand-and-Gravel	Surficial			
I	Escambia	-	-	-	-	20.290	0.138	20.427	0.473	20.900
	Region I Total	-	-	-	-	20.290	0.138	20.427	0.473	20.900
II	Okaloosa	0.495	1.125	-	-	0.145	-	1.766	-	1.766
	Santa Rosa	-	-	-	-	2.810	-	2.810	-	2.810
	Walton	-	0.041	-	-	-	0.000	0.041	0.274	0.315
	Region II Total	0.495	1.166	-	-	2.955	0.000	4.616	0.274	4.891
III	Bay ⁽²⁾	0.050	0.423	-	-	-	-	0.473	2.687	3.160
	Region III Total	0.050	0.423	-	-	-	-	0.473	2.687	3.160
IV	Calhoun	-	0.240	-	-	-	-	0.240	-	0.240
	Holmes	-	-	-	-	-	-	-	-	-
	Jackson	-	0.728	-	0.044	-	-	0.771	-	0.771
	Liberty	-	0.296	-	-	-	0.033	0.329	0.003	0.332
	Washington	-	0.272	-	-	-	-	0.272	-	0.272
	Region IV Total	-	1.535	-	0.044	-	0.033	1.612	0.003	1.615
V	Franklin	0.017	-	-	-	-	-	0.017	-	0.017
	Gulf	-	0.217	-	-	-	-	0.217	-	0.217
	Region V Total	0.017	0.217	-	-	-	-	0.234	-	0.234
VI	Gadsden	-	0.467	-	-	-	-	0.467	0.000	0.468
	Region VI Total	-	0.467	-	-	-	-	0.467	0.000	0.468
VII	Jefferson ^(NWF Only)	-	-	-	-	-	-	-	-	-
	Leon	-	0.097	-	-	-	-	0.097	-	0.097
	Wakulla	-	1.054	-	-	-	-	1.054	-	1.054
	Region VII Total	-	1.151	-	-	-	-	1.151	-	1.151
	TOTALS	0.562	4.959	-	0.044	23.245	0.171	28.981	3.437	32.418

(1) Where applicable, water use that is recirculated and returned to source is, for estimating purposes, not considered to be contributing to total estimated consumptive water use. Total estimated water use is adjusted accordingly.

(2) Surface water source is the Deer Point Lake Reservoir supplied by Bay County Board of County Commissioners. See Public Supply for more information.

6.1 Thermoelectric Power Generation Reported Water Use by Source (mgd)

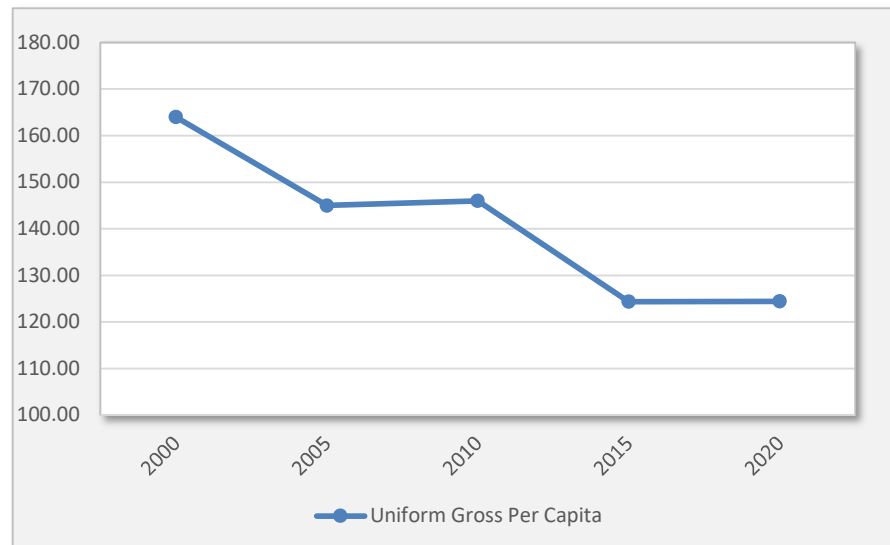
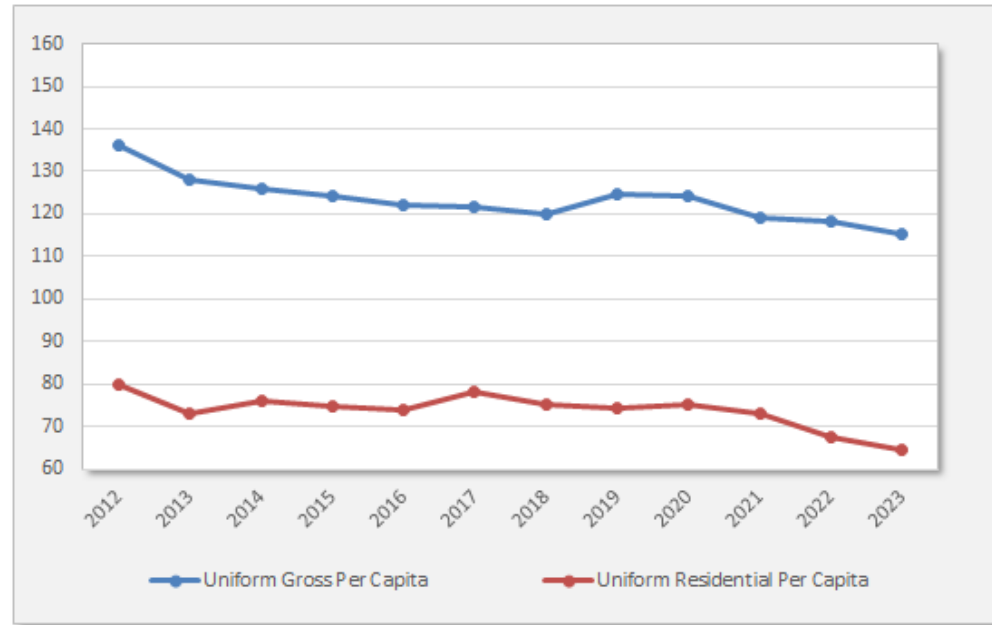
Planning Region	County / Region and Power Facility	Water Use by Groundwater Aquifer(s)						Total Groundwater	Total (Net Adjusted) Surface Water	TOTAL WATER USE ⁽¹⁾
		Coastal Floridan	Inland Floridan	Inter-mediate	Claiborne	Sand-and-Gravel	Surficial			
I	Escambia - Gulf / Crist	-	-	-	-	1.422	-	1.422	6.588	8.011
	Escambia - North Site	-	-	-	-	-	-	-	-	-
	Region I Total	-	-	-	-	1.422	-	1.422	6.588	8.011
II	Okaloosa	-	-	-	-	-	-	-	-	-
	Santa Rosa	-	-	-	-	-	-	-	-	-
	Walton	-	-	-	-	-	-	-	-	-
Region II Total	-	-	-	-	-	-	-	-	-	0.000
III	Bay - BOCC Waste Energy	-	0.000	-	-	-	-	0.000	0.000	0.000
	Bay - Gulf / Lansing Smith	-	0.460	-	-	-	-	0.460	3.249	3.709
	Region III Total	-	0.460	-	-	-	-	0.460	3.249	3.709
IV	Calhoun	-	-	-	-	-	-	-	-	-
	Holmes	-	-	-	-	-	-	-	-	-
	Jackson - Gulf / Scholz	-	0.009	-	-	-	-	0.009	0.086	0.095
	Liberty - Telogia Power	-	0.206	-	-	-	-	0.206	-	0.206
	Washington	-	-	-	-	-	-	-	-	-
Region IV Total	-	0.215	-	-	-	-	0.215	0.086	0.301	
V	Franklin	-	-	-	-	-	-	-	-	-
	Gulf	-	-	-	-	-	-	-	-	-
Region V Total	-	-	-	-	-	-	-	-	-	0.000
VI	Gadsden	-	-	-	-	-	-	-	-	-
	Region VI Total	-	-	-	-	-	-	-	-	0.000
VII	Jefferson ^(NWF Only)	-	-	-	-	-	-	-	-	-
	Leon - City of Tallahassee ⁽²⁾	-	2.500	-	-	-	-	2.500	-	2.500
	Wakulla - City of Tallahassee	-	-	-	-	-	-	-	0.207	0.207
	Region VII Total	-	2.500	-	-	-	-	2.500	0.207	2.707
TOTALS		-	3.175	-	-	1.422	-	4.598	10.131	14.729

(1) Water withdrawn from surface water sources is typically used for cooling and returned to the source, and is not considered or estimated as consumptive water use.

(2) Arvah B. Hopkins Generating Station, Florida DEP Site Certification #PA 74-03. Provisional amount for estimated use, which was 1.95 mgd in 2015. Water withdrawal projections provided by the City of Tallahassee in August 2019 are 2.5 mgd when adjusted for groundwater discharge.

Public Supply Per Capita Water Use Over Time (gpcd)

Year	Uniform Gross Per Capita	Uniform Residential Per Capita
1995	151.00	
2000	164.00	
2005	145.00	
2010	146.00	
2015	124.37	75.01
2016	122.14	74.08
2017	121.77	78.36
2018	120.03	75.44
2019	124.68	74.57
2020	124.43	75.40
2021	119.10	73.01
2022	118.26	67.47
2023	115.37	64.74



Five-Year Per Capita Averages, 2019-2023

Uniform Gross Per Capita (gpcd) 120.37

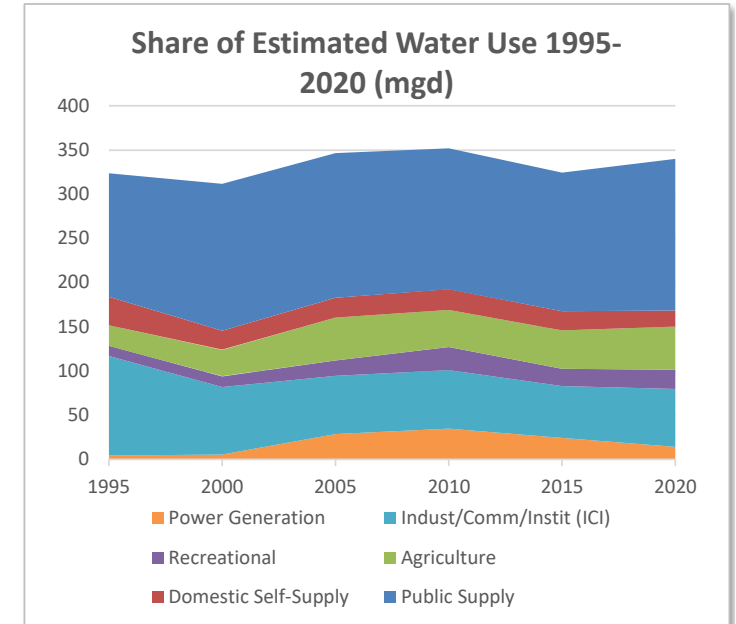
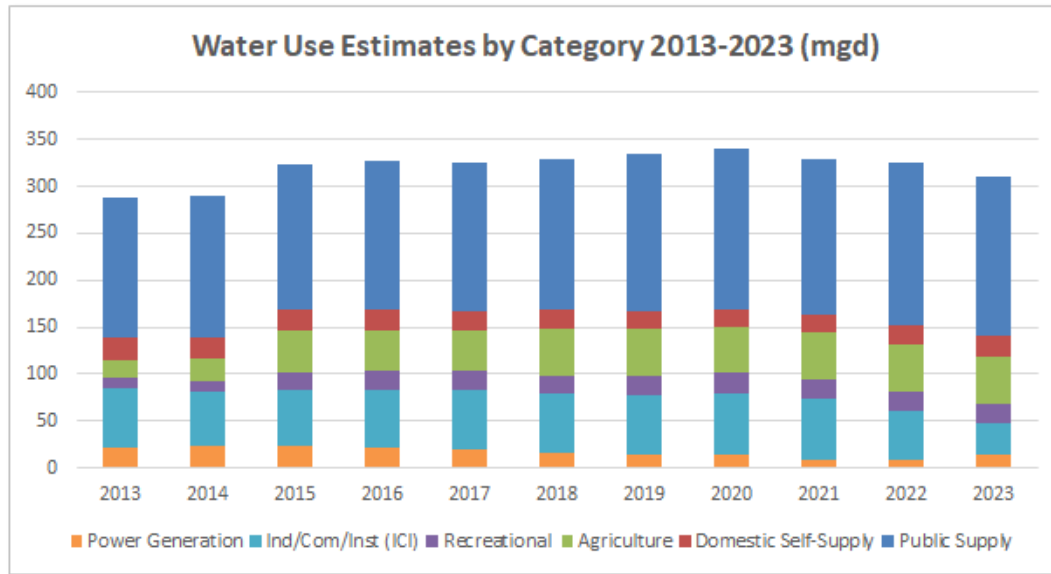
Uniform Residential Per Capita (gpcd) 71.04

NOTES. Public supply per capita rates, in gallons per capita per day (gpcd), are calculated from public supply water use data and estimates of populations served. The sources of per capita rates are district water supply assessments and, since 2012, annual water use reports. Also since 2015, populations served estimates include seasonal resident adjustments in all counties.

Trends in Share of and Total Water Use Estimates By Water Use Category (mgd)

Districtwide	1995	2000	2005	2010	2015	2016	2017	2018	2019	2020	2021	2022	2023
Public Supply	139.790	166.160	163.481	159.570	156.495	159.084	158.717	160.323	167.565	171.597	167.365	174.044	169.275
Domestic Self-Supply	32.140	21.632	22.386	23.272	22.021	20.794	20.249	21.505	19.288	18.127	18.287	20.129	21.941
Agriculture	23.400	30.100	48.630	42.030	43.240	43.360	43.466	49.261	48.879	49.112	49.758	50.761	50.722
Recreational	11.500	12.060	17.310	25.905	19.595	21.594	21.032	19.521	21.902	21.643	20.858	20.207	21.190
Ind/Com/Inst (ICI)	112.450	76.280	66.160	66.440	58.703	61.581	62.448	63.058	62.409	65.691	65.347	51.201	32.418
Power Generation	4.470	5.650	28.530	34.820	24.335	20.676	20.206	16.095	14.360	14.068	8.220	9.049	14.729
Total Water Use	323.750	311.882	346.550	352.030	324.389	327.089	326.118	329.762	334.403	340.238	329.835	325.390	310.275

*2011 water use estimates not compiled at the time of this report.



1. Agriculture and recreational water use estimates vary over time. In some cases, they are the sum of reported water use plus additional estimating methods (for WSAs, and 2015-2023). In other years agriculture and recreational estimates appear to be from reported use only.

2. In 2010, the agriculture water use estimate of 42.03 mgd reflects the value after corrections made in Gadsden County agricultural water use. Therefore, both the agriculture and total water use estimates do not match the WSA 2013 report data (errata never issued).

3. Differences in water use categories over time may reflect moving permittees from one category to another, for example, an industrial use moved to power generation, or splitting a permittees major uses across two or more water use categories (e.g. a municipality that also serves a correctional facility).



Northwest Florida Water Management District
81 Water Management Drive
Havana, Florida 32333-4712

(850) 539-5999

www.nfwwater.com