

# Florida Forever Water Management District Work Plan Annual Report



# Florida Forever Water Management District Work Plan Annual Report

## Table of Contents

Introduction.....	1
Florida Forever Program.....	1
Acquisition Planning.....	2
Approved Acquisition Areas.....	2
Surplus Lands.....	3
Note to Landowners.....	3
Less Than Fee Methods of Land Protection.....	4
DEP Florida Forever Priority List.....	4
Critical Wetlands.....	4
Florida Forever Goals and Numeric Performance Measures.....	4
Land Acquisition Projects.....	6
Florida Forever District Work Plan.....	26
Implementation of the FY 2023-2024 Work Plan.....	27

## List of Tables

Table 1	Land Acquisition Expenditures by Water Management Area.....	1
Table 2	Approved Acquisition Areas.....	2
Table 3	District Surplus Lands.....	3
Table 4	Projects Currently Eligible for Florida Forever Funding.....	26
Table 5	Restoration, Enhancement, and Maintenance (2024).....	30
Table 6	Access and Recreation Management (2024).....	31
Table 7	Projected Funding, Staffing, and Resource Management for FY 2024-2025.....	32

## List of Figures

Figure 1	Proposed Land Acquisition Areas, 2025.....	7
Figure 2	Proposed Land Acquisition Areas, 2025, West Region.....	8
Figure 3	Proposed Land Acquisition Areas, 2025, Central Region.....	15
Figure 4	Proposed Land Acquisition Areas, 2025, East Region.....	21

# Florida Forever Water Management District Work Plan Annual Report

## Introduction

Section 373.199(7), F.S. requires the Northwest Florida Water Management District (NFWWMD, or District) to annually update the Florida Forever Five-Year Work Plan. The 24th annual update of the plan contains information on projects eligible to receive funding under the Florida Forever Act and Land Acquisition Trust Fund and also reports on land management activities; surplus or exchanged lands; and the progress of funding, staffing, and resource management of projects for which the District is responsible. This plan also applies to land acquisition funds deposited into the Land Acquisition Trust Fund pursuant to s. 28(a), Art. X of the State Constitution.

## Florida Forever Program

In 1999, the Florida Legislature passed the Florida Forever Act (s. 259.105, F.S.) which has continued the state’s long-term commitment to environmental land acquisition, restoration of degraded natural areas, and high-quality outdoor recreation opportunities.

While previous programs focused almost exclusively on the acquisition of environmentally sensitive lands, the Florida Forever program is somewhat different in that it authorizes the use of up to half of the program funding for certain types of capital improvement projects. Eligible uses of these funds include water resource development, stormwater management projects, water body restoration, recreation facilities, public access improvements, and removing invasive plants, among others. The remaining 50 percent must be spent on land acquisition. The table below illustrates actual expenditures for land acquisition using Florida Forever funding.

**Table 1 Land Acquisition Expenditures by Water Management Area**

<b>Water Management Area</b>	<b>Acres</b>	<b>Dollars Expended</b>
Perdido River	6,044	\$13,535,865
Escambia River	697	\$ 1,231,692
Yellow River	205	\$ 630,046
Choctawhatchee River	4,269	\$ 6,162,350
Econfina Creek	3,663	\$ 7,977,220
Apalachicola River	1,912	\$ 3,981,132
Chipola River	2,440	\$ 5,922,785
St. Marks River	830	\$ 1,862,050
Ochlockonee River	1,529	\$ 1,951,197
<b>TOTAL</b>	<b>21,589</b>	<b>\$43,254,337</b>

Since the inception of the District’s land acquisition program, the goal has been to protect the floodplains of our major rivers and creeks. In more recent years, the District’s land acquisition program has been focused on springs protection. To date, 225,931 acres have been protected for water resource purposes through the land acquisition efforts of the District either in fee simple or through conservation easements.

## Acquisition Planning

The District employs a watershed approach to select and prioritize the water resources and natural systems within the groundwater contribution areas and major river basins of northwest Florida. Primary among the considerations in this process are how specific floodplain or buffer areas help satisfy the District’s water resources and natural system protection objectives; the availability of funds; the seller’s willingness; how different areas fit into the District’s land management strategy; and the size, accessibility, and overall condition of each property. Recommendations from interest groups, landowners, local governments, agency representatives, and other interested parties are given full consideration in the acquisition process. Existing water management areas (WMAs) include the Perdido River, Escambia River, Blackwater River, Yellow River, Garcon Point, Choctawhatchee River/Holmes Creek, Econfina Creek, Chipola River, and Apalachicola River.

Subject to receiving funding, the District’s acquisition efforts this year will focus on the purchase of fee simple or less than fee simple (conservation easements) projects that protect the quality and quantity of water that flows into and out of springs. The District’s acquisition efforts will focus on acquiring fee or less than fee simple interest in properties located within the Jackson Blue, Chipola, Econfina, and Wakulla springs and Spring Creek Spring Group groundwater contribution areas.

In developing the annual update, District staff review projects proposed by DEP’s Division of State Lands to minimize redundancy and facilitate an efficient and mutually supportive land-acquisition effort.

## Approved Acquisition Areas

The approved acquisition areas listed below are not presented on a priority basis. For each of these waterbodies, it is desirable to acquire both the floodplain and a natural buffer zone to provide further water resource protection.

**Table 2 Approved Acquisition Areas**

Rivers & Creeks Originating In Florida	Rivers and Creeks Originating Outside Florida	Springs	Lakes & Ponds	Other Ecosystems, Basins and Buffers
Wakulla River	Apalachicola River	St. Marks River near Natural Bridge	Lake Jackson	Southwest Escambia County Ecosystem
St. Marks River	Lower Apalachicola River Wetland	Spring Lake Spring Group Area	Sand Hill Lakes	Garcon Point Ecosystem
Econfina Creek and other Tributaries of Deer Point Lake	Chipola River	Bosel Springs Chipola River Springs Waddell Springs		West Bay Buffer
Lafayette Creek	Choctawhatchee River including Holmes Creek	Cypress Spring		Sandy Creek Basin
	Escambia River	Hays Springs		Apalachicola Bay and St. Vincent Sound Buffer
	Blackwater River including Juniper, Big Coldwater, and Coldwater creeks	Econfina Creek Springs		
	Ochlockonee River and its major tributaries	Jackson Blue Spring		
	Yellow and Shoal rivers	Wakulla Spring		
	Perdido River and Bay			

Groundwater Recharge Areas

Such lands may be designated by the District as recharge areas for the Floridan, sand-and-gravel, and other important aquifers and may be acquired in fee simple or less than fee simple.

Donated Lands

The District may accept donations of lands within its major acquisition areas if those lands are necessary for water management, water supply, and the conservation and protection of land and water resources.

Exchange Lands

The District may exchange lands it has acquired under the Florida Forever program for other lands that qualify for acquisition under the program. The District’s Governing Board establishes the terms and conditions it considers necessary to equalize values of the exchange properties. In all such exchanges, the District’s goal will be to ensure there is a net positive environmental benefit.

Mitigation Acquisitions

Under Florida law, unavoidable losses of natural wetlands or wetland functions require “mitigation” through the acquisition or restoration of other nearby wetlands. The District is often the recipient of such lands in the form of donations and also serves as the mitigation agent for the Florida Department of Transportation. Whenever possible, the District attempts to acquire mitigation lands contiguous to its existing ownership, but since wetland type and proximity to the original wetland impact are often paramount, the District will on occasion acquire or manage isolated tracts.

**Surplus Lands**

Section 373.089, F.S., allows the Governing Board of the District to sell (surplus) lands or interests or rights in lands to which the District has acquired title or to which it may hereafter acquire title. Any lands, or interests or rights in lands, determined by the Governing Board to be surplus may be sold by the District at any time for the highest price, but in no case shall the selling price be less than the appraised value.

District staff conducted an evaluation of all District lands to determine if there were any parcels appropriate for surplus. The parcels recommended for surplus were small, non-contiguous, isolated tracts. The following tract was declared surplus by the District’s Governing Board in 2013.

**Table 3 District Surplus Lands**

WMA	Acres	County	Acquired Date	Status
Escambia River	115	Escambia	April 26, 1994	For Sale

**Note to Landowners**

The District’s land acquisition process only involves willing sellers and is usually initiated by landowners offering parcels for sale.

This plan includes a number of areas the District has identified for potential purchase. If your property is included in any of our acquisition areas or maps and you do not desire to sell your land to the District, Florida Statutes require the District to remove your property from the acquisition plan at the earliest opportunity. Please contact the Division of Asset Management at (850) 539-5999 at any time if you wish to remove your property from possible purchase consideration. The District will maintain a list of such requests and annually adjust its acquisition plan accordingly.

## **Less Than Fee Methods of Land Protection**

In less than fee purchases, the District attempts to acquire only those rights in property (i.e., development and land use conversion rights) that are needed to accomplish specific resource protection goals. Such less than fee methods can provide a number of public benefits. First, acquisition funding can be conserved, thereby enabling the protection of more land with limited funds. Also, the property continues in private ownership and thus may remain on local property tax rolls. Moreover, the District does not incur the long-term costs of land management since the property's management and maintenance remains the landowner's responsibility. Not all properties are suitable for less than fee acquisition, but the potential benefits make these kinds of transactions the preferred alternative to the District's typical fee-simple land purchases.

## **DEP Florida Forever Priority List**

The Florida Forever Priority List can be found at:

<https://floridadep.gov/lands/environmental-services/content/florida-forever>.

## **Critical Wetlands**

The 2022 Florida Legislature enacted a law that requires water management districts to annually identify properties that may be classified as "critical wetlands" for potential acquisition using Florida's Land Acquisition Trust Fund (LATF). In response, the District conducted a systematic review of properties throughout the Florida Panhandle to identify wetland properties considered critically important to protecting or restoring wetlands and water resource values and functions. Letters were sent to the owners of the identified priority parcels, as required by section 373.036, F.S., and the District consulted with affected local governments. An initial list of critical wetlands was approved by the Governing Board on September 12, 2024. To date, the District has not received any LATF funding to purchase critical wetlands. Additional information may be found in the FY 2024-25 Strategic Water Management Plan (<https://nwfwater.com/Data-Publications/Reports-Plans/Water-Management-Plans>).

## **Florida Forever Goals and Numeric Performance Measures**

As outlined in Chapter 18-24, F.A.C., the District is required to report on the goals and measures for lands to be acquired under the Florida Forever program. The following page summarizes the goals and measures applicable to the Northwest Florida Water Management District.

## ***Florida Forever Goals and Numeric Performance Measures***

---

Reported as of October 1, 2024

### Rule No. 18-24.0022

(2)(d)1. For proposed acquisitions, see the (Florida Forever) Water Management District Work Plan Annual Report in the Consolidated Annual Report.

(2)(d)2. For proposed acquisitions for water resource development projects, see the (Florida Forever) Water Management District Work Plan Annual Report in the Consolidated Annual Report

(3)(a)2. Refer to (Florida Forever) Capital Improvement Work Plan of the Consolidated Annual Report for funded capital improvements identified in SWIM, stormwater, or restoration plans.

(3)(a)3. NFWFMD lands to be treated for upland invasive, exotic plants = <5,000 acres

The District has not conducted surveys to identify the spatial distribution of invasive exotic plant infestation on District lands. It is known that invasive plant problems exist at varying levels on some District lands, and staff treat with herbicide as needed.

(3)(b) New water to be made available through Florida Forever funding for water resource development - Major water resource development accomplishment has been provided by additions to Econfina Creek Water Management Area (1992-2009). Additionally, Florida Forever funding has in the past contributed to the construction of a 750,000-gallon reuse storage facility for the City of Freeport to serve a 0.6 MGD reuse water service area (project completed in 2009). Funding for water supply development, including construction of water reuse facilities, is primarily provided through State alternative water supply funding, the Water Protection and Sustainability Program Trust Fund, NFWFMD General Fund, and local funding. See the NFWFMD Five-Year Water Resource Development Work Program report and Consolidated Annual Report.

(4)(a)1. NFWFMD lands that are in need of and are undergoing restoration, enhancement, or management by the District.

In need of restoration, enhancement, and management = 435 acres  
Undergoing restoration or enhancement = 1,406 acres  
Restoration completed = 32,480 acres  
Restoration maintenance = 32,480 acres

(4)(a)3. Refer to section 3, (Florida Forever) Capital Improvement Work Plan of the Consolidated Annual Report for capital improvements identified in SWIM, stormwater, or restoration plans.

(4)(a)6. NFWFMD lands under upland invasive, exotic plant maintenance control = <10,000 acres

(4)(b) Refer to Water Projects in the Five-Year Water Resource Development Work Program of the Consolidated Annual Report for quantity of new water made available through regional water supply plans.

(4)(c) See (Florida Forever) Land Acquisition Work Plan (Table 6.6) of the Consolidated Annual Report for resource-based recreation facilities by type.

## **Land Acquisition Projects**

The Florida Forever Act, particularly section 373.199(3) F.S., identifies information that must be included for each Florida Forever Project. Some of the required information is relatively general and applicable to all projects. To reduce the redundancies of this plan, general information is provided separately as part of the District's Five-Year Plan for the Florida Forever Program. Specific land acquisition projects are individually identified and detailed information specific to the project is provided in the following pages.



Figure 1 Proposed Land Acquisition Areas, 2025

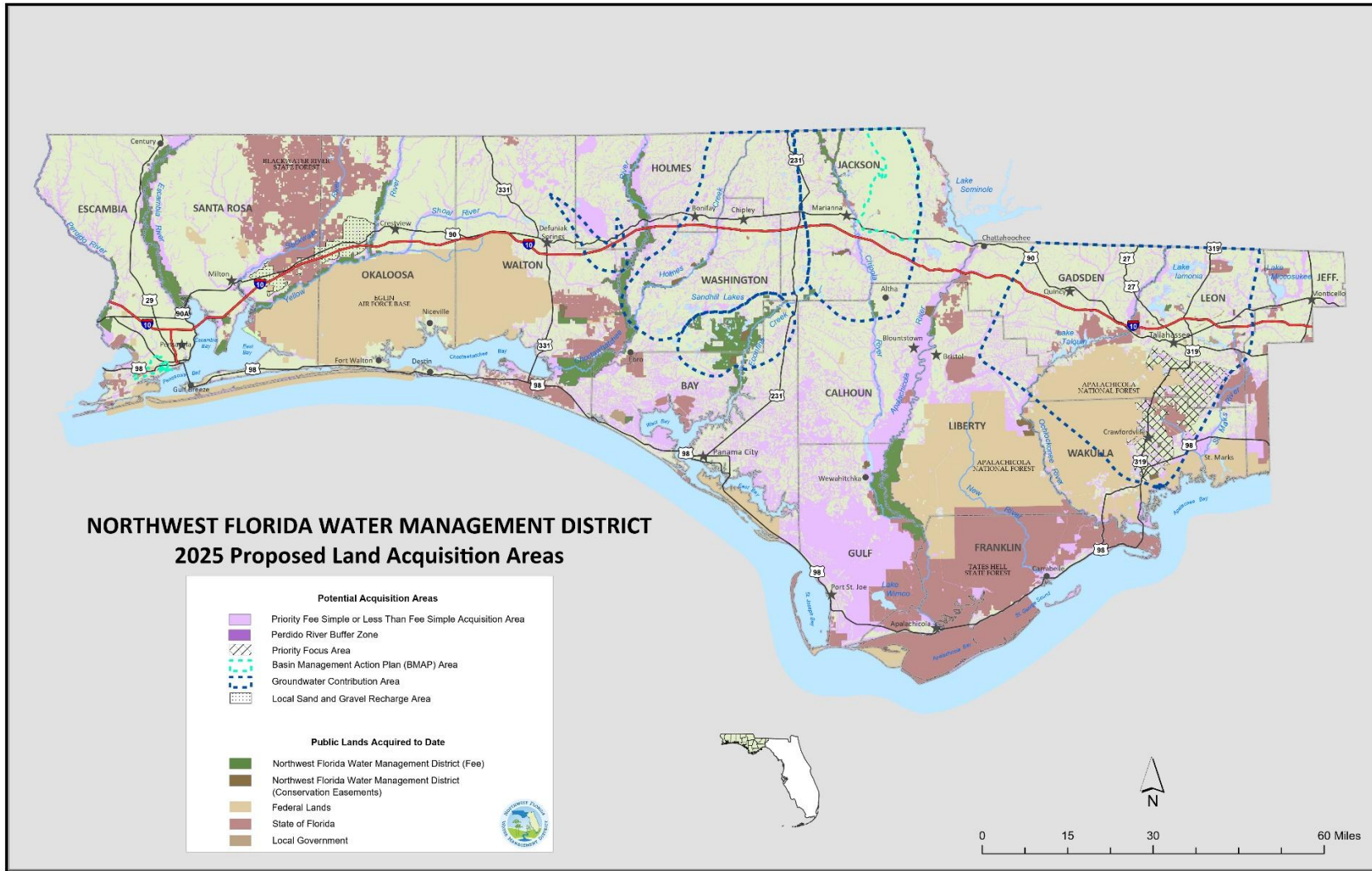
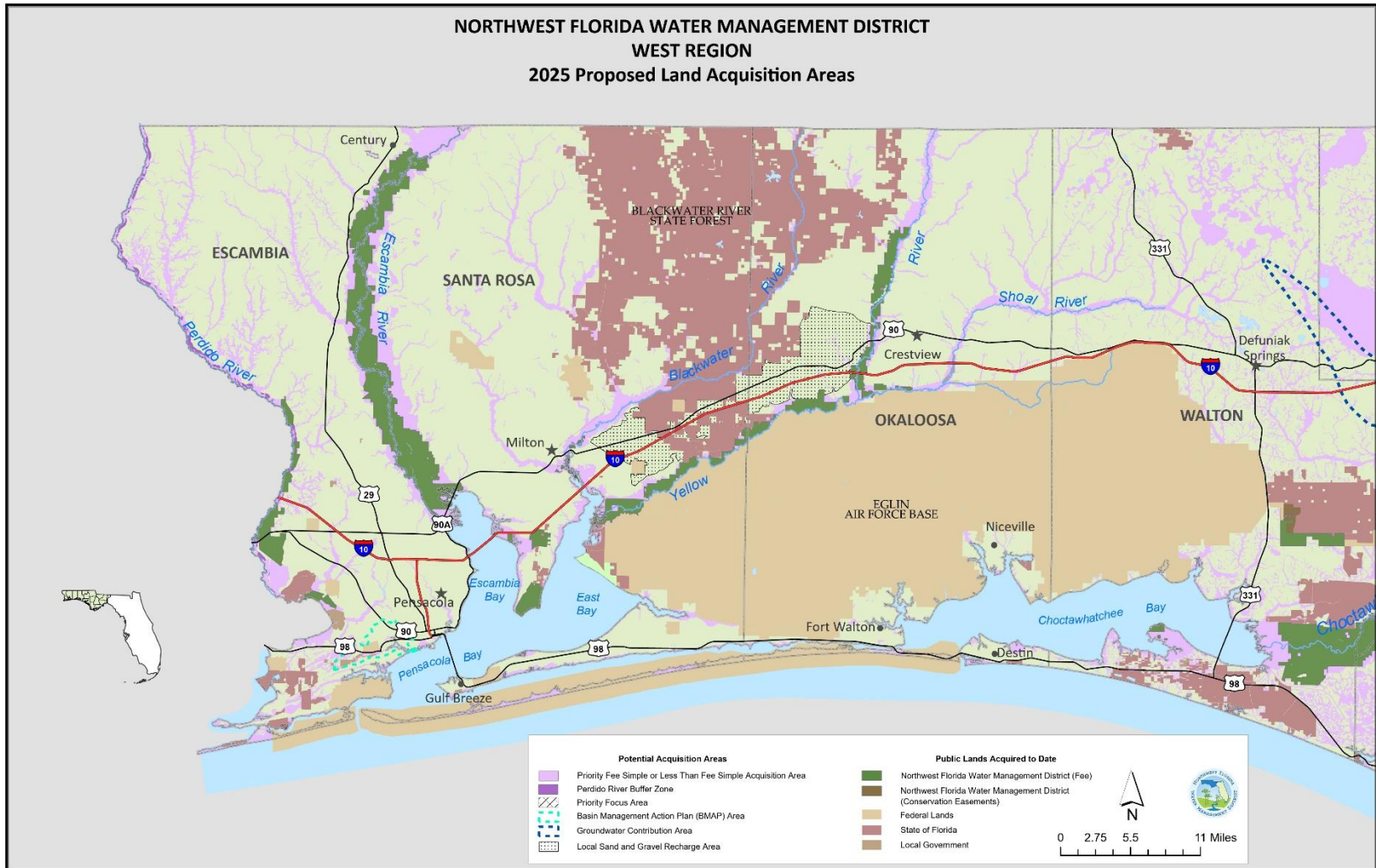


Figure 2 Proposed Land Acquisition Areas, 2025, West Region



# ***FLORIDA FOREVER LAND ACQUISITION PROJECT***

## **Perdido River and Bay Basin**

The Perdido River serves as the state line, separating Florida from Alabama (see Figure 2). The Perdido River has been designated an Outstanding Florida Water and Special Water system, a canoe trail, and a recreation area. The upper part of the river is a shifting sand river system, unique to portions of northwest Florida, south Alabama, southern Mississippi, and eastern Louisiana, while the lower end of the river is characteristic of a blackwater stream. The District owns 6,261 acres in fee simple and four acres in less than fee between the Perdido River and Bay.

The project area is mostly undeveloped and contains a diverse list of species. Acquisition of any floodplain area along the Perdido River, whether in fee or less than fee, will enhance water quality protection efforts for the Perdido Bay system.

Purchases within the Priority Fee Simple or Less than Fee Simple Acquisition Area will be concentrated on floodplain parcels along the river, around the river mouth, and designated tributaries.

The Perdido Bay is an estuarine system which receives fresh water from the Perdido River. Subsidiary embayments within the Perdido Bay estuary include Tarkiln Bay, Arnica Bay, Wolf Bay, Bayou La Launch, and Bayou St. John. Perdido Key separates Perdido Bay, Tarkiln Bay, Arnica Bay, Bayou La Launch, and Bayou St. John from the Gulf of Mexico. Big Lagoon adjoins Perdido Bay to the east, separating it from Pensacola Bay. Currently, the District owns 810.19 acres along Perdido Bay.

Purchases within the Priority Fee Simple or Less than Fee Simple Acquisition Area will be concentrated on floodplain parcels adjacent to the bay which can enhance water quality protection.

### **Public Access**

All District conservation lands are available for public use. Such uses include fishing, hunting, camping, hiking, boating, swimming, and other recreational activities. Access issues are addressed on a parcel-by-parcel basis.

### **Land Acquisition**

Sufficient lands have been identified to allow for a flexible implementation strategy over at least the next five years. The timing of any given acquisition will depend upon such considerations as: availability of funds, Governing Board policy, threats to the resource, availability of willing sellers, tract size, general market conditions, and available staff resources.

# ***FLORIDA FOREVER LAND ACQUISITION PROJECT***

## **Southwest Escambia County Ecosystem**

Several major estuarine drainages, including Jones Swamp, Bayou Grande, Big Lagoon, and Tarkiln Bay, intersect in southwest Escambia County (see Figure 6.2). These, in turn, comprise portions of the Pensacola Bay and Perdido Bay watersheds. The Priority Fee Simple or Less than Fee Simple Areas border a major urban area containing residential and commercial development.

Protecting the ecological integrity of this area is important to the quality of water resources in the Pensacola Bay and Perdido Bay systems. Acquisition will help limit non-point source pollution and untreated stormwater runoff by preventing channelization. Wetlands and upland buffers will also be preserved, and riparian buffer zones will be maintained. Additionally, public access will be improved, and fish, wildlife, and estuarine productivity will be protected.

This acquisition is consistent with a number of major initiatives designed to protect environmental and other public resources in the region. These include water quality treatment systems, acquisition programs for the Jones Swamp Wetland Preserve and the Perdido Pitcher Plant Prairie, and efforts to prevent encroachment on NAS Pensacola. Together with nearby state parks, these acquisitions will provide for a major environmental reserve and greenway system within a rapidly urbanizing area.

### **Local Sand-and-Gravel Recharge Area**

Designated area has groundwater recharge potential.

### **Public Access**

All District conservation lands are available for public use. Such uses include fishing, hunting, camping, hiking, boating, swimming, and other recreational activities. Access issues are addressed on a parcel-by-parcel basis.

### **Land Acquisition**

Sufficient lands have been identified to allow for a flexible implementation strategy over at least the next five years. The timing of any given acquisition will depend upon such considerations as: availability of funds, Governing Board policy, threats to the resource, availability of willing sellers, tract size, general market conditions, and available staff resources.

# ***FLORIDA FOREVER LAND ACQUISITION PROJECT***

## **Escambia River Basin**

Beginning at the confluence of the Conecuh River and Escambia Creek above the Florida-Alabama border and discharging into Escambia Bay, the Escambia River corridor (see Figure 2) contains a rich diversity of plant and animal species, as well as many rare fish and waterfowl. The Escambia River basin is broad and well-drained in the upper reaches, and swampy below Molino, Florida. While the overall water quality is considered good, many point and non-point pollution sources empty into the river. Currently, the District owns 35,413 acres in fee and 19 acres in less than fee along the river.

Purchases within the Priority Fee Simple or Less than Fee Simple Acquisition Area will be concentrated on floodplain parcels around the river mouth and designated tributaries.

### **Public Access**

All District conservation lands are available for public use. Such uses include fishing, hunting, camping, hiking, boating, swimming, and other recreational activities. Access issues are addressed on a parcel-by-parcel basis.

### **Land Acquisition**

Sufficient lands have been identified to allow for a flexible implementation strategy over at least the next five years. The timing of any given acquisition will depend upon such considerations as: availability of funds, Governing Board policy, threats to the resource, availability of willing sellers, tract size, general market conditions, and available staff resources.

# ***FLORIDA FOREVER LAND ACQUISITION PROJECT***

## **Garcon Point Ecosystem**

The Priority Fee Simple or Less Than Fee Simple acquisition area contains a portion of the Garcon Point Peninsula, which borders Pensacola, Escambia, East, and Blackwater bays (see Figure 6.2). The project area is largely undeveloped and includes a variety of natural communities that are in good to excellent condition. The entire tract provides considerable protection to the water quality of the surrounding estuary, as well as harboring a number of rare and endangered species.

The emergent estuarine marsh that borders several miles of shoreline within the project is an important source of organic detritus and nutrients and serves as a nursery for many of the species found in Pensacola Bay. These wetlands function as stormwater filtration and a storm buffer area, as well as providing erosion controls to the neighboring uplands. A minimum of 13 endangered or threatened species are known to live in the region including the recently listed federally endangered reticulated flatwoods salamander. The northern wet prairie portion is known to be an outstanding pitcher plant habitat.

Purchases within the Priority Fee Simple or Less than Fee Simple Acquisition Area will be concentrated on floodplain parcels adjacent to Escambia and East Bays. Currently the District owns 3,245 acres on Garcon Point.

## **Public Access**

All District conservation lands are available for public use. Such uses include fishing, hunting, camping, hiking, boating, swimming, and other recreational activities. Access issues are addressed on a parcel-by-parcel basis.

## **Land Acquisition**

Sufficient lands have been identified to allow for a flexible implementation strategy over at least the next five years. The timing of any given acquisition will depend upon such considerations as: availability of funds, Governing Board policy, threats to the resource, availability of willing sellers, tract size, general market conditions, and available staff resources.

# ***FLORIDA FOREVER LAND ACQUISITION PROJECT***

## **Blackwater River Basin**

Originating in the Conecuh National Forest in Alabama, the Blackwater River (see Figure 6.2) has a large portion of its Florida watershed further protected by the Blackwater River State Forest. In all, nearly 50 miles of the river corridor is remote and undeveloped. As a result, the Blackwater River is considered one of Florida's best-preserved waterways. Currently the District owns 381 acres along the Blackwater River immediately north and south of Milton in Santa Rosa County.

The Priority Fee Simple or Less than Fee Simple Acquisition Area includes considerable floodplain. Purchases within the Priority Fee Simple or Less than Fee Simple Acquisition Area will be concentrated on these parcels. In addition, purchase of lands north and northwest of Eglin Air Force Base (AFB), along the I-10 corridor, would provide approximately 52,000 acres of land that has the potential for future water resource development to supplement the constrained potable water sources in southern Santa Rosa and Okaloosa counties. Acquisitions in this area are consistent with the District's Regional Water Supply Plan for Okaloosa, Santa Rosa, and Walton counties to protect future supply sources.

## **Local Sand-and-Gravel Recharge Area**

In Escambia and Santa Rosa counties, the sand-and-gravel aquifer is the principal source of potable water for public supply. The sand-and-gravel aquifer is unconfined or poorly confined, making it particularly susceptible to contamination by surface land uses. Land acquisition along the I-10 corridor between the Yellow and Blackwater rivers in Santa Rosa County would protect recharge areas that are important for future water supply sources. This area encompasses approximately 52,000 acres.

## **Public Access**

All District conservation lands are available for public use. Such uses include fishing, hunting, camping, hiking, boating, swimming, and other recreational activities. Access issues are addressed on a parcel-by-parcel basis prior to acceptance.

## **Land Acquisition**

Sufficient lands have been identified to allow for a flexible implementation strategy over the next five years or more. The timing of any given acquisition will depend upon such considerations as: availability of funds, Governing Board policy, threats to the resource, availability of willing sellers, tract size, general market conditions, and available staff resources.

# ***FLORIDA FOREVER LAND ACQUISITION PROJECT***

## **Yellow and Shoal River Basin**

The Yellow River has its headwaters in Conecuh National Forest in Alabama and forms the northern border of Eglin AFB across much of eastern Santa Rosa and western Okaloosa counties (see Figure 6.2). The proposed acquisitions would bring floodplain of the Yellow River in Florida under public ownership. Included in the project is a segment of the lower Shoal River, the largest tributary to the Yellow River. The Priority Fee Simple or Less than Fee Simple Acquisition Area will be given to tracts containing considerable floodplain. Currently the District owns 16,553 acres along the Yellow River.

Although the Yellow and Shoal rivers exhibit good overall water quality, both are fed largely by rainwater runoff and are thus susceptible to pollution from land-use activities. The Priority Fee Simple or Less than Fee Simple Acquisition Area would provide water quality protection beginning at the Alabama border. Purchase of lands north and northwest of Eglin AFB, along the I-10 corridor, would provide approximately 52,000 acres of land that has the potential for future water resource development to supplement the strained potable water sources in southern Santa Rosa and Okaloosa counties. Acquisitions in this area are consistent with the District's Regional Water Supply Plan for Okaloosa, Santa Rosa, and Walton counties to protect future supply sources.

## **Local Sand-and-Gravel Recharge Area**

The sand-and-gravel Aquifer is unconfined or poorly confined, making it particularly susceptible to contamination by land uses. Land acquisition along the I-10 corridor between the Yellow and Blackwater rivers in Okaloosa County would protect recharge areas that are important for future water supply sources. This area encompasses approximately 52,000 acres.

## **Public Access**

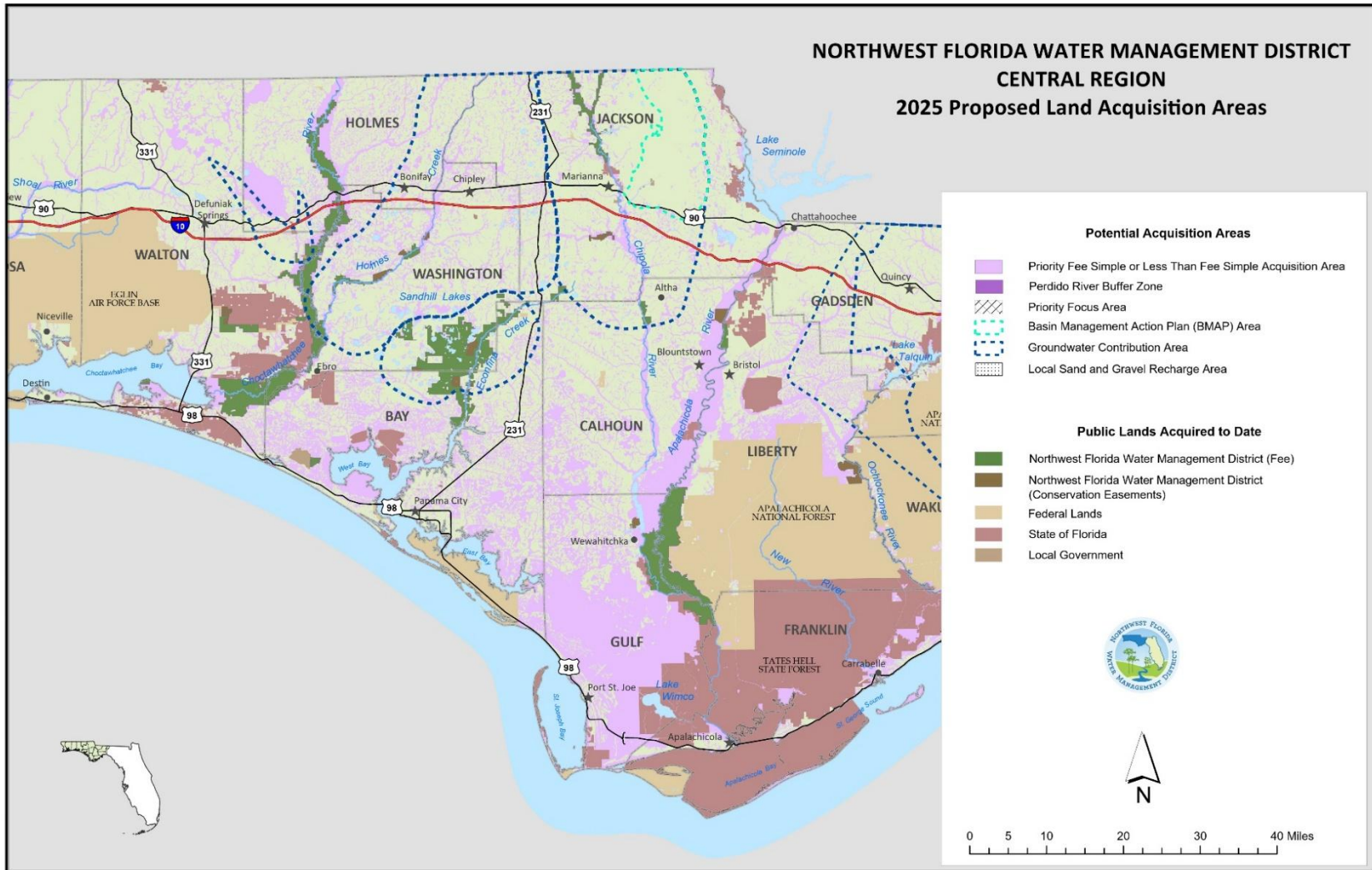
All District conservation lands are available for public use. Such uses include fishing, hunting, camping, hiking, boating, swimming, and other recreational and educational activities. Access issues are addressed on a parcel-by-parcel basis.

## **Land Acquisition**

Sufficient lands have been identified to allow for a flexible implementation strategy over at least the next five years. The timing of any given acquisition will depend upon such considerations as: availability of funds, Governing Board policy, threats to the resource, availability of willing sellers, tract size, general market conditions, and available staff resources.



Figure 3 Proposed Land Acquisition Areas, 2025, Central Region



## ***FLORIDA FOREVER LAND ACQUISITION PROJECT***

### **Lafayette Creek**

Originating in south central Walton County, the Lafayette Creek drainage basin is located northeast of Freeport (see Figure 3). The main stem of the creek begins about seven miles east of Freeport and runs due west for about six miles before it turns south and empties into LaGrange Bayou/Choctawhatchee Bay. Purchases with the Priority Fee Simple or Less than Fee Simple Acquisition Area will protect a portion of Magnolia and Wolf creeks, both of which are significant tributaries to Lafayette Creek, as well as protect many diverse natural communities and habitat types. Currently, the District owns 3,160 acres along the creek, including 420 acres for DOT mitigation purposes.

### **Public Access**

All District conservation lands are available for public use. Such uses include fishing, hunting, camping, hiking, boating, swimming, and other recreational activities. Access issues are addressed on a parcel-by-parcel basis.

### **Land Acquisition**

Sufficient lands have been identified to allow for a flexible implementation strategy over at least the next five years. The timing of any given acquisition will depend upon such considerations as: availability of funds, Governing Board policy, threats to the resource, availability of willing sellers, tract size, general market conditions, and available staff resources.

# ***FLORIDA FOREVER LAND ACQUISITION PROJECT***

## **Choctawhatchee River and Holmes Creek Basin**

Originating in Alabama and flowing into Choctawhatchee Bay, the Choctawhatchee River/Holmes Creek basin encompasses the second largest floodplain in the state (see Figure 3). Approximately 3,133 square miles of the watershed is in Alabama and 2,052 square miles is in Florida. The river is 170 miles long with about 88 miles in Florida. Although the river basin exhibits localized water quality problems, primarily due to agricultural land use in the upper basin, the overall water quality is considered good. The river basin encompasses 57 springs on Holmes Creek and a variety of habitats including bottomland hardwood forests, marshes, and Tupelo-Cypress swamps.

Due to the river corridor's undeveloped nature, the basin provides habitat for a variety of native wildlife, including several endangered plant and animal species. The river also serves as a breeding and migratory area for both the Alligator Gar and the Gulf Sturgeon. The District currently owns 63,735 acres along the river, creek, and bay in fee and less than fee. Purchases within the Priority Fee Simple or Less than Fee Simple Acquisition Area will be concentrated on parcels containing floodplain along the river and designated tributaries such as Holmes Creek.

### **Groundwater Contribution Area**

In addition, a portion of the Choctawhatchee River and all of Holmes Creek is captured within the Groundwater Contribution Area. Properties within this contribution area may be considered as a potential acquisition, especially those properties improving the quality or quantity of water for springs.

### **Public Access**

All District conservation lands are available for public use. Such uses include fishing, hunting, camping, hiking, boating, swimming, and other recreational activities. Access issues are addressed on a parcel-by-parcel basis.

### **Land Acquisition**

Sufficient lands have been identified to allow for a flexible implementation strategy over at least the next five years. The timing of any given acquisition will depend upon such considerations as: availability of funds, Governing Board policy, threats to the resource, availability of willing sellers, tract size, general market conditions, and available staff resources.

# ***FLORIDA FOREVER LAND ACQUISITION PROJECT***

## **West Bay Buffer**

West Bay is the westernmost embayment of the St. Andrew Bay estuary (see Figure 6.3). The bay supports notable shellfish and seagrass communities, important fisheries, and other environmental and economic resources. The West Bay watershed is characterized by extensive pine flatwoods, as well as hardwood forests, cypress wetlands, mixed-forested wetlands, freshwater marshes, wet prairie, and other wetlands. Salt marshes, inland forested wetlands, and associated upland communities are especially prominent in several areas, including the Breakfast Point peninsula and other lands adjacent to the Burnt Mill and Crooked Creek tributaries.

Like other estuaries, the bay is vulnerable to impacts associated with intensive residential and commercial development. Potential impacts include the long-term degradation as a result of non-point source pollution, as well as habitat loss and fragmentation. Acquisitions within the Priority Fee Simple or Less than Fee Simple Acquisition Area would help prevent such degradation by preserving intact and extensive ecosystem of forests, scrub, salt marshes, and freshwater wetlands. Preserving the associated wetland and upland communities in the vicinity of the bay protects water quality by providing a substantial riparian buffer and maintaining the natural hydrology in the vicinity of the bay. The District currently owns approximately 719 acres in the vicinity of the West Bay Buffer.

In addition to providing for public use and water resource protection, this acquisition will be consistent with several ongoing initiatives, including the Bay-Walton Sector Plan. These initiatives also include efforts to restore seagrass communities in the bay and to improve the treatment and management of domestic wastewater.

## **Public Access**

All District conservation lands are available for public use. Such uses include fishing, hunting, camping, hiking, boating, swimming, and other recreational activities. Access issues are addressed on a parcel-by-parcel basis.

## **Land Acquisition**

Sufficient lands have been identified to allow for a flexible implementation strategy over at least the next five years. The timing of any given acquisition will depend upon such considerations as: availability of funds, Governing Board policy, threats to the resource, availability of willing sellers, tract size, general market conditions, and available staff resources.

# FLORIDA FOREVER LAND ACQUISITION PROJECT

## Econfina Creek

Econfina Creek is the major contributor to Deer Point Lake, which serves as the public water supply for Bay County, including Panama City, Panama City Beach, and neighboring communities (see Figure 6.3). Properties along the creek contain several spring-run streams, which are imperiled biological communities. The slope forest communities that border considerable lengths of the creek contain some of the highest species diversity encountered in Florida. The project area features high rolling sandhill habitat, steephead ravines, and numerous sandhill upland lakes. Much of the sand hills area is of excellent quality, with a nearly intact ground cover of wiregrass and dropseed. At least 18 species of rare or endangered plants inhabit the sand hills area. The District currently owns 44,469 acres in fee and less than fee, including the 2,155-acre Sand Hill Lakes Mitigation Bank. Purchases will be concentrated on parcels within the Groundwater Contribution Area as well as purchases that improve the quality or quantity of water for springs.

## Groundwater Contribution Area

The upper portion of the acquisition project is a significant groundwater contribution area of the Floridan Aquifer and properties within this contribution area may be considered as a potential acquisition, especially those properties improving the quality and quantity of water for springs. The majority of the acreage purchased by the District and targeted for future purchase is one of the most important groundwater contribution areas for the Floridan Aquifer in northwest Florida. Recharge rates in the area have been estimated at 25 to 40 inches per year, and this recharge drives the spring flows along Econfina Creek, the largest tributary of the Deer Point Lake Reservoir. The reservoir currently provides approximately 50 million gallons per day for residential, commercial, and industrial water uses in Bay County.

## Public Access

All District conservation lands are available for public use. Such uses include fishing, hunting, camping, hiking, boating, swimming, and other recreational activities. Access issues are addressed on a parcel-by-parcel basis.

## Land Acquisition

Sufficient lands have been identified to allow for a flexible implementation strategy over at least the next five years. The timing of any given acquisition will depend upon such considerations as: availability of funds, Governing Board policy, threats to the resource, availability of willing sellers, tract size, general market conditions, and available staff resources.

## ***FLORIDA FOREVER LAND ACQUISITION PROJECT***

### **Sandy Creek Basin**

Sandy Creek is a major tributary of East Bay, the easternmost embayment of the St. Andrew Bay estuary (see Figure 6.3). The creek's basin is characterized by extensive wet pine flatwoods, as well as hardwood forests, salt marshes, cypress wetlands, mixed forested wetlands, freshwater marshes, wet prairie, and other wetlands. Salt and freshwater marshes, inland forested wetlands, and associated upland communities are especially prominent along the creek and its tributaries.

Preservation of the Sandy Creek basin will protect a major tributary basin of East Bay. In doing so, it would preserve water quality and a mosaic of interconnected upland, wetland, stream, and estuarine habitats. Purchases within the Priority Fee Simple and Less than Fee Simple Acquisition Area would protect water quality by providing a substantial riparian buffer and maintaining natural hydrology.

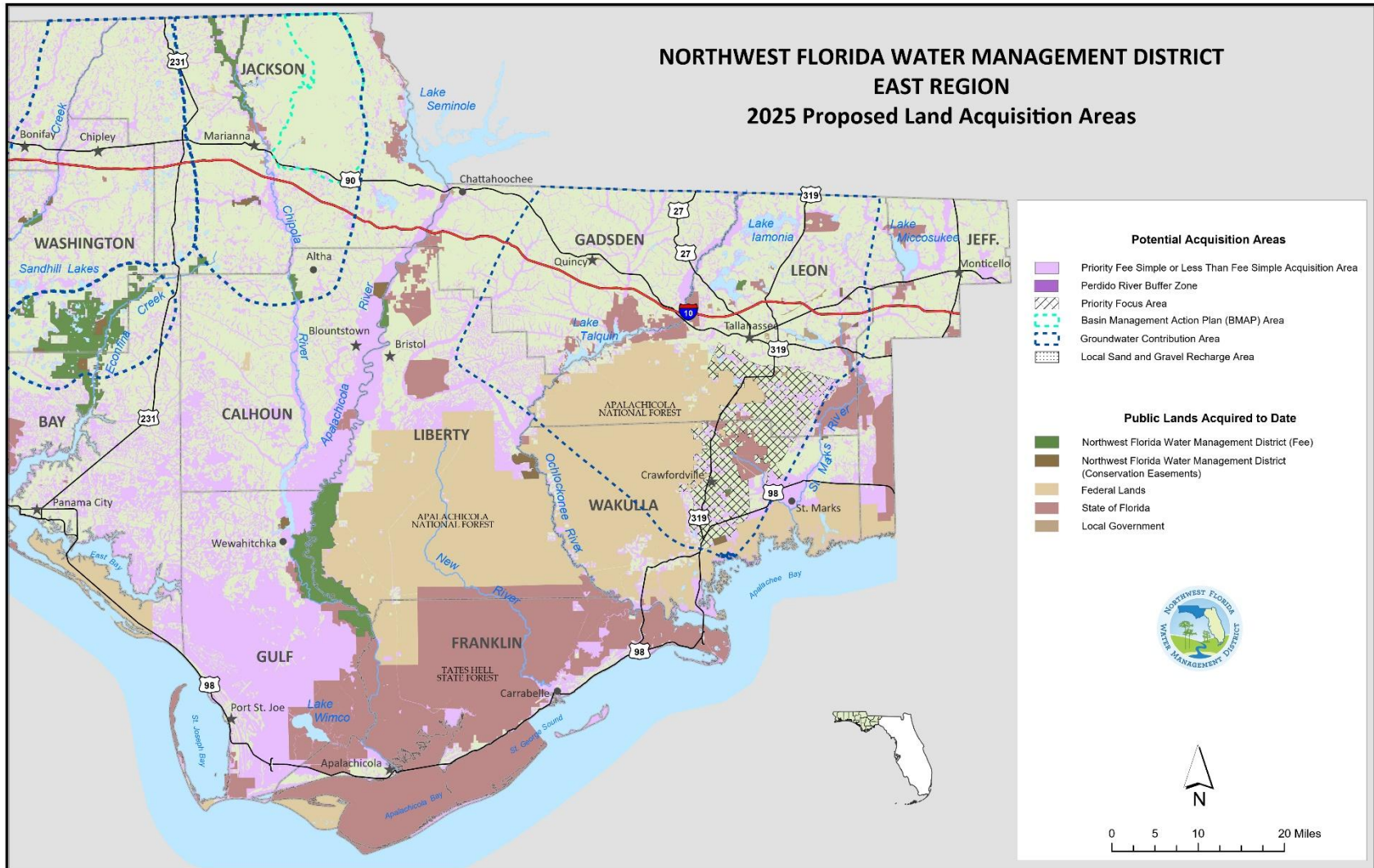
### **Public Access**

All District conservation lands are available for public use. Such uses include fishing, hunting, camping, hiking, boating, swimming, and other recreational activities. Access issues are addressed on a parcel-by-parcel basis.

### **Land Acquisition**

Sufficient lands have been identified to allow for a flexible implementation strategy over at least the next five years. The timing of any given acquisition will depend upon such considerations as: availability of funds, Governing Board policy, threats to the resource, availability of willing sellers, tract size, general market conditions, and available staff resources.

Figure 4 Proposed Land Acquisition Areas, 2025, East Region



# ***FLORIDA FOREVER LAND ACQUISITION PROJECT***

## **Chipola River Basin**

Areas along the Chipola River have been identified as a Priority Fee Simple or Less than Fee Simple Acquisition Area. The area lies in Calhoun and Jackson counties (see Figure 6.4). Acquisitions along the Chipola River will help protect miles of the riverbank. In 2009, the District acquired 1,377.76 acres in fee along the Middle Chipola River, including the “Look-N-Tremble” rapids. The District now owns a total of 9,094 acres in fee simple and holds a conservation easement on 1,011 acres in the Chipola River Basin.

An additional area is identified for Priority Fee Simple or Less than Fee Simple Acquisition along the Chipola River. Spring Lake Spring Group is located in central Jackson County. Acquisition of land in the Spring Lake Spring Group area with its numerous springs and tributaries which flow into the Chipola River will provide enhanced water resource protection to the area.

### *Jackson Blue Spring BMAP and Chipola Springs Groundwater Contribution Area (GWCA)*

The Jackson Blue Spring BMAP Area, east of the Chipola River, and the Chipola River Springs GWCA, have been identified for fee simple or less than fee simple acquisition to provide protection to Blue Spring and the groundwater contribution area in Jackson County. Properties within this BMAP or contribution area may be considered as a potential acquisition, especially those properties improving the quality or quantity of water for springs.

### *Public Access*

All District conservation lands are available for public use. Such uses include fishing, hunting, camping, hiking, boating, swimming, and other recreational activities. Access issues are addressed on a parcel-by-parcel basis.

### *Land Acquisition*

Sufficient lands have been identified to allow for a flexible implementation strategy over at least the next five years. The timing of any given acquisition will depend upon such considerations as: availability of funds, Governing Board policy, threats to the resource, availability of willing sellers, tract size, general market conditions, and available staff resources.



# ***FLORIDA FOREVER LAND ACQUISITION PROJECT***

## **Apalachicola Bay and River**

Apalachicola Bay has been recognized as a resource of state, federal, and international significance. The bay has extensive fish and shellfish resources, and it supports noteworthy commercial and recreational fisheries and other recreational and economic activities. It has been designated an Outstanding Florida Water, a State Aquatic Preserve, and an International Biosphere Reserve. It includes the Apalachicola Bay National Estuarine Research Reserve and the St. Vincent National Wildlife Refuge (see Figure 6.4). State and federal agencies, as well as the District, have made extensive investments in acquiring and protecting lands throughout the basin.

Like other northwest Florida estuaries, Apalachicola Bay is vulnerable to impacts associated with development. Such potential impacts include the long-term effects of non-point source pollution and habitat loss and fragmentation. The proposed acquisition would help prevent such degradation by preserving the integrated forest and wetland community bordering St. Vincent Sound and Apalachicola Bay. The acquisition would limit new sources of pollution, prevent habitat loss and fragmentation, and protect the stability and integrity of littoral vegetation. The acquisition would also protect water quality by providing a substantial riparian buffer which would help prevent channelization from new impervious surfaces.

The Apalachicola River begins below Lake Seminole at the confluence of the Chattahoochee and Flint rivers (see Figure 6.4). It has the largest floodplain in the state and is widely regarded as one of the state's most important natural resources. The Apalachicola River supports the highly productive fishery in Apalachicola Bay. The District owns 36,823 acres of river floodplain and holds a conservation easement on 1,550 acres.

Major habitat types along the Apalachicola River include coastal marshes, freshwater marshes, flatwoods, and bottomland hardwood swamp. Water tupelo, Ogeechee tupelo, Bald cypress, Carolina ash, and Swamp tupelo have been identified in the floodplain, as well as numerous species of rare fish. Substantial additional acreage of the Apalachicola system is owned by other public agencies and private conservation organizations. Purchases will be concentrated on parcels within the Priority Fee Simple or Less than fee Simple Acquisition Area.

### **Public Access**

All District conservation lands are available for public use. Such uses include fishing, hunting, camping, hiking, boating, swimming, and other recreational activities. Access issues are addressed on a parcel-by-parcel basis.

### **Land Acquisition**

Sufficient lands have been identified to allow for a flexible implementation strategy over at least the next five years. The timing of any given acquisition will depend upon such considerations as: availability of funds, Governing Board policy, threats to the resource, availability of willing sellers, tract size, general market conditions, and available staff resources.

# ***FLORIDA FOREVER LAND ACQUISITION PROJECT***

## **Ochlockonee River Basin**

The Ochlockonee River originates in the coastal plain of Georgia and traverses parts of five Florida counties (see Figure 6.4). Water quality in the river is lowest when it enters Florida and generally improves as it flows closer to the Gulf of Mexico. The Ochlockonee is primarily fed by rainwater runoff and is therefore susceptible to pollution by land-use activities. Large parts of the watershed are publicly owned, including Joe Budd Wildlife Management Area, Lake Talquin State Forest, and Apalachicola National Forest.

The District's primary focus is to acquire less than fee rights on privately owned floodplain land separating existing federal and state properties. Public ownership of the erosion-prone lands bordering this usually fast-flowing river will reduce water quality degradation. The District presently has 3,675 acres in less than fee holdings in the area.

### **Public Access**

All District conservation lands are available for public use. Such uses include fishing, hunting, camping, hiking, boating, swimming, and other recreational activities. Access issues are addressed on a parcel-by-parcel basis.

### **Land Acquisition**

Sufficient lands have been identified to allow for a flexible implementation strategy over at least the next five years. The timing of any given acquisition will depend upon such considerations as: availability of funds, Governing Board policy, threats to the resource, availability of willing sellers, tract size, general market conditions, and available staff resources.

## ***FLORIDA FOREVER LAND ACQUISITION PROJECT***

### **St. Marks and Wakulla Rivers**

The Wakulla River originates at Wakulla Spring and flows south approximately 10 miles to join the St. Marks River at the town of St. Marks in Wakulla County (see Figure 6.4). The St. Marks River starts east of Tallahassee as a narrow stream, widens considerably below Horn Spring, and then disappears underground at Natural Bridge. After reemerging as a much stronger river at St. Marks Spring, it flows 11 miles to its confluence with the Wakulla River. The St. Marks River supports one of the most heavily used inshore saltwater fisheries in north Florida, the viability of which is largely dependent on the quality of freshwater flowing into the estuarine system. Both the Wakulla Springs State Park and the St. Marks National Wildlife Refuge are major refuges for numerous biological species. The District presently has 1,500 acres under less than fee acquisition and 131.49 acres in fee simple in the area.

### **Wakulla Springs BMAP and Priority Focus Area**

Within the Upper Wakulla River and Wakulla Springs BMAP, the Priority Focus Area, east of the Apalachicola National Forest, has been identified for fee simple or less than fee simple acquisition to provide protection to the groundwater contribution area in Wakulla County. Properties within this contribution area may be considered as a potential acquisition, especially those properties improving the quality or quantity of water for springs.

### **Land Acquisition**

Sufficient lands have been identified to allow for a flexible implementation strategy over at least the next five years. The timing of any given acquisition will depend upon such considerations as: availability of funds, Governing Board policy, threats to the resource, availability of willing sellers, tract size, general market conditions, and available staff resources.

## Florida Forever District Work Plan

As required by section 373.199(2), F.S., a District five-year work plan identifies and includes projects that further the goals of the Florida Forever Act (section 259.105, F.S.). These include priorities identified in approved Surface Water Improvement and Management (SWIM) plans, Save Our Rivers land acquisition lists, stormwater management and water resource development projects, springs and water body restoration projects, and other eligible activities that would assist in meeting the goals of Florida Forever.

From 2003 to 2008, the District provided grant funding to local governments for capital improvements that help implement SWIM projects, water resource development projects, and projects included within stormwater master plans. The program awarded more than \$23 million for 55 stormwater retrofit, restoration, and reuse projects. These grants leveraged significant additional funding, with more than \$52 million in local and other match funding allocated to the approved projects.

No significant appropriations of Florida Forever funds for capital improvements have been made since FY 2008-09. Table 6.4 identifies conceptual projects considered eligible for future Florida Forever capital improvement funding.

**Table 4 Projects Currently Eligible for Florida Forever Funding**

Project	Description	Status	Estimated Cost
Unpaved road sedimentation abatement	Unpaved road stabilization to reduce sedimentation and non-point source pollution; supports water quality improvement and habitat restoration objectives of SWIM plans for all District watersheds	Planning	TBD
Spring habitat restoration	Construction activities to restore riparian and aquatic habitats and shorelines associated with northwest Florida springs and to improve compatible public access	Planning	TBD
Stormwater retrofit facilities	Construction of cooperative stormwater retrofit projects, improving water quality and flood protection in accordance with approved SWIM plans	Planning	TBD
Reclaimed water storage facilities	Construction of reclaimed water storage facilities that contribute to water quality improvement and conservation and protection of water resources	Planning	TBD
Hydrologic, wetland, and shoreline restoration	Restoration of shoreline, wetland, and riparian habitats and hydrologic functions to improve water and habitat quality and to enhance public access, consistent with SWIM plans	Planning	TBD

Project specifics, as noted in section 373.199(2), (3), (4) and (5), F.S., will be provided in the future if projects are able to advance beyond the preliminary planning stage.

Future Florida Forever or special legislative appropriations, and funding from the Land Acquisition Trust Fund, federal grants, local governments, other local matching resources, and potentially other sources

may contribute to the implementation of these projects. Final approval of funding for any project requires District Governing Board approval.

## **Implementation of the FY 2023-2024 Work Plan**

### **Land Acquisition**

In 2024, the District surplused 10.03 acres, an isolated parcel in Washington County for \$32,600. The District also conducted an exchange of 137.77 acres for 158.98 acres and received a donation of a conservation easement on 55.50 acres both in Washington County.

### **Land Management**

In October 2018, Hurricane Michael severely impacted District lands and the District's Econfina Field Office. Recovery from Hurricane Michael became the highest priority for the District's land managers in the central and eastern land management regions. Recovery activities included initial damage assessments, securing of facilities and clearing debris for essential access, planning and implementing salvage timber harvests, clearing and repairing roads and firelines, clearing and repairing recreation sites, contracting for various hurricane recovery activities, and coordinating with FEMA. In addition to hurricane recovery, the District completed numerous land management activities during Fiscal Year 2023-2024. Management and restoration efforts included prescribed burns, native species planting, exotic plant and animal control efforts, as well as timber harvesting and thinning, across the District's 211,732 managed acres. In addition, the District maintains and improves public access and recreational amenities such as boat ramps, primitive campsites, and swimming and picnic areas. In the pages that follow, Table 6.5 and Table 6.6 provide additional information on specific land restoration activities completed during the year. The Fiscal Year 2024-2025 staffing and management budget by WMA can be found in Table 7.

To date, the District has conserved and protected 225,931 acres primarily through fee simple acquisition. These lands help promote wetland and floodplain functions, groundwater recharge, surface and groundwater quality, and fish and wildlife habitat, as well as protect natural systems. All District-owned lands are accessible to the public and are managed to provide public access and resource-based recreation.

District lands include the majority of the Escambia and Choctawhatchee river floodplains, as well as extensive lands along the Perdido, Blackwater, Yellow, Shoal, Apalachicola, and St. Marks/Wakulla rivers; Lafayette, Holmes, and Econfina creeks; and on Perdido Bay, Garcon Point, and Live Oak Point. In addition, the District manages and conducts habitat restoration and maintenance on Yellow River Ranch, Live Oak Point, Ward Creek West, and Sand Hill Lakes Mitigation Bank. The District has acquired the majority of the groundwater recharge area for springs that discharge into Econfina Creek and form a crucial component of the groundwater contribution to Deer Point Lake Reservoir.

### **Land Management Accomplishments (FY 2023-24)**

- District contractors and in-house staff conducted prescribed burns for wildfire-fuel reduction on approximately 9,932 acres of District lands. In addition, vegetation management (herbicide) and habitat enhancements were conducted on 1,692 acres.
- 5,049 camping permits were issued at 101 reservation-only sites on District lands.
- 25 special resource area permits were issued on District property.

- Three timber harvests totaling 975 acres were active, removing offsite sand pine and thinning loblolly and slash pine.
- More than 6,299 acres of District-owned land were surveyed for invasive exotic plants and control measures were implemented for identified problem areas.
- Hurricane debris removal was completed on 576 acres.
- Improved more than 30 miles of District owned roads for erosion control and improved public access.
- Reopened all remaining Hurricane Michael impacted District recreation sites and completed restoration projects at Whitewater Lake; Williford Spring; Wolf Pond South, Pine Ridge and Sparkleberry Equestrian Areas, Florida River Island, and the Bellamy Bridge/Marianna Tract.

## **Restoration**

The District accomplishes water resource restoration through several interrelated programs, primarily Surface Water Improvement and Management (SWIM), Land Management, longleaf reforestation, and mitigation.

Approved District plans with substantial restoration components include the following:

- *Apalachicola River and Bay SWIM Plan (2017)*
- *Capital Improvements Plan (Annual)*
- *Choctawhatchee River and Bay SWIM Plan (2017)*
- *Ochlockonee River and Bay SWIM Plan (2017)*
- *Pensacola Bay System SWIM Plan (2017)*
- *Perdido River and Bay SWIM Plan (2017)*
- *St. Andrew Bay Watershed SWIM Plan (2017)*
- *St. Marks River and Apalachee Bay Watershed SWIM Plan (2017)*
- *Tate's Hell State Forest Hydrologic Restoration Plan (2010)*
- *NFWFMD In-Lieu Fee Mitigation Program Final Instrument (2014)*
- *Sand Hill Lakes Mitigation Bank Mitigation Banking Instrument (2006)*
- *East Region Land Management Plan (2019)*
- *West Region Land Management Plan (2020)*
- *Central Region Land Management Plan (2021)*

## **Restoration Accomplishments (FY 2023-24)**

- The District completed hand planting of 769 acres of longleaf pine reforestation and 36 acres of native grass restoration. These restoration activities improve upland habitat and serve important water resource functions by enhancing water recharge and providing water quality benefits. This work included site preparation and planting of 550,000 longleaf pine tubelings within the Apalachicola River, Econfina Creek and Chipola River WMAs and 175,000 mixed upland grasses within the Perdido River Water Management Area
- The District partially completed shoreline habitat and salt marsh restoration at Live Oak Point in Walton County. The project includes establishment of breakwaters and salt marsh vegetation on over 4,600 feet of shoreline on the south shore of Choctawhatchee Bay (approximately 3,680 feet of breakwaters have been completed). Live Oak Point contains the

largest salt marsh system (approximately 1,000 acres) in Choctawhatchee Bay. The marsh has been subject to rapid erosion, with recent shoreline retreat averaging 3-4 feet per year (erosion has been halted where breakwaters have been completed)

- The District continued a stabilization and restoration project at Cypress Spring. Improvements include shoreline stabilization and enhancement, boardwalks and steps at entrance and exit points, and recreation amenities to prevent further degradation of the shoreline from recreational use. The project will improve water quality, restore the historical shoreline that has been impacted by erosion, and prevent destruction of habitat resulting from erosion and recreational use on the spring run and Holmes Creek.

**Table 5 Restoration, Enhancement, and Maintenance (2024)**

Water Management Area	Acres Burned					Acres Planted					Acres Harvested				Acres Treated
	Total	Fuel Reduction	Site Preparation	Growing Season	Wiregrass Propagation	Total	Upland/Wetland Wiregrass and Toothache Grass	Longleaf Pine	Slash Pine	Hardwood	Total	Restoration	Thinning	Habitat Restoration	For Invasive, Non-native or Off-site Species
Escambia River	111	111													134
Garcon Point															24
Blackwater River															
Yellow River	221	221													79
Perdido River	565	565													373
Choctawhatchee River	2,188	1,148		1,040						540		540			3,164
Econfina Creek	5,790	5,314	42	353	81	479		479		435	435				2,183
St. Andrews	605	455			150										25
Carter Restoration	1,359	589		770											
Ward Creek West															
Devils Swamp Restoration															
Chipola River	569	405	164			164		164							30
Apalachicola River						75		75							5
Lake Jackson															15
St. Marks/Wakulla Rivers															5
<b>Totals</b>	<b>11,408</b>	<b>8,808</b>	<b>206</b>	<b>2,163</b>	<b>231</b>	<b>718</b>		<b>718</b>		<b>975</b>	<b>435</b>	<b>540</b>		<b>6,037</b>	



**Table 6 Access and Recreation Management (2024)**

Water Management Area	Picnic Areas	Day Use Sites	Parking Areas	Reserved Camp Sites	Boat, Canoe/Kayak Landings	Portolet Stations	Horse Trail	Canoe Trail	Hiking Trail	Nature Trail	Bike Trail	Access Road	Camp Site Reservations	General Purpose (boundary signs)	Information Signs on District Lands	Weather Pavilions and Wildlife Viewing Towers
	Number Maintained						Miles Maintained						Issued	Signs		Maintained
Escambia River	6	11	12	28	11	11			1	2		27	1,374	42	16	20
Garcon Point		2	2						3			1		12		
Blackwater River	1	3	3		2					1				5		1
Yellow River		3	3		3			50				36		26	4	
Perdido River	3	3	4	1	4	8	6	15	6	1	10	32	94	38	12	1
Choctawhatchee River	12	15	15	23	14	10		15	11			55	1,189		21	13
Econfina Creek (incl. Carter Tract)	15	22	22	36	14	15	56	22	18	2		269	1,914		42	49
Chipola River	1	4	5	3	2	2		6				11	243			1
Apalachicola River	2	2	2	10	2	1						8	235			13
Lake Jackson	1	2	2			1	7		10		7	9				2
St. Marks/Wakulla Rivers		1	2			1			3	3	3	3		30	4	1
<b>Totals</b>	<b>41</b>	<b>68</b>	<b>72</b>	<b>101</b>	<b>52</b>	<b>49</b>	<b>69</b>	<b>108</b>	<b>52</b>	<b>9</b>	<b>20</b>	<b>451</b>	<b>5,049</b>	<b>151</b>	<b>99</b>	<b>101</b>

**Table 7 Projected Funding, Staffing, and Resource Management for FY 2024-25**

Region	Water Management Area	Acres	Assigned Staff	Total Funding	Funding for Resource Management
Western	Escambia	35,413		\$84,165	\$84,165
	Escambia Conservation Easements	19		\$250	\$250
	Garcon Point	3,245		\$41,840	\$41,840
	Yellow	16,553		\$38,492	\$38,492
	Blackwater	381		\$5,096	\$5,096
	Perdido	6,261		\$143,950	\$143,950
	Perdido Conservation Easements	4		\$250	\$250
	<b>Western Region Total</b>	<b>61,876</b>	<b>4</b>	<b>\$314,043</b>	<b>\$314,043</b>
Central	Choctawhatchee	60,827		\$325,673	\$325,673
	Choctawhatchee/Holmes Conservation Easements	2,908		\$250	\$250
	Econfina	39,592		\$667,038	\$667,038
	St. Andrew/Econfina Conservation Easements	2,722		\$500	\$500
	Ward Creek West	719		\$0	\$0
	Carter Restoration	2,155		\$75,000	\$75,000
	<b>Central Region Total</b>	<b>108,923</b>	<b>7</b>	<b>\$1,068,461</b>	<b>\$1,068,461</b>
Eastern	Chipola	9,094		\$73,578	\$73,578
	Apalachicola	36,823		\$29,980	\$29,980
	Apalachicola/Chipola Conservation Easements	3,370		\$250	\$250
	Lake Jackson	539		\$76,100	\$76,100
	St. Marks/Wakulla Rivers	131		\$13,273	\$13,273
	St. Marks/Wakulla Rivers Conservation Easements	1,500		\$250	\$250
	Ochlockonee Conservation Easements	3,675		\$250	\$250
	<b>Eastern Region Total</b>	<b>55,132</b>	<b>2</b>	<b>\$193,681</b>	<b>\$193,681</b>
<b>Regional Totals</b>		<b>225,931</b>	<b>13</b>	<b>\$1,576,185</b>	<b>\$1,576,185</b>

**Projected Funding, Staffing, and Resource Management for FY 2024-25 (cont.)**

<b>Other Projects</b>	<b>Acres</b>	<b>Assigned Staff</b>	<b>Total Funding</b>	<b>Funding for Resource Management</b>
Land Management Administration		5	\$2,267,117	\$63,770
IT Initiative			\$661,911	\$368,173
Land Management Database			\$92,349	\$87,300
Brunson Landing Tract (owned by FDEP)	348		\$9,611	\$9,611
Washington County School Board Donation			\$327	\$327
Hurricane/Tornado Recovery			\$2,500,000	\$2,500,000
Cypress Spring Recreation Area			\$36,217	\$36,217
<b>Grand Total</b>	<b>226,279</b>	<b>18</b>	<b>\$7,143,717</b>	<b>\$4,641,583</b>