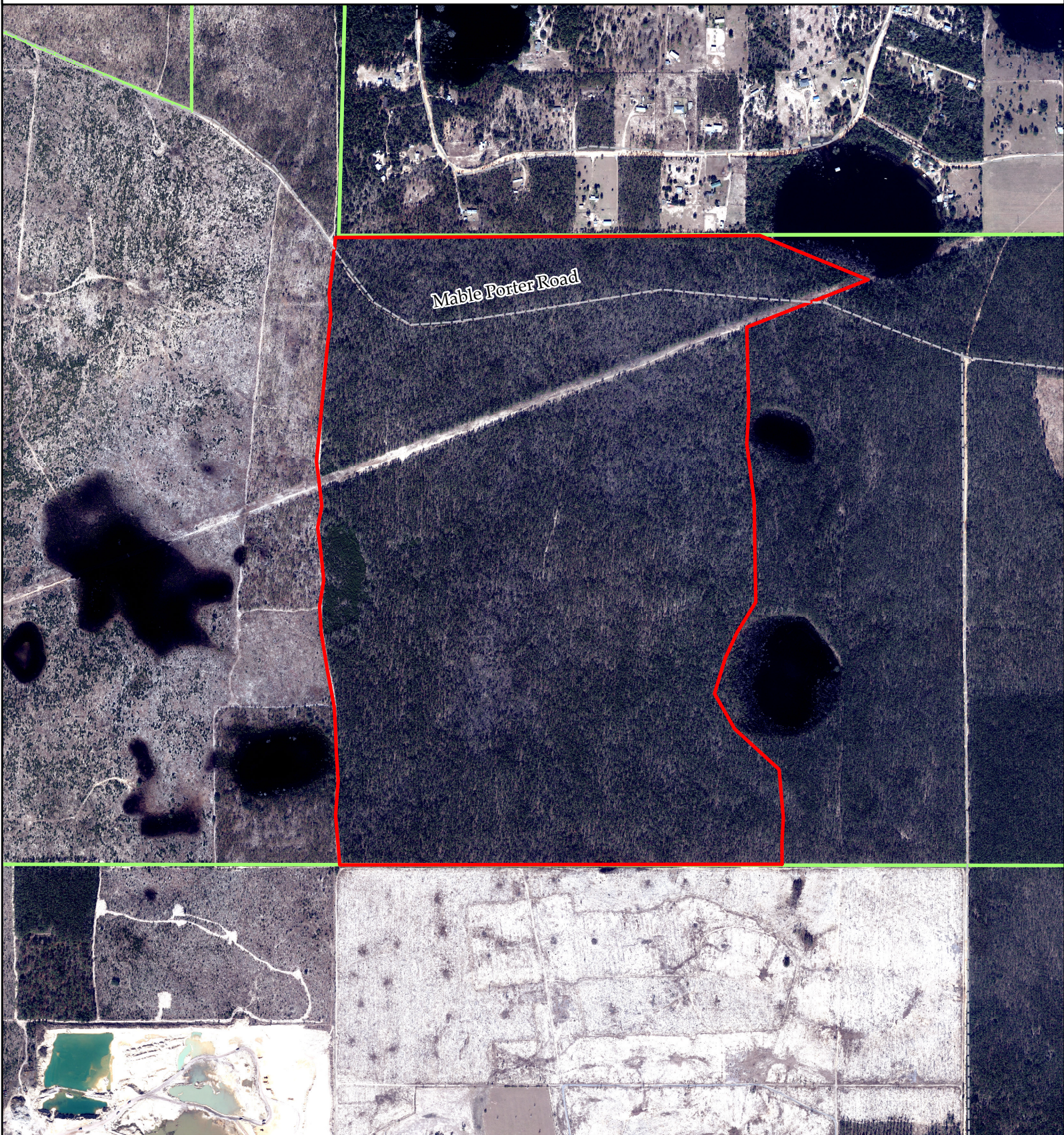




Exhibit Map 2



2025 Econfinia Creek Sand Pine Timber Sale - Unit 2 Mable Porter
Econfinia Creek Water Management Area
Sections 33 and 34, T1N, R14W
Washington County, Florida
438 Acres

-  Harvest Area
-  District Lands

0 0.1 0.2 0.4 Miles

