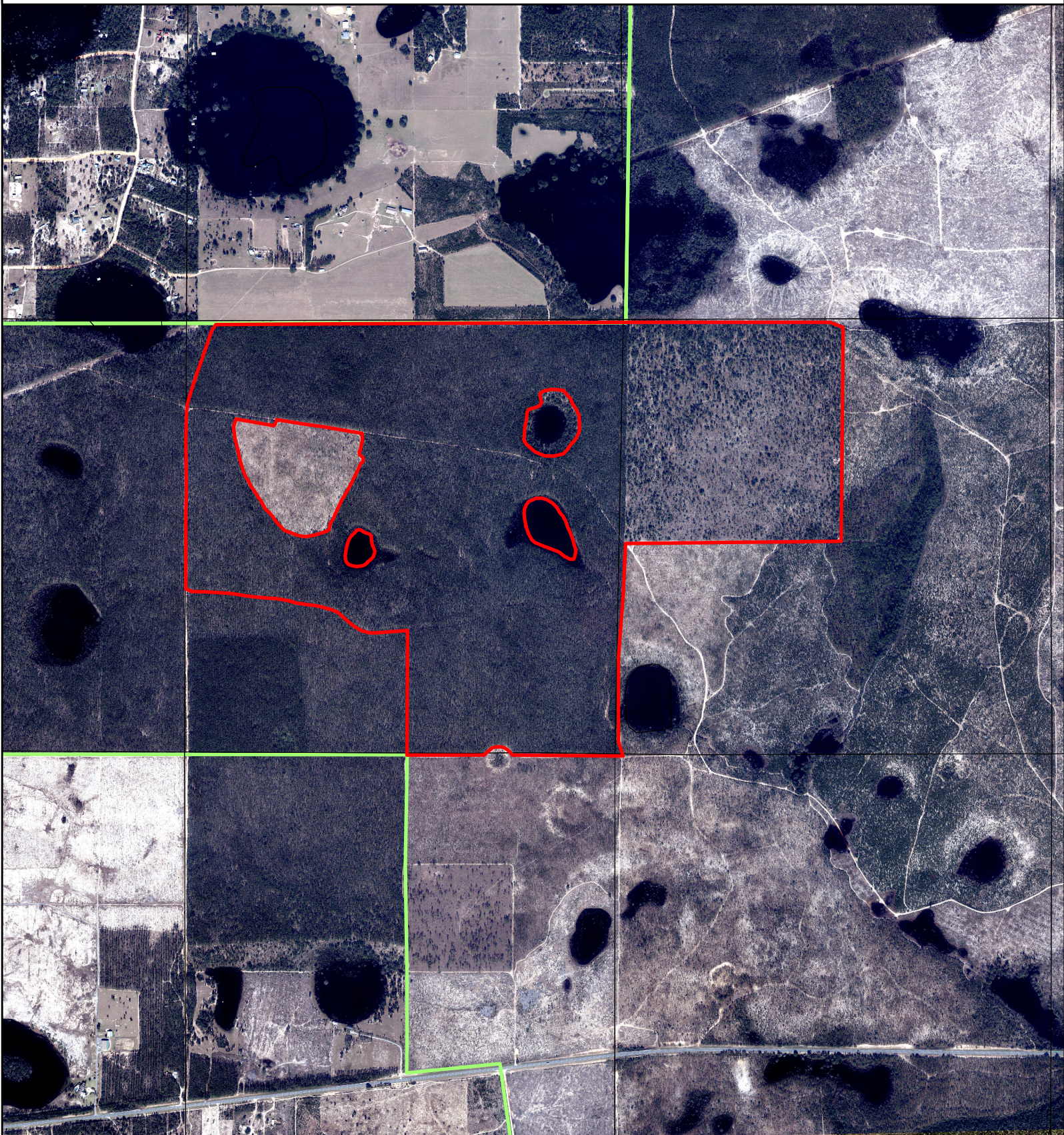




Exhibit Map 3



2025 Econfina Creek Sand Pine Timber Sale - Unit 3 Alligator Pond
Econfina Creek Water Management Area
Sections 35 & 36, T1N, R14W
Washington County, Florida
638 Acres

-  Harvest Area
-  District Lands

0 0.15 0.3 0.6 Miles

