

**SAND HILL LAKES MITIGATION BANK**  
**FDEP PERMIT NO. 0227351-001**  
**SEMIANNUAL STATUS REPORT**  
**PERIOD: JANUARY – JUNE 2025**

---

For the period January – June 2025:

1. Prescribed fire was implemented on approximately 991 acres (Figure 1).
2. Longleaf pine (*Pinus palustris*) was planted in approximately 145 acres of Hydric Pine Flatwood restoration areas in March at a density of 726 trees per acre (Figure 2).
3. Efforts to limit damage to vegetation at Sand Hill Lakes Mitigation Bank (SHLMB) by feral hog are ongoing and appear successful. Under Contract 24-060 with USDA APHIS-WS (Animal and Plant Health Inspection Service – Wildlife Services), no feral hog activity was observed by USDA personnel and no feral hogs were trapped.
4. Perimeter fencing was inspected; vegetation growing on perimeter fencing was controlled through use of herbicides.
5. Mowing of nuisance shrubs adjacent to management access roads was conducted.
6. Public fishing and hunting continued at the SHLMB in accordance with permit conditions. Records are maintained by FWC.
7. Security and law enforcement patrols continued in accordance with permit conditions; no known violations were reported.
8. Water level gages were read monthly in accordance with permit conditions. Data is available upon request.
9. A draft adaptive management plan was submitted to FDEP on April 2<sup>nd</sup> to address short comings identified during the December 2024 annual inspection.

Anticipated restoration and/or management anticipated for July – December 2025:

1. Sandhill (longleaf pine/wiregrass community) restoration polygons where oak/shrub densities exceed desired conditions will be managed with fire, herbicide, and/or mowing.
2. Water level gages will continue to be read monthly in accordance with permit conditions.
3. Security and law enforcement patrols will continue in accordance with permit conditions.
4. Public fishing and hunting, overseen by FWC, will continue in accordance with permit conditions.
5. Inspections of perimeter fencing will continue; repairs will be made as necessary. Application of herbicide to vegetation growing on perimeter fencing will be implemented as necessary.
6. Exotic vegetation, if observed by NFWFMD or FWC staff, will be treated with herbicides.
7. Management of any feral hog or beaver issues will continue under Contract 24-060 with USDA APHIS-WS (Animal and Plant Health Inspection Service – Wildlife Services).

Overall, the site is in excellent ecological condition. Management activities continue in accordance with permit conditions. Issues identified (e.g., minor occurrence of exotic and/or nuisance vegetation; feral hog populations; perimeter fencing maintenance; shrub and *Andropogon* spp. densities in selected polygons) will continue to be addressed.

Certification:

We certify, to the best of our knowledge, that this report represents a true and accurate description of the activities and site conditions at the time of this report. This semi-annual report was written in accordance with Specific Condition 27 of the permit.

*Robert Lide*

Robert F. Lide, Senior Environmental Scientist IV, QMS Team Member  
8 July 2025

*Philip Garrett*

Philip Garrett, Environmental Scientist III, QMS Team Member  
8 July 2025

*Coakley Taylor*

Coakley Taylor, Regional Lands Supervisor, QMS Team Member  
8 July 2025

*Table 1. Representative Photos (JAN – JUN 2025)*



**Planting Crew in Hydric Pine Flatwoods  
(3/12/2025)**



**Black Pond High Quality Wetlands Preservation  
(6/24/2025)**



**Hydric Pine Flatwoods (Burned 1/30/2025;  
Planted w/Longleaf Pine 3/12/2025)**



**Sandhills Restoration Adjacent to Cat Pond  
(Burned 6/18/2025)**



**Upland Preservation and Management (Burned  
5/16/2025)**



**Sand Hills Restoration (Last Burned 5/5/2023;  
Next Burn Scheduled for Later in 2025)**



Figure 1: Prescribed Fire (JAN - JUN, 2025)

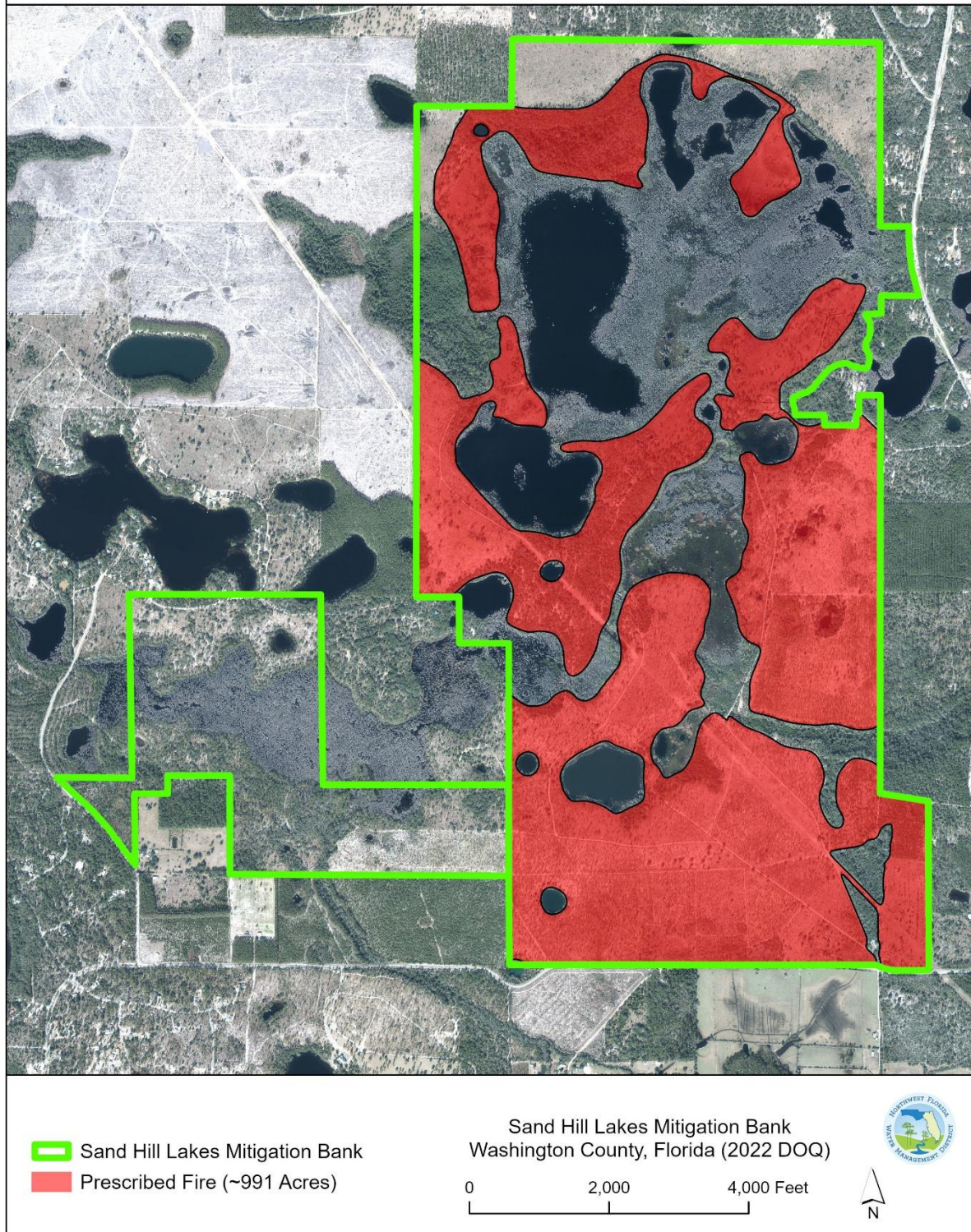


Figure 1. Burn Polygons (Burned January – June 2025)



Figure 2: Longleaf Pine Planted in Hydric Pine Flatwood Areas (MAR 2025)

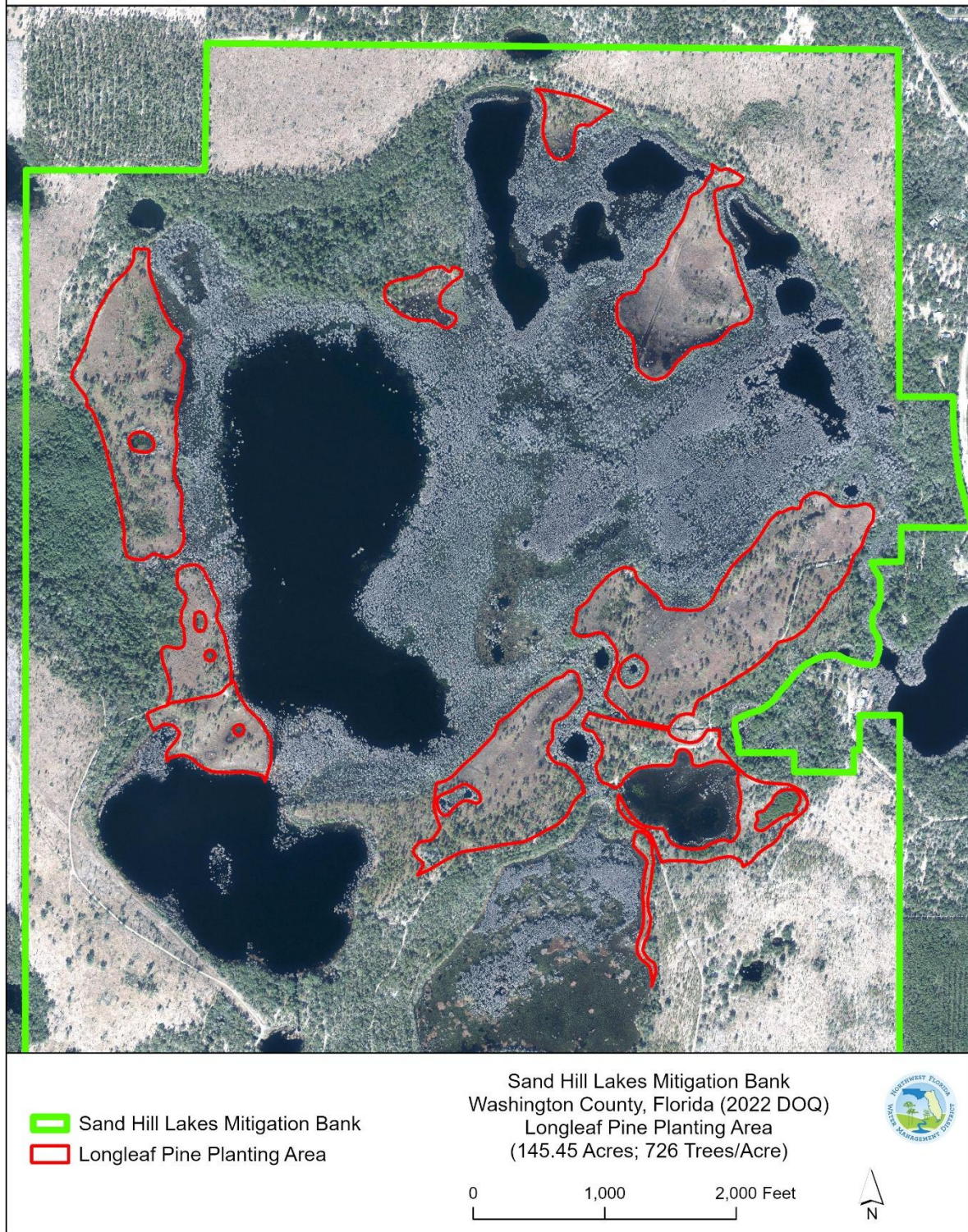


Figure 2. Hydric Pine Flatwood Areas Planted with Longleaf Pine (March 2025)