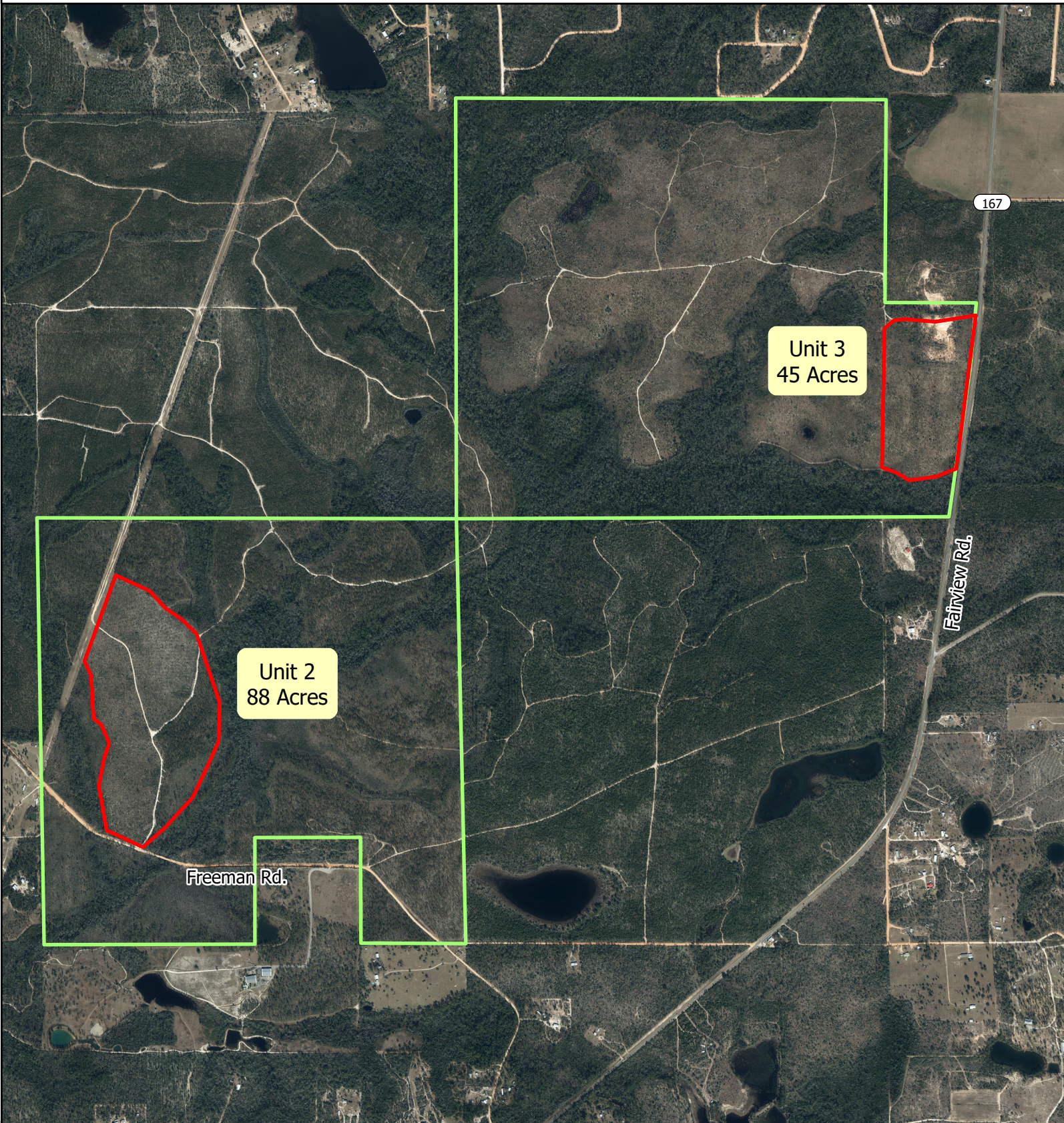




Exhibit Map 2



2026 Sand Pine and Hardwood Eradication Services - Units 2 & 3
Econfina Creek Water Management Area
Sections 9 & 17, Township 2N, Range 11W
Jackson County, Florida
133 Acres

-  Stand Boundaries
-  District Lands

0 0.15 0.3 0.6 Miles

