



Bayou Texar Sub-Basin Work Plan

Northwest Florida Watersheds Partnership Program

The **Northwest Florida Watersheds Partnership Program (Program)** is a collaborative, multi-party initiative to proactively address critical water resource issues within priority sub-basins of the Northwest Florida Water Management District (District). The program is being implemented in coordination with local and county governments, regional entities, and other interested parties to maximize effectiveness.

Bayou Texar

Bayou Texar sub-basin is the priority sub-basin within the Pensacola Bay watershed. The work plan describes the sub-basin, the critical water resource issues, and strategies and proposed projects that can be implemented to address these issues. The Bayou Texar watershed comprises approximately 12,155 acres and consists of two subwatersheds – Carpenter Creek and Bayou Texar. Land elevation ranges from -1 foot below sea level to 162 feet above sea level. Carpenter Creek forms the headwaters starting just north of Interstate 10 near Olive Road and is approximately 6,805 acres. The creek flows approximately 4.5 miles southeast before forming Bayou Texar. The Bayou Texar subwatershed is approximately 5,350 acres and empties into Pensacola Bay just north of the Three Mile Bridge. This subwatershed contains the oldest communities in the Pensacola Bay system and the Carpenter Creek portion, in particular, has suffered from the impacts of urbanization including severe erosion, channel modifications, loss of habitat, and impacts to water quality. Restoration of the creek and bayou, addressing water quality impacts and providing public recreation access points to celebrate some of the historically/

culturally important community treasures such as “Aunt Jenny’s Swimming Hole” are some of the results restoration partners hope to achieve. Currently, 90 percent of the watershed is developed. As of the 2020 census, the sub-basin’s population was 95,563. The population is estimated to grow an additional five percent by 2045.

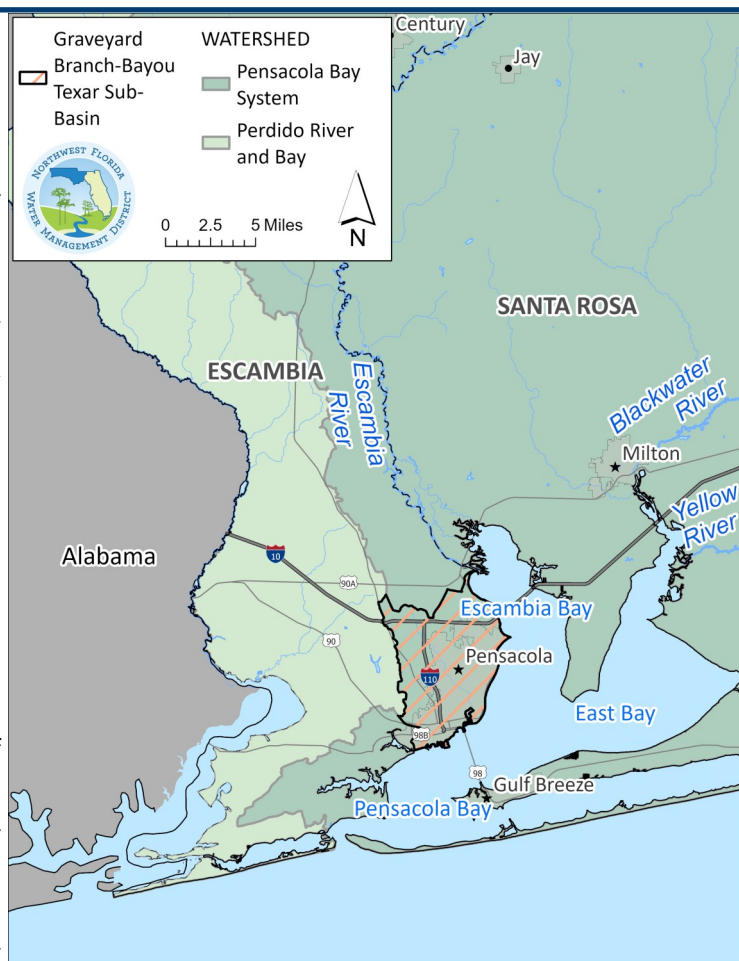
Current Issues and Challenges

The majority of the sub-basin’s urbanization occurred by the late 1970s, following construction of several bridges in the 1950s and 1960s. Sacred Heart Hospital relocated into the basin in 1965, and Cordova Mall opened in 1971. By 1976, the commercial corridor along 9th Avenue was fairly developed. A second commercial corridor established along North Davis Highway anchored by University Mall in 1974. As a result of the development and loss of open space, addressing the significant erosion, sedimentation, and water quality issues will require innovative solutions and partnerships.

Water quality impairments include:

Carpenter Creek: Fecal Coliform

Bayou Texar: Fecal Coliform and Metals



Strategies and Solutions

Successful restoration and protection of the Bayou Texar sub-basin will involve restoring creek channels and floodplains, improving the quality and size of riparian buffers, addressing the sources of water quality impairments, improving the protection and conservation of water supply resources, enhancing coordination among restoration partners, and increasing monitoring activities to track and evaluate progress.



Carpenter Creek Headwater Area

Proposed Projects and Funding Needs

Addressing critical water resource issues will require a multi-year effort. Future projects, in addition to those identified within this work plan, will likely be needed to fully address water resource issues and challenges within the Bayou Texar sub-basin. Many of the identified projects provide multiple water resource benefits. As of January 2026, 23 projects have been proposed, at an estimated total cost of **\$216.5 million**. The current funding need is estimated at **\$187.1 million**. Project types include:

- Potable water transmission system improvements
- Floodplain expansion and restoration
- Stormwater system expansion and treatment improvements
- Living shoreline assistance and education



Southern Portion of Bayou Texar