

**BELLAMY MITIGATION SITE
COMBINED ANNUAL MONITORING REPORT
FOR YEARS FOUR (2012), FIVE (2013) AND SIX (2014)**

**Bellamy Property
Jackson County**

SAJ-2007-6119 (IP-DEB), issued 6/4/2009

Impact: Calhoun County Airport Expansion Offsite Mitigation, SAJ-2007-6119 (IP-DEB)

Mitigation: Bellamy Property

Monitoring Date(s): September 2012, June 2013 and January 2014

SCOPE

The purpose of this project is to provide a partial offset for wetland impacts caused by expansion of the Calhoun County Airport. Per Corps permit, approximately 7.18 acres of palustrine forested wetlands are directly impacted by the Airport expansion, with additional direct and secondary impacts to other waters of the United States. Compensatory mitigation for the Airport expansion is being implemented at three locations (onsite, Atkins Park, and the Bellamy Site). Mitigation at the Bellamy Property consists of preservation and enhancement of 50 acres of forested floodplain along the Chipola River (48 acres palustrine forested wetlands; 2 acres forested upland buffers). The NFWFMD is responsible only for mitigation at the Bellamy Site and bears no responsibility whatsoever for the implementation, success, or monitoring of the onsite mitigation or Atkins Park mitigation projects.

PROPOSED MITIGATION

As part of its mission to protect water resources in the Florida Panhandle, the NFWFMD owns and manages for ecological integrity 7,378 acres of floodplain wetlands and associated upland buffers along the upper Chipola River north of Florida Caverns State Park and 1,377.76 acres west of Altha and situated north/south half way between Interstate 10 and Highway 20. Acquisition (fee-simple) of the 338.70-acre Bellamy property from International Paper Company (IP) will increase the protected acreage to 9,094 acres and is part of a larger goal of bringing some 14,000 acres within the Chipola basin under NFWFMD-ownership and ecological stewardship. Located in a karst area of Jackson County and adjacent to the Chipola River, the Bellamy tract consists of high-quality bottomland forest, tupelo/cypress floodplain sloughs, a 2nd order magnitude spring, small sinkholes on the floodplain, and limited transitional mesic forested upland buffers. It is bounded by the Chipola River and existing NFWFMD lands to the west and the Arborgen Bellamy Seed Orchard to the east. A 50-acre portion of this property will be dedicated as offsetting mitigation for impacts associated with the Calhoun County Airport.

This mitigation area is primarily high-quality bottomland wetland forest (48 acres), a high-quality, 2nd order magnitude spring, several small sinkholes within the floodplain, and limited upland buffers (1 acre of transitional, mesic slope forest and 1-acre of degraded sandhill

community with offsite sand pine, spruce pine and cedar). There are minor occurrences of exotic and/or invasive species in the wetland and upland buffers (e.g., *Lygodium japonicum*, *Ligustrum sinense*, *Sapindus saponaria*, *Lonicera japonica*). Relict cypress stumps suggest logging along the Chipola River in the distant past. The mitigation project entails preservation, enhancement, and implementation of ecological management of bottomland hardwood wetland forest within the Chipola River watershed, a major tributary to the Apalachicola River.

MITIGATION ACTIVITIES

Year 2012- Annual Monitoring Report 4

The site will be preserved in perpetuity in a natural state as part of the NFWMD Chipola River Water Management Area (WMA). The upland section of the Bellamy tract (Polygon D and part of Polygon C-see attached map) were GPS in order to develop a map that can be used for prescribed burning and the planting of longleaf pine tubelings. Exotic/invasive species have been observed along the upland periphery (*Lygodium japonicum*, *Ligustrum sinense*, *Sapindus saponaria*, and *Lonicera japonica*) will be treated with appropriate wetland approved herbicides after acquisition. Management of exotic/invasive plant species and nuisance faunal species (e.g., feral pig and beaver) will be perpetual. Land ownership signage will be clearly posted along the property boundaries. Prescribed fire will be implemented, in adjacent upland buffers on a 3-5 year burn regime.

Year 2013- Annual Monitoring Report 5

Invasive non-native plant species were treated by spraying with a 4-wheeler spray tank and a handheld spray tank. Most of the treated invasive non-native plant species were located at the upland bottomland transition zone covered by Polygon D and Polygon C. The species treated during this application period include Japanese climbing fern (*Lygodium japonicum*), Chinese privet (*Ligustrum sinense*), kudzu vine (*Pueraria montana*), Chinaberry (*Melia azedarach*) and mimosa (*Albizia julibrissin*).

Year 2014- Annual Monitoring Report 6

A 1.5-acre site prep prescribed burn was conducted on the upland Polygon D (one-acre) and part of the upland Polygon C (one-acre). The site prep burn was conducted to prepare these polygons for the planting of longleaf pine. Following the burn, both Upland Polygon D and Upland Polygon C were planted with longleaf pine tubelings to cover the 1.5-acre area at a tree spacing of 6'x10'. Not all of upland Polygon C is suitable for longleaf pine habitat and this area was not planted.

Mitigation commenced with acquisition of the Bellamy Property in March, 2009, and all performance standards are currently met. Management of very minor occurrences of exotic and invasive species found on the upland periphery (<1% exotics and <5% invasives).

After implementation of mitigation, this site will be actively maintained by NFWFMD lands management personnel as part of an extensive conservation land management program within the Chipola River WMA. This site is expected to be largely self-sustaining.

WORK SCHEDULE

- Acquisition: **Completed in March 2009**
- Continuing exotic control: **Ongoing-2013**
- Prescribed fire of upland buffers: **2014**
- Longleaf Restoration in Polygons C and D: **2014**

SUCCESS CRITERIA

The project's success criteria are:

Performance Standard	Condition Met?
≥ 90% cover by appropriate wetlands species (i.e., FAC+ or wetter) suitable for target plant community.	Yes
Invasive species cover ≤ 5% and exotic species cover ≤ 1% (pursuant to the most current list established by the Florida Exotic Pest Plant Council).	Yes
Desired species showing evidence of stable or increasing coverage.	Yes
Increase or stable appropriate species diversity.	Yes
Kind and total coverage of species appropriate for management goals and target natural community.	Yes
Kind and total coverage of herbaceous species appropriate for management goals and target natural community.	Yes
Kind and total coverage of tree species appropriate for management goals and target natural community.	Yes
Maintain the ecological conditions so that the mitigation UMAM scores are met for each of the specified community types.	Yes

During the most recent site inspection (2014), all performance standards were found to be met.

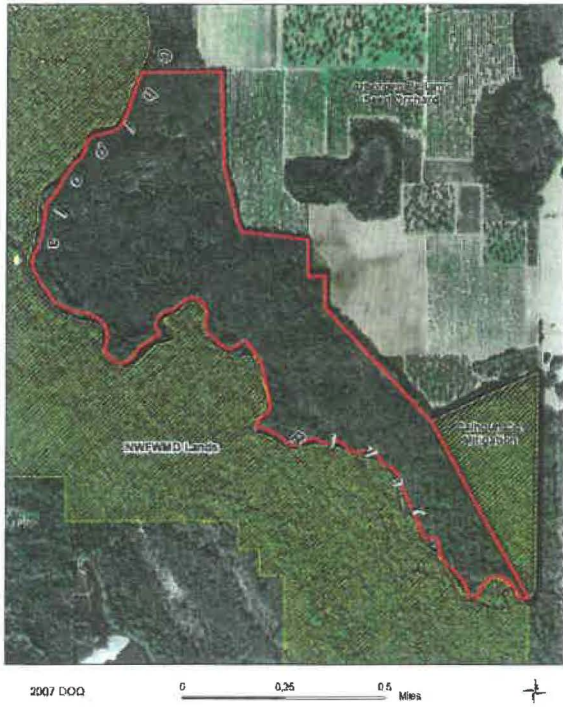
Conclusions:

The site consists of high-quality bottomland wetland forest (48 acres) with limited upland buffers on the periphery (1 acre of transitional, mesic slope forest and 1 acre of degraded sandhill community with offsite sand pine, spruce pine and cedar). A high-quality, 2nd order magnitude spring and several small sinkholes within the floodplain also occur. Despite minor occurrences of exotic and invasive species along the periphery (e.g., *Lygodium japonicum*, *Ligustrum sinense*, *Sapindus saponaria*, *Lonicera japonica*), the percent cover of these species is below the 1% exotic and 5% invasive species cover threshold.

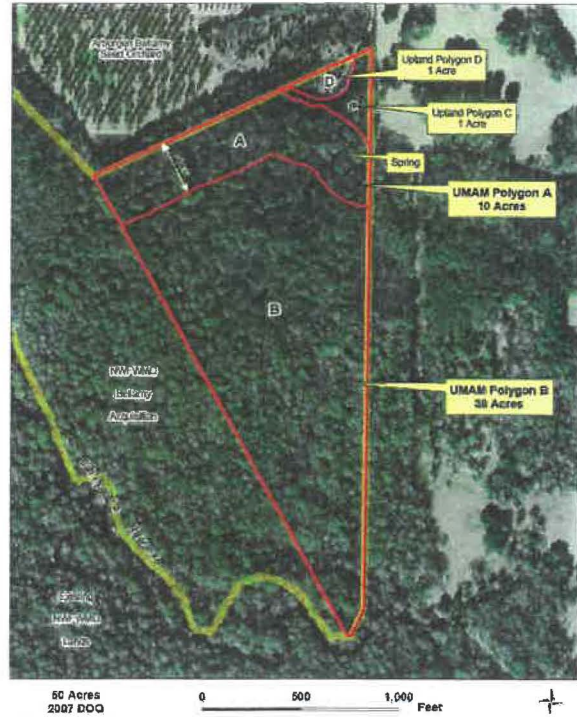
Location of Bellamy Property



Bellamy Property (288.7 +/- Acres)



UMAM Polygons





Bellamy 2nd Order Magnitude Spring, Polygon A



Bellamy Bottomland, Polygon A



Bellamy Bottomland, Polygon B



Bellamy Upland Forest, Polygon C



Bellamy Upland buffer, Polygon D

Plant Species Observed

Scientific Name	Common Name	Polygon A	Polygon B	Polygon C	Polygon D
<i>Acer floridanum</i>	Florida maple	X	X		
<i>Acer rubrum</i>	Red maple	X	X		X
<i>Acer saccharinum</i>	Silver maple	X	X		
<i>Aesculus pavia</i>	Red buckeye				
<i>Agalinis sp.</i>	False fox glove			X	X
<i>Arisaema dracontium</i>	Green dragon				
<i>Arisema triphyllum</i>	Jack-in-the- pulpit				
<i>Arundinaria gigantea</i>	Giant cane	X	X	X	
<i>Asplenium platyneuron</i>	Ebony spleenwort		X		
<i>Bignonia capreolata</i>	Cross vine				
<i>Callicarpa americana</i>	Beauty berry	X	X	X	
<i>Campsis radicans</i>	Trumpet vine				
<i>Carex gigantea</i>	Sedge		X		
<i>Carpinus caroliniana</i>	Ironwood	X	X	X	
<i>Carya aquatica</i>	Water hickory		X		
<i>Carya cordiformis</i>	Bitternut hickory	X		X	
<i>Celtis laevigata</i>	Sugarberry	X		X	
<i>Cephalanthus occidentalis</i>	Button bush				
<i>Cercis canadensis</i>	Red bud	X		X	
<i>Chaerophyllum procumbens</i>	Spreading chervil				
<i>Chrysogonum virginianum</i>	Green N gold				
<i>Cornus florida</i>	Flowering dogwood			X	
<i>Cornus foemina</i>	Swamp dogwood				
<i>Crataegus aestivalis</i>	May haw				
<i>Crataegus marshallii</i>	Parsley haw				
<i>Crinum sp.</i>	Swamp lily	X			
<i>Dichanthelium sp.</i>	Witch grass	X	X		X
<i>Diospyros virginiana</i>	Persimon	X	X	X	
<i>Fagus grandifolia</i>	American beech	X			
<i>Galium tinctorium</i>	Stiff marsh bedstraw		X		
<i>Gelsemium rankinii</i>	Swamp jessamine		X		
<i>Gelsemium sempervirens</i>	Florida jessamine	X			X
<i>Halesia diptera</i>	Two-winged silver bells				
<i>Hydrocotyle verticillata</i>	Swamp pennywort				
<i>Hymenocallis sp.</i>	Spider-lily		X		
<i>Hypericum sp.</i>	St. Johns wort	X	X	X	X
<i>Ilex opaca</i>	American holly			X	
<i>Ilex vomitoria</i>	Yaupon holly			X	X
<i>Iris sp.</i>	Iris		X		
<i>Juncus gymnocarpus*</i>	Coville's rush		X		
<i>Juniperus virginiana</i>	Red cedar	X		X	X
<i>Ligustrum sinense***</i>	Chinese privet		X		X
<i>Liquidambar styraciflua</i>	Sweet gum	X	X	X	X
<i>Lonicera japonica***</i>	Japanese honey suckle				
<i>Ludwigia sp.</i>	Rattlebox				
<i>Lygodium japonicum***</i>	Japanese climbing fern	X			
<i>Magnolia grandiflora</i>	Southern magnolia	X			
<i>Menispermum canadense</i>	Moonseed	X	X		
<i>Nyssa sylvatica</i>	Black gum				
<i>Onoclea sensibilis</i>	Sensitive fern				
<i>Pinus clausa</i>	Sand pine	X			
<i>Pinus glabra</i>	Spruce pine	X	X		
<i>Pinus taeda</i>	Loblolly pine	X			X

Scientific Name	Common Name	Polygon A	Polygon B	Polygon C	Polygon D
<i>Pityopsis sp.</i>	Shiners				X
<i>Platanus occidentalis</i>	Sycamore				
<i>Polygala sp.</i>	Smart weed				
<i>Prunus angustifolia</i>	Chicka saw plum				
<i>Prunus caroliniana</i>	Cherry laurel	X	X		
<i>Prunus serotina</i>	Black cherry	X	X		
<i>Quercus hemisphaerica</i>	Diamond oak	X	X		
<i>Quercus laurifolia</i>	Laurel oak	X	X	X	
<i>Quercus lyrata</i>	Overcup oak	X	X	X	X
<i>Quercus michauxii</i>	Basket oak				
<i>Quercus nigra</i>	Water oak	X	X		
<i>Quercus virginiana</i>	Live oak	X	X	X	X
<i>Rhapidophyllum hystrix</i>	Needle palm				
<i>Rhus copallinum</i>	Winged sumac			X	X
<i>Rubus cuneifolius</i>	Sand blackberry			X	X
<i>Rubus trivialis</i>	Dewberry	X	X	X	
<i>Sabal minor</i>	Bluestem palm	X	X		
<i>Samolus ebracteatus</i>	Water pimpernel				
<i>Sapindus saponaria</i> ***	Soap berry				
<i>Sebastiania fruticosa</i>	Sebastian bush				
<i>Smilax bonn-nox</i>	Green briar	X	X	X	X
<i>Smilax ecirrhata</i>	Upright carrion flower	X	X	X	X
<i>Smilax laurifolia</i>	Cat briar				
<i>Symplocos tinctoria</i>	Horse sugar	X	X		
<i>Taxodium distichum</i>	Bald cypress		X		
<i>Toxicodendron radicans</i>	Poison ivy	X	X		
<i>Trichostema setaceum</i>	Narrow-leaved blue curls	X	X		
<i>Trillium decipiens</i>	Chattahoochee river wakerobin		X	X	
<i>Ulmus alata</i>	Winged elm				
<i>Ulmus americana</i>	American elm	X	X		
<i>Ulmus rubra</i>	Slippery elm				
<i>Vaccinium corymbosum</i>	High bush blueberry	X	X		
<i>Viburnum dentatum</i>	Arrow wood				
<i>Viburnum obovatum</i>	Walter's viburnum				
<i>Viola affinis</i>	Florida violet				
<i>Viola walteri</i>	Walter's violet				
<i>Vitis rotundifolia</i>	Wild muscadine	X	X		
<i>Yeatesia viridiflora</i>	Green-flowered yeatesia				

* State Endangered , **State Threatened, *** Nuisance exotic

Wildlife observed:

Red-tailed hawk
huge Owl