

Cotton Landing - Choctawhatchee River WMA



www.nfwwater.com

Cotton Landing along Holmes Creek is a popular campsite that offers three campsites that can accommodate tents, vans, and truck mounted campers only. This campsite can hold up to 8 people and two vehicles per campsite. This location offers a picnic pavilion at each site, picnic tables, pedestal grills, fire rings, and a portable toilet. This location also offers a day use area from sunrise to sunset that offers a picnic pavilion, portable toilet, parking area and two boat ramps that are adjacent to the campsite. Cypress Spring is a short 10-minute paddle trip from Cotton Landing. For a free reservation please visit our [reservation site](#).

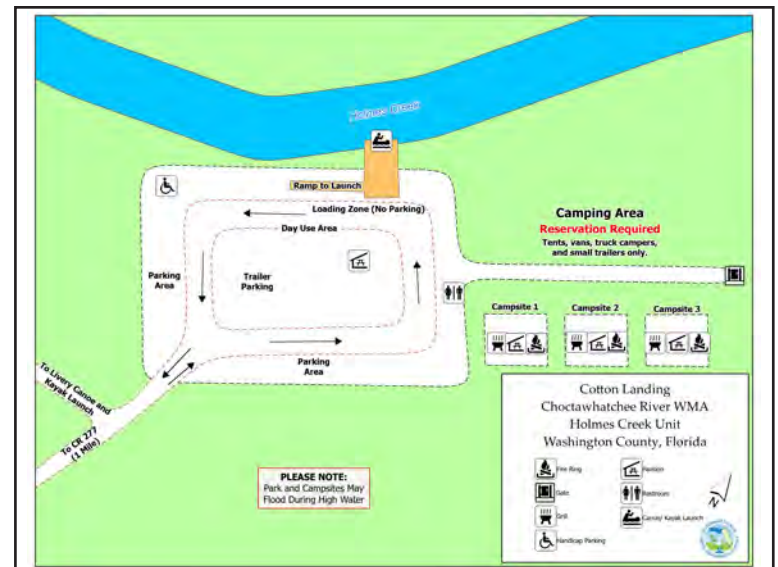
Address: 3008 Highway 277
Vernon, FL 32462

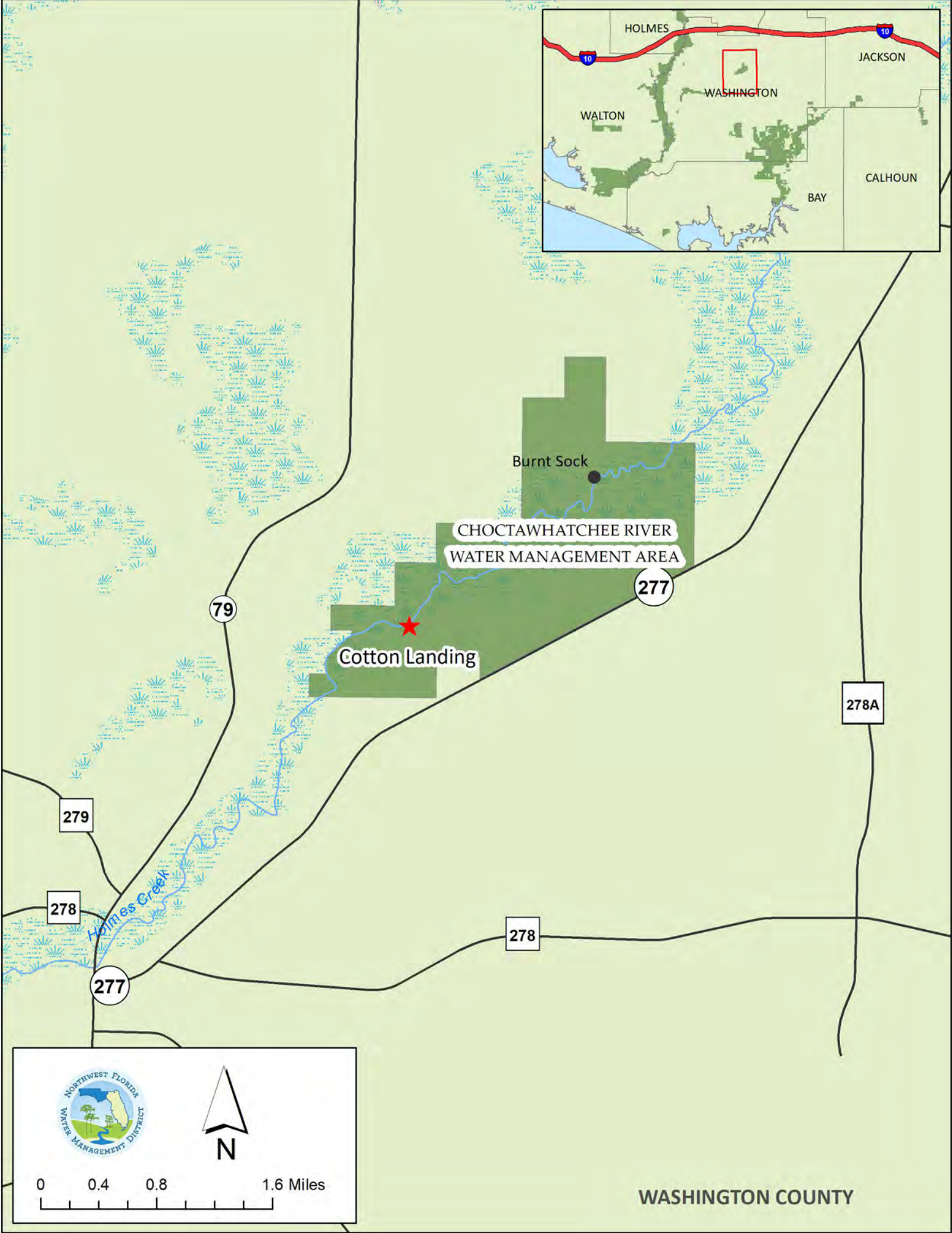


www.nfwwater.com



Above: Cotton Landing Boat Ramp
Top right: Cotton Landing Campsite
Center: Cotton Landing Day Use Area Picnic Pavilion
Bottom right: Cotton Landing Campsite Diagram





NORTHWEST FLORIDA
WATER MANAGEMENT DISTRICT

N

0 0.4 0.8 1.6 Miles

WASHINGTON COUNTY